

THE
WOODLEIGH
RESIDENCES

2-Bedroom -

- A1a - 53 sqm | 570 sqft
- A1b - 55 sqm | 592 sqft
- B1 - 60 sqm | 646 sqft
- B2a - 62 sqm | 667 sqft
- B2b - 62 sqm | 667 sqft

- B2c - 64 sqm | 689 sqft
- B3 - 65 sqm | 700 sqft
- B4 - 65 sqm | 700 sqft
- C1 - 67 sqm | 721 sqft
- C2 - 69 sqm | 743 sqft

3-Bedroom -

- D1 - 79 sqm | 850 sqft
- D2 - 89 sqm | 958 sqft
- D3 - 89 sqm | 958 sqft
- E1 - 100 sqm | 1,076 sqft
- E2 - 104 sqm | 1,119 sqft

Unit Floor	01	02	03	04
13	D1	G	F1	D1
12	D1	G	F1	D1
11	D1	G	F1	D1
10	D1	G	F1	D1
09	D1	G	F1	D1
08	D1	G	F1	D1
07	D1	G	F1	D1
06	D1	G	F1	D1
05	D1	G	F1	D1
04	D1	G-V	F1-V	D1
03	D1-P	G-P	F1-P	D1-P

Block 13

Unit Floor	05	06	07	08
13	D2	D3	D2	D2
12	D2	D3	D2	D2
11	D2	D3	D2	D2
10	D2	D3	D2	D2
09	D2	D3	D2	D2
08	D2	D3	D2	D2
07	D2	D3	D2	D2
06	D2	D3	D2	D2
05	D2	D3	D2	D2
04	D2	D3-V	D2	D2
03	D2-P	D3-P	D2-P	D2-P

Block 15

Unit Floor	09	10	11	12
13	D1	D2	D2	D2*
12	D1	D2	D2	D2*
11	D1	D2	D2	D2*
10	D1	D2	D2	D2*
09	D1	D2	D2	D2*
08	D1	D2	D2	D2*
07	D1	D2	D2	D2*
06	D1	D2	D2	D2*
05	D1	D2	D2	D2*
04	Common facilities		D2	D2*
03	Common facilities		D2-P	D2*-P

Block 17

Unit Floor	13	14	15	16	17	18	19	20
13	A1b	B2a	B2c	B3	B3	B2c*	B2a*	A1b
12	A1b	B2a	B2c	B3	B3	B2c*	B2a*	A1b
11	A1b	B2a	B2c	B3	B3	B2c*	B2a*	A1b
10	A1b	B2a	B2c	B3	B3	B2c*	B2a*	A1b
09	A1b	B2a	B2c	B3	B3	B2c*	B2a*	A1b
08	A1b	B2a	B2c	B3	B3	B2c*	B2a*	A1b
07	A1b	B2a	B2c	B3	B3	B2c*	B2a*	A1b
06	A1b	B2a	B2c	B3	B3	B2c*	B2a*	A1b
05	A1b	B2a	B2c	B3	B3	B2c*	B2a*	A1b
04	A1b	B2a	B2c	B3	B3	B2c*	B2a*	A1b
03	A1b-P	B2a-P	B2c-P	B3-P	B3-P	B2c*-P	B2a*-P	A1b-P

Block 19

4-Bedroom -

- F1 - 118 sqm | 1,270 sqft
- F2 - 119 sqm | 1,281 sqft
- G - 137 sqm | 1,475 sqft

Unit Floor	21	22	23	24	25	26	27	28	29
13	A1a	A1a	B4	E2	C2	C2	E2	B2b	A1a
12	A1a	A1a	B4	E2	C2	C2	E2	B2b	A1a
11	A1a	A1a	B4	E2	C2	C2	E2	B2b	A1a
10	A1a	A1a	B4	E2	C2	C2	E2	B2b	A1a
09	A1a	A1a	B4	E2	C2	C2	E2	B2b	A1a
08	A1a	A1a	B4	E2	C2	C2	E2	B2b	A1a
07	A1a	A1a	B4	E2	C2	C2	E2	B2b	A1a
06	A1a	A1a	B4	E2	C2	C2	E2	B2b	A1a
05	A1a	A1a	B4	E2	C2	C2	E2	B2b	A1a
04	A1a	A1a	B4	E2	C2-V	C2-V	E2	B2b	A1a
03	A1a-P	A1a-P	B4-P	E2-P	C2-P	C2-P	E2-P	B2b-P	A1a-P

Block 21

Unit Floor	30	31	32	33	34	35	36	37
13	A1a	B2b	E2	C2	B1	F2	B2b	A1a
12	A1a	B2b	E2	C2	B1	F2	B2b	A1a
11	A1a	B2b	E2	C2	B1	F2	B2b	A1a
10	A1a	B2b	E2	C2	B1	F2	B2b	A1a
09	A1a	B2b	E2	C2	B1	F2	B2b	A1a
08	A1a	B2b	E2	C2	B1	F2	B2b	A1a
07	A1a	B2b	E2	C2	B1	F2	B2b	A1a
06	A1a	B2b	E2	C2	B1	F2	B2b	A1a
05	A1a	B2b	E2	C2	B1	F2	B2b	A1a
04	A1a	B2b	E2	C2-V	B1	F2-V	B2b	A1a
03	A1a-P	B2b-P	E2-P	C2-P	B1-P	F2-P	B2b-P	A1a-P

Block 23

Unit Floor	38	39	40	41	42	43	44	45
13	A1b	B2a*	B2c*	B3	B3	B2c	B2a	A1b
12	A1b	B2a*	B2c*	B3	B3	B2c	B2a	A1b
11	A1b	B2a*	B2c*	B3	B3	B2c	B2a	A1b
10	A1b	B2a*	B2c*	B3	B3	B2c	B2a	A1b
09	A1b	B2a*	B2c*	B3	B3	B2c	B2a	A1b
08	A1b	B2a*	B2c*	B3	B3	B2c	B2a	A1b
07	A1b	B2a*	B2c*	B3	B3	B2c	B2a	A1b
06	A1b	B2a*	B2c*	B3	B3	B2c	B2a	A1b
05	A1b	B2a*	B2c*	B3	B3	B2c	B2a	A1b
04	A1b	B2a*	B2c*	B3	B3	B2c	B2a	A1b
03	A1b-P	B2a*-P	B2c*-P	B3-P	B3-P	B2c-P	B2a-P	A1b-P

Block 25

2-Bedroom -

C1 - 67 sqm | 721 sqft

3-Bedroom -

D1 - 79 sqm | 850 sqft

D2 - 89 sqm | 958 sqft

D3 - 89 sqm | 958 sqft

E1 - 100 sqm | 1,076 sqft

4-Bedroom -

F1 - 118 sqm | 1,270 sqft

G - 137 sqm | 1,475 sqft

Unit	46	47	48	49
13	C1	D2	D2	C1
12	C1	D2	D2	C1
11	C1	D2	D2	C1
10	C1	D2	D2	C1
09	C1	D2	D2	C1
08	C1	D2	D2	C1
07	C1	D2	D2	C1
06	C1	D2	D2	C1
05	C1	D2	D2	C1
04	C1-V	D2	D2	C1-V
03	C1-P	D2-P	D2-P	C1-P

Block 27

Unit	50	51	52	53
13	E1	E1	E1	E1
12	E1	E1	E1	E1
11	E1	E1	E1	E1
10	E1	E1	E1	E1
09	E1	E1	E1	E1
08	E1	E1	E1	E1
07	E1	E1	E1	E1
06	E1	E1	E1	E1
05	E1	E1	E1	E1
04	E1	E1	E1	E1
03	E1-P	E1-P	E1-P	E1-P

Block 29

Unit	54	55	56	57
13	D2	D3	D2	D2
12	D2	D3	D2	D2
11	D2	D3	D2	D2
10	D2	D3	D2	D2
09	D2	D3	D2	D2
08	D2	D3	D2	D2
07	D2	D3	D2	D2
06	D2	D3	D2	D2
05	D2	D3	D2	D2
04	D2	D3-V	D2	D2
03	D2-P	D3-P	D2-P	D2-P

Block 31

Unit	58	59	60	61
13	D1	G	F1	D1
12	D1	G	F1	D1
11	D1	G	F1	D1
10	D1	G	F1	D1
09	D1	G	F1	D1
08	D1	G	F1	D1
07	D1	G	F1	D1
06	D1	G	F1	D1
05	D1	G	F1	D1
04	D1	G-V	F1-V	D1
03	D1-P	G-P	F1-P	D1-P

Block 33

2-BEDROOM

TYPE A1a
53 sqm | 570 sqft

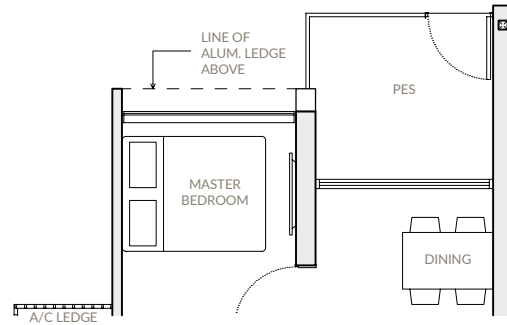
TYPE A1a-P

Block 21

- #03-21
- #03-22 (Mirrored)
- #03-29 (Mirrored)

Block 23

- #03-30
- #03-37 (Mirrored)



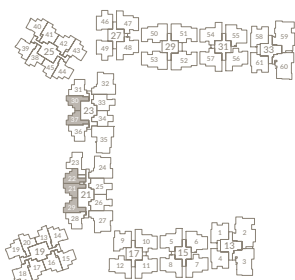
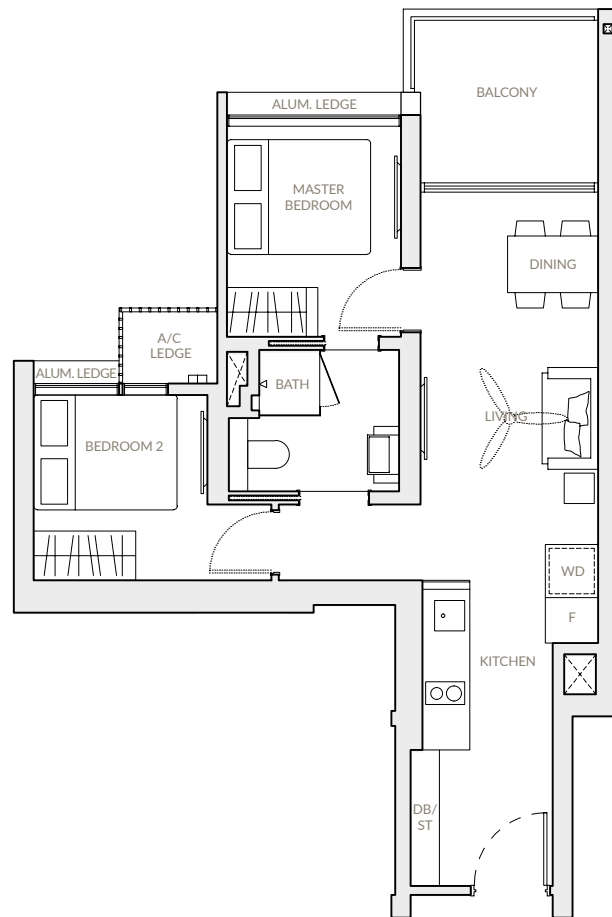
Type A1a

Block 21

- #04-21 to #13-21
- #04-22 to #13-22 (Mirrored)
- #04-29 to #13-29 (Mirrored)

Block 23

- #04-30 to #13-30
- #04-37 to #13-37 (Mirrored)



Notes: Area includes A/C ledge, balconies, PES and void where applicable. Areas are estimates only and are subject to final survey. Plans are not to scale and subject to changes as may be required by the relevant authorities. The balconies and PES shall not be enclosed unless with approved screen. For an illustration of the approved balcony screen, please refer to the diagram annexed hereto as "Annexure".

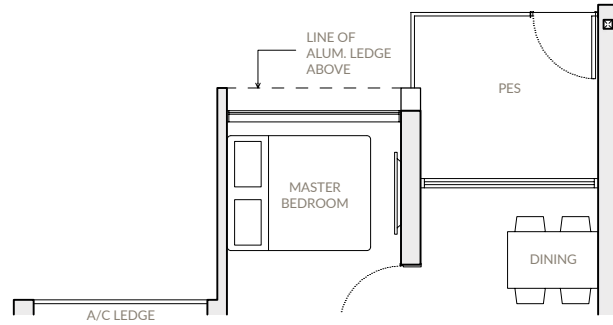
2-BEDROOM

TYPE A1b
55 sqm | 592 sqft

TYPE A1b-P

Block 19
#03-13
#03-20 (Mirrored)

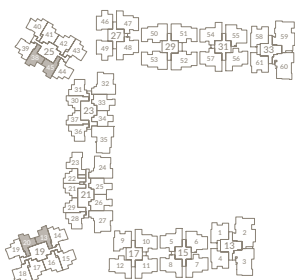
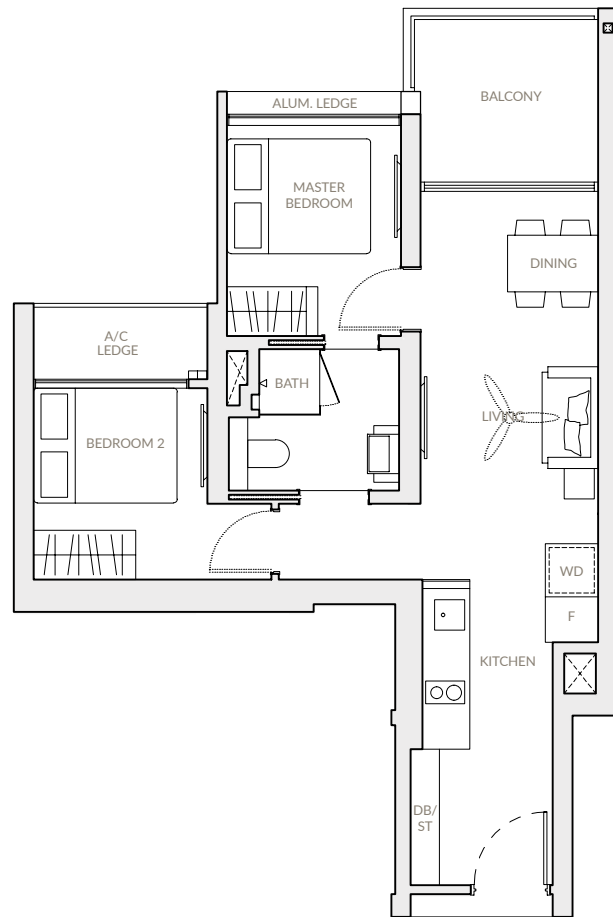
Block 25
#03-38
#03-45 (Mirrored)



TYPE A1b

Block 19
#04-13 to #13-13
#04-20 to #13-20 (Mirrored)

Block 25
#04-38 to #13-38
#04-45 to #13-45 (Mirrored)



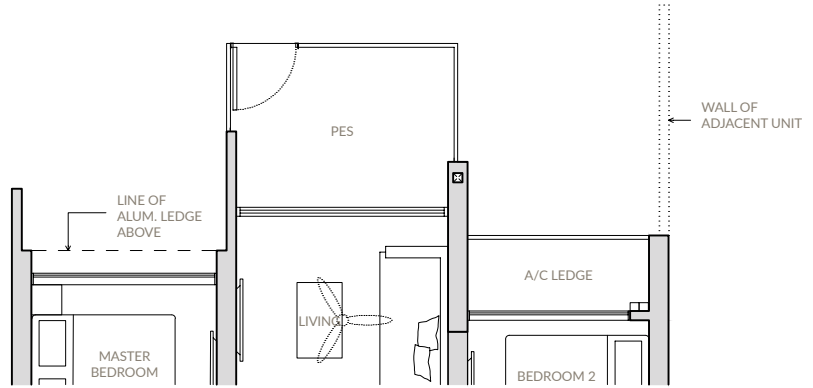
Notes: Area includes A/C ledge, balconies, PES and void where applicable. Areas are estimates only and are subject to final survey. Plans are not to scale and subject to changes as may be required by the relevant authorities. The balconies and PES shall not be enclosed unless with approved screen. For an illustration of the approved balcony screen, please refer to the diagram annexed hereto as "Annexure".

2-BEDROOM DELUXE

TYPE B1
60 sqm | 646 sqft

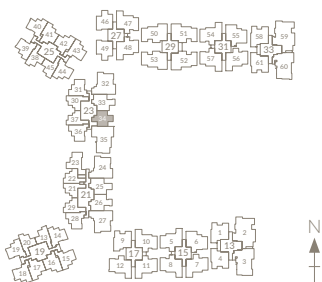
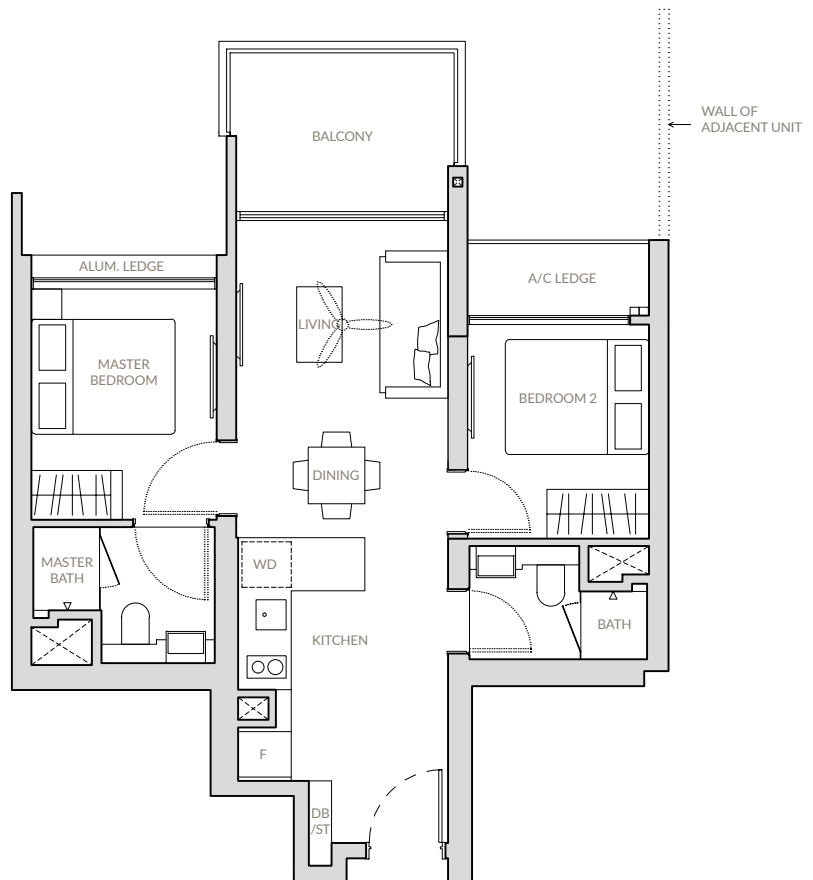
TYPE B1-P

Block 23
#03-34



TYPE B1

Block 23
#04-34 to #13-34



Notes: Area includes A/C ledge, balconies, PES and void where applicable. Areas are estimates only and are subject to final survey. Plans are not to scale and subject to changes as may be required by the relevant authorities. The balconies and PES shall not be enclosed unless with approved screen. For an illustration of the approved balcony screen, please refer to the diagram annexed hereto as "Annexure".

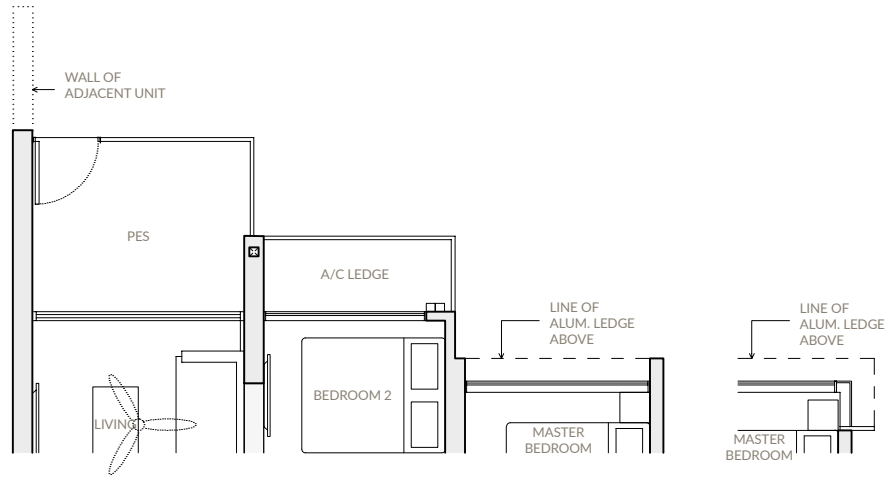
2-BEDROOM DELUXE

TYPE B2a
62 sqm | 667 sqft

TYPE B2a-P

Block 19
#03-14

Block 25
#03-44 (Mirrored)



TYPE B2a*-P

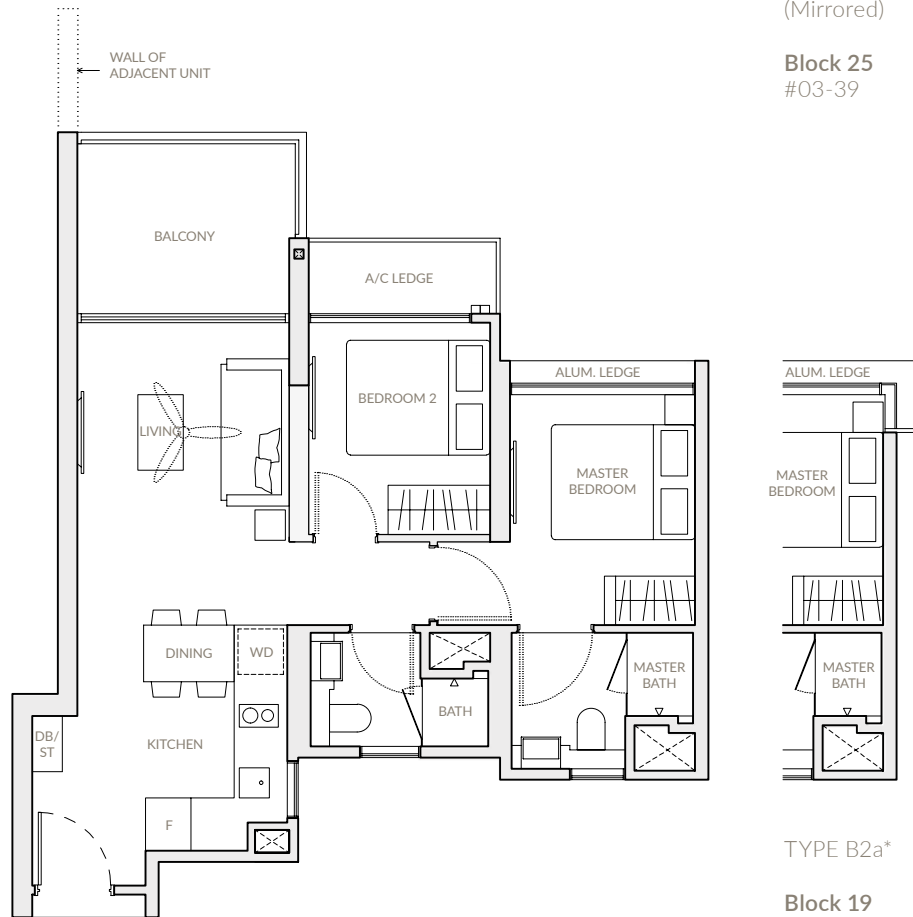
Block 19
#03-19
(Mirrored)

Block 25
#03-39

TYPE B2a

Block 19
#04-14 to #13-14

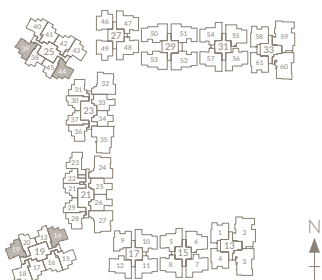
Block 25
#04-44 to #13-44 (Mirrored)



TYPE B2a*

Block 19
#04-19 to #13-19
(Mirrored)

Block 25
#04-39 to #13-39



Notes: Area includes A/C ledge, balconies, PES and void where applicable. Areas are estimates only and are subject to final survey. Plans are not to scale and subject to changes as may be required by the relevant authorities. The balconies and PES shall not be enclosed unless with approved screen. For an illustration of the approved balcony screen, please refer to the diagram annexed hereto as "Annexure".

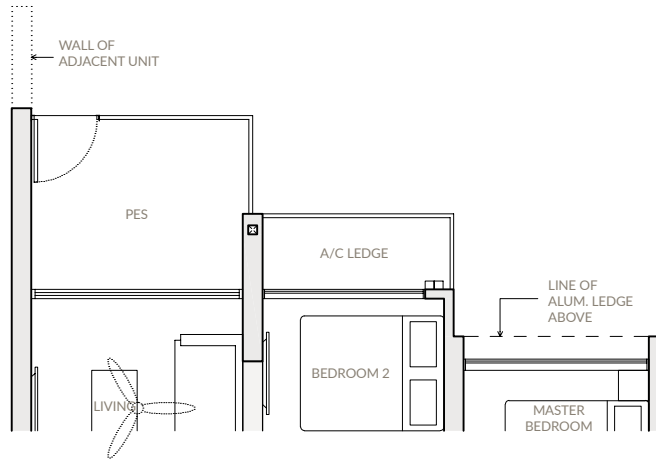
2-BEDROOM DELUXE

TYPE B2b
62 sqm | 667 sqft

TYPE B2b-P

Block 21
#03-28 (Mirrored)

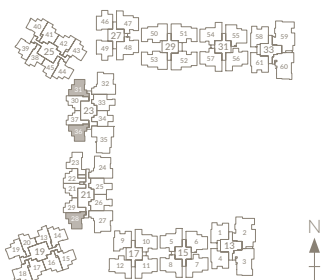
Block 23
#03-31
#03-36 (Mirrored)



TYPE B2b

Block 21
#04-28 to #13-28 (Mirrored)

Block 23
#04-31 to #13-31
#04-36 to #13-36 (Mirrored)



Notes: Area includes A/C ledge, balconies, PES and void where applicable. Areas are estimates only and are subject to final survey. Plans are not to scale and subject to changes as may be required by the relevant authorities. The balconies and PES shall not be enclosed unless with approved screen. For an illustration of the approved balcony screen, please refer to the diagram annexed hereto as "Annexure".

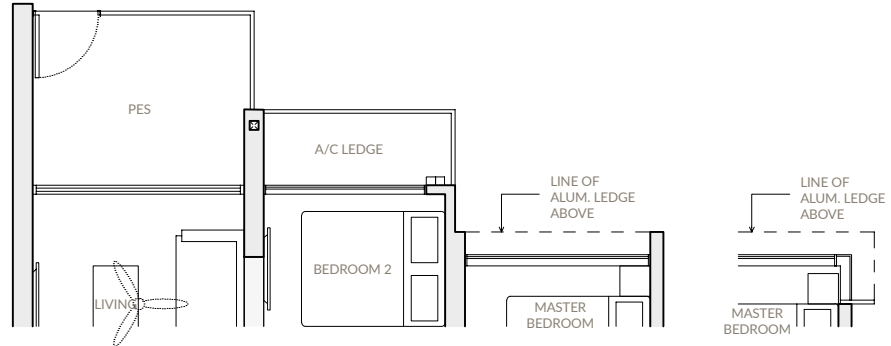
2-BEDROOM DELUXE

TYPE B2c
64 sqm | 689 sqft

TYPE B2c-P

Block 19
#03-15 (Mirrored)

Block 25
#03-43



TYPE B2c*-P

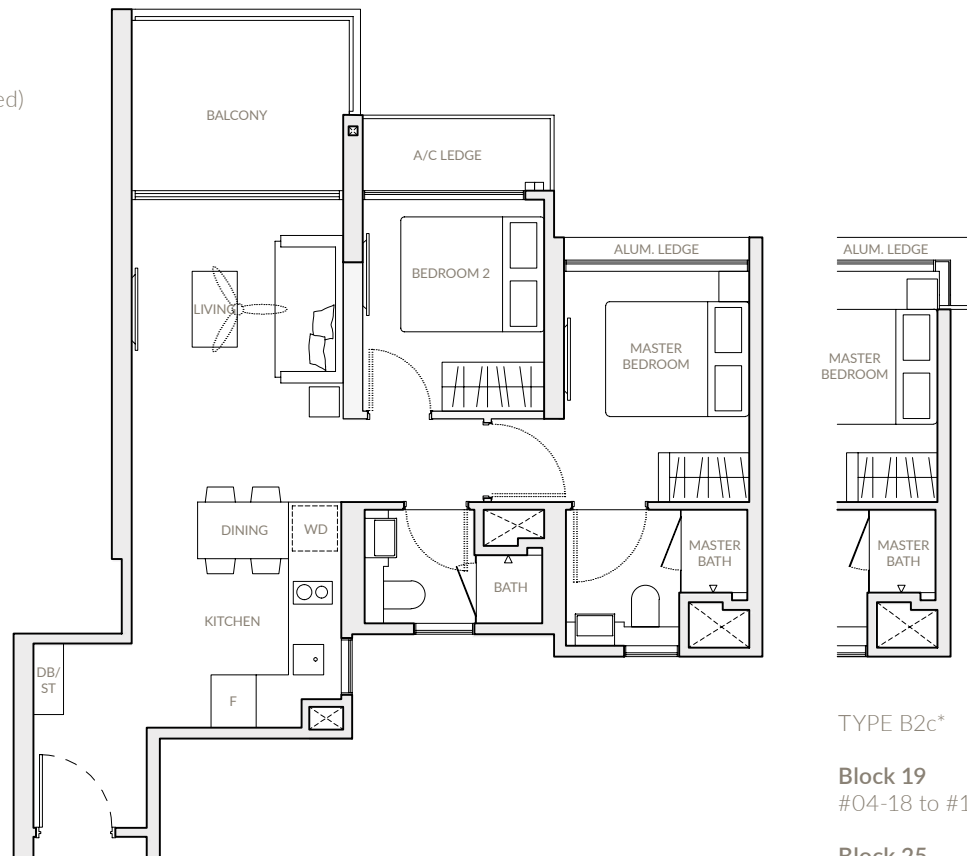
Block 19
#03-18

Block 25
#03-40 (Mirrored)

TYPE B2c

Block 19
#04-15 to #13-15 (Mirrored)

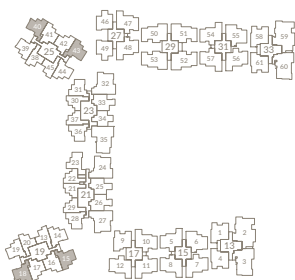
Block 25
#04-43 to #13-43



TYPE B2c*

Block 19
#04-18 to #13-18

Block 25
#04-40 to #13-40
(Mirrored)



Notes: Area includes A/C ledge, balconies, PES and void where applicable. Areas are estimates only and are subject to final survey. Plans are not to scale and subject to changes as may be required by the relevant authorities. The balconies and PES shall not be enclosed unless with approved screen. For an illustration of the approved balcony screen, please refer to the diagram annexed hereto as "Annexure".

2-BEDROOM DELUXE

TYPE B3

65 sqm | 700 sqft

TYPE B3-P

Block 19

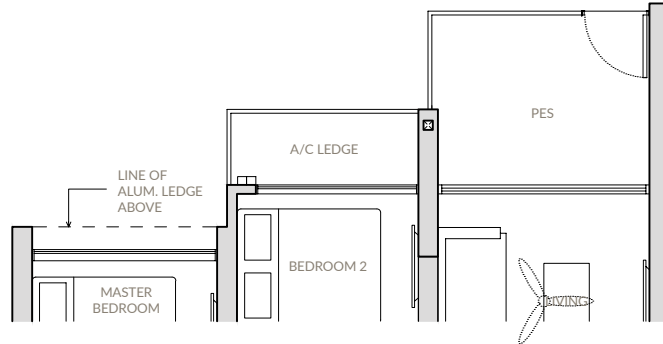
#03-16 (Mirrored)

#03-17

Block 25

#03-41 (Mirrored)

#03-42



TYPE B3

Block 19

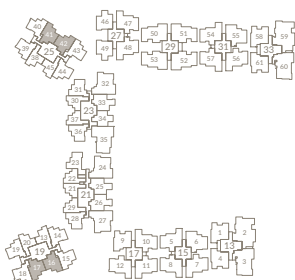
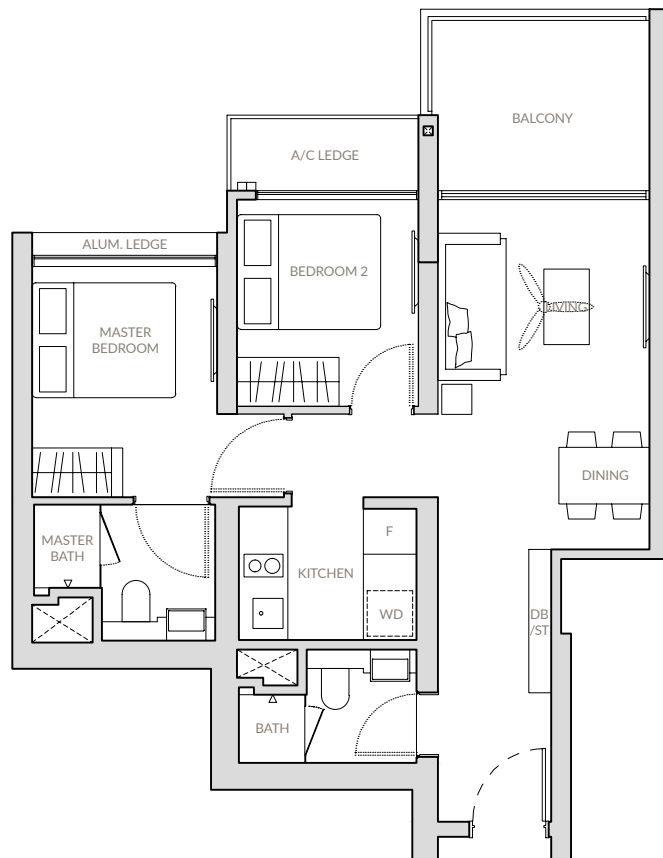
#04-16 to #13-16 (Mirrored)

#04-17 to #13-17

Block 25

#04-41 to #13-41 (Mirrored)

#04-42 to #13-42



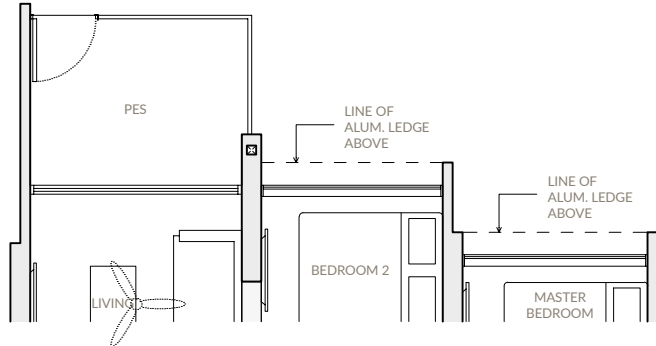
Notes: Area includes A/C ledge, balconies, PES and void where applicable. Areas are estimates only and are subject to final survey. Plans are not to scale and subject to changes as may be required by the relevant authorities. The balconies and PES shall not be enclosed unless with approved screen. For an illustration of the approved balcony screen, please refer to the diagram annexed hereto as "Annexure".

2-BEDROOM DELUXE

TYPE B4
65 sqm | 700 sqft

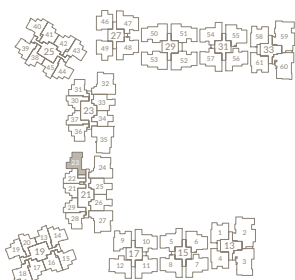
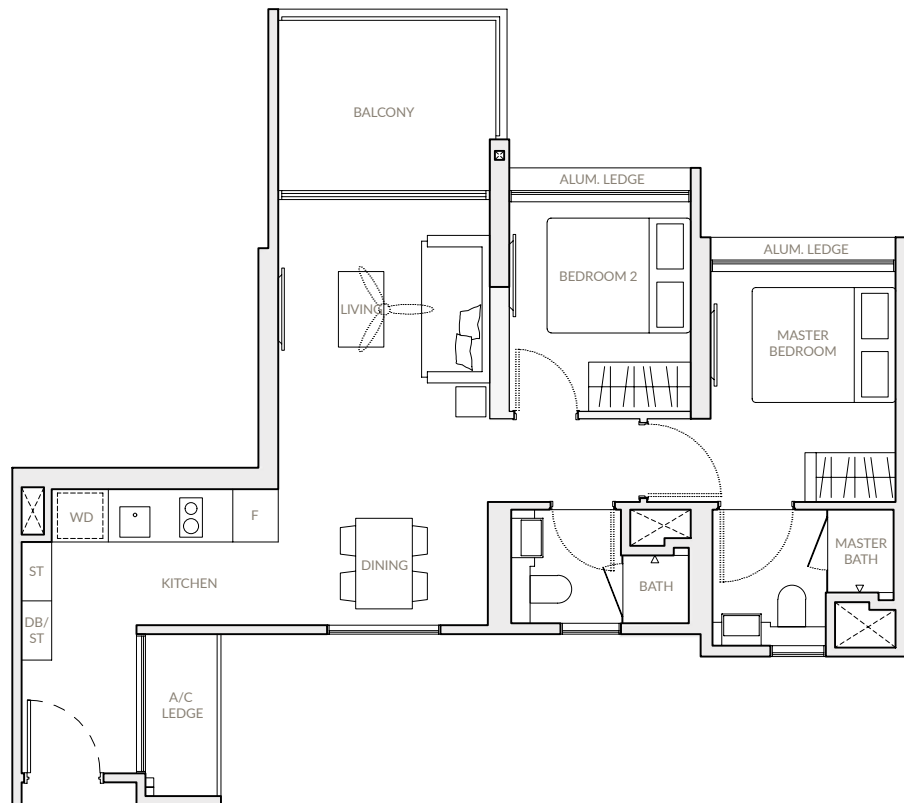
TYPE B4-P

Block 21
#03-23



TYPE B4

Block 21
#04-23 to #13-23



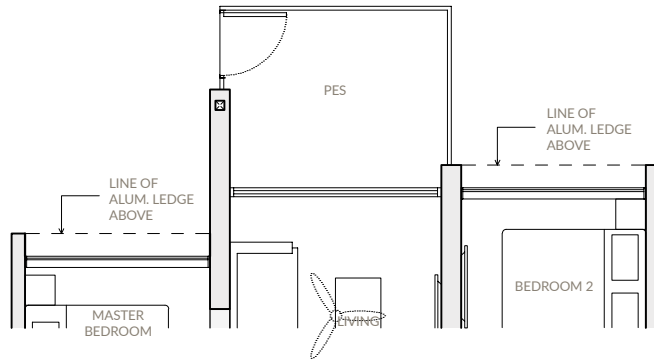
Notes: Area includes A/C ledge, balconies, PES and void where applicable. Areas are estimates only and are subject to final survey. Plans are not to scale and subject to changes as may be required by the relevant authorities. The balconies and PES shall not be enclosed unless with approved screen. For an illustration of the approved balcony screen, please refer to the diagram annexed hereto as "Annexure".

2-BEDROOM FLEXI

TYPE C1
67 sqm | 721 sqft

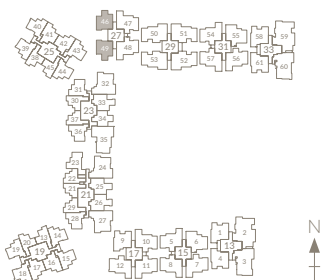
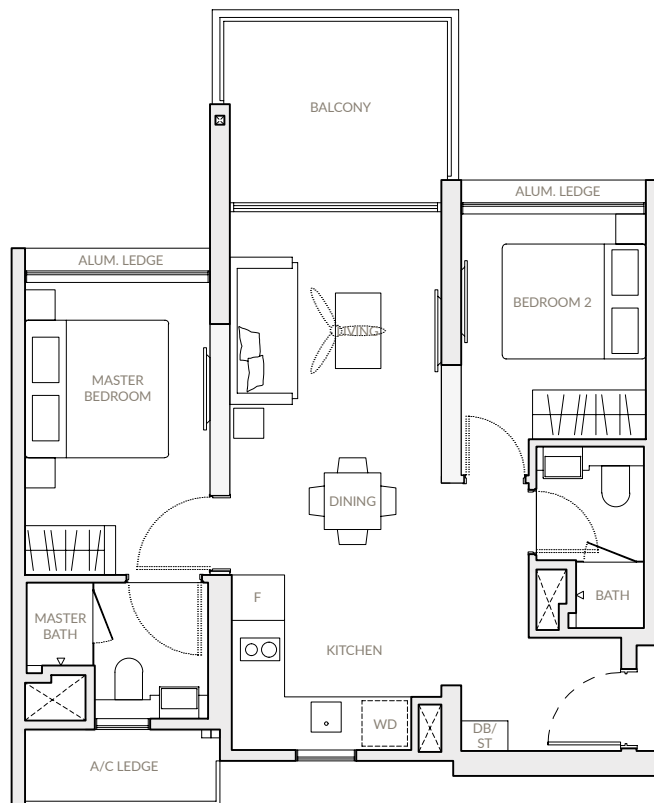
TYPE C1-P

Block 27
#03-46
#03-49 (Mirrored)



TYPE C1

Block 27
#05-46 to #13-46
#05-49 to #13-49 (Mirrored)



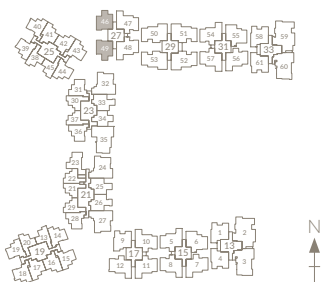
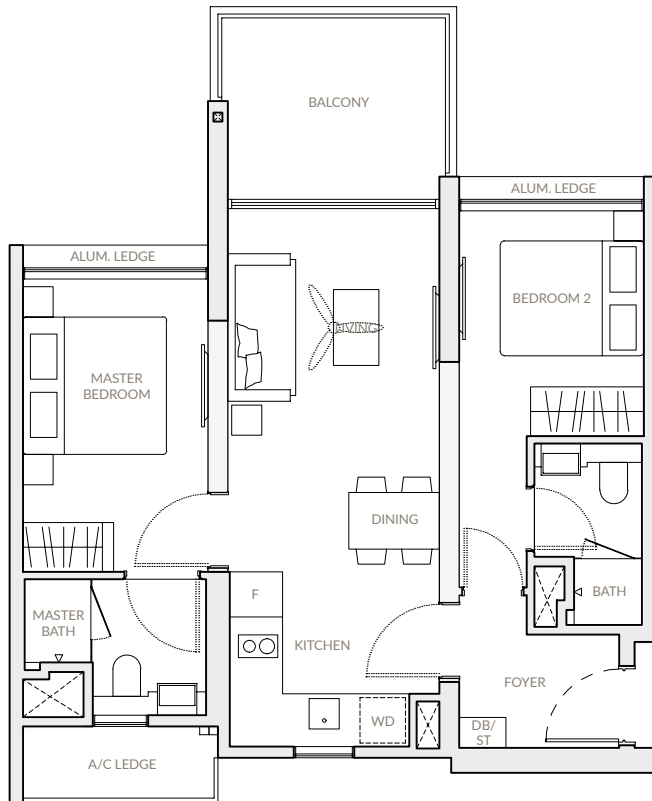
Notes: Area includes A/C ledge, balconies, PES and void where applicable. Areas are estimates only and are subject to final survey. Plans are not to scale and subject to changes as may be required by the relevant authorities. The balconies and PES shall not be enclosed unless with approved screen. For an illustration of the approved balcony screen, please refer to the diagram annexed hereto as "Annexure".

2-BEDROOM FLEXI (Variant Layout)

TYPE C1-V
67 sqm | 721 sqft

TYPE C1-V

Block 27
#04-46
#04-49 (Mirrored)



Notes: Area includes A/C ledge, balconies, PES and void where applicable. Areas are estimates only and are subject to final survey. Plans are not to scale and subject to changes as may be required by the relevant authorities. The balconies and PES shall not be enclosed unless with approved screen. For an illustration of the approved balcony screen, please refer to the diagram annexed hereto as "Annexure".

2-BEDROOM FLEXI

TYPE C2

69 sqm | 743 sqft

TYPE C2-P

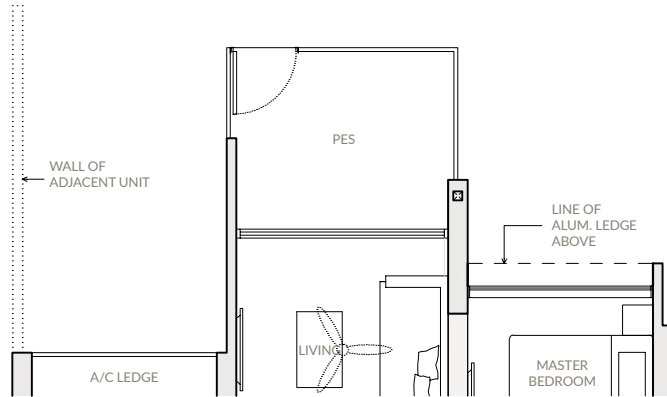
Block 21

#03-25

#03-26 (Mirrored)

Block 23

#03-33



TYPE C2

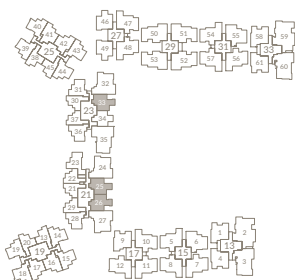
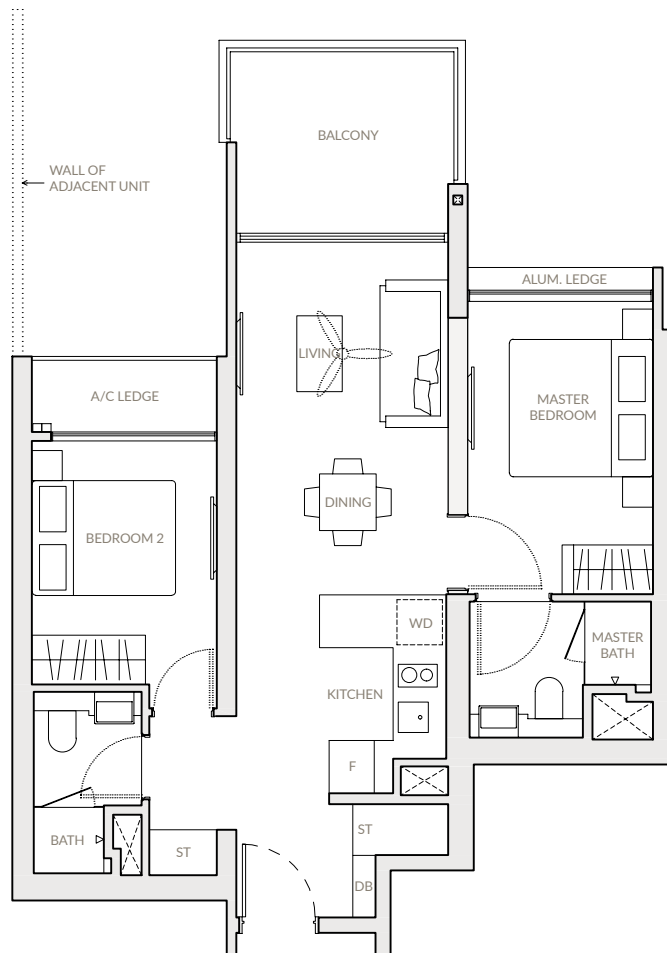
Block 21

#05-25 to #13-25

#05-26 to #13-26 (Mirrored)

Block 23

#05-33 to #13-33



Notes: Area includes A/C ledge, balconies, PES and void where applicable. Areas are estimates only and are subject to final survey. Plans are not to scale and subject to changes as may be required by the relevant authorities. The balconies and PES shall not be enclosed unless with approved screen. For an illustration of the approved balcony screen, please refer to the diagram annexed hereto as "Annexure".

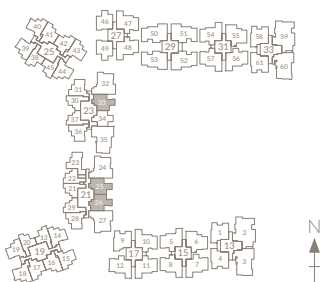
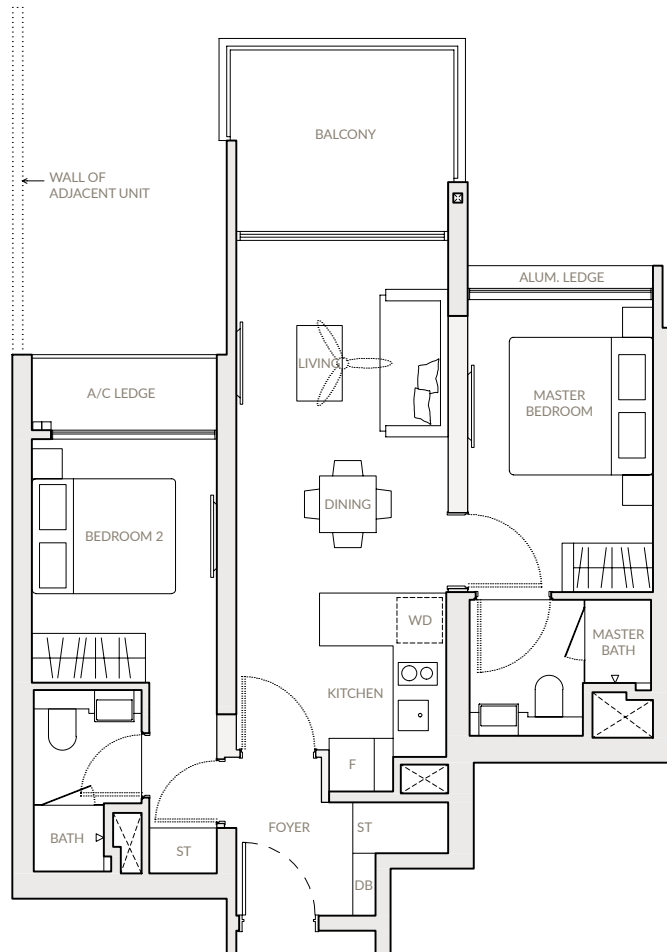
**2-BEDROOM FLEXI
(Variant Layout)**

TYPE C2-V
69 sqm | 743 sqft

TYPE C2-V

Block 21
#04-25
#04-26 (Mirrored)

Block 23
#04-33



Notes: Area includes A/C ledge, balconies, PES and void where applicable. Areas are estimates only and are subject to final survey. Plans are not to scale and subject to changes as may be required by the relevant authorities. The balconies and PES shall not be enclosed unless with approved screen. For an illustration of the approved balcony screen, please refer to the diagram annexed hereto as "Annexure".

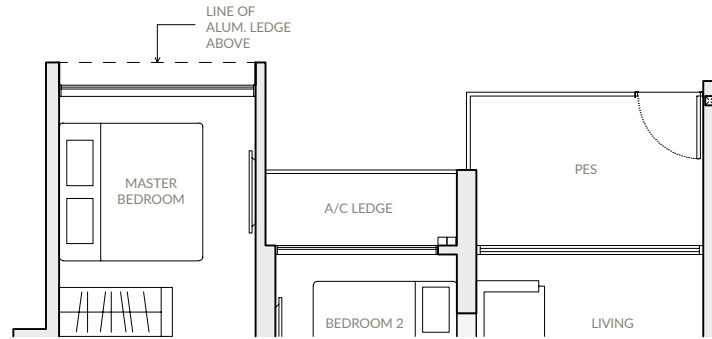
3-BEDROOM

TYPE D1
79 sqm | 850 sqft

TYPE D1-P

Block 13
#03-01
#03-04 (Mirrored)

Block 33
#03-58
#03-61 (Mirrored)

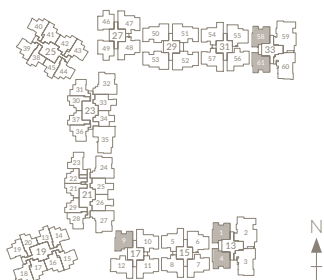
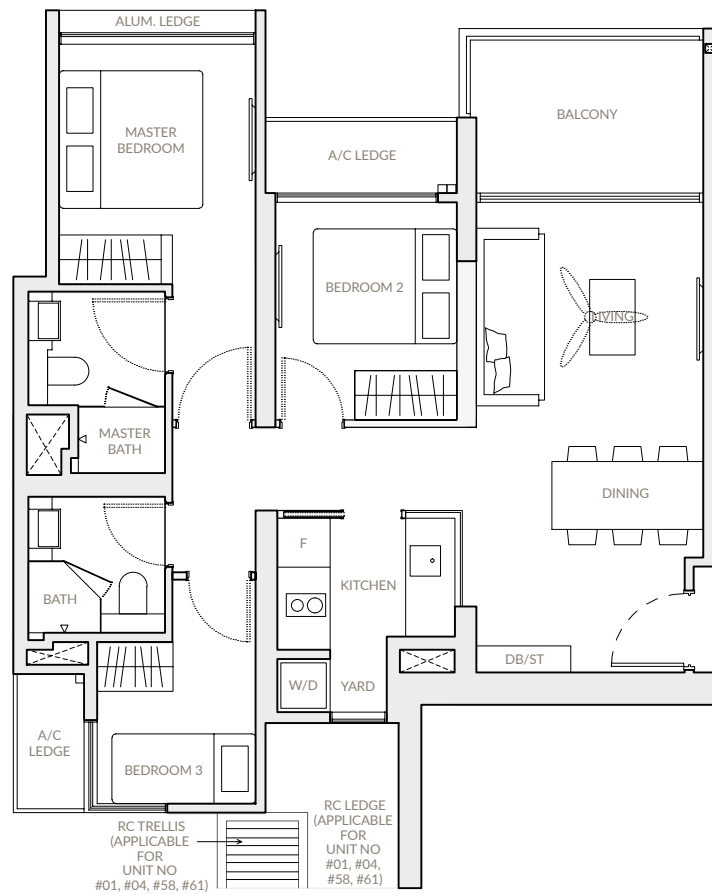


TYPE D1

Block 13
#04-01 to #13-01
#04-04 to #13-04 (Mirrored)

Block 27
#05-09 to #13-09

Block 33
#04-58 to #13-58
#04-61 to #13-61 (Mirrored)



Notes: Area includes A/C ledge, balconies, PES and void where applicable. Areas are estimates only and are subject to final survey. Plans are not to scale and subject to changes as may be required by the relevant authorities. The balconies and PES shall not be enclosed unless with approved screen. For an illustration of the approved balcony screen, please refer to the diagram annexed hereto as "Annexure".

3-BEDROOM

TYPE D2
89 sqm | 958 sqft

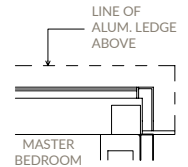
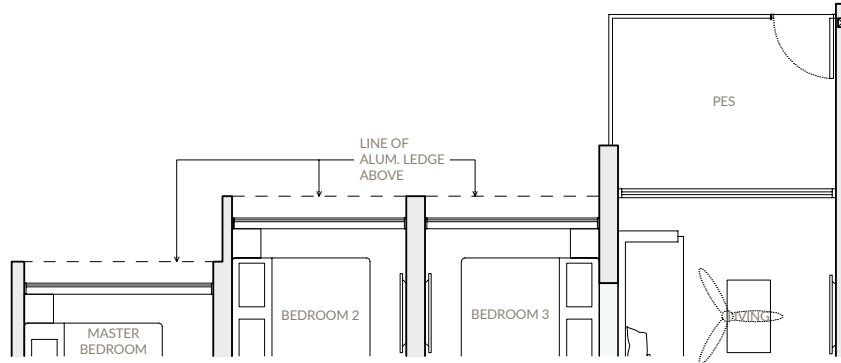
TYPE D2-P

- Block 15**
#03-05
#03-07
#03-08 (Mirrored)

- Block 17**
#03-11

- Block 27**
#03-47 (Mirrored)
#03-48

- Block 31**
#03-54
#03-56
#03-57 (Mirrored)



TYPE D2*-P

- Block 17**
#03-12
(Mirrored)

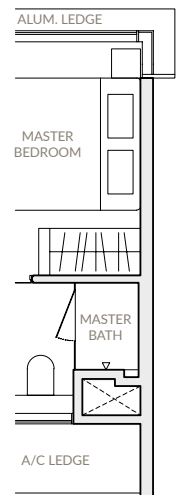
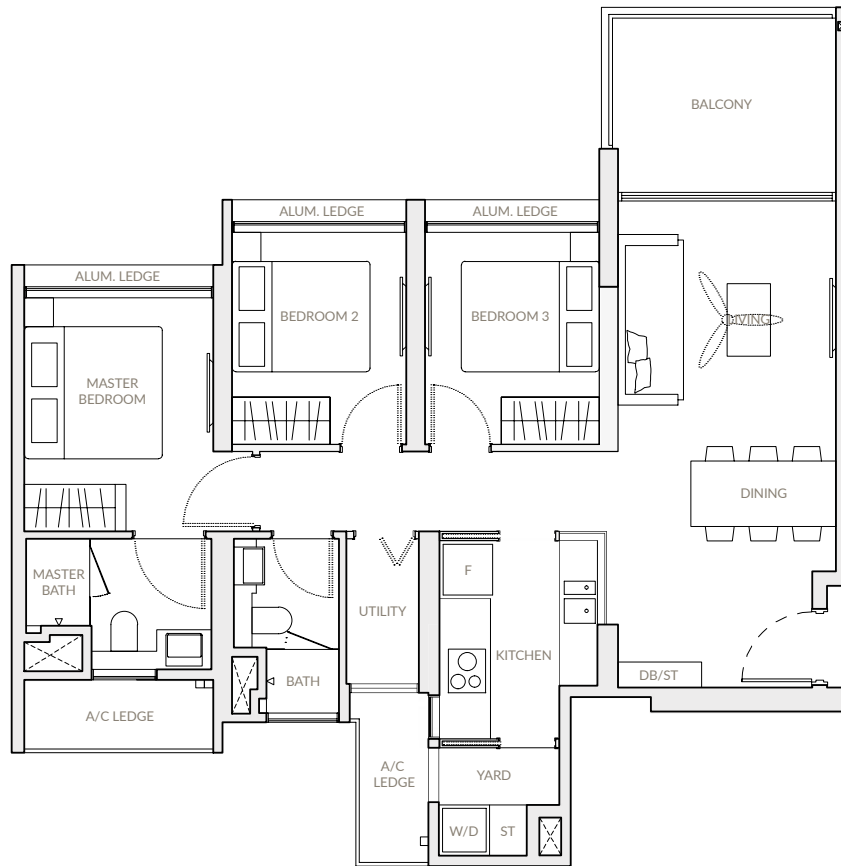
TYPE D2

- Block 15**
#04-05 to #13-05
#04-07 to #13-07
#04-08 to #13-08
(Mirrored)

- Block 17**
#05-10 to #13-10
(Mirrored)
#04-11 to #13-11

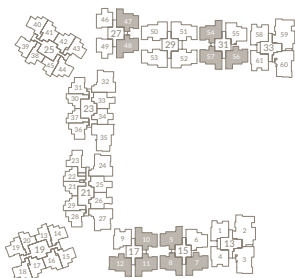
- Block 27**
#04-47 to #13-47
(Mirrored)
#04-48 to #13-48

- Block 31**
#04-54 to #13-54
#04-56 to #13-56
#04-57 to #13-57
(Mirrored)



TYPE D2*

- Block 17**
#04-12 to #13-12
(Mirrored)



Notes: Area includes A/C ledge, balconies, PES and void where applicable. Areas are estimates only and are subject to final survey. Plans are not to scale and subject to changes as may be required by the relevant authorities. The balconies and PES shall not be enclosed unless with approved screen. For an illustration of the approved balcony screen, please refer to the diagram annexed hereto as "Annexure".

3-BEDROOM

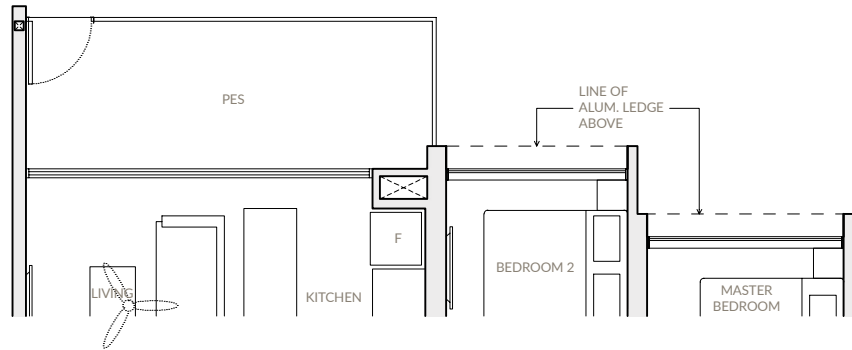
TYPE D3

89 sqm | 958 sqft

TYPE D3-P

Block 15
#03-06

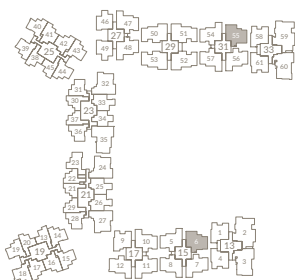
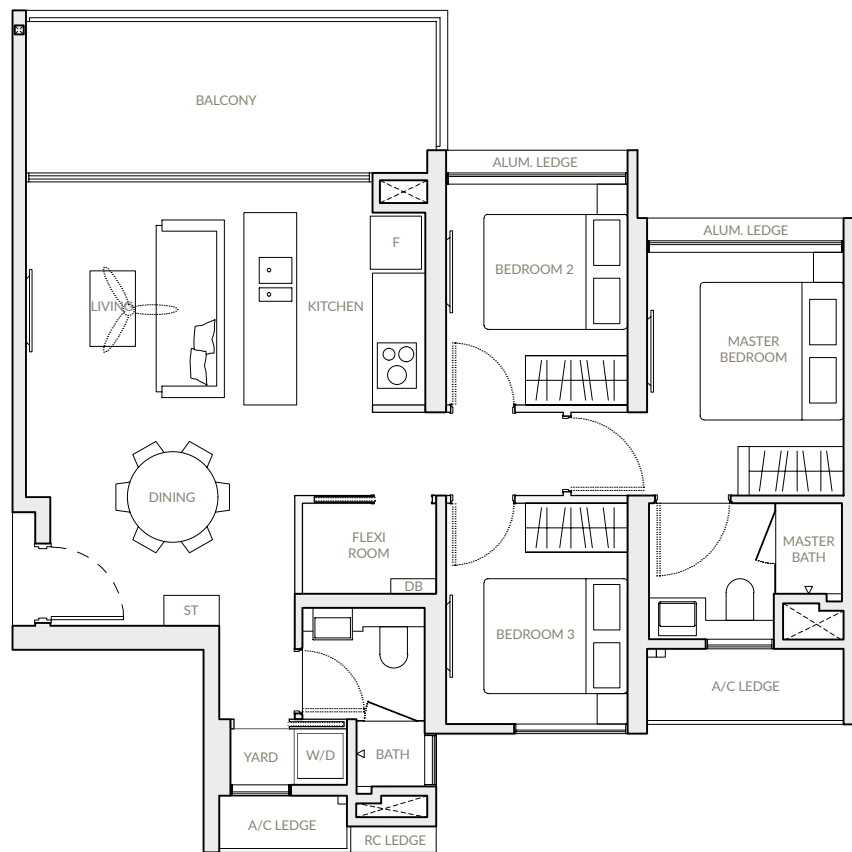
Block 31
#03-55



TYPE D3

Block 15
#05-06 to #13-06

Block 31
#05-55 to #13-55



Notes: Area includes A/C ledge, balconies, PES and void where applicable. Areas are estimates only and are subject to final survey. Plans are not to scale and subject to changes as may be required by the relevant authorities. The balconies and PES shall not be enclosed unless with approved screen. For an illustration of the approved balcony screen, please refer to the diagram annexed hereto as "Annexure".

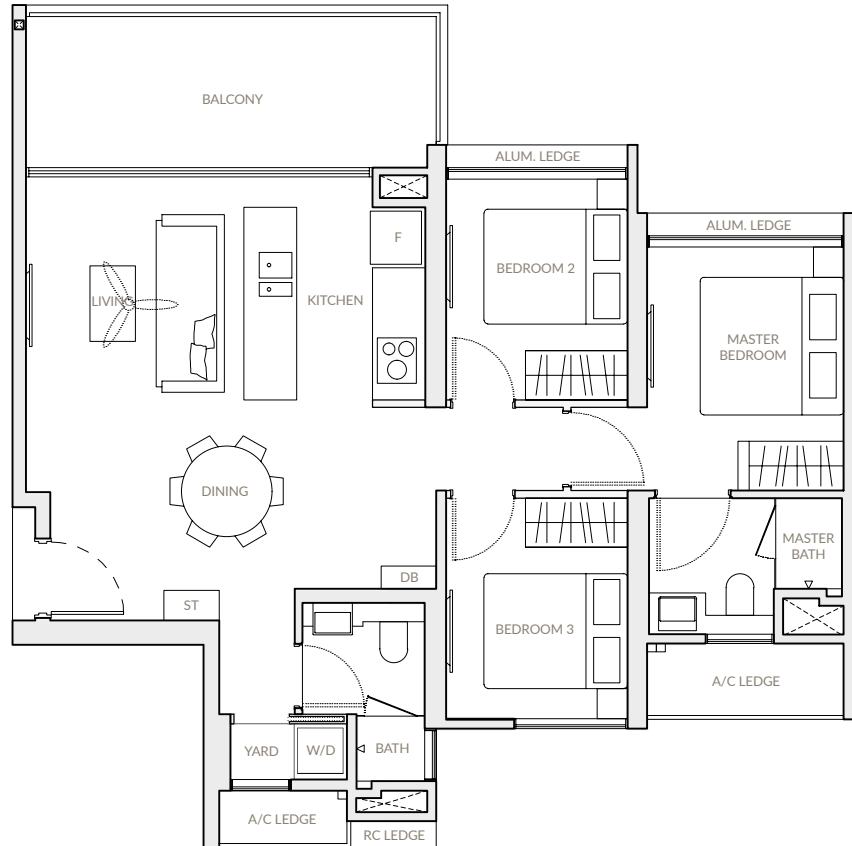
3-BEDROOM (Variant Layout)

TYPE D3-V
89 sqm | 958 sqft

TYPE D3-V

Block 15
#04-06

Block 31
#04-55



Notes: Area includes A/C ledge, balconies, PES and void where applicable. Areas are estimates only and are subject to final survey. Plans are not to scale and subject to changes as may be required by the relevant authorities. The balconies and PES shall not be enclosed unless with approved screen. For an illustration of the approved balcony screen, please refer to the diagram annexed hereto as "Annexure".

3-BEDROOM DELUXE

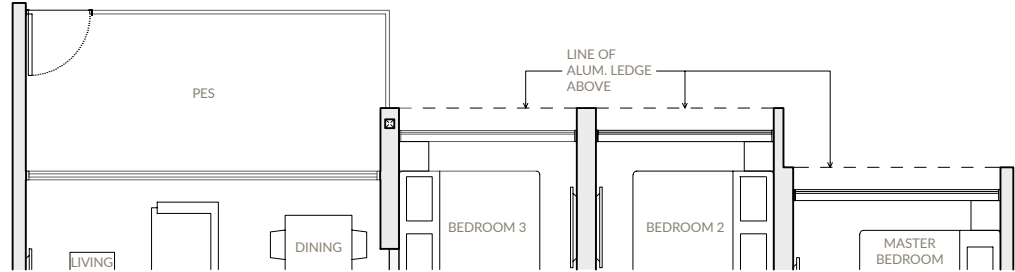
TYPE E1

100 sqm | 1,076 sqft

TYPE E1-P

Block 29

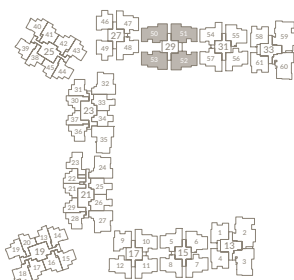
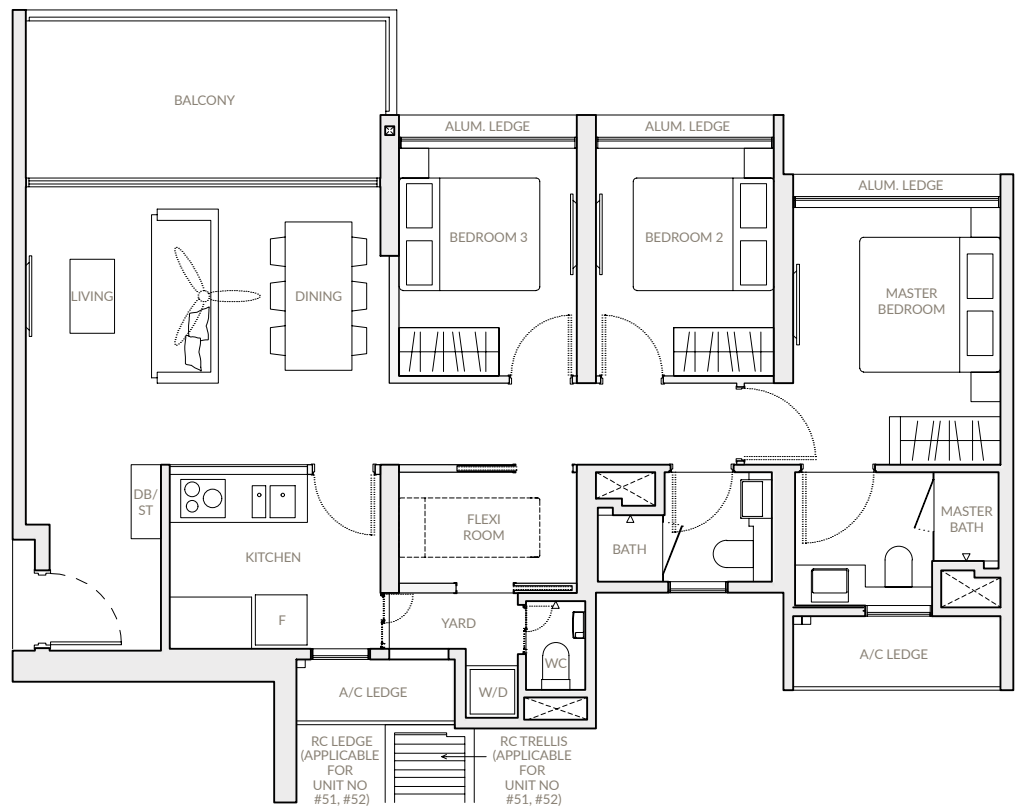
- #03-50 (Mirrored)
- #03-51
- #03-52 (Mirrored)
- #03-53



TYPE E1

Block 29

- #04-50 to #13-50 (Mirrored)
- #04-51 to #13-51
- #04-52 to #13-52 (Mirrored)
- #04-53 to #13-53



Notes: Area includes A/C ledge, balconies, PES and void where applicable. Areas are estimates only and are subject to final survey. Plans are not to scale and subject to changes as may be required by the relevant authorities. The balconies and PES shall not be enclosed unless with approved screen. For an illustration of the approved balcony screen, please refer to the diagram annexed hereto as "Annexure".

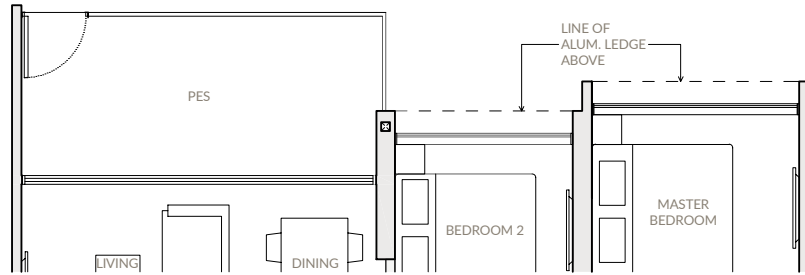
3-BEDROOM DELUXE

TYPE E2
104 sqm | 1,119 sqft

TYPE E2-P

Block 21
#03-24 (Mirrored)
#03-27

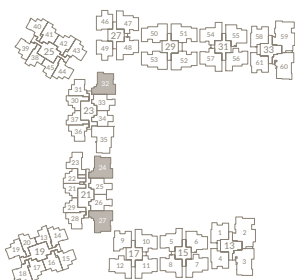
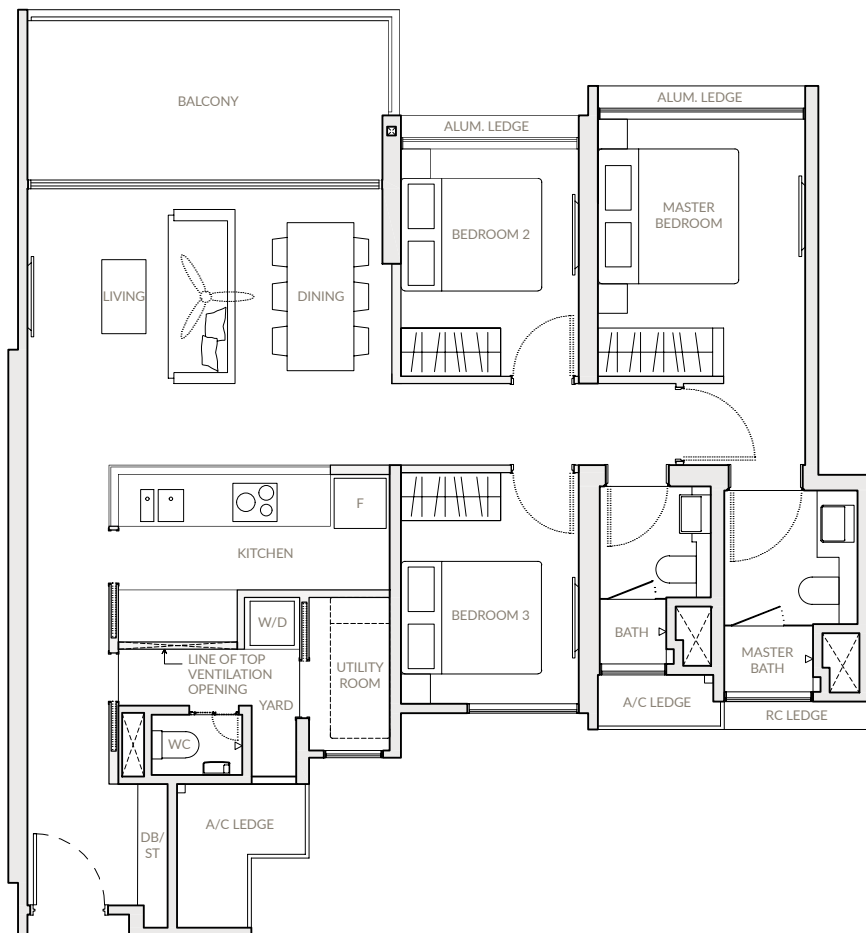
Block 23
#03-32 (Mirrored)



TYPE E2

Block 21
#04-24 to #13-24 (Mirrored)
#04-27 to #13-27

Block 23
#04-32 to #13-32 (Mirrored)



Notes: Area includes A/C ledge, balconies, PES and void where applicable. Areas are estimates only and are subject to final survey. Plans are not to scale and subject to changes as may be required by the relevant authorities. The balconies and PES shall not be enclosed unless with approved screen. For an illustration of the approved balcony screen, please refer to the diagram annexed hereto as "Annexure".

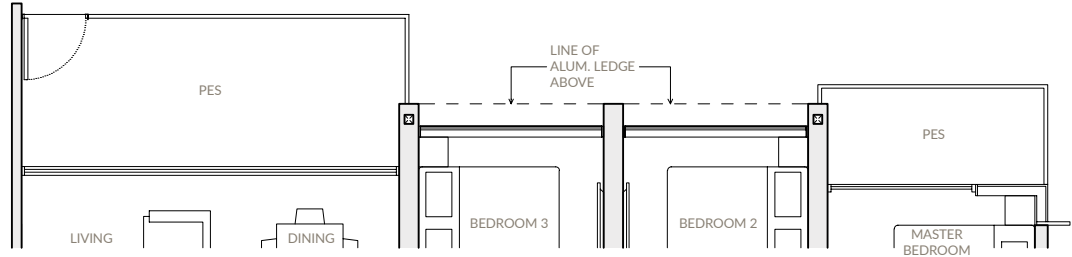
4-BEDROOM

TYPE F1

TYPE F1-P
117 sqm | 1,259 sqft

Block 13
#03-03

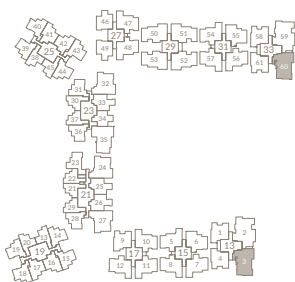
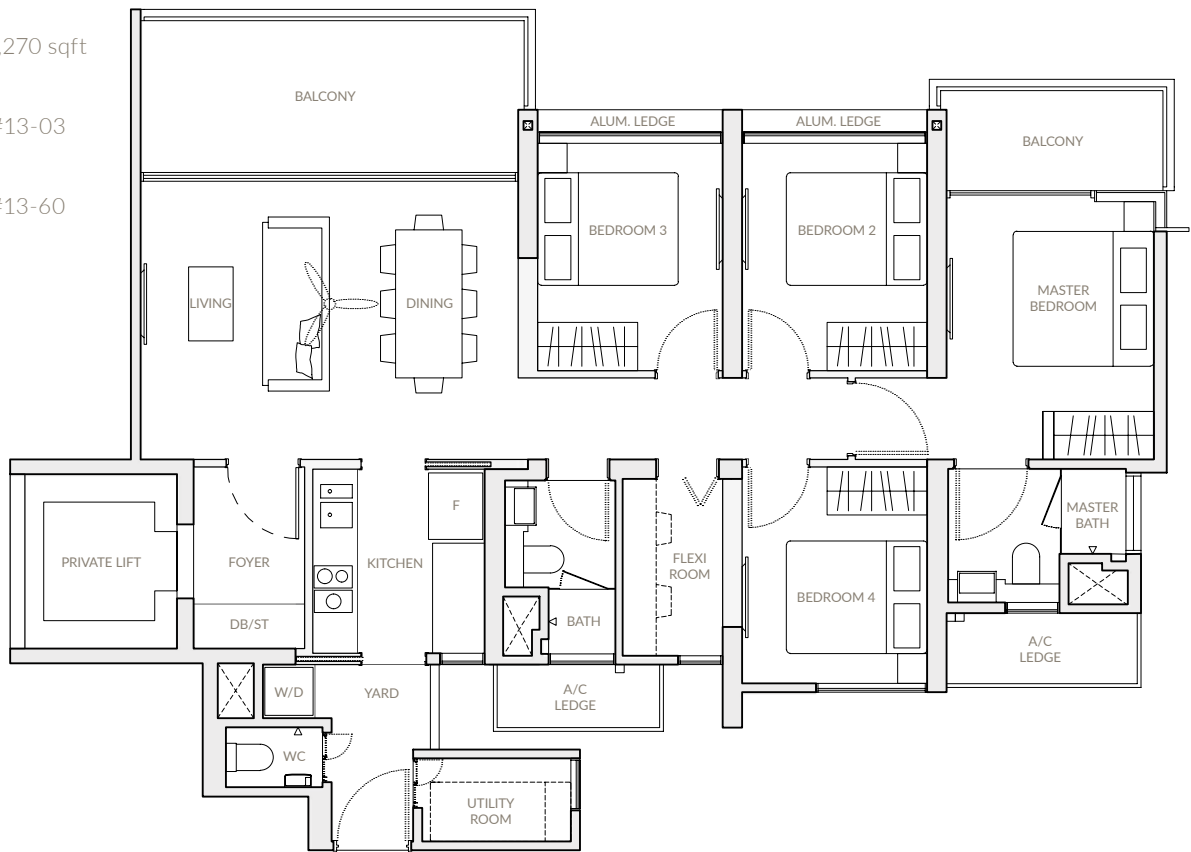
Block 33
#03-60



TYPE F1
118 sqm | 1,270 sqft

Block 13
#05-03 to #13-03

Block 33
#05-60 to #13-60



Notes: Area includes A/C ledge, balconies, PES and void where applicable. Areas are estimates only and are subject to final survey. Plans are not to scale and subject to changes as may be required by the relevant authorities. The balconies and PES shall not be enclosed unless with approved screen. For an illustration of the approved balcony screen, please refer to the diagram annexed hereto as "Annexure".

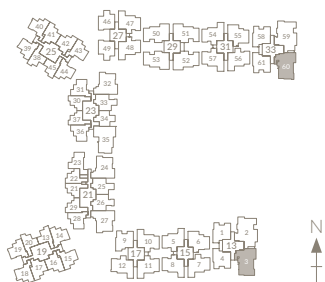
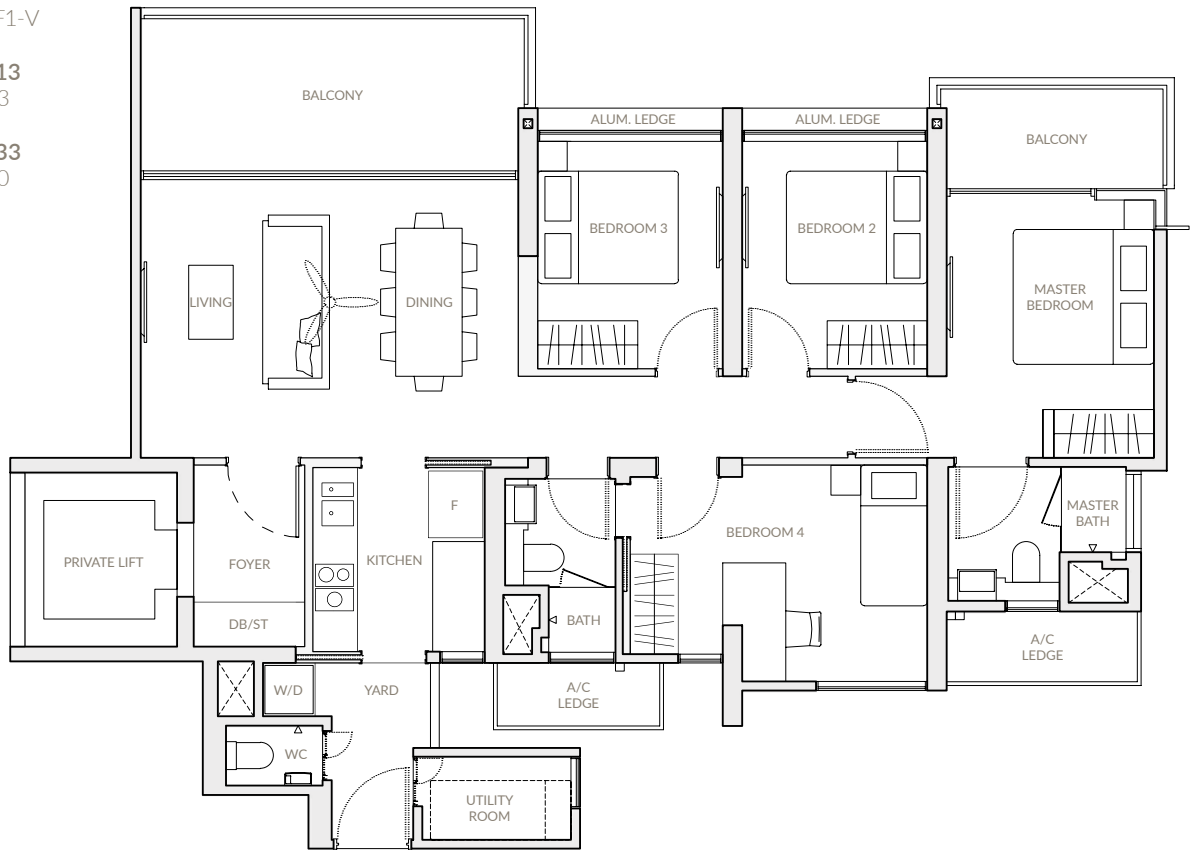
4-BEDROOM (Variant Layout)

TYPE F1-V
118 sqm | 1,270 sqft

TYPE F1-V

Block 13
#04-03

Block 33
#04-60



Notes: Area includes A/C ledge, balconies, PES and void where applicable. Areas are estimates only and are subject to final survey. Plans are not to scale and subject to changes as may be required by the relevant authorities. The balconies and PES shall not be enclosed unless with approved screen. For an illustration of the approved balcony screen, please refer to the diagram annexed hereto as "Annexure".

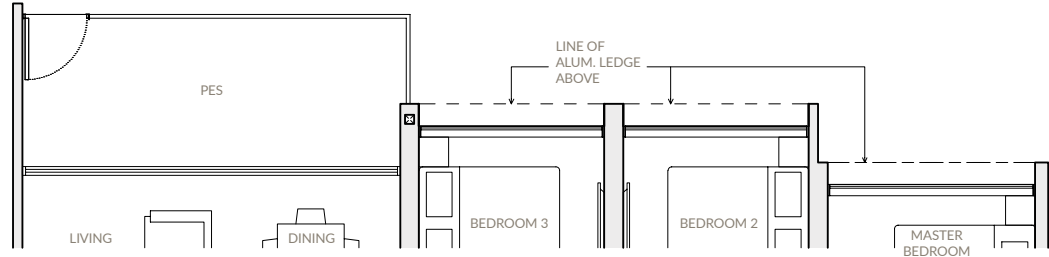
4-BEDROOM

TYPE F2

119 sqm | 1,281 sqft

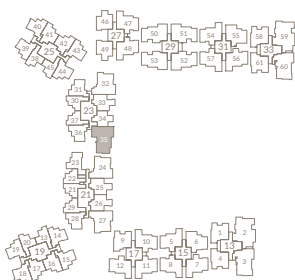
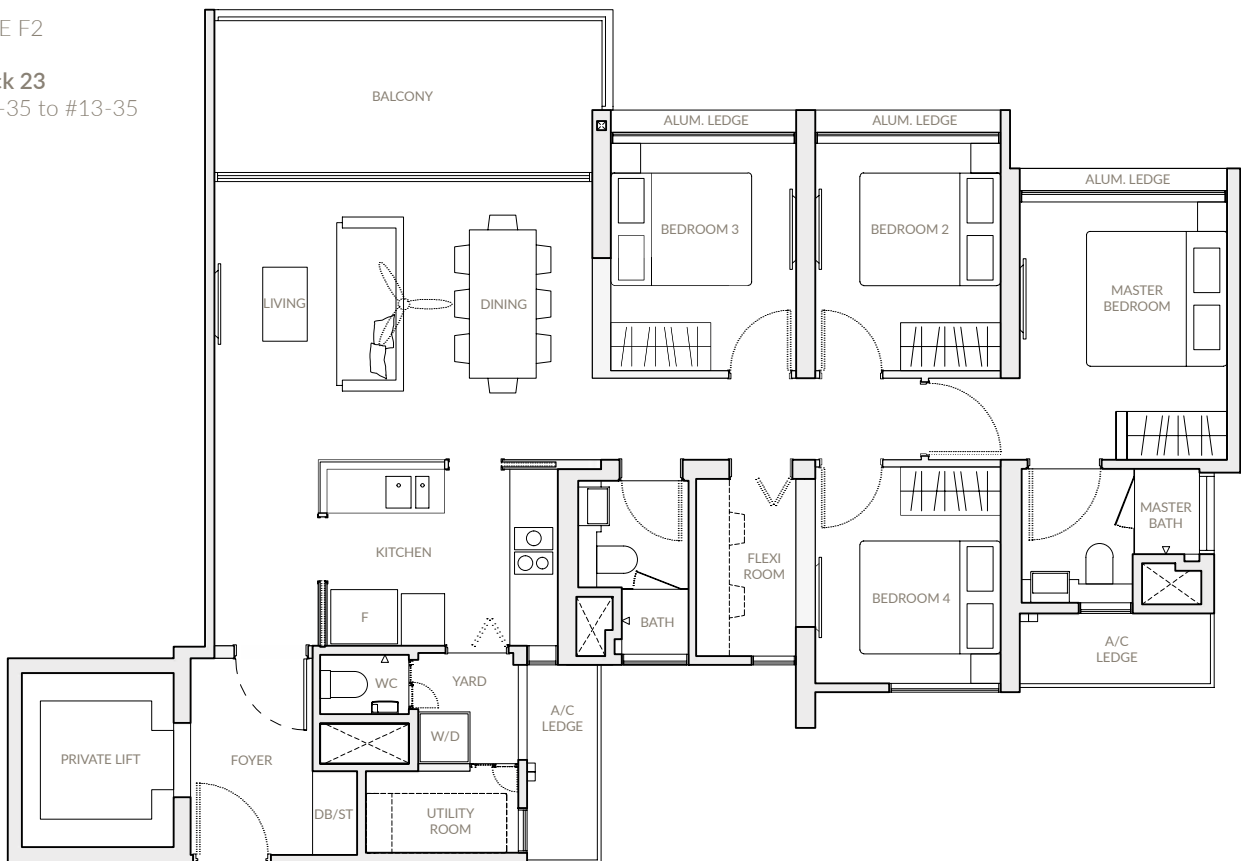
TYPE F2-P

Block 23
#03-35



TYPE F2

Block 23
#05-35 to #13-35



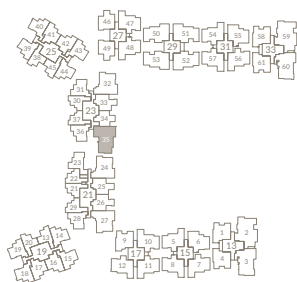
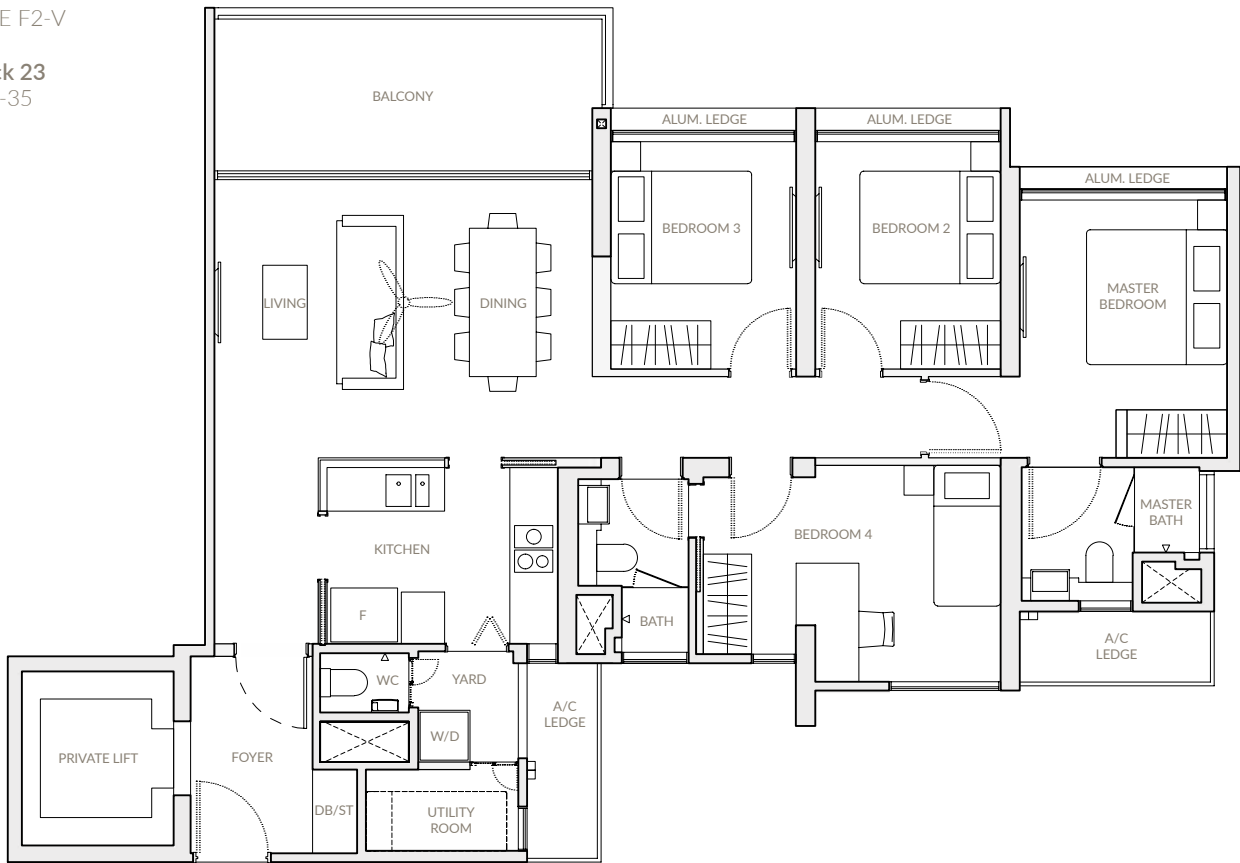
Notes: Area includes A/C ledge, balconies, PES and void where applicable. Areas are estimates only and are subject to final survey. Plans are not to scale and subject to changes as may be required by the relevant authorities. The balconies and PES shall not be enclosed unless with approved screen. For an illustration of the approved balcony screen, please refer to the diagram annexed hereto as "Annexure".

**4-BEDROOM
(Variant Layout)**

TYPE F2-V
119 sqm | 1,281 sqft

TYPE F2-V

Block 23
#04-35



Notes: Area includes A/C ledge, balconies, PES and void where applicable. Areas are estimates only and are subject to final survey. Plans are not to scale and subject to changes as may be required by the relevant authorities. The balconies and PES shall not be enclosed unless with approved screen. For an illustration of the approved balcony screen, please refer to the diagram annexed hereto as "Annexure".

4-BEDROOM DELUXE

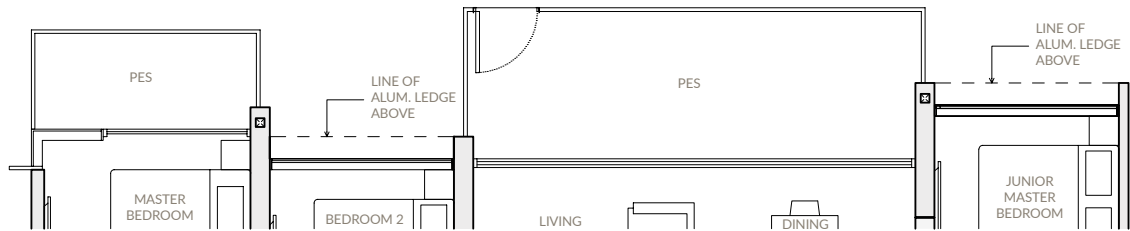
TYPE G

137 sqm | 1,475 sqft

TYPE G-P

Block 13
#03-02

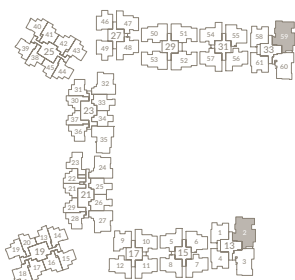
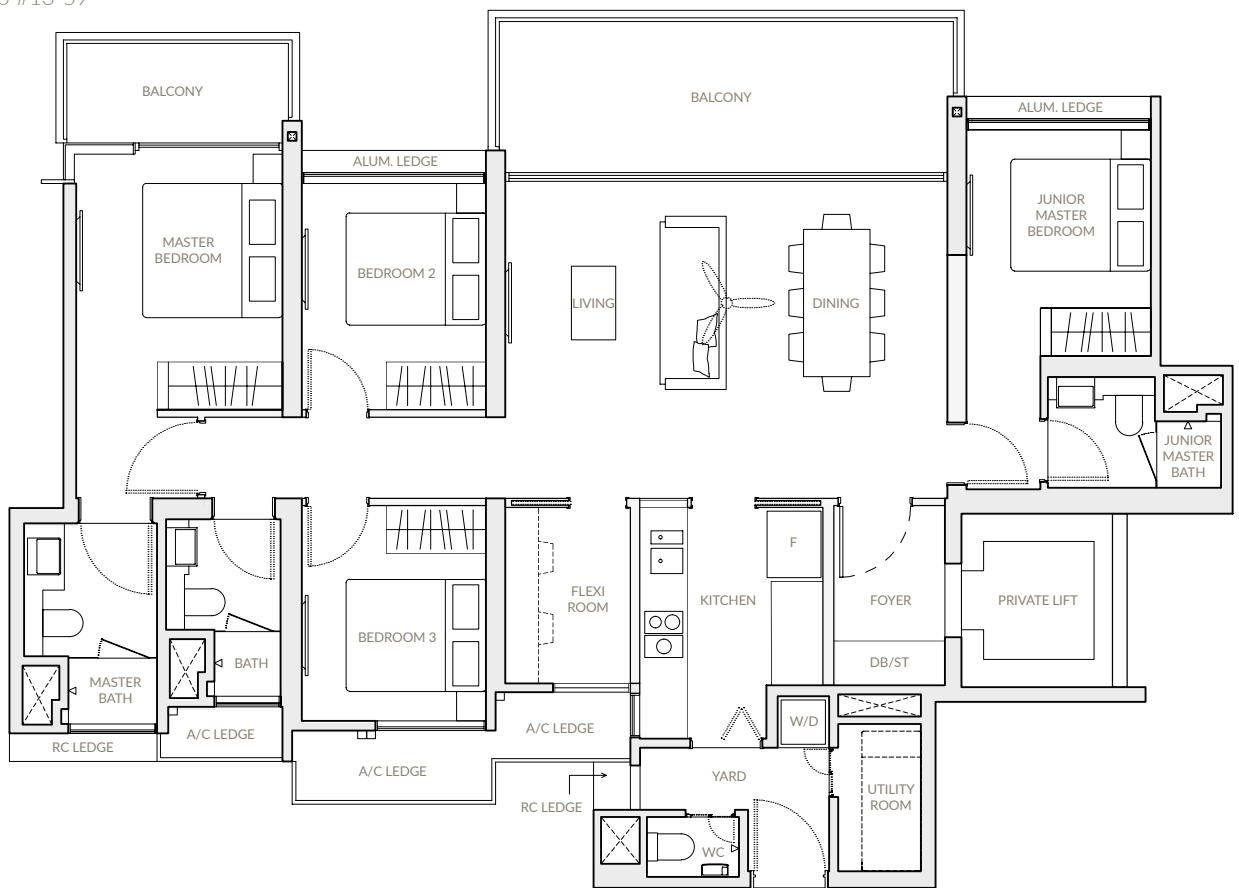
Block 33
#03-59



TYPE G

Block 13
#05-02 to #13-02

Block 33
#05-59 to #13-59



Notes: Area includes A/C ledge, balconies, PES and void where applicable. Areas are estimates only and are subject to final survey. Plans are not to scale and subject to changes as may be required by the relevant authorities. The balconies and PES shall not be enclosed unless with approved screen. For an illustration of the approved balcony screen, please refer to the diagram annexed hereto as "Annexure".

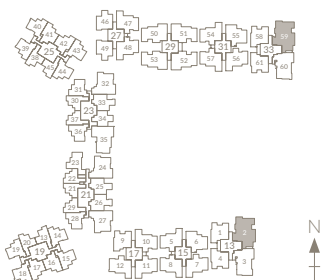
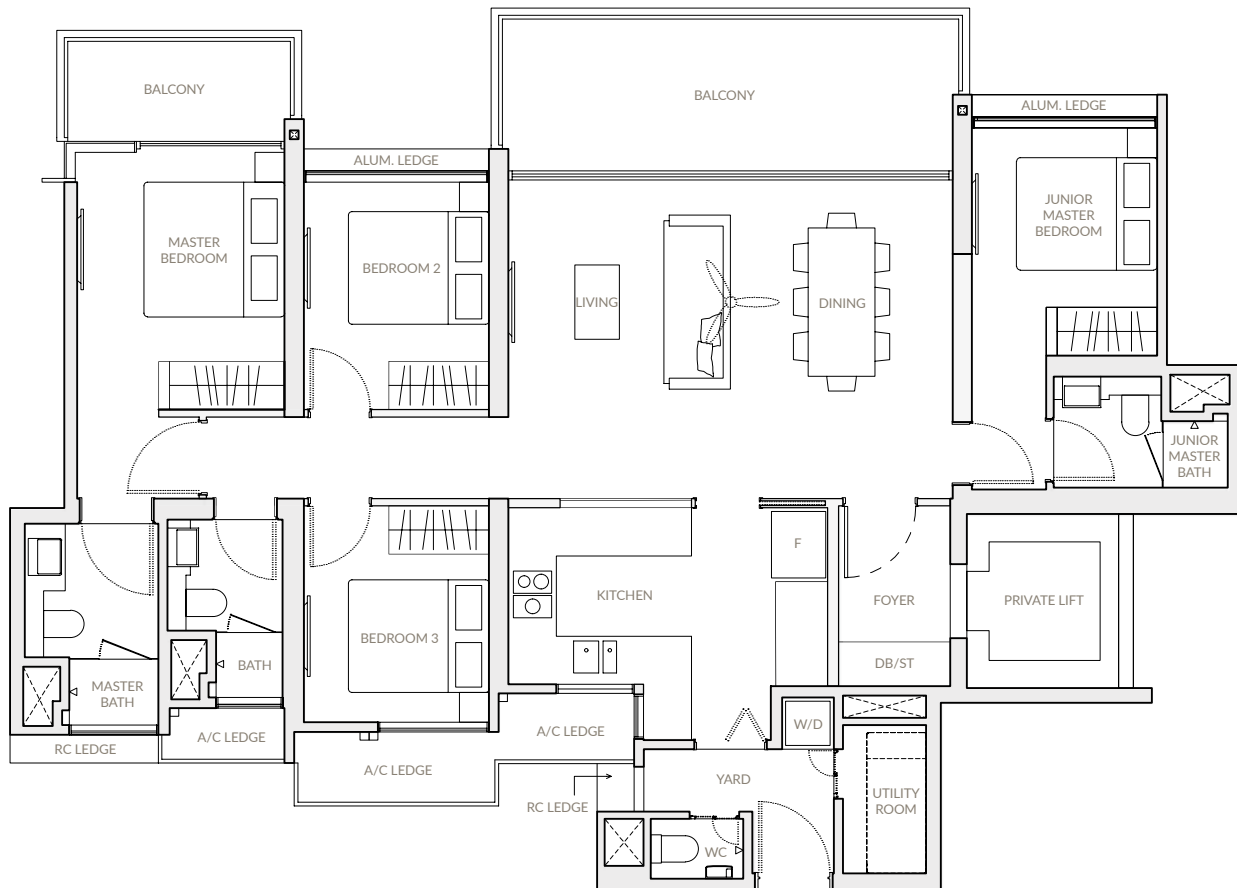
**4-BEDROOM DELUXE
(Variant Layout)**

TYPE G-V
137 sqm | 1,475 sqft

TYPE G-V

Block 13
#04-02

Block 33
#04-59



Notes: Area includes A/C ledge, balconies, PES and void where applicable. Areas are estimates only and are subject to final survey. Plans are not to scale and subject to changes as may be required by the relevant authorities. The balconies and PES shall not be enclosed unless with approved screen. For an illustration of the approved balcony screen, please refer to the diagram annexed hereto as "Annexure".

ANNEXURE

Approved Typical Balcony/PES Screen Design

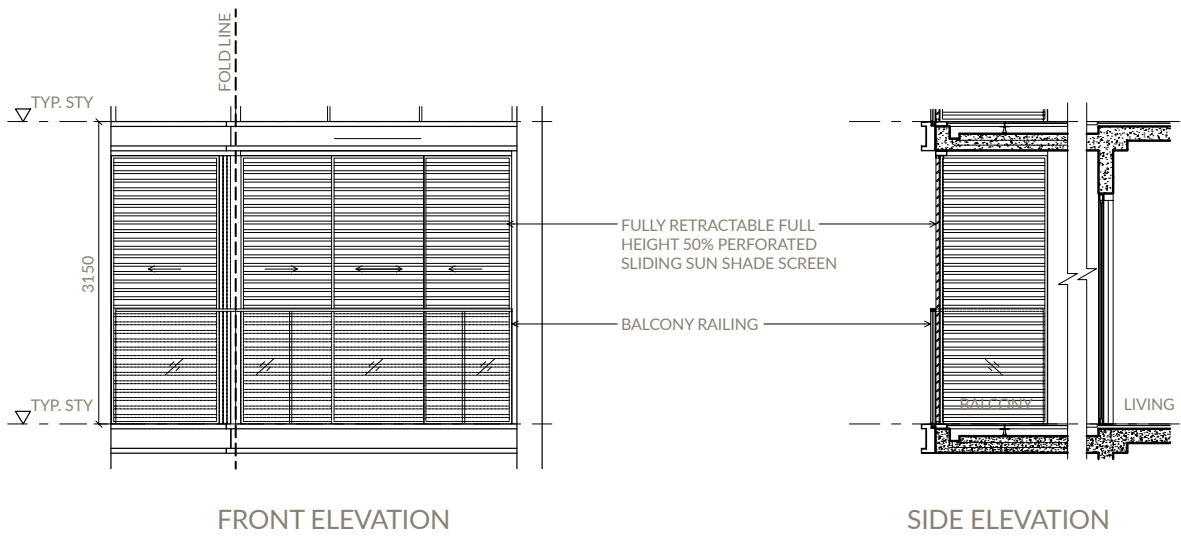


ILLUSTRATION OF TYPICAL BALCONY SCREEN APPROVED BY URA

Notes: Balcony/PES screens are not provided by the Developer. The cost of the screen and installation shall be borne by the Purchaser. Actual profile of the screen is subjected to the manufacturer's details. The proposed balcony screen allows natural ventilation at all times (including the times when the screen is fully enclosed).

