

PROJECT INFORMATION

Developer	UVD (PROJECTS) PTE. LTD. (joint venture company of UOL Group and United Industrial Corporation (UIC))
Project Name	The Tre Ver
Location / Address	Blk 60, 62, 64, 66, 68, 70, 72, 74 and 76 Potong Pasir Ave 1
Tenure of Land	99 years commencing on 27 March 2018
Site Area	Approx 201,405 sqft
Expected Vacant Possession	19 August 2022
District	13
No. of Blocks/ Storeys	Tower blocks 3 blocks of 20 storey & 2 blocks of 19 storey Garden blocks 4 blocks of 7 storey including 2 storey carparks and 1 basement carpark
No. of Units	729

Unit Mix

Type			Area (sqft)	Total Units	
1-Bedroom (484 – 506 sqft)	Tower Blk	A2/ A2P	495	66	159
	Tower Blk	A3	495	36	
	Tower Blk	A4/ A4P	506	49	
	Garden Blk	A1	484	8	
2-Bedroom (614 – 646 sqft)	Tower Blk	B1	614	32	109
	Tower Blk	B2/ B2P	624	32	
	Tower Blk	B3/ B3P	646	30	
	Garden Blk	B4/ B4P	635	15	
2-Bedroom Premium (689 – 797 sqft)	Tower Blk	B5	689	36	272
	Tower Blk	B6/ B6P	700	115	
	Tower Blk	B7/ B7P	743	81	
	Tower Blk	B8/ B8P	753	32	
	Garden Blk	B9	797	8	
3-Bedroom (1,012 sqft)	Tower Blk	C1	1,012	36	36
3-Bedroom Premium (1,055 – 1,109 sqft)	Tower Blk	C3/ C3P	1,098	36	126
	Tower Blk	C4	1,098	36	
	Tower Blk	C5/ C5P	1,109	34	
	Garden Blk	C2/ C2P	1,055	10	
	Garden Blk	C6/ C6P	1,098	10	
4-Bedroom (1,335 – 1378 sqft)	Tower Blk	D2/ D2P	1,378	17	27
	Garden Blk	D1/ D1P	1,335	10	
Total				729	729

Information is subject to change without prior notice (3 July 2018)



Artist's Impression

Raintree Valley (2ND STOREY)

GARDEN VALLEY

1. Waterfall Garden
2. Arrival
3. Waiting Lounge
4. E-Post Station
5. Guard House
6. Flora Lane (1ST STOREY)
7. Side Gate

RECREATION DECK

8. Karaoke Rooms
9. Herb Garden
10. BBQ Cabana
11. Raintree Cabana
12. Sensory Patio
13. Falling Water

ADVENTURE DECK

14. Climbing Cave
15. Raintree Web
16. Balancing Bridge
17. Whispering Corner
18. Bouncing Pit
19. Cycling Stop
20. Skipping Pond
21. Hilly Trail
22. Laundrette (1ST STOREY)

Village Plaza (3RD STOREY)

GALLERY POOL

23. Clubhouse
 - a. Dining Suite
 - b. Gym
 - c. Music Room
 - d. Studio
 - e. Library
 - f. Changing Room
 - g. Pool Room
 - h. Games Room
 - i. Private Dining (with Verandah)
 - j. Pool Verandah

24. Hilltop Play
25. Reflection Pool
26. Poolside Lounge
27. Massage Edge

PLAZA POOL

28. Waterplay
29. Bubble Island
30. Hammock Island
31. Aqua Gym
32. 50m Lap Pool
33. Shallow Water
34. Poolside Cove
35. Outdoor Shower
36. Infinity Pool
37. Palm Grove

LOUNGE POOL

38. Outdoor Spas
39. Water Swings
40. Jacuzzi Coves
41. Jacuzzi Bed
42. Garden Well
- A. Bin Centre (2ND STOREY)
- B. Substation (1ST STOREY)
- C. Generator (2ND STOREY)
- Water Tank (ROOF)

2ND & 3RD STOREY PLAN

8TH STOREY

N
PLAN IS NOT DRAWN TO SCALE



Sky Loft (8TH STOREY)

ENTERTAINMENT LOFT

- 43. BBQ Pavilion
- 44. Grill Pavilion
- 45. Teppanyaki Pavilion

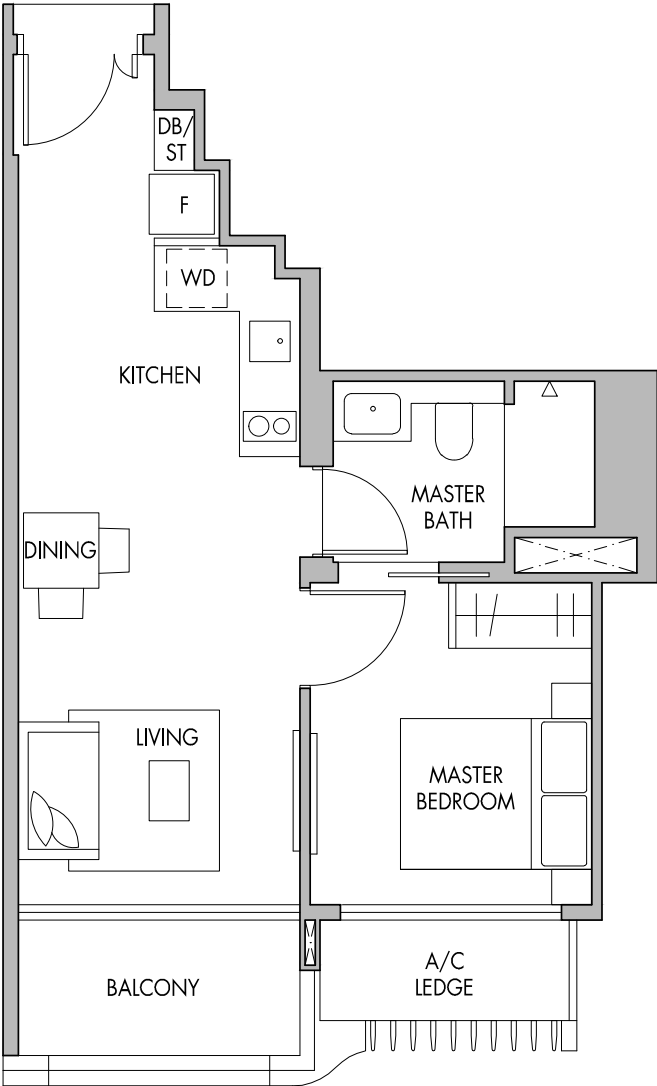
LEISURE LOFT

- 46. Function Loft
- 47. Multipurpose Lounge
- 48. Activity Alcoves

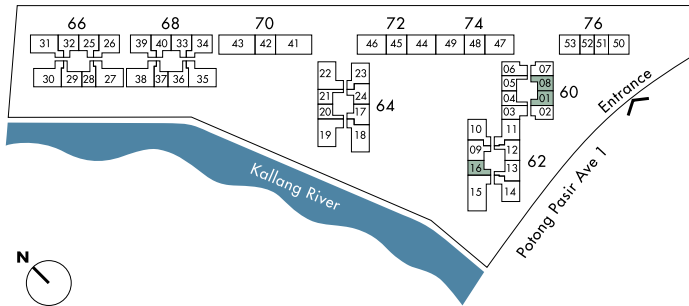
WELLNESS LOFT

- 49. Fitness Stations
- 50. Workout Corner
- 51. Stretching Corner
- 52. Physio Corner

PLAN



TOWER BLOCK



Block 60

#04-01 to #19-01

(Mirrored) #04-08 to #19-08

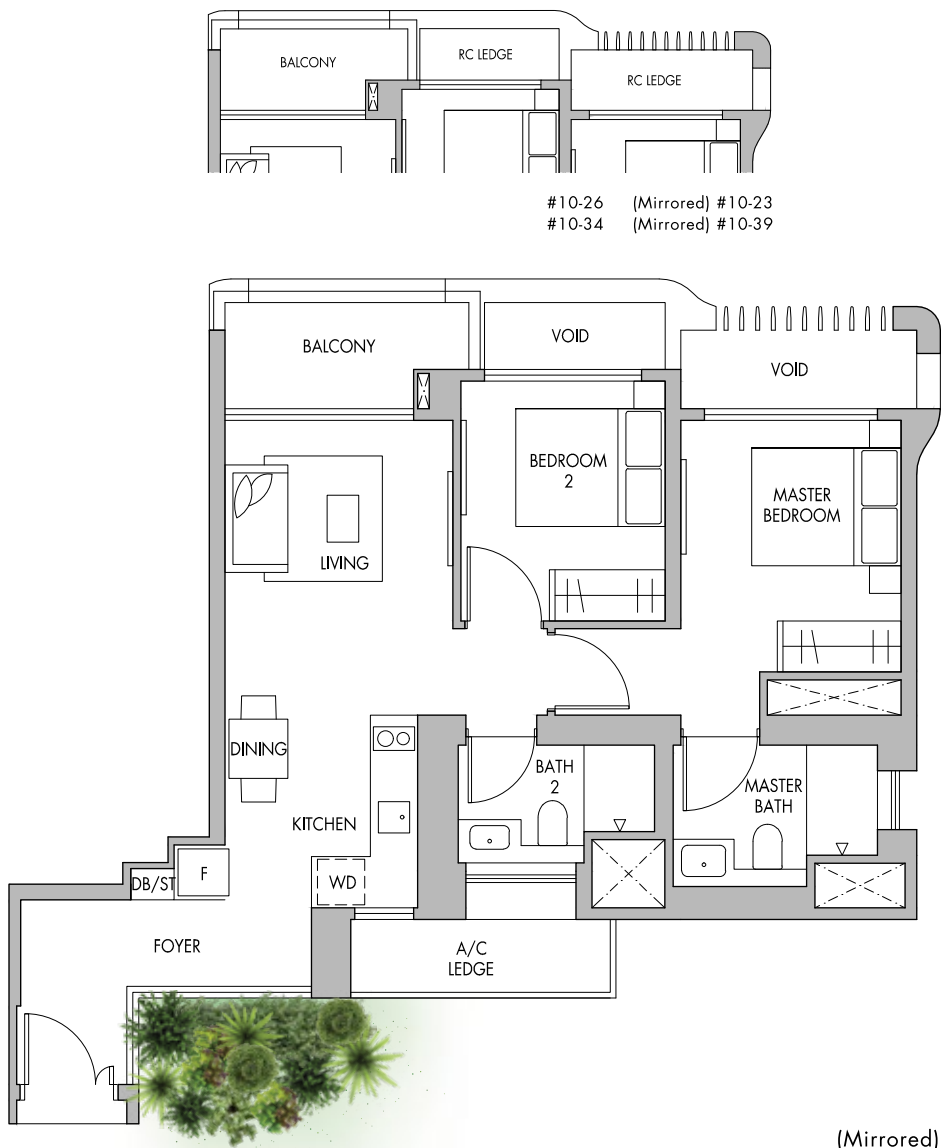
Block 62

(Mirrored) #04-16 to #19-16

47sq.m. | 506 sq.ft.

Area includes A/C ledge, balconies and void (if applicable). The above plans and illustrations are subject to changes as may be required by the relevant authorities. Areas are estimates only and are subject to final survey. The balcony shall not be enclosed unless with the approved screen. For an illustration of the approved balcony screen, please refer to the diagram annexed hereto as 'Annexure 1'.

SHOW SUITE



#10-26 (Mirrored) #10-23

#10-34 (Mirrored) #10-39

TOWER BLOCK

Block 62

#04-10 to #19-10

Block 64

(Mirrored) #04-23 to #07-23

(Mirrored) #10-23

(Mirrored) #11-23 to #20-23

Block 66

#04-26 to #07-26

#10-26

#11-26 to #20-26

Block 68

#04-34 to #07-34

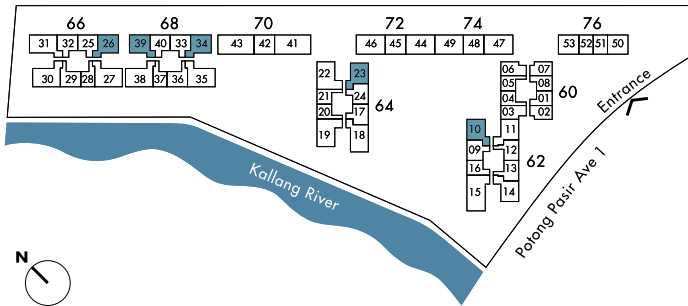
#10-34

#11-34 to #20-34

(Mirrored) #04-39 to #07-39

(Mirrored) #10-39

(Mirrored) #11-39 to #20-39



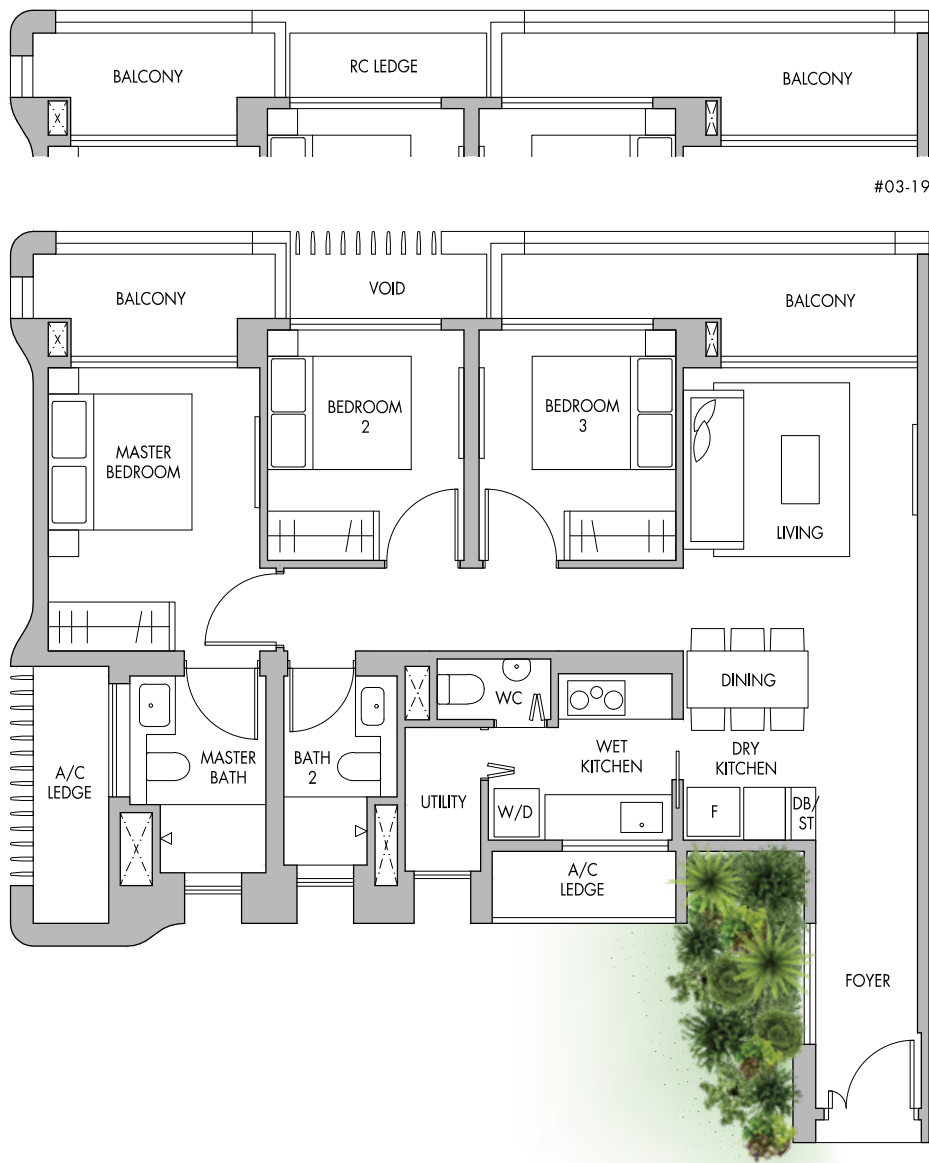
69 sq.m. | 743 sq.ft.

Area includes A/C ledge, balconies and void (if applicable). The above plans and illustrations are subject to changes as may be required by the relevant authorities. Areas are estimates only and are subject to final survey. The balcony shall not be enclosed unless with the approved screen. For an illustration of the approved balcony screen, please refer to the diagram annexed hereto as 'Annexure 1'.

3-Bedroom Premium

TYPE C3

SHOW SUITE



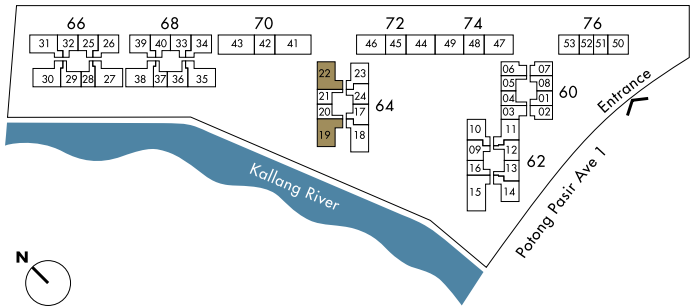
#03-19

TOWER BLOCK

Block 64

- #03-19
- #04-19 to #20-19
- #04-22 to #20-22 (Mirrored)

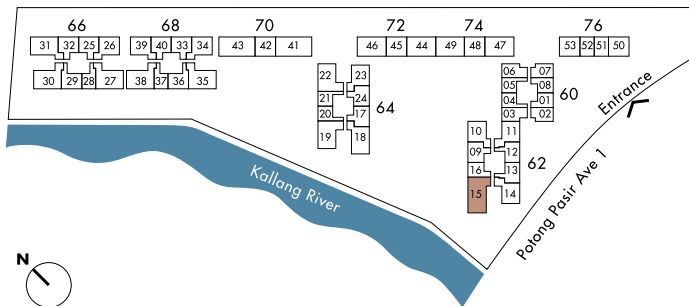
102 sq.m. | 1,098 sq.ft.



Area includes A/C ledge, balconies and void (if applicable). The above plans and illustrations are subject to changes as may be required by the relevant authorities. Areas are estimates only and are subject to final survey. The balcony shall not be enclosed unless with the approved screen. For an illustration of the approved balcony screen, please refer to the diagram annexed hereto as 'Annexure 1'.



TOWER BLOCK

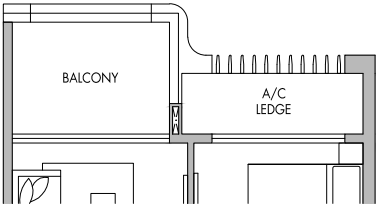
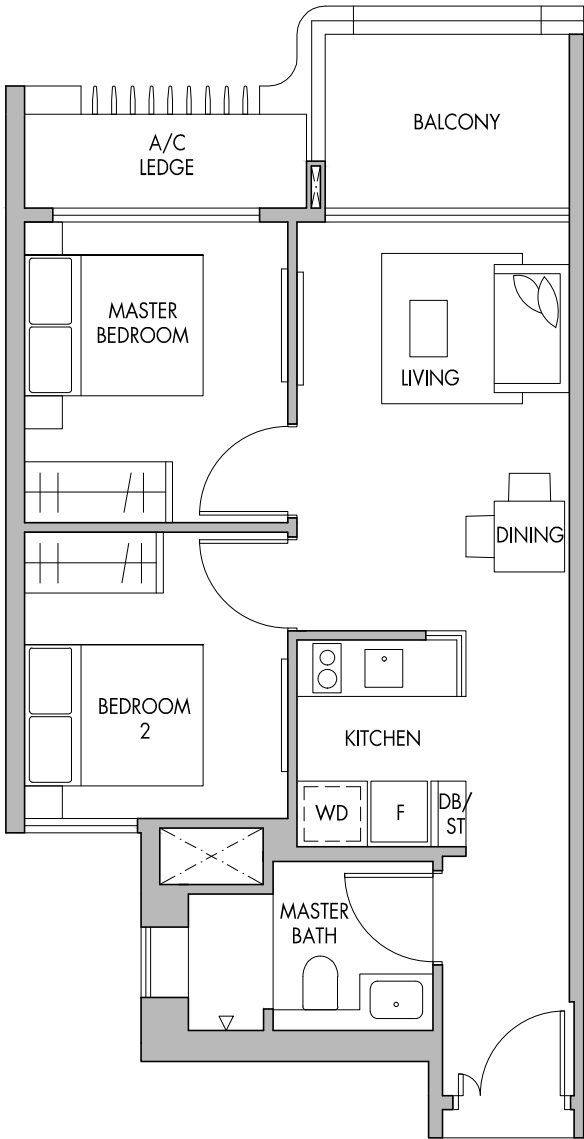


Block 62
#04-15 to #19-15

128 sq.m. | 1,378 sq.ft.

Area includes A/C ledge, balconies and void (if applicable). The above plans and illustrations are subject to changes as may be required by the relevant authorities. Areas are estimates only and are subject to final survey. The balcony shall not be enclosed unless with the approved screen. For an illustration of the approved balcony screen, please refer to the diagram annexed hereto as 'Annexure 1'.

2-Bedroom
TYPE B3



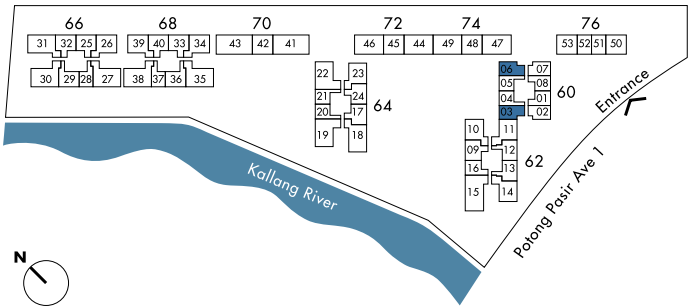
#04-06 to #07-06
#10-06 to #19-06

TOWER BLOCK

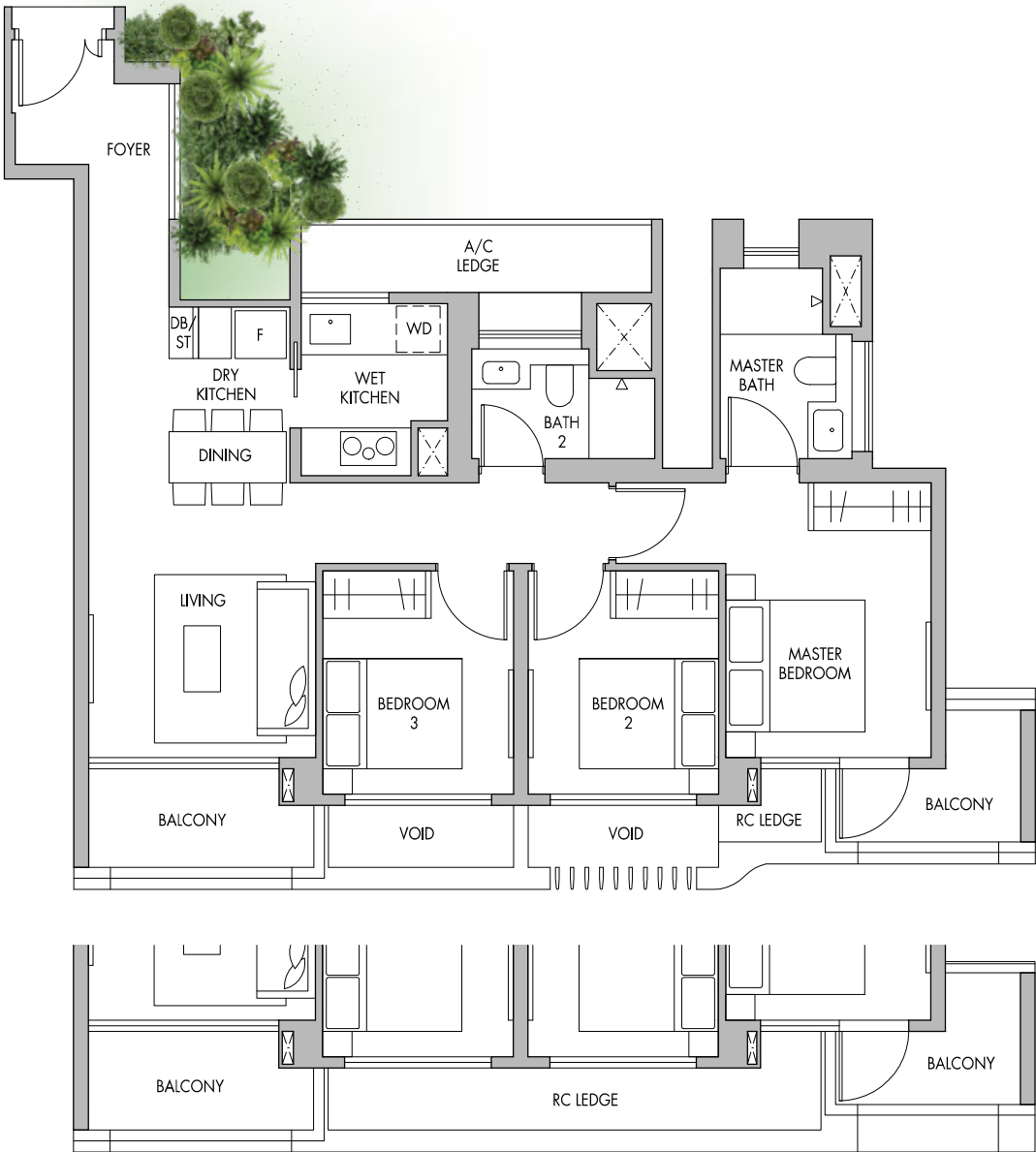
Block 60

- #04-03 to #07-03
- #10-03 to #19-03
- #04-06 to #07-06
- #10-06 to #19-06

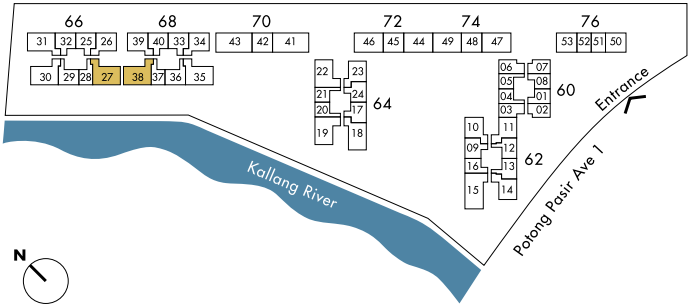
60 sq.m. | 646 sq.ft.



Area includes A/C ledge, balconies and void (if applicable). The above plans and illustrations are subject to changes as may be required by the relevant authorities. Areas are estimates only and are subject to final survey. The balcony shall not be enclosed unless with the approved screen. For an illustration of the approved balcony screen, please refer to the diagram annexed hereto as 'Annexure 1'.



#03-27
(Mirrored) #03-38



Block 66
#03-27
#04-27 to #20-27

Block 68
(Mirrored) #03-38
(Mirrored) #04-38 to #20-38

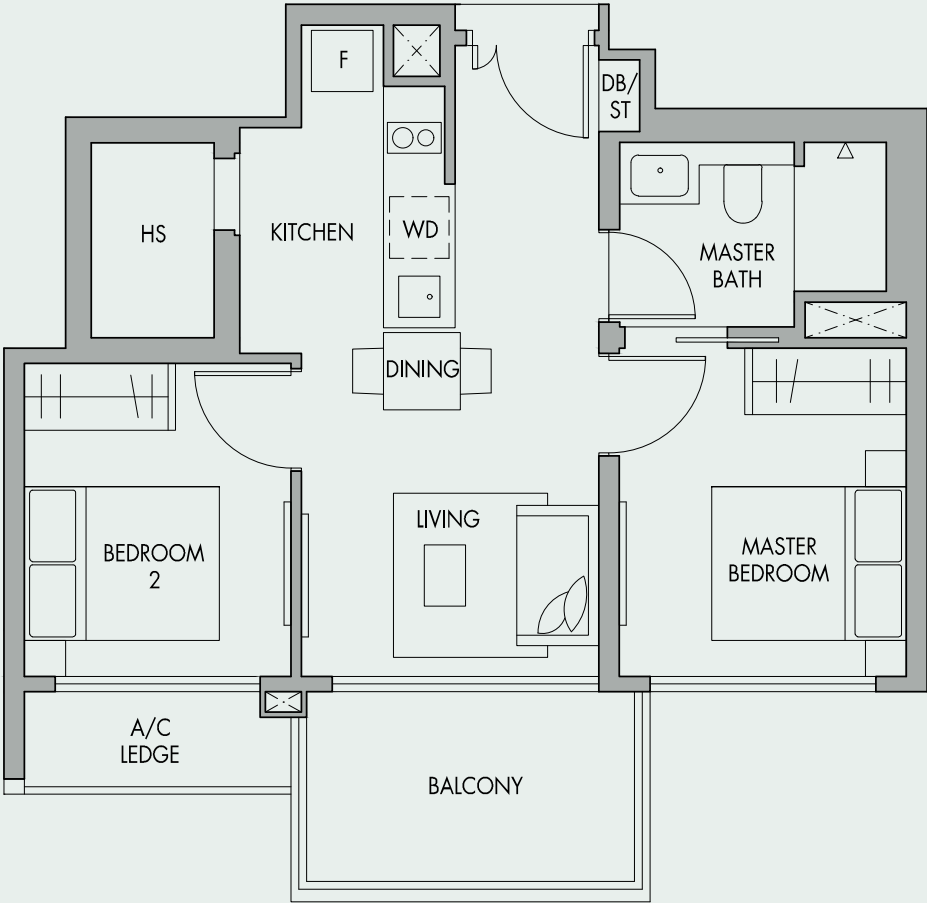
94 sq.m. | 1,012 sq.ft.

Area includes A/C ledge, balconies and void (if applicable). The above plans and illustrations are subject to changes as may be required by the relevant authorities. Areas are estimates only and are subject to final survey. The balcony shall not be enclosed unless with the approved screen. For an illustration of the approved balcony screen, please refer to the diagram annexed hereto as 'Annexure 1'.

TOWER BLOCK

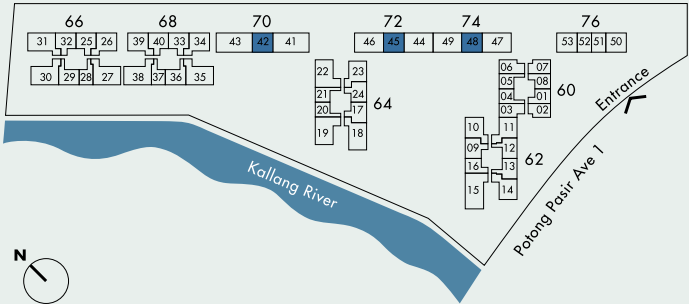
2-Bedroom
TYPE B4

GARDEN BLOCK

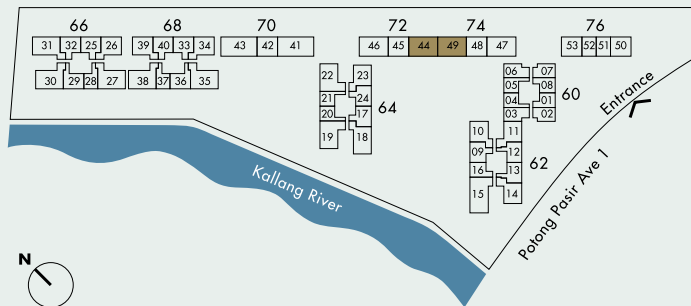


- Block 70**
#04-42 to #07-42
- Block 72**
#04-45 to #07-45
- Block 74**
#04-48 to #07-48 (Mirrored)

59 sq.m. | 635 sq.ft.



Area includes A/C ledge, balconies and void (if applicable). The above plans and illustrations are subject to changes as may be required by the relevant authorities. Areas are estimates only and are subject to final survey. The balcony shall not be enclosed unless with the approved screen. For an illustration of the approved balcony screen, please refer to the diagram annexed hereto as 'Annexure 1'.



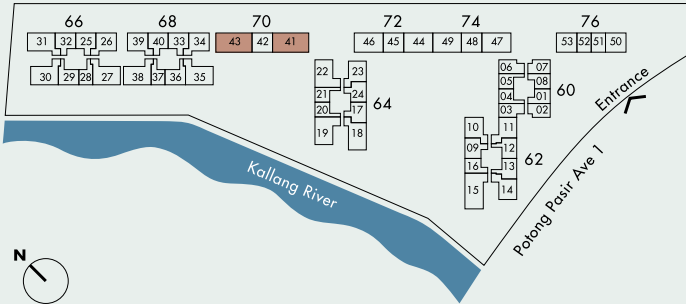
Block 72
#04-44 to #07-44

Block 74
(Mirrored) #04-49 to #07-49

102 sq.m. | 1,098 sq.ft.

Area includes A/C ledge, balconies and void (if applicable). The above plans and illustrations are subject to changes as may be required by the relevant authorities. Areas are estimates only and are subject to final survey. The balcony shall not be enclosed unless with the approved screen. For an illustration of the approved balcony screen, please refer to the diagram annexed hereto as 'Annexure 1'.

GARDEN BLOCK



Block 70

#04-41 to #07-41

(Mirrored) #04-43 to #07-43

124 sq.m. | 1,335 sq.ft.

Area includes A/C ledge, balconies and void (if applicable). The above plans and illustrations are subject to changes as may be required by the relevant authorities. Areas are estimates only and are subject to final survey. The balcony shall not be enclosed unless with the approved screen. For an illustration of the approved balcony screen, please refer to the diagram annexed hereto as 'Annexure 1'.