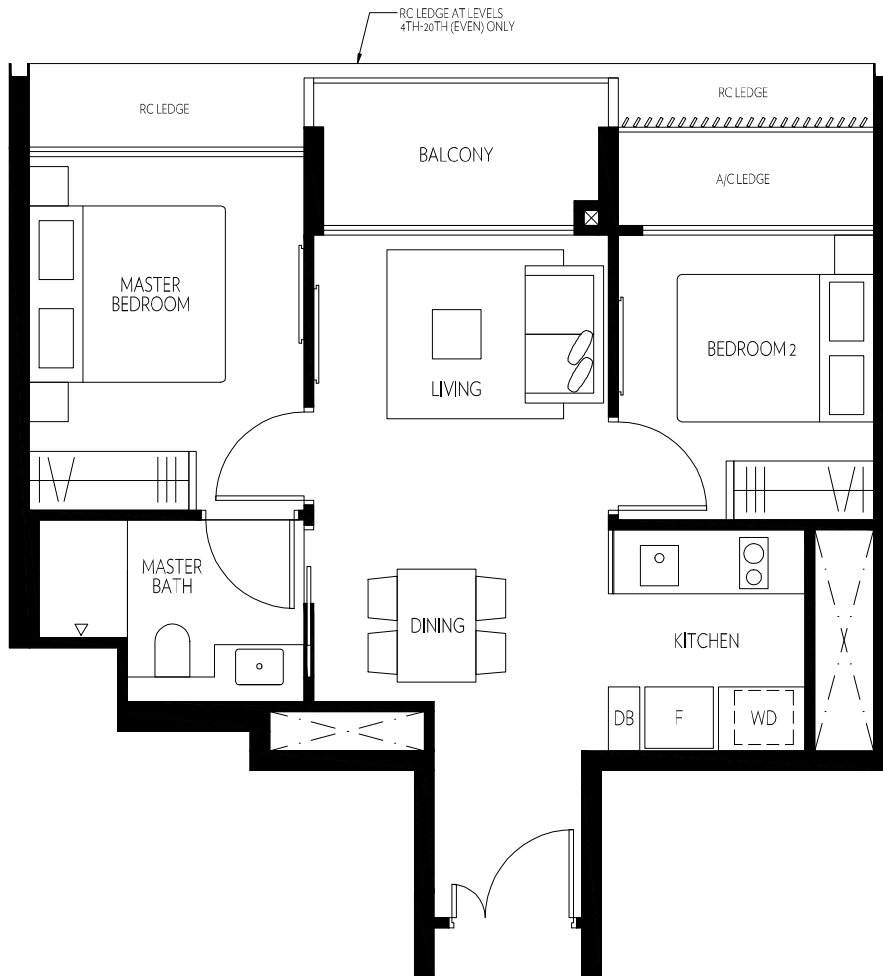


2-BEDROOM ♦ TYPE A

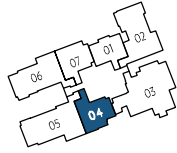
614 SQFT

#02-01 TO #20-01



AMBER45

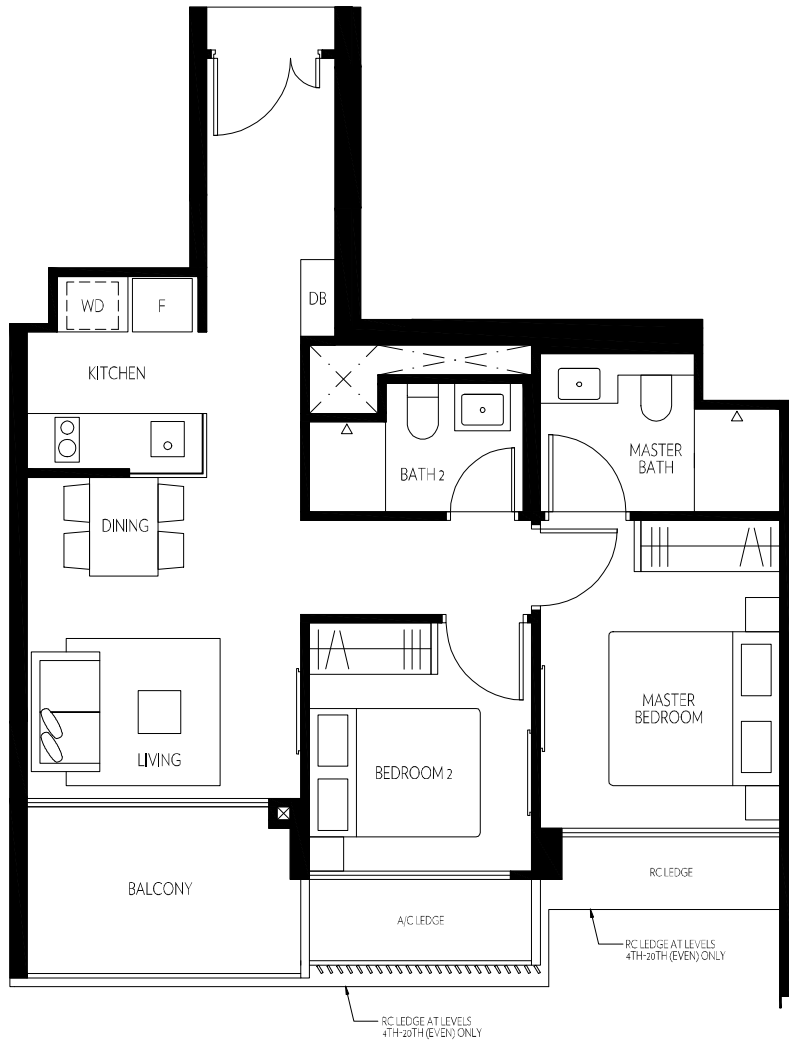
NOTE: AREA INCLUDES A/C LEDGE, BALCONY, PES, PRIVATE ROOF TERRACE AND VOID (WHERE APPLICABLE). THE ABOVE PLANS AND ILLUSTRATIONS ARE SUBJECT TO CHANGES AS MAYBE REQUIRED BY THE RELEVANT AUTHORITIES. AREAS ARE ESTIMATES ONLY AND ARE SUBJECT TO FINAL SURVEY. THE BALCONY, PES, AND PRIVATE ROOF TERRACE SHALL NOT BE ENCLOSED UNLESS WITH THE APPROVED SCREEN. FOR AN ILLUSTRATION OF THE APPROVED BALCONY SCREEN, PLEASE REFER TO THE DIAGRAM ANNEXED HERETO AS 'ANNEXURE 1'.



2-BEDROOM PREMIUM ◊ TYPE B2

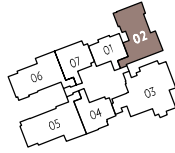
732 SQFT

#02-04 TO #20-04



AMBER45

NOTE: AREA INCLUDES A/C LEDGE, BALCONY, PES, PRIVATE ROOF TERRACE AND VOID (WHERE APPLICABLE). THE ABOVE PLANS AND ILLUSTRATIONS ARE SUBJECT TO CHANGES AS MAYBE REQUIRED BY THE RELEVANT AUTHORITIES. AREAS ARE ESTIMATES ONLY AND ARE SUBJECT TO FINAL SURVEY. THE BALCONY, PES, AND PRIVATE ROOF TERRACE SHALL NOT BE ENCLOSED UNLESS WITH THE APPROVED SCREEN. FOR AN ILLUSTRATION OF THE APPROVED BALCONY SCREEN, PLEASE REFER TO THE DIAGRAM ANNEXED HERETO AS 'ANNEXURE 1'.



3-BEDROOM + GUEST ROOM ◇ TYPE C2

1184 SQFT

#02-02 TO #20-02



AMBER⁴⁵

NOTE: AREA INCLUDES A/C LEDGE, BALCONY, PES, PRIVATE ROOF TERRACE AND VOID (WHERE APPLICABLE). THE ABOVE PLANS AND ILLUSTRATIONS ARE SUBJECT TO CHANGES AS MAYBE REQUIRED BY THE RELEVANT AUTHORITIES. AREAS ARE ESTIMATES ONLY AND ARE SUBJECT TO FINAL SURVEY. THE BALCONY, PES, AND PRIVATE ROOF TERRACE SHALL NOT BE ENCLOSED UNLESS WITH THE APPROVED SCREEN. FOR AN ILLUSTRATION OF THE APPROVED BALCONY SCREEN, PLEASE REFER TO THE DIAGRAM ANNEXED HERETO AS 'ANNEXURE 1'.