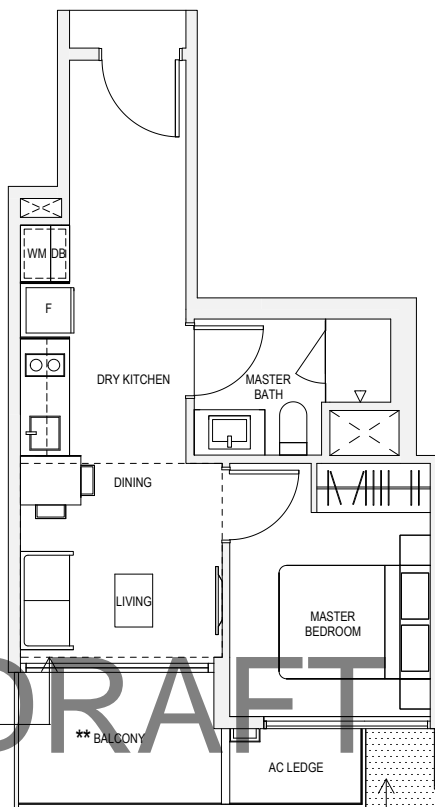


TYPE A1
43sqm / 463sqft
#02-06, #03-06, #04-06,
#02-31, #03-31, #04-31



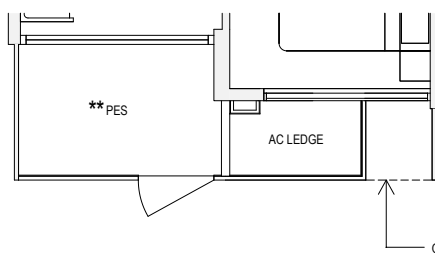
TYPE A1H
50sqm / 538sqft*
#05-06, #05-31

* AREA OF 50sqm / 538sqft IS INCLUSIVE OF STRATA VOID AREA OF 7sqm / 75sqft ABOVE LIVING AND DINING AS PER DOTTED LINE

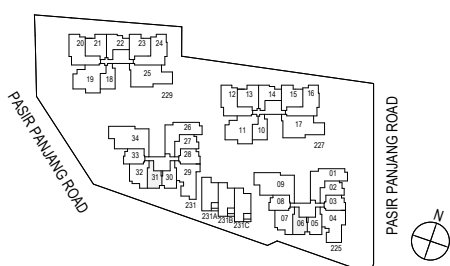
DRAFT

RC LEDGE AT 2ND AND 4TH STOREY ONLY (NOT ACCESSIBLE)

TYPE A1P
43sqm / 463sqft
#01-06, #01-31



OVERHEAD RC LEDGE

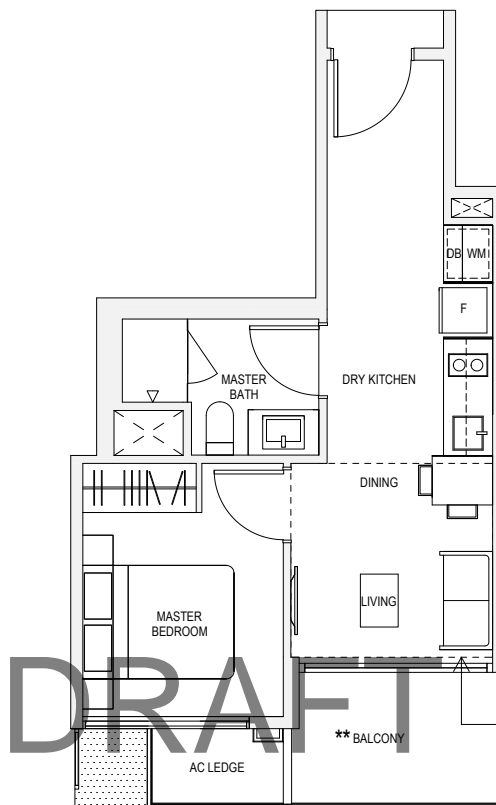


**The PES/balcony shall not be enclosed. Only approved PES/balcony screens are to be used.

The plans are subject to changes as may be approved by the relevant authorities. The plans are subject to changes without prior notice.

TYPE A2

43sqm / 463sqft
 #02-05, #03-05, #04-05,
 #02-30, #03-30, #04-30



TYPE A2H

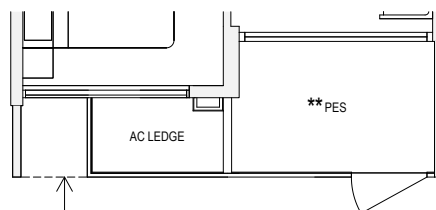
50sqm / 538sqft*
 #05-05, #05-30

* AREA OF 50sqm / 538sqft IS INCLUSIVE OF STRATA VOID AREA OF 7sqm / 75sqft ABOVE LIVING AND DINING AS PER DOTTED LINE

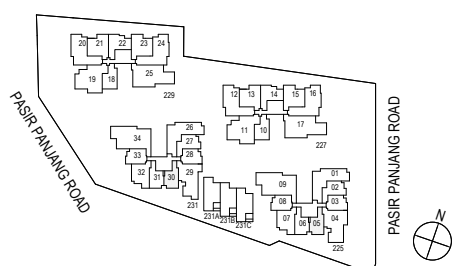
RC LEDGE AT 2ND AND 4TH STOREY ONLY (NOT ACCESSIBLE)

TYPE A2P

43sqm / 463sqft
 #01-05, #01-30



OVERHEAD RC LEDGE



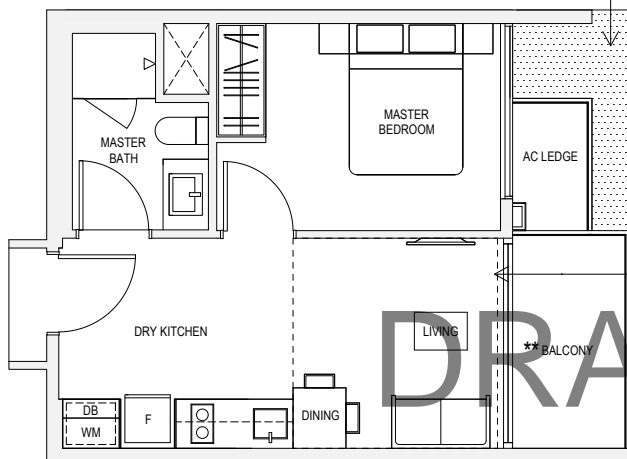
**The PES/balcony shall not be enclosed. Only approved PES/balcony screens are to be used.

The plans are subject to changes as may be approved by the relevant authorities. The plans are subject to changes without prior notice.

TYPE A3

43sqm / 463sqft
 #02-03, #03-03, #04-03,
 #02-28, #03-28, #04-28

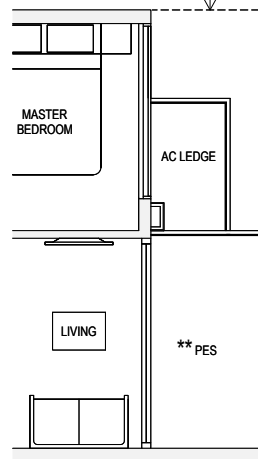
RC LEDGE AT 2ND AND 4TH
 STOREY ONLY (NOT ACCESSIBLE)



TYPE A3P

43sqm / 463sqft
 #01-03

OVERHEAD RC LEDGE

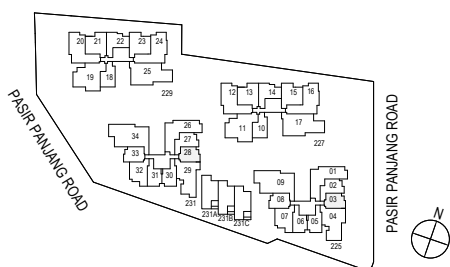


TYPE A3H

51sqm / 549sqft*
 #05-03, #05-28

* AREA OF 51sqm / 549sqft IS
 INCLUSIVE OF STRATA VOID AREA
 OF 8sqm / 86sqft ABOVE LIVING AND
 DINING AS PER DOTTED LINE

DRAFT



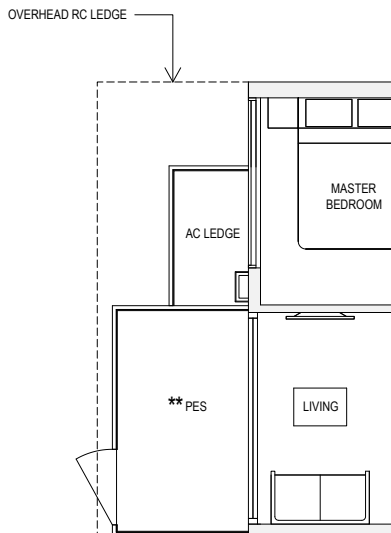
**The PES/balcony shall not be enclosed. Only approved PES/balcony screens are to be used.

The plans are subject to changes as may be approved by the relevant authorities. The plans are subject to changes without prior notice.

TYPE A4P

45sqm / 484sqft

#01-08, #01-33

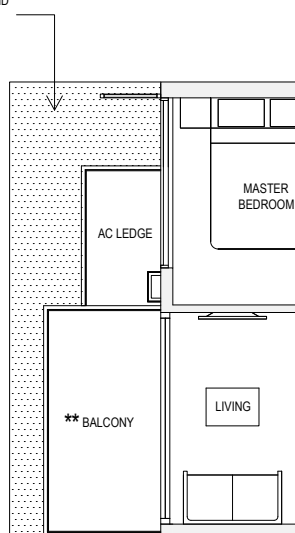


TYPE A4

44sqm / 474sqft

#02-08, #04-08,
#02-33, #04-33

RC LEDGE AT 2ND AND
4TH STOREY ONLY
(NOT ACCESSIBLE)



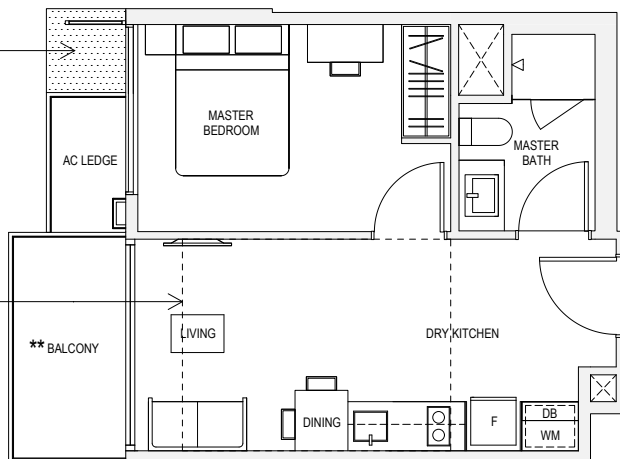
TYPE A4

44sqm / 474sqft

#03-08

#03-33, #05-33

RC LEDGE AT 3RD AND
5TH STOREY ONLY
(NOT ACCESSIBLE)

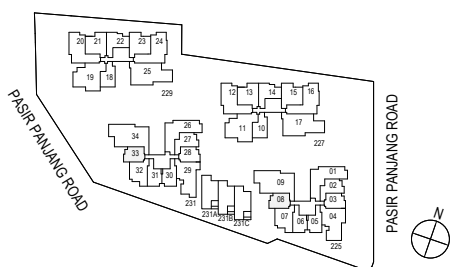
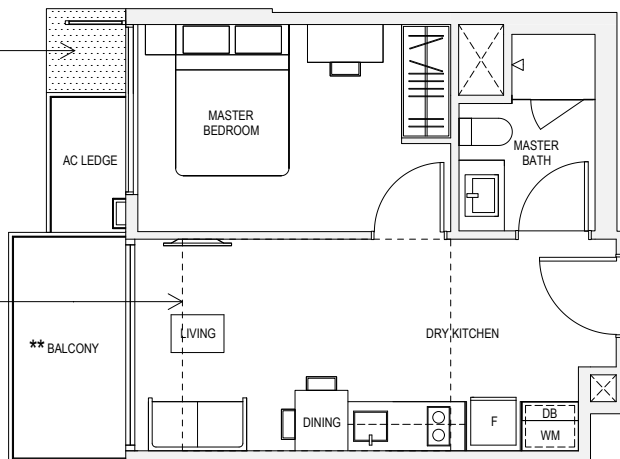


TYPE A4H

55sqm / 592sqft*

#05-08

* AREA OF 55sqm / 592sqft IS INCLUSIVE OF
STRATA VOID AREA OF 11sqm / 118sqft
ABOVE LIVING AND DINING AS PER
DOTTED LINE



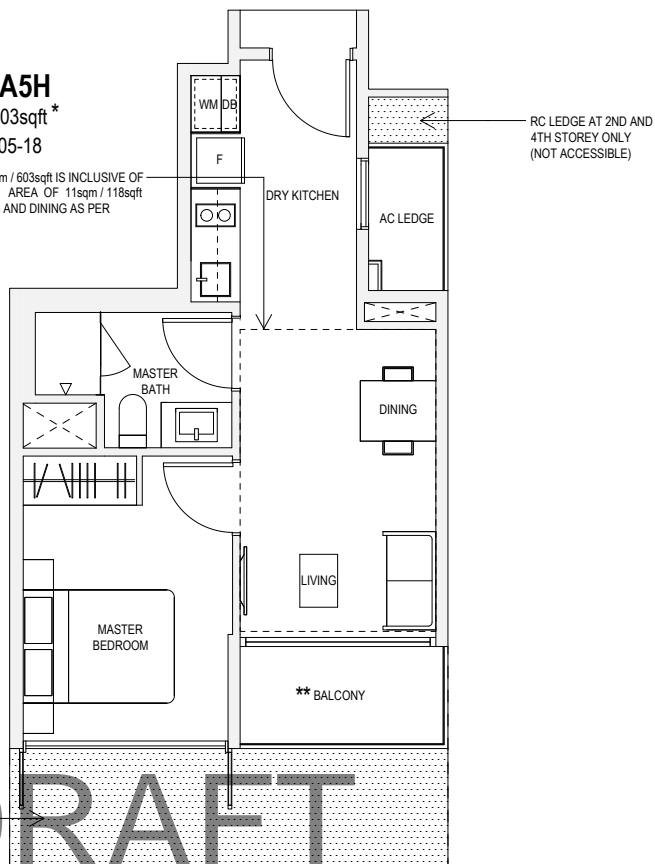
**The PES/balcony shall not be enclosed. Only approved PES/balcony screens are to be used.

The plans are subject to changes as may be approved by the relevant authorities. The plans are subject to changes without prior notice.

TYPE A5H

56sqm / 603sqft*
#05-10, #05-18

* AREA OF 56sqm / 603sqft IS INCLUSIVE OF STRATA VOID AREA OF 11sqm / 118sqft ABOVE LIVING AND DINING AS PER DOTTED LINE



TYPE A5

45sqm / 484sqft
#02-10, #03-10, #04-10,
#02-18, #03-18, #04-18

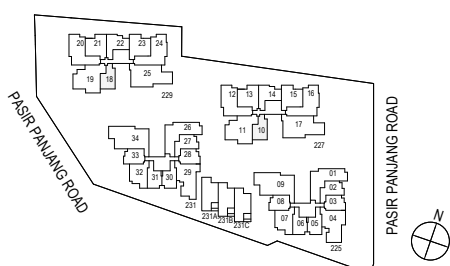
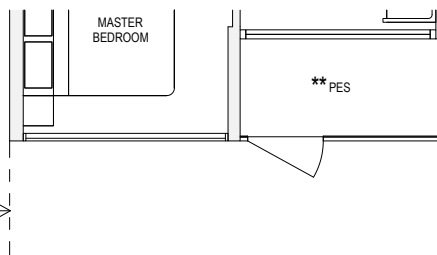
RC LEDGE AT 2ND AND 4TH STOREY ONLY (NOT ACCESSIBLE)

DRAFT

TYPE A5P

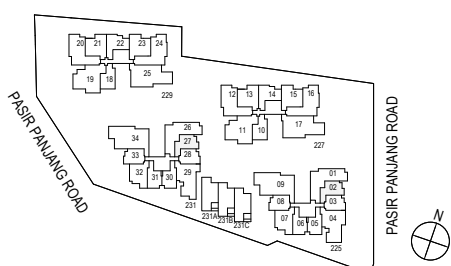
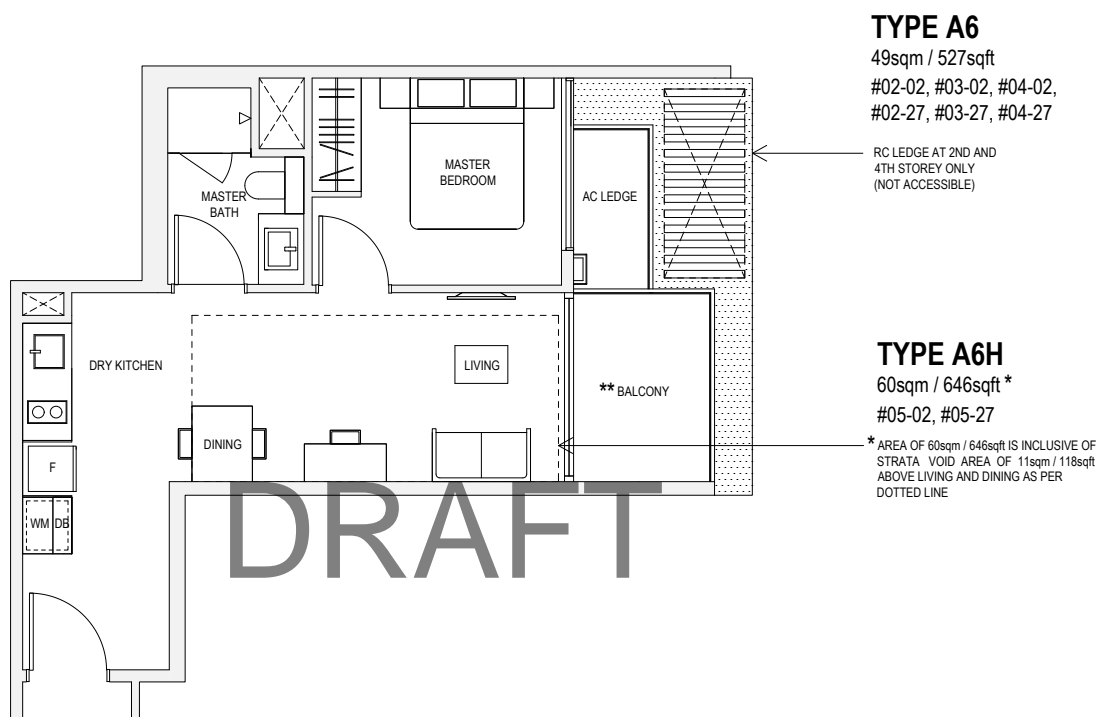
45sqm / 484sqft
#01-10 #01-18

OVERHEAD RC LEDGE



**The PES/balcony shall not be enclosed. Only approved PES/balcony screens are to be used.

The plans are subject to changes as may be approved by the relevant authorities. The plans are subject to changes without prior notice.



**The PES/balcony shall not be enclosed. Only approved PES/balcony screens are to be used.

The plans are subject to changes as may be approved by the relevant authorities. The plans are subject to changes without prior notice.

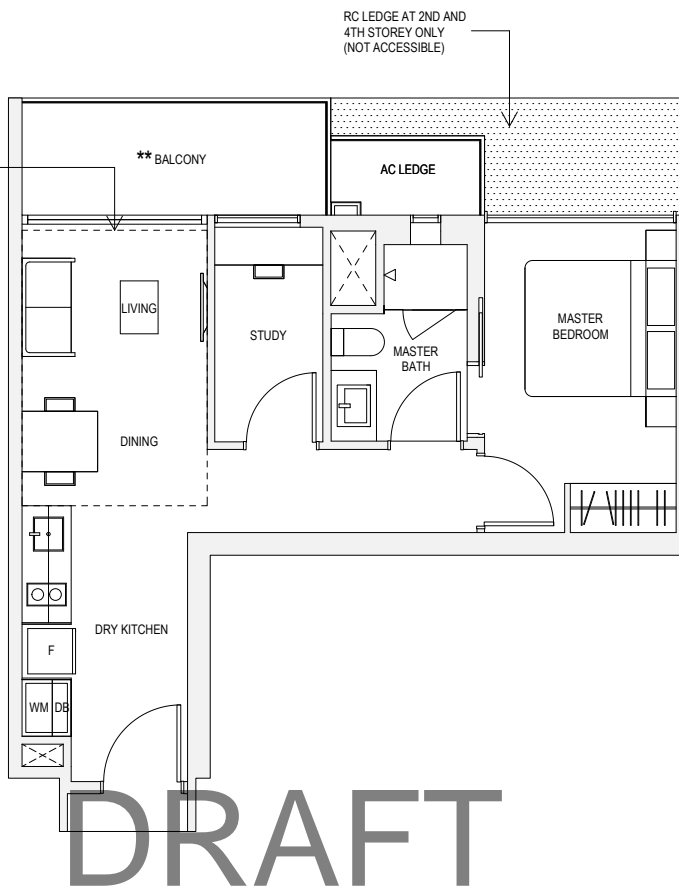
TYPE A7

56sqm / 603sqft
 #02-14, #03-14, #04-14,
 #02-22, #03-22, #04-22

TYPE A7H

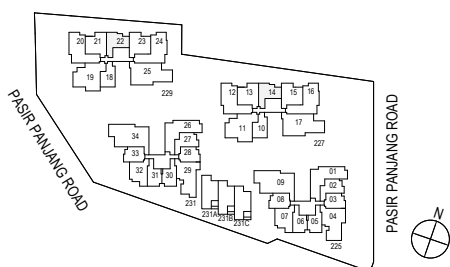
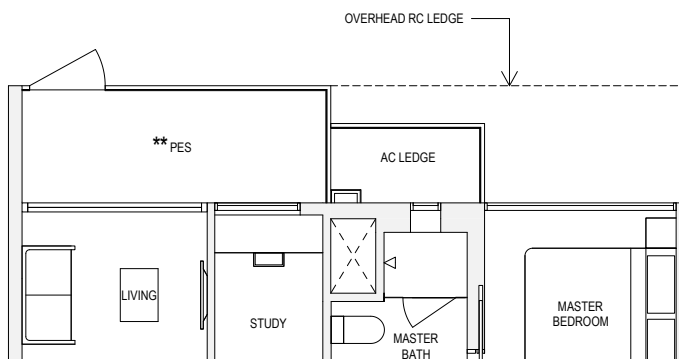
66sqm / 710sqft*
 #05-14, #05-22

* AREA OF 66sqm / 710sqft IS INCLUSIVE OF STRATA VOID AREA OF 10sqm / 108sqft ABOVE LIVING AND DINING AS PER DOTTED LINE



TYPE A7P

56sqm / 603sqft
 #01-14, #01-22

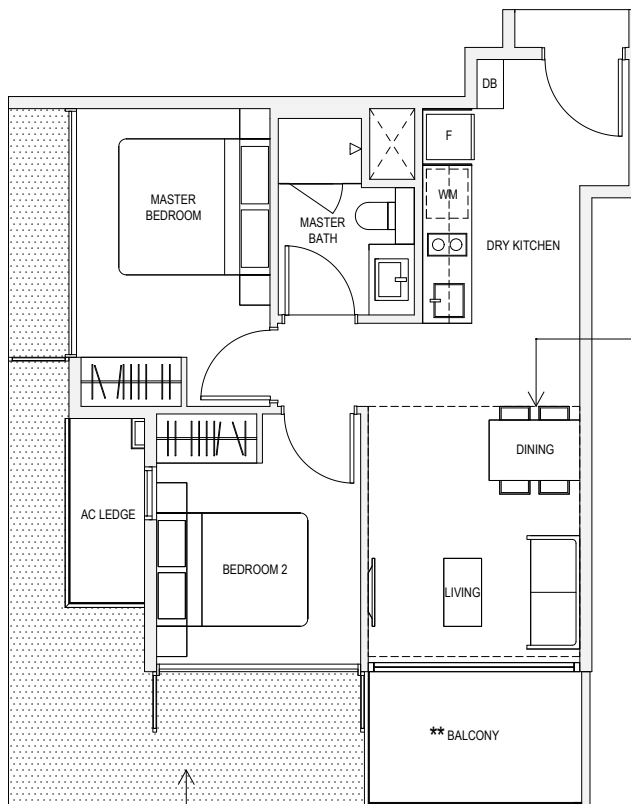


**The PES/balcony shall not be enclosed. Only approved PES/balcony screens are to be used.

The plans are subject to changes as may be approved by the relevant authorities. The plans are subject to changes without prior notice.

TYPE B1

60sqm / 646sqft
 #02-07, #03-07, #04-07,
 #02-32, #03-32, #04-32



TYPE B1H

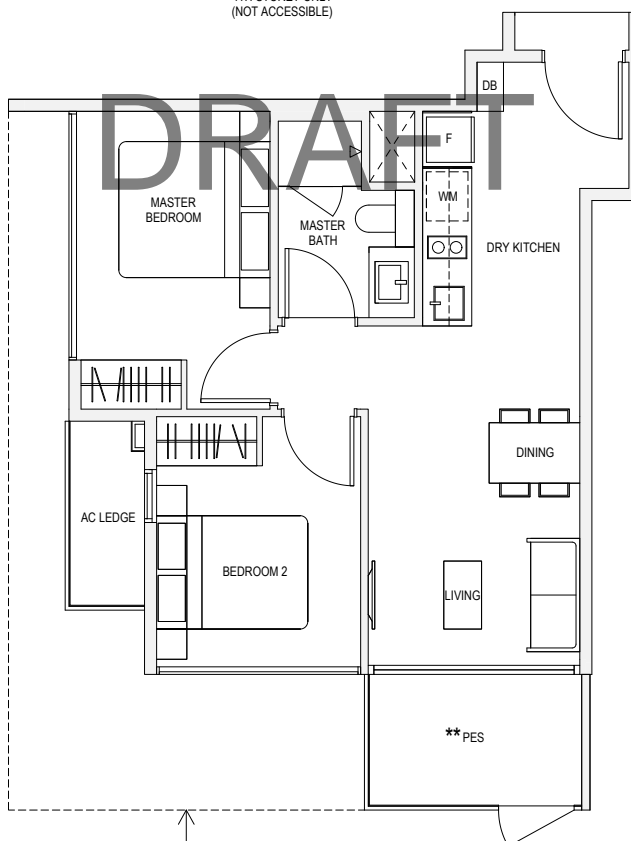
70sqm / 753sqft*
 #05-07, #05-32

* AREA OF 70sqm / 753sqft IS INCLUSIVE OF STRATA VOID AREA OF 10sqm / 108sqft ABOVE LIVING AND DINING AS PER DOTTED LINE

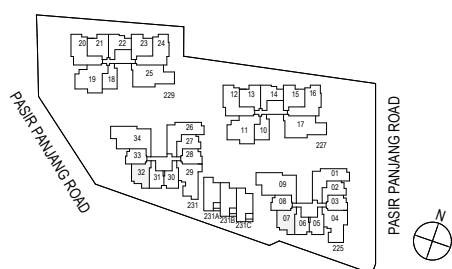
RC LEDGE AT 2ND AND 4TH STOREY ONLY (NOT ACCESSIBLE)

TYPE B1P

60sqm / 646sqft
 #01-07, #01-32



OVERHEAD RC LEDGE

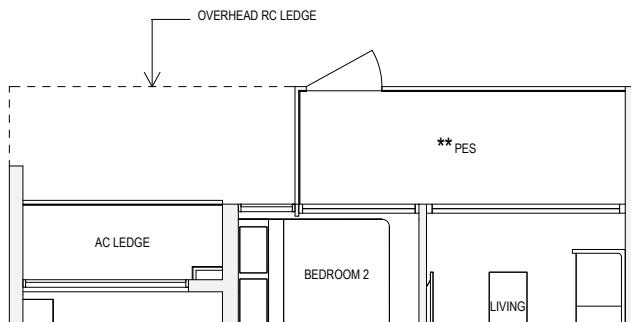


**The PES/balcony shall not be enclosed. Only approved PES/balcony screens are to be used.

The plans are subject to changes as may be approved by the relevant authorities. The plans are subject to changes without prior notice.

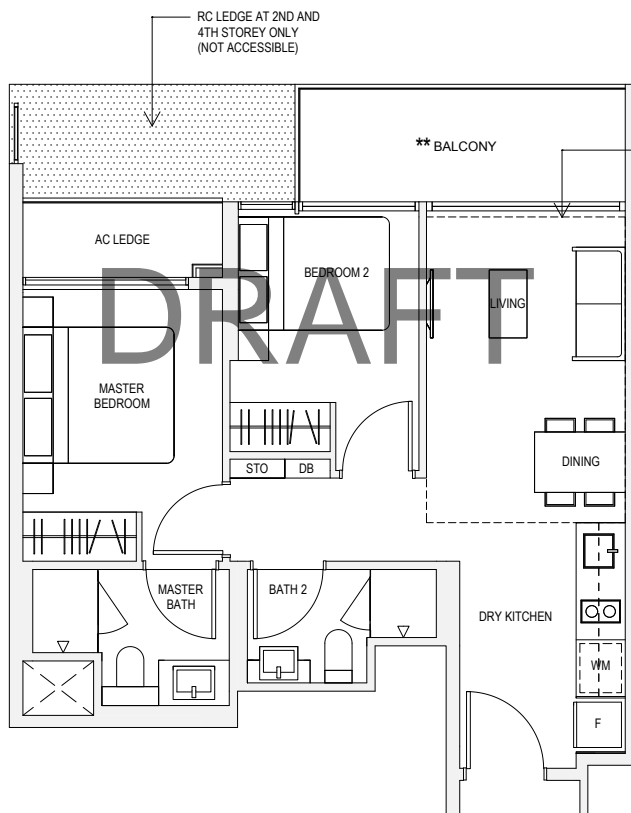
TYPE B2P

64sqm / 689sqft
#01-13, #01-21



TYPE B2

64sqm / 689sqft
#02-13, #03-13, #04-13,
#02-21, #03-21, #04-21

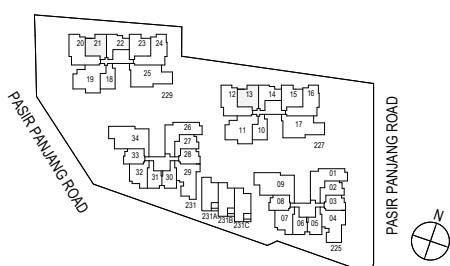


TYPE B2H

75sqm / 807sqft*
#05-13, #05-21

* AREA OF 75sqm / 807sqft IS INCLUSIVE OF STRATA VOID AREA OF 11sqm / 118sqft ABOVE LIVING AND DINING AS PER DOTTED LINE

DRAFT

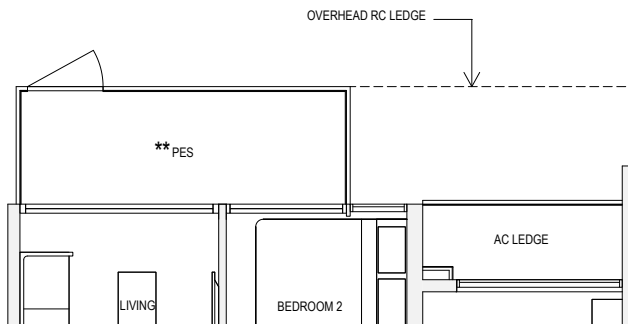


**The PES/balcony shall not be enclosed. Only approved PES/balcony screens are to be used.

The plans are subject to changes as may be approved by the relevant authorities. The plans are subject to changes without prior notice.

TYPE B3P

65sqm / 700sqft
#01-15, #01-23



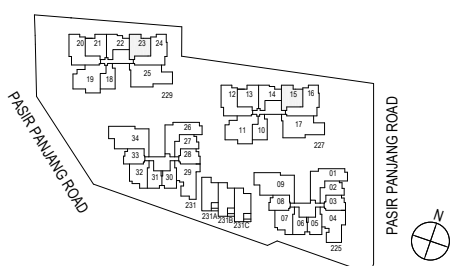
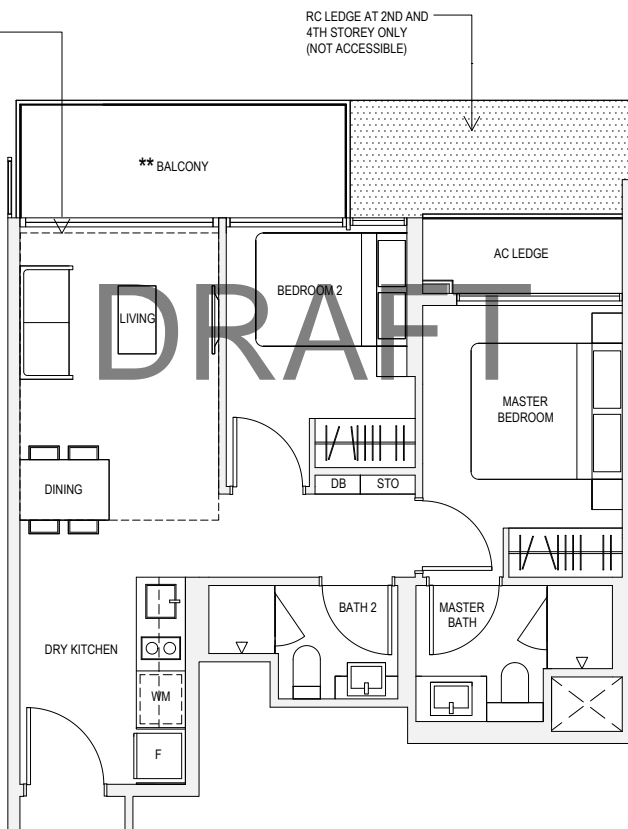
TYPE B3

65sqm / 700sqft
#02-15, #03-15, #04-15,
#02-23, #03-23, #04-23

TYPE B3H

76sqm / 818sqft *
#05-15, #05-23

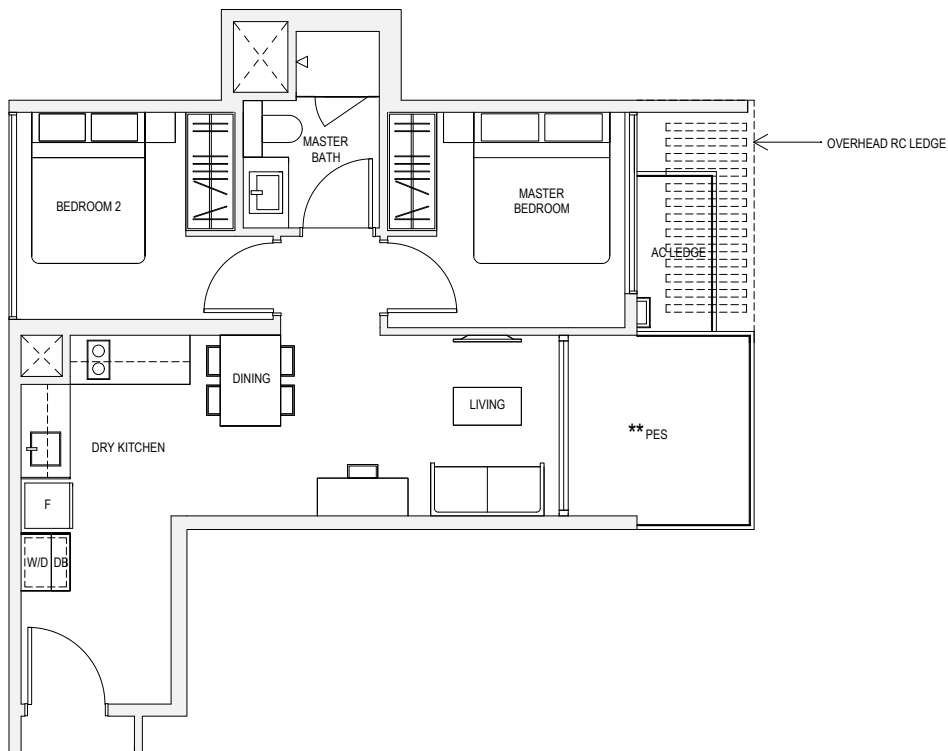
* AREA OF 76sqm / 818sqft IS INCLUSIVE OF STRATA VOID AREA OF 11sqm / 118sqft ABOVE LIVING AND DINING AS PER DOTTED LINE



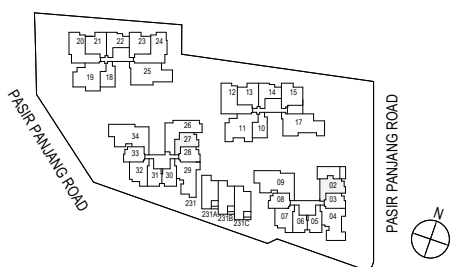
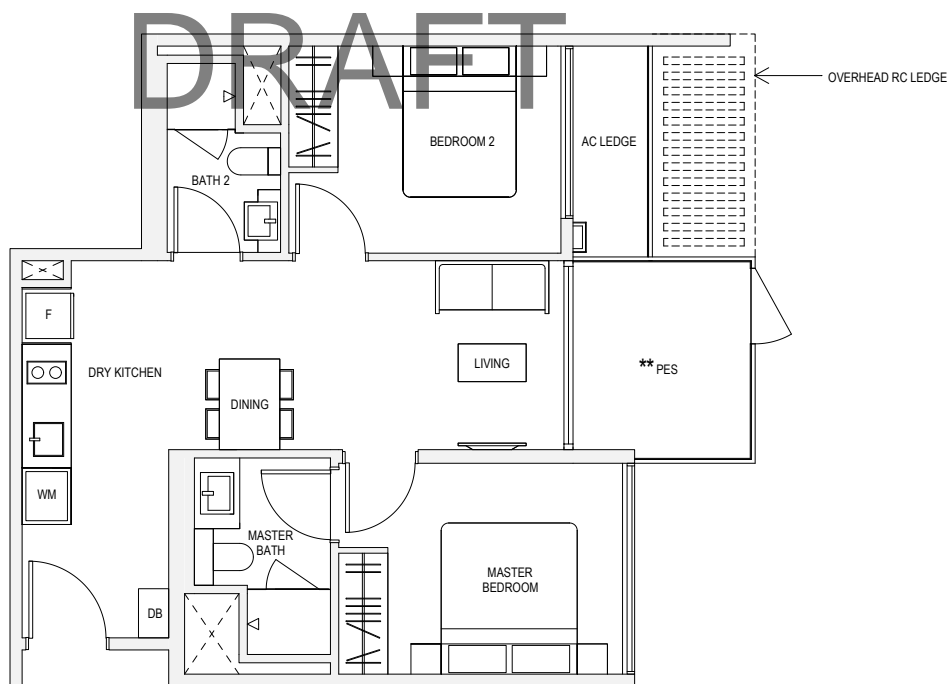
**The PES/balcony shall not be enclosed. Only approved PES/balcony screens are to be used.

The plans are subject to changes as may be approved by the relevant authorities. The plans are subject to changes without prior notice.

TYPE B4P
61sqm / 657sqft
#01-02



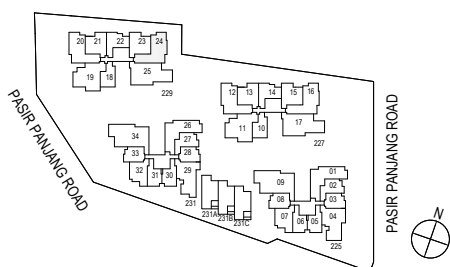
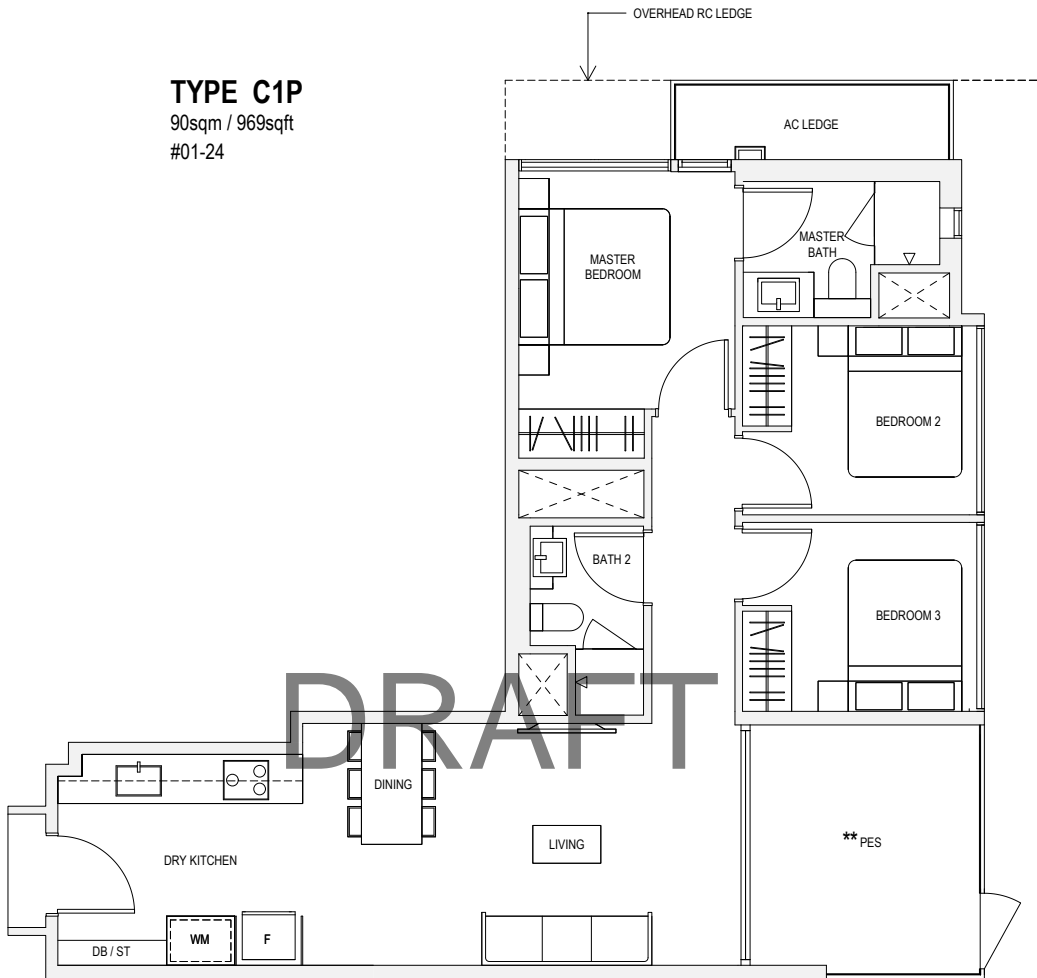
TYPE B5P
69sqm / 743sqft
#01-27



**The PES/balcony shall not be enclosed. Only approved PES/balcony screens are to be used.

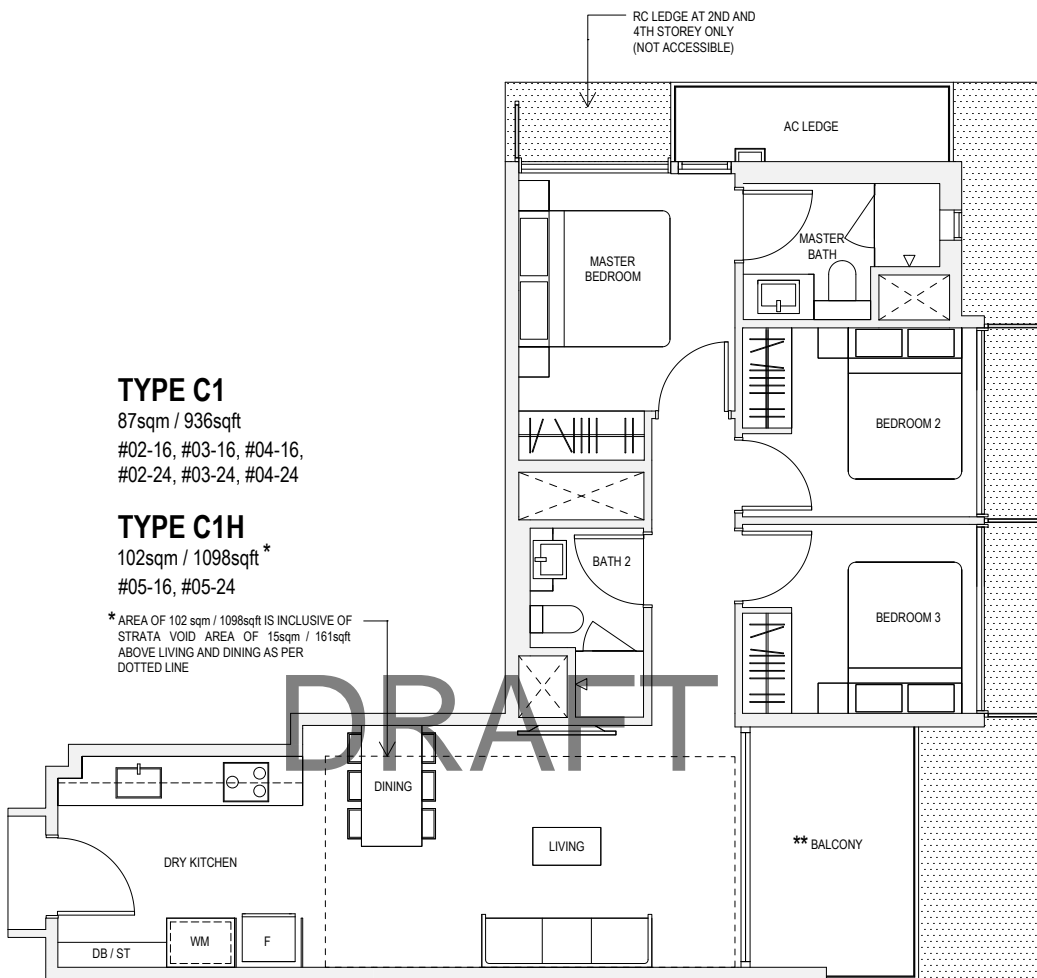
The plans are subject to changes as may be approved by the relevant authorities. The plans are subject to changes without prior notice.

TYPE C1P
90sqm / 969sqft
#01-24



**The PES/balcony shall not be enclosed. Only approved PES/balcony screens are to be used.

The plans are subject to changes as may be approved by the relevant authorities. The plans are subject to changes without prior notice.



TYPE C1

87sqm / 936sqft

#02-16, #03-16, #04-16,
#02-24, #03-24, #04-24

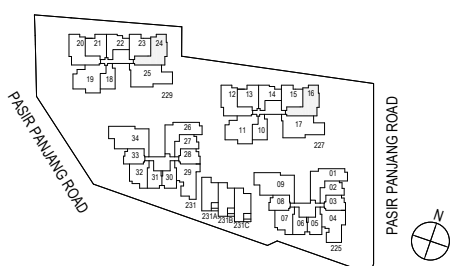
TYPE C1H

102sqm / 1098sqft *

#05-16, #05-24

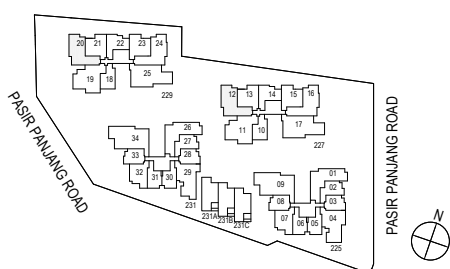
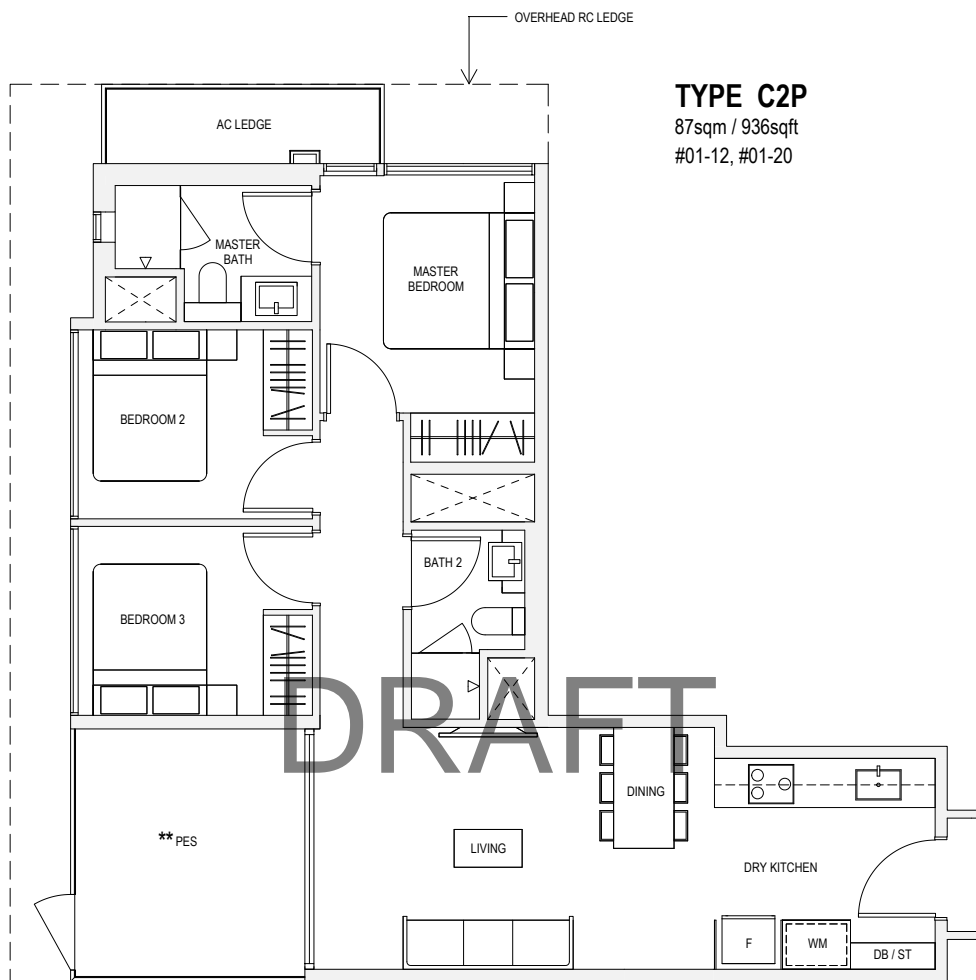
* AREA OF 102 sqm / 1098sqft IS INCLUSIVE OF STRATA VOID AREA OF 15sqm / 161sqft ABOVE LIVING AND DINING AS PER DOTTED LINE

DRAFT



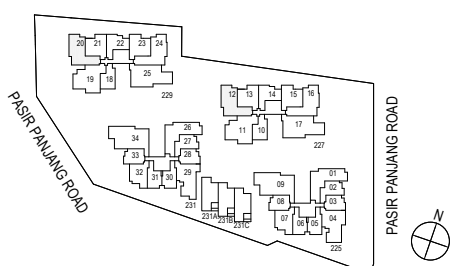
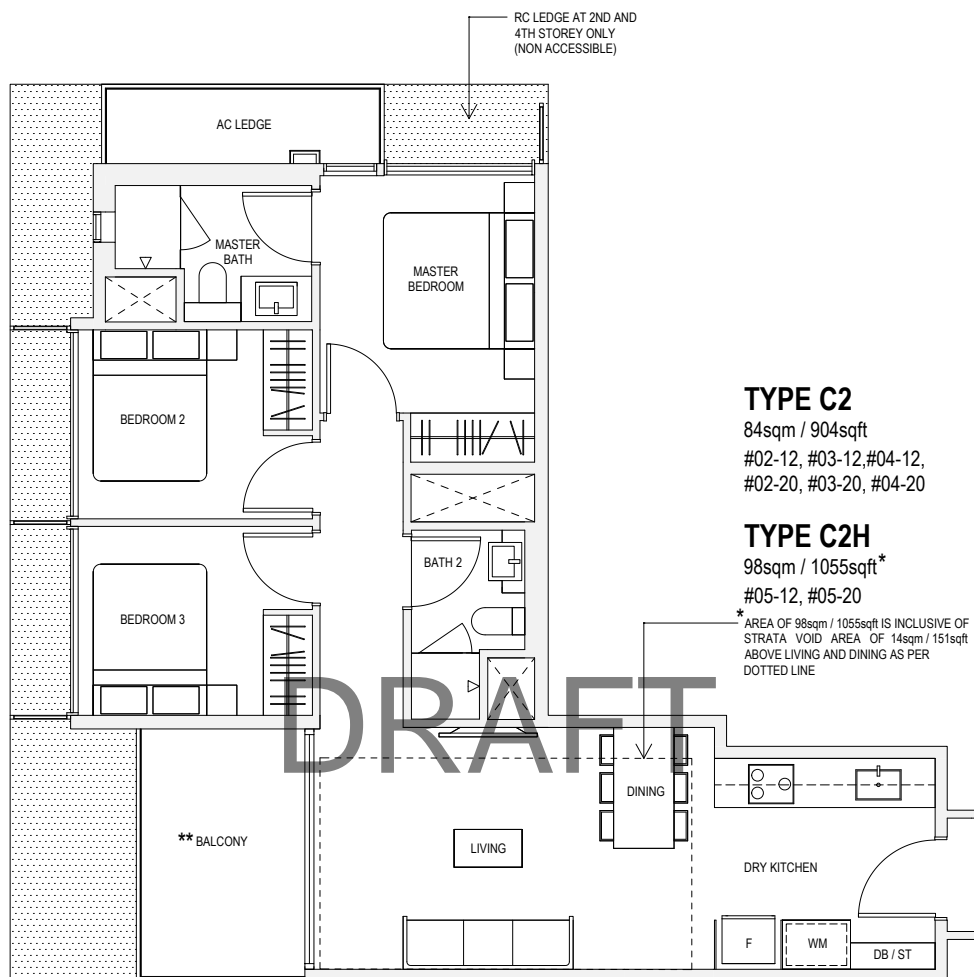
**The PES/balcony shall not be enclosed. Only approved PES/balcony screens are to be used.

The plans are subject to changes as may be approved by the relevant authorities. The plans are subject to changes without prior notice.



**The PES/balcony shall not be enclosed. Only approved PES/balcony screens are to be used.

The plans are subject to changes as may be approved by the relevant authorities. The plans are subject to changes without prior notice.



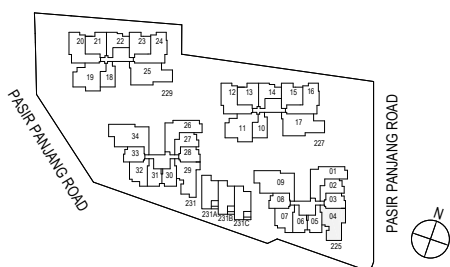
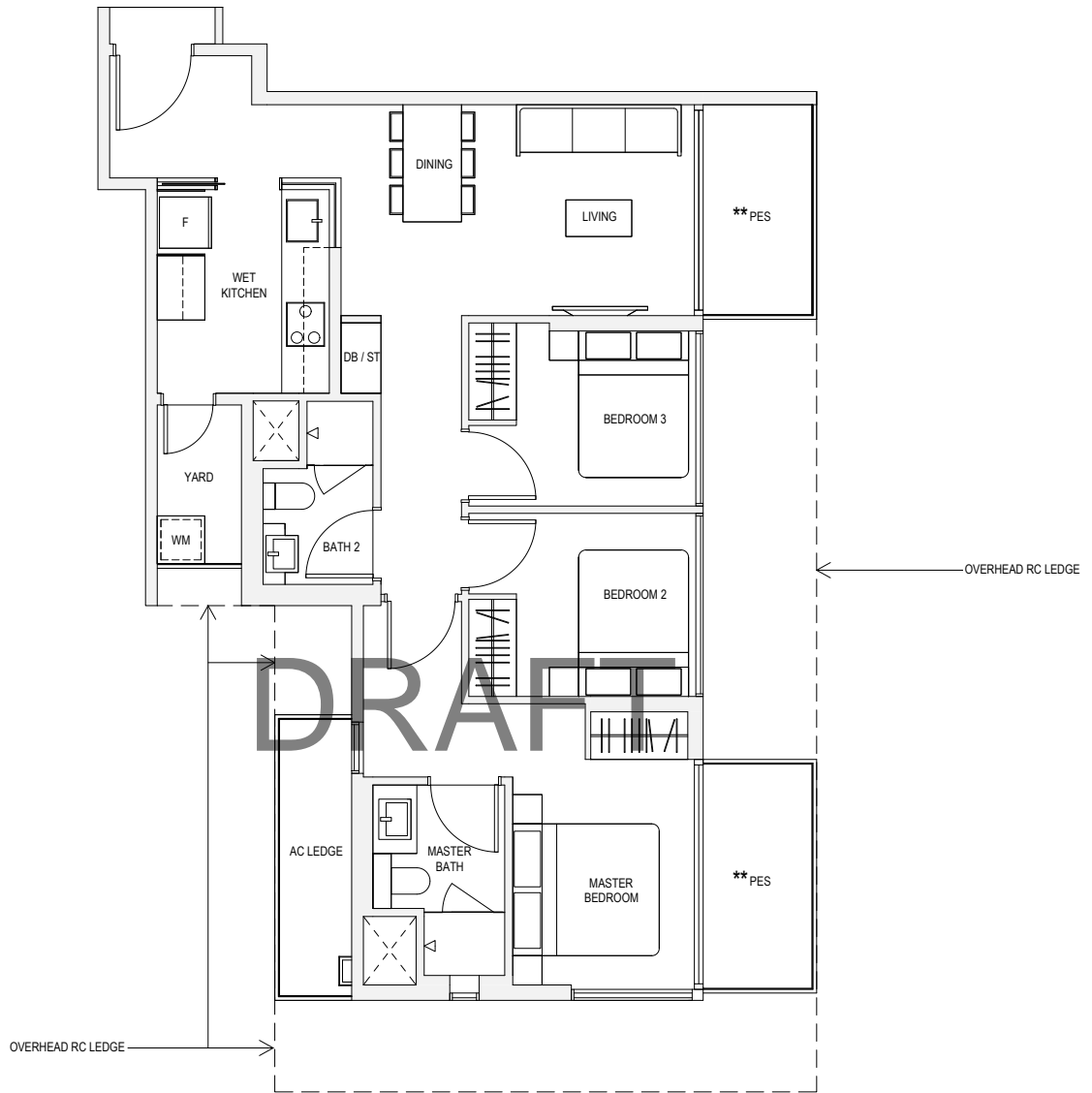
**The PES/balcony shall not be enclosed. Only approved PES/balcony screens are to be used.

The plans are subject to changes as may be approved by the relevant authorities. The plans are subject to changes without prior notice.

TYPE C3P

93sqm / 1001sqft

#01-04



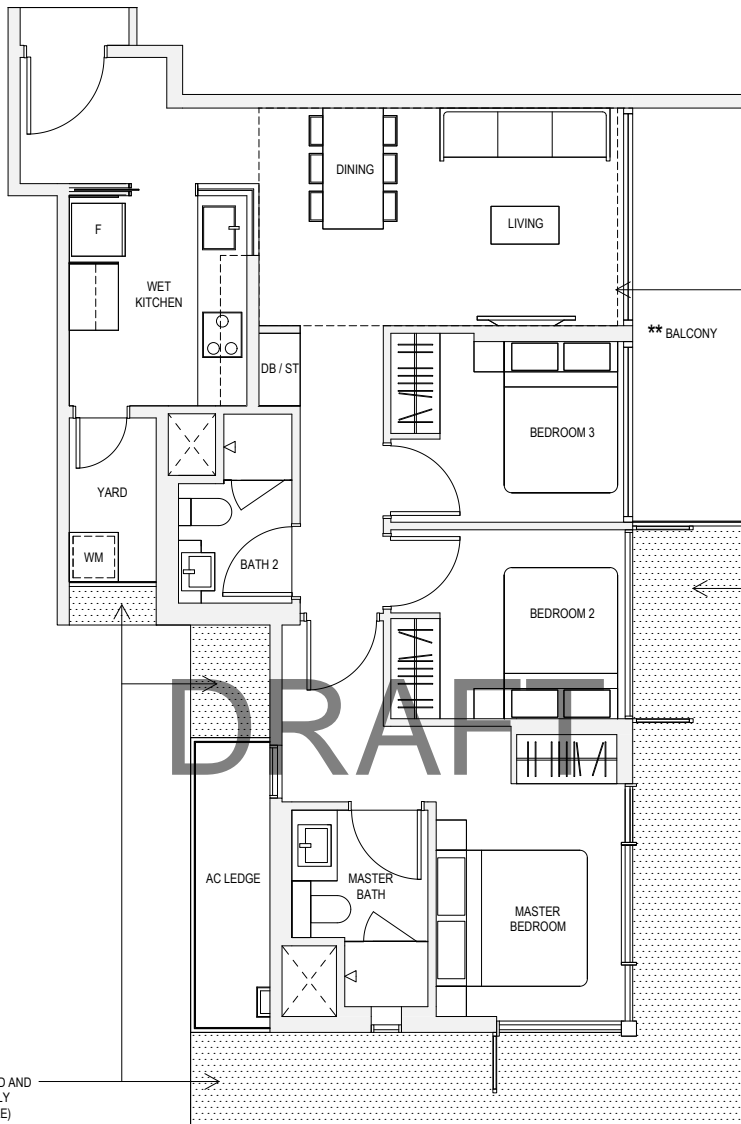
**The PES/balcony shall not be enclosed. Only approved PES/balcony screens are to be used.

The plans are subject to changes as may be approved by the relevant authorities. The plans are subject to changes without prior notice.

TYPE C3

93sqm / 1001sqft

#02-04, #03-04, #04-04



TYPE C3H

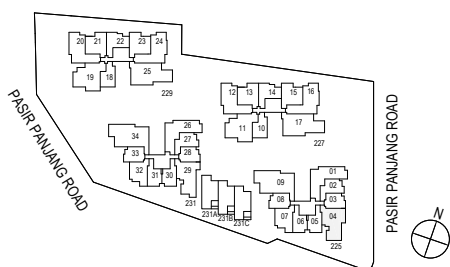
107sqm / 1152sqft*

#05-04

* AREA OF 107sqm / 1152sqft IS INCLUSIVE OF STRATA VOID AREA OF 14sqm / 151sqft ABOVE LIVING AND DINING AS PER DOTTED LINE

RC LEDGE AT 2ND AND 4TH STOREY ONLY (NON ACCESSIBLE)

RC LEDGE AT 2ND AND 4TH STOREY ONLY (NON ACCESSIBLE)



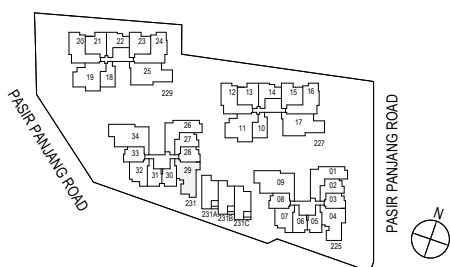
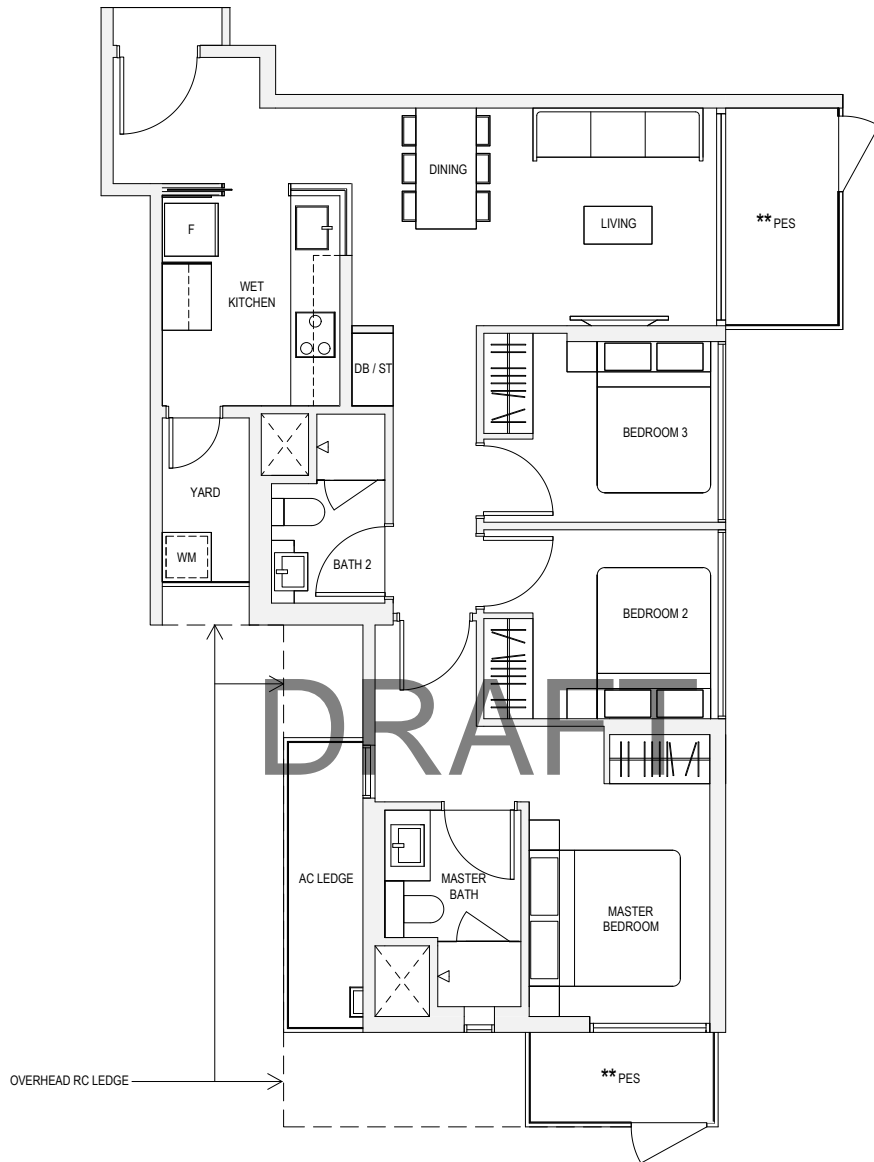
**The PES/balcony shall not be enclosed. Only approved PES/balcony screens are to be used.

The plans are subject to changes as may be approved by the relevant authorities. The plans are subject to changes without prior notice.

TYPE C3aP

92sqm / 990sqft

#01-29



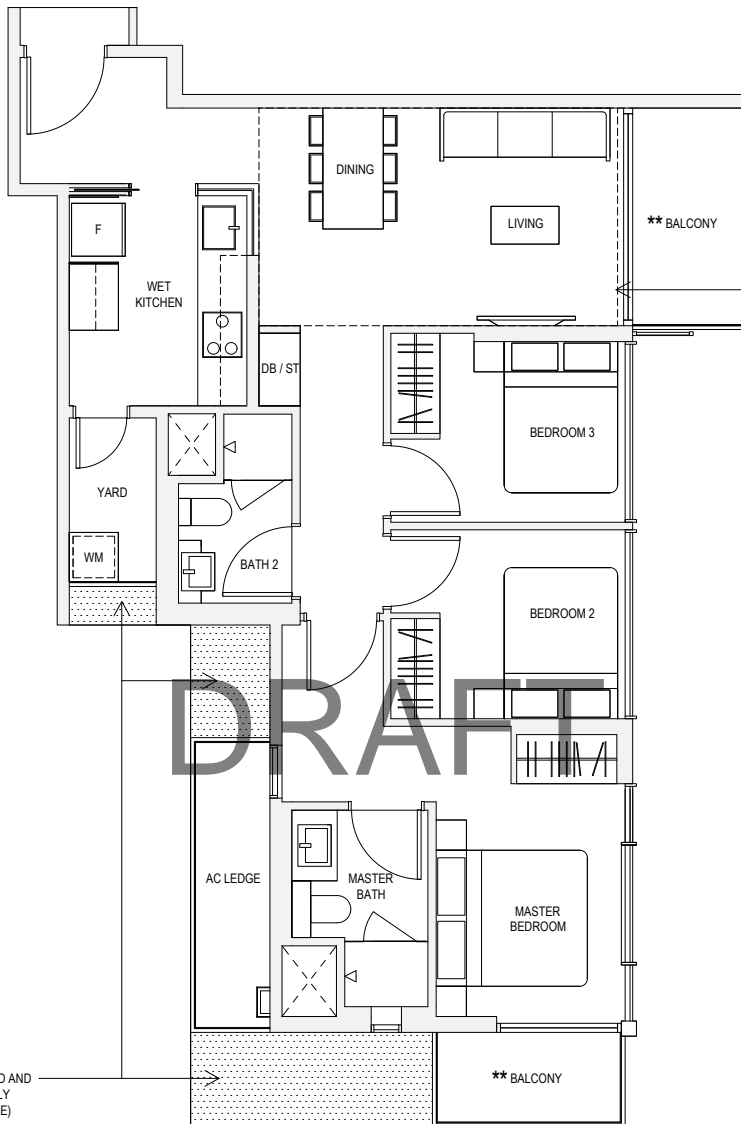
**The PES/balcony shall not be enclosed. Only approved PES/balcony screens are to be used.

The plans are subject to changes as may be approved by the relevant authorities. The plans are subject to changes without prior notice.

TYPE C3a

92sqm / 990sqft

#02-29, #03-29, #04-29



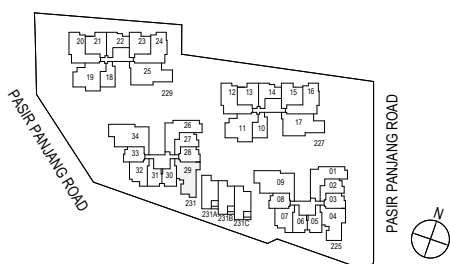
TYPE C3aH

107sqm / 1152sqft*

#05-29

* AREA OF 107sqm / 1152sqft IS INCLUSIVE OF STRATA VOID AREA OF 14sqm / 151sqft ABOVE LIVING AND DINING AS PER DOTTED LINE

DRAFT



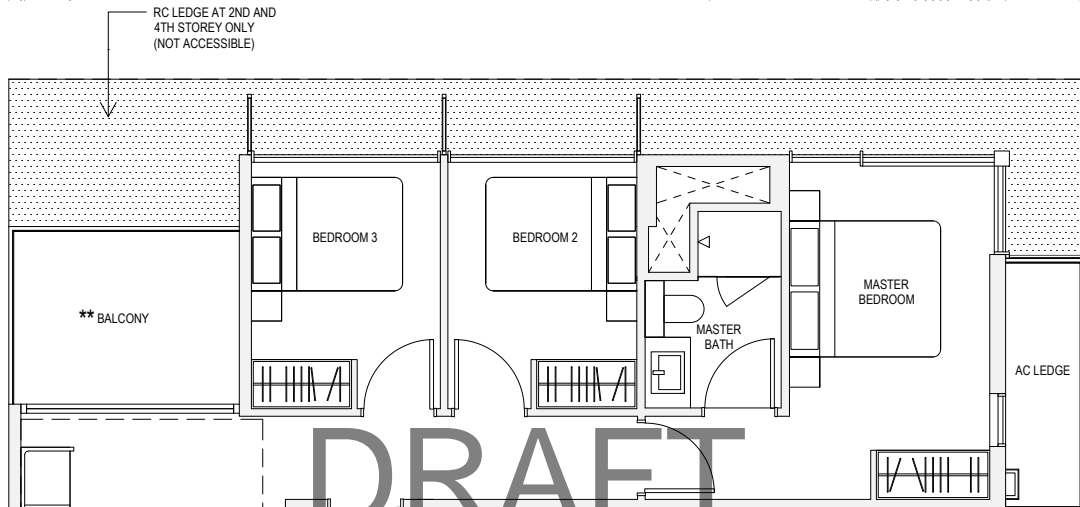
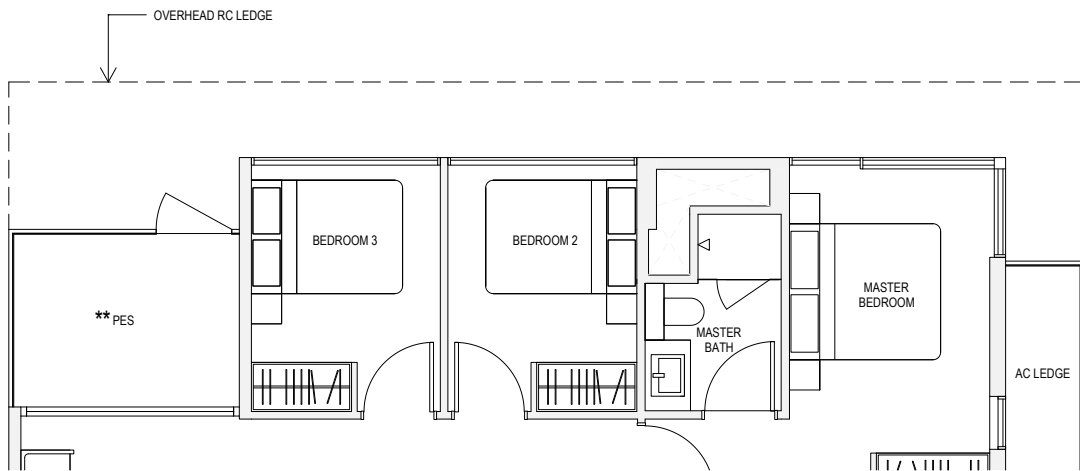
**The PES/balcony shall not be enclosed. Only approved PES/balcony screens are to be used.

The plans are subject to changes as may be approved by the relevant authorities. The plans are subject to changes without prior notice.

TYPE C4P

96sqm / 1033sqft

#01-26



DRAFT

TYPE C4

96sqm / 1033sqft

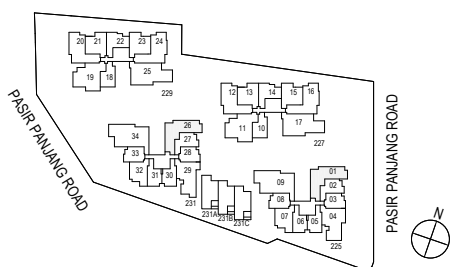
#02-01, #03-01, #04-01,
#02-26, #03-26, #04-26

* AREA OF 111sqm / 1195sqft IS INCLUSIVE OF STRATA VOID AREA OF 15sqm / 161sqft ABOVE LIVING AND DINING AS PER DOTTED LINE

TYPE C4H

111sqm / 1195sqft*

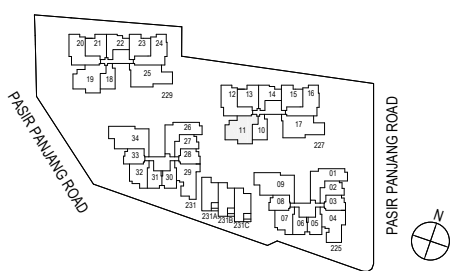
#05-01, #05-26



**The PES/balcony shall not be enclosed. Only approved PES/balcony screens are to be used.

The plans are subject to changes as may be approved by the relevant authorities. The plans are subject to changes without prior notice.

TYPE C5P
101sqm / 1087sqft
#01-11



**The PES/balcony shall not be enclosed. Only approved PES/balcony screens are to be used.
The plans are subject to changes as may be approved by the relevant authorities. The plans are subject to changes without prior notice.

TYPE C5

101sqm / 1087sqft

#02-11, #03-11, #04-11



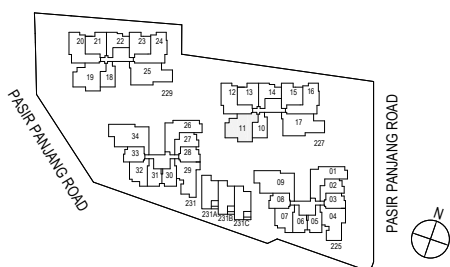
RC LEDGE AT 2ND AND 4TH STOREY ONLY (NOT ACCESSIBLE)

* AREA OF 120sqm / 1292sqft IS INCLUSIVE OF STRATA VOID AREA OF 19sqm / 205sqft ABOVE LIVING AND DINING AS PER DOTTED LINE

TYPE C5H

120sqm / 1292sqft*

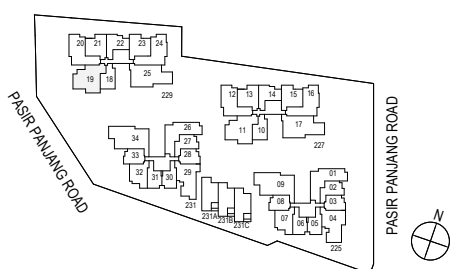
#05-11



**The PES/balcony shall not be enclosed. Only approved PES/balcony screens are to be used.

The plans are subject to changes as may be approved by the relevant authorities. The plans are subject to changes without prior notice.

TYPE C5aP
101sqm / 1087sqft
#01-19



**The PES/balcony shall not be enclosed. Only approved PES/balcony screens are to be used.

The plans are subject to changes as may be approved by the relevant authorities. The plans are subject to changes without prior notice.

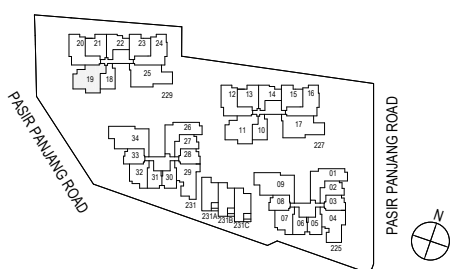
TYPE C5a
101sqm / 1087sqft
#02-19, #03-19, #04-19



RC LEDGE AT 2ND AND 4TH STOREY ONLY (NOT ACCESSIBLE)

* AREA OF 120sqm / 1292sqft IS INCLUSIVE OF STRATA VOID AREA OF 19sqm / 205sqft ABOVE LIVING AND DINING AS PER DOTTED LINE

TYPE C5aH
120sqm / 1292sqft *
#05-19



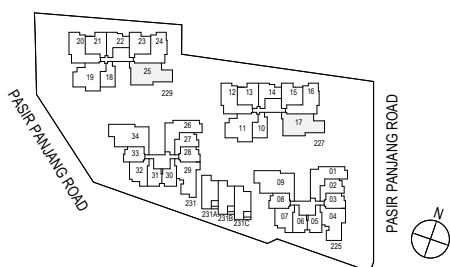
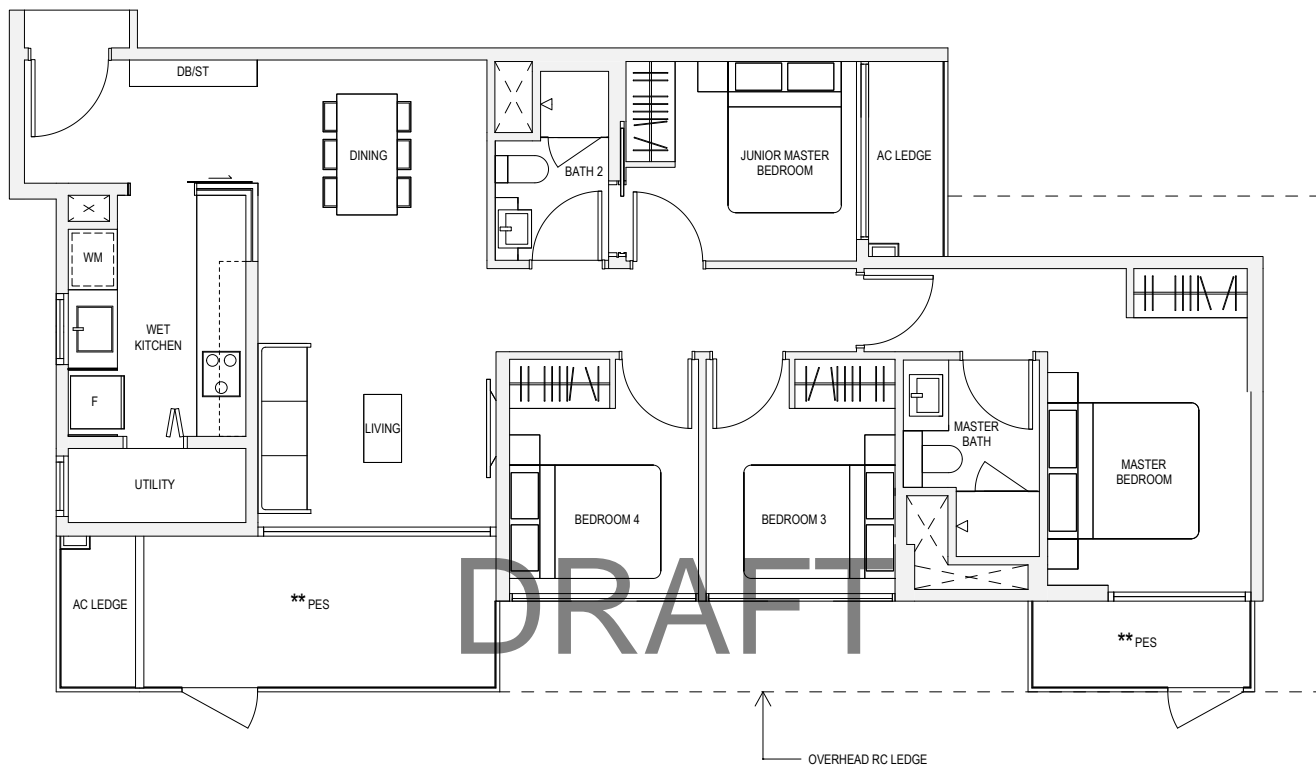
**The PES/balcony shall not be enclosed. Only approved PES/balcony screens are to be used.

The plans are subject to changes as may be approved by the relevant authorities. The plans are subject to changes without prior notice.

TYPE D1P

116sqm / 1249sqft

#01-17, #01-25



**The PES/balcony shall not be enclosed. Only approved PES/balcony screens are to be used.

The plans are subject to changes as may be approved by the relevant authorities. The plans are subject to changes without prior notice.

TYPE D1

116sqm / 1249sqft

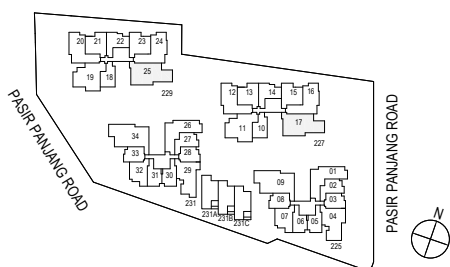
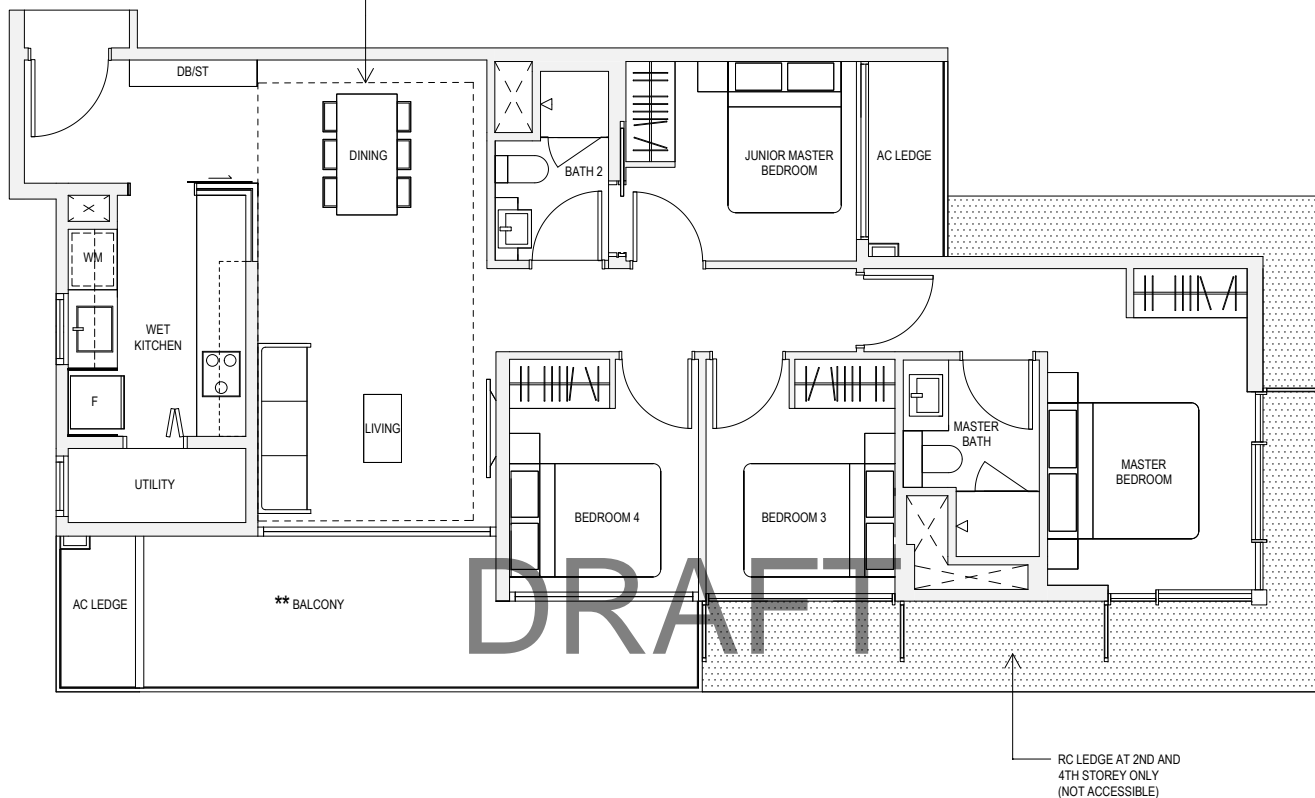
#02-17, #03-17, #04-17,
#02-25, #03-25, #04-25

TYPE D1H

134sqm / 1442sqft*

#05-17, #05-25

* AREA OF 134sqm / 1442sqft IS INCLUSIVE OF STRATA VOID AREA OF 18sqm / 194sqft ABOVE LIVING AND DINING AS PER DOTTED LINE



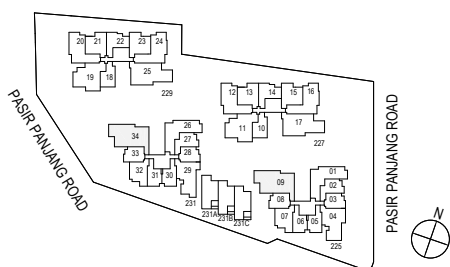
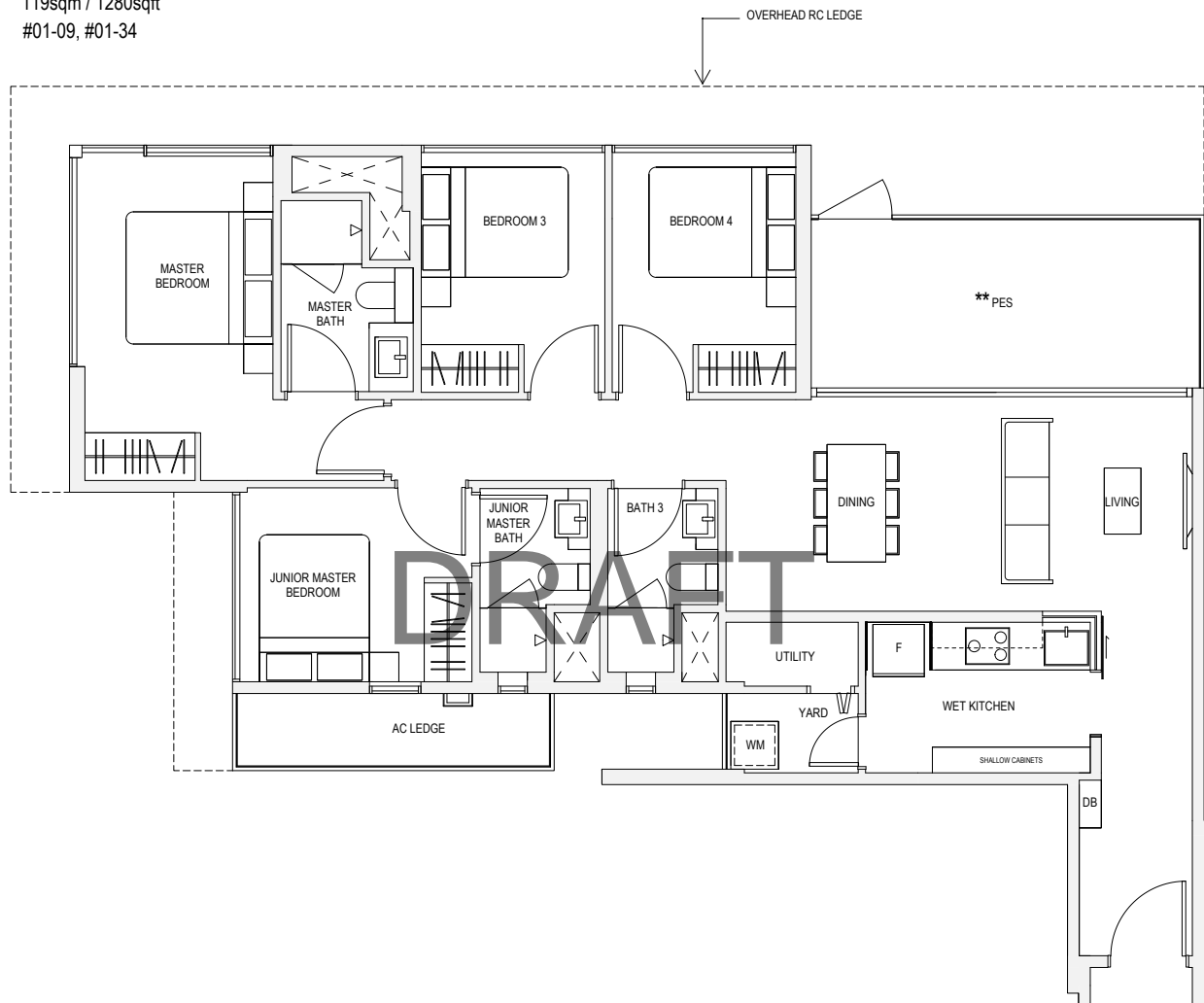
**The PES/balcony shall not be enclosed. Only approved PES/balcony screens are to be used.

The plans are subject to changes as may be approved by the relevant authorities. The plans are subject to changes without prior notice.

TYPE D2P

119sqm / 1280sqft

#01-09, #01-34



**The PES/balcony shall not be enclosed. Only approved PES/balcony screens are to be used.

The plans are subject to changes as may be approved by the relevant authorities. The plans are subject to changes without prior notice.

TYPE D2

120sqm / 1292sqft

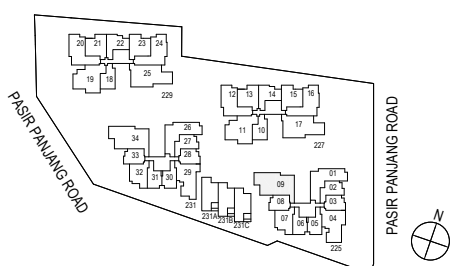
#02-09, #03-09, #04-09,

TYPE D2H

138sqm / 1485sqft *

#05-09

* AREA OF 138sqm / 1485sqft IS INCLUSIVE OF STRATA VOID AREA OF 18sqm / 194sqft ABOVE LIVING AND DINING AS PER DOTTED LINE



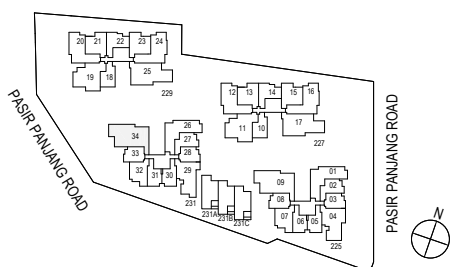
**The PES/balcony shall not be enclosed. Only approved PES/balcony screens are to be used.

The plans are subject to changes as may be approved by the relevant authorities. The plans are subject to changes without prior notice.

TYPE D2a

120sqm / 1292sqft

#02-34, #03-34, #04-34, #05-34

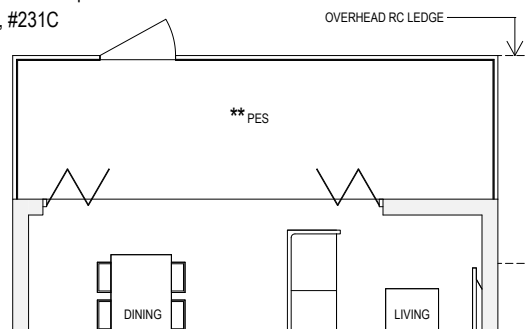


**The PES/balcony shall not be enclosed. Only approved PES/balcony screens are to be used.

The plans are subject to changes as may be approved by the relevant authorities. The plans are subject to changes without prior notice.

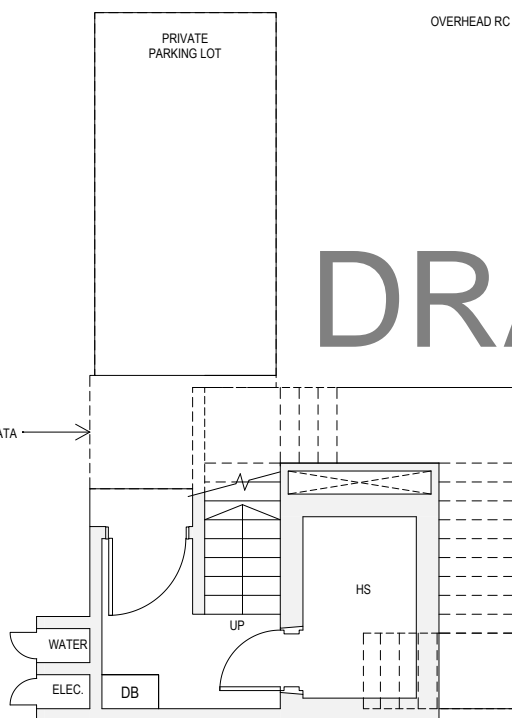
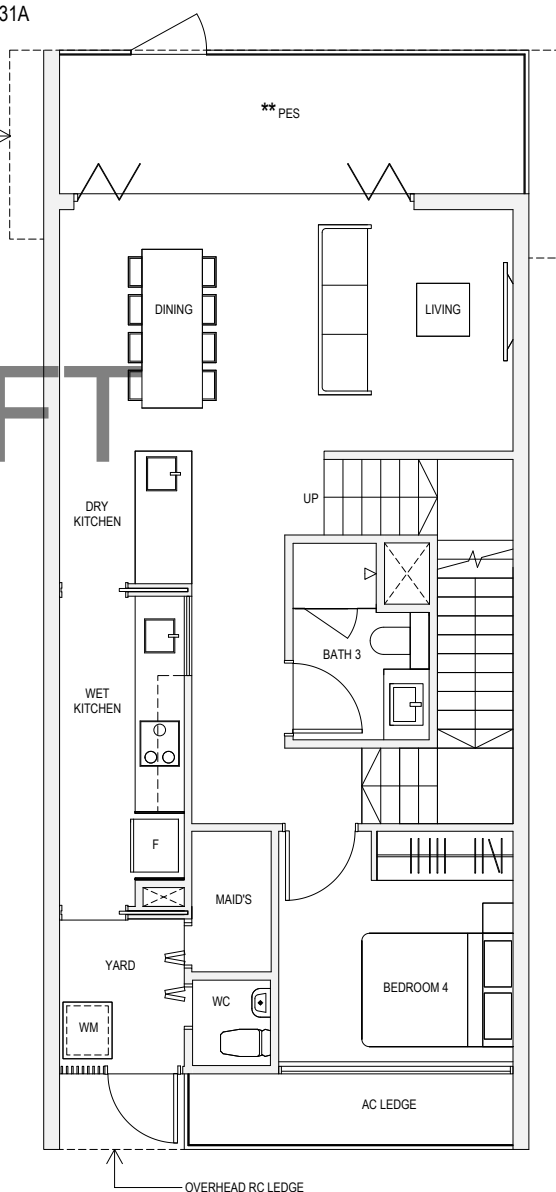
STRATA LANDED HOUSE

202sqm / 2174sqft
#231B, #231C



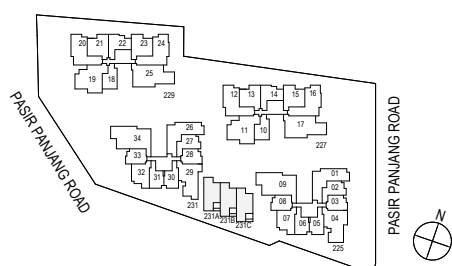
STRATA LANDED HOUSE

202sqm / 2174sqft
#231A



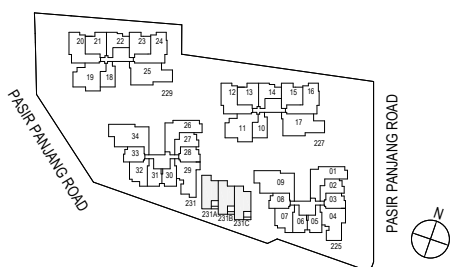
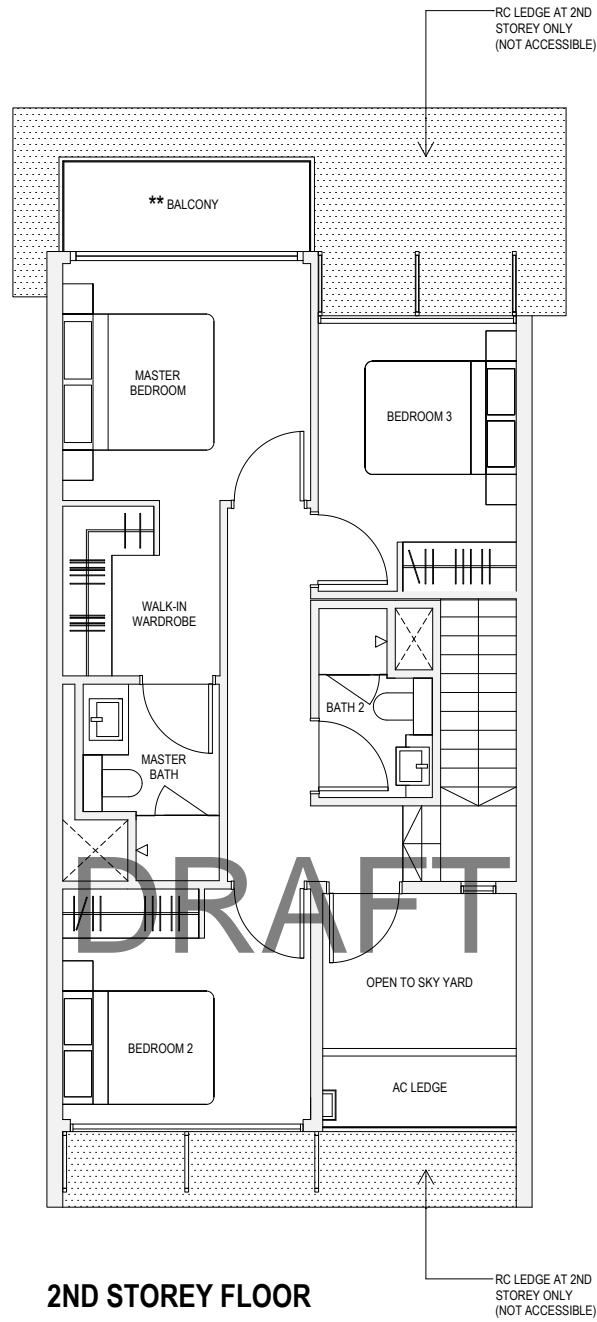
BASEMENT FLOOR

1ST STOREY FLOOR



**The PES/balcony shall not be enclosed. Only approved PES/balcony screens are to be used.

The plans are subject to changes as may be approved by the relevant authorities. The plans are subject to changes without prior notice.



**The PES/balcony shall not be enclosed. Only approved PES/balcony screens are to be used.

The plans are subject to changes as may be approved by the relevant authorities. The plans are subject to changes without prior notice.