

# 1 - BEDROOM

## TYPE A1(p)

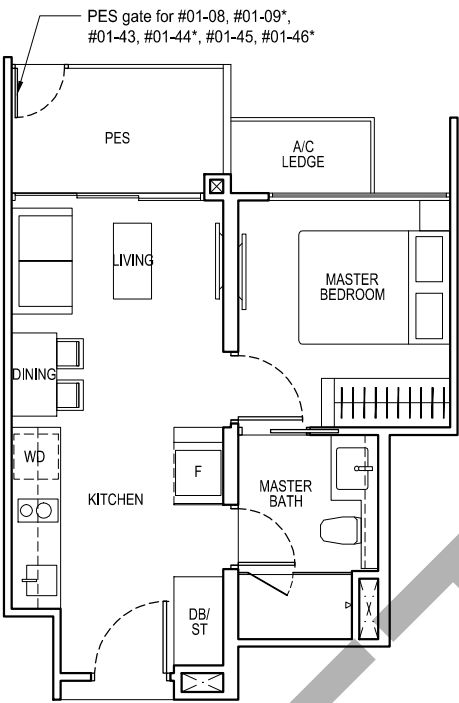
41 sq m / 441 sq ft

BLK 51

#01-06, #01-07\*, #01-08, #01-09\*

BLK 61

#01-43, #01-44\*, #01-45, #01-46\*



## TYPE A1

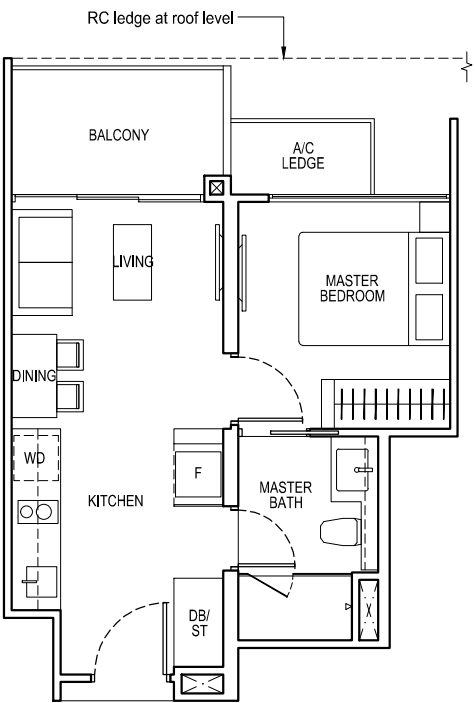
41 sq m / 441 sq ft

BLK 51

#02-06 to #15-06, #02-07\* to #15-07\*,  
#02-08 to #15-08, #02-09\* to #15-09\*

BLK 61

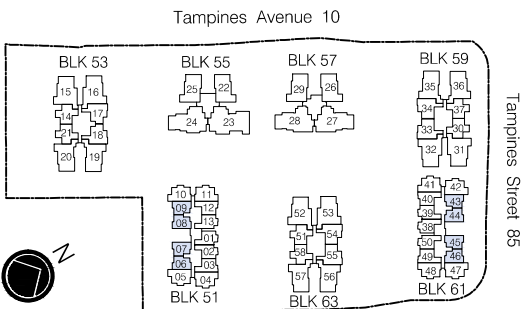
#02-43 to #15-43, #02-44\* to #15-44\*,  
#02-45 to #15-45, #02-46\* to #15-46\*



\*Mirror Image



Area includes air-con (A/C) ledge, private enclosed space (PES), balcony and strata void area where applicable. Some units are mirror images of the apartment plans shown in the brochure. Please refer to the key plan for orientation. The plans are subject to change as may be approved by relevant authorities. All floor plans are approximate measurements only and are subject to government re-survey. The balcony shall not be enclosed unless with the approved balcony screen. For an illustration of the approved balcony screen, please refer to the diagram annexed hereto as "Annexure A".



KEY PLAN  
(Typical Storey)

Tampines Street 86

Keyplan is not drawn to scale

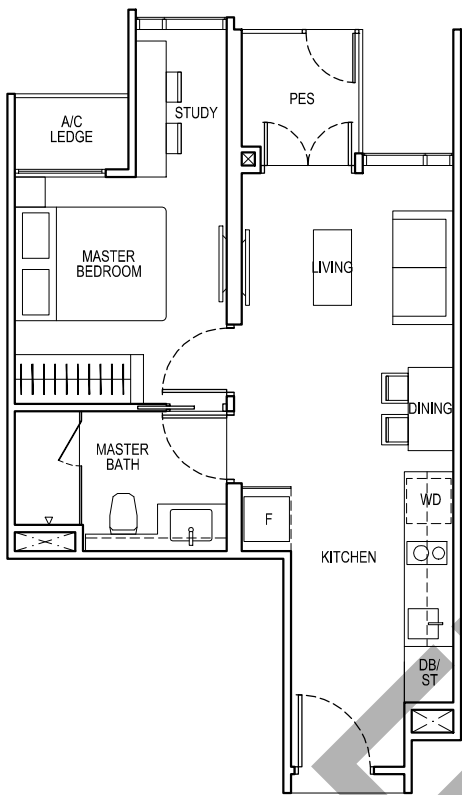
1 - BEDROOM + ENSUITE STUDY

TYPE A2S(p)

44 sq m / 474 sq ft

BLK 51  
#01-01, #01-02\*, #01-13

BLK 61  
#01-38, #01-39\*

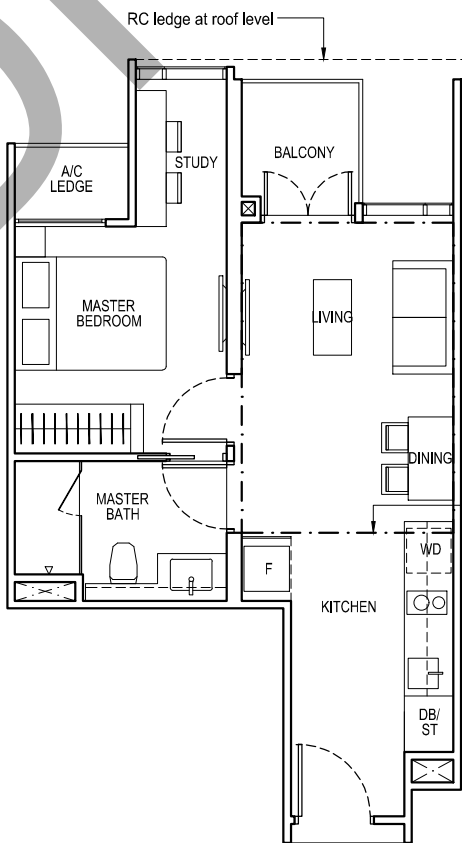


TYPE A2S

44 sq m / 474 sq ft

BLK 51  
#02-01 to #14-01, #02-02\* to #14-02\*,  
#02-13 to #14-13

BLK 61  
#02-38 to #14-38, #02-39\* to #14-39\*,  
#02-50 to #14-50



TYPE A2S(d)

56 sq m / 603 sq ft

including strata void area of 12 sq m / 129 sq ft above living and dining  
Approximate 4.4 m floor to ceiling height at living and dining

BLK 51  
#15-01, #15-02\*, #15-13

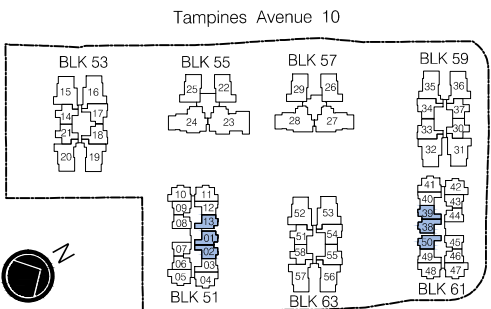
BLK 61  
#15-38, #15-39\*, #15-50

dotted line denotes strata void area  
of 12 sq m / 129 sq ft above living  
and dining for Type A2S(d)

\*Mirror Image



Area includes air-con (A/C) ledge, private enclosed space (PES), balcony and strata void area where applicable. Some units are mirror images of the apartment plans shown in the brochure. Please refer to the key plan for orientation. The plans are subject to change as may be approved by relevant authorities. All floor plans are approximate measurements only and are subject to government re-survey. The balcony shall not be enclosed unless with the approved balcony screen. For an illustration of the approved balcony screen, please refer to the diagram annexed hereto as "Annexure A".



KEY PLAN  
(Typical Storey)

Keyplan is not drawn to scale

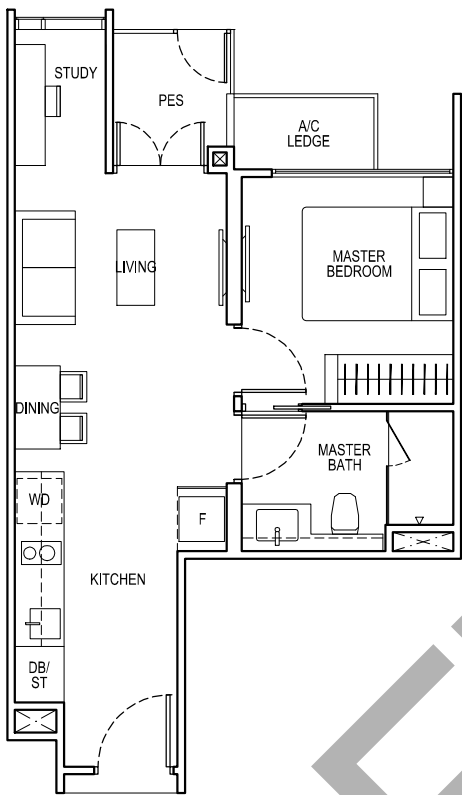
1 - BEDROOM + STUDY

TYPE A3S(p)

44 sq m / 474 sq ft

BLK 51  
#01-03\*, #01-12

BLK 61  
#01-40\*, #01-49

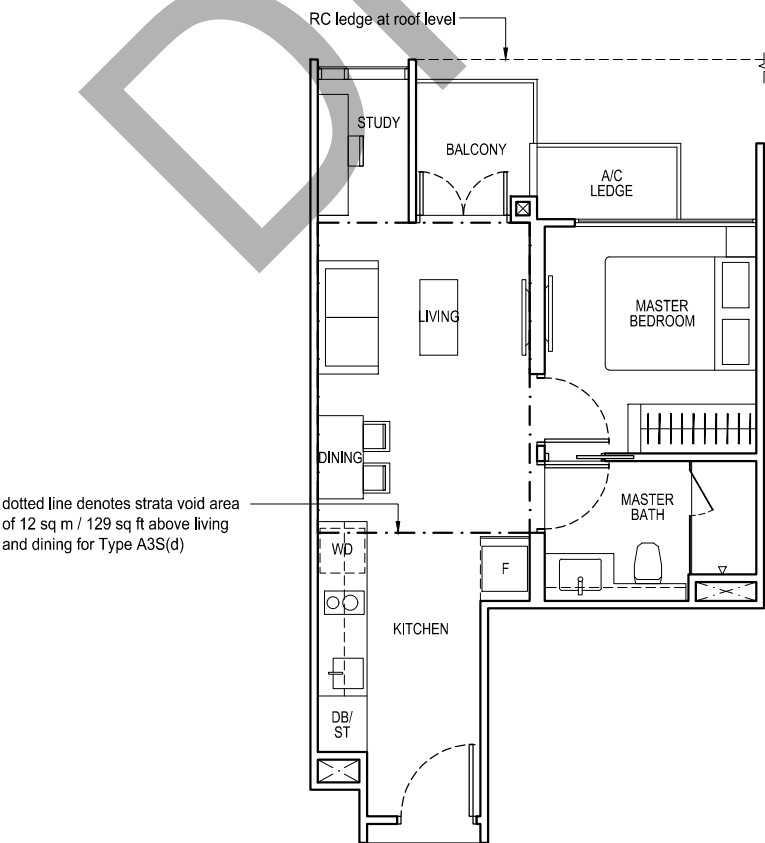


TYPE A3S

44 sq m / 474 sq ft

BLK 51  
#02-03\* to #14-03\*, #02-12 to #14-12

BLK 61  
#02-40\* to #14-40\*, #02-49 to #14-49



TYPE A3S(d)

56 sq m / 603 sq ft

including strata void area of 12 sq m / 129 sq ft above living and dining  
Approximate 4.4 m floor to ceiling height at living and dining

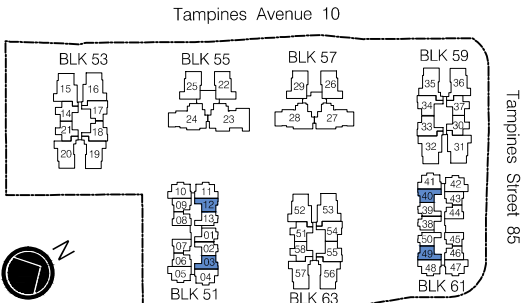
BLK 51  
#15-03\*, #15-12

BLK 61  
#15-40\*, #15-49

\*Mirror Image



Area includes air-con (A/C) ledge, private enclosed space (PES), balcony and strata void area where applicable. Some units are mirror images of the apartment plans shown in the brochure. Please refer to the key plan for orientation. The plans are subject to change as may be approved by relevant authorities. All floor plans are approximate measurements only and are subject to government re-survey. The balcony shall not be enclosed unless with the approved balcony screen. For an illustration of the approved balcony screen, please refer to the diagram annexed hereto as "Annexure A".



KEY PLAN  
(Typical Storey)

Tampines Street 86

Keyplan is not drawn to scale

2 - BEDROOM

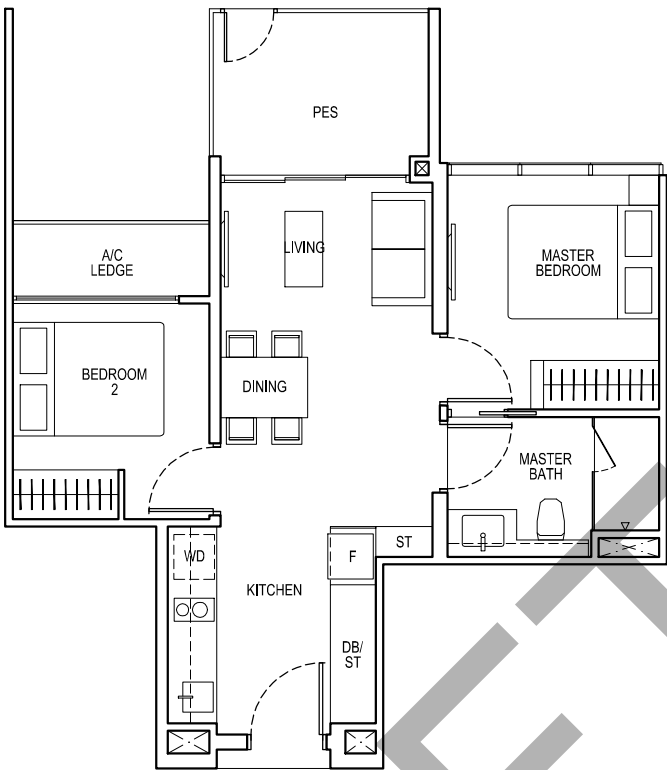
TYPE B1(p)

56 sq m / 603 sq ft

BLK 53  
#01-14\*, #01-21

BLK 59  
#01-30\*, #01-37

BLK 63  
#01-51\*, #01-58



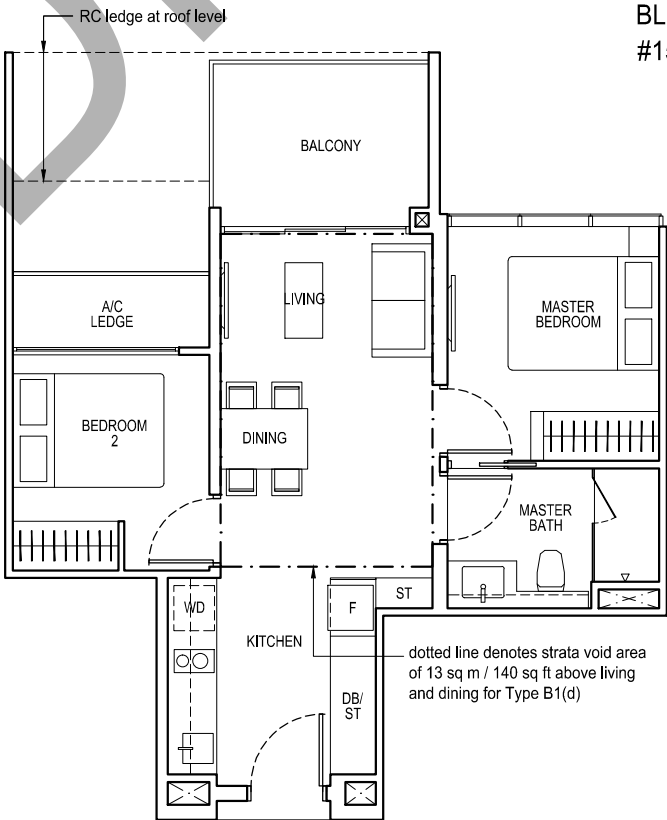
TYPE B1

56 sq m / 603 sq ft

BLK 53  
#02-14\* to #14-14\*, #02-21 to #14-21

BLK 59  
#02-30\* to #14-30\*, #02-37 to #14-37

BLK 63  
#02-51\* to #14-51\*, #02-58 to #14-58



TYPE B1(d)

69 sq m / 743 sq ft

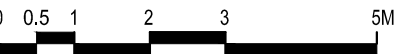
including strata void area of 13 sq m / 140 sq ft above living and dining  
Approximate 4.4 m floor to ceiling height at living and dining

BLK 53  
#15-14\*, #15-21

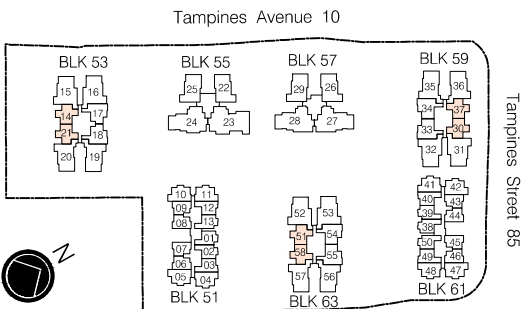
BLK 59  
#15-30\*, #15-37

BLK 63  
#15-51\*, #15-58

\*Mirror Image



Area includes air-con (A/C) ledge, private enclosed space (PES), balcony and strata void area where applicable. Some units are mirror images of the apartment plans shown in the brochure. Please refer to the key plan for orientation. The plans are subject to change as may be approved by relevant authorities. All floor plans are approximate measurements only and are subject to government re-survey. The balcony shall not be enclosed unless with the approved balcony screen. For an illustration of the approved balcony screen, please refer to the diagram annexed hereto as "Annexure A".



KEY PLAN  
(Typical Storey)

Tampines Street 86

Keyplan is not drawn to scale

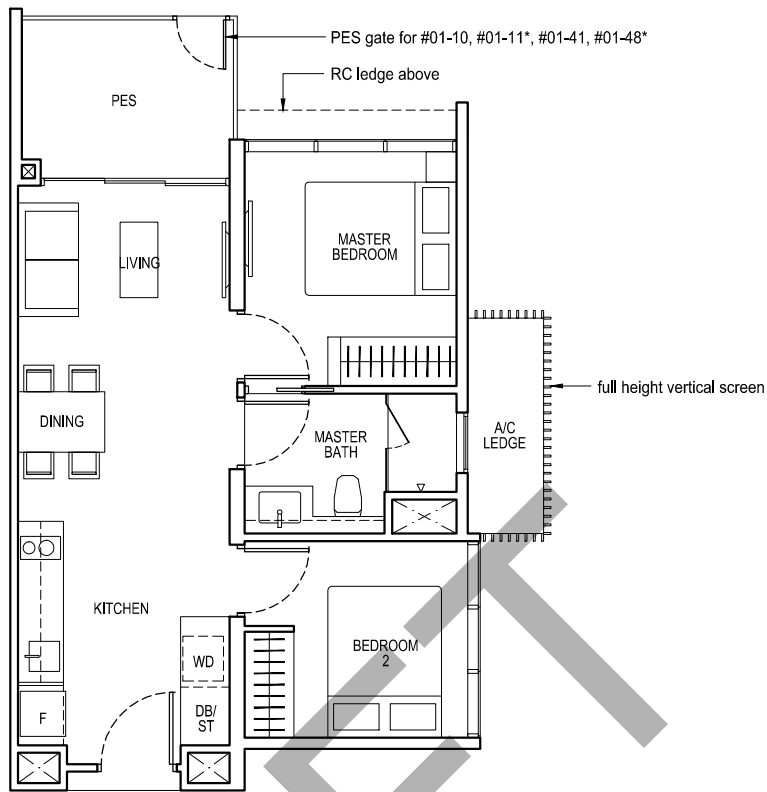
2 - BEDROOM

TYPE B2(p)

56 sq m / 603 sq ft

BLK 51  
#01-10, #01-11\*

BLK 61  
#01-41, #01-42\*, #01-47, #01-48\*



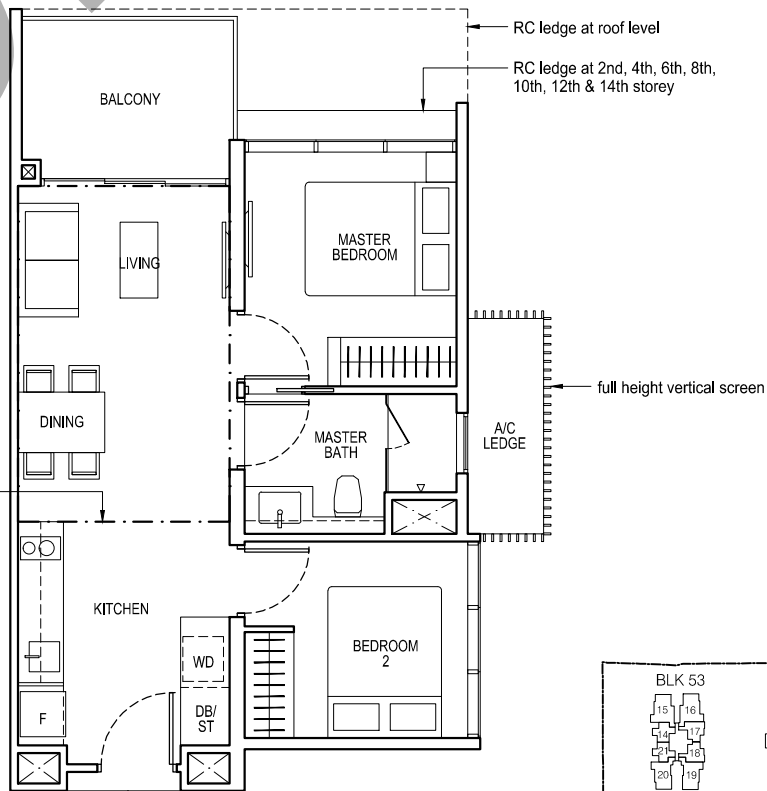
TYPE B2

56 sq m / 603 sq ft

BLK 51  
#03-04 to #14-04, #03-05\* to #14-05\*,  
#02-10 to #14-10, #02-11\* to #14-11\*

BLK 61  
#02-41 to #14-41, #02-42\* to #14-42\*,  
#02-47 to #14-47, #02-48\* to #14-48\*

dotted line denotes strata void area  
of 13 sq m / 140 sq ft above living  
and dining for Type B2(d)



TYPE B2(d)

69 sq m / 743 sq ft

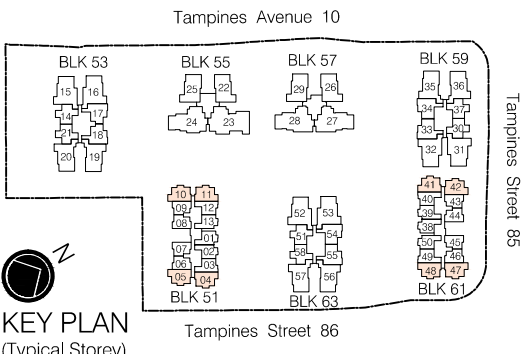
including strata void area of 13 sq m / 140 sq ft above living and dining  
Approximate 4.4 m floor to ceiling height at living and dining

BLK 51  
#15-04, #15-05\*, #15-10, #15-11\*

BLK 61  
#15-41, #15-42\*, #15-47, #15-48\*



Area includes air-con (A/C) ledge, private enclosed space (PES), balcony and strata void area where applicable. Some units are mirror images of the apartment plans shown in the brochure. Please refer to the key plan for orientation. The plans are subject to change as may be approved by relevant authorities. All floor plans are approximate measurements only and are subject to government re-survey. The balcony shall not be enclosed unless with the approved balcony screen. For an illustration of the approved balcony screen, please refer to the diagram annexed hereto as "Annexure A".



KEY PLAN  
(Typical Storey)

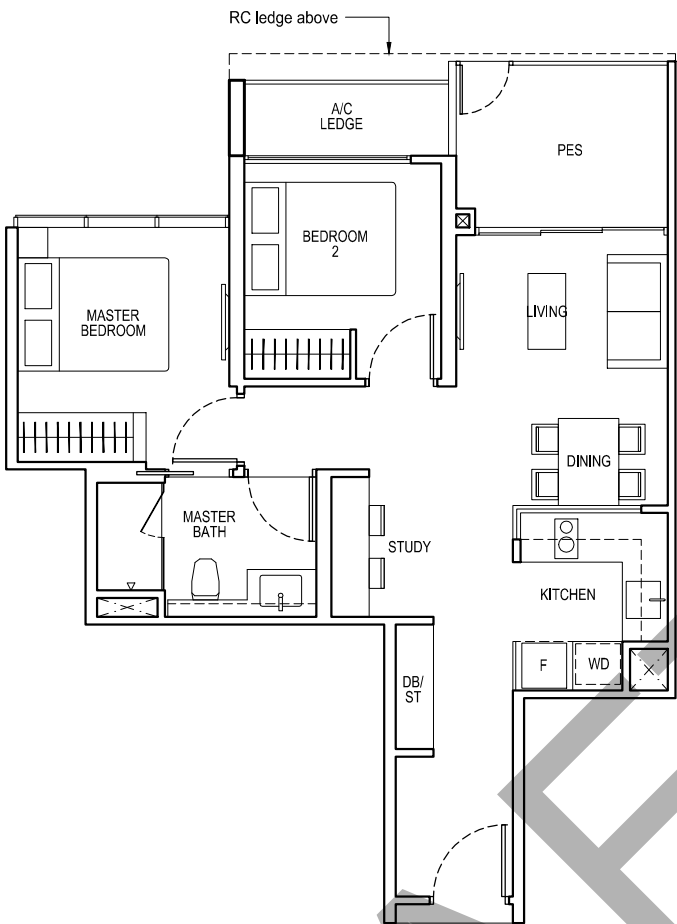
Keyplan is not drawn to scale

# 2 - BEDROOM + STUDY

## TYPE B3S(p)

64 sq m / 689 sq ft

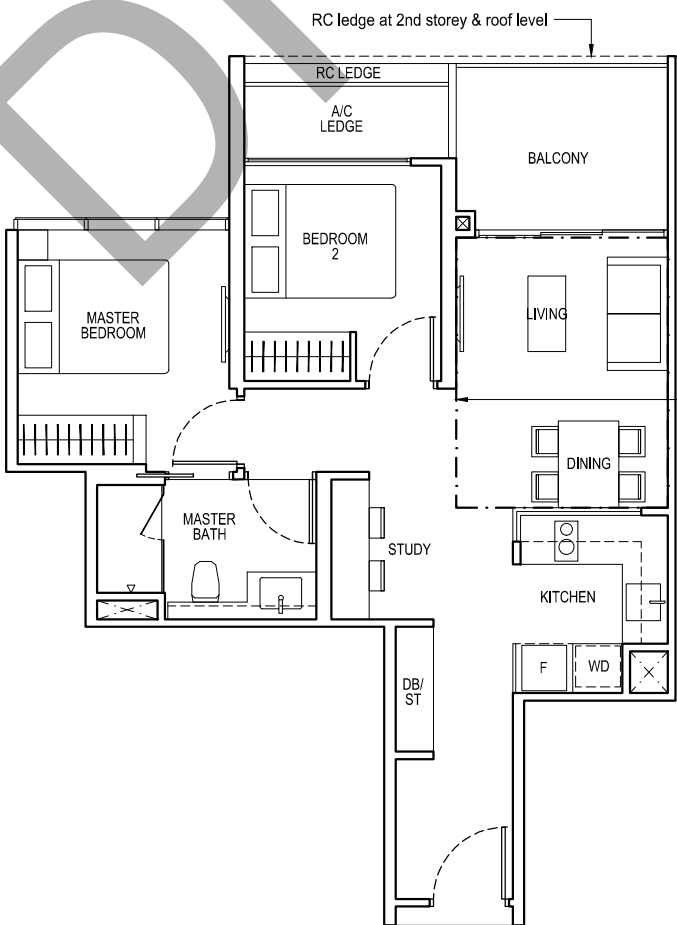
BLK 53  
#01-18



## TYPE B3S

64 sq m / 689 sq ft

BLK 53  
#02-17\* to #14-17\*, #02-18 to #14-18



## TYPE B3S(d)

75 sq m / 807 sq ft

including strata void area of 11 sq m / 118 sq ft above living and dining  
Approximate 4.4 m floor to ceiling height at living and dining

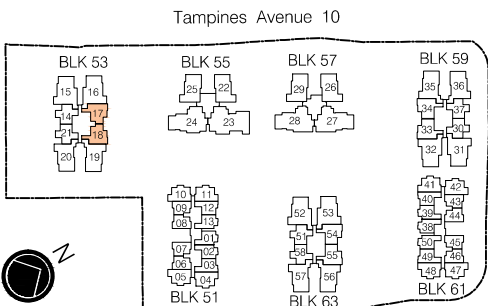
BLK 53  
#15-17\*, #15-18

dotted line denotes strata void area of 11 sq m / 118 sq ft above living and dining for Type B3S(d)

\*Mirror Image



Area includes air-con (A/C) ledge, private enclosed space (PES), balcony and strata void area where applicable. Some units are mirror images of the apartment plans shown in the brochure. Please refer to the key plan for orientation. The plans are subject to change as may be approved by relevant authorities. All floor plans are approximate measurements only and are subject to government re-survey. The balcony shall not be enclosed unless with the approved balcony screen. For an illustration of the approved balcony screen, please refer to the diagram annexed hereto as "Annexure A".



KEY PLAN  
(Typical Storey)

Tampines Street 86

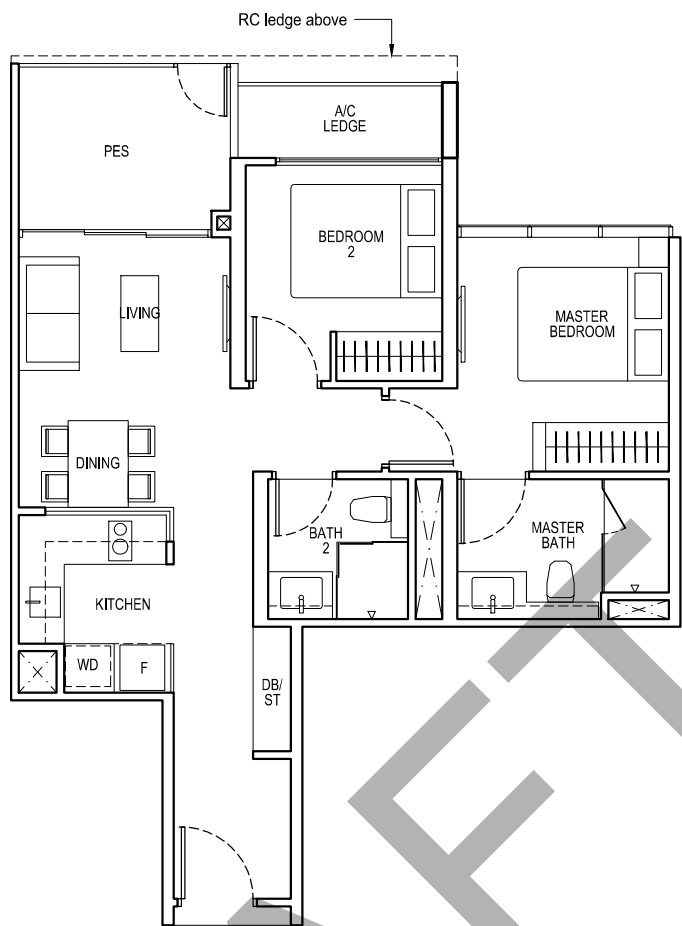
Keyplan is not drawn to scale

2 - BEDROOM PREMIUM

TYPE B4P(p)  
65 sq m / 700 sq ft

BLK 59  
#01-34\*

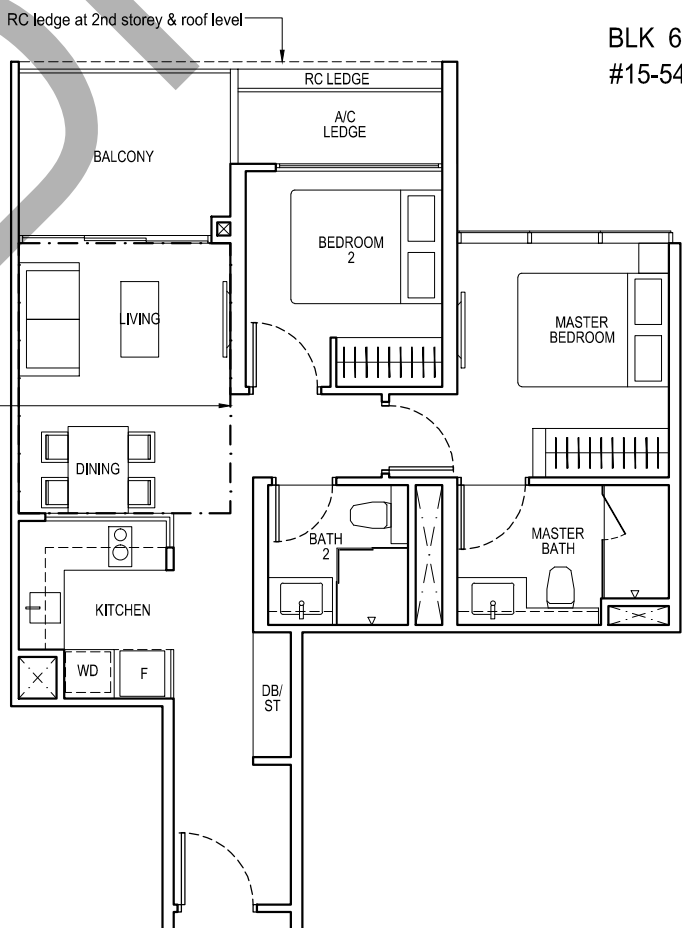
BLK 63  
#01-54, #01-55\*



TYPE B4P  
65 sq m / 700 sq ft

BLK 59  
#02-33 to #14-33, #02-34\* to #14-34\*

BLK 63  
#02-54 to #14-54, #02-55\* to #14-55\*



TYPE B4P(d)  
76 sq m / 818 sq ft

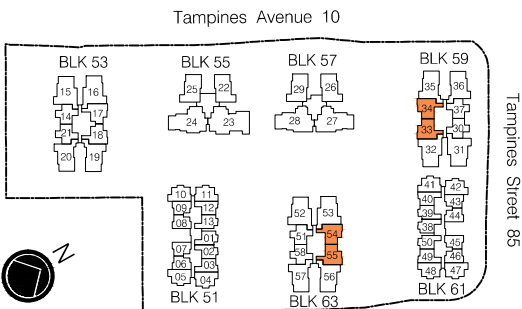
including strata void area of 11 sq m / 118 sq ft above living and dining  
Approximate 4.4 m floor to ceiling height at living and dining

BLK 59  
#15-33, #15-34\*

BLK 63  
#15-54, #15-55\*



Area includes air-con (A/C) ledge, private enclosed space (PES), balcony and strata void area where applicable. Some units are mirror images of the apartment plans shown in the brochure. Please refer to the key plan for orientation. The plans are subject to change as may be approved by relevant authorities. All floor plans are approximate measurements only and are subject to government re-survey. The balcony shall not be enclosed unless with the approved balcony screen. For an illustration of the approved balcony screen, please refer to the diagram annexed hereto as "Annexure A".



KEY PLAN  
(Typical Storey)

Tampines Street 86

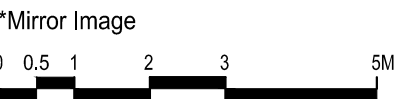
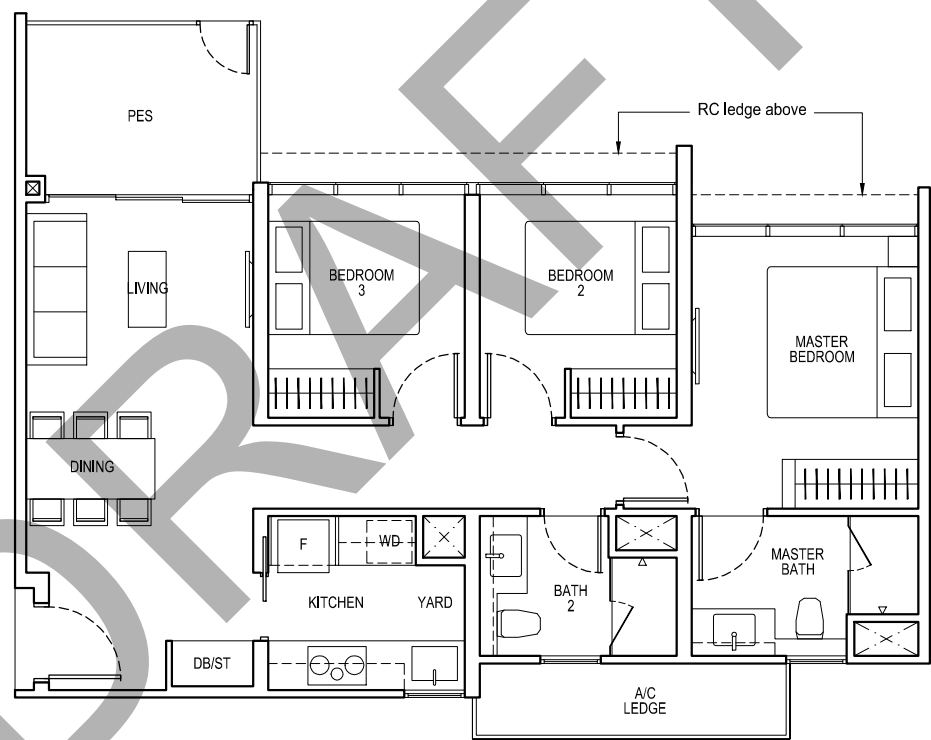
Keyplan is not drawn to scale

3 - BEDROOM

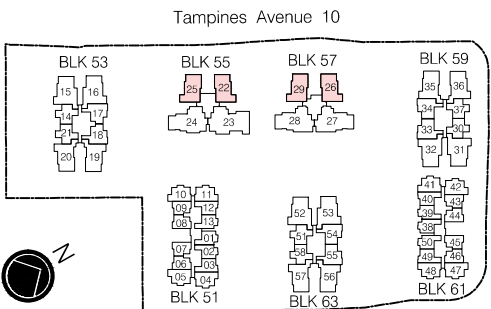
TYPE C1(p)  
86 sq m / 926 sq ft

BLK 55  
#01-22\*, #01-25

BLK 57  
#01-26\*, #01-29



Area includes air-con (A/C) ledge, private enclosed space (PES), balcony and strata void area where applicable. Some units are mirror images of the apartment plans shown in the brochure. Please refer to the key plan for orientation. The plans are subject to change as may be approved by relevant authorities. All floor plans are approximate measurements only and are subject to government re-survey. The balcony shall not be enclosed unless with the approved balcony screen. For an illustration of the approved balcony screen, please refer to the diagram annexed hereto as "Annexure A".



KEY PLAN  
(Typical Storey)

Tampines Street 86

Keyplan is not drawn to scale



3 - BEDROOM

TYPE C1

86 sq m / 926 sq ft

BLK 55  
#02-22\* to #14-22\*, #02-25 to #14-25

BLK 57  
#02-26\* to #14-26\*, #02-29 to #14-29

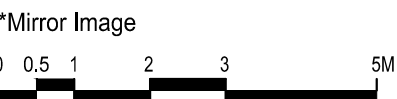
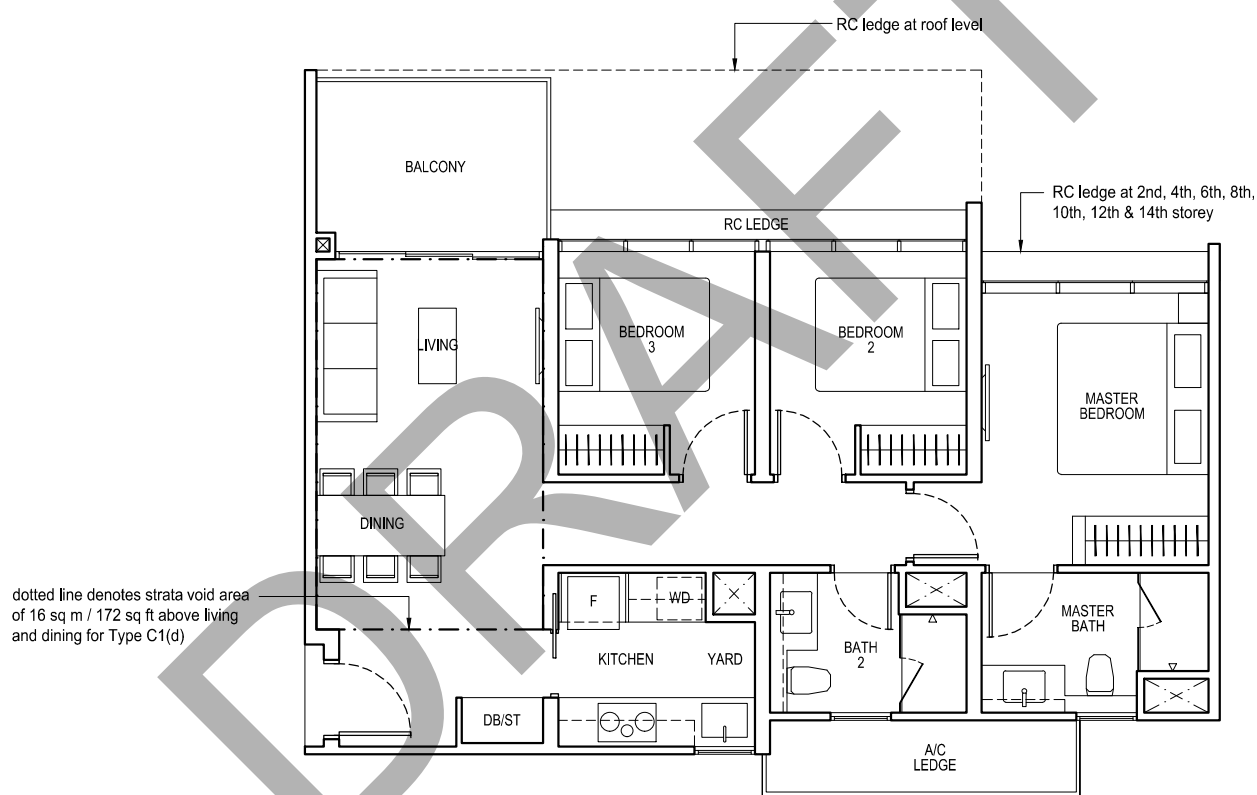
TYPE C1(d)

102 sq m / 1098 sq ft

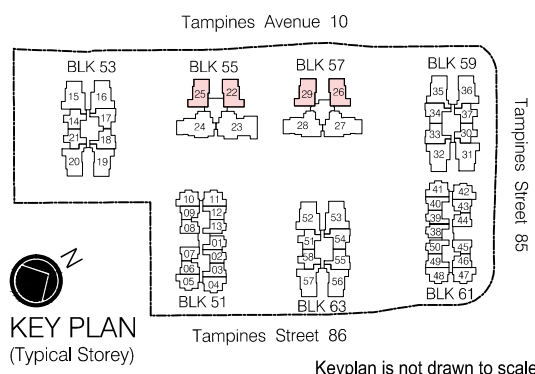
including strata void area of 16 sq m / 172 sq ft above living and dining  
Approximate 4.4 m floor to ceiling height at living and dining

BLK 55  
#15-22\*, #15-25

BLK 57  
#15-26\*, #15-29



Area includes air-con (A/C) ledge, private enclosed space (PES), balcony and strata void area where applicable. Some units are mirror images of the apartment plans shown in the brochure. Please refer to the key plan for orientation. The plans are subject to change as may be approved by relevant authorities. All floor plans are approximate measurements only and are subject to government re-survey. The balcony shall not be enclosed unless with the approved balcony screen. For an illustration of the approved balcony screen, please refer to the diagram annexed hereto as "Annexure A".



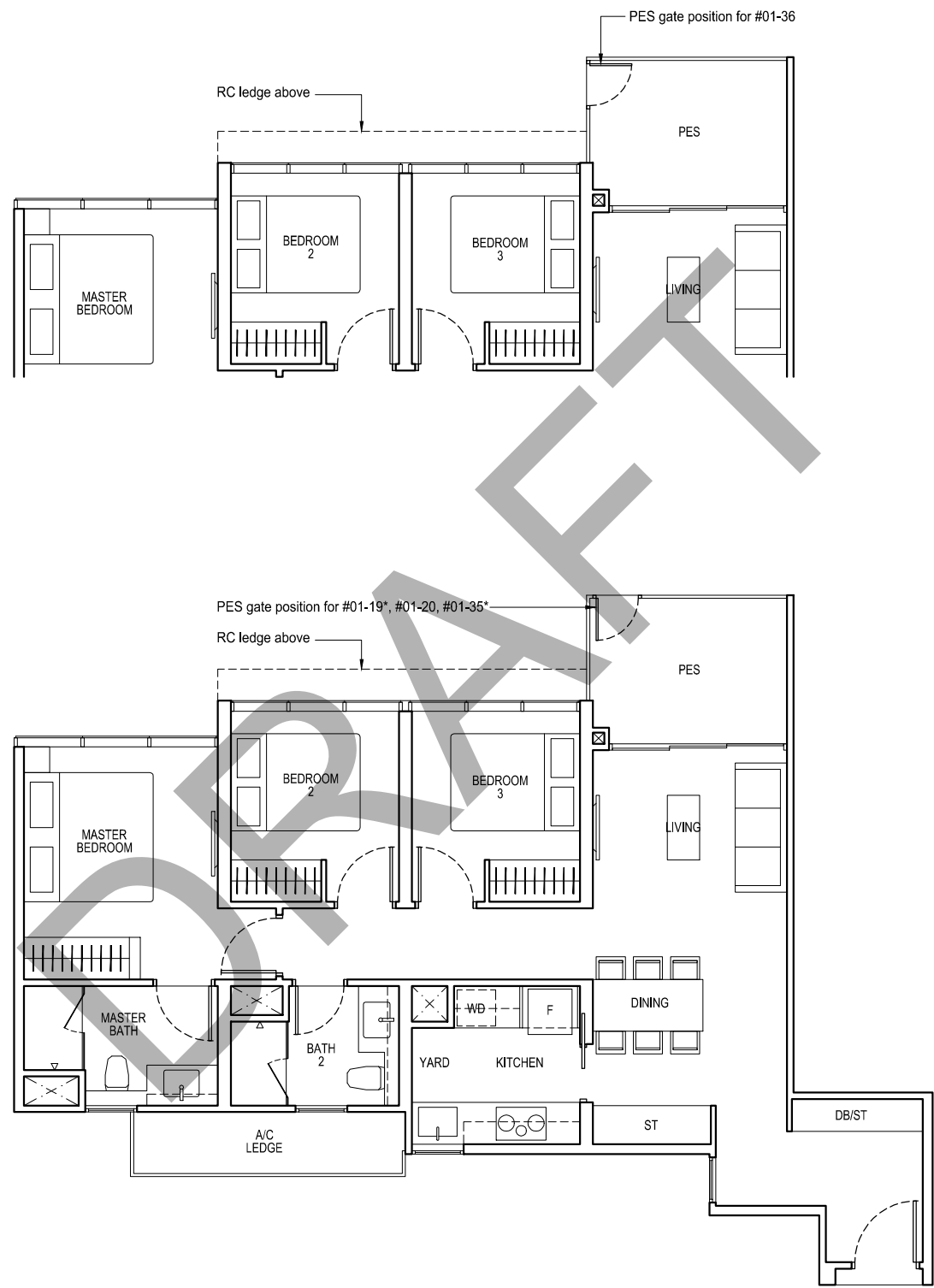
Keyplan is not drawn to scale

3 - BEDROOM

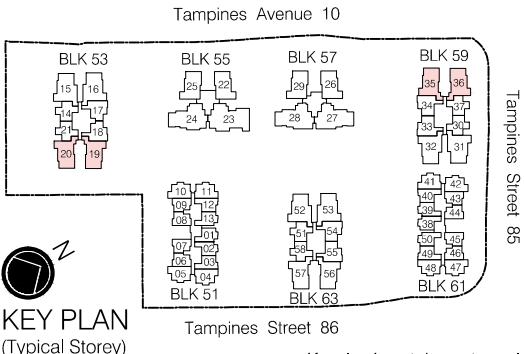
TYPE C2(p)  
92 sq m / 990 sq ft

BLK 53  
#01-19\*, #01-20

BLK 59  
#01-35\*, #01-36



Area includes air-con (A/C) ledge, private enclosed space (PES), balcony and strata void area where applicable. Some units are mirror images of the apartment plans shown in the brochure. Please refer to the key plan for orientation. The plans are subject to change as may be approved by relevant authorities. All floor plans are approximate measurements only and are subject to government re-survey. The balcony shall not be enclosed unless with the approved balcony screen. For an illustration of the approved balcony screen, please refer to the diagram annexed hereto as "Annexure A".



KEY PLAN  
(Typical Storey)

Keyplan is not drawn to scale

3 - BEDROOM

TYPE C2

92 sq m / 990 sq ft

BLK 53  
#02-19\* to #14-19\*, #02-20 to #14-20

BLK 59  
#02-35\* to #14-35\*, #02-36 to #14-36

BLK 63  
#02-56\* to #14-56\*, #02-57 to #14-57

TYPE C2(d)

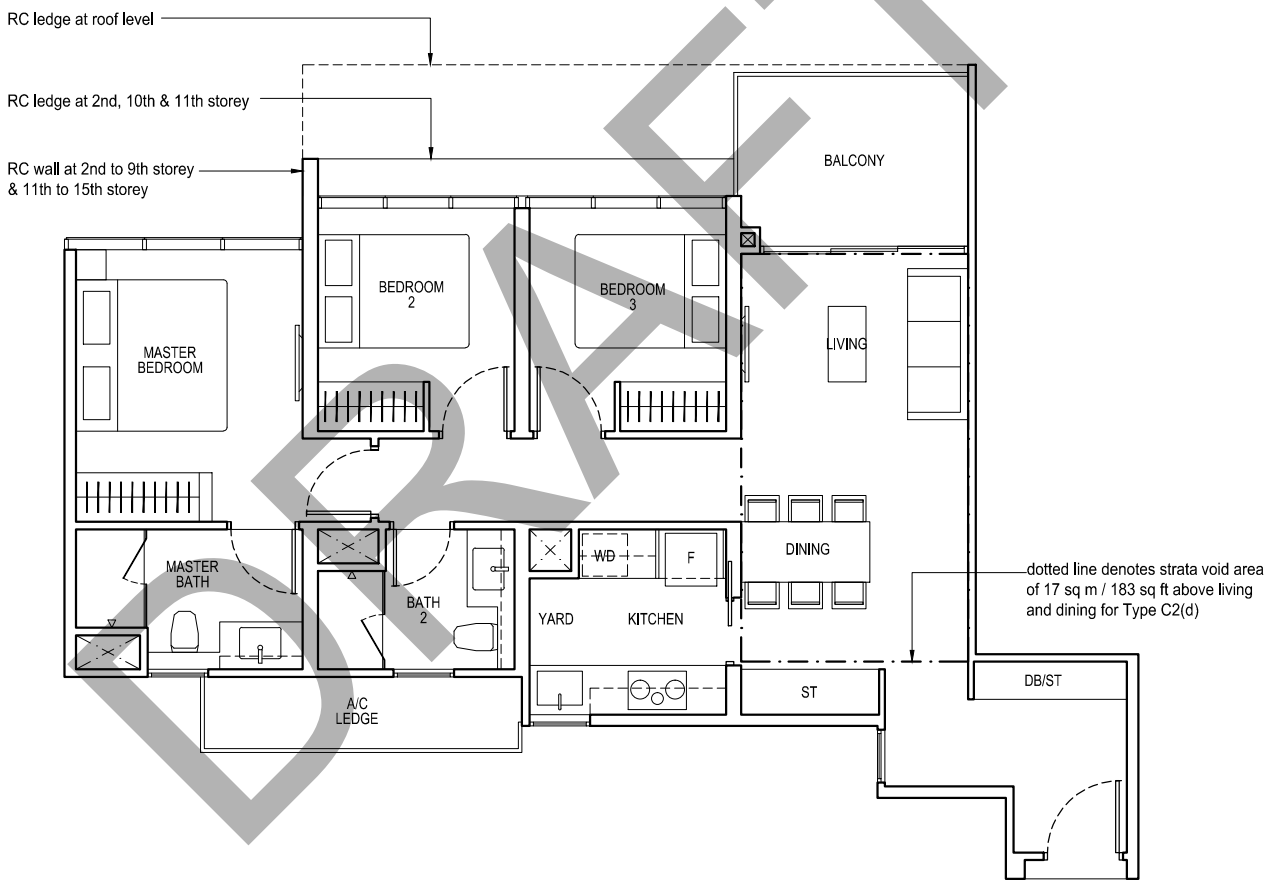
109 sq m / 1173 sq ft

including strata void area of 17 sq m / 183 sq ft above living and dining  
Approximate 4.4 m floor to ceiling height at living and dining

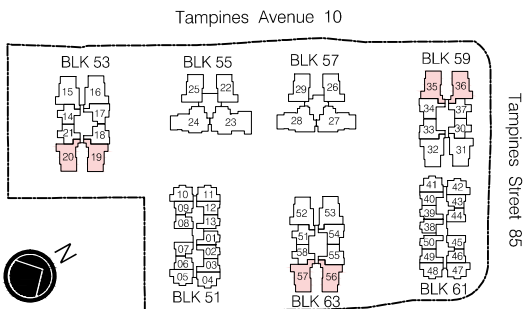
BLK 53  
#15-19\*, #15-20

BLK 59  
#15-35\*, #15-36

BLK 63  
#15-56\*, #15-57



Area includes air-con (A/C) ledge, private enclosed space (PES), balcony and strata void area where applicable. Some units are mirror images of the apartment plans shown in the brochure. Please refer to the key plan for orientation. The plans are subject to change as may be approved by relevant authorities. All floor plans are approximate measurements only and are subject to government re-survey. The balcony shall not be enclosed unless with the approved balcony screen. For an illustration of the approved balcony screen, please refer to the diagram annexed hereto as "Annexure A".



KEY PLAN  
(Typical Storey)

Keyplan is not drawn to scale

3 - BEDROOM PREMIUM + FLEXI

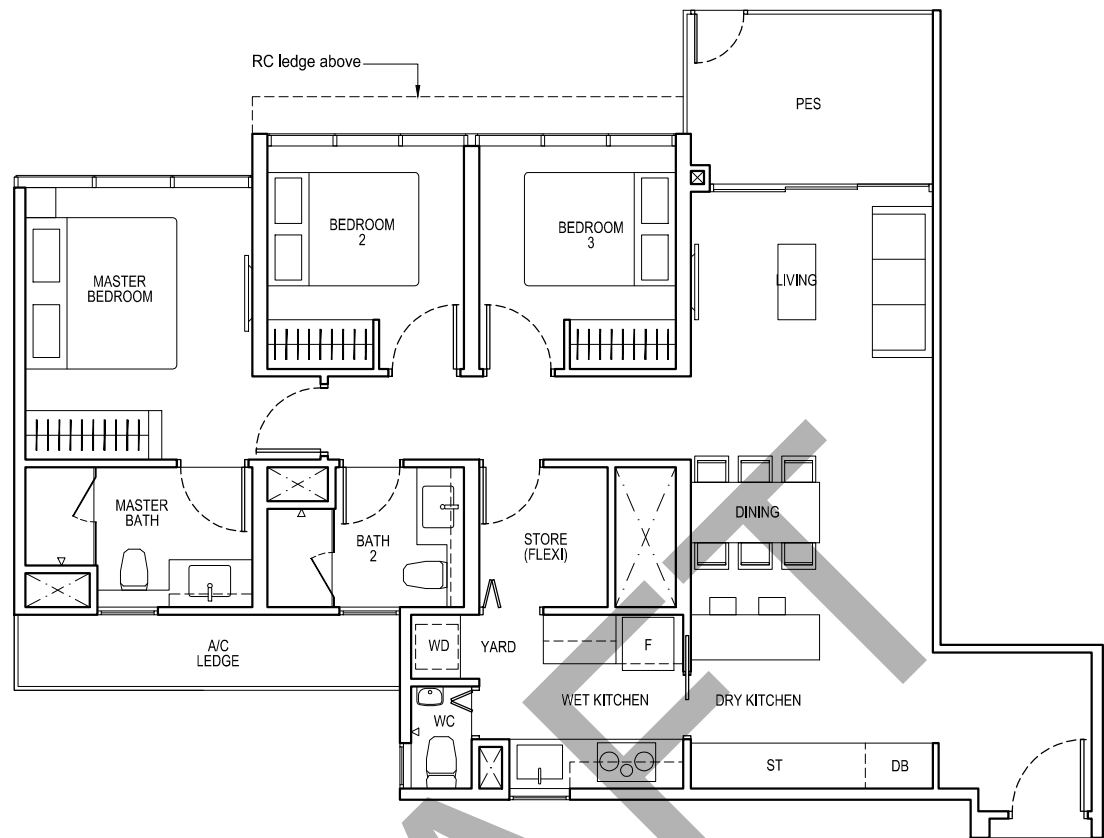
TYPE C3P(p)

105 sq m / 1130 sq ft

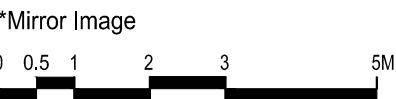
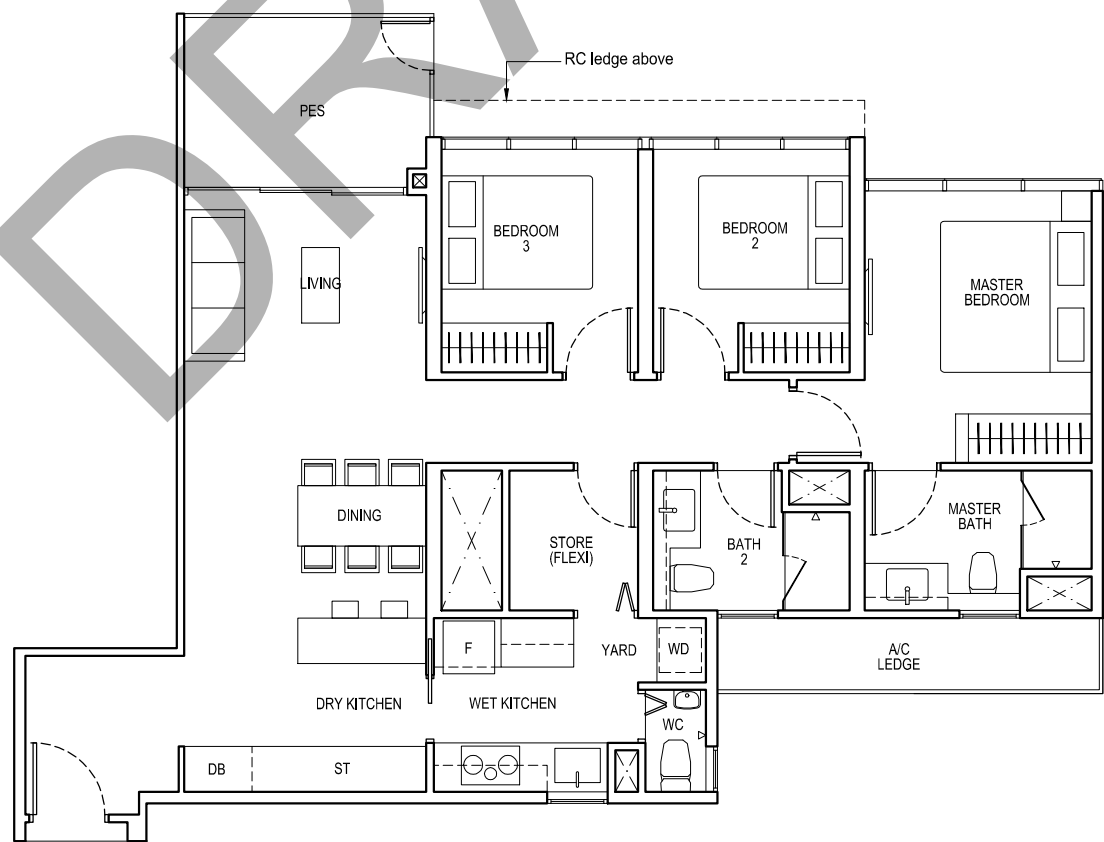
BLK 53  
#01-15\*, #01-16

BLK 59  
#01-32

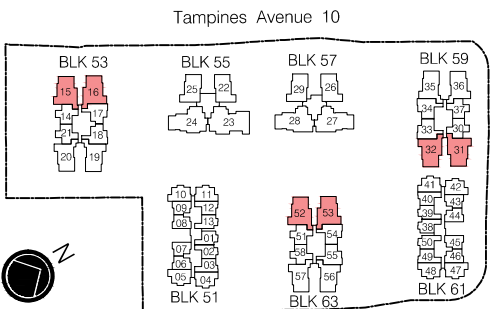
BLK 63  
#01-52\*, #01-53



BLK 59  
#01-31



Area includes air-con (A/C) ledge, private enclosed space (PES), balcony and strata void area where applicable. Some units are mirror images of the apartment plans shown in the brochure. Please refer to the key plan for orientation. The plans are subject to change as may be approved by relevant authorities. All floor plans are approximate measurements only and are subject to government re-survey. The balcony shall not be enclosed unless with the approved balcony screen. For an illustration of the approved balcony screen, please refer to the diagram annexed hereto as "Annexure A".



KEY PLAN  
(Typical Storey)

Tampines Street 86

Keyplan is not drawn to scale

# 3 - BEDROOM PREMIUM + FLEXI

## TYPE C3P

105 sq m / 1130 sq ft

BLK 53  
#02-15\* to #14-15\*, #02-16 to #14-16

BLK 59  
#02-31\* to #14-31\*, #02-32 to #14-32

BLK 63  
#02-52\* to #14-52\*, #02-53 to #14-53

## TYPE C3P(d)

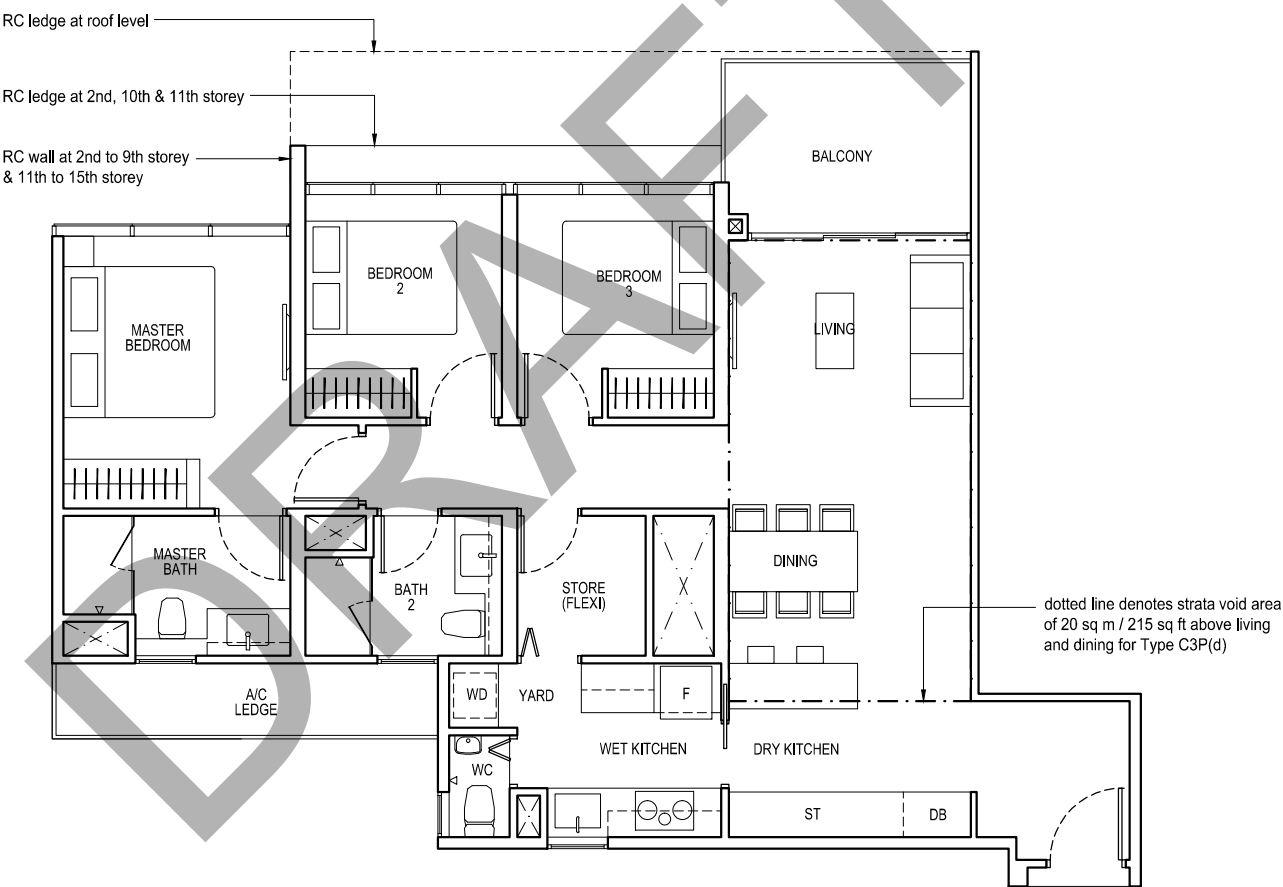
125 sq m / 1346 sq ft

including strata void area of 20 sq m / 215 sq ft above living and dining  
Approximate 4.4 m floor to ceiling height at living and dining

BLK 53  
#15-15\*, #15-16

BLK 59  
#15-31\*, #15-32

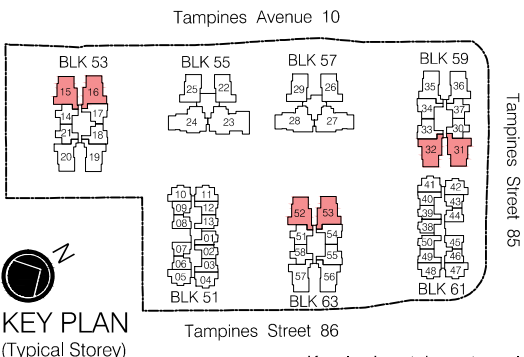
BLK 63  
#15-52\*, #15-53



\*Mirror Image



Area includes air-con (A/C) ledge, private enclosed space (PES), balcony and strata void area where applicable. Some units are mirror images of the apartment plans shown in the brochure. Please refer to the key plan for orientation. The plans are subject to change as may be approved by relevant authorities. All floor plans are approximate measurements only and are subject to government re-survey. The balcony shall not be enclosed unless with the approved balcony screen. For an illustration of the approved balcony screen, please refer to the diagram annexed hereto as "Annexure A".

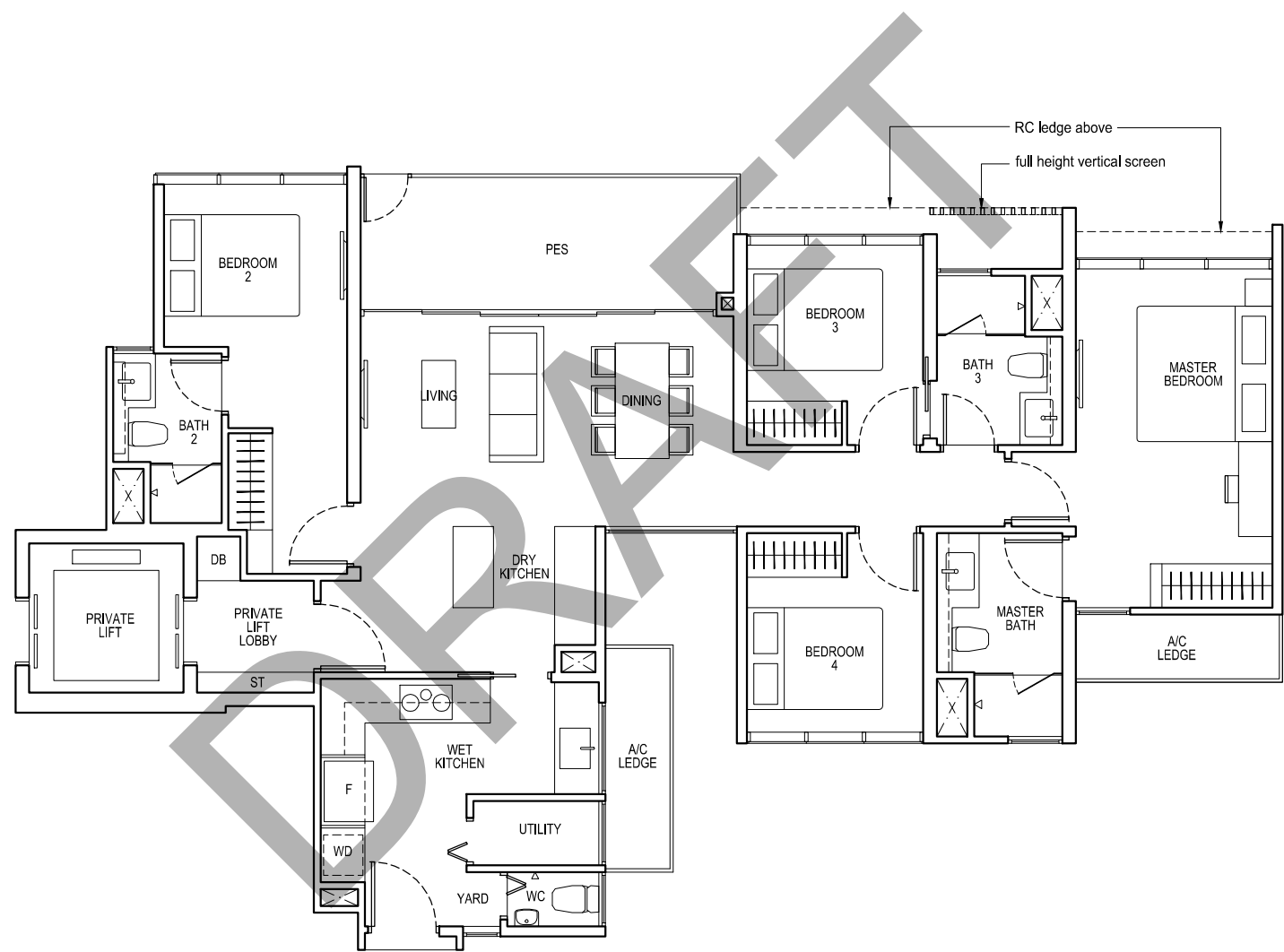


KEY PLAN  
(Typical Storey)

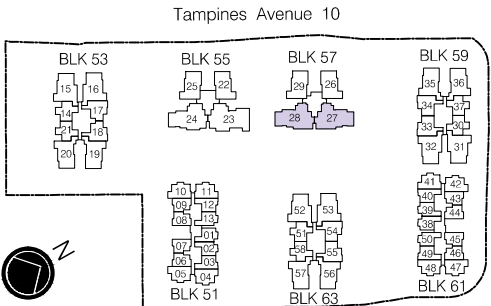
Keyplan is not drawn to scale

4 - BEDROOM

TYPE D1(p)  
133 sq m / 1432 sq ft  
BLK 57  
#01-27\*, #01-28

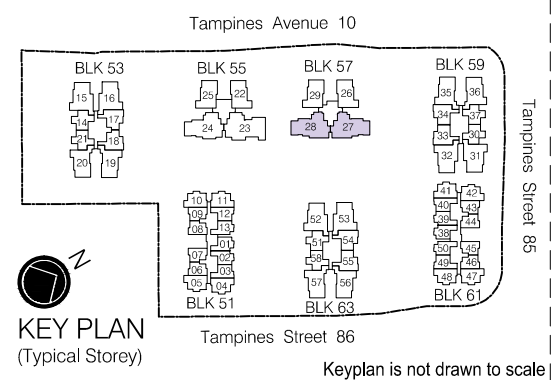


Area includes air-con (A/C) ledge, private enclosed space (PES), balcony and strata void area where applicable. Some units are mirror images of the apartment plans shown in the brochure. Please refer to the key plan for orientation. The plans are subject to change as may be approved by relevant authorities. All floor plans are approximate measurements only and are subject to government re-survey. The balcony shall not be enclosed unless with the approved balcony screen. For an illustration of the approved balcony screen, please refer to the diagram annexed hereto as "Annexure A".



KEY PLAN  
(Typical Storey)

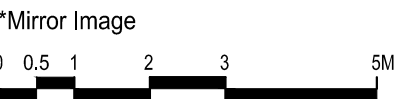
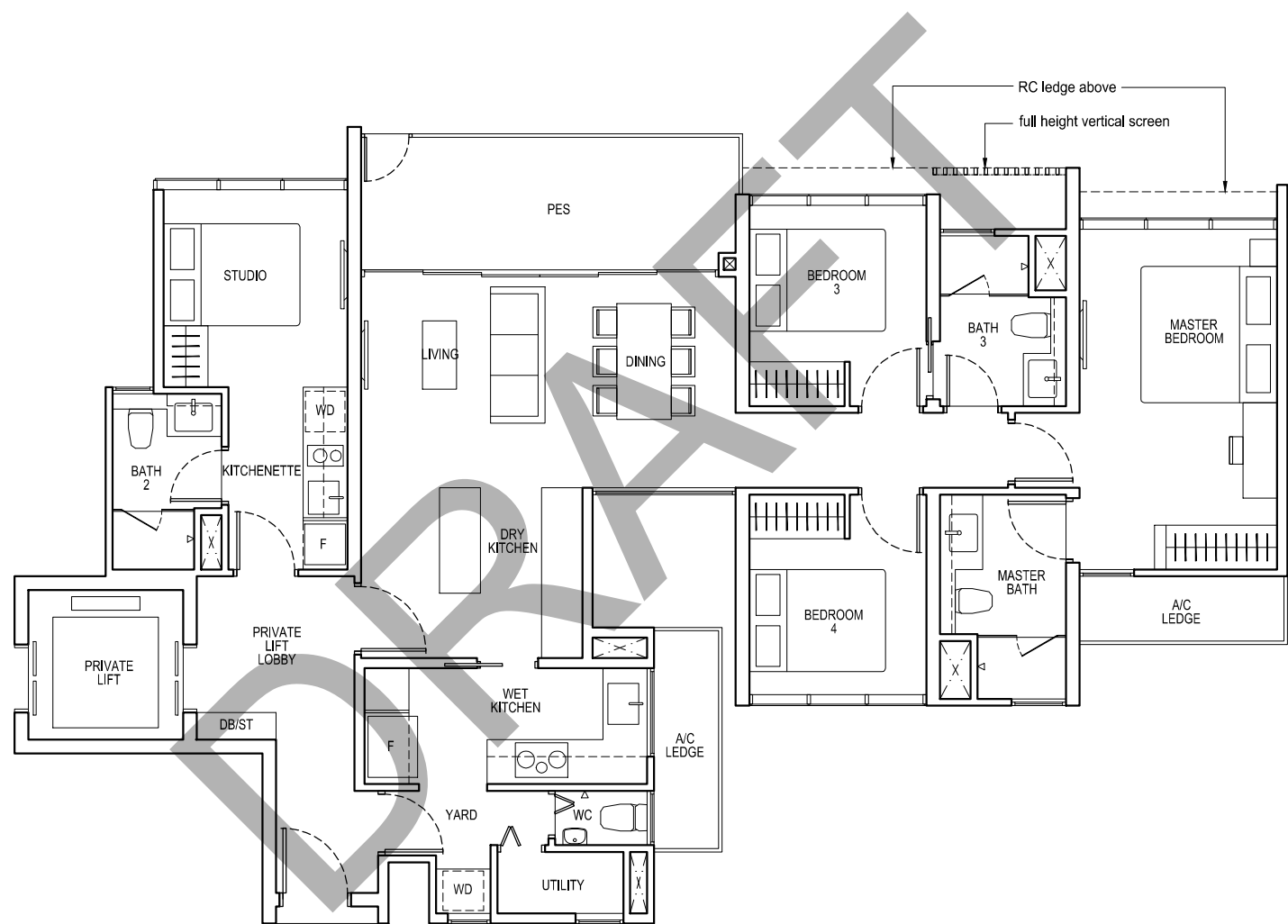
Keyplan is not drawn to scale



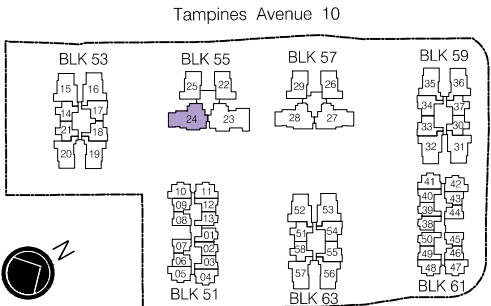
4 - BEDROOM DUAL-KEY

TYPE D2DK(p)  
138 sq m / 1485 sq ft

BLK 55  
#01-24



Area includes air-con (A/C) ledge, private enclosed space (PES), balcony and strata void area where applicable. Some units are mirror images of the apartment plans shown in the brochure. Please refer to the key plan for orientation. The plans are subject to change as may be approved by relevant authorities. All floor plans are approximate measurements only and are subject to government re-survey. The balcony shall not be enclosed unless with the approved balcony screen. For an illustration of the approved balcony screen, please refer to the diagram annexed hereto as "Annexure A".



KEY PLAN  
(Typical Storey)

Keyplan is not drawn to scale



# 4 - BEDROOM DUAL-KEY

## TYPE D2DK

138 sq m / 1485 sq ft

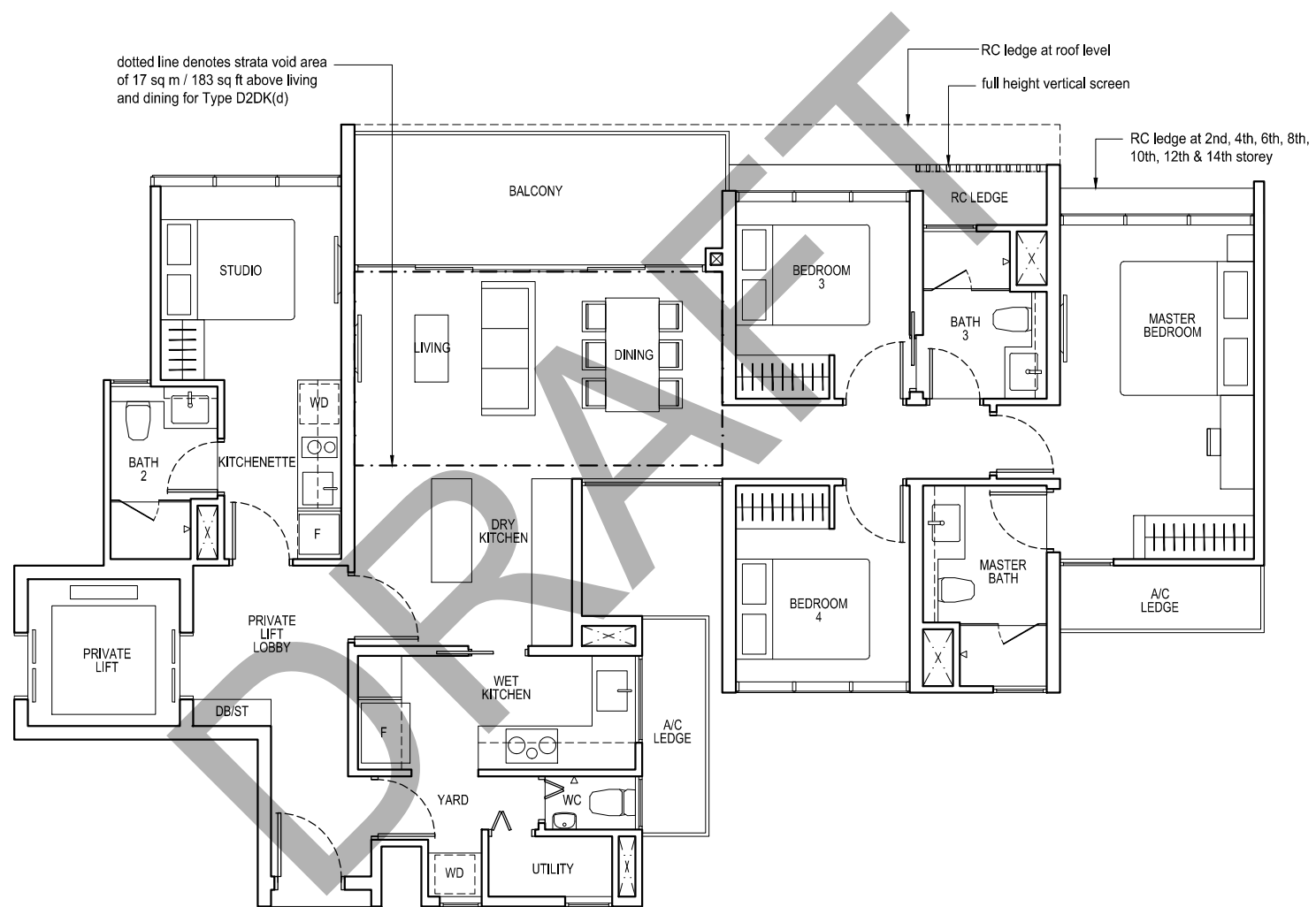
BLK 55  
#02-24 to #14-24

## TYPE D2DK(d)

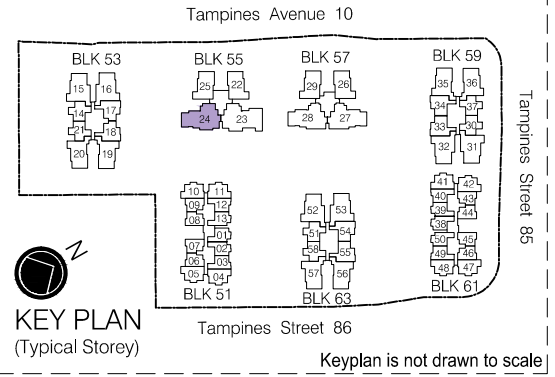
155 sq m / 1668 sq ft

including strata void area of 17 sq m / 183 sq ft above living and dining  
Approximate 4.4 m floor to ceiling height at living and dining

BLK 55  
#15-24



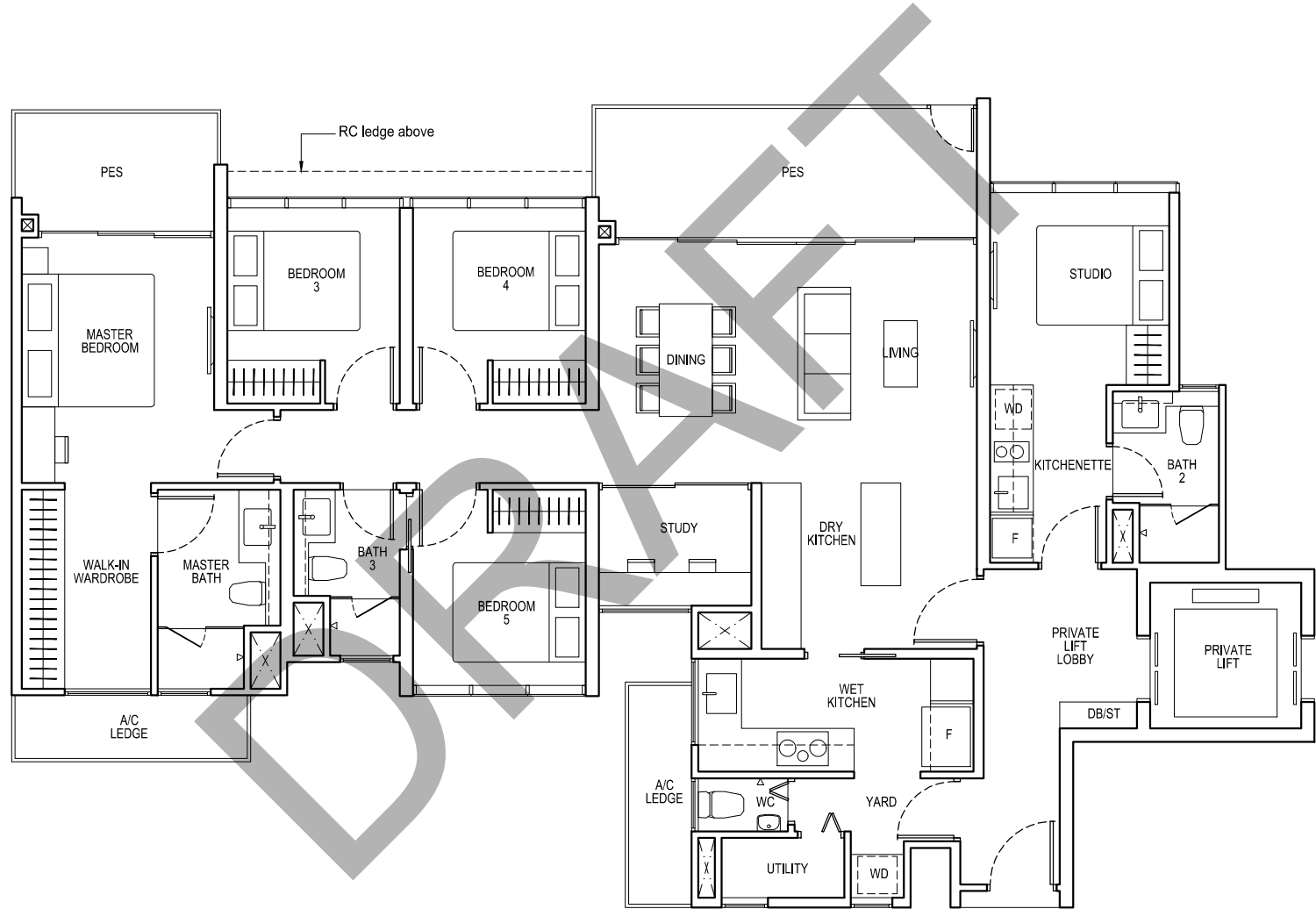
Area includes air-con (A/C) ledge, private enclosed space (PES), balcony and strata void area where applicable. Some units are mirror images of the apartment plans shown in the brochure. Please refer to the key plan for orientation. The plans are subject to change as may be approved by relevant authorities. All floor plans are approximate measurements only and are subject to government re-survey. The balcony shall not be enclosed unless with the approved balcony screen. For an illustration of the approved balcony screen, please refer to the diagram annexed hereto as "Annexure A".



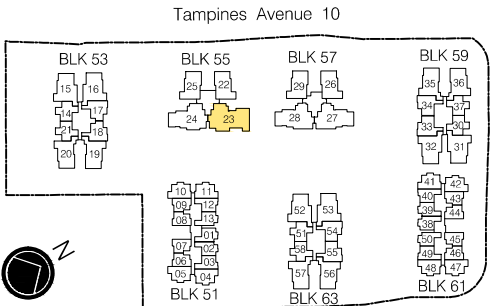
5 - BEDROOM DUAL KEY + STUDY

TYPE E1DKS(p)  
164 sq m / 1765 sq ft

BLK 55  
#01-23



Area includes air-con (A/C) ledge, private enclosed space (PES), balcony and strata void area where applicable. Some units are mirror images of the apartment plans shown in the brochure. Please refer to the key plan for orientation. The plans are subject to change as may be approved by relevant authorities. All floor plans are approximate measurements only and are subject to government re-survey. The balcony shall not be enclosed unless with the approved balcony screen. For an illustration of the approved balcony screen, please refer to the diagram annexed hereto as "Annexure A".



KEY PLAN  
(Typical Storey)

Tampines Street 86

Keyplan is not drawn to scale

5 - BEDROOM DUAL KEY + STUDY

TYPE E1DKS

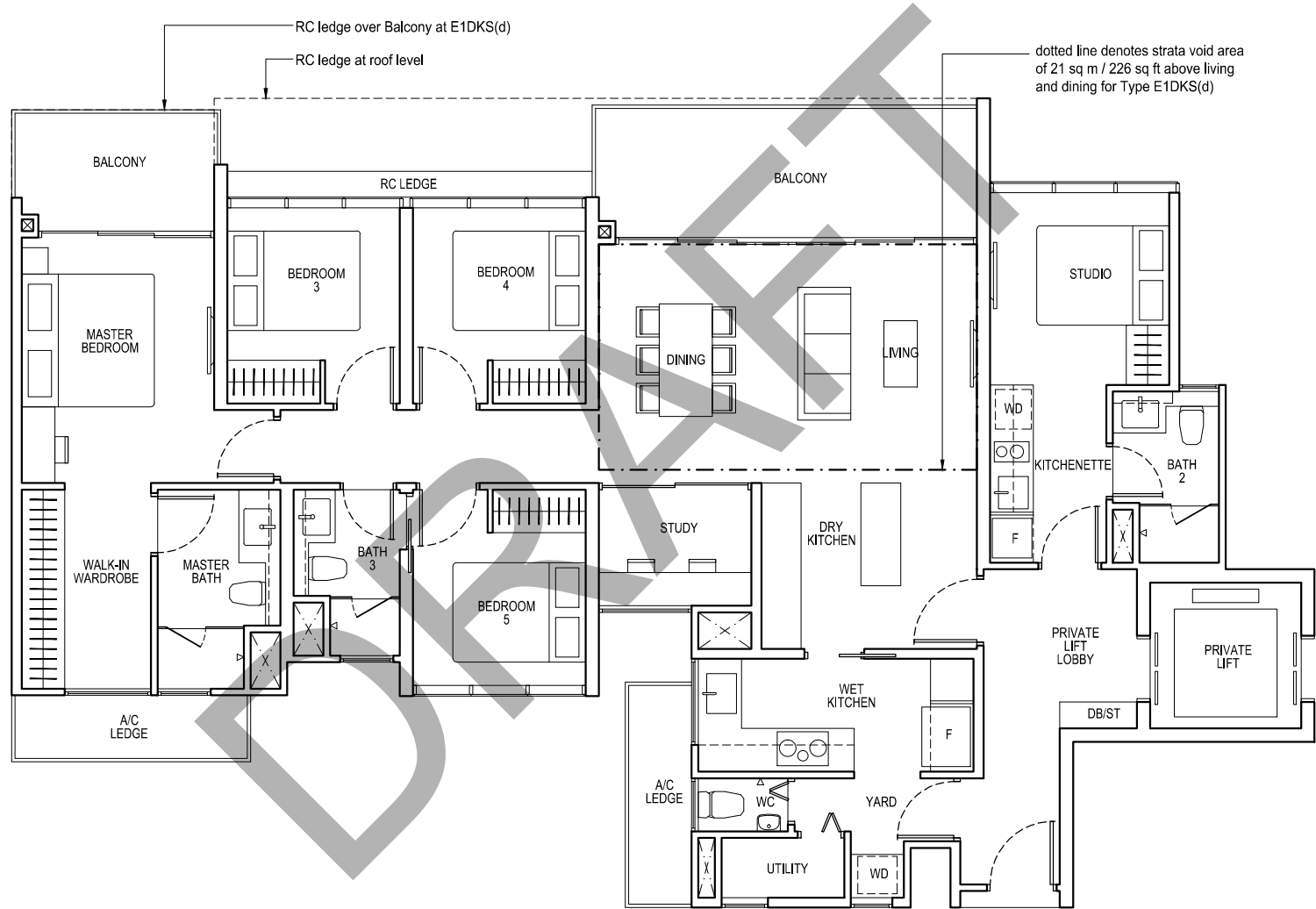
164 sq m / 1765 sq ft

BLK 55  
#02-23 to #14-23

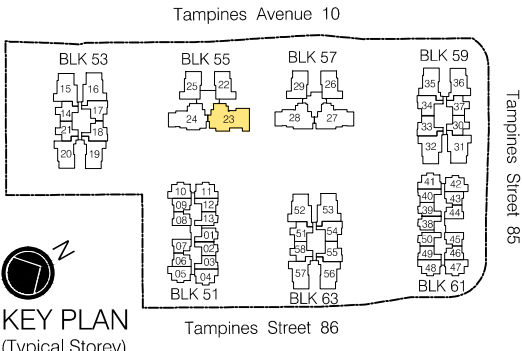
TYPE E1DKS(d)

185 sq m / 1991 sq ft

including strata void area of 21 sq m / 226 sq ft above living and dining  
Approximate 4.4 m floor to ceiling height at living and dining  
BLK 55  
#15-23

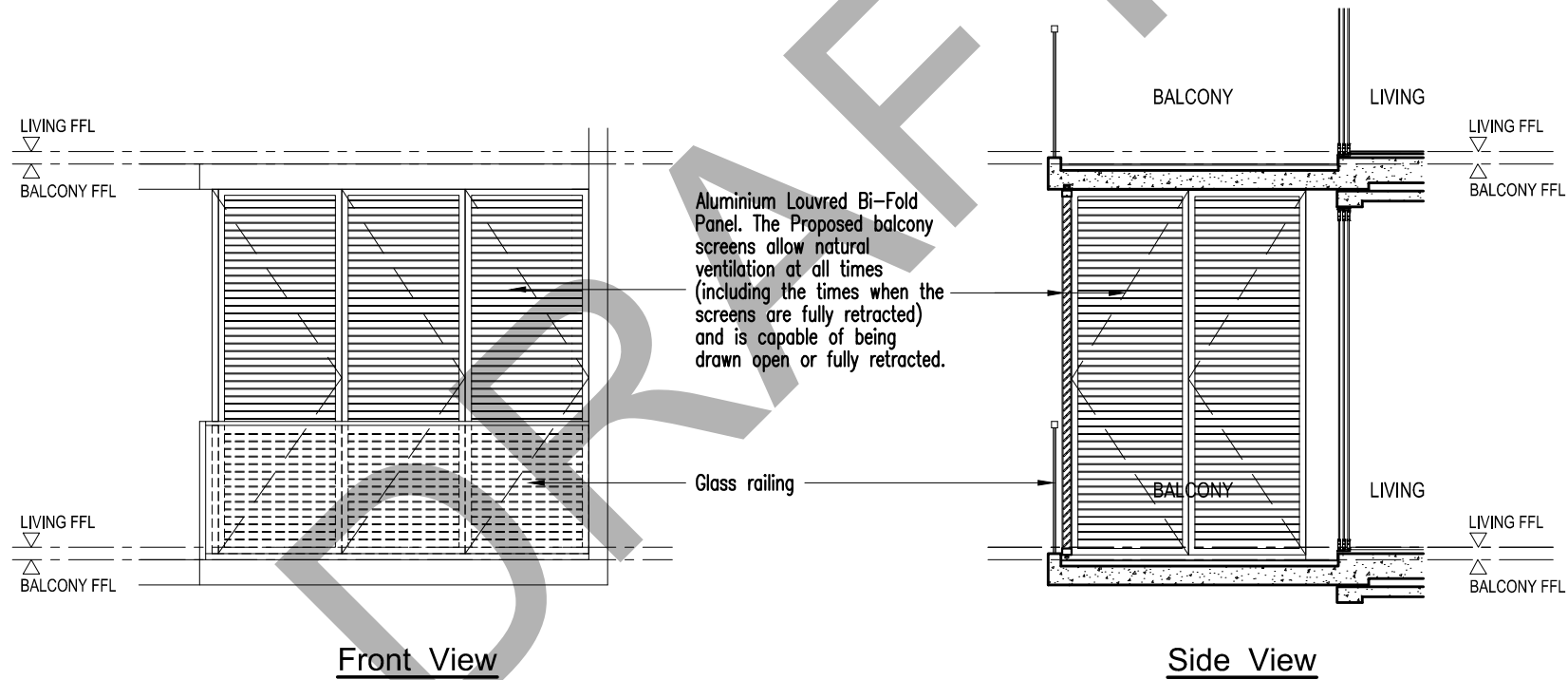


Area includes air-con (A/C) ledge, private enclosed space (PES), balcony and strata void area where applicable. Some units are mirror images of the apartment plans shown in the brochure. Please refer to the key plan for orientation. The plans are subject to change as may be approved by relevant authorities. All floor plans are approximate measurements only and are subject to government re-survey. The balcony shall not be enclosed unless with the approved balcony screen. For an illustration of the approved balcony screen, please refer to the diagram annexed hereto as "Annexure A".



ANNEXURE A

Approved Balcony Screen



Note:  
The balcony shall not be enclosed unless with the approved balcony screen as shown above. The cost of screen and installation shall be borne by the Purchaser.