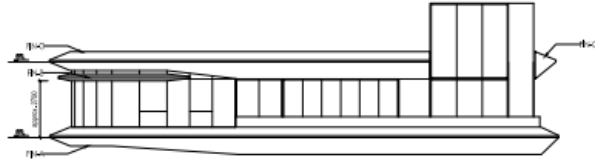


FOUR - BEDROOM

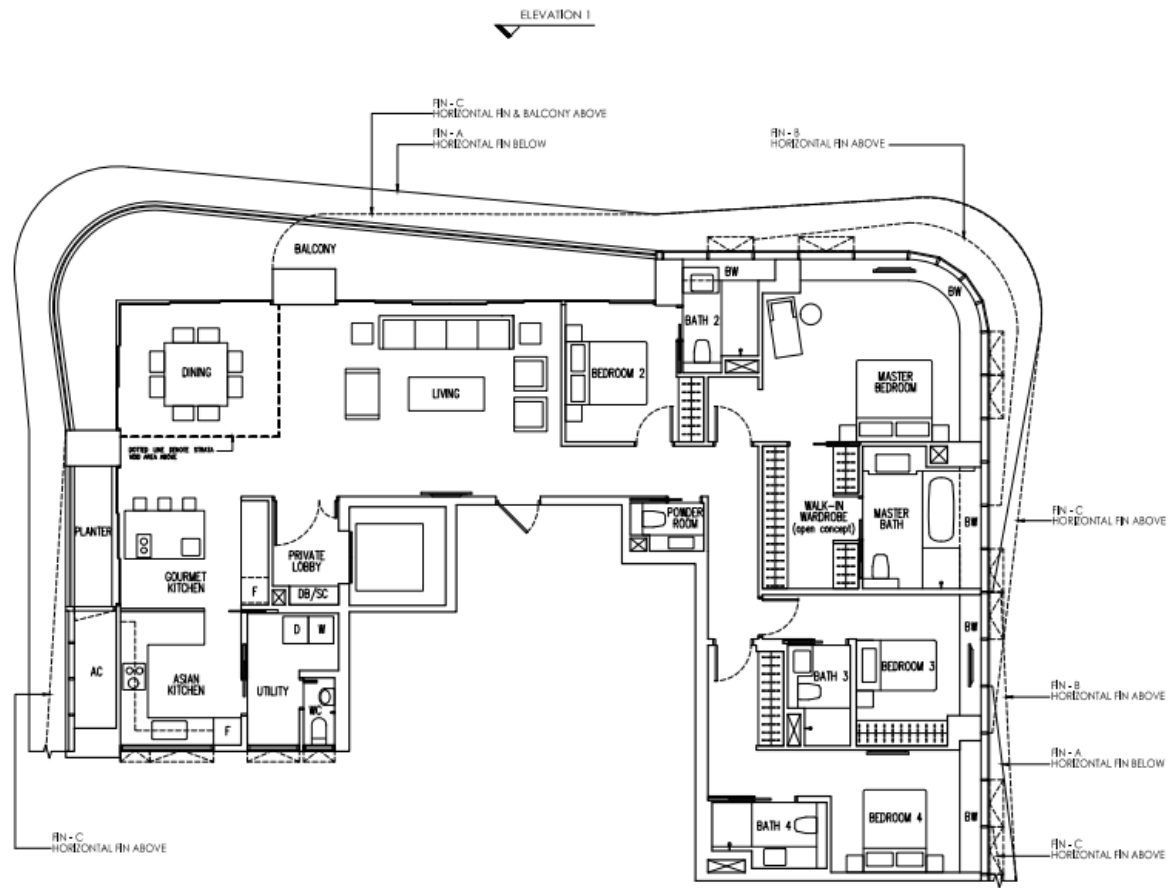
Type C2 (M)

250 sq m / 2,691 sq ft
 (including 13 sq m / 140 sq ft of
 strata void area above dining area)

BLOCK 18	#17-05	#26-05
	#19-05	#28-05
	#21-05	#33-05



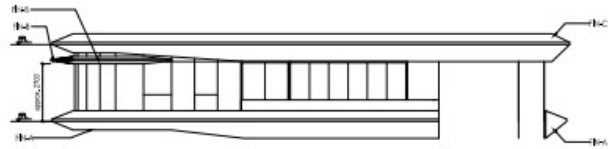
ELEVATION 1
 NOT TO SCALE



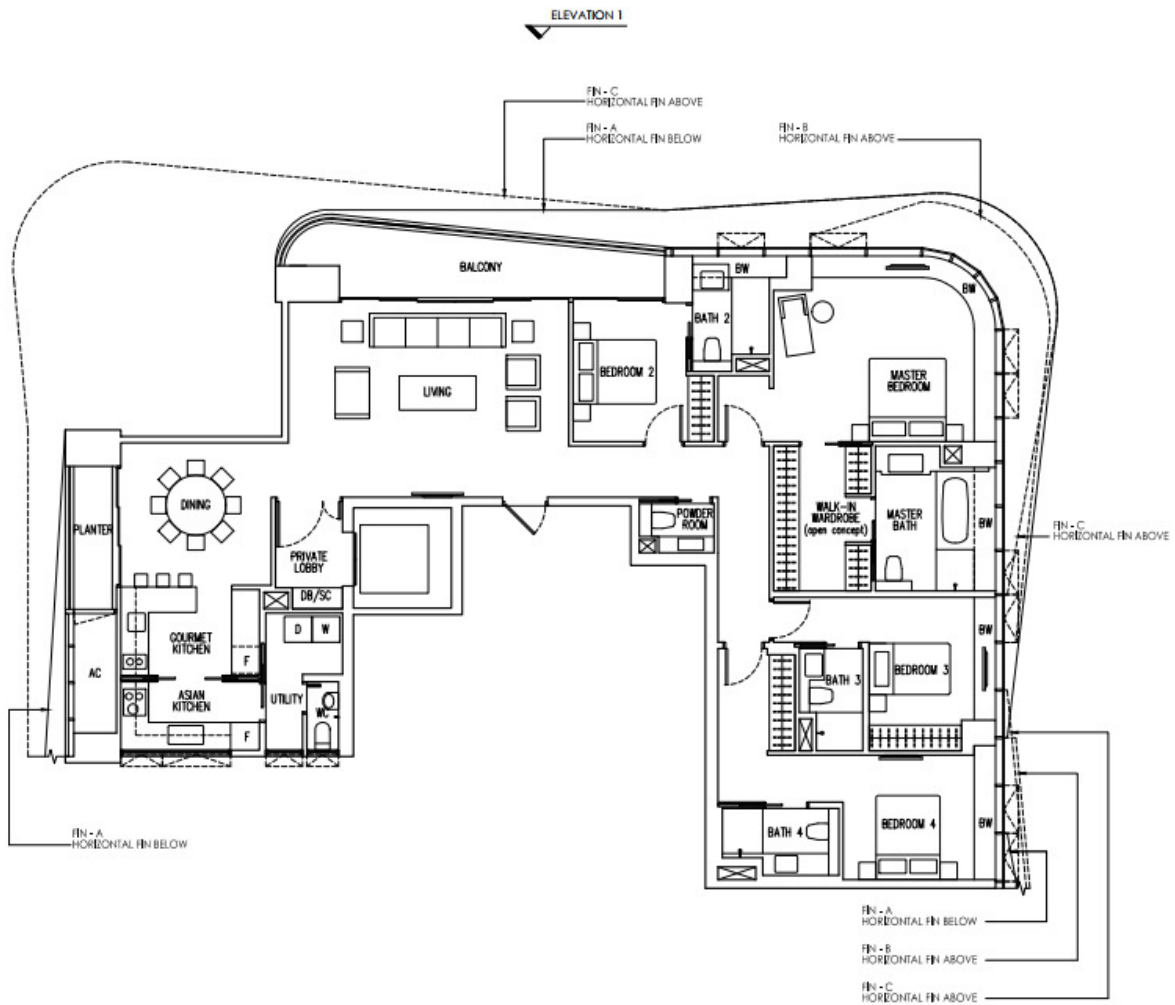
FOUR - BEDROOM

Type C1 (M)
 209 sq m/ 2,250 sq ft

BLOCK 18	#16-05	#22-05	#29-05
	#18-05	#25-05	#32-05
	#20-05	#27-05	#34-05



ELEVATION 1
 NOT TO SCALE

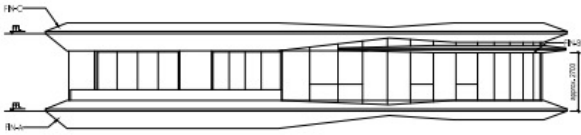


THREE - BEDROOM

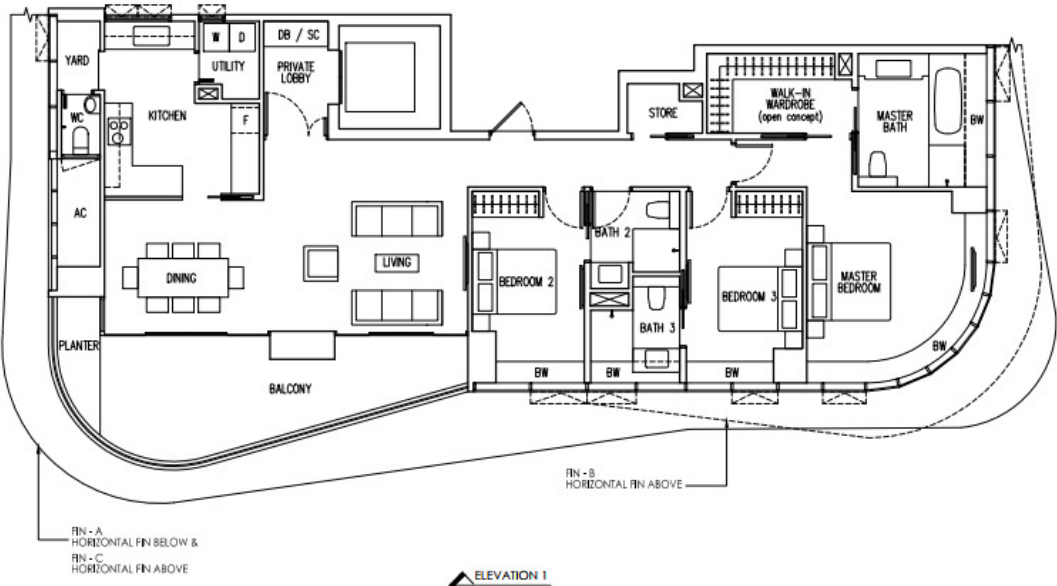
Type B1 (M)

170 sq m/ 1,830 sq ft

BLOCK 18	#07-06	#18-06	#29-06
	#09-06	#20-06	#32-06
	#11-06	#22-06	#34-06
	#13-06	#25-06	
	#16-06	#27-06	



ELEVATION 1
NOT TO SCALE

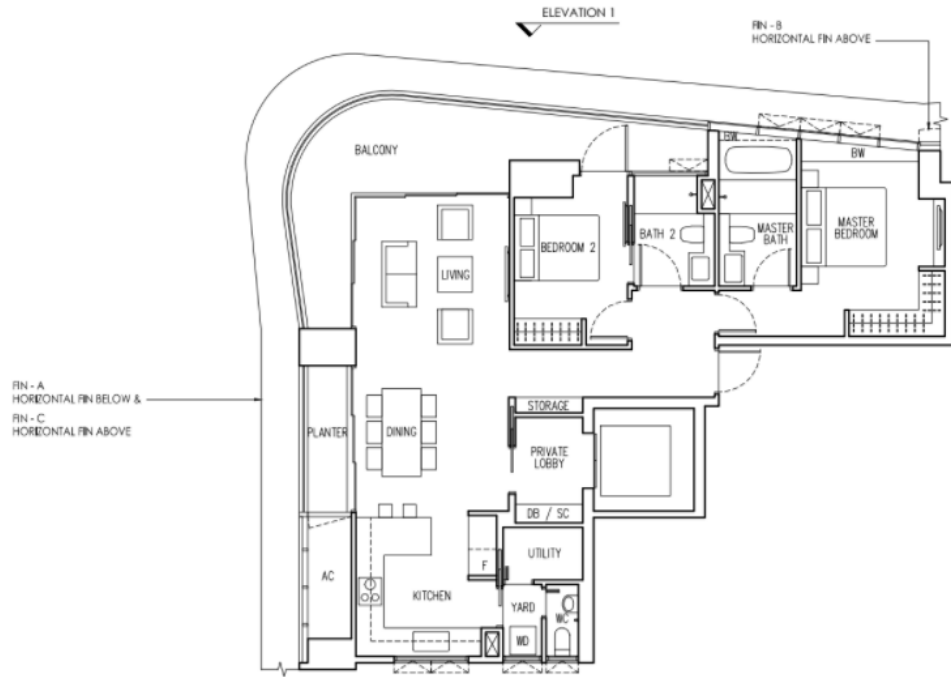
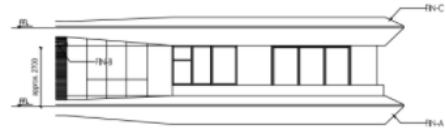


TWO-BEDROOM

Type A2 (M)

127 sq m/ 1,367 sq ft

BLOCK 18	#08-04
	#10-04
	#12-04



TWO-BEDROOM

Type A1a (M)

102 sq m/ 1,098 sq ft

BLOCK 18 | #09-05
#11-05
#13-05

