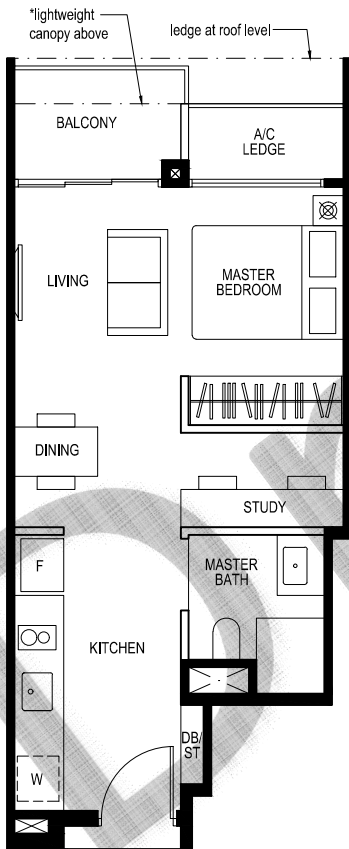


Type A1
 Studio + Study
 40 sq.m. / 431 sq.ft.

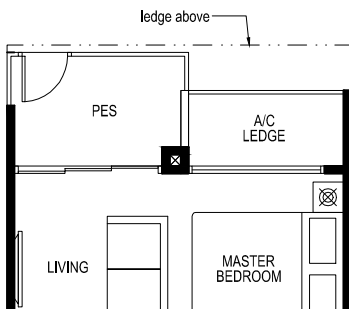
UNIT		
#06-02	#06-27	#06-36
#09-02	#09-27	#09-36
#12-02	#12-27	#12-36
#15-02	#15-27	#15-36



Type A1
 Studio + Study
 40 sq.m. / 431 sq.ft.

UNIT		
#07-02	#07-27	#07-36
#08-02	#08-27	#08-36
#10-02	#10-27	#10-36
#11-02	#11-27	#11-36
#13-02	#13-27	#13-36
#14-02	#14-27	#14-36
#16-02*	#16-27*	#16-36*

*Note: Units with lightweight canopy over balcony



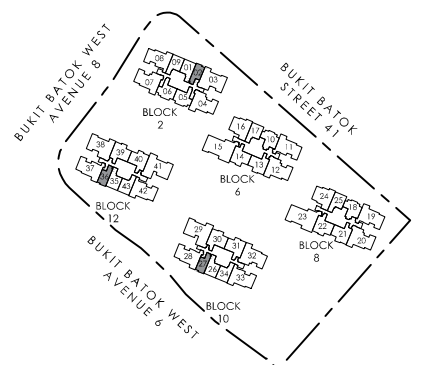
Type A1P
 Studio + Study
 40 sq.m. / 431 sq.ft.

UNIT		
#05-02	#05-27	#05-36

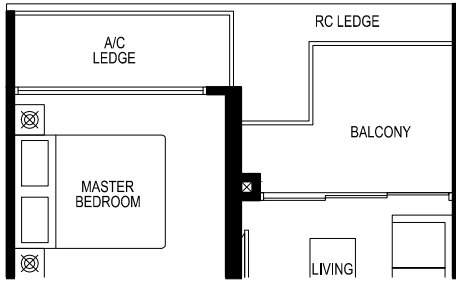
LEGEND:

Wall not to be hacked / altered (including by way of drilling)

The above plans and illustration are subject to change as may be required or approved by the relevant authorities. All areas stated herein include PES (private enclosed space), balcony, A/C ledge and void where applicable. All areas and measurements stated herein are approximate and subject to adjustment on final survey. Please refer to the key plan for orientation.



N
 KEY PLAN



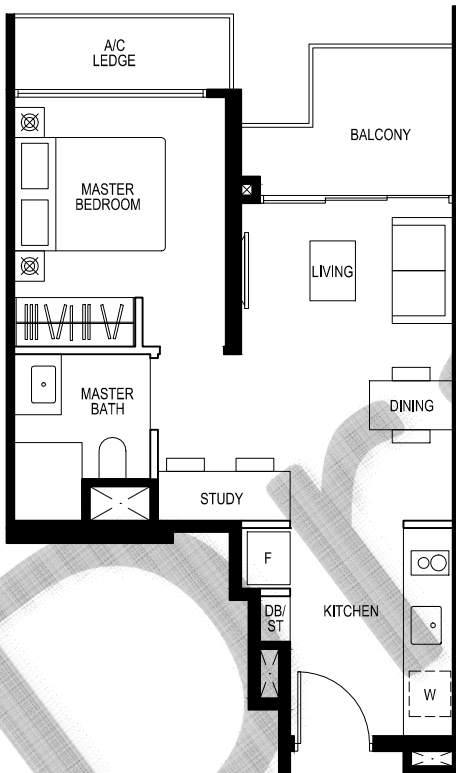
Type A2
1-Bedroom + Study
 46 sq.m. / 495 sq.ft.

UNIT

#06-01	#06-26	#06-35
#09-01	#09-26	#09-35
#12-01	#12-26	#12-35
#15-01	#15-26	#15-35

MIRRORED

#06-09	#06-17	#06-25	#06-34	#06-43
#09-09	#09-17	#09-25	#09-34	#09-43
#12-09	#12-17	#12-25	#12-34	#12-43
#15-09	#15-17	#15-25	#15-34	#15-43



Type A2
1-Bedroom + Study
 46 sq.m. / 495 sq.ft.

UNIT

#07-01	#07-26	#07-35
#08-01	#08-26	#08-35
#10-01	#10-26	#10-35
#11-01	#11-26	#11-35
#13-01	#13-26	#13-35
#14-01	#14-26	#14-35

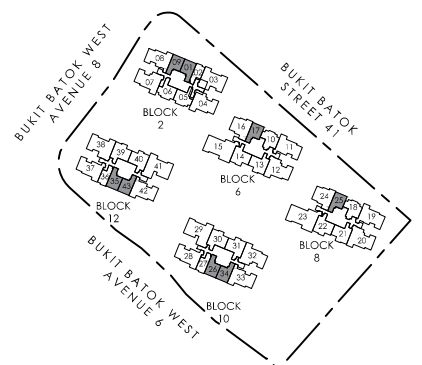
MIRRORED

#07-09	#07-17	#07-25	#07-34	#07-43
#08-09	#08-17	#08-25	#08-34	#08-43
#10-09	#10-17	#10-25	#10-34	#10-43
#11-09	#11-17	#11-25	#11-34	#11-43
#13-09	#13-17	#13-25	#13-34	#13-43
#14-09	#14-17	#14-25	#14-34	#14-43

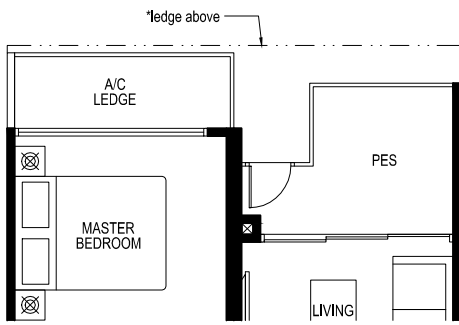
LEGEND:

■ Wall not to be hacked / altered (including by way of drilling)

The above plans and illustration are subject to change as may be required or approved by the relevant authorities. All areas stated herein include PES (private enclosed space), balcony, A/C ledge and void where applicable. All areas and measurements stated herein are approximate and subject to adjustment on final survey. Please refer to the key plan for orientation.



N
 KEY PLAN

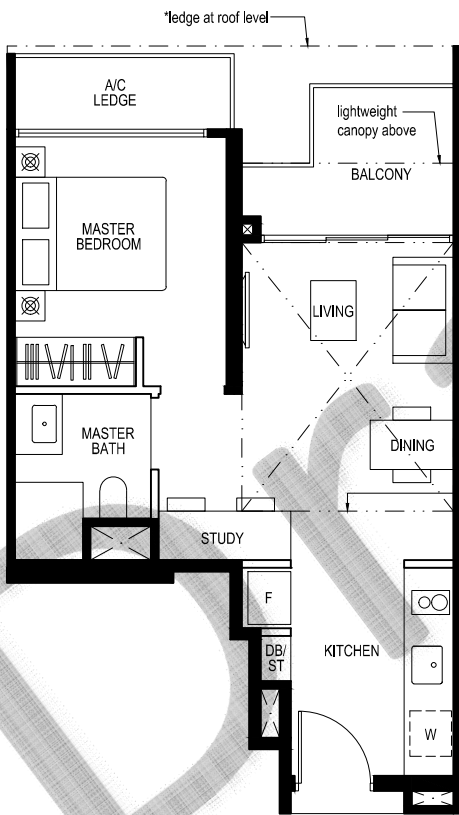


Type A2P
1-Bedroom + Study
 46 sq.m. / 495 sq.ft.

UNIT
 #05-01 #05-26 #05-35

MIRRORED
 #05-09* #05-17* #05-25* #05-34* #05-43*

*Note: Units with ledge above A/C ledge and PES



Type A2L
1-Bedroom + Study
 57 sq.m. / 614 sq.ft.

Including strata void area of 10.8 sq.m / 116 sq.ft above living and dining.
 Approximate 4.5m floor to ceiling height at living and dining.

UNIT
 #16-01 #16-26 #16-35

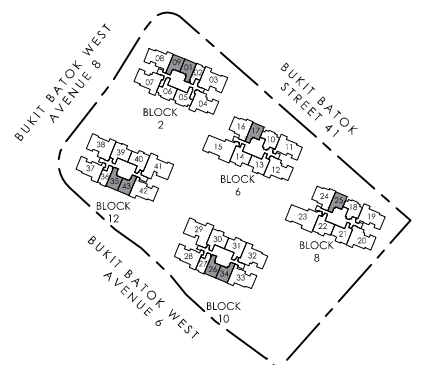
MIRRORED
 #16-09* #16-17* #16-25* #16-34* #16-43*

*Note: Units with ledge at roof level

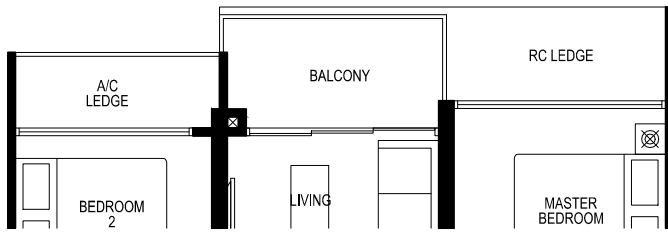
LEGEND:

■ Wall not to be hacked / altered (including by way of drilling)

The above plans and illustration are subject to change as may be required or approved by the relevant authorities. All areas stated herein include PES (private enclosed space), balcony, A/C ledge and void where applicable. All areas and measurements stated herein are approximate and subject to adjustment on final survey. Please refer to the key plan for orientation.

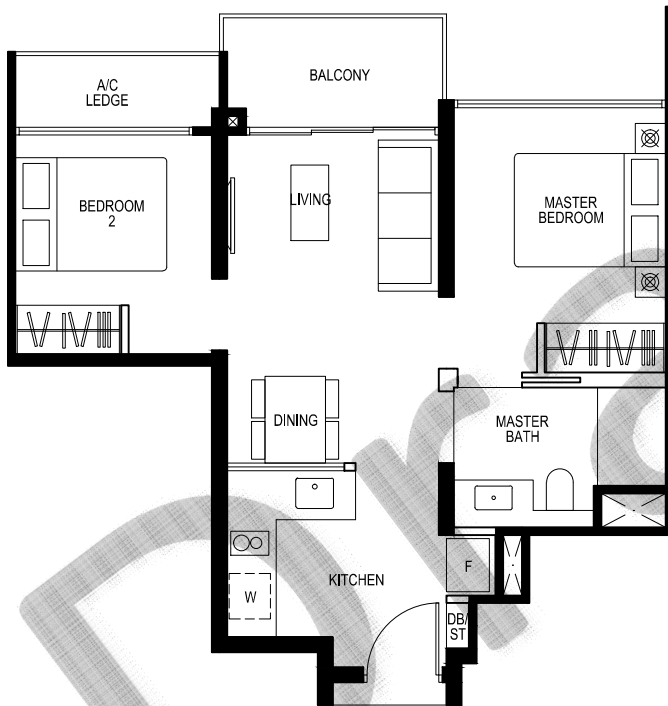


N
 KEY PLAN



Type B1
2-Bedroom
55 sq.m. / 592 sq.ft.

UNIT	
#06-10	#06-18
#09-10	#09-18
#12-10	#12-18
#15-10	#15-18



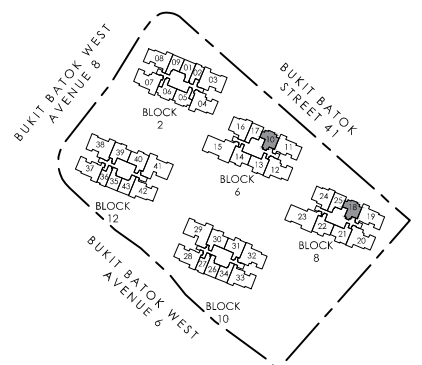
Type B1
2-Bedroom
55 sq.m. / 592 sq.ft.

UNIT	
#07-10	#07-18
#08-10	#08-18
#10-10	#10-18
#11-10	#11-18
#13-10	#13-18
#14-10	#14-18

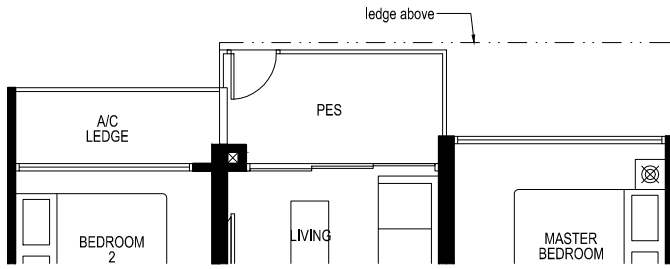
LEGEND:

Wall not to be hacked / altered (including by way of drilling)

The above plans and illustration are subject to change as may be required or approved by the relevant authorities. All areas stated herein include PES (private enclosed space), balcony, A/C ledge and void where applicable. All areas and measurements stated herein are approximate and subject to adjustment on final survey. Please refer to the key plan for orientation.

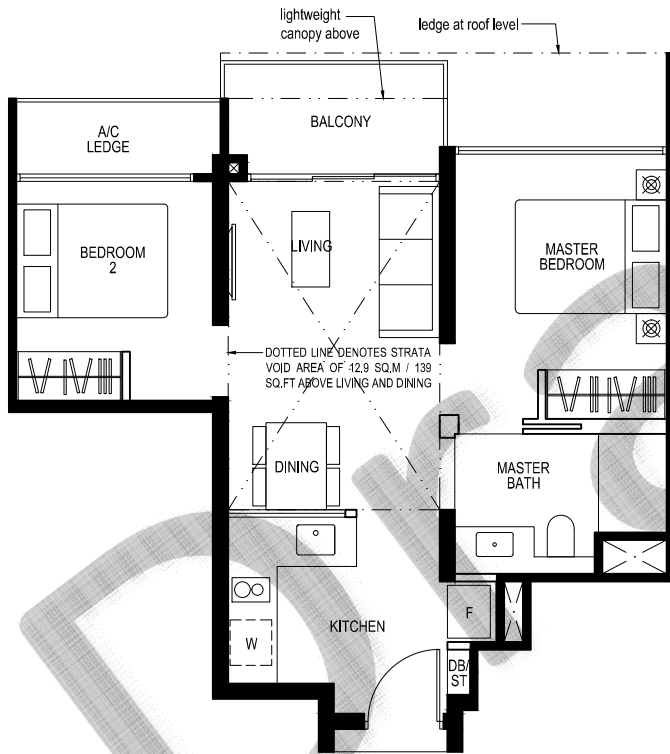


N
KEY PLAN



Type B1P
2-Bedroom
 55 sq.m. / 592 sq.ft.

UNIT
 #05-10 #05-18

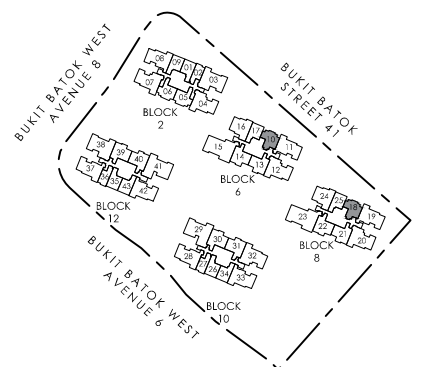


Type B1L
2-Bedroom
 68 sq.m. / 732 sq.ft.
 Including strata void area of 12.9 sq.m / 139 sq.ft above living and dining.
 Approximate 4.5m floor to ceiling height at living and dining.

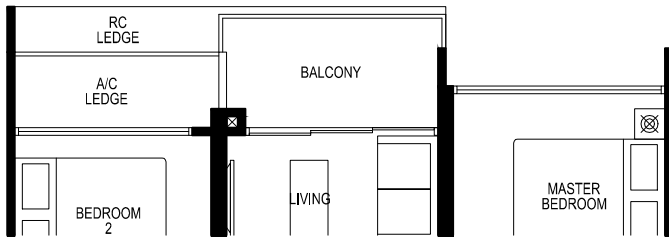
UNIT
 #16-10 #16-18

LEGEND:
 Wall not to be hacked / altered (including by way of drilling)

The above plans and illustration are subject to change as may be required or approved by the relevant authorities. All areas stated herein include PES (private enclosed space), balcony, A/C ledge and void where applicable. All areas and measurements stated herein are approximate and subject to adjustment on final survey. Please refer to the key plan for orientation.



KEY PLAN



Type B2
2-Bedroom
57 sq.m. / 614 sq.ft.

- UNIT
#06-05
#09-05
#12-05
#15-05

- MIRRORED
#06-06
#09-06
#12-06
#15-06



Type B2
2-Bedroom
57 sq.m. / 614 sq.ft.

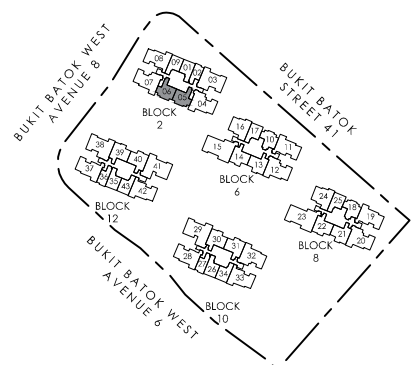
- UNIT
#07-05
#08-05
#10-05
#11-05
#13-05
#14-05

- MIRRORED
#07-06
#08-06
#10-06
#11-06
#13-06
#14-06

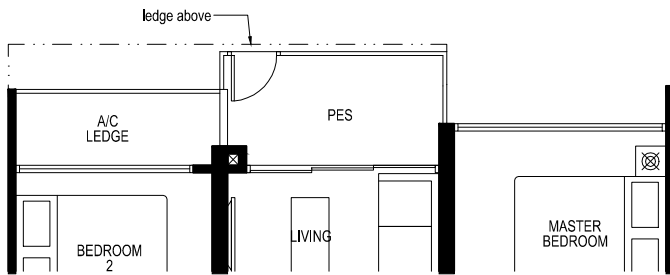
LEGEND:

Wall not to be hacked / altered (including by way of drilling)

The above plans and illustration are subject to change as may be required or approved by the relevant authorities. All areas stated herein include PES (private enclosed space), balcony, A/C ledge and void where applicable. All areas and measurements stated herein are approximate and subject to adjustment on final survey. Please refer to the key plan for orientation.



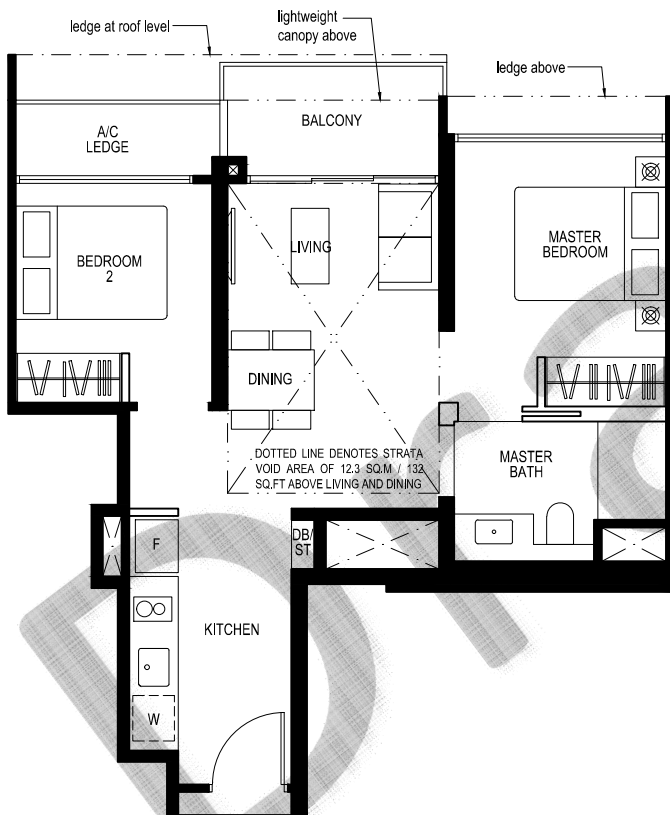
N
KEY PLAN



Type B2P
2-Bedroom
 57 sq.m. / 614 sq.ft.

UNIT
 #05-05

MIRRORED
 #05-06



Type B2L
2-Bedroom
 69 sq.m. / 743 sq.ft.

Including strata void area of 12.3 sqm / 132 sqft above living and dining.
 Approximate 4.5m floor to ceiling height at living and dining.

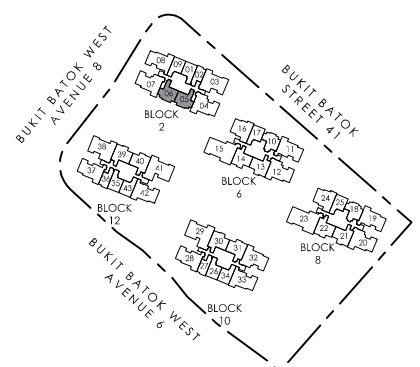
UNIT
 #16-05

MIRRORED
 #16-06

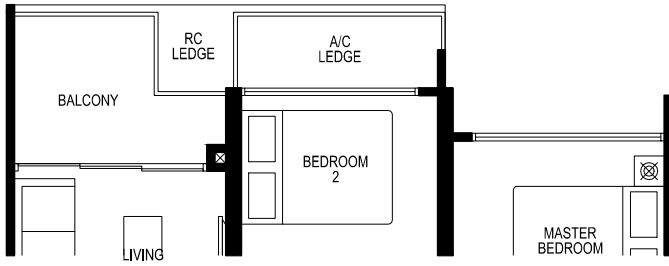
LEGEND:

Wall not to be hacked / altered (including by way of drilling)

The above plans and illustration are subject to change as may be required or approved by the relevant authorities. All areas stated herein include PES (private enclosed space), balcony, A/C ledge and void where applicable. All areas and measurements stated herein are approximate and subject to adjustment on final survey. Please refer to the key plan for orientation.



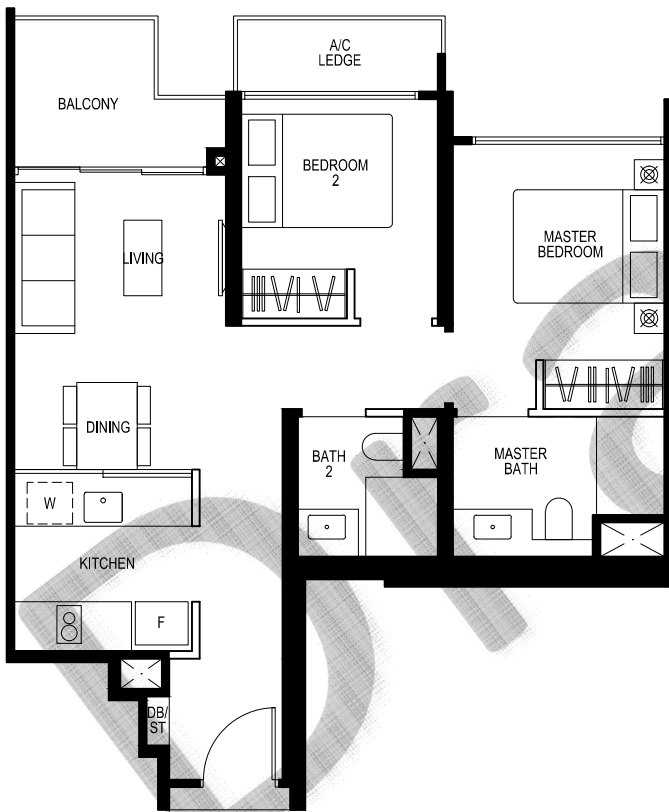
KEY PLAN



Type B3
2-Bedroom Premium
65 sq.m. / 700 sq.ft.

UNIT	
#06-30	#06-39
#09-30	#09-39
#12-30	#12-39
#15-30	#15-39

MIRRORED		
#06-22	#06-31	#06-40
#09-22	#09-31	#09-40
#12-22	#12-31	#12-40
#15-22	#15-31	#15-40



Type B3
2-Bedroom Premium
65 sq.m. / 700 sq.ft.

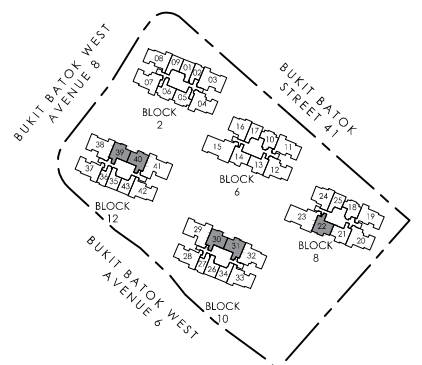
UNIT	
#07-30	#07-39
#08-30	#08-39
#10-30	#10-39
#11-30	#11-39
#13-30	#13-39
#14-30	#14-39

MIRRORED		
#07-22	#07-31	#07-40
#08-22	#08-31	#08-40
#10-22	#10-31	#10-40
#11-22	#11-31	#11-40
#13-22	#13-31	#13-40
#14-22	#14-31	#14-40

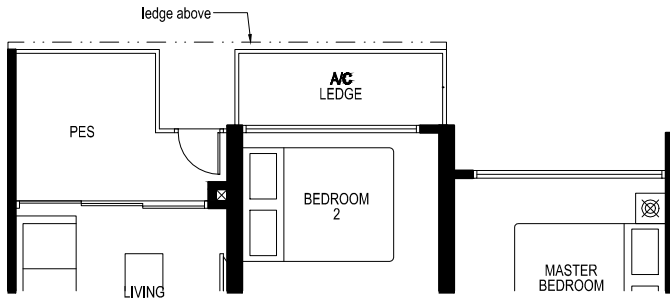
LEGEND:

Wall not to be hacked / altered (including by way of drilling)

The above plans and illustration are subject to change as may be required or approved by the relevant authorities. All areas stated herein include PES (private enclosed space), balcony, A/C ledge and void where applicable. All areas and measurements stated herein are approximate and subject to adjustment on final survey. Please refer to the key plan for orientation.



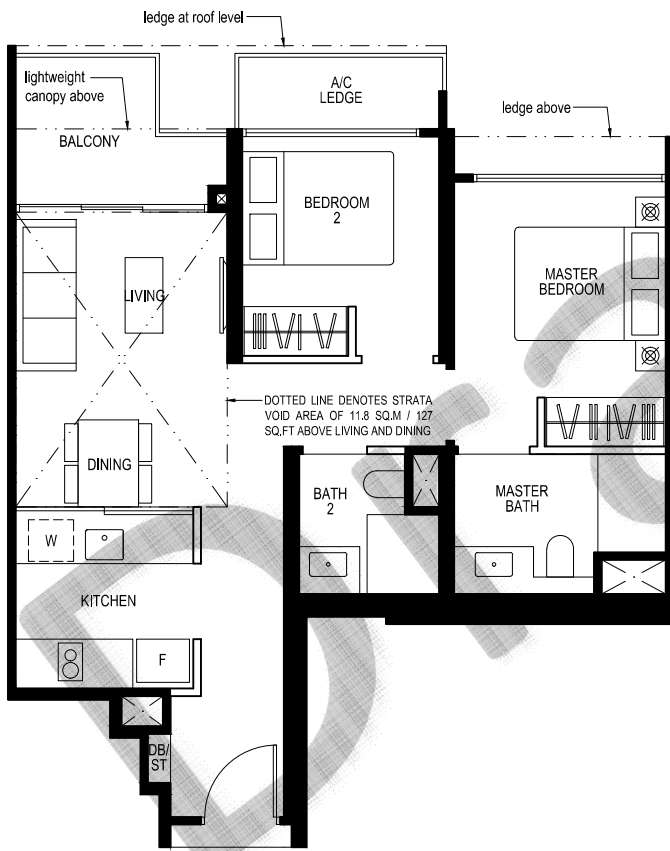
N
KEY PLAN



Type B3P
2-Bedroom Premium

65 sq.m. / 700 sq.ft.

UNIT	#05-30	#05-39
MIRRORED	#05-22	#05-31 #05-40



Type B3L
2-Bedroom Premium

77 sq.m. / 829 sq.ft.

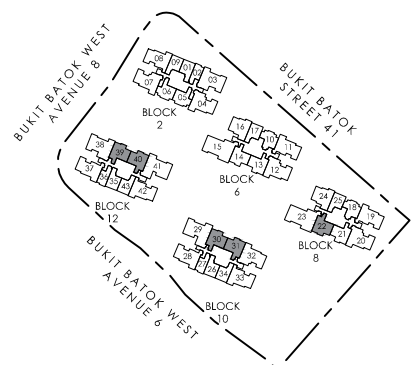
Including strata void area of 11.8 sq.m / 127 sq.ft above living and dining.
Approximate 4.5m floor to ceiling height at living and dining.

UNIT	#16-30	#16-39
MIRRORED	#016-22	#16-31 #16-40

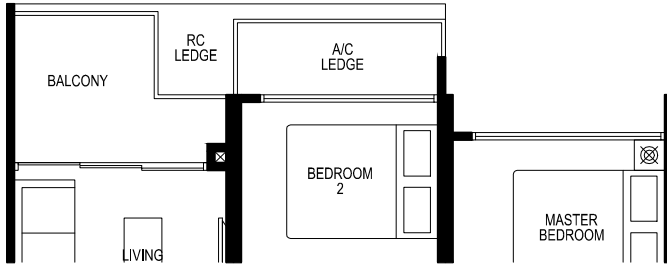
LEGEND:

Wall not to be hacked / altered (including by way of drilling)

The above plans and illustration are subject to change as may be required or approved by the relevant authorities. All areas stated herein include PES (private enclosed space), balcony, A/C ledge and void where applicable. All areas and measurements stated herein are approximate and subject to adjustment on final survey. Please refer to the key plan for orientation.



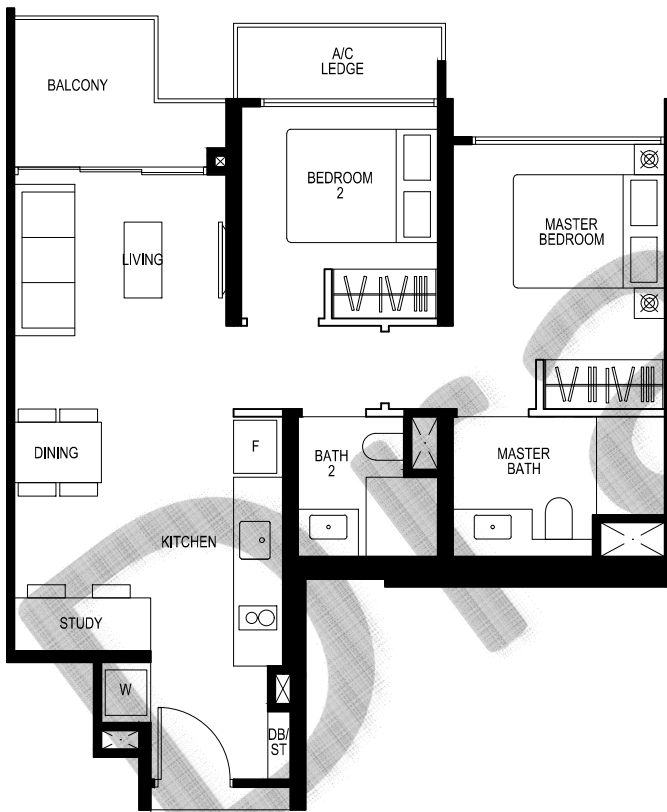
KEY PLAN



Type B4
 2-Bedroom Deluxe + Study
 66 sq.m. / 710 sq.ft.

- UNIT
- | | |
|--------|--------|
| #06-13 | #06-21 |
| #09-13 | #09-21 |
| #12-13 | #12-21 |
| #15-13 | #15-21 |

- MIRRORED
- #06-14
 - #09-14
 - #12-14
 - #15-14



Type B4
 2-Bedroom Deluxe + Study
 66 sq.m. / 710 sq.ft.

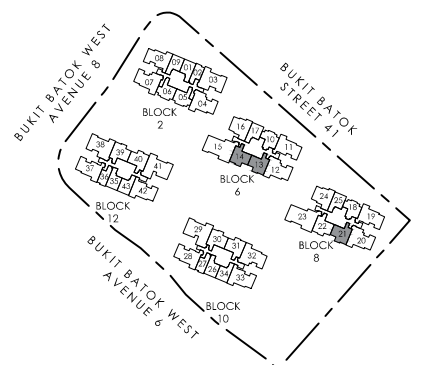
- UNIT
- | | |
|--------|--------|
| #07-13 | #07-21 |
| #08-13 | #08-21 |
| #10-13 | #10-21 |
| #11-13 | #11-21 |
| #13-13 | #13-21 |
| #14-13 | #14-21 |

- MIRRORED
- #07-14
 - #08-14
 - #10-14
 - #11-14
 - #13-14
 - #14-14

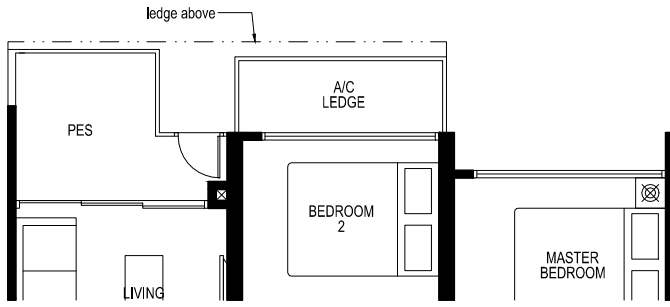
LEGEND:

■ Wall not to be hacked / altered (including by way of drilling)

The above plans and illustration are subject to change as may be required or approved by the relevant authorities. All areas stated herein include PES (private enclosed space), balcony, A/C ledge and void where applicable. All areas and measurements stated herein are approximate and subject to adjustment on final survey. Please refer to the key plan for orientation.



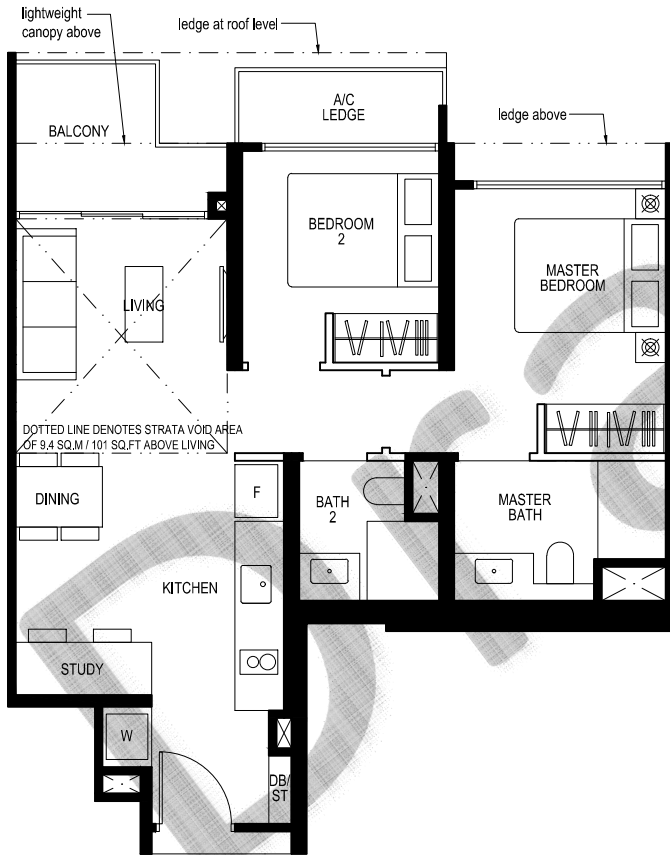
N
 KEY PLAN



Type B4P
2-Bedroom Deluxe + Study
 66 sq.m. / 710 sq.ft.

UNIT
 #05-13 #05-21

MIRRORED
 #05-14



Type B4L
2-Bedroom Deluxe + Study
 75 sq.m. / 807 sq.ft.

Including strata void area of 9.4 sq.m / 101 sq.ft above living.
 Approximate 4.5m floor to ceiling height at living.

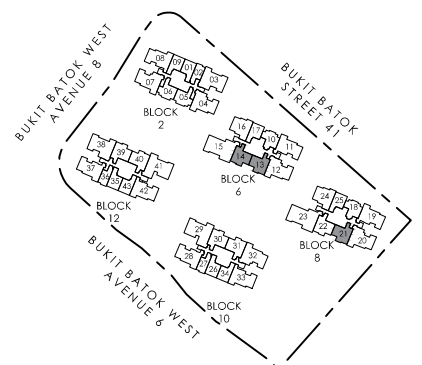
UNIT
 #16-13 #16-21

MIRRORED
 #16-14

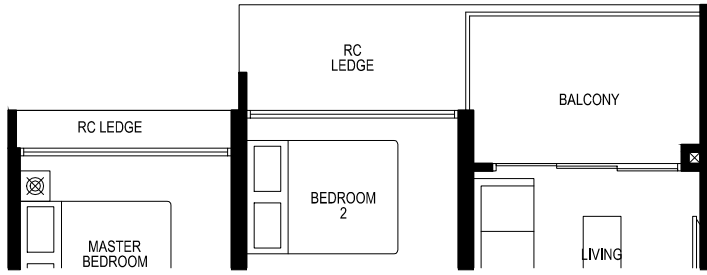
LEGEND:

Wall not to be hacked / altered (including by way of drilling)

The above plans and illustration are subject to change as may be required or approved by the relevant authorities. All areas stated herein include PES (private enclosed space), balcony, A/C ledge and void where applicable. All areas and measurements stated herein are approximate and subject to adjustment on final survey. Please refer to the key plan for orientation.

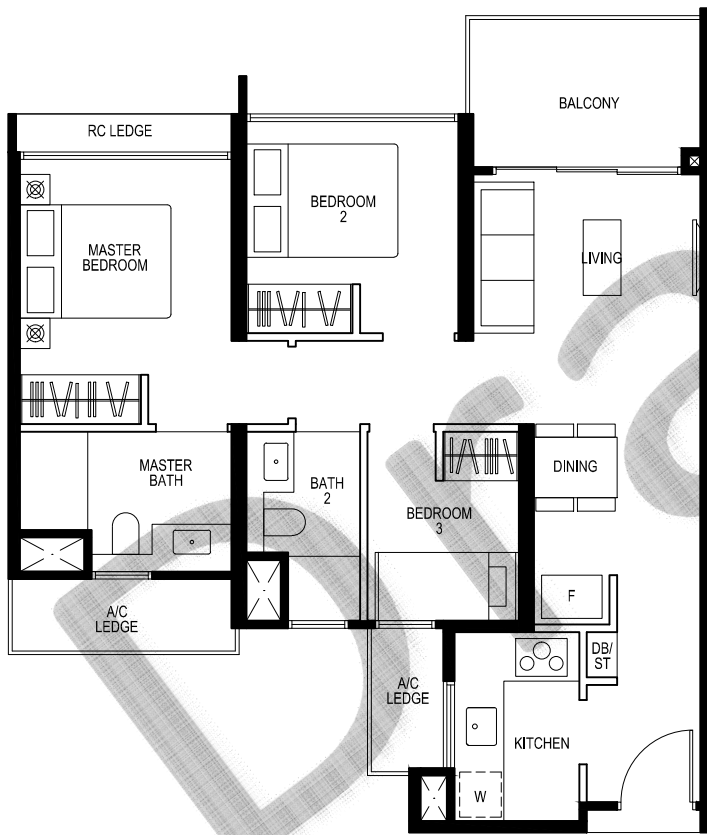


N
KEY PLAN



Type C1
3-Bedroom
 76 sq.m. / 818 sq.ft.

UNIT	
#06-16	#06-24
#09-16	#09-24
#12-16	#12-24
#15-16	#15-24



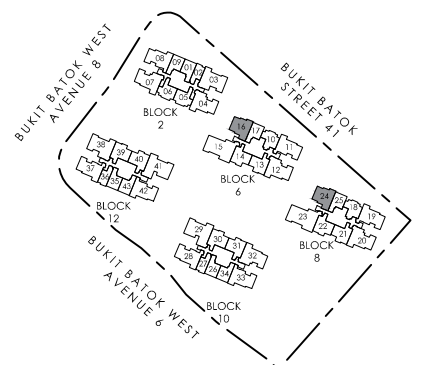
Type C1
3-Bedroom
 76 sq.m. / 818 sq.ft.

UNIT	
#07-16	#07-24
#08-16	#08-24
#10-16	#10-24
#11-16	#11-24
#13-16	#13-24
#14-16	#14-24

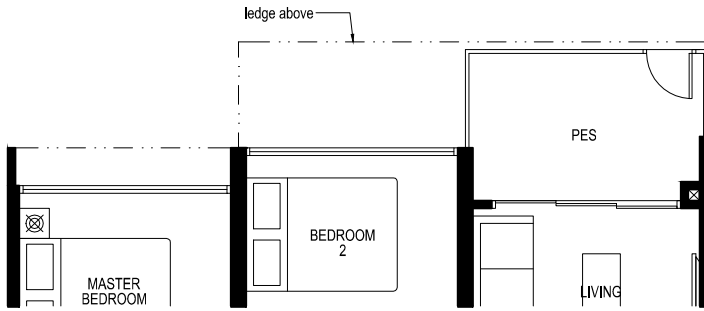
LEGEND:

 Wall not to be hacked / altered (including by way of drilling)

The above plans and illustration are subject to change as may be required or approved by the relevant authorities. All areas stated herein include PES (private enclosed space), balcony, A/C ledge and void where applicable. All areas and measurements stated herein are approximate and subject to adjustment on final survey. Please refer to the key plan for orientation.

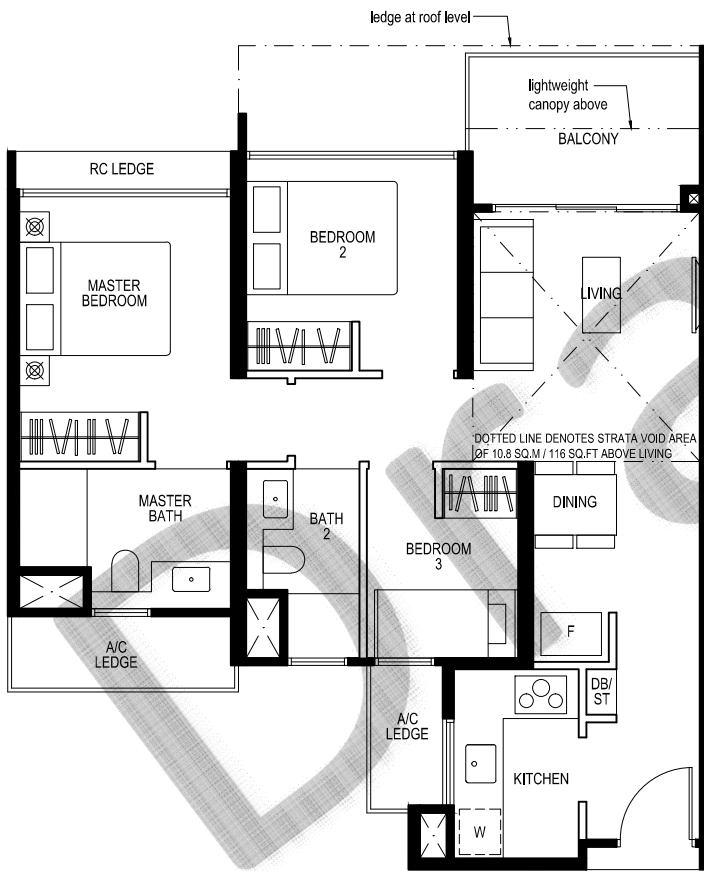


 **KEY PLAN**



Type C1P
3-Bedroom
 76 sq.m. / 818 sq.ft.

UNIT #05-16 #05-24

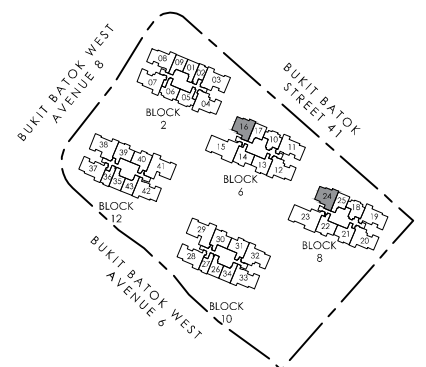


Type C1L
3-Bedroom
 87 sq.m. / 936 sq.ft.
 Including strata void area of 10.8 sq.m / 116 sq.ft above living.
 Approximate 4.5m floor to ceiling height at living.

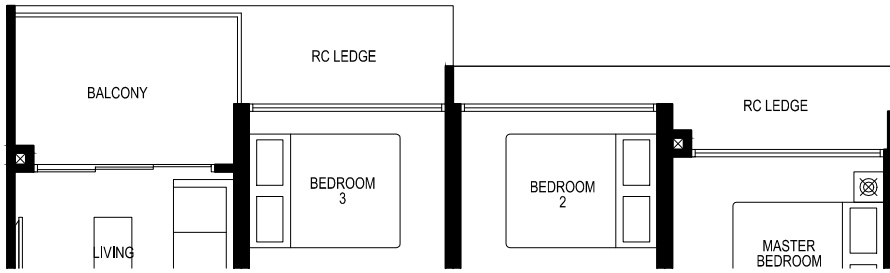
UNIT #16-16 #16-24

LEGEND:
 Wall not to be hacked / altered (including by way of drilling)

The above plans and illustration are subject to change as may be required or approved by the relevant authorities. All areas stated herein include PES (private enclosed space), balcony, A/C ledge and void where applicable. All areas and measurements stated herein are approximate and subject to adjustment on final survey. Please refer to the key plan for orientation.

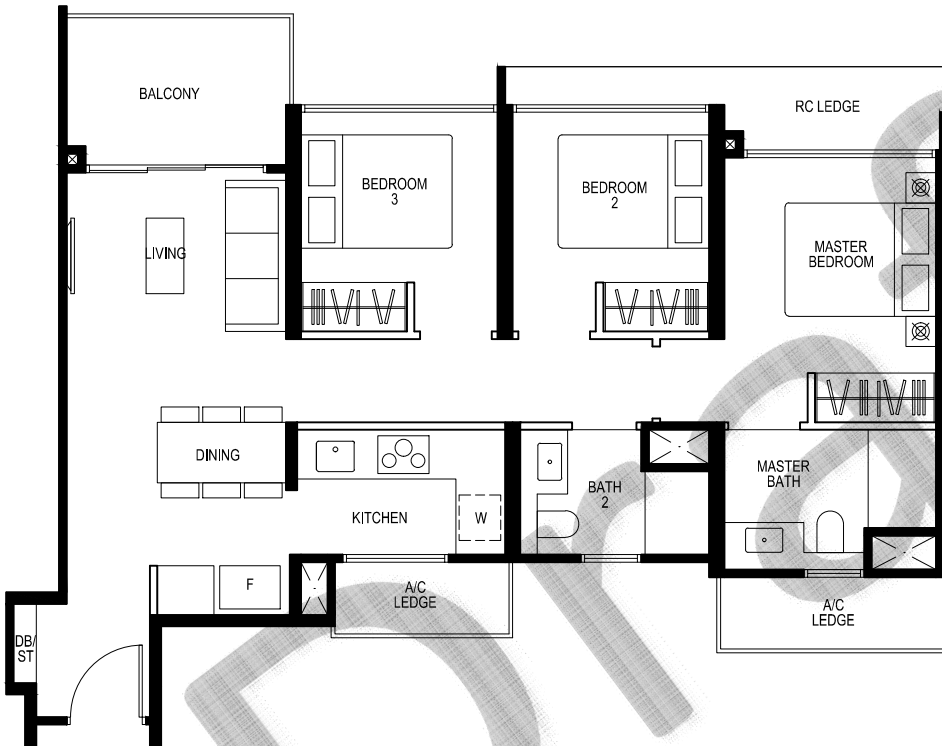


KEY PLAN



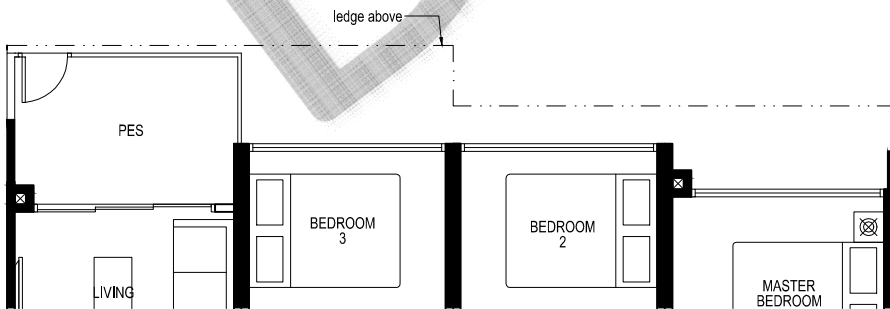
Type C2
3-Bedroom Suite
82 sq.m. / 883 sq.ft.

UNIT			
#06-11	#06-19	#06-28	#06-37
#09-11	#09-19	#09-28	#09-37



Type C2
3-Bedroom Suite
82 sq.m. / 883 sq.ft.

UNIT			
#07-11	#07-19	#07-28	#07-37
#08-11	#08-19	#08-28	#08-37
#10-11	#10-19	#10-28	#10-37

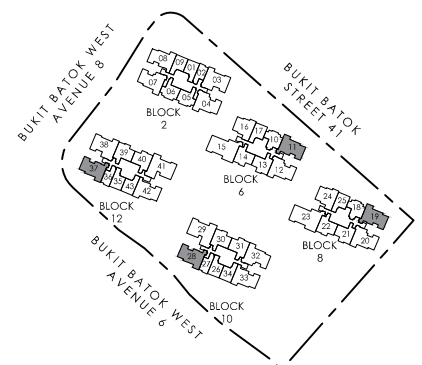


Type C2P
3-Bedroom Suite
82 sq.m. / 883 sq.ft.

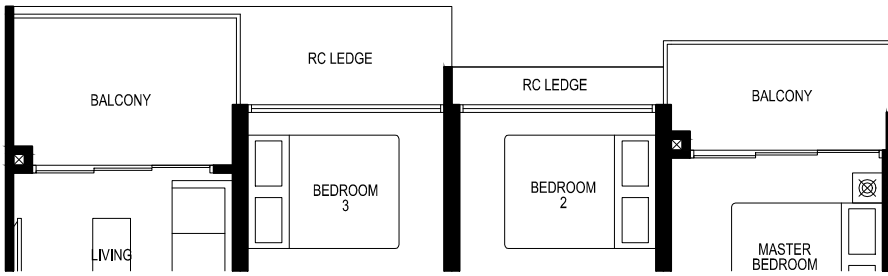
UNIT			
#05-11	#05-19	#05-28	#05-37

LEGEND:
 Wall not to be hacked / altered (including by way of drilling)

The above plans and illustration are subject to change as may be required or approved by the relevant authorities. All areas stated herein include PES (private enclosed space), balcony, A/C ledge and void where applicable. All areas and measurements stated herein are approximate and subject to adjustment on final survey. Please refer to the key plan for orientation.

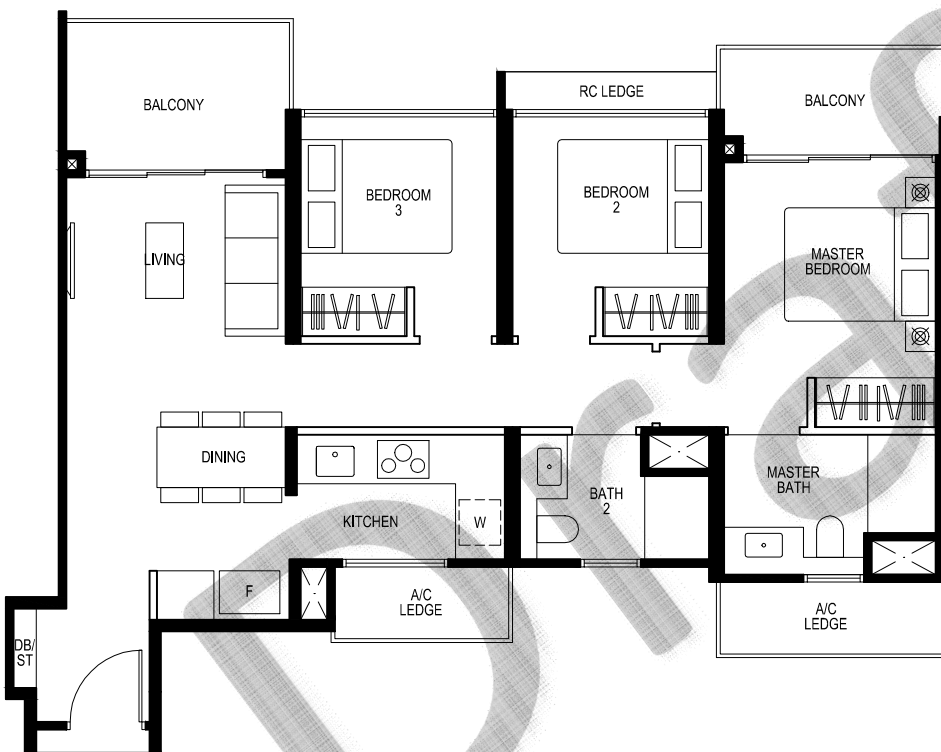


N
 KEY PLAN



Type C3
3-Bedroom Premium
87 sq.m. / 936 sq.ft.

UNIT	#12-11	#12-19	#12-28	#12-37
	#15-11	#15-19	#15-28	#15-37



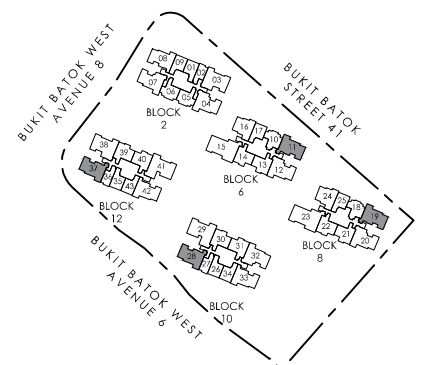
Type C3
3-Bedroom Premium
87 sq.m. / 936 sq.ft.

UNIT	#11-11	#11-19	#11-28	#11-37
	#13-11	#13-19	#13-28	#13-37
	#14-11	#14-19	#14-28	#14-37

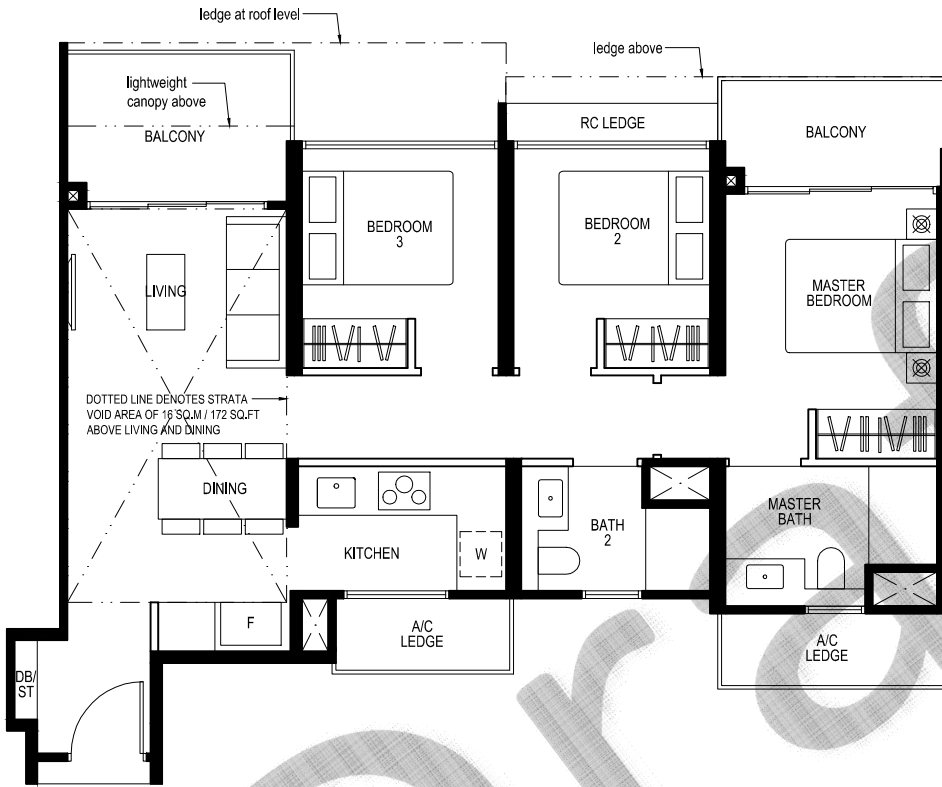
LEGEND:

■ Wall not to be hacked / altered (including by way of drilling)

The above plans and illustration are subject to change as may be required or approved by the relevant authorities. All areas stated herein include PES (private enclosed space), balcony, A/C ledge and void where applicable. All areas and measurements stated herein are approximate and subject to adjustment on final survey. Please refer to the key plan for orientation.



N
KEY PLAN



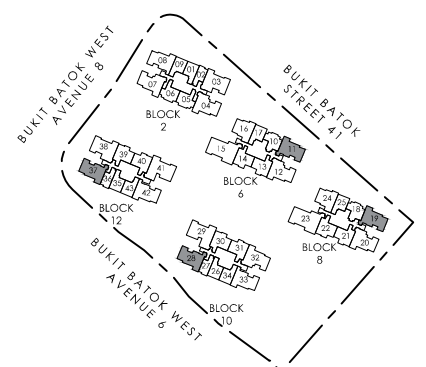
Type C3L
3-Bedroom Premium

103 sq.m. / 1109 sq.ft.
 Including strata void area of 16.0 sq.m / 172 sq.ft above living and dining.
 Approximate 4.5m floor to ceiling height at living and dining.

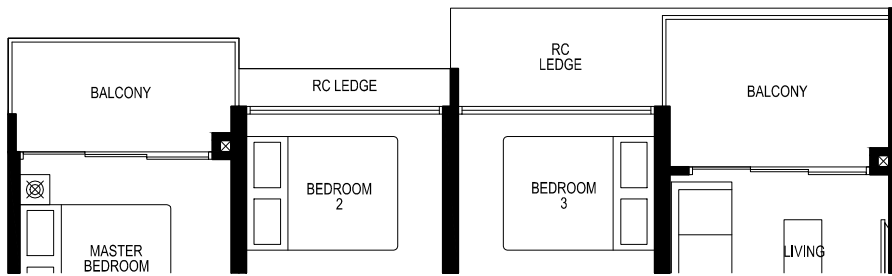
UNIT	#16-11	#16-19	#16-28	#16-37
------	--------	--------	--------	--------

LEGEND:
 Wall not to be hacked / altered (including by way of drilling)

The above plans and illustration are subject to change as may be required or approved by the relevant authorities. All areas stated herein include PES (private enclosed space), balcony, A/C ledge and void where applicable. All areas and measurements stated herein are approximate and subject to adjustment on final survey. Please refer to the key plan for orientation.

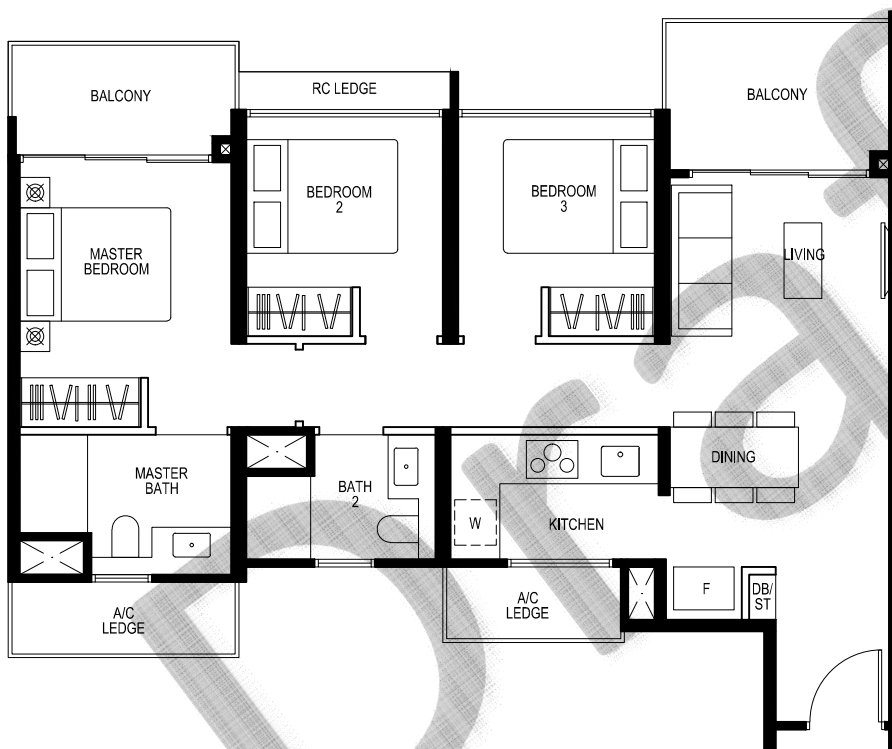


N
KEY PLAN



Type C4
3-Bedroom Premium
 87 sq.m. / 936 sq.ft.

UNIT		
#06-08	#06-33	#06-42
#09-08	#09-33	#09-42
#12-08	#12-33	#12-42
#15-08	#15-33	#15-42



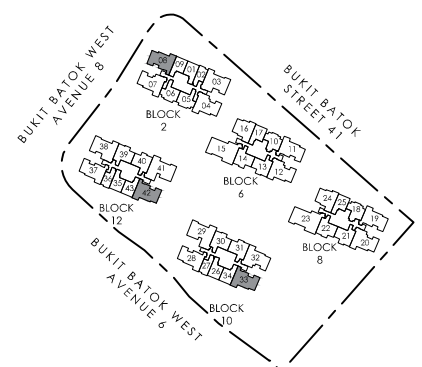
Type C4
3-Bedroom Premium
 87 sq.m. / 936 sq.ft.

UNIT		
#07-08	#07-33	#07-42
#08-08	#08-33	#08-42
#10-08	#10-33	#10-42
#11-08	#11-33	#11-42
#13-08	#13-33	#13-42
#14-08	#14-33	#14-42

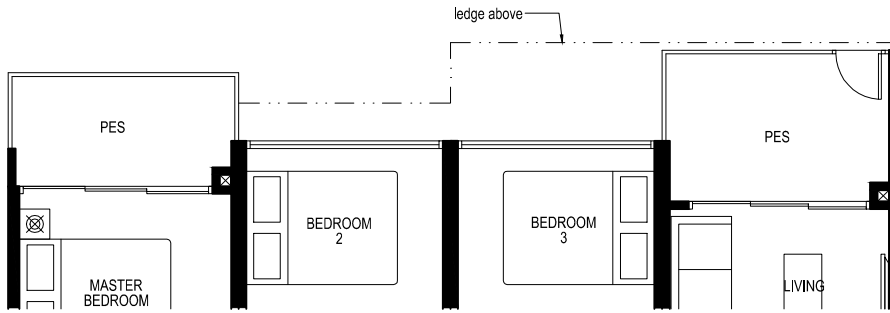
LEGEND:

■ Wall not to be hacked / altered (including by way of drilling)

The above plans and illustration are subject to change as may be required or approved by the relevant authorities. All areas stated herein include PES (private enclosed space), balcony, A/C ledge and void where applicable. All areas and measurements stated herein are approximate and subject to adjustment on final survey. Please refer to the key plan for orientation.

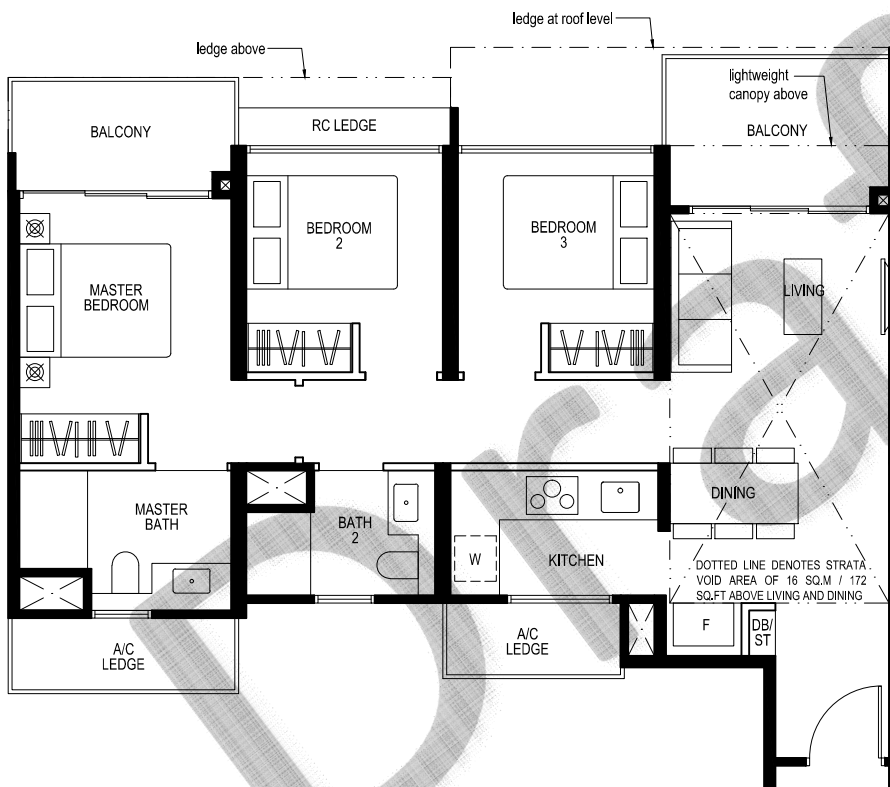


N
 KEY PLAN



Type C4P
3-Bedroom Premium
 87 sq.m. / 936 sq.ft.

UNIT
 #05-08 #05-33 #05-42



Type C4L
3-Bedroom Premium
 103 sq.m. / 1109 sq.ft.

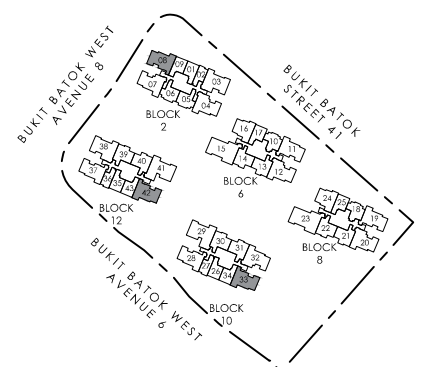
Including strata void area of 16 sq.m / 172 sq.ft above living and dining.
 Approximate 4.5m floor to ceiling height at living and dining.

UNIT
 #16-08 #16-33 #16-42

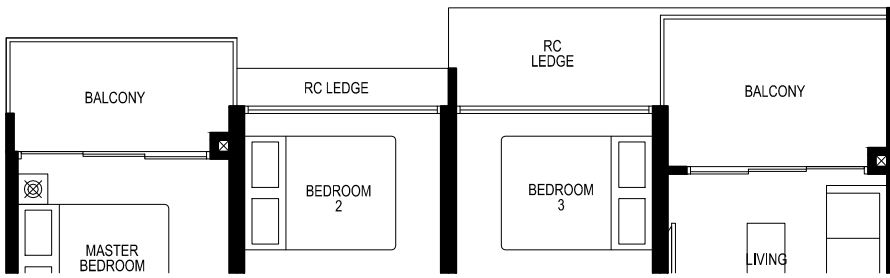
LEGEND:

Wall not to be hacked / altered (including by way of drilling)

The above plans and illustration are subject to change as may be required or approved by the relevant authorities. All areas stated herein include PES (private enclosed space), balcony, A/C ledge and void where applicable. All areas and measurements stated herein are approximate and subject to adjustment on final survey. Please refer to the key plan for orientation.



KEY PLAN



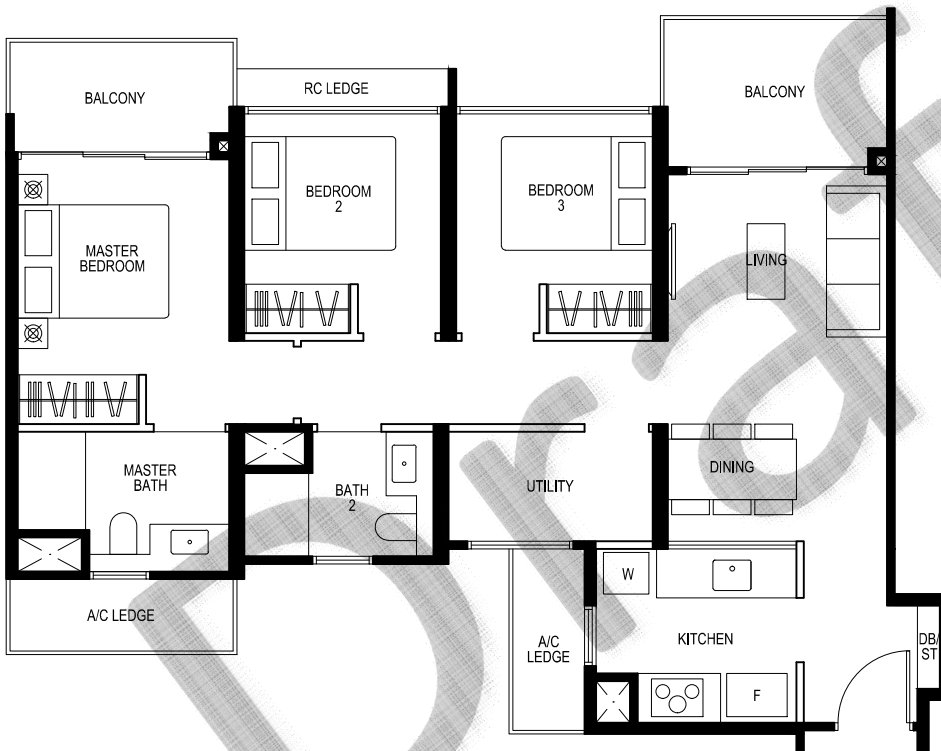
Type C5
3-Bedroom Deluxe
 91 sq.m. / 980 sq.ft.

UNIT

#06-04	#06-12	#06-20
#09-04	#09-12	#09-20
#12-04	#12-12	#12-20
#15-04	#15-12	#15-20

MIRRORED

#06-07	#06-32
#09-07	#09-32
#12-07	#12-32
#15-07	#15-32



Type C5
3-Bedroom Deluxe
 91 sq.m. / 980 sq.ft.

UNIT

#07-04	#07-12	#07-20
#08-04	#08-12	#08-20
#10-04	#10-12	#10-20
#11-04	#11-12	#11-20
#13-04	#13-12	#13-20
#14-04	#14-12	#14-20

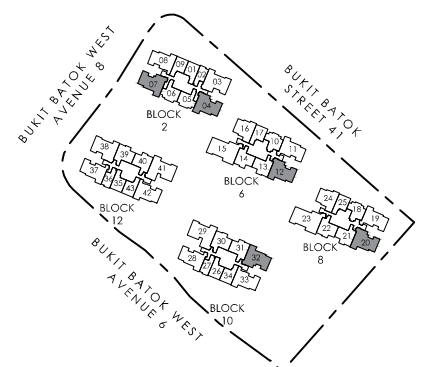
MIRRORED

#07-07	#07-32
#08-07	#08-32
#10-07	#10-32
#11-07	#11-32
#13-07	#13-32
#14-07	#14-32

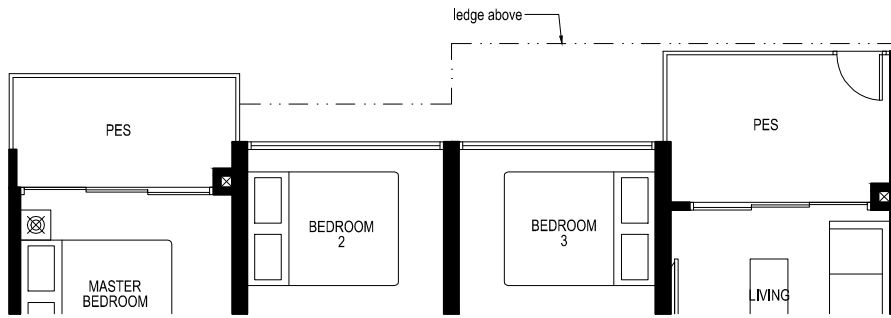
LEGEND:

Wall not to be hacked / altered (including by way of drilling)

The above plans and illustration are subject to change as may be required or approved by the relevant authorities. All areas stated herein include PES (private enclosed space), balcony, A/C ledge and void where applicable. All areas and measurements stated herein are approximate and subject to adjustment on final survey. Please refer to the key plan for orientation.

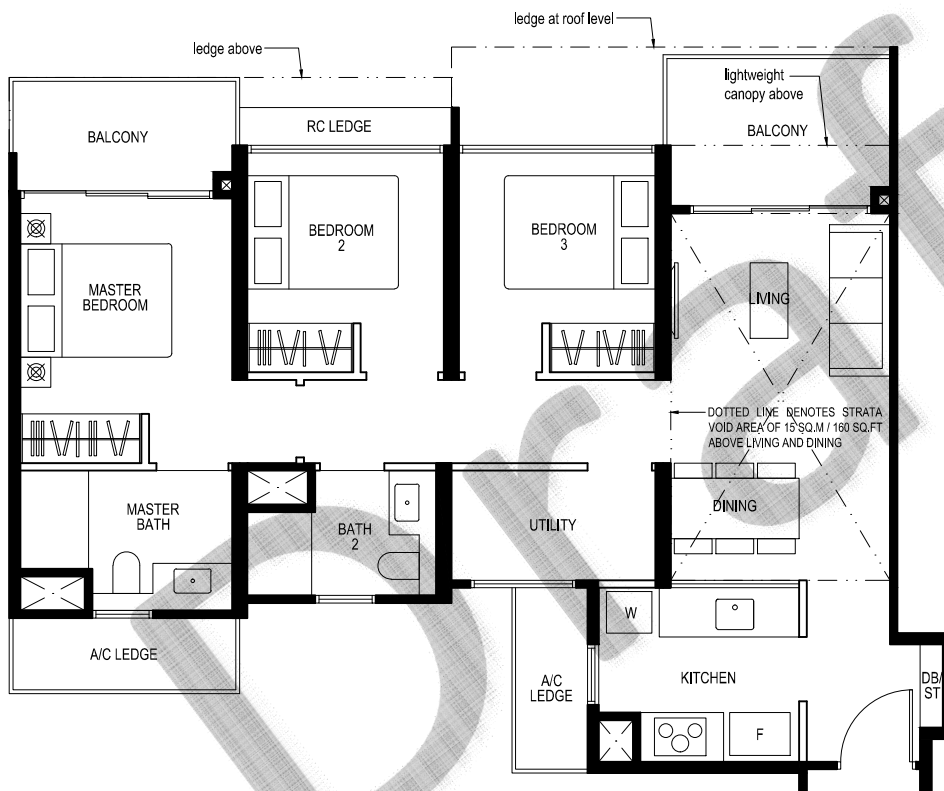


KEY PLAN



Type C5P
3-Bedroom Deluxe
 91 sq.m. / 980 sq.ft.

UNIT
 #05-04 #05-12 #05-20
 MIRRORED
 #05-07 #05-32



Type C5L
3-Bedroom Deluxe
 106 sq.m. / 1141 sq.ft.

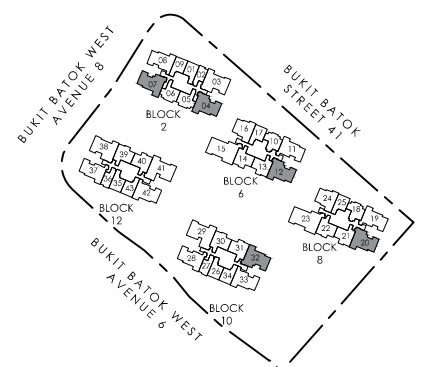
Including strata void area of 15 sq.m / 161 sq.ft above living and dining.
 Approximate 4.5m floor to ceiling height at living and dining.

UNIT
 #16-04 #16-12 #16-20
 MIRRORED
 #16-07 #16-32

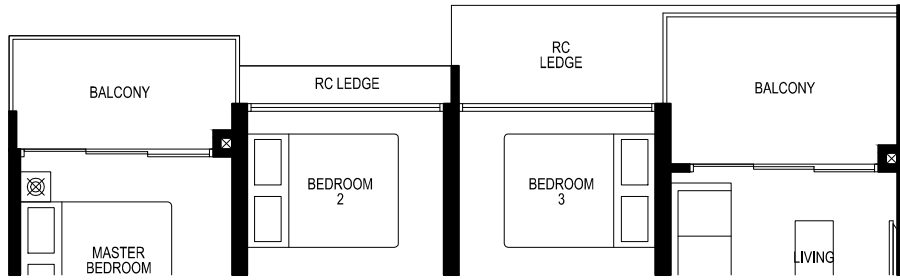
LEGEND:

■ Wall not to be hacked / altered (including by way of drilling)

The above plans and illustration are subject to change as may be required or approved by the relevant authorities. All areas stated herein include PES (private enclosed space), balcony, A/C ledge and void where applicable. All areas and measurements stated herein are approximate and subject to adjustment on final survey. Please refer to the key plan for orientation.



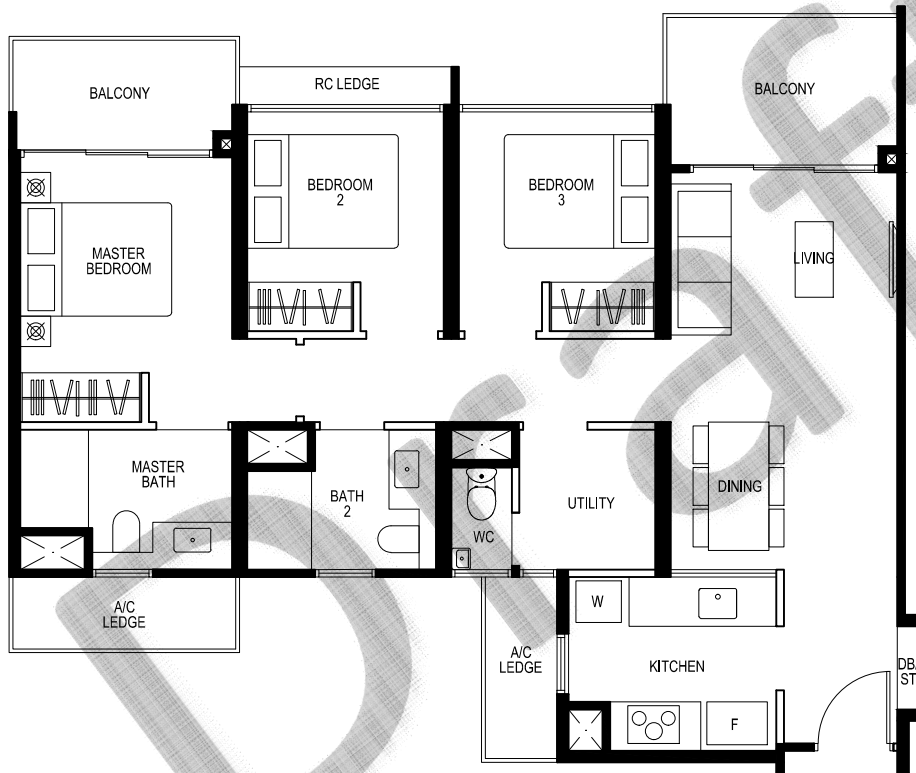
N
 KEY PLAN



Type C6
3-Bedroom Deluxe
 95 sq.m. / 1023 sq.ft.

UNIT
 #06-38
 #09-38
 #12-38
 #15-38

MIRRORED
 #06-03
 #09-03
 #12-03
 #15-03



Type C6
3-Bedroom Deluxe
 95 sq.m. / 1023 sq.ft.

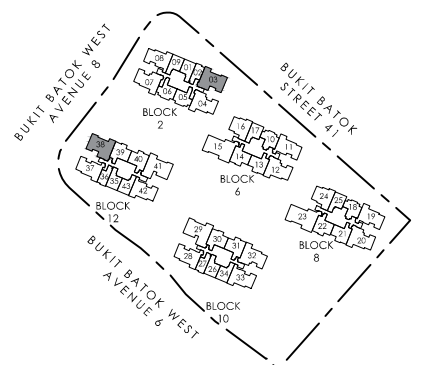
UNIT
 #07-38
 #08-38
 #10-38
 #11-38
 #13-38
 #14-38

MIRRORED
 #07-03
 #08-03
 #10-03
 #11-03
 #13-03
 #14-03

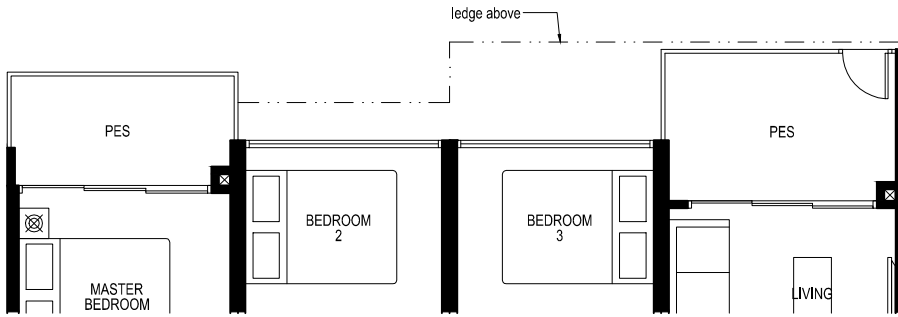
LEGEND:

■ Wall not to be hacked / altered (including by way of drilling)

The above plans and illustration are subject to change as may be required or approved by the relevant authorities. All areas stated herein include PES (private enclosed space), balcony, A/C ledge and void where applicable. All areas and measurements stated herein are approximate and subject to adjustment on final survey. Please refer to the key plan for orientation.



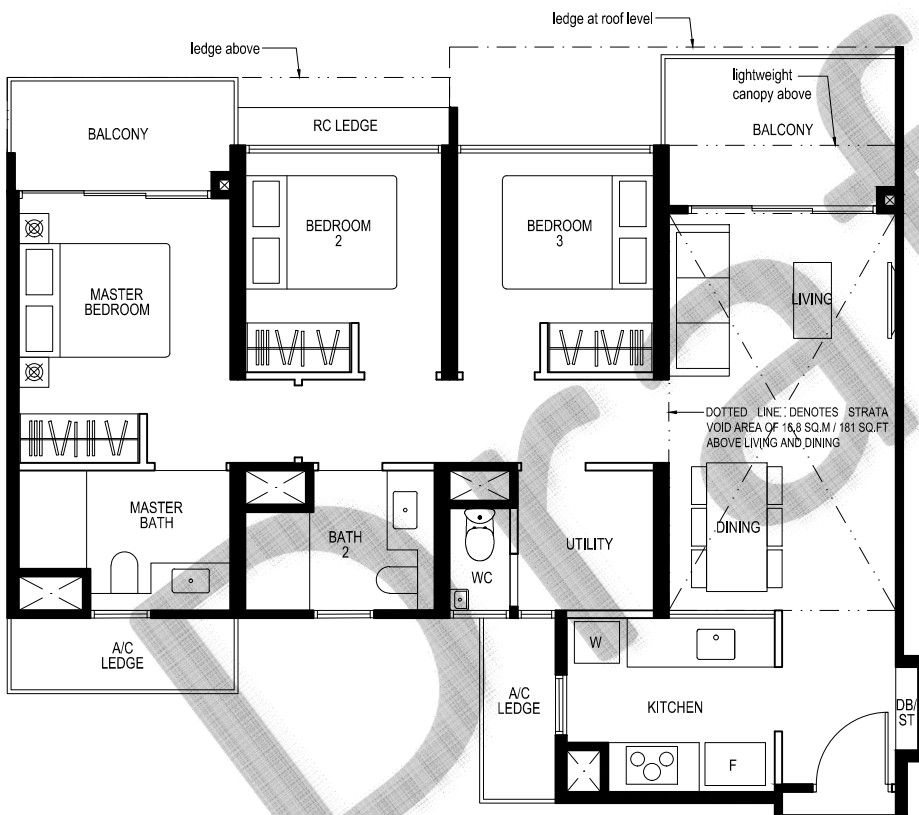
N
 KEY PLAN



Type C6P
3-Bedroom Deluxe
 95 sq.m. / 1023 sq.ft.

UNIT
 #05-38

MIRRORED
 #05-03



Type C6L
3-Bedroom Deluxe
 112 sq.m. / 1206 sq.ft.

Including strata void area of 16.8 sq.m / 181 sq.ft above living and dining.
 Approximate 4.5m floor to ceiling height at living and dining.

UNIT
 #16-38

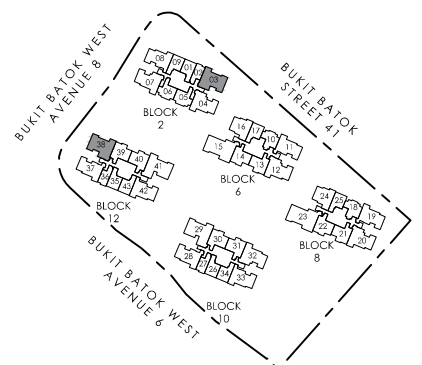
MIRRORED
 #16-03

DOTTED LINE DENOTES STRATA VOID AREA OF 16.8 SQ.M / 181 SQ.FT ABOVE LIVING AND DINING

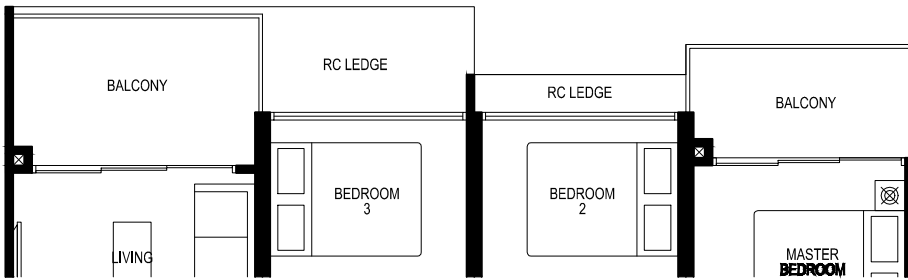
LEGEND:

Wall not to be hacked / altered (including by way of drilling)

The above plans and illustration are subject to change as may be required or approved by the relevant authorities. All areas stated herein include PES (private enclosed space), balcony, A/C ledge and void where applicable. All areas and measurements stated herein are approximate and subject to adjustment on final survey. Please refer to the key plan for orientation.



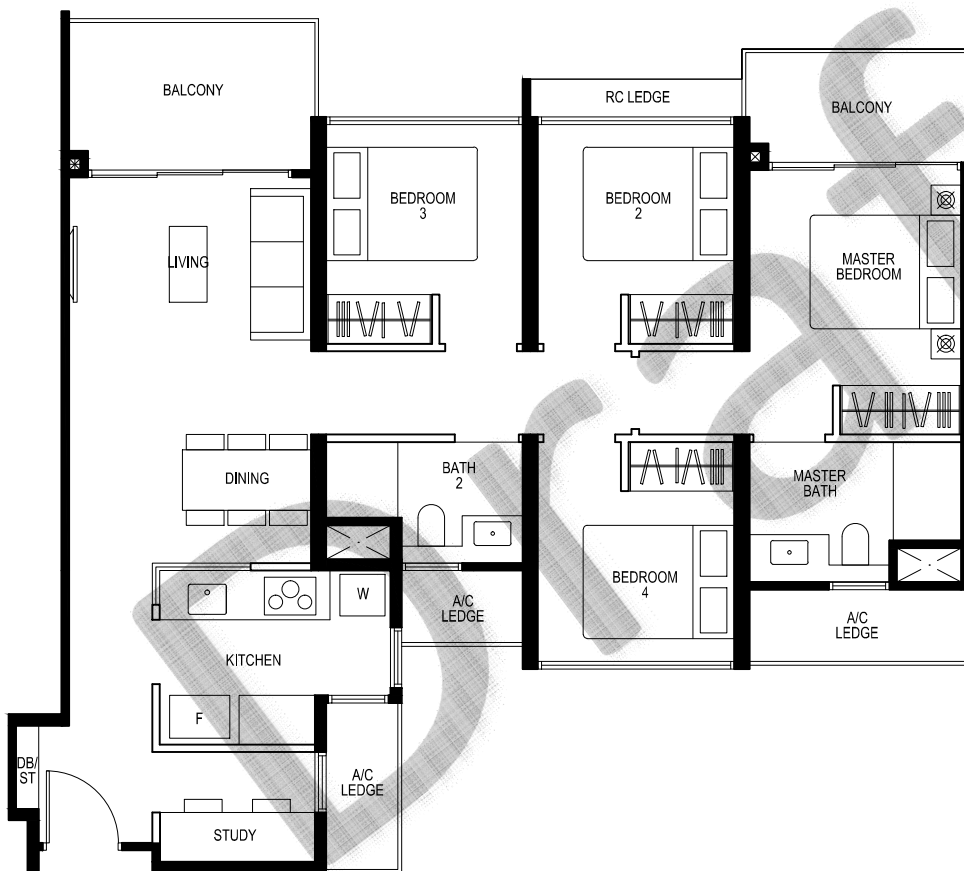
KEY PLAN



Type D1
4-Bedroom + Study
105 sq.m. / 1130 sq.ft.

- UNIT
#06-41
#09-41
#12-41
#15-41

- MIRRORED
#06-29
#09-29
#12-29
#15-29



Type D1
4-Bedroom + Study
105 sq.m. / 1130 sq.ft.

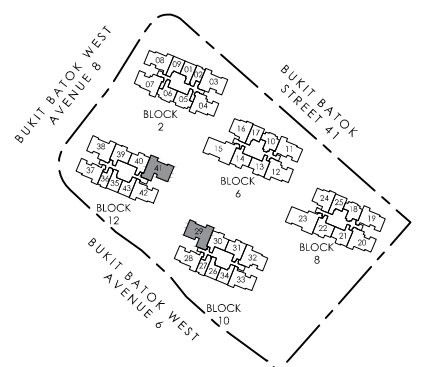
- UNIT
#07-41
#08-41
#10-41
#11-41
#13-41
#14-41

- MIRRORED
#07-29
#08-29
#10-29
#11-29
#13-29
#14-29

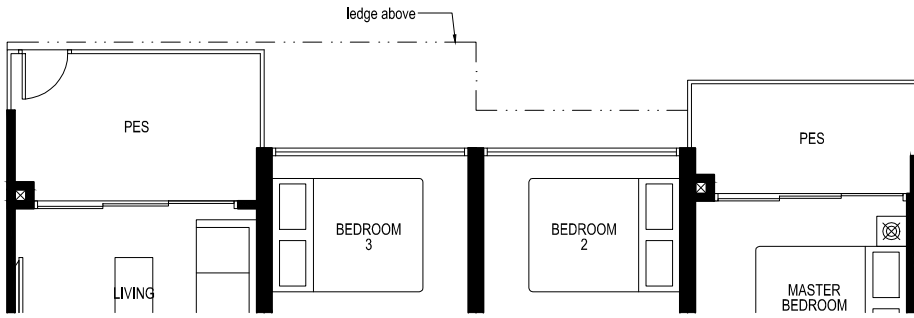
LEGEND:

■ Wall not to be hacked / altered (including by way of drilling)

The above plans and illustration are subject to change as may be required or approved by the relevant authorities. All areas stated herein include PES (private enclosed space), balcony, A/C ledge and void where applicable. All areas and measurements stated herein are approximate and subject to adjustment on final survey. Please refer to the key plan for orientation.



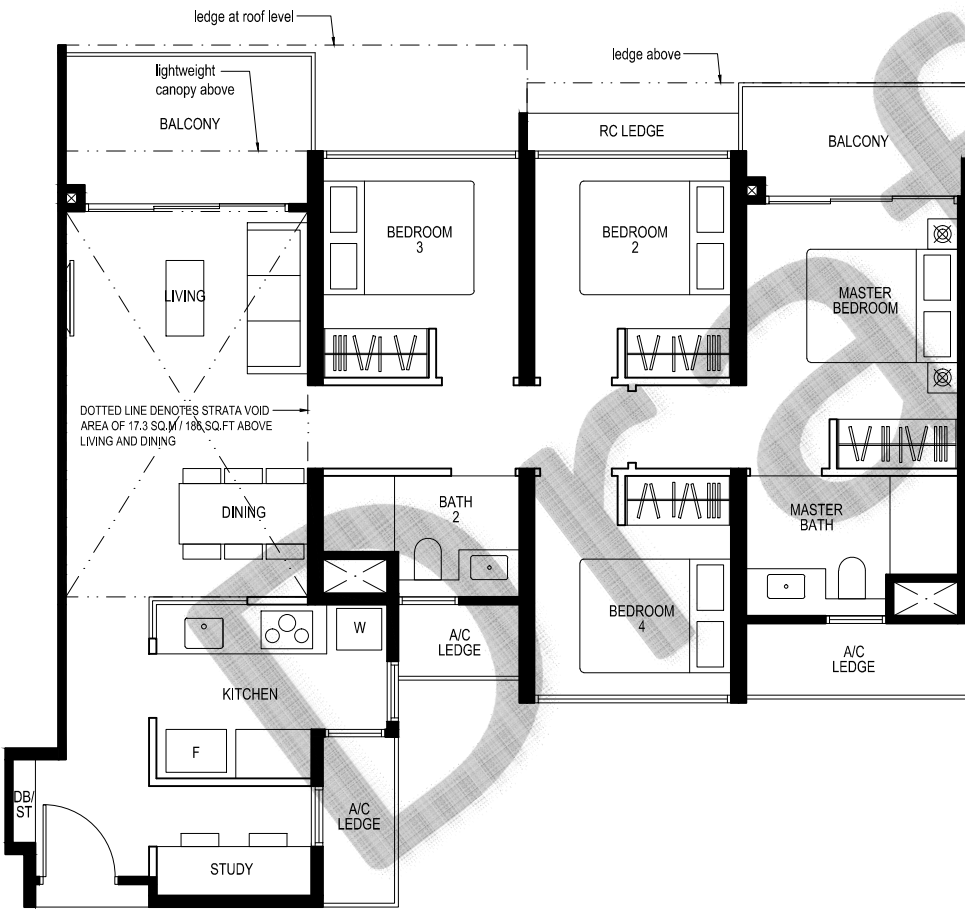
N
KEY PLAN



Type D1P
4-Bedroom + Study
 105 sq.m. / 1130 sq.ft.

UNIT
 #05-41

MIRRORED
 #05-29



Type D1L
4-Bedroom + Study
 122 sq.m. / 1313 sq.ft.

Including strata void area of 17.3 sq.m / 186 sq.ft above living and dining.
 Approximate 4.5m floor to ceiling height at living and dining.

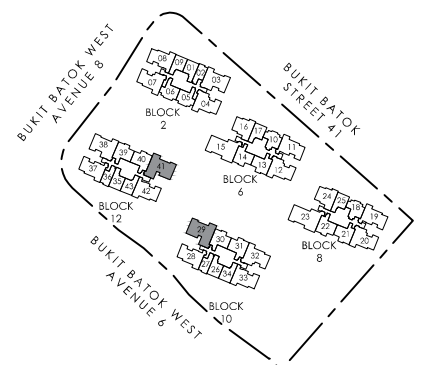
UNIT
 #16-41

MIRRORED
 #16-29

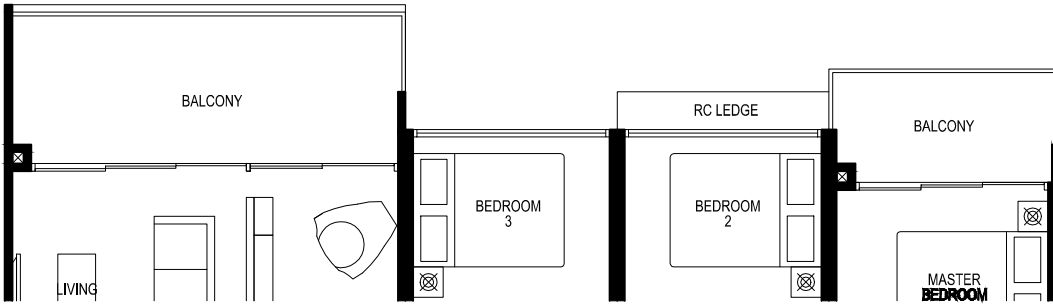
LEGEND:

■ Wall not to be hacked / altered (including by way of drilling)

The above plans and illustration are subject to change as may be required or approved by the relevant authorities. All areas stated herein include PES (private enclosed space), balcony, A/C ledge and void where applicable. All areas and measurements stated herein are approximate and subject to adjustment on final survey. Please refer to the key plan for orientation.



N
 KEY PLAN



Type D2
4-Bedroom Deluxe
122 sq.m. / 1313 sq.ft.

UNIT	
#06-15	#06-23
#09-15	#09-23
#12-15	#12-23
#15-15	#15-23



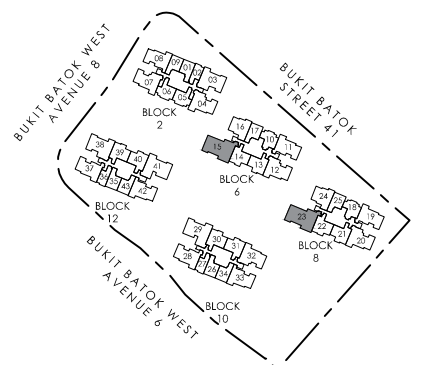
Type D2
4-Bedroom Deluxe
122 sq.m. / 1313 sq.ft.

UNIT	
#07-15	#07-23
#08-15	#08-23
#10-15	#10-23
#11-15	#11-23
#13-15	#13-23
#14-15	#14-23

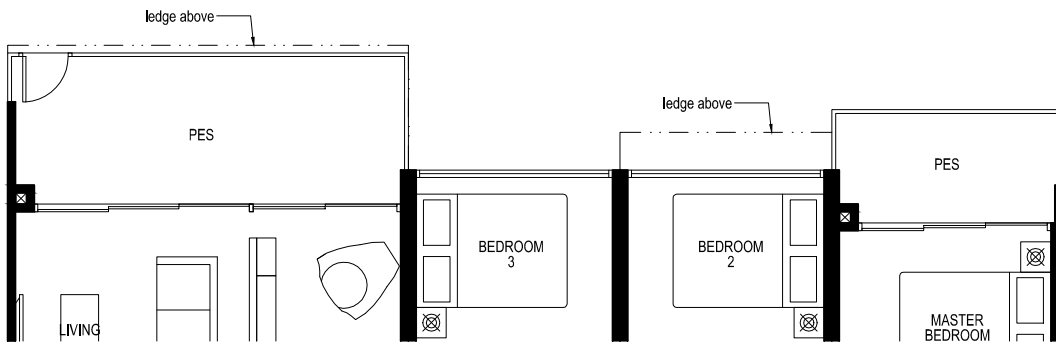
LEGEND:

Wall not to be hacked / altered (including by way of drilling)

The above plans and illustration are subject to change as may be required or approved by the relevant authorities. All areas stated herein include PES (private enclosed space), balcony, A/C ledge and void where applicable. All areas and measurements stated herein are approximate and subject to adjustment on final survey. Please refer to the key plan for orientation.

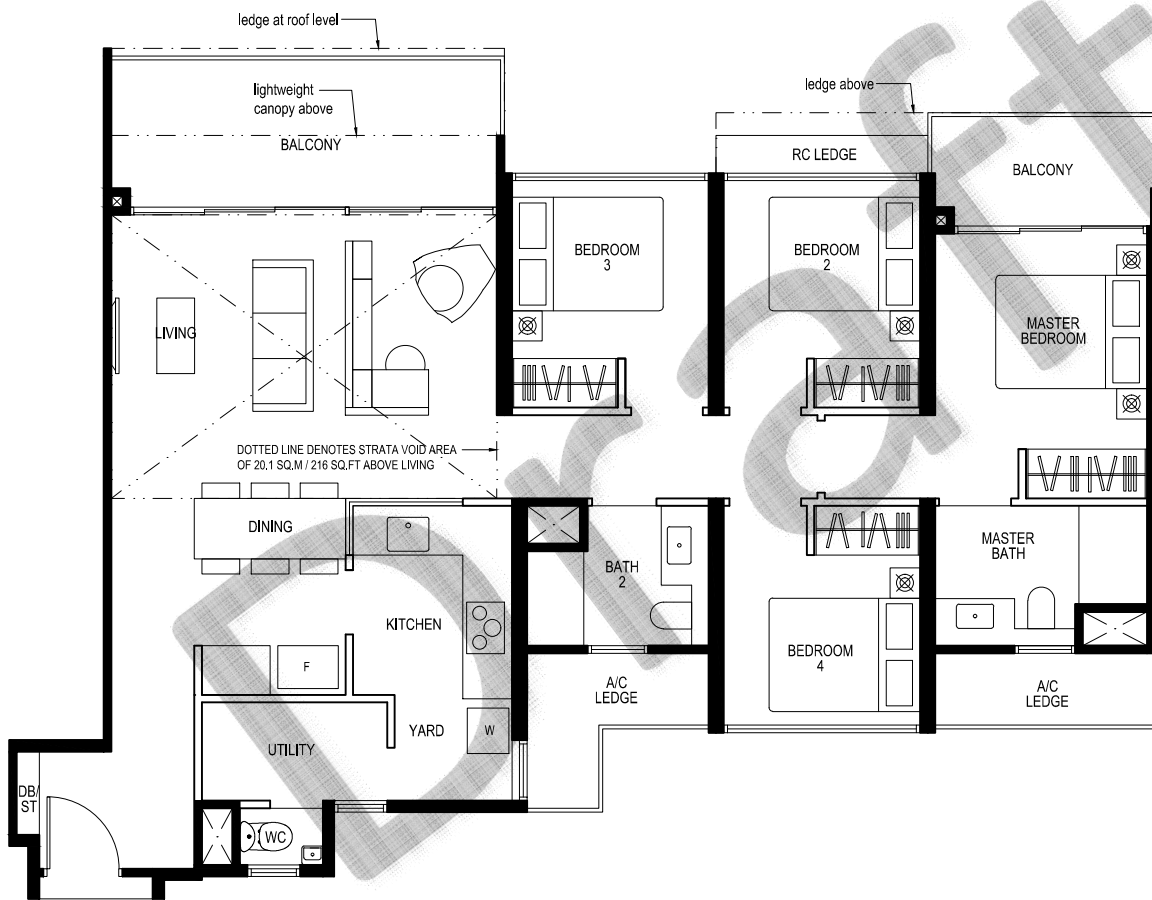


N
KEY PLAN



Type D2P
4-Bedroom Deluxe
 122 sq.m. / 1313 sq.ft.

UNIT #05-15 #05-23

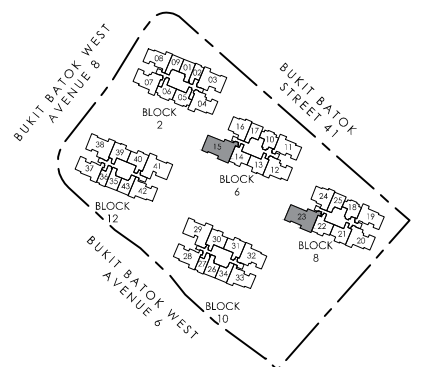


Type D2L
4-Bedroom Deluxe
 142 sq.m. / 1528 sq.ft.
 Including strata void area of 20.1 sq.m / 216 sq.ft above living. Approximate 4.5m floor to ceiling height at living.

UNIT #16-15 #16-23

LEGEND:
 Wall not to be hacked / altered (including by way of drilling)

The above plans and illustration are subject to change as may be required or approved by the relevant authorities. All areas stated herein include PES (private enclosed space), balcony, A/C ledge and void where applicable. All areas and measurements stated herein are approximate and subject to adjustment on final survey. Please refer to the key plan for orientation.



KEY PLAN