

1 BEDROOM

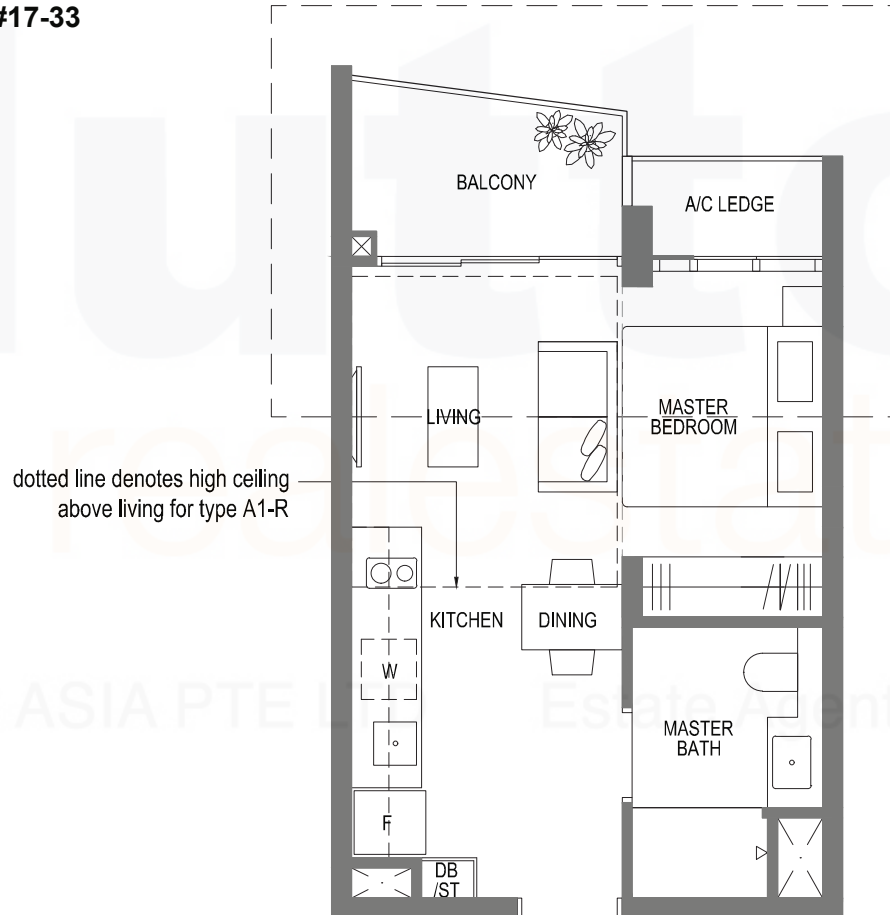
TYPE A1 / A1-R

38 sq m | 409 sq ft 47 sq m | 506 sq ft

incl. of 9 sqm / 97 sqft of
void area (high ceiling) above living

#02-22 TO #16-22,
#03-33 TO #16-33

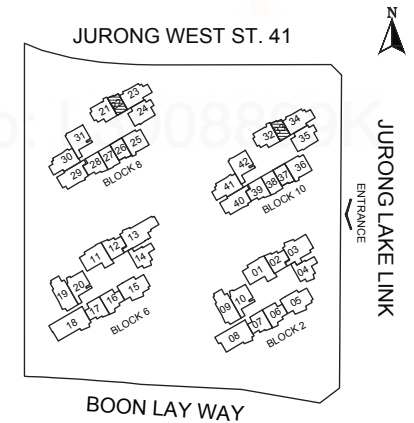
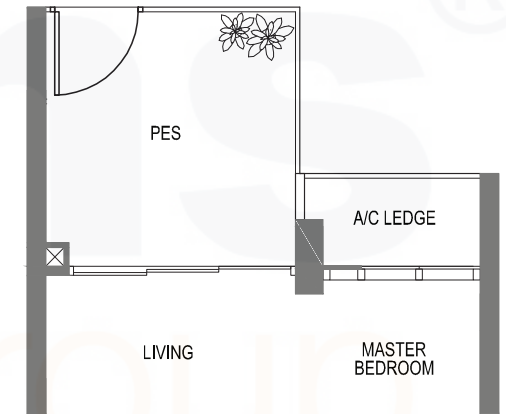
#17-22,
#17-33



TYPE A1-P

41 sq m | 441 sq ft

#01-22,
#02-33



AREA INCLUDES PES, A/C LEDGE, BALCONY AND VOID AREA. THE PLANS ARE SUBJECT TO CHANGE AS MAY REQUIRED OR APPROVED BY THE RELEVANT AUTHORITIES. AREAS ARE APPROXIMATE MEASUREMENTS ONLY AND ARE SUBJECT TO FINAL SURVEY. PLANS ARE NOT DRAWN TO SCALE AND DO NOT FORM PART OF THE CONTRACT.

1 BEDROOM

TYPE A2 / A2-R

44 sq m | 474 sq ft

57 sq m | 614 sq ft

incl. of 13 sqm / 140 sqft of
void area (high ceiling) above living & dining

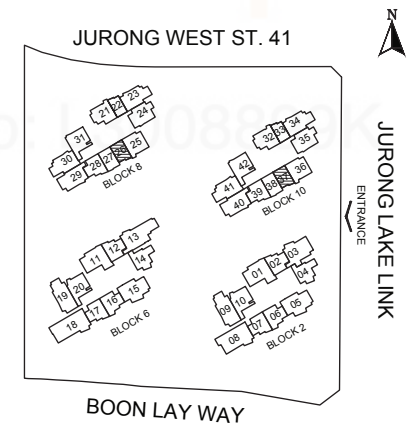
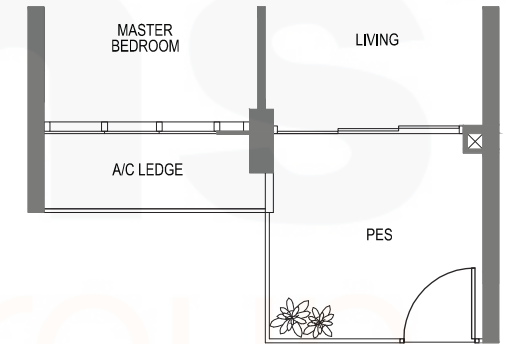
#02-26 TO #16-26,
#02-37 TO #16-37

#17-26,
#17-37

TYPE A2-P

47 sq m | 506 sq ft

#01-26,
#01-37



AREA INCLUDES PES, A/C LEDGE, BALCONY AND VOID AREA. THE PLANS ARE SUBJECT TO CHANGE AS MAY REQUIRED OR APPROVED BY THE RELEVANT AUTHORITIES. AREAS ARE APPROXIMATE MEASUREMENTS ONLY AND ARE SUBJECT TO FINAL SURVEY. PLANS ARE NOT DRAWN TO SCALE AND DO NOT FORM PART OF THE CONTRACT.

1 BEDROOM + STUDY

TYPE A3 / TYPE A3-R

48 sq m | 517 sq ft

61 sq m | 657 sq ft

incl. of 13 sqm / 140 sqft of
void area (high ceiling) above living & dining

#02-27 TO #16-27,
#02-38 TO #16-38

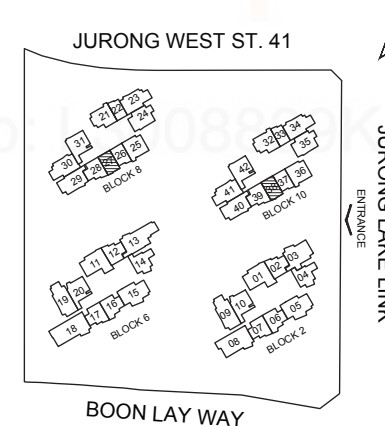
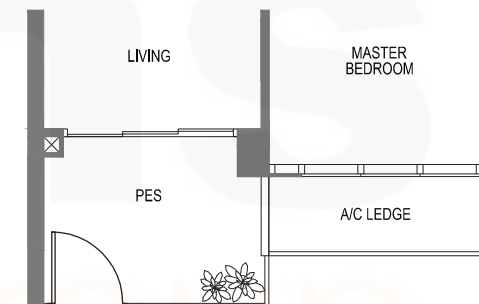
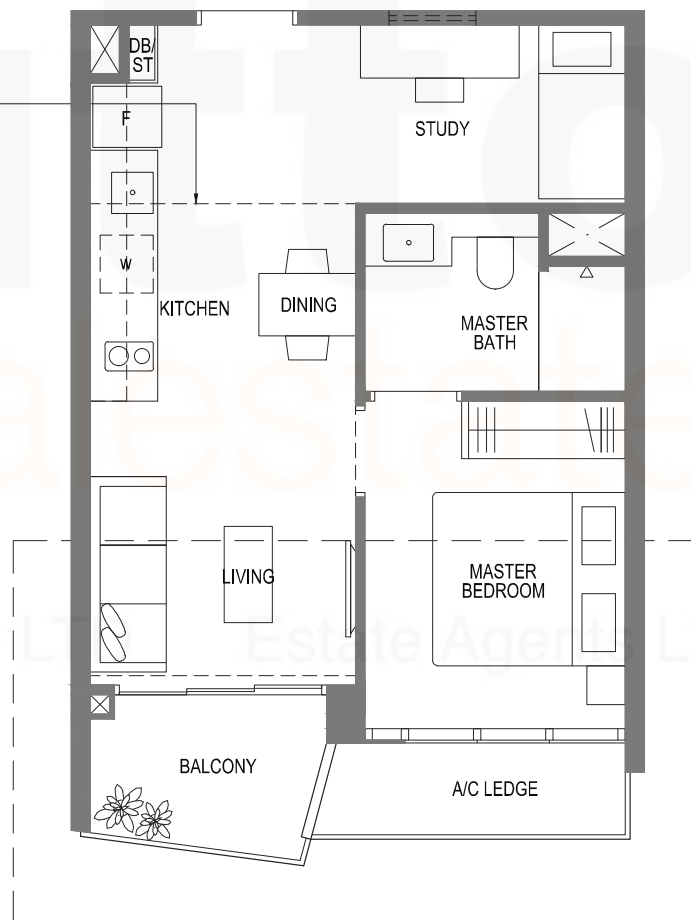
#17-27,
#17-38

TYPE A3-P

50 sq m | 538 sq ft

#01-27,
#01-38

dotted line denotes high ceiling
above living and dining
for type A3-R



AREA INCLUDES PES, A/C LEDGE, BALCONY AND VOID AREA. THE PLANS ARE SUBJECT TO CHANGE AS MAY REQUIRED OR APPROVED BY THE RELEVANT AUTHORITIES. AREAS ARE APPROXIMATE MEASUREMENTS ONLY AND ARE SUBJECT TO FINAL SURVEY. PLANS ARE NOT DRAWN TO SCALE AND DO NOT FORM PART OF THE CONTRACT.

2 BEDROOM

TYPE B1 / TYPE B1-R

57 sq m | 614 sq ft

69 sq m | 743 sq ft

incl. of 12 sqm / 129 sqft of void area (high ceiling) above living & dining

#02-02 TO #16-02,
#02-07 TO #16-07
#02-12 TO #16-12,
#02-17 TO #16-17
#02-28 TO #16-28,
#02-39 TO #16-39

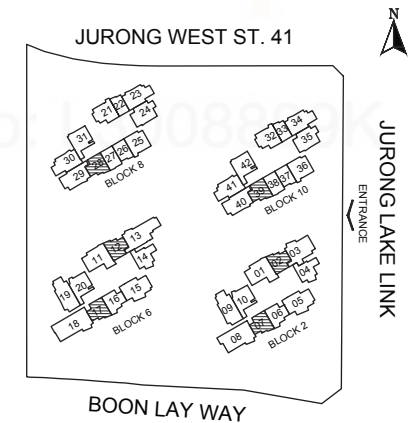
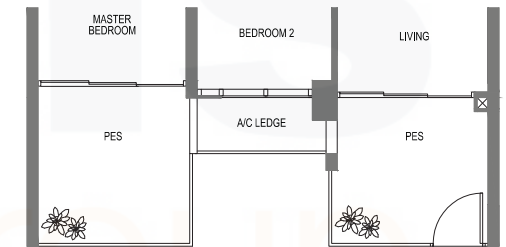
#17-02,
#17-07,
#17-12,
#17-17,
#17-28,
#17-39



TYPE B1-P

67 sq m | 721 sq ft

#01-02,
#01-07,
#01-12
#01-17,
#01-28,
#01-39



AREA INCLUDES PES, A/C LEDGE, BALCONY AND VOID AREA. THE PLANS ARE SUBJECT TO CHANGE AS MAY REQUIRED OR APPROVED BY THE RELEVANT AUTHORITIES. AREAS ARE APPROXIMATE MEASUREMENTS ONLY AND ARE SUBJECT TO FINAL SURVEY. PLANS ARE NOT DRAWN TO SCALE AND DO NOT FORM PART OF THE CONTRACT.

2 BEDROOM

TYPE B1a / TYPE B1a-R

58 sq m | 624 sq ft 70 sq m | 753 sq ft

incl. of 12 sqm / 129 sqft of
void area (high ceiling) above living & dining

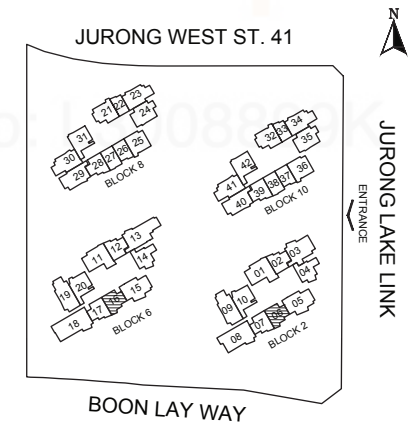
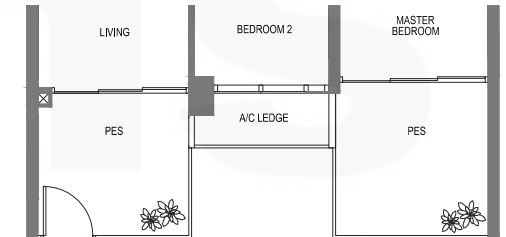
#02-06 TO #16-06,
#02-16 TO #16-16

#17-06,
#17-16

TYPE B1a-P

67 sq m | 721 sq ft

#01-06,
#01-16



AREA INCLUDES PES, A/C LEDGE, BALCONY AND VOID AREA. THE PLANS ARE SUBJECT TO CHANGE AS MAY REQUIRED OR APPROVED BY THE RELEVANT AUTHORITIES. AREAS ARE APPROXIMATE MEASUREMENTS ONLY AND ARE SUBJECT TO FINAL SURVEY. PLANS ARE NOT DRAWN TO SCALE AND DO NOT FORM PART OF THE CONTRACT.

2 BEDROOM

TYPE B2 / TYPE B2-R

62 sq m | 667 sq ft

76 sq m | 818 sq ft

incl. of 14 sqm / 151 sqft of
void area (high ceiling) above living & dining

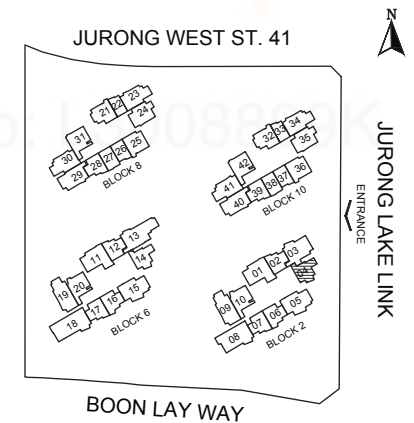
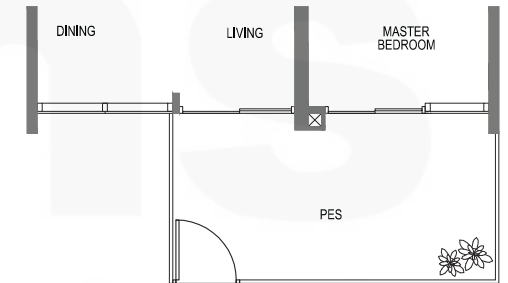
#02-04 TO #16-04

#17-04

TYPE B2-P

69 sq m | 743 sq ft

#01-04



AREA INCLUDES PES, A/C LEDGE, BALCONY AND VOID AREA. THE PLANS ARE SUBJECT TO CHANGE AS MAY REQUIRED OR APPROVED BY THE RELEVANT AUTHORITIES. AREAS ARE APPROXIMATE MEASUREMENTS ONLY AND ARE SUBJECT TO FINAL SURVEY. PLANS ARE NOT DRAWN TO SCALE AND DO NOT FORM PART OF THE CONTRACT.

2 BEDROOM

TYPE B2a / TYPE B2a-R

62 sq m | 667 sq ft 76 sq m | 818 sq ft

incl. of 14 sqm / 151 sqft of
void area (high ceiling) above living & dining

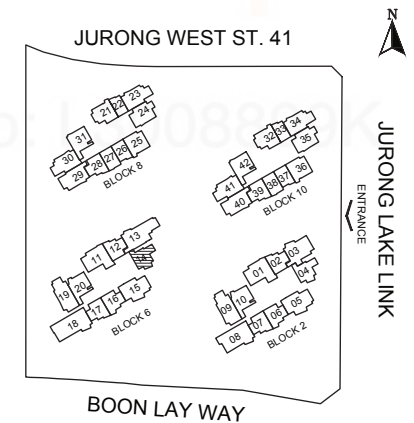
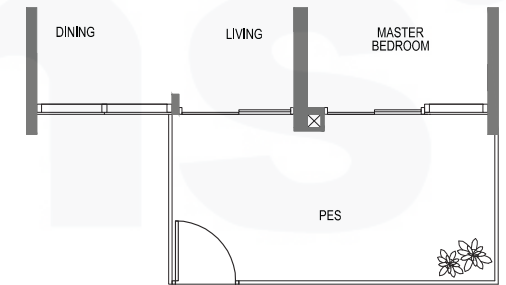
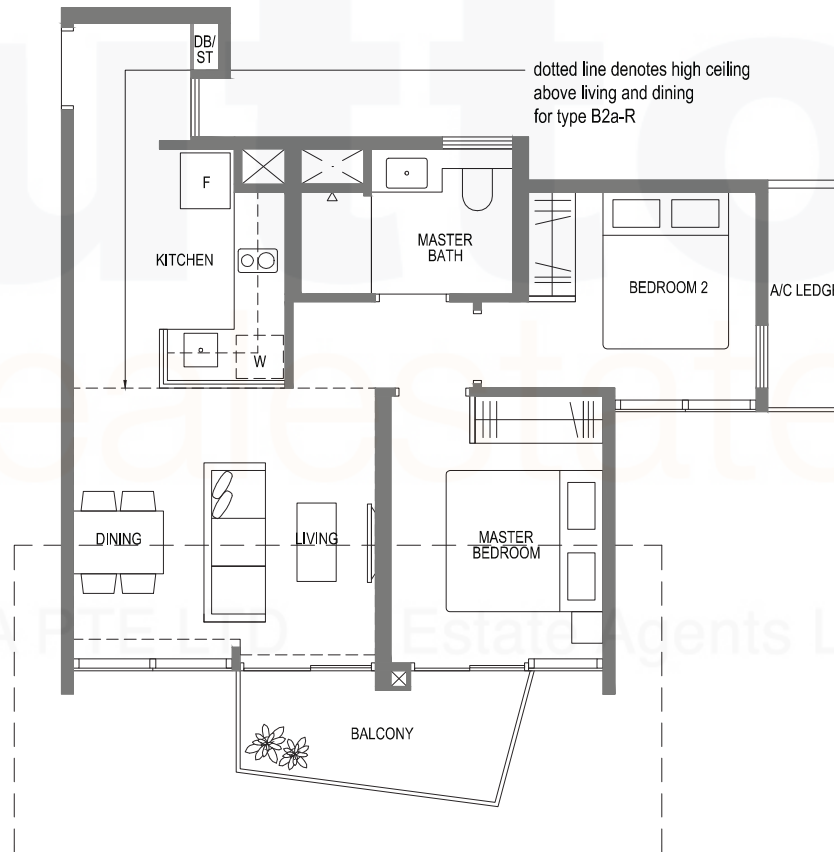
#02-14 TO #16-14

#17-14

TYPE B2a-P

69 sq m | 743 sq ft

#01-14



AREA INCLUDES PES, A/C LEDGE, BALCONY AND VOID AREA. THE PLANS ARE SUBJECT TO CHANGE AS MAY REQUIRED OR APPROVED BY THE RELEVANT AUTHORITIES. AREAS ARE APPROXIMATE MEASUREMENTS ONLY AND ARE SUBJECT TO FINAL SURVEY. PLANS ARE NOT DRAWN TO SCALE AND DO NOT FORM PART OF THE CONTRACT.

2 BEDROOM

TYPE B3 / TYPE B3-R

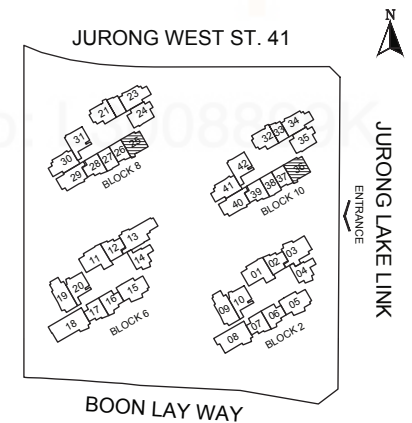
67 sq m | 721 sq ft

80 sq m | 861 sq ft

incl. of 13 sqm / 140 sqft of
void area (high ceiling) above living & dining

#02-25 TO #16-25,
#02-36 TO #16-36

#17-25,
#17-36



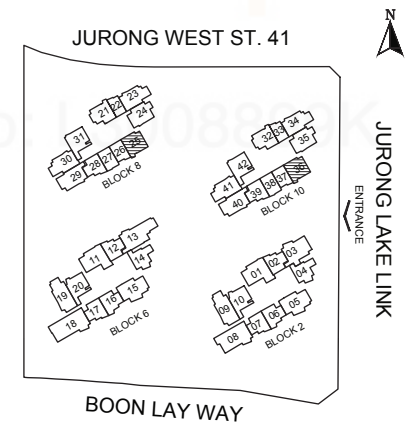
AREA INCLUDES PES, A/C LEDGE, BALCONY AND VOID AREA. THE PLANS ARE SUBJECT TO CHANGE AS MAY REQUIRED OR APPROVED BY THE RELEVANT AUTHORITIES. AREAS ARE APPROXIMATE MEASUREMENTS ONLY AND ARE SUBJECT TO FINAL SURVEY. PLANS ARE NOT DRAWN TO SCALE AND DO NOT FORM PART OF THE CONTRACT.

2 BEDROOM

TYPE B3-P

70 sq m | 753 sq ft

#01-25,
#01-36



AREA INCLUDES PES, A/C LEDGE, BALCONY AND VOID AREA. THE PLANS ARE SUBJECT TO CHANGE AS MAY REQUIRED OR APPROVED BY THE RELEVANT AUTHORITIES. AREAS ARE APPROXIMATE MEASUREMENTS ONLY AND ARE SUBJECT TO FINAL SURVEY. PLANS ARE NOT DRAWN TO SCALE AND DO NOT FORM PART OF THE CONTRACT.

2 BEDROOM

TYPE B3a / TYPE B3a-R

67 sq m | 721 sq ft

80 sq m | 861 sq ft

incl. of 13 sqm / 140 sqft of void area (high ceiling) above living & dining

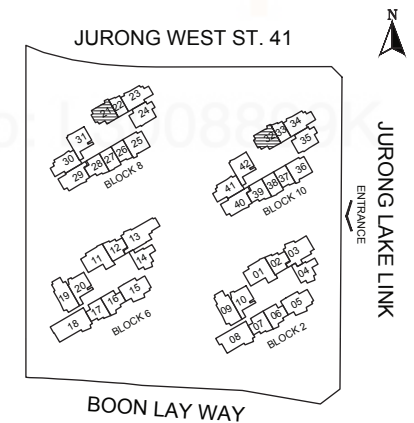
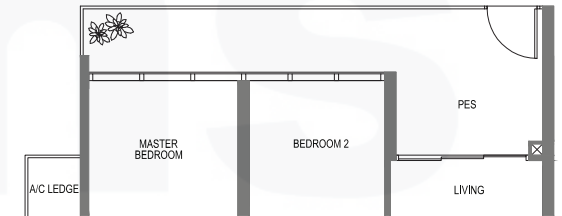
#02-21 TO #16-21,
#03-32 TO #16-32

#17-21,
#17-32

TYPE B3a-P

76 sq m | 818 sq ft

#01-21,
#02-32



AREA INCLUDES PES, A/C LEDGE, BALCONY AND VOID AREA. THE PLANS ARE SUBJECT TO CHANGE AS MAY REQUIRED OR APPROVED BY THE RELEVANT AUTHORITIES. AREAS ARE APPROXIMATE MEASUREMENTS ONLY AND ARE SUBJECT TO FINAL SURVEY. PLANS ARE NOT DRAWN TO SCALE AND DO NOT FORM PART OF THE CONTRACT.

2 BEDROOM

TYPE B4 / TYPE B4-R

72 sq m | 775 sq ft

89 sq m | 958 sq ft

incl. of 17 sqm / 183 sqft of
void area (high ceiling) above living & dining

#02-10 TO #16-10,
#02-20 TO #16-20

#17-10,
#17-20

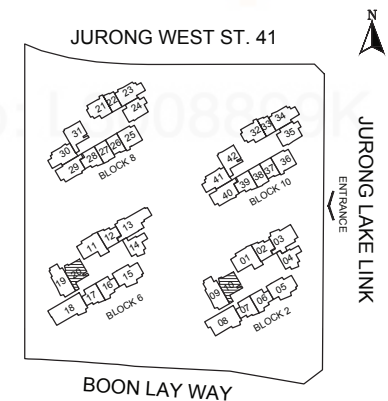
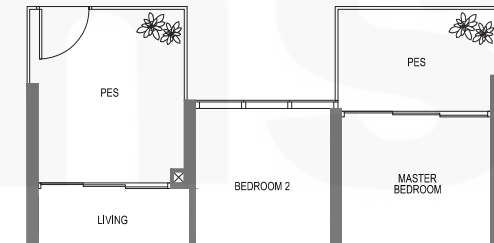
TYPE B4-P

82 sq m | 883 sq ft

#01-10,
#01-20



dotted line denotes high ceiling
above living and dining
for type B4-R



AREA INCLUDES PES, A/C LEDGE, BALCONY AND VOID AREA. THE PLANS ARE SUBJECT TO CHANGE AS MAY REQUIRED OR APPROVED BY THE RELEVANT AUTHORITIES. AREAS ARE APPROXIMATE MEASUREMENTS ONLY AND ARE SUBJECT TO FINAL SURVEY. PLANS ARE NOT DRAWN TO SCALE AND DO NOT FORM PART OF THE CONTRACT.

2 BEDROOM

TYPE B4a / TYPE B4a-R

72 sq m | 775 sq ft 89 sq m | 958 sq ft

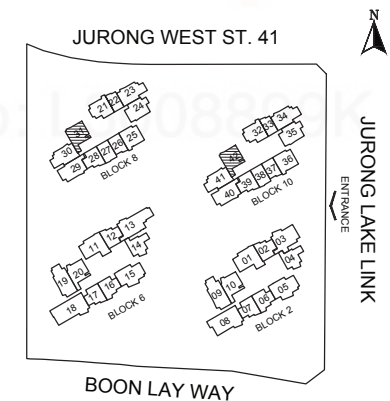
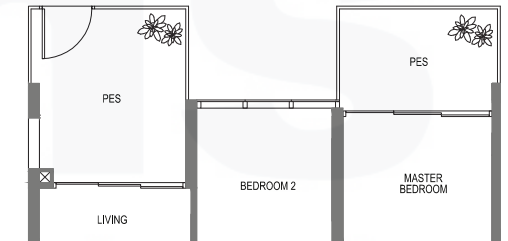
incl. of 17 sqm / 183 sqft of
void area (high ceiling) above living & dining

#02-31 TO #16-31, #17-31,
#02-42 TO #16-42 #17-42

TYPE B4a-P

82 sq m | 883 sq ft

#01-31,
#01-42



AREA INCLUDES PES, A/C LEDGE, BALCONY AND VOID AREA. THE PLANS ARE SUBJECT TO CHANGE AS MAY REQUIRED OR APPROVED BY THE RELEVANT AUTHORITIES. AREAS ARE APPROXIMATE MEASUREMENTS ONLY AND ARE SUBJECT TO FINAL SURVEY. PLANS ARE NOT DRAWN TO SCALE AND DO NOT FORM PART OF THE CONTRACT.

2 BEDROOM + STUDY

TYPE B5 / TYPE B5-R

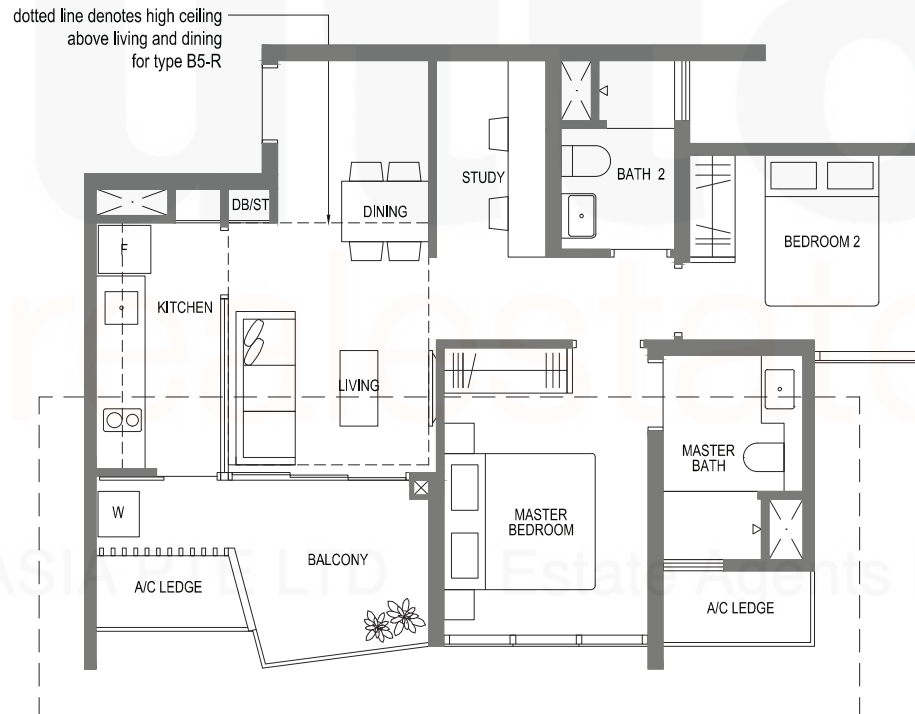
72 sq m | 775 sq ft

81 sq m | 872 sq ft

incl. of 9 sqm / 97 sqft of
void area (high ceiling) above living & dining

#02-24 TO #16-24,
#03-35 TO #16-35

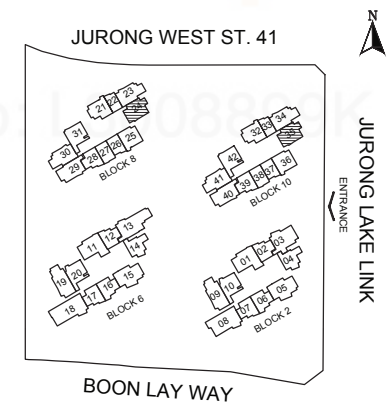
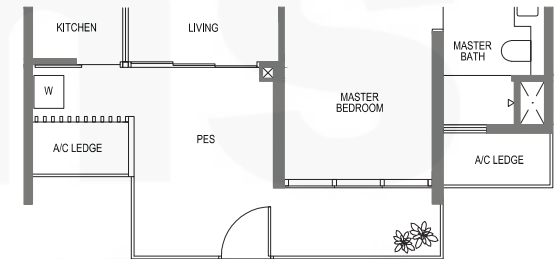
#17-24,
#17-35



TYPE B5-P

79 sq m | 850 sq ft

#01-24,
#02-35



AREA INCLUDES PES, A/C LEDGE, BALCONY AND VOID AREA. THE PLANS ARE SUBJECT TO CHANGE AS MAY REQUIRED OR APPROVED BY THE RELEVANT AUTHORITIES. AREAS ARE APPROXIMATE MEASUREMENTS ONLY AND ARE SUBJECT TO FINAL SURVEY. PLANS ARE NOT DRAWN TO SCALE AND DO NOT FORM PART OF THE CONTRACT.

2 BEDROOM + STUDY

TYPE B6 / TYPE B6-R

76 sq m | 818 sq ft

90 sq m | 969 sq ft

incl. of 14 sqm / 151 sqft of void area (high ceiling) above living & dining

#02-23 TO #16-23,
#03-34 TO #16-34

#17-23,
#17-34

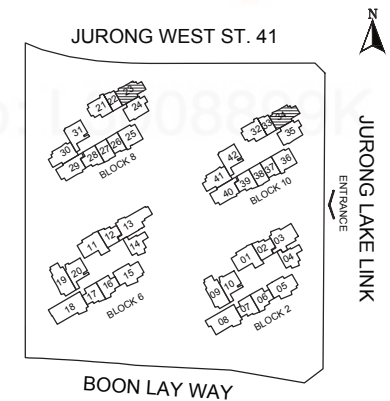
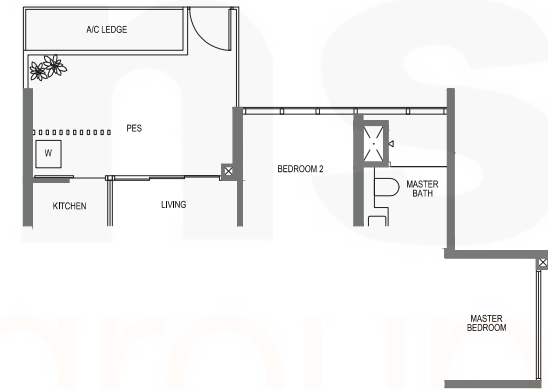
TYPE B6-P

78 sq m | 840 sq ft

#01-23,
#02-34



dotted line denotes high ceiling above living and dining for type B6-R



AREA INCLUDES PES, A/C LEDGE, BALCONY AND VOID AREA. THE PLANS ARE SUBJECT TO CHANGE AS MAY REQUIRED OR APPROVED BY THE RELEVANT AUTHORITIES. AREAS ARE APPROXIMATE MEASUREMENTS ONLY AND ARE SUBJECT TO FINAL SURVEY. PLANS ARE NOT DRAWN TO SCALE AND DO NOT FORM PART OF THE CONTRACT.

2 BEDROOM + STUDY

TYPE B6a / TYPE B6a-R

76 sq m | 818 sq ft

89 sq m | 958 sq ft

incl. of 13 sqm / 140 sqft of void area (high ceiling) above living & dining

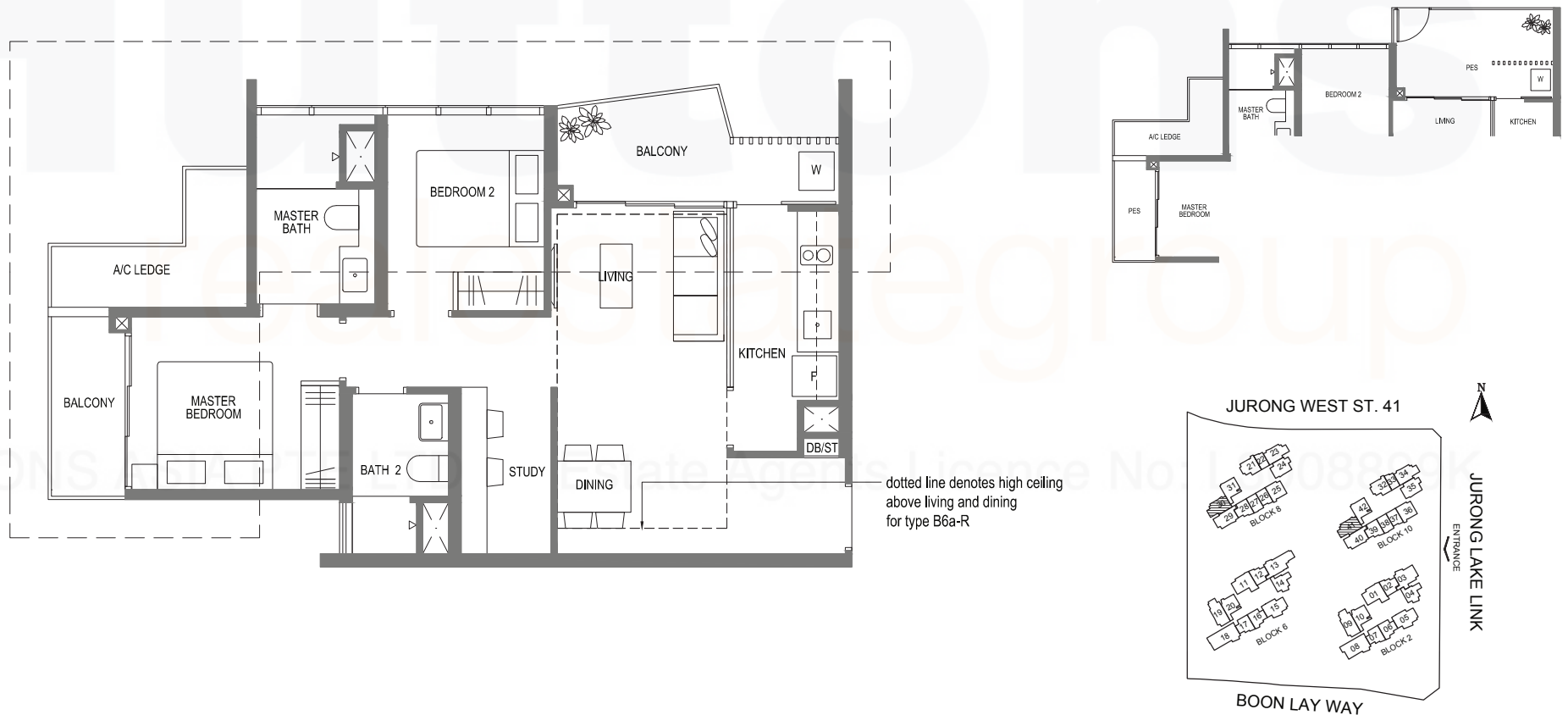
#02-30 TO #16-30,
#02-41 TO #16-41

#17-30,
#17-41

TYPE B6a-P

81 sq m | 872 sq ft

#01-30,
#01-41



AREA INCLUDES PES, A/C LEDGE, BALCONY AND VOID AREA. THE PLANS ARE SUBJECT TO CHANGE AS MAY REQUIRED OR APPROVED BY THE RELEVANT AUTHORITIES. AREAS ARE APPROXIMATE MEASUREMENTS ONLY AND ARE SUBJECT TO FINAL SURVEY. PLANS ARE NOT DRAWN TO SCALE AND DO NOT FORM PART OF THE CONTRACT.

2 BEDROOM + STUDY

TYPE B7 / TYPE B7-R

80 sq m | 861 sq ft

94 sq m | 1,012 sq ft

incl. of 14 sqm / 151 sqft of void area (high ceiling) above living & dining

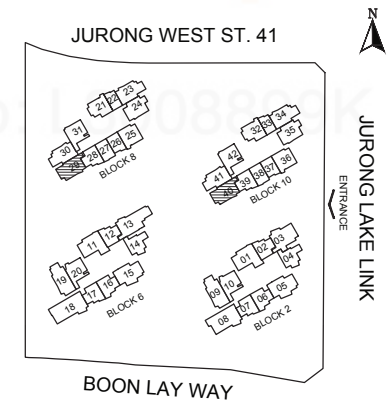
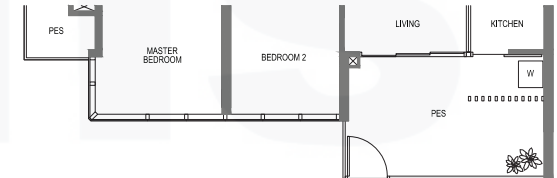
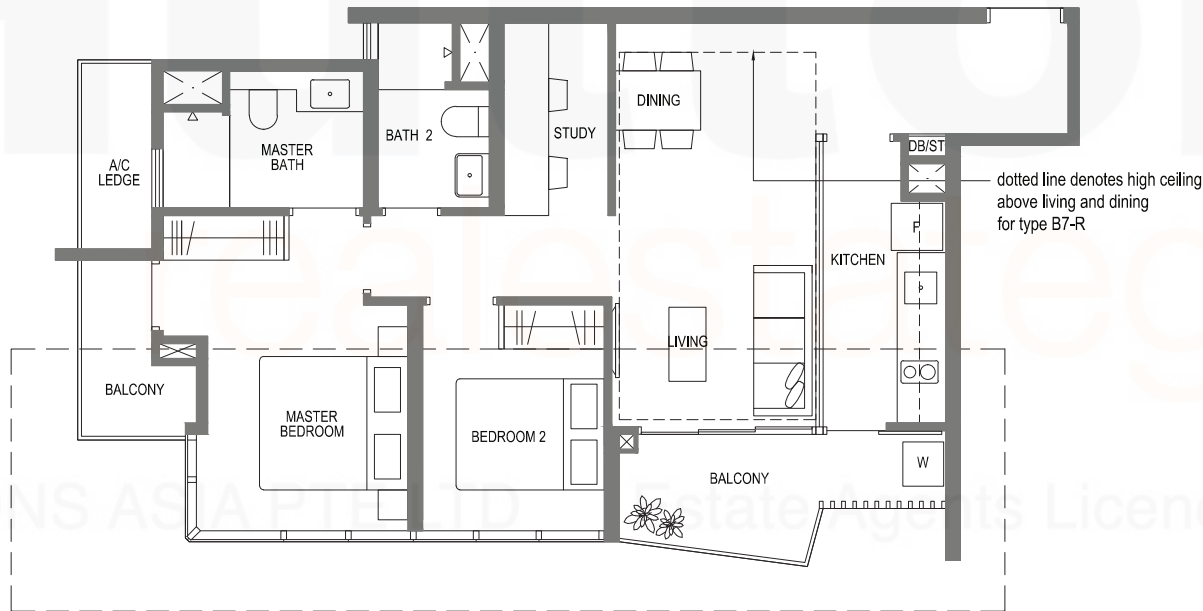
#02-29 TO #16-29,
#02-40 TO #16-40

#17-29,
#17-40

TYPE B7-P

86 sq m | 926 sq ft

#01-29,
#01-40



AREA INCLUDES PES, A/C LEDGE, BALCONY AND VOID AREA. THE PLANS ARE SUBJECT TO CHANGE AS MAY REQUIRED OR APPROVED BY THE RELEVANT AUTHORITIES. AREAS ARE APPROXIMATE MEASUREMENTS ONLY AND ARE SUBJECT TO FINAL SURVEY. PLANS ARE NOT DRAWN TO SCALE AND DO NOT FORM PART OF THE CONTRACT.

3 BEDROOM

TYPE C1 / TYPE C1-R

84 sq m | 904 sq ft

94 sq m | 1,012 sq ft

incl. of 10 sqm / 108 sqft of
void area (high ceiling) above living

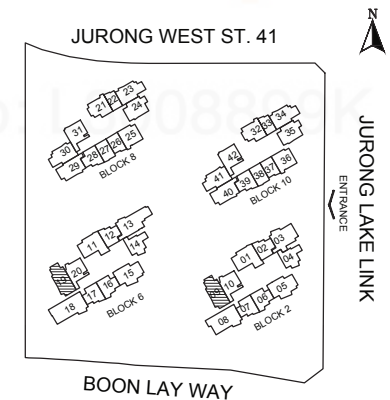
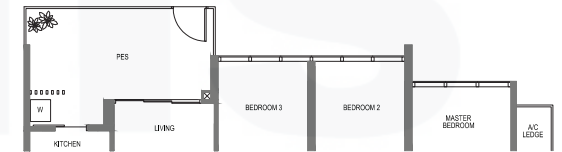
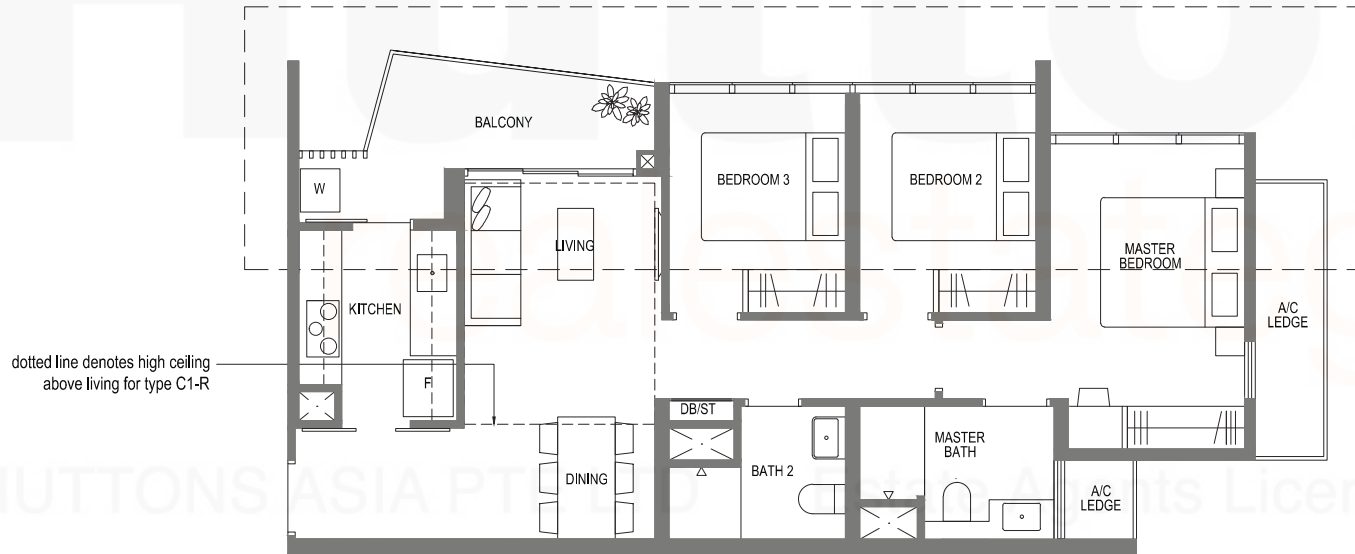
#02-09 TO #16-09,
#02-19 TO #16-19

#17-09,
#17-19

TYPE C1-P

91 sq m | 980 sq ft

#01-09,
#01-19



AREA INCLUDES PES, A/C LEDGE, BALCONY AND VOID AREA. THE PLANS ARE SUBJECT TO CHANGE AS MAY REQUIRED OR APPROVED BY THE RELEVANT AUTHORITIES. AREAS ARE APPROXIMATE MEASUREMENTS ONLY AND ARE SUBJECT TO FINAL SURVEY. PLANS ARE NOT DRAWN TO SCALE AND DO NOT FORM PART OF THE CONTRACT.

3 BEDROOM

TYPE C2 / TYPE C2-R

86 sq m | 926 sq ft

99 sq m | 1,066 sq ft

incl. of 13 sqm / 140 sqft of
void area (high ceiling) above living & dining

#02-05 TO #16-05,

#17-05,

#02-15 TO #16-15

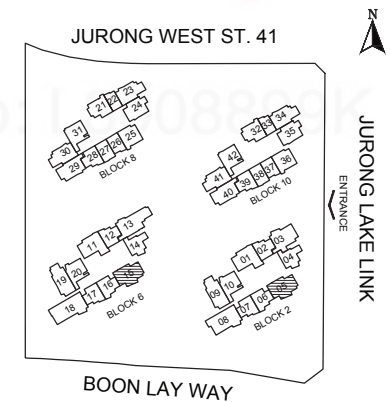
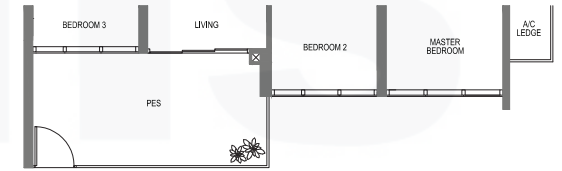
#17-15

TYPE C2-P

91 sq m | 980 sq ft

#01-05,

#01-15



AREA INCLUDES PES, A/C LEDGE, BALCONY AND VOID AREA. THE PLANS ARE SUBJECT TO CHANGE AS MAY REQUIRED OR APPROVED BY THE RELEVANT AUTHORITIES. AREAS ARE APPROXIMATE MEASUREMENTS ONLY AND ARE SUBJECT TO FINAL SURVEY. PLANS ARE NOT DRAWN TO SCALE AND DO NOT FORM PART OF THE CONTRACT.

3 BEDROOM

TYPE C3 / TYPE C3-R

88 sq m | 947 sq ft

103 sq m | 1,109 sq ft

incl. of 15 sqm / 161 sqft of
void area (high ceiling) above living & dining

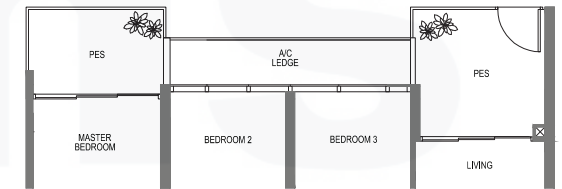
#02-01 TO #16-01,
#02-11 TO #16-11

#17-01,
#17-11

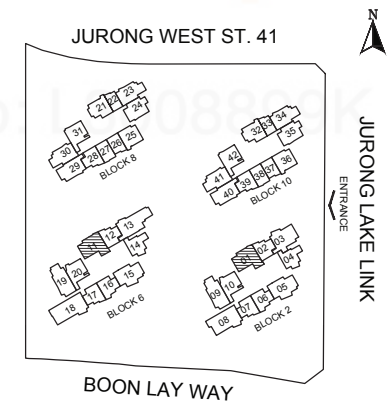
TYPE C3-P

94 sq m | 1,012 sq ft

#01-01,
#01-11



dotted line denotes high ceiling
above living and dining
for type C3-R



AREA INCLUDES PES, A/C LEDGE, BALCONY AND VOID AREA. THE PLANS ARE SUBJECT TO CHANGE AS MAY REQUIRED OR APPROVED BY THE RELEVANT AUTHORITIES. AREAS ARE APPROXIMATE MEASUREMENTS ONLY AND ARE SUBJECT TO FINAL SURVEY. PLANS ARE NOT DRAWN TO SCALE AND DO NOT FORM PART OF THE CONTRACT.

3 BEDROOM

TYPE C4 / TYPE C4-R

91 sq m | 980 sq ft

104 sq m | 1,119 sq ft

incl. of 13 sqm / 140 sqft of
void area (high ceiling) above living & dining

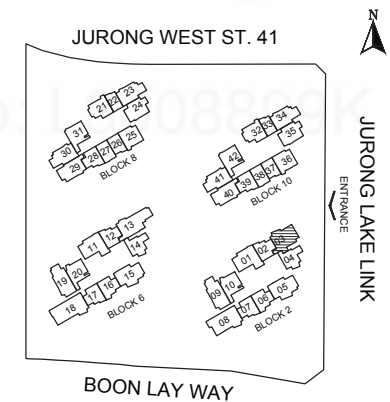
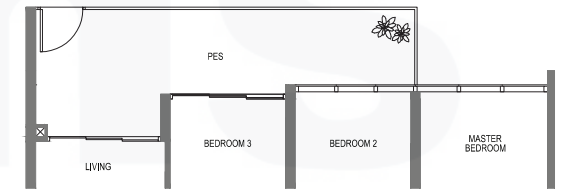
#02-03 TO #16-03

#17-03

TYPE C4-P

100 sq m | 1,076 sq ft

#01-03



AREA INCLUDES PES, A/C LEDGE, BALCONY AND VOID AREA. THE PLANS ARE SUBJECT TO CHANGE AS MAY REQUIRED OR APPROVED BY THE RELEVANT AUTHORITIES. AREAS ARE APPROXIMATE MEASUREMENTS ONLY AND ARE SUBJECT TO FINAL SURVEY. PLANS ARE NOT DRAWN TO SCALE AND DO NOT FORM PART OF THE CONTRACT.

4 BEDROOM

TYPE D1 / TYPE D1-R

107 sq m | 1,152 sq ft 124 sq m | 1,335 sq ft

incl. of 17 sqm / 183 sqft of
void area (high ceiling) above living & dining

#02-08 TO #16-08

#17-08

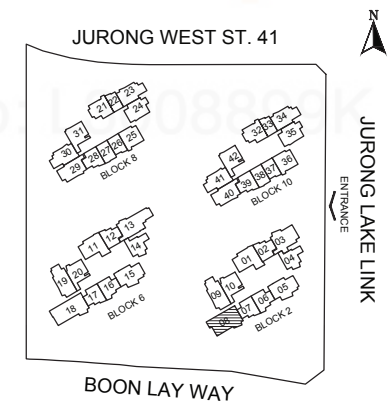
TYPE D1-P

124 sq m | 1,335 sq ft

#01-08



dotted line denotes high ceiling
above living and dining
for type D1-R



AREA INCLUDES PES, A/C LEDGE, BALCONY AND VOID AREA. THE PLANS ARE SUBJECT TO CHANGE AS MAY REQUIRED OR APPROVED BY THE RELEVANT AUTHORITIES. AREAS ARE APPROXIMATE MEASUREMENTS ONLY AND ARE SUBJECT TO FINAL SURVEY. PLANS ARE NOT DRAWN TO SCALE AND DO NOT FORM PART OF THE CONTRACT.

4 BEDROOM

TYPE D2 / TYPE D2-R

109 sq m | 1,173 sq ft 125 sq m | 1,346 sq ft

incl. of 16 sqm / 172 sqft of
void area (high ceiling) above living & dining

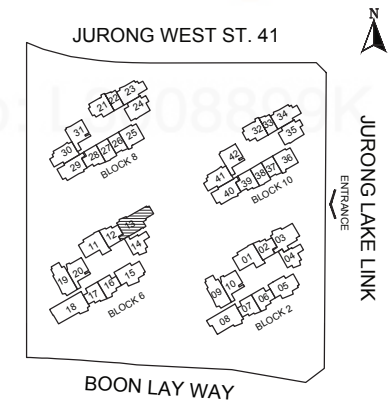
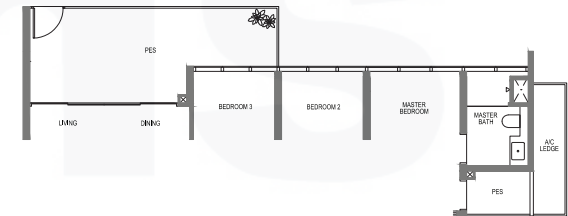
#02-13 TO #16-13

#17-13

TYPE D2-P

119 sq m | 1,281 sq ft

#01-13



AREA INCLUDES PES, A/C LEDGE, BALCONY AND VOID AREA. THE PLANS ARE SUBJECT TO CHANGE AS MAY REQUIRED OR APPROVED BY THE RELEVANT AUTHORITIES. AREAS ARE APPROXIMATE MEASUREMENTS ONLY AND ARE SUBJECT TO FINAL SURVEY. PLANS ARE NOT DRAWN TO SCALE AND DO NOT FORM PART OF THE CONTRACT.

5 BEDROOM

TYPE E1 / TYPE E1-R

121 sq m | 1,302 sq ft 138 sq m | 1,485 sq ft

incl. of 17 sqm / 183 sqft of
void area (high ceiling) above living & dining

#02-18 TO #16-18

#17-18

TYPE E1-P

138 sq m | 1,485 sq ft

#01-18



AREA INCLUDES PES, A/C LEDGE, BALCONY AND VOID AREA. THE PLANS ARE SUBJECT TO CHANGE AS MAY REQUIRED OR APPROVED BY THE RELEVANT AUTHORITIES. AREAS ARE APPROXIMATE MEASUREMENTS ONLY AND ARE SUBJECT TO FINAL SURVEY. PLANS ARE NOT DRAWN TO SCALE AND DO NOT FORM PART OF THE CONTRACT.