

— *Spacious* —  
LIVING AREAS DINING

# VISTA

HOMES

3, 4, 5  
BEDROOM

— *Wide Frontage* —



# VISTA

## HOMES

An extended living and dining room with a balcony means that the pride of a Vista Home is its view. Wide living hall frontage and bedrooms maximizes the view you wake up every morning to with adoration.

Unleash your creativity with selected 4 metre high-ceiling units. You can either install full height storage display, convert it into a vertical library or install signature long pendant light or chandeliers to embrace a touch of luxury.

All bedrooms are crafted with space in mind to accommodate Queen size beds. A luxury everyone craves for.



**PES** | Private Enclosed Space

**AC LEDGE** | Aircon Ledge

**DB** | Distribution Board

**ST** | Store



**VISTA**  
3 Bedroom

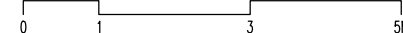
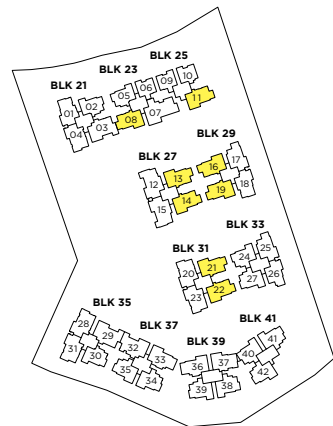
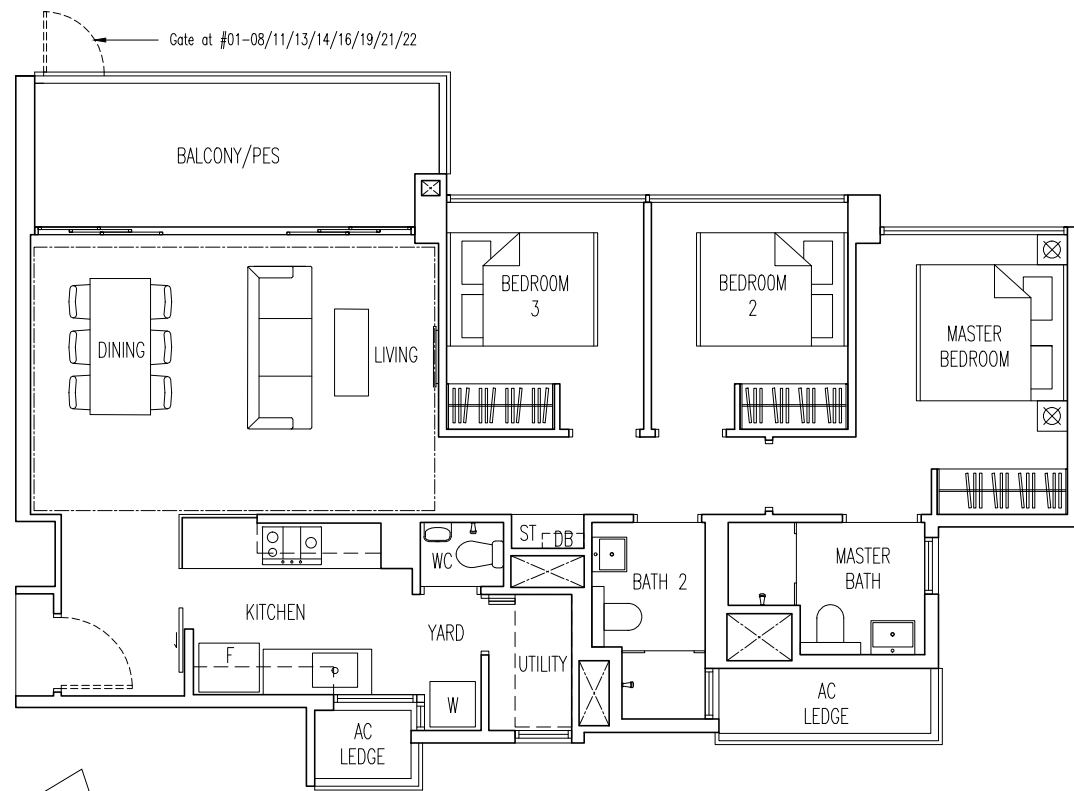
**B6**

99 sqm / 1066 sqft

- #01-08 to #16-08
- #01-11 to #16-11\*
- #01-13 to #15-13
- #01-14 to #16-14\*
- #01-16 to #16-16\*
- #01-19 to #16-19
- #01-21 to #16-21
- #01-22 to #15-22\*

\* Mirror Image

--- Line denotes high ceiling at #16-08/11/14/16/19/21

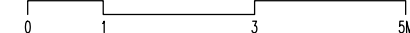
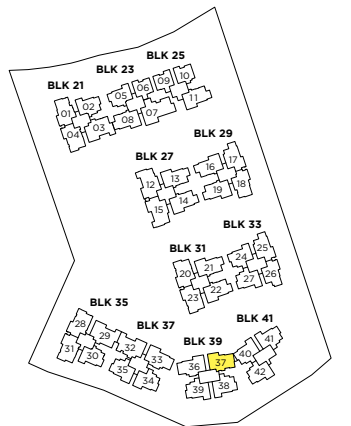
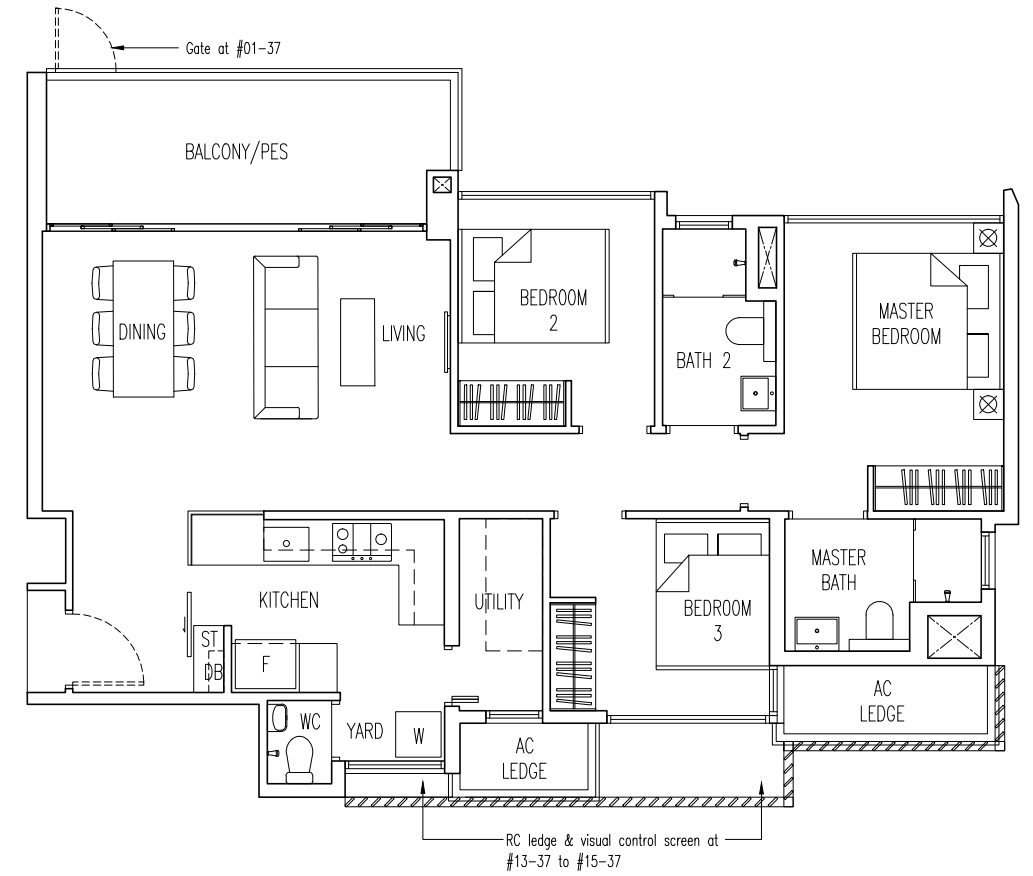


**VISTA**  
3 Bedroom

**B7**

99 sqm / 1066 sqft

- #01-37 to #15-37



**VISTA**  
3 + Universal

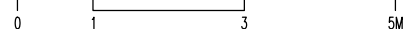
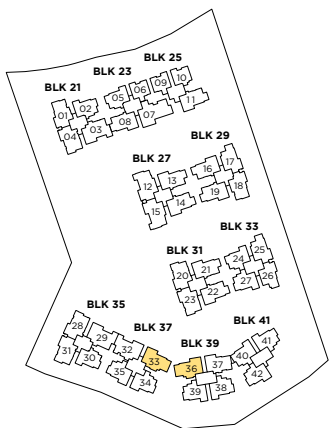
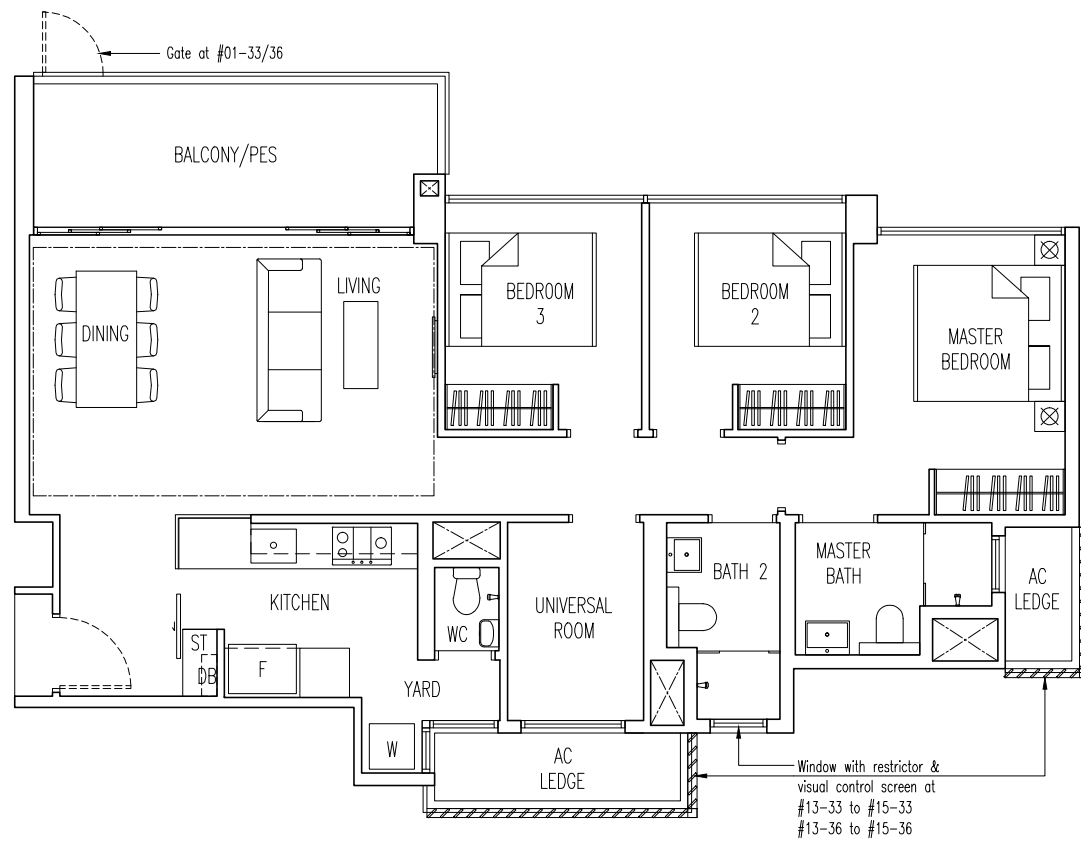
**C2**

103 sqm / 1109 sqft

#01-33 to #15-33  
#01-36 to #15-36\*

\* Mirror Image

--- Line denotes  
high ceiling at #15-36



**VISTA**  
4 Bedroom

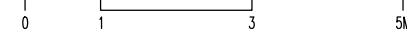
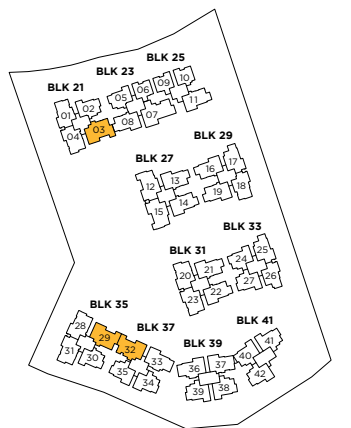
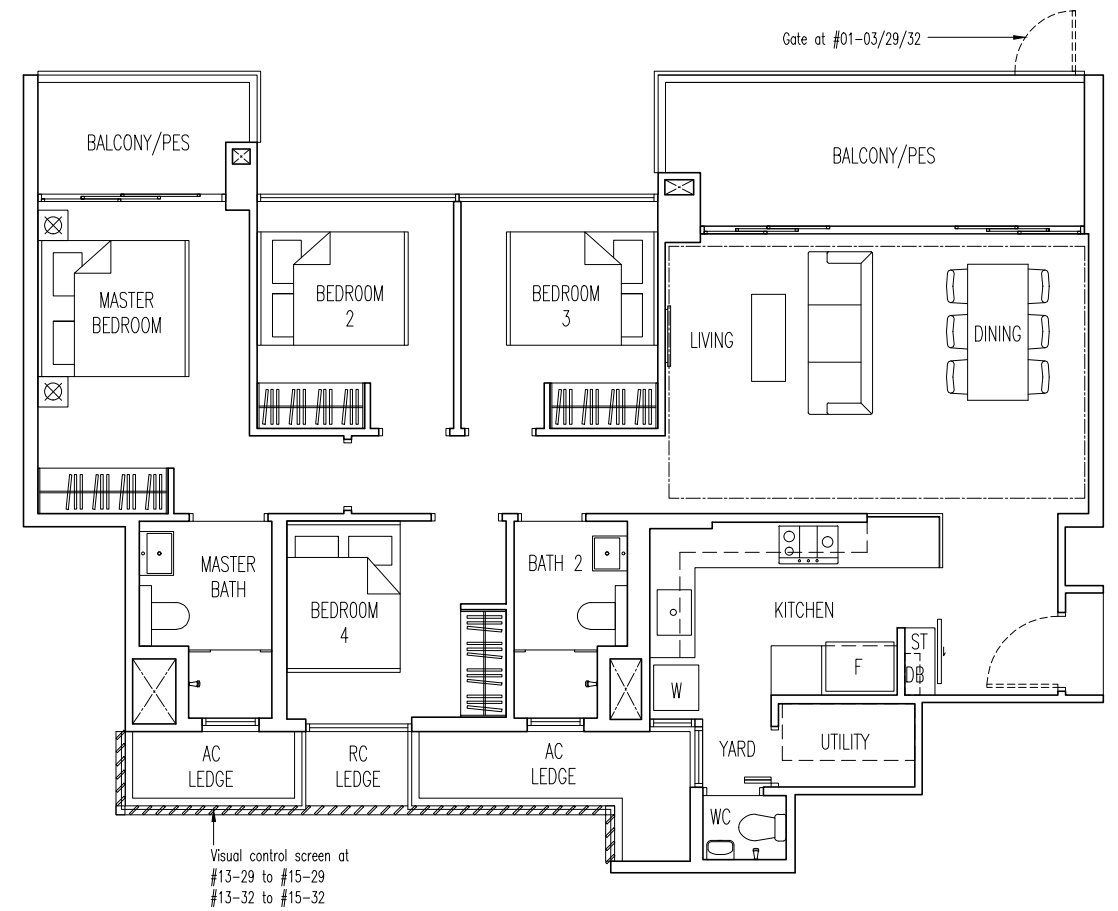
**D2**

118 sqm / 1270 sqft

#01-03 to #16-03  
#01-29 to #15-29\*  
#01-32 to #15-32

\* Mirror Image

--- Line denotes  
high ceiling at #16-03, #15-32



# VISTA

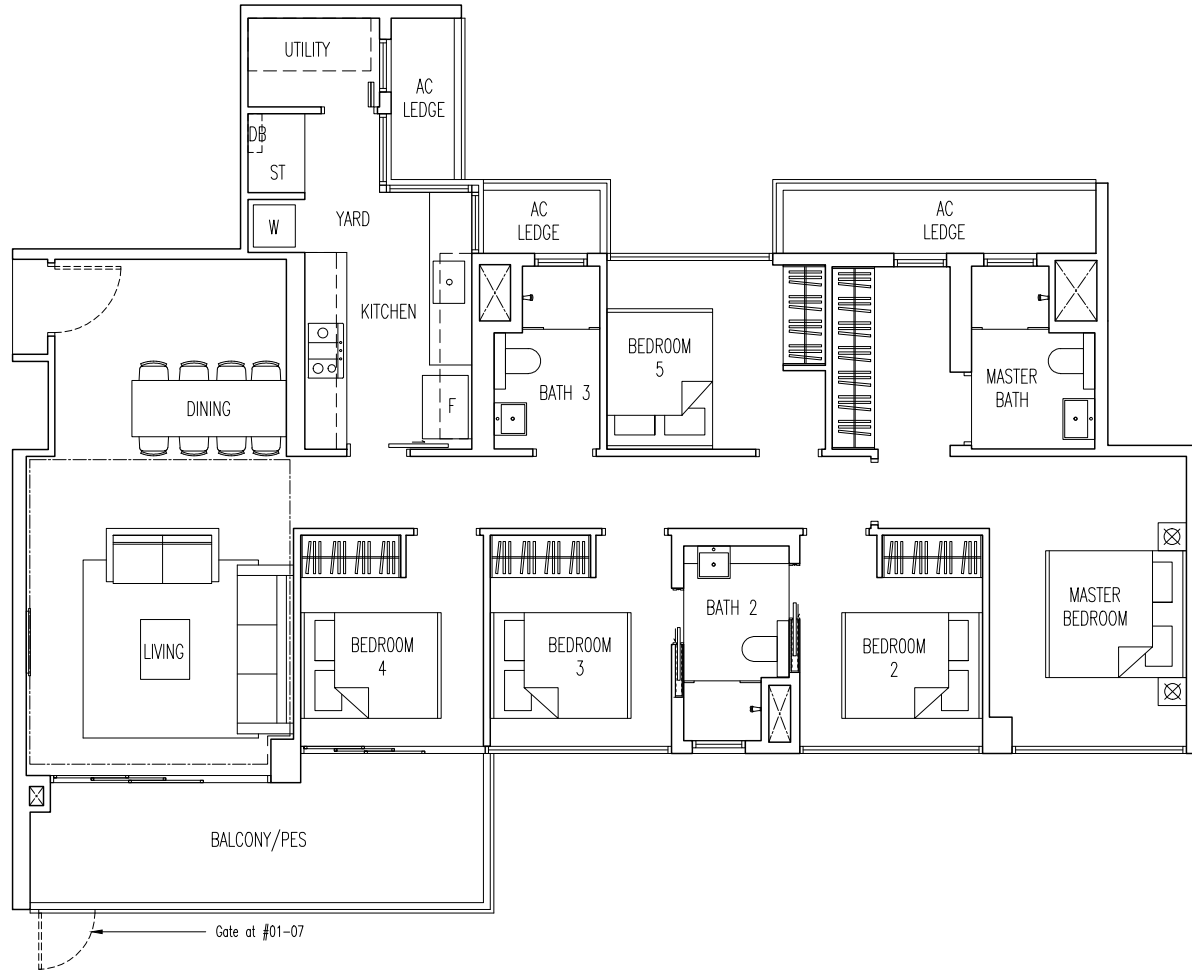
## 5 Bedroom

E1

144 sqm / 1550 sqft

#01-07 to #16-07

--- Line denotes  
high ceiling at #16-07



## NOTES

