



# STARS OF KOVAN

**Huttons**<sup>®</sup>  
realestategroup

# Floor Plans

**1 Bedroom**  
**#04-14 to #16-14**  
**47 sqm / 506 sqft**

Draft

Master Bath fitted with full marble floor, wall and vanity counter top

COMMUNAL PLANTER  
(AT 6TH, 9TH, 12TH & 15TH STOREY)

Spacious Master Bedroom with separate his & hers wardrobe.

COMMUNAL LANDSCAPE TERRACE  
(AT 6TH, 9TH, 12TH & 15TH STOREY)

A/C LEDGE

KITCHEN

DINING

HS

Efficient open concept with fully equipped branded kitchen appliances including fridge & washer cum dryer

MASTER BEDROOM

LIVING

Efficient Living Room Layout

BALCONY

All areas stated herein include pes, balcony, a/c ledge, entrance foyer, spa pool and voids where applicable.  
All areas and measurements stated herein are approximate and subject to adjustments on final survey

# Floor Plans

**2 Bedroom**  
#04-25 - #16-25  
71 sqm / 764 sqft

Draft

Master Bath fitted with full marble floor, wall and vanity counter top

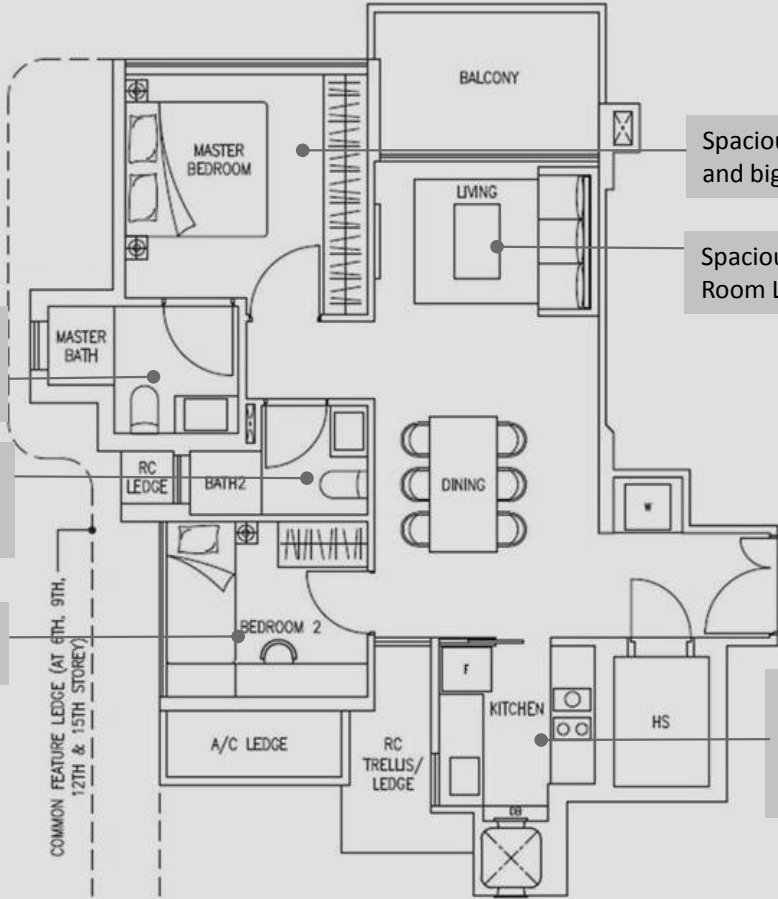
Common Bath fitted with marble floor and vanity counter top

Efficient Bedroom Layout

Spacious Master Bedroom and big wardrobe.

Spacious Living and Dining Room Layout

Efficient kitchen fully fitted with branded kitchen appliances including fridge & washer cum dryer



KEYPLAN

SCALE: 1:100

All areas stated herein include pes, balcony, a/c ledge, entrance foyer, spa pool and voids where applicable.  
All areas and measurements stated herein are approximate and subject to adjustments on final survey

# Floor Plans

**2 Bedroom**  
**#04-05 - #16-05**  
**69 sqm / 743 sqft**

Draft

Common Bath fitted with marble floor and vanity counter top

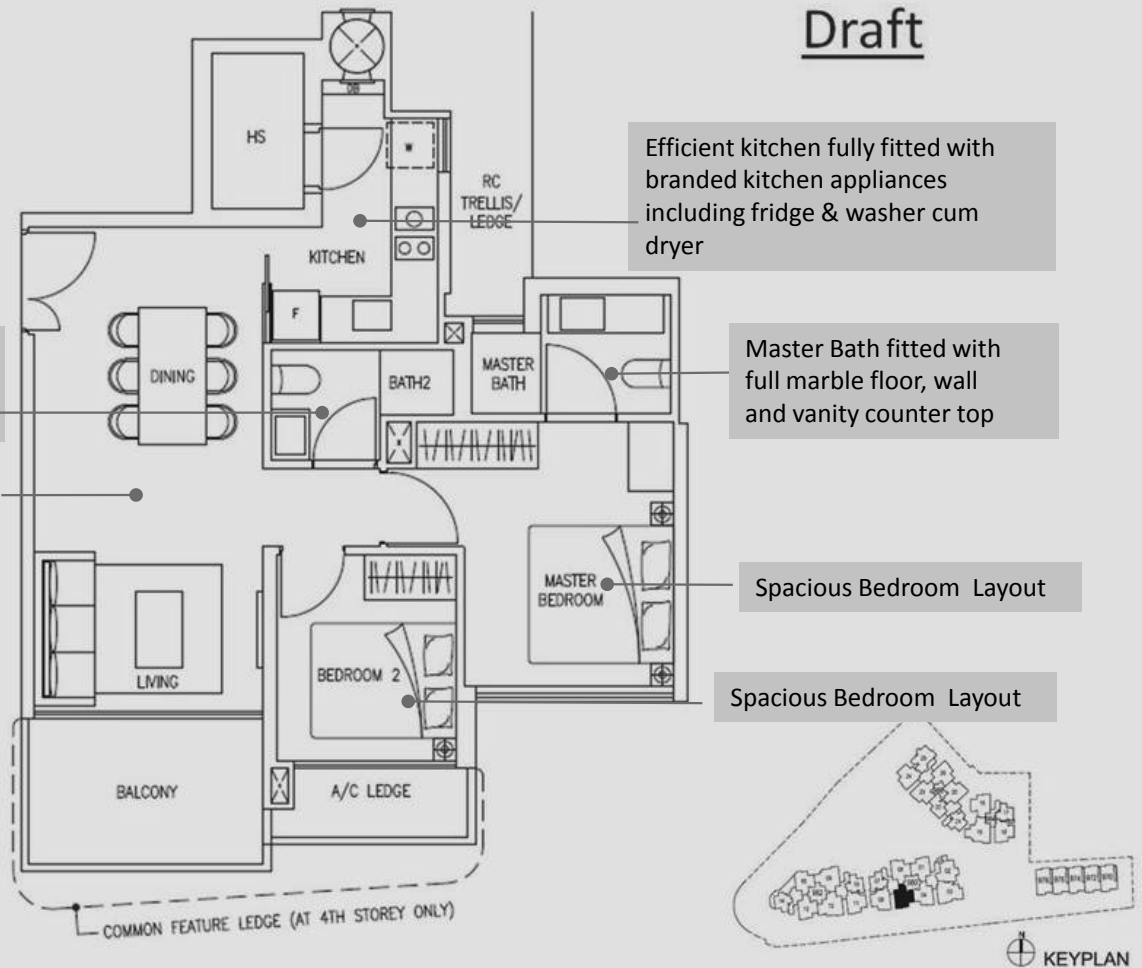
Spacious Living and Dining Room Layout

Efficient kitchen fully fitted with branded kitchen appliances including fridge & washer cum dryer

Master Bath fitted with full marble floor, wall and vanity counter top

Spacious Bedroom Layout

Spacious Bedroom Layout

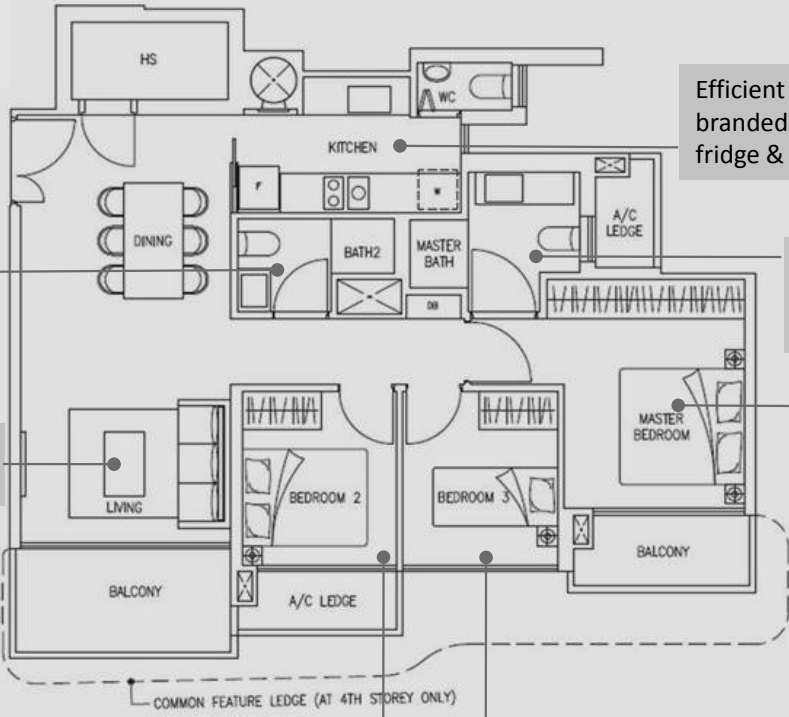


All areas stated herein include pes, balcony, a/c ledge, entrance foyer, spa pool and voids where applicable.  
All areas and measurements stated herein are approximate and subject to adjustments on final survey

# Floor Plans

**3 Bedroom**  
**#04-03 to #16-03**  
**89 sqm / 958 sqft**

Draft



Common Bath fitted with marble floor and vanity counter top

Efficient kitchen fully fitted with branded kitchen appliances including fridge & washer cum dryer

Master Bath fitted with full marble floor, wall and vanity counter top

Spacious Living and Dining Room Layout

Spacious Master bedroom and big wardrobe.

Spacious bedroom and big wardrobe.



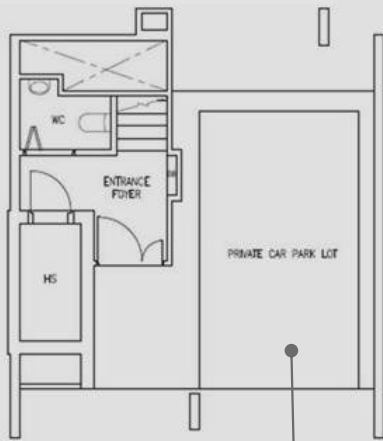
All areas stated herein include pes, balcony, a/c ledge, entrance foyer, spa pool and voids where applicable.  
All areas and measurements stated herein are approximate and subject to adjustments on final survey

# Floor Plans

**House 972 -978**  
**Strata Terrace Unit**  
**170 sqm / 1830 sqft**

Draft

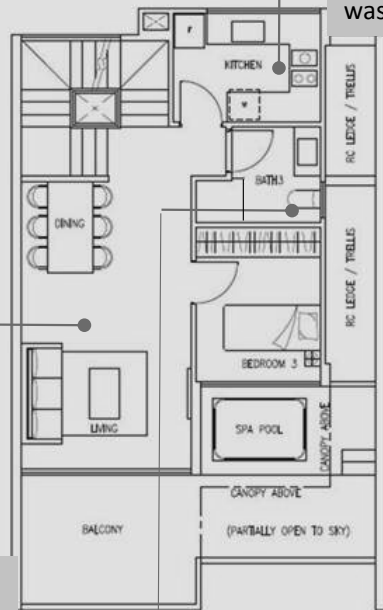
Efficient kitchen fully fitted with branded kitchen appliances including fridge & washer cum dryer



1ST STOREY

Your Exclusive Private Car Park Lot

Spacious Living and Dining Room Layout

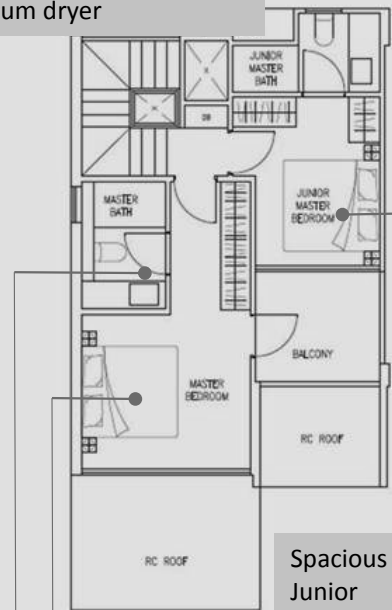


2ND STOREY

Master Bath fitted with full marble floor, wall and vanity counter top

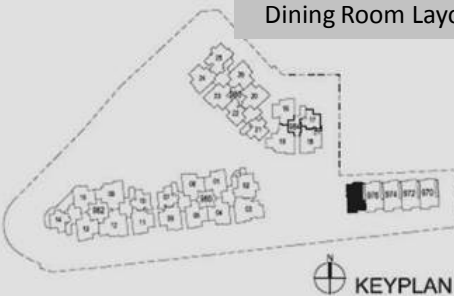
Common Bath fitted with marble floor and vanity counter top

Spacious Master bedroom and big wardrobe.



3RD STOREY

Spacious Junior Master Bedroom with en-suite bathroom and two separate wardrobes.



KEYPLAN

All areas stated herein include pes, balcony, a/c ledge, entrance foyer, spa pool and voids where applicable.  
All areas and measurements stated herein are approximate and subject to adjustments on final survey