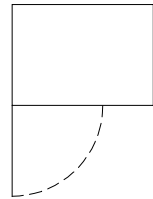


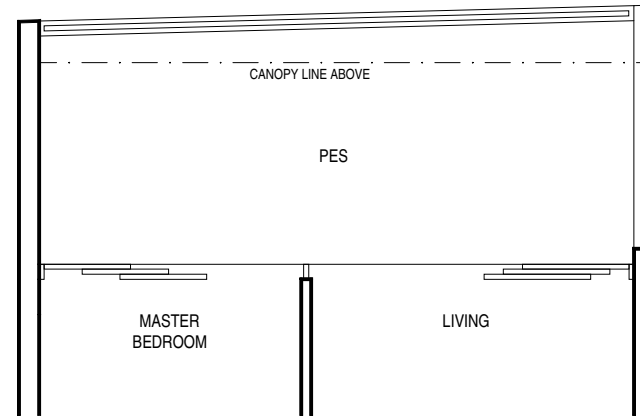
**TYPE A1 (PES)  
1 BEDROOM**

51 sq.m. / 549 sq.ft.

#04-01



unit #04-01: including air-con condensers of 1 sq.m./ 11 sq.ft. accessory lot located on 3rd floor podium carpark

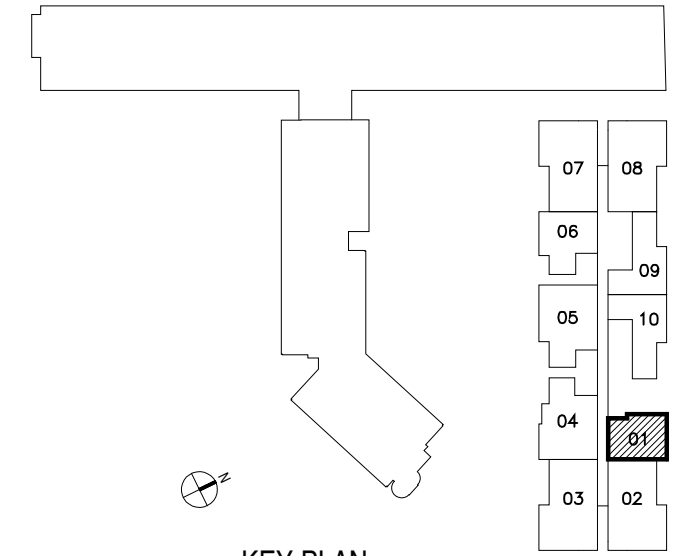
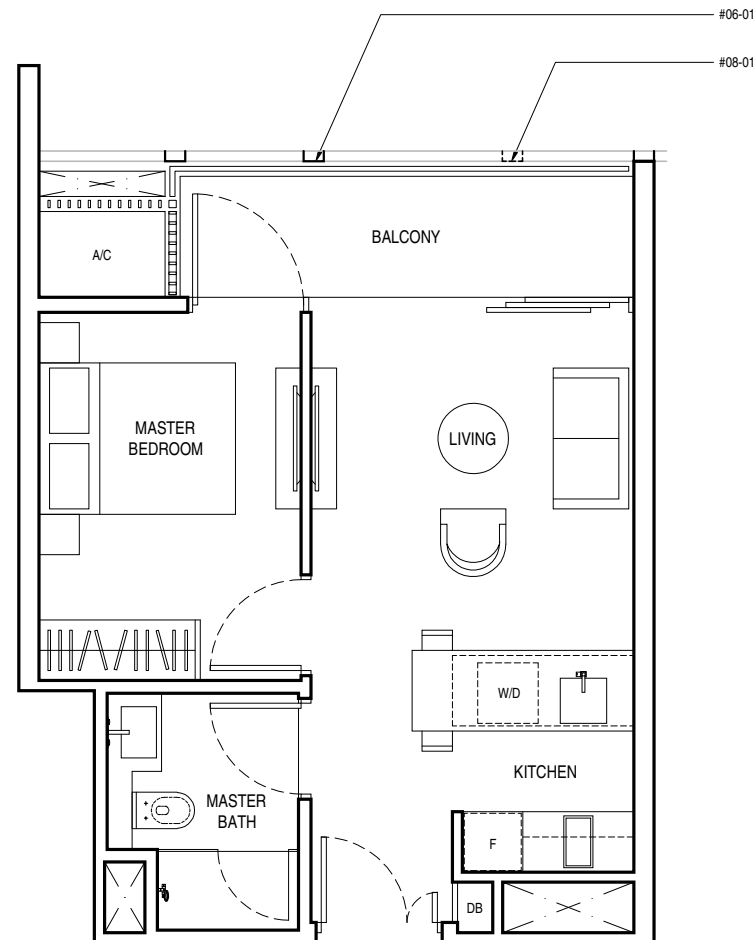


**TYPE A1  
1 BEDROOM**

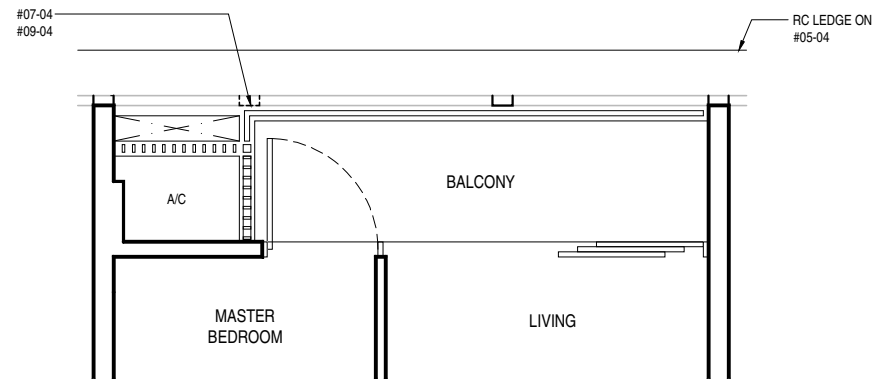
43 sq.m. / 463 sq.ft.

#06-01

#08-01



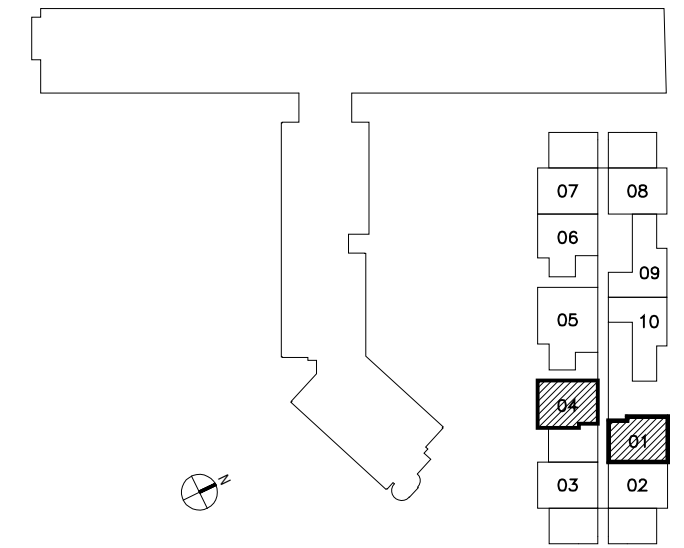
KEY PLAN



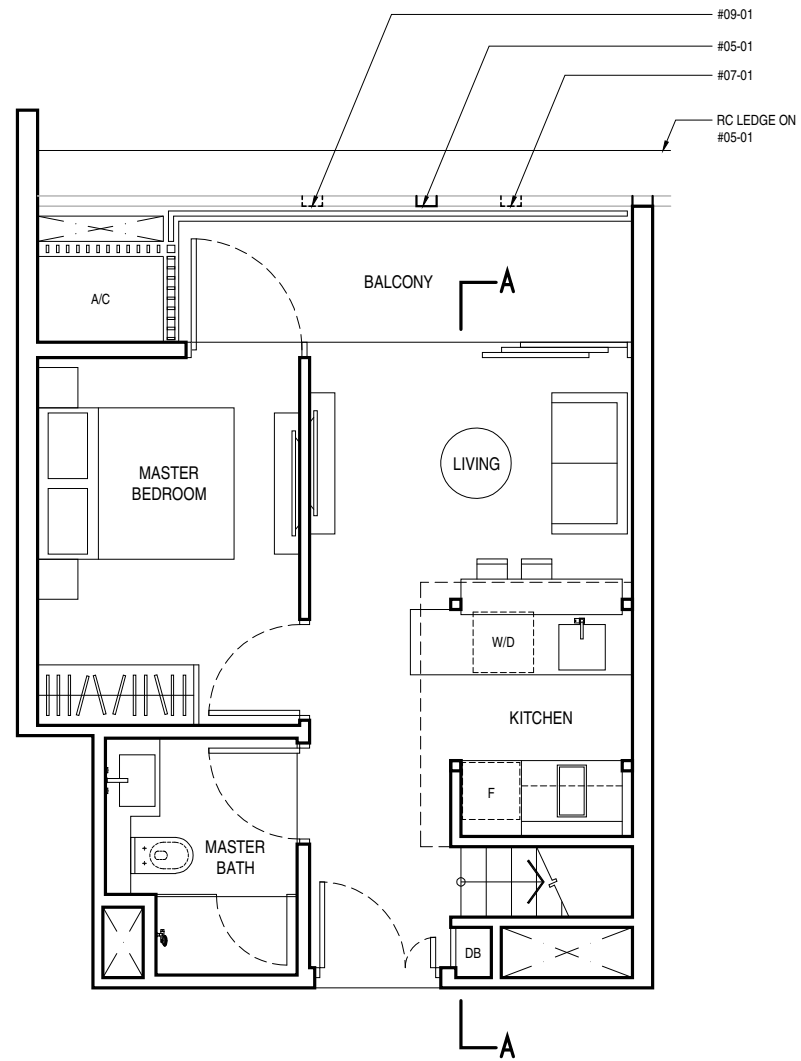
**TYPE A1b  
1 BEDROOM**

43 sq.m. / 463 sq.ft.

#05-04  
#07-04  
#09-04



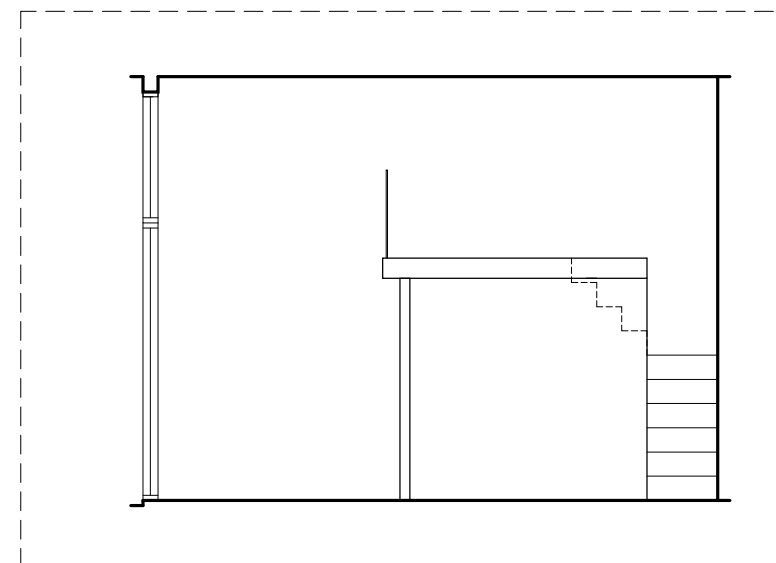
**KEY PLAN**



**TYPE A1b  
1 BEDROOM**

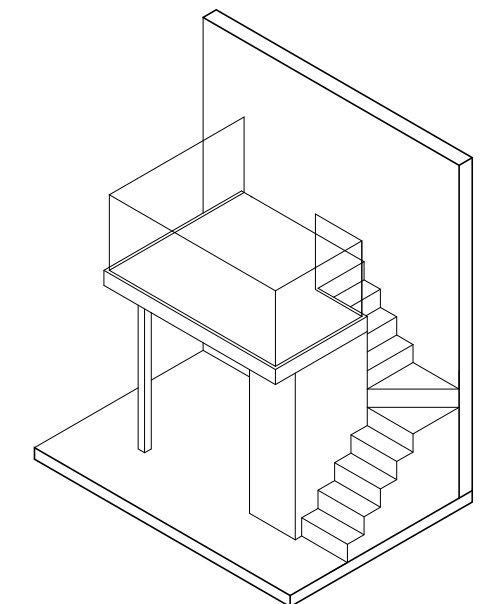
43 sq.m. / 463 sq.ft.

#05-01  
#07-01  
#09-01

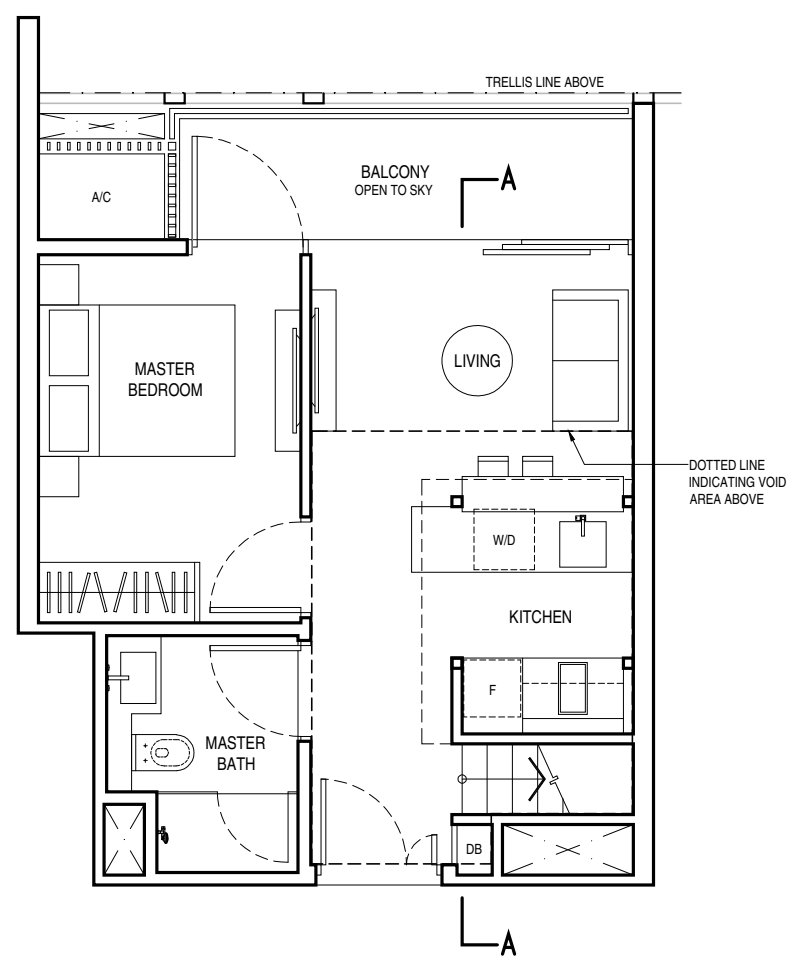
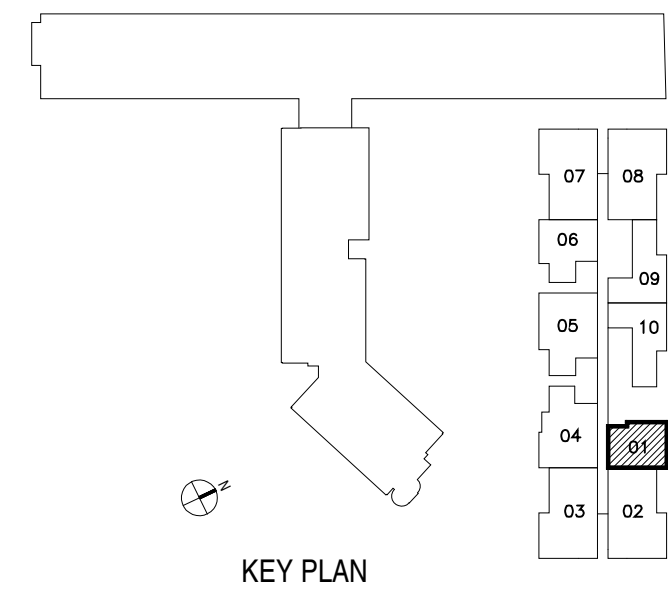


**PART SECTION A-A  
FLOOR TO FLOOR 4.20m**

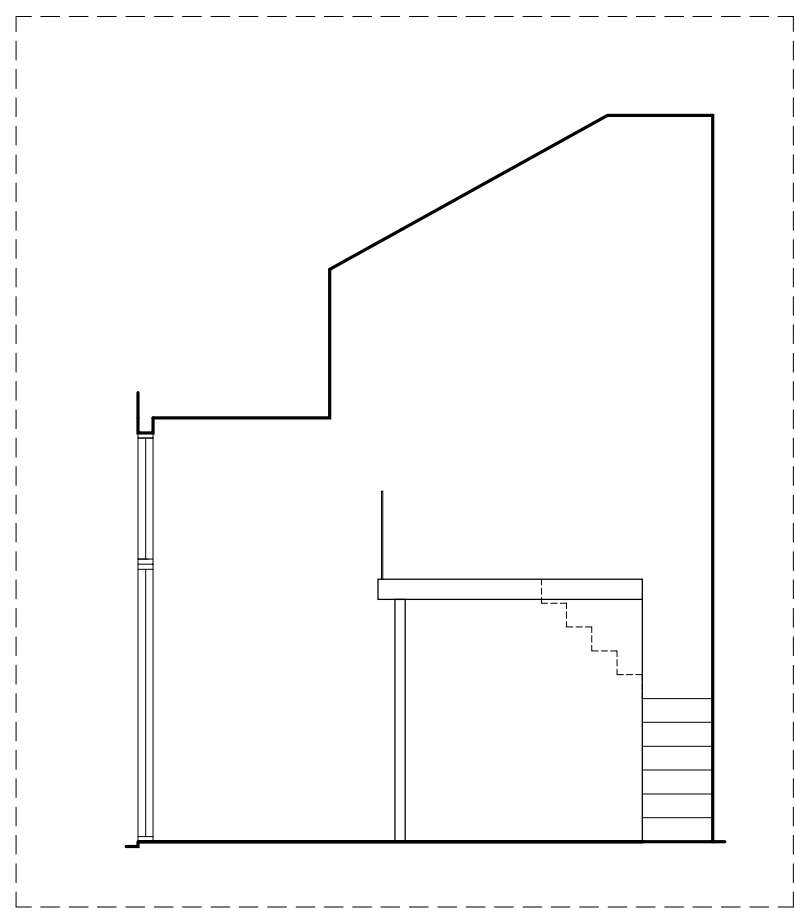
TYPE A1b



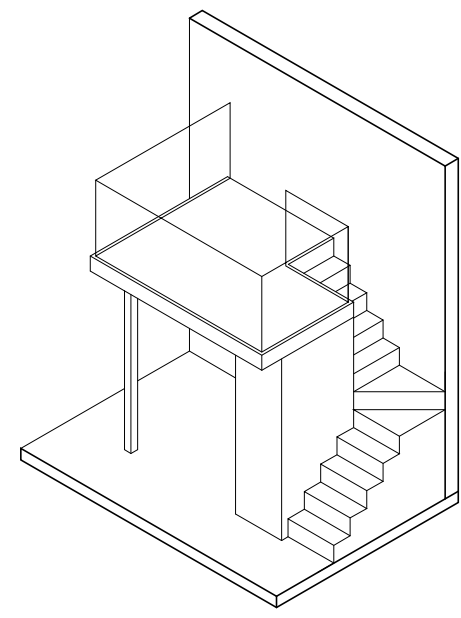
**ISOMETRIC VIEW OF  
FURNITURE DECK**



**TYPE A1c**  
**1 BEDROOM**  
 57 sq.m. / 614 sq.ft. (including void area of 14 sq.m./151 sq.ft. above kitchen)  
 #10-01



**PART SECTION A-A** TYPE A1c  
 FLOOR TO ROOF VARIES FROM 4.20m TO 7.20m

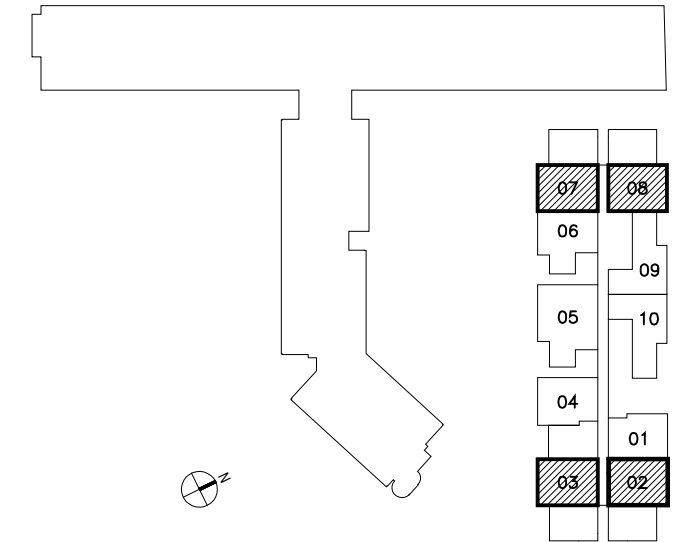
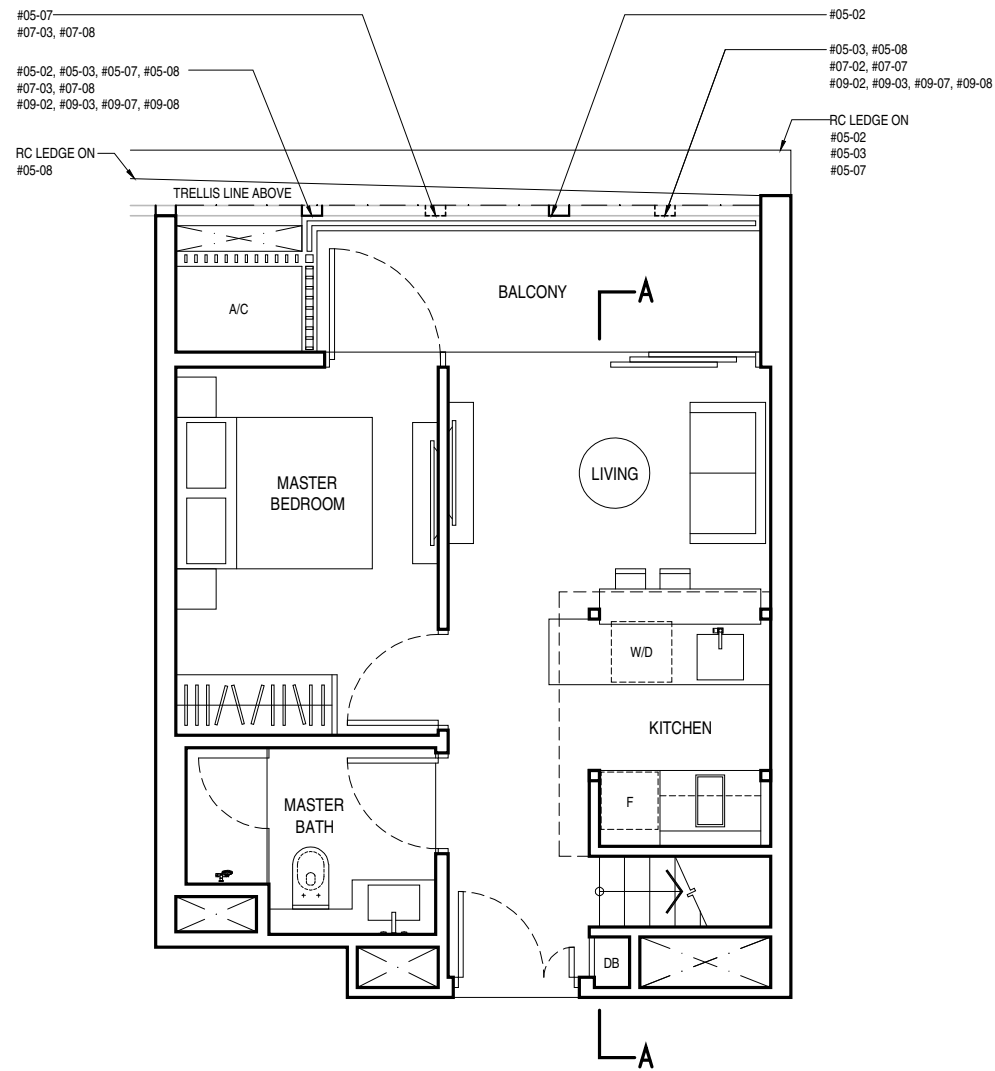


**ISOMETRIC VIEW OF FURNITURE DECK**

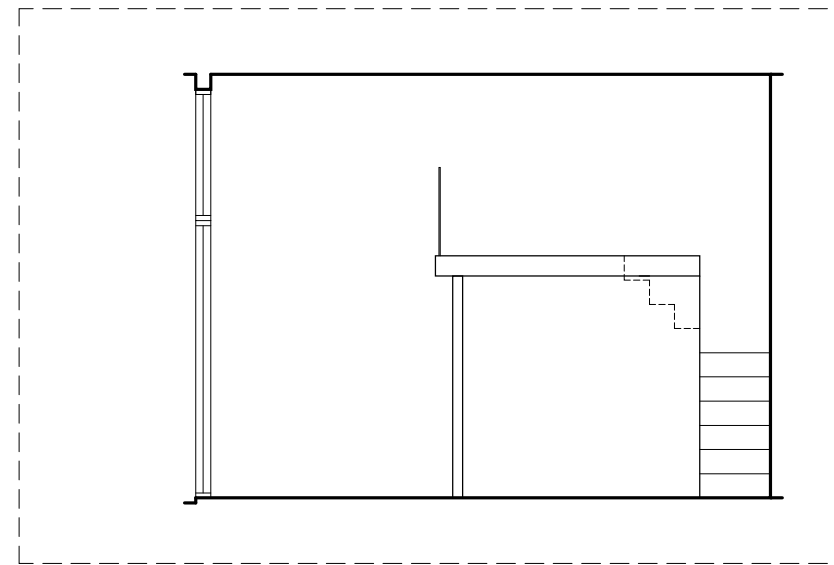
**TYPE A2b  
1 BEDROOM**

43 sq.m. / 463 sq.ft.

- #05-02 #05-03 (MIRROR)
- #05-07 #05-08 (MIRROR)
- #07-02 #07-03 (MIRROR)
- #07-07 #07-08 (MIRROR)
- #09-02 #09-03 (MIRROR)
- #09-07 #09-08 (MIRROR)

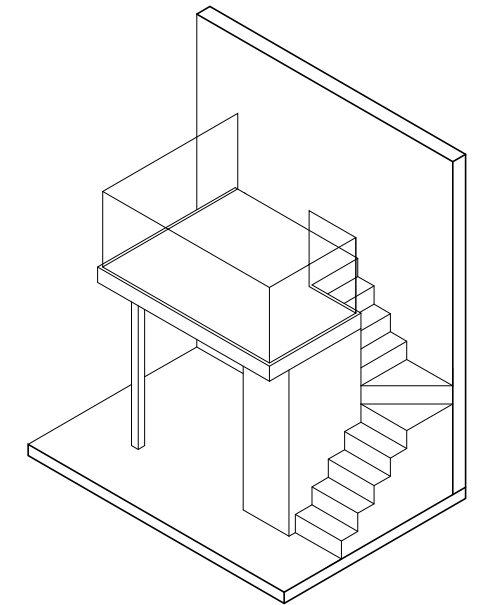


**KEY PLAN**



**PART SECTION A-A**  
FLOOR TO FLOOR 4.20m

TYPE A2b

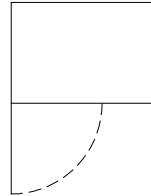


**ISOMETRIC VIEW OF  
FURNITURE DECK**

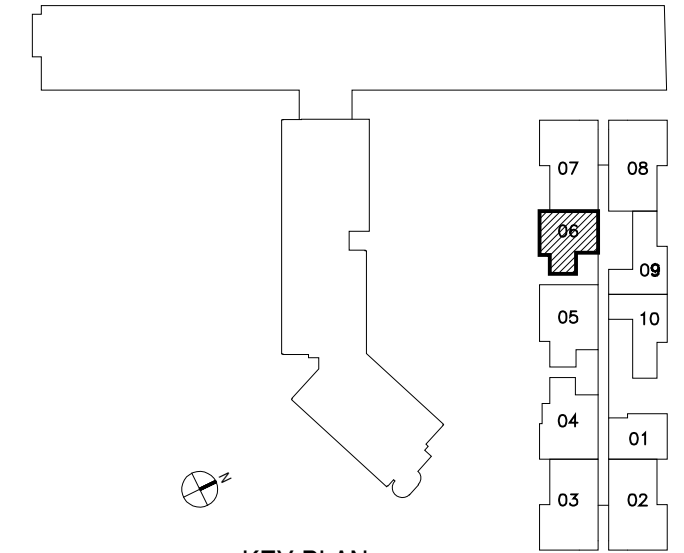
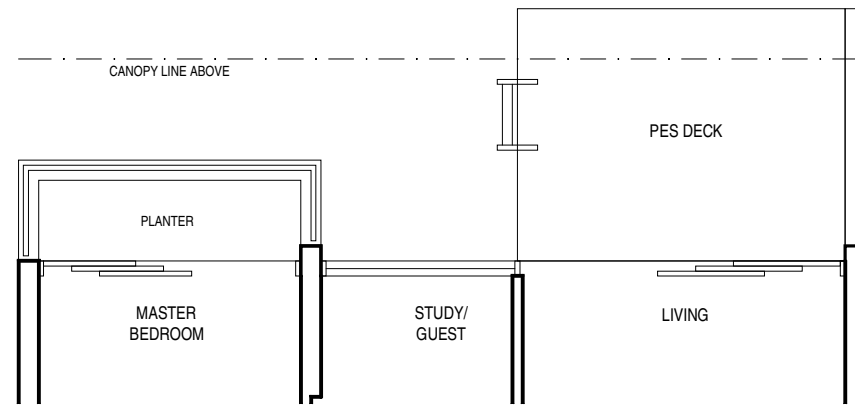
**TYPE B1 (PES)**  
**1 BEDROOM + STUDY / GUEST**

54 sq.m. / 581 sq.ft.

#04-06



unit #04-06: including air-con condensers  
of 1 sq.m./ 11 sq.ft.  
accessory lot located  
on 3rd floor podium carpark

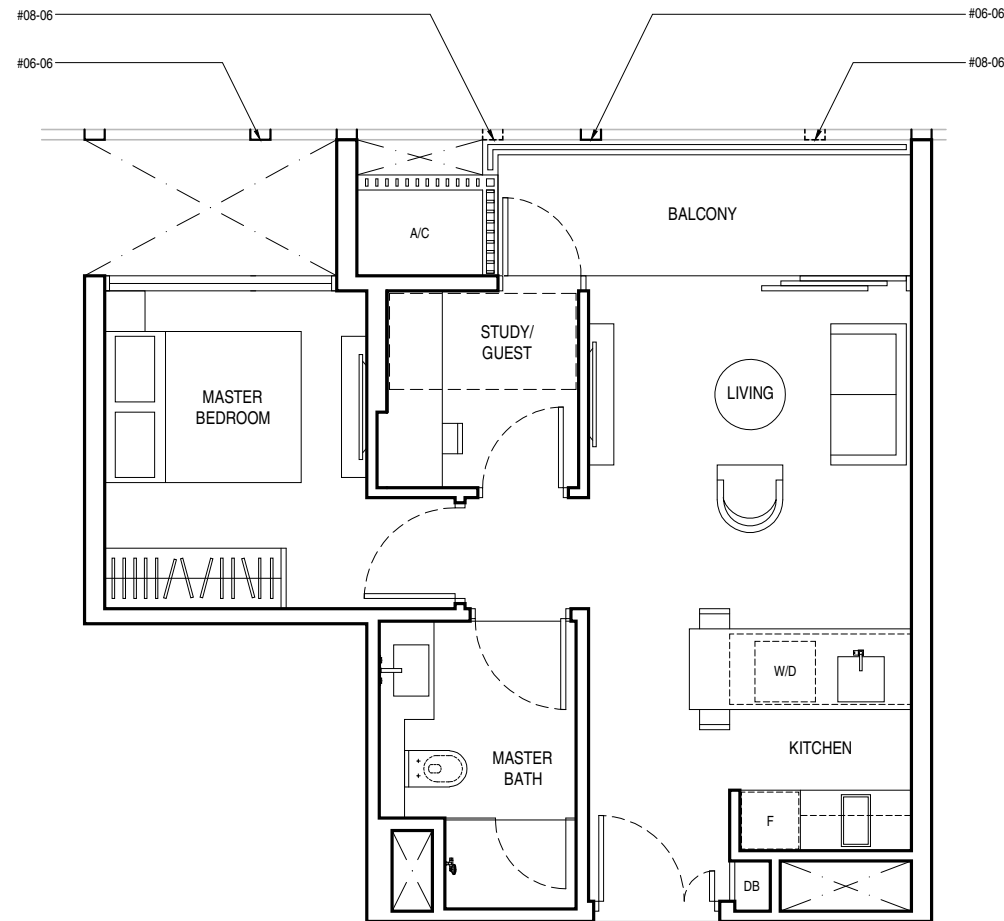


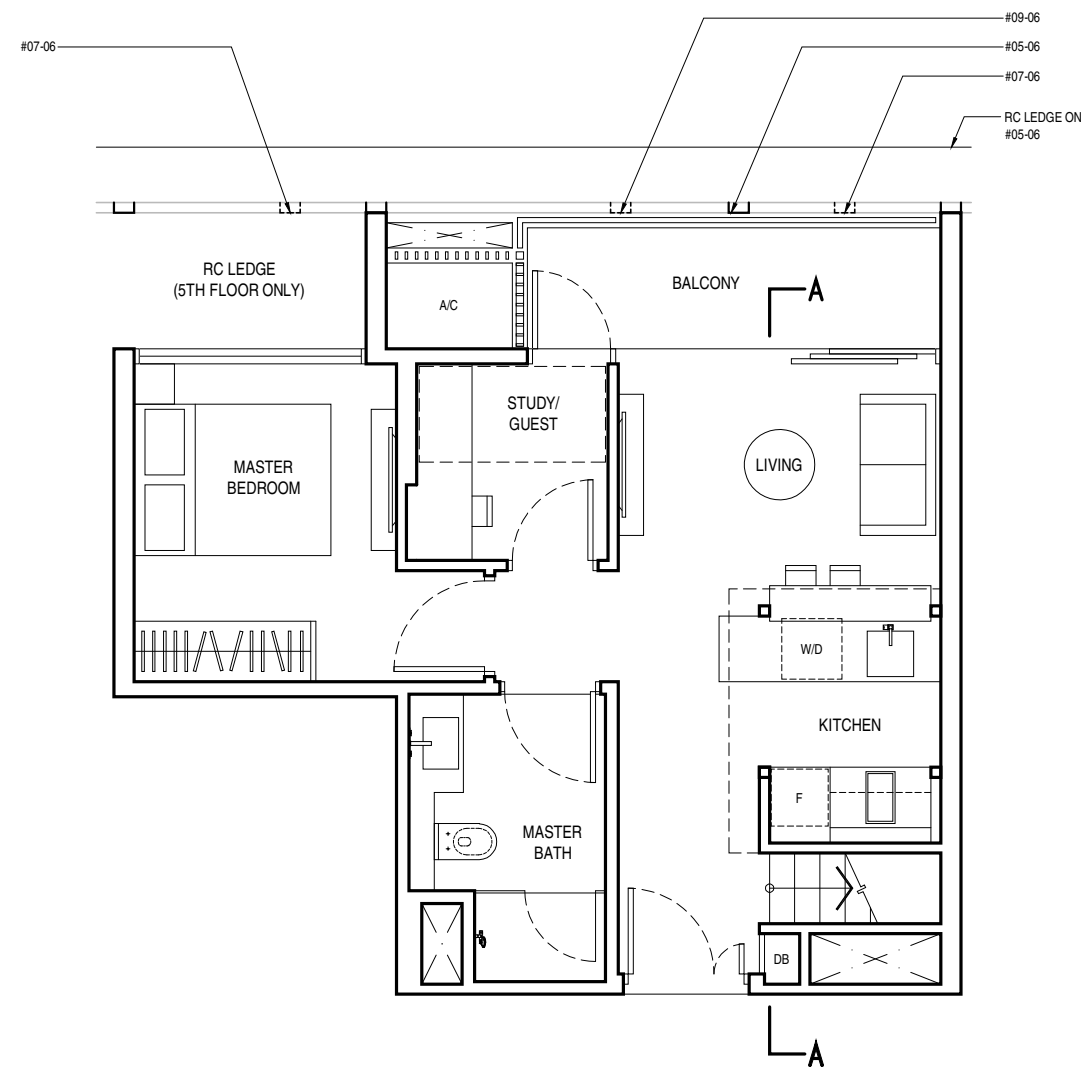
KEY PLAN

**TYPE B1**  
**1 BEDROOM + STUDY / GUEST**

49 sq.m. / 527 sq.ft.

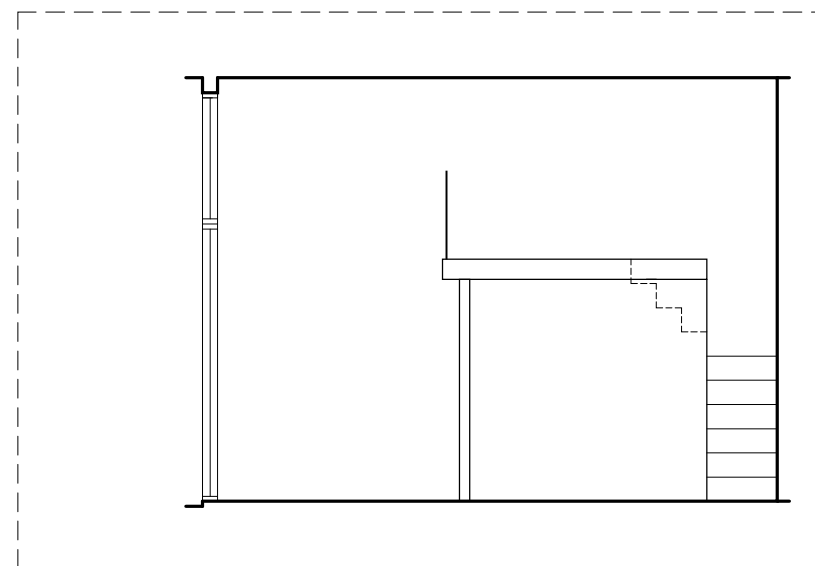
#06-06  
#08-06





**TYPE B1b**  
**1 BEDROOM + STUDY / GUEST**  
 49 sq.m. / 527 sq.ft.

#05-06  
 #07-06  
 #09-06

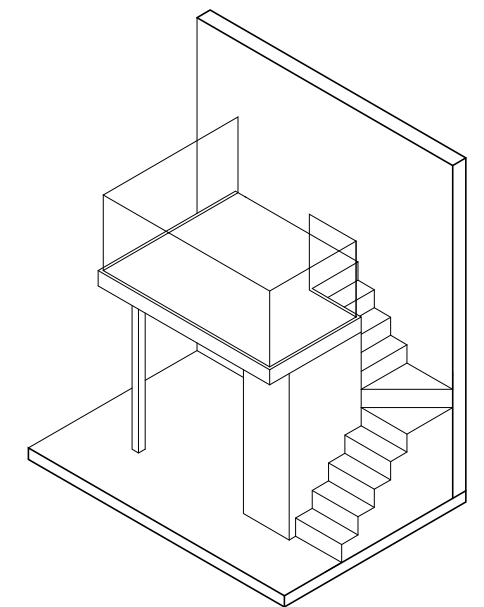


**PART SECTION A-A**  
 FLOOR TO FLOOR 4.20m

TYPE B1b



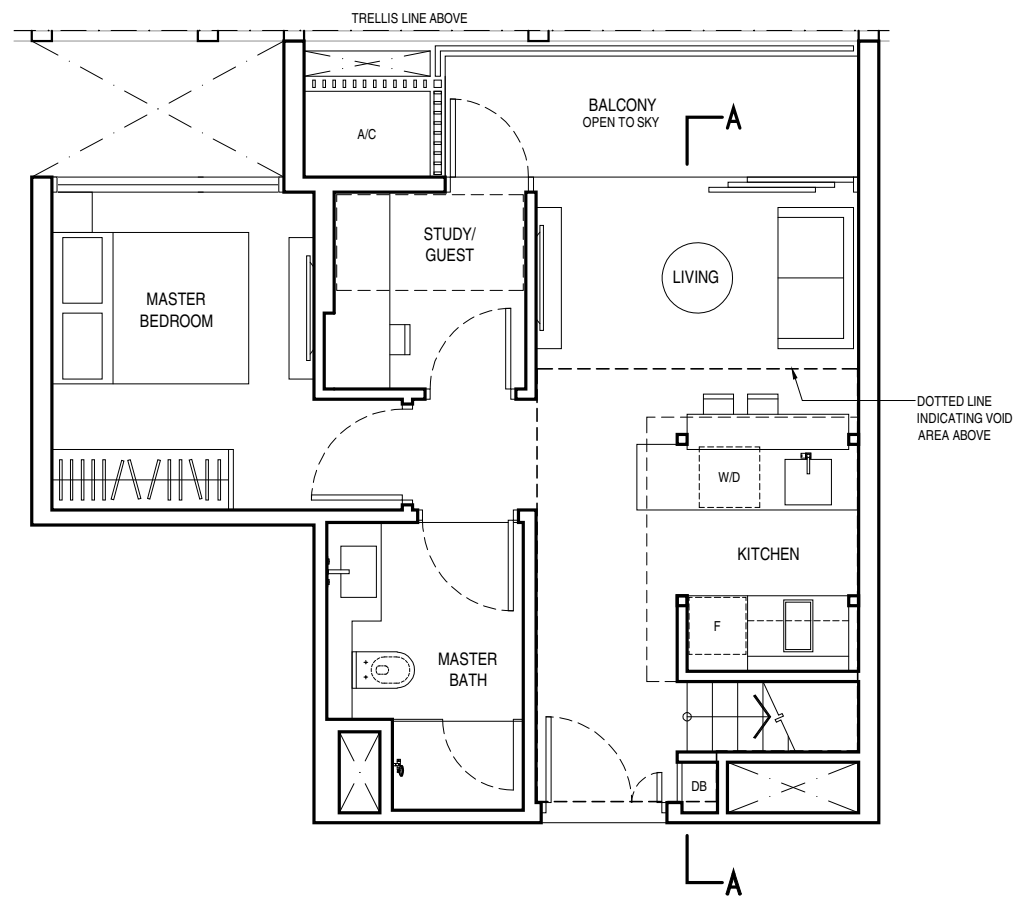
**KEY PLAN**



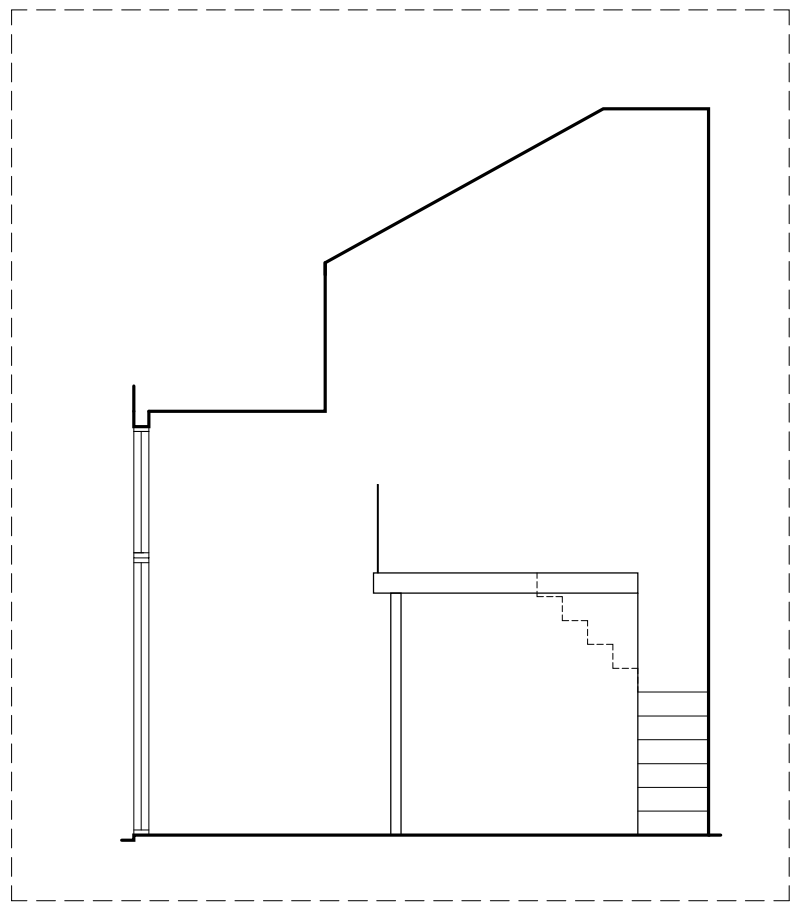
**ISOMETRIC VIEW OF FURNITURE DECK**



KEY PLAN

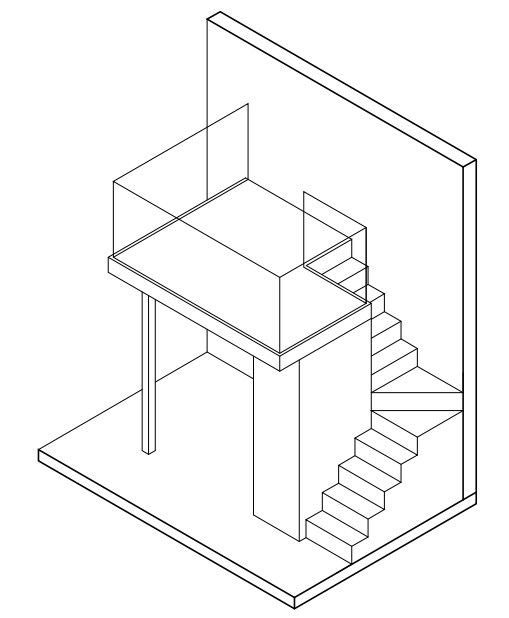


**TYPE B1c**  
**1 BEDROOM + STUDY / GUEST**  
 63 sq.m. / 678 sq.ft. (including void area of 14 sq.m./151 sq.ft. above kitchen)  
 #10-06



**PART SECTION A-A**  
 FLOOR TO ROOF VARIES FROM 4.20m TO 7.20m

TYPE B1c

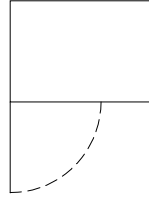


**ISOMETRIC VIEW OF FURNITURE DECK**

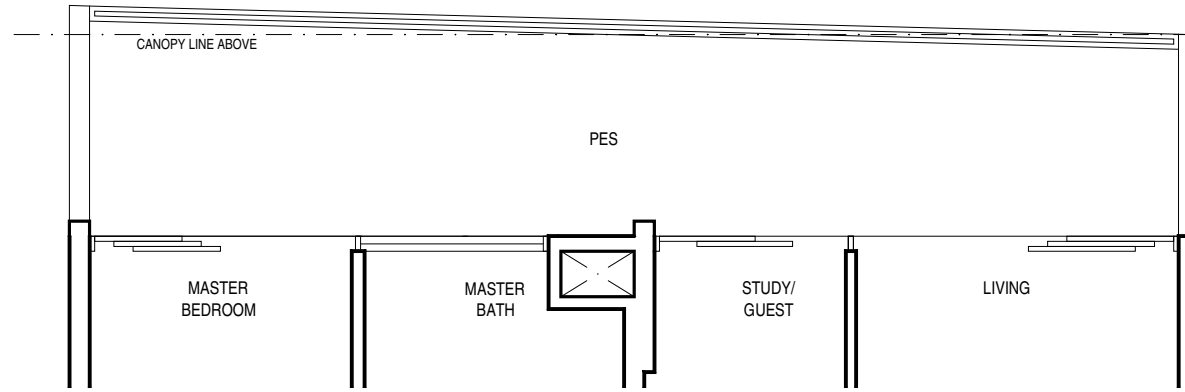
**TYPE B2-2 (PES)**  
**1 BEDROOM + STUDY / GUEST**

69 sq.m. / 743 sq.ft.

#04-10 (MIRROR)



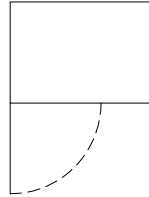
unit #04-10: including air-con condensers of 1 sq.m. / 11 sq.ft. accessory lot located on 3rd floor podium carpark



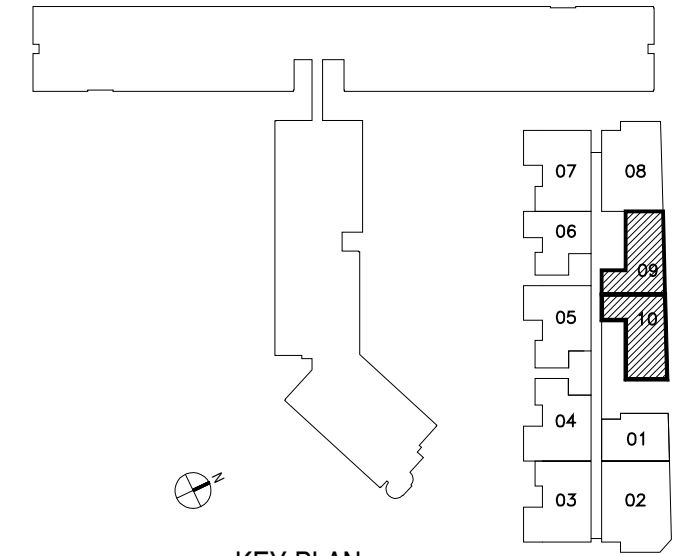
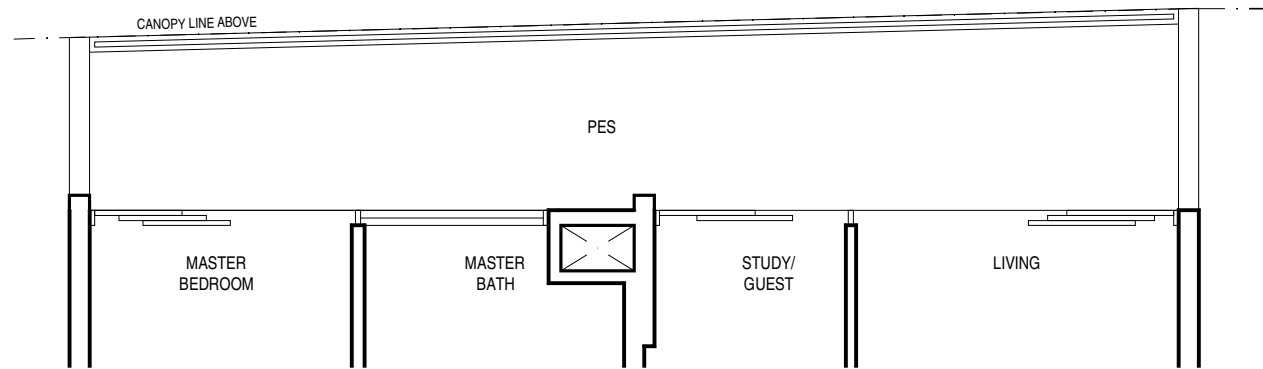
**TYPE B2-1 (PES)**  
**1 BEDROOM + STUDY / GUEST**

67 sq.m. / 721 sq.ft.

#04-09



unit #04-09: including air-con condensers of 1 sq.m. / 11 sq.ft. accessory lot located on 3rd floor podium carpark

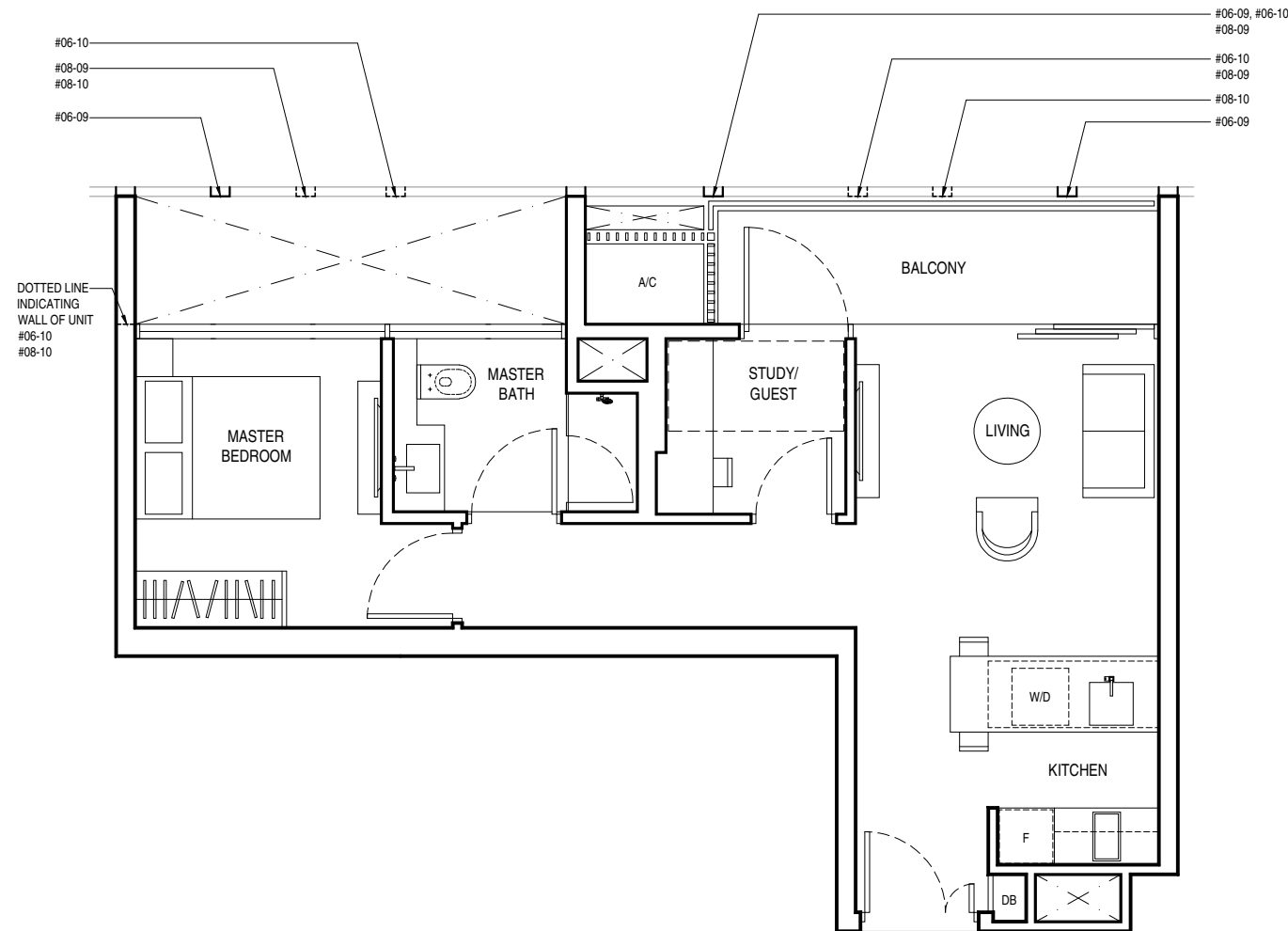


KEY PLAN

**TYPE B2**  
**1 BEDROOM + STUDY / GUEST**

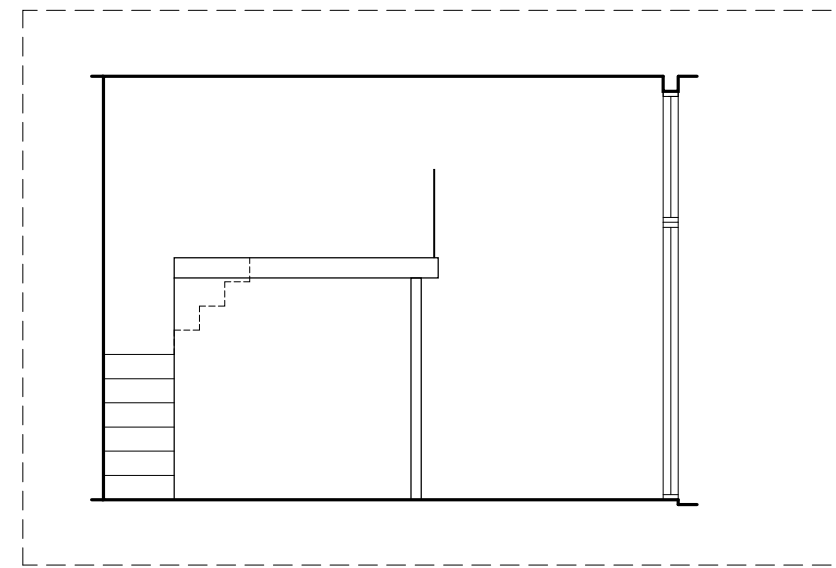
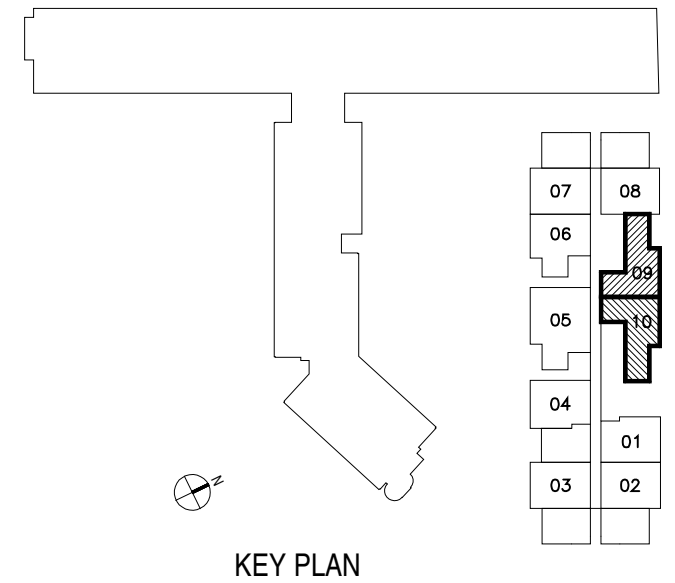
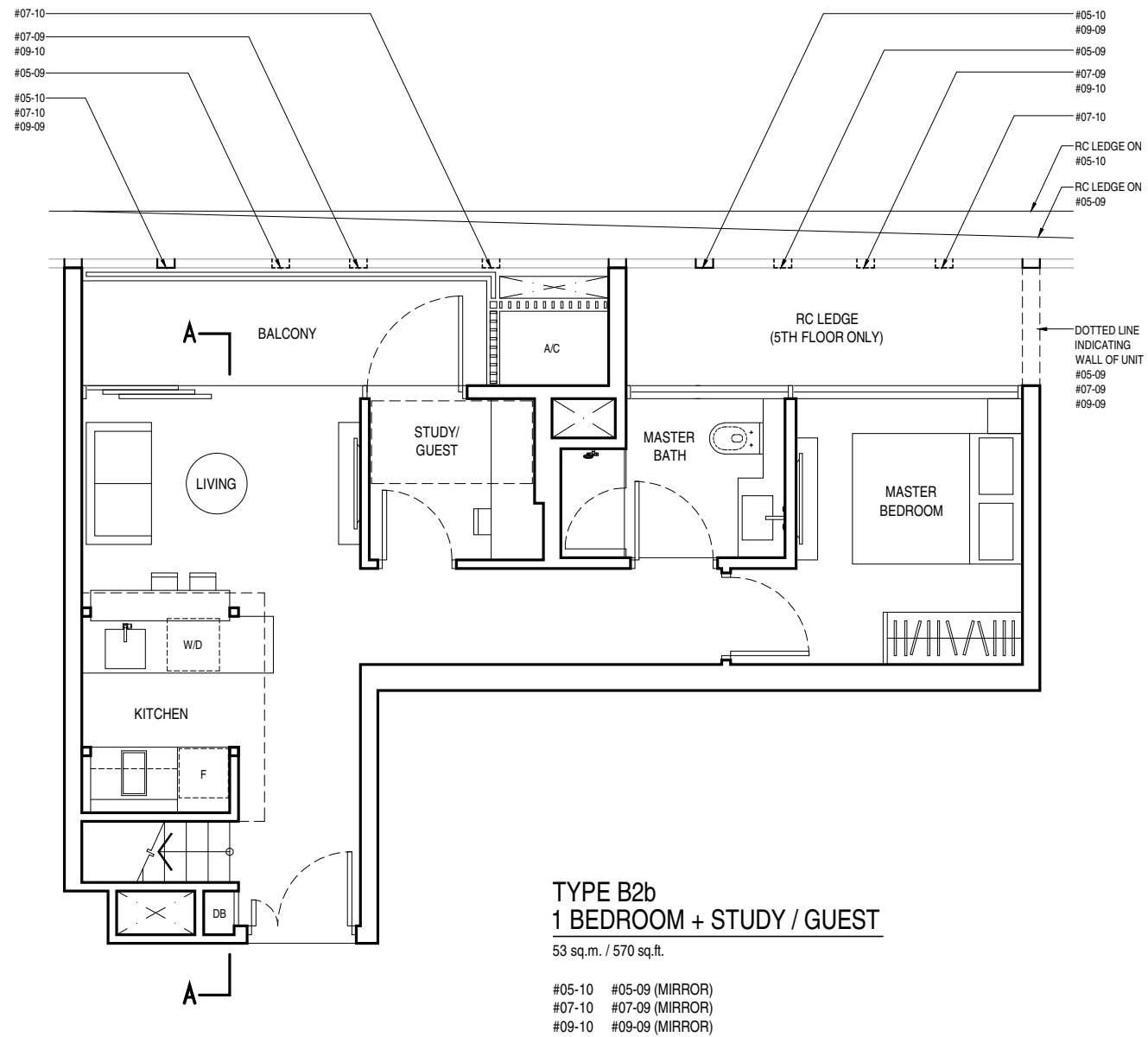
53 sq.m. / 570 sq.ft.

#06-09 #06-10 (MIRROR)  
 #08-09 #08-10 (MIRROR)

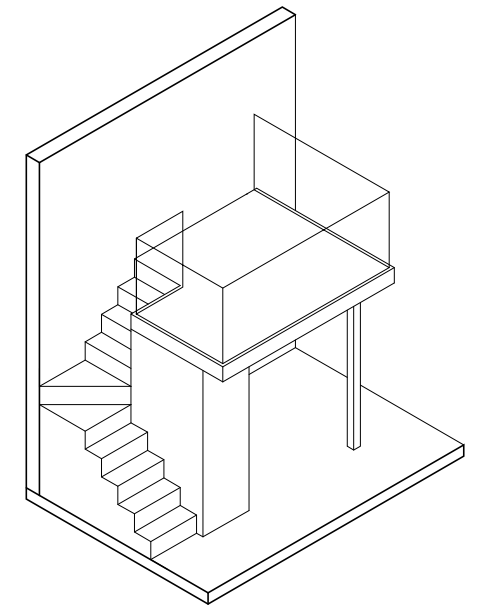


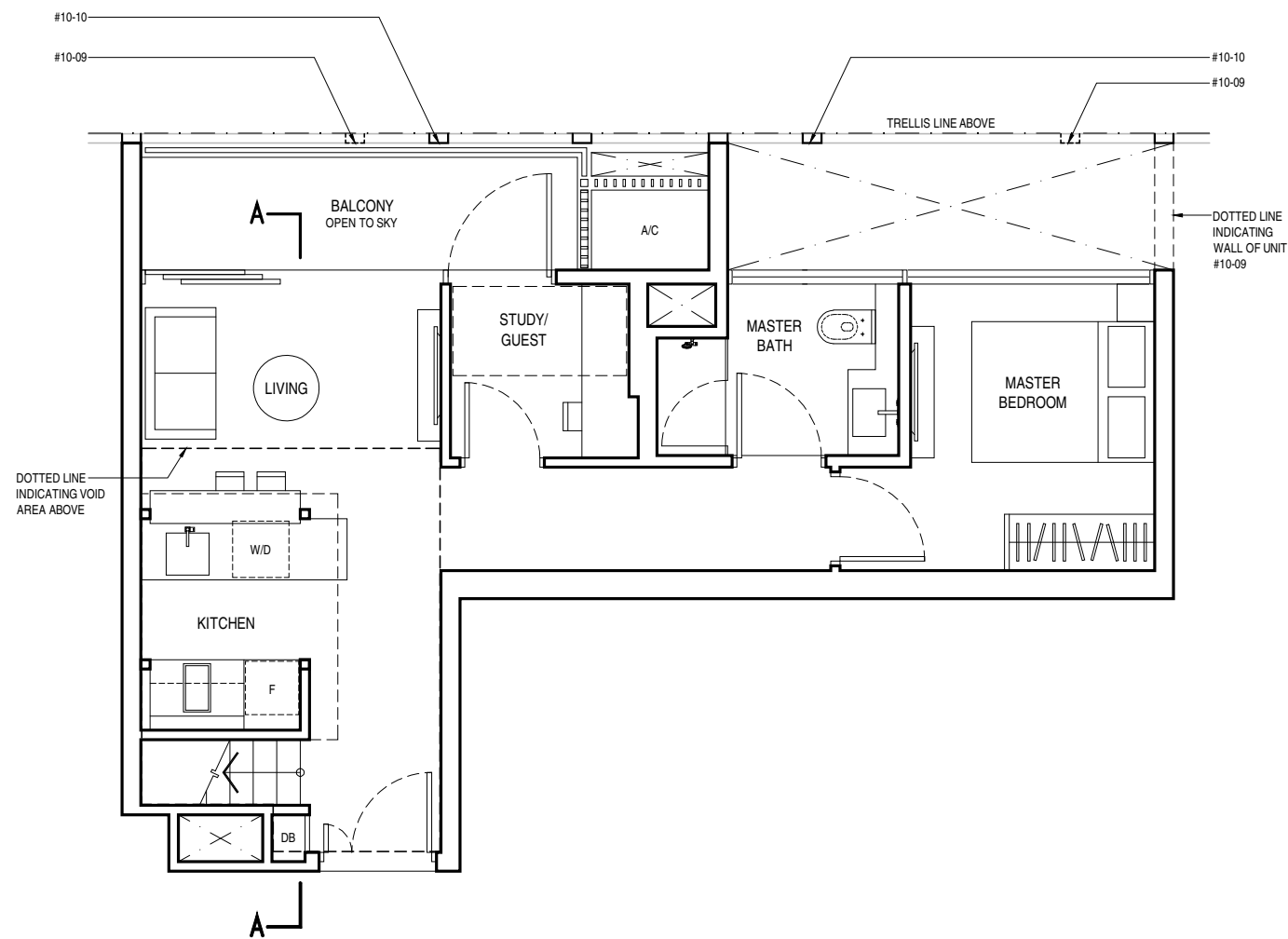
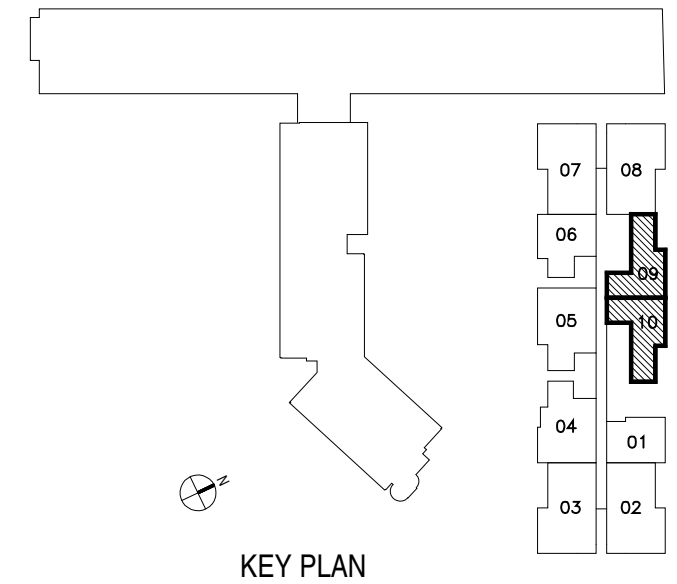
Areas are not finalized and are subject to change  
 Information herein is subject to change without prior notice  
 17 April 2012





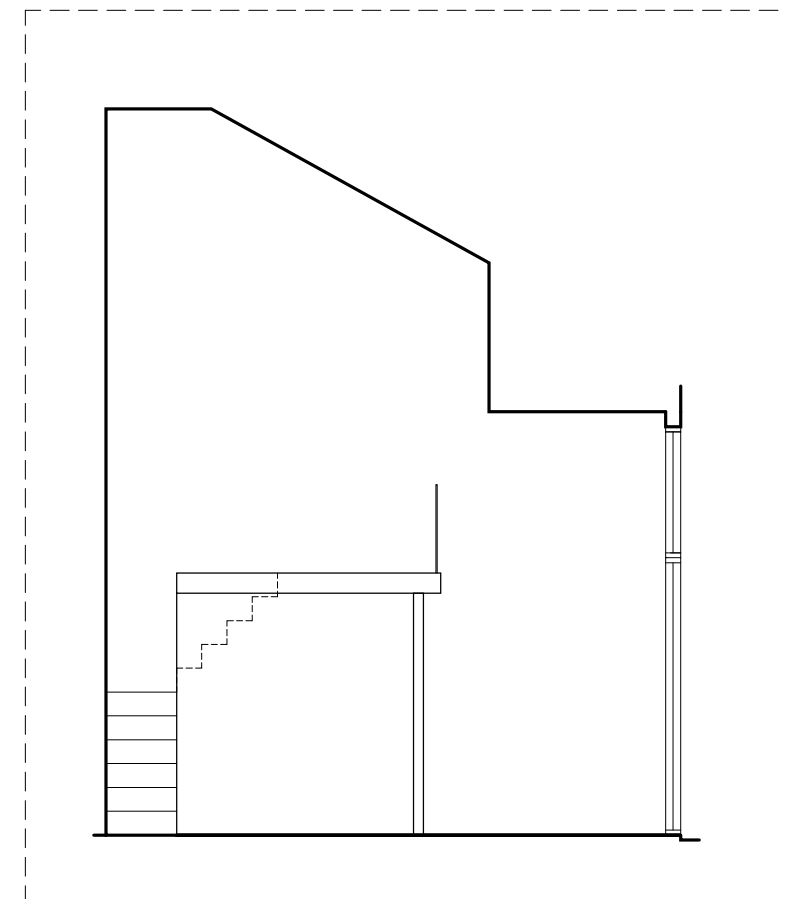
TYPE B2b



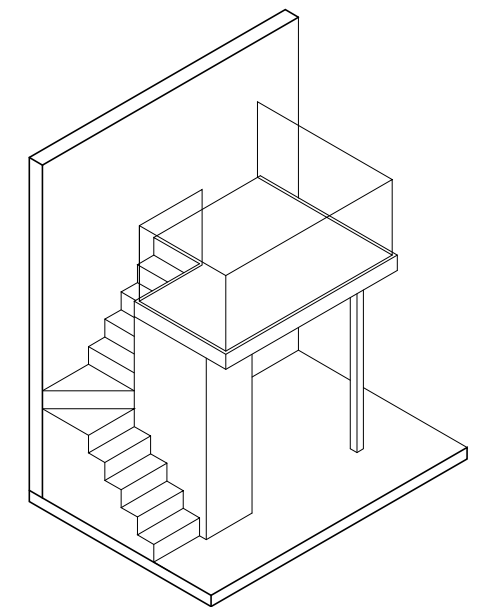


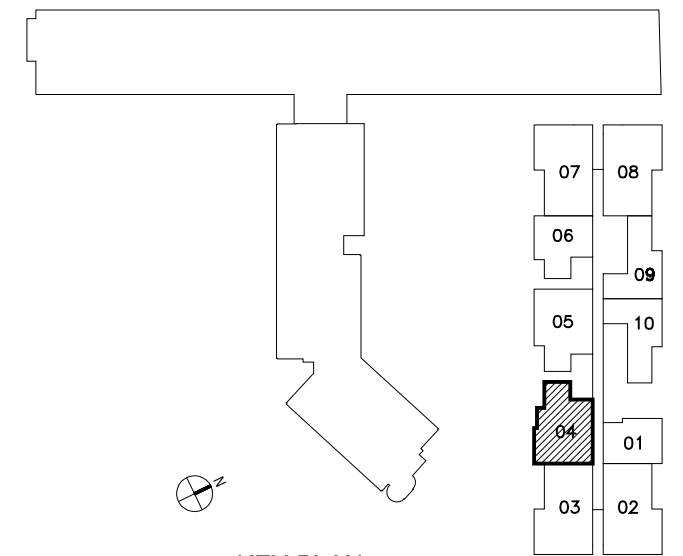
**TYPE B2c**  
**1 BEDROOM + STUDY / GUEST**  
 67 sq.m. / 721 sq.ft. (including void area of 14 sq.m./151 sq.ft. above kitchen)

#10-10 #10-09 (MIRROR)

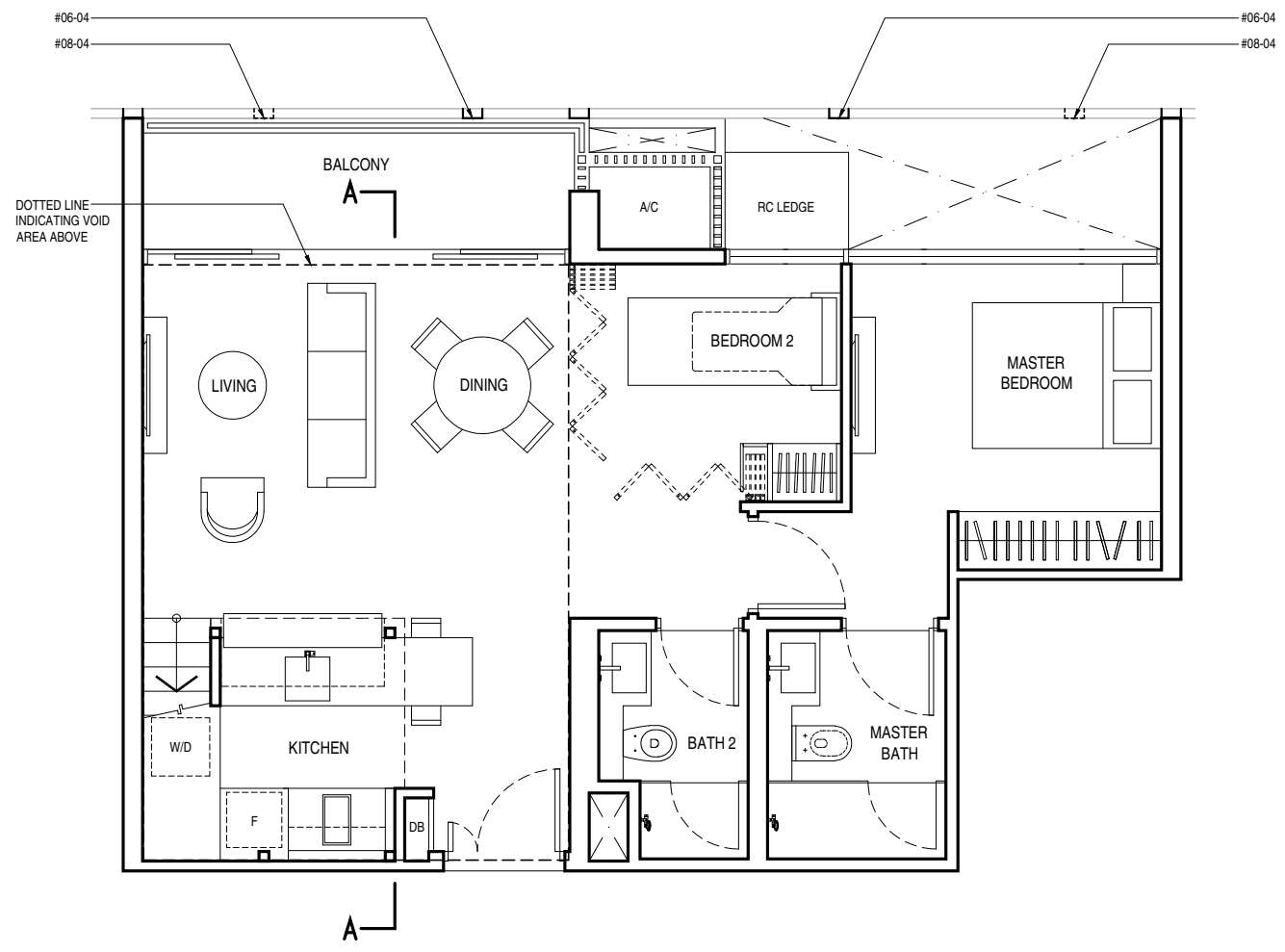


TYPE B2c





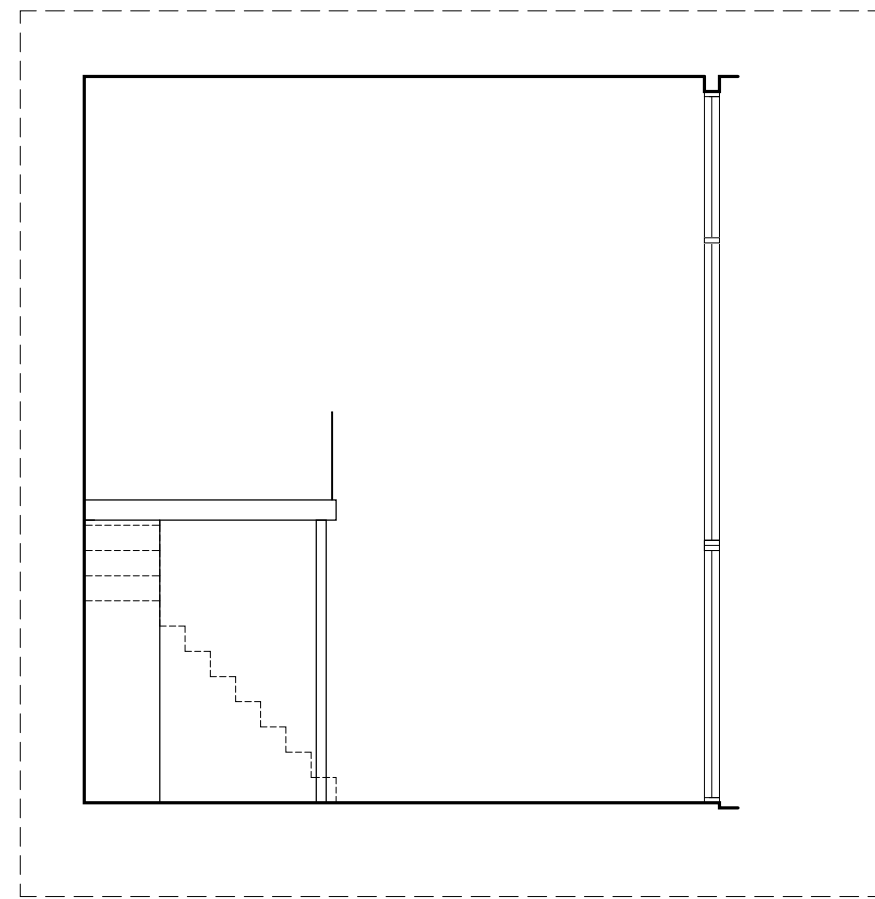
KEY PLAN



**TYPE C1a  
2 BEDROOM**

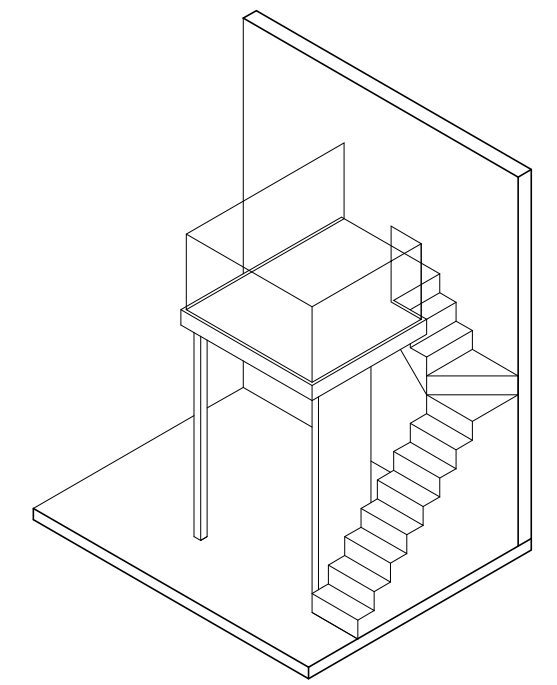
97 sq.m. / 1,044 sq.ft. (including void area of 29 sq.m./312 sq.ft. above living, dining and kitchen)

#06-04  
#08-04



**PART SECTION A-A**  
FLOOR TO FLOOR 7.20 m. ABOVE LIVING/  
DINING AND KITCHEN

TYPE C1a

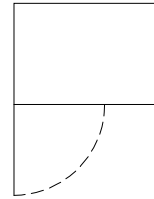


**ISOMETRIC VIEW OF  
FURNITURE DECK**

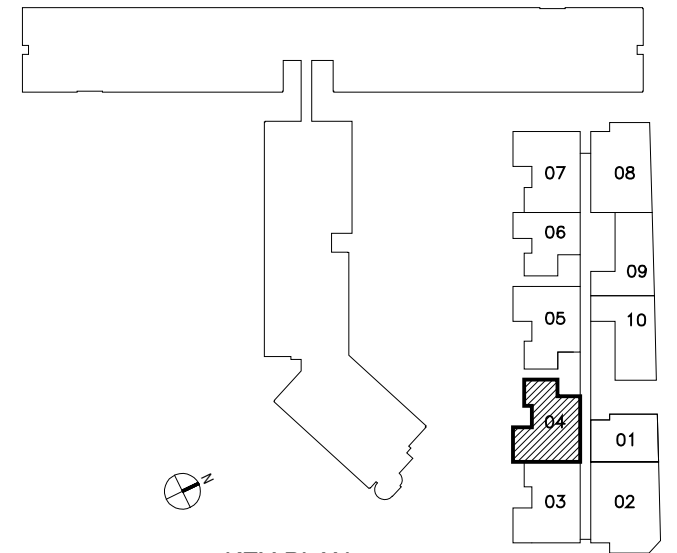
**TYPE C1a (PES)  
2 BEDROOM**

105 sq.m. / 1,130 sq.ft. (including void area of 29 sq.m./312 sq.ft. above living, dining and kitchen)

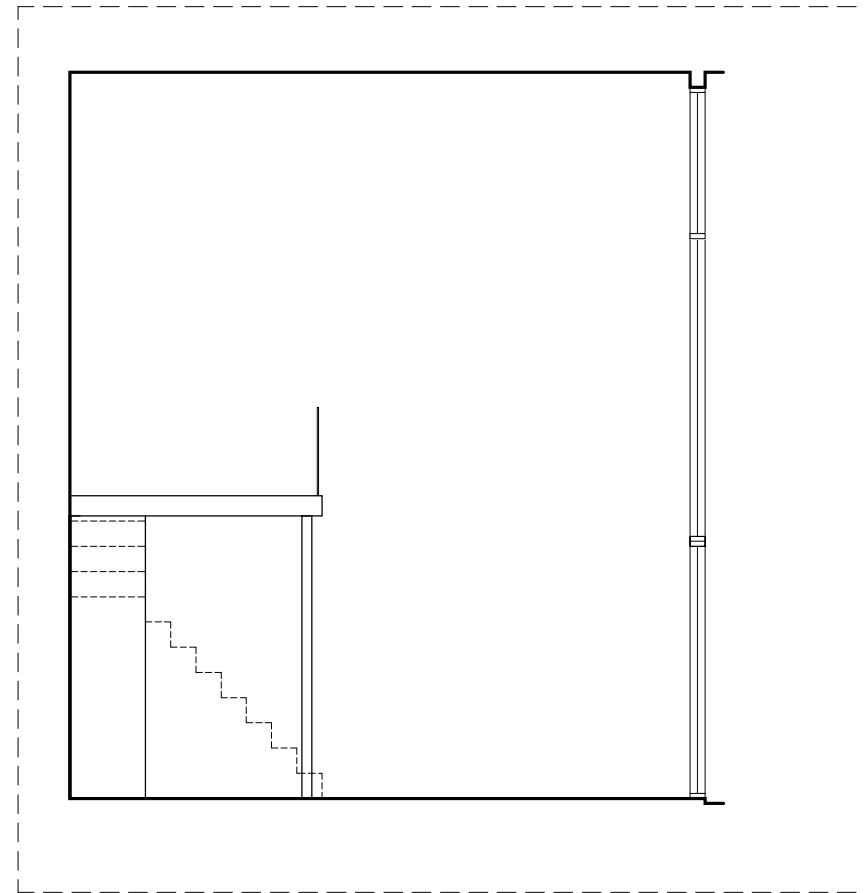
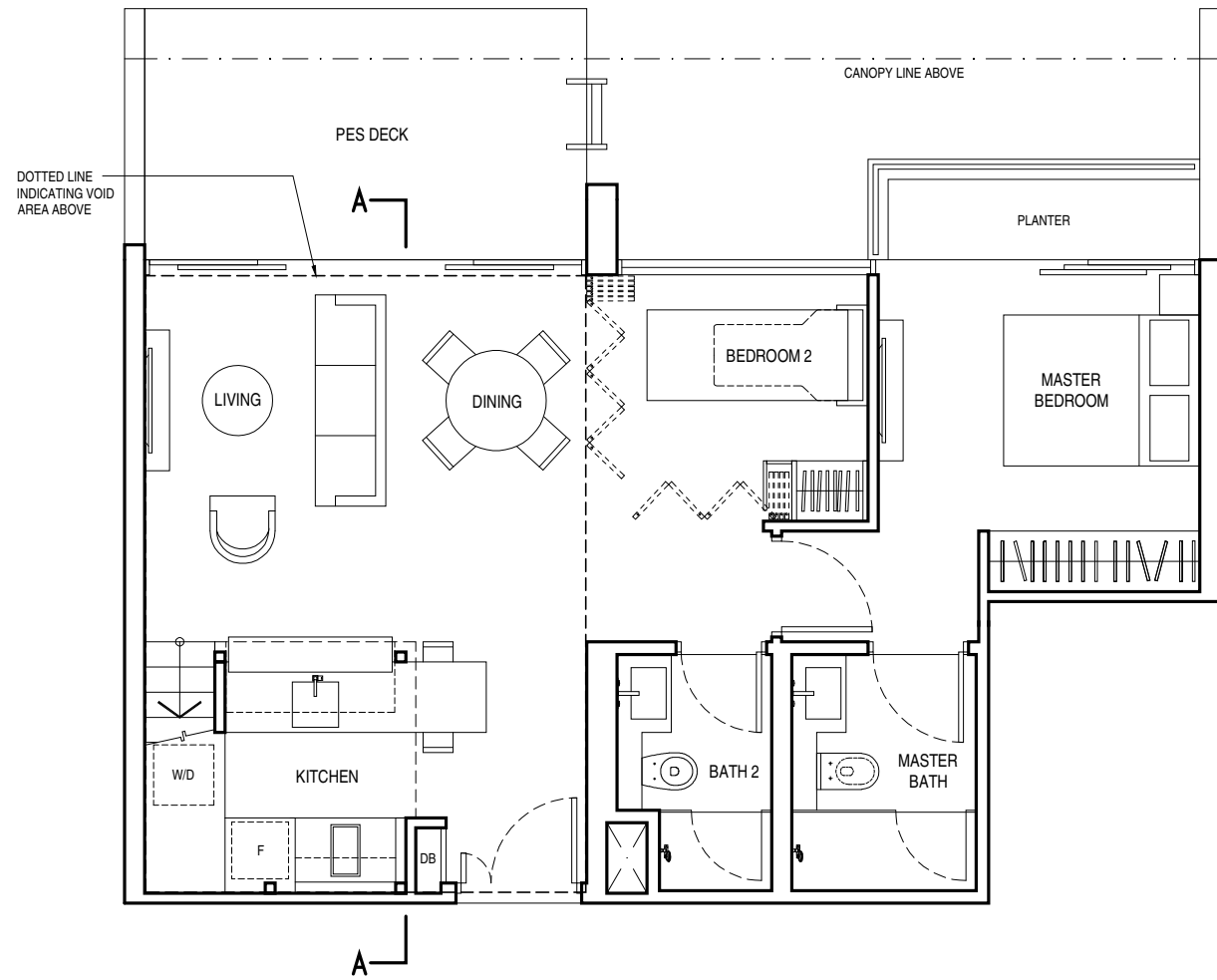
#04-04



unit #04-04: including air-con condensers of 1 sq.m./11 sq.ft. accessory lot located on 3rd floor podium carpark

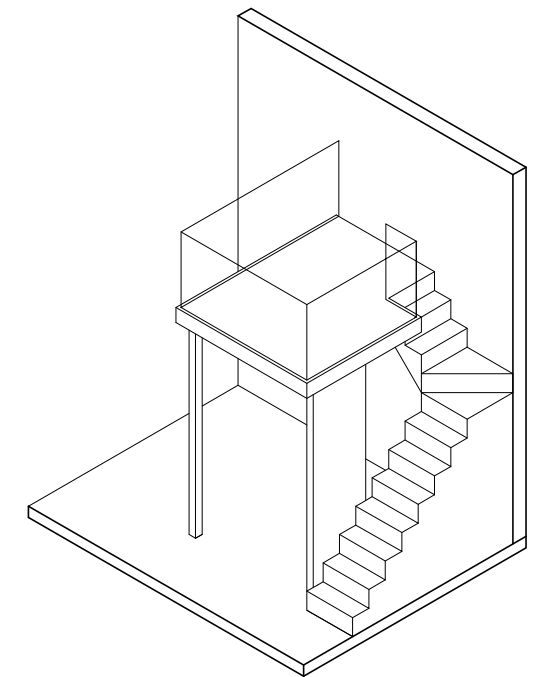


KEY PLAN

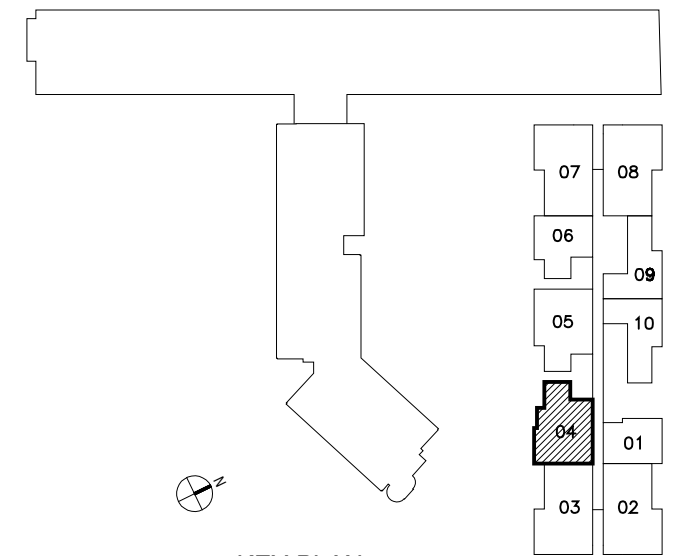


PART SECTION A-A  
FLOOR TO FLOOR 7.20 m. ABOVE LIVING/  
DINING AND KITCHEN

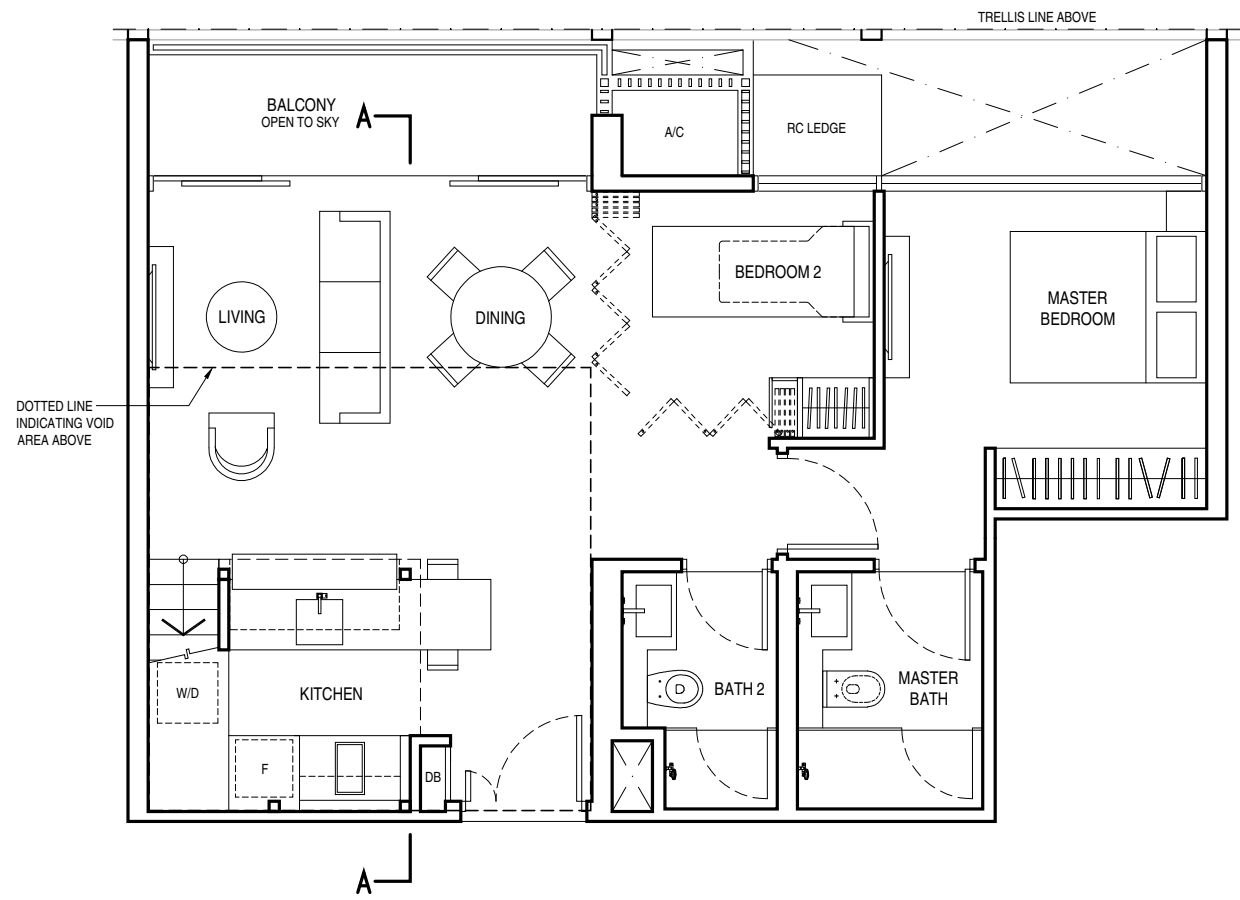
TYPE C1a (PES)



ISOMETRIC VIEW OF  
FURNITURE DECK

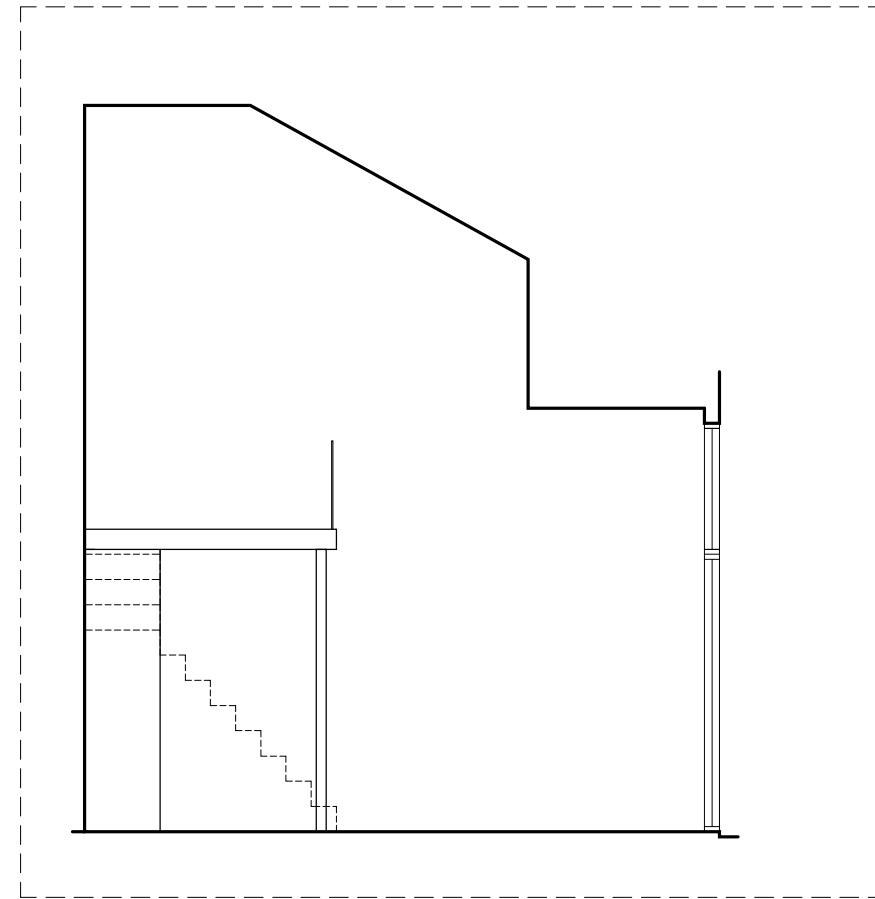


KEY PLAN

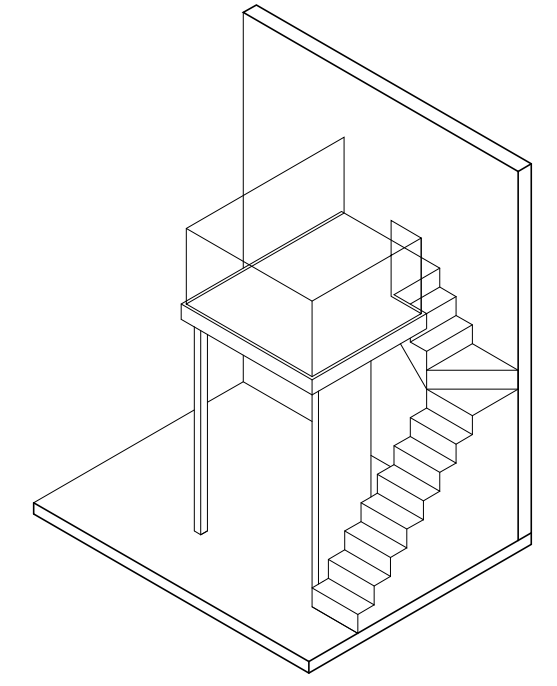


**TYPE C1c  
2 BEDROOM**

89 sq.m. / 958 sq.ft. (including void area of 21 sq.m./226 sq.ft. above living, dining and kitchen)  
#10-04



**PART SECTION A-A**  
FLOOR TO ROOF VARIES FROM 4.20m TO 7.20m  
TYPE C1c

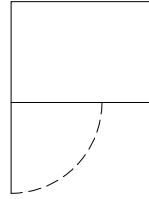


**ISOMETRIC VIEW OF  
FURNITURE DECK**

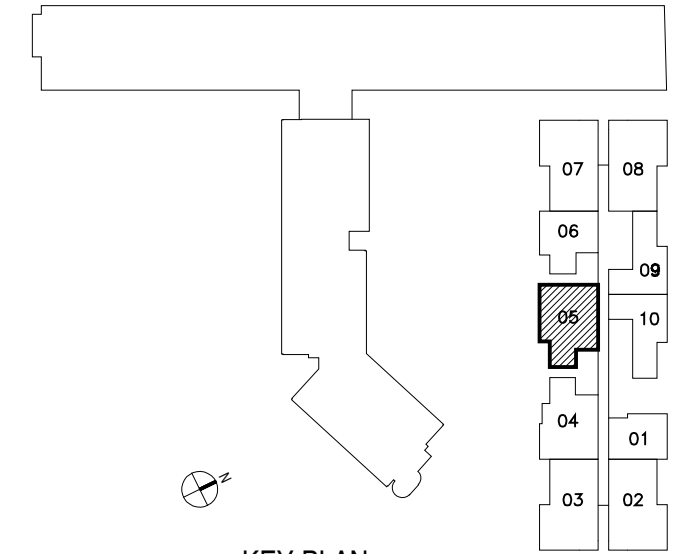
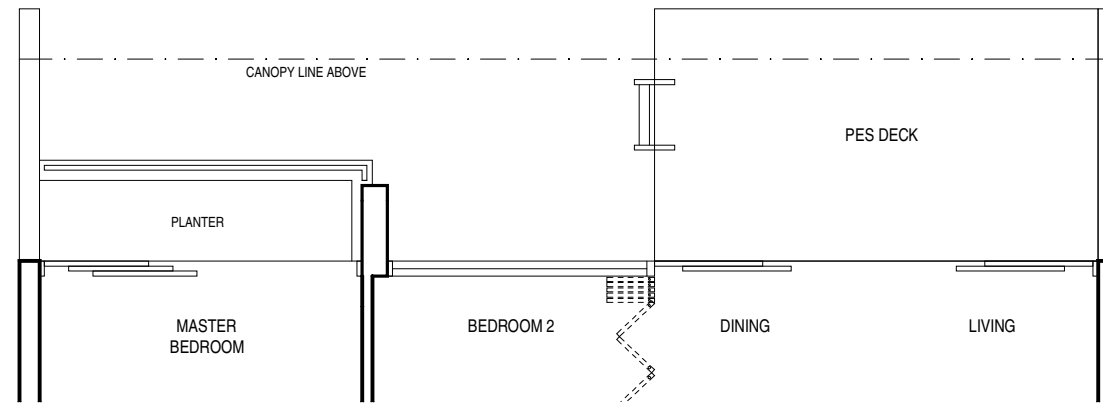
**TYPE C2 (PES)  
2 BEDROOM**

76 sq.m. / 818 sq.ft.

#04-05



unit #04-05: including air-con condensers of 1 sq.m./ 11 sq.ft. accessory lot located on 3rd floor podium carpark

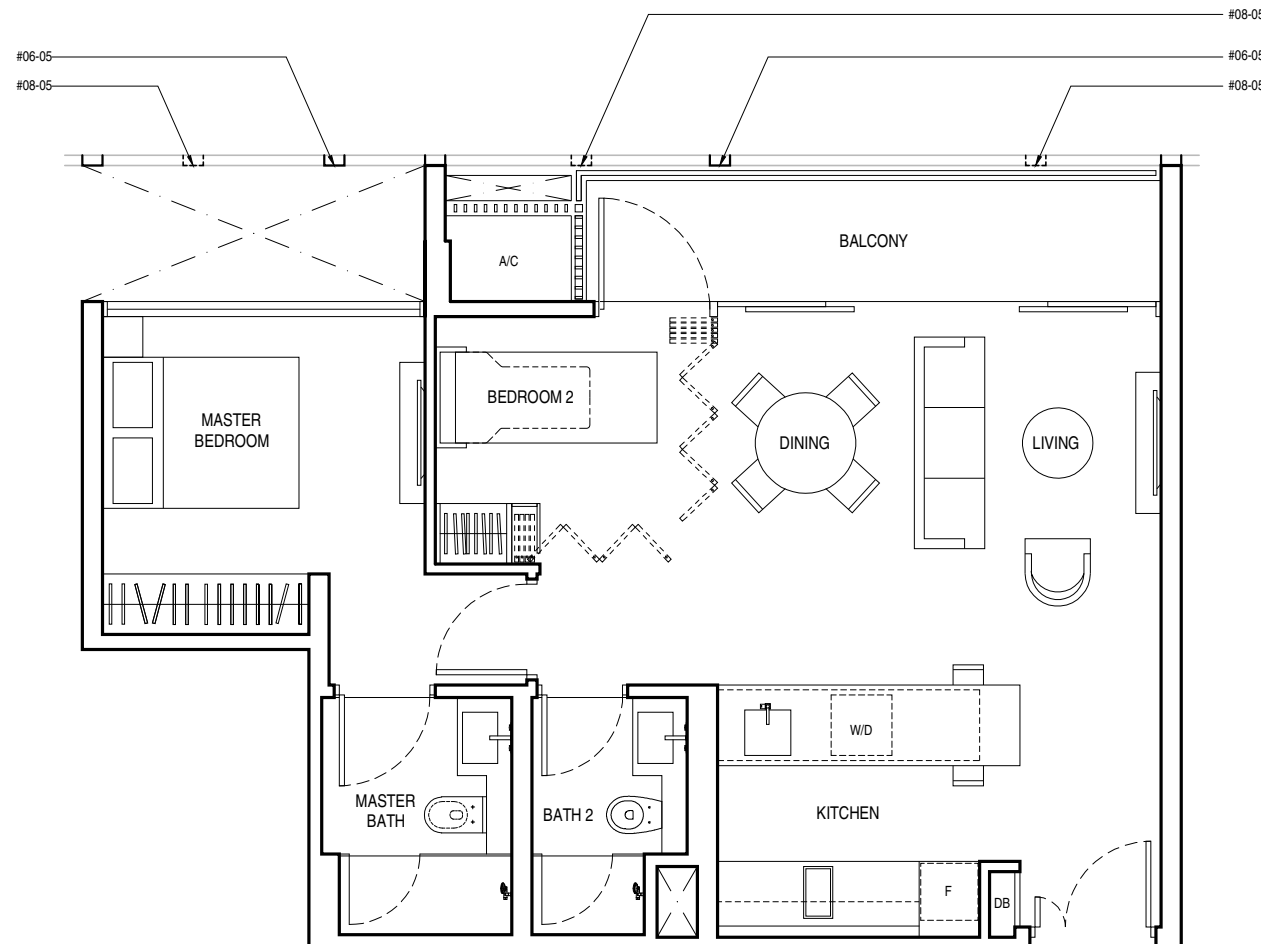


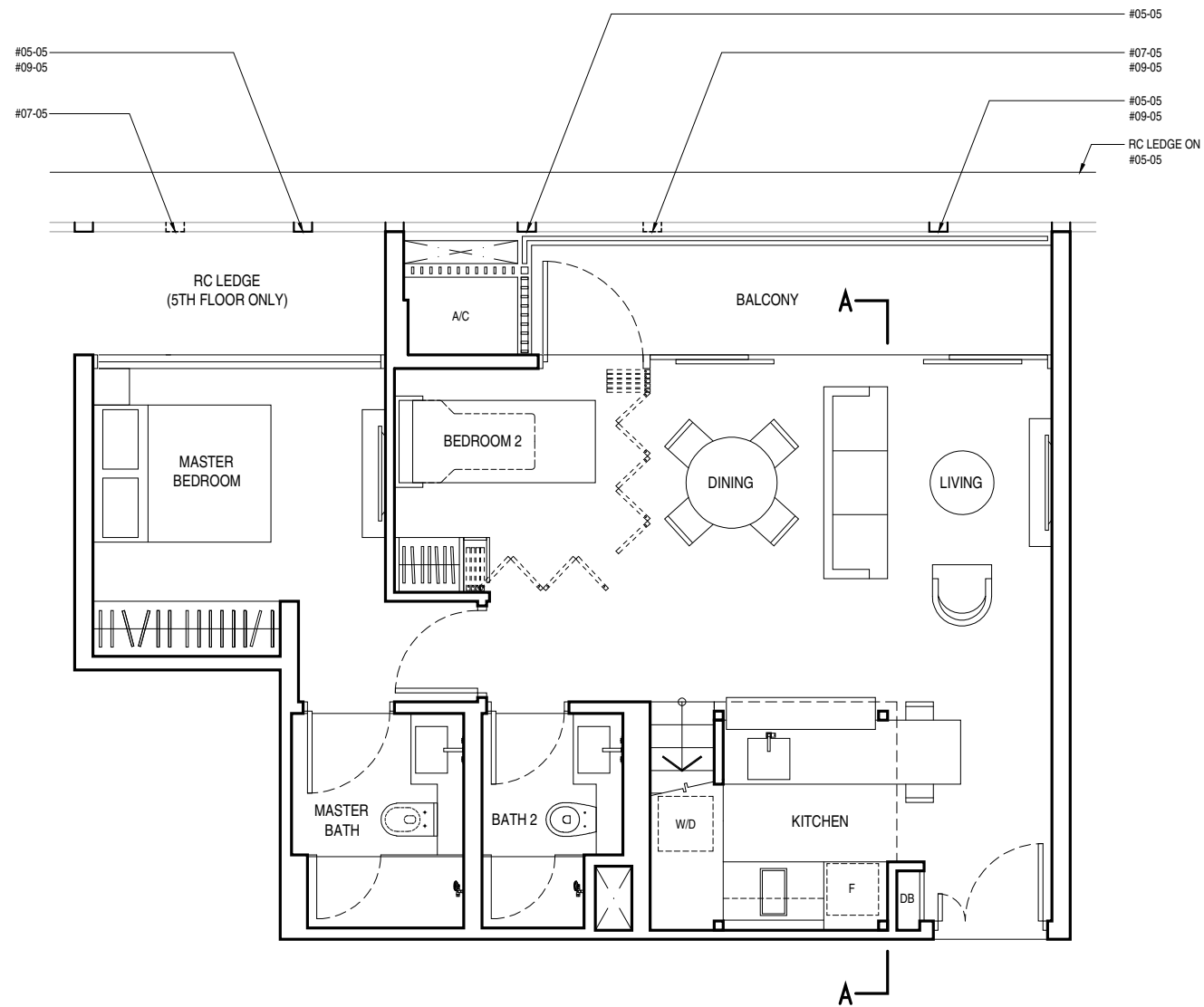
KEY PLAN

**TYPE C2  
2 BEDROOM**

70 sq.m. / 753 sq.ft.

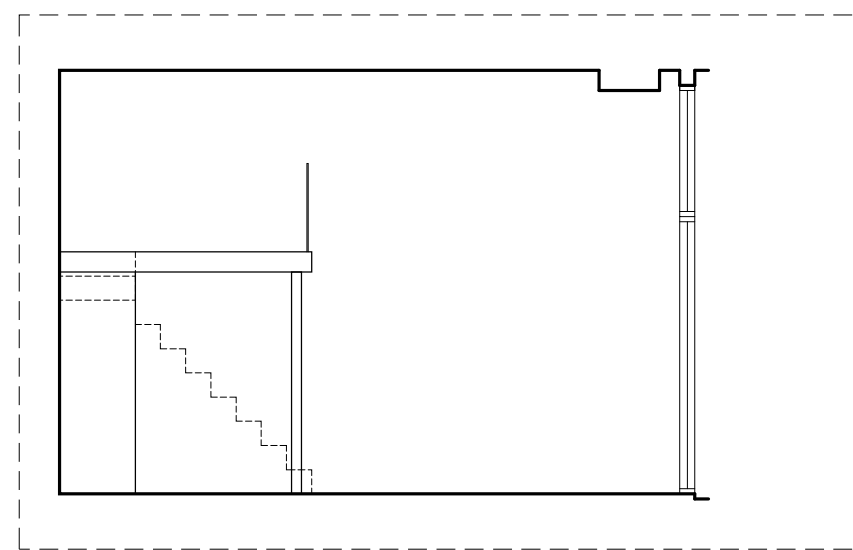
#06-05  
#08-05





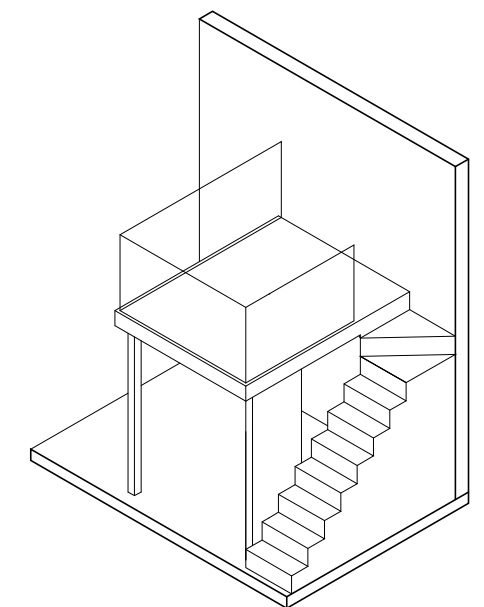
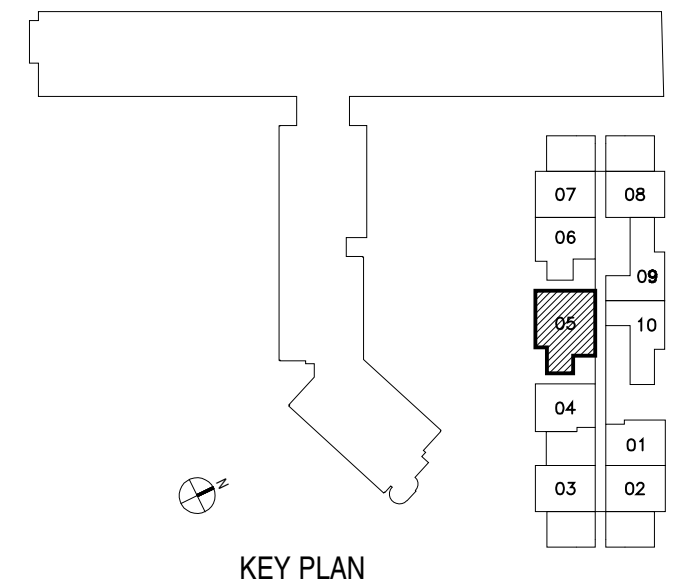
**TYPE C2b**  
**2 BEDROOM**  
70 sq.m. / 753 sq.ft.

#05-05  
#07-05  
#09-05

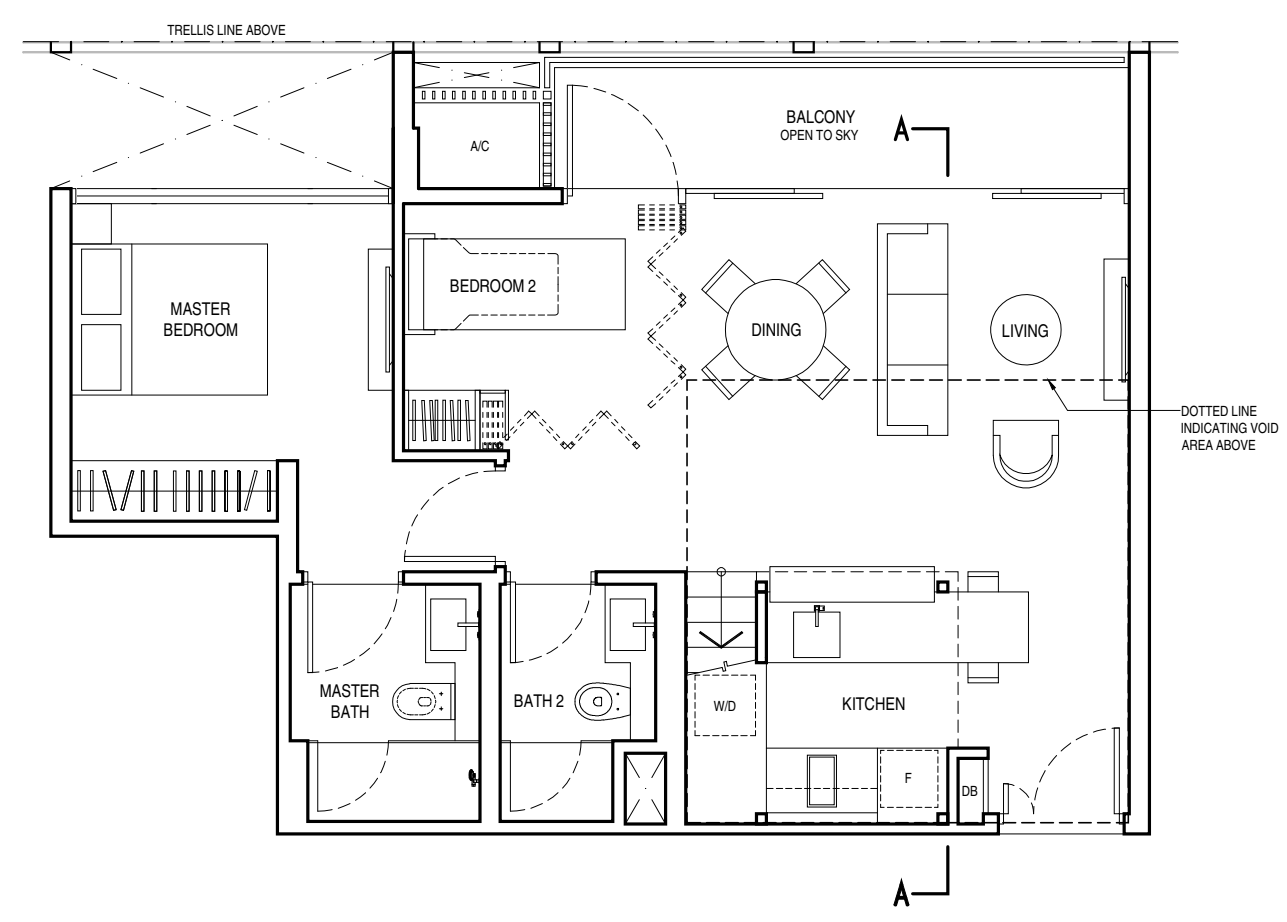
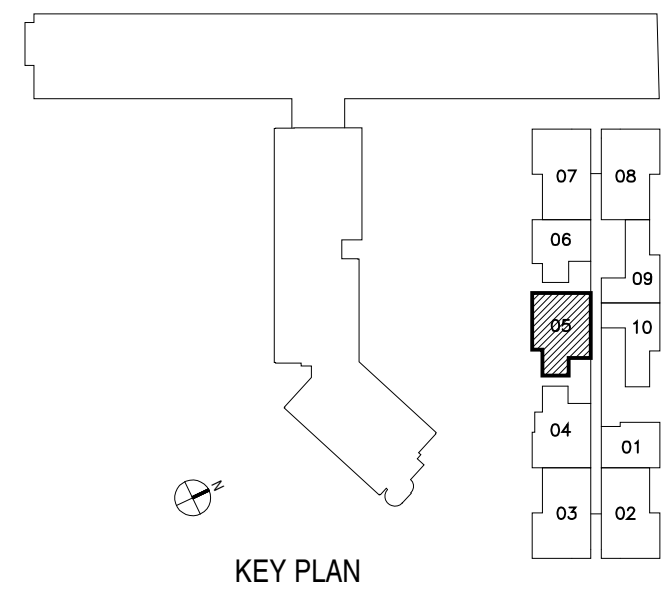


**PART SECTION A-A**  
FLOOR TO FLOOR 4.20m

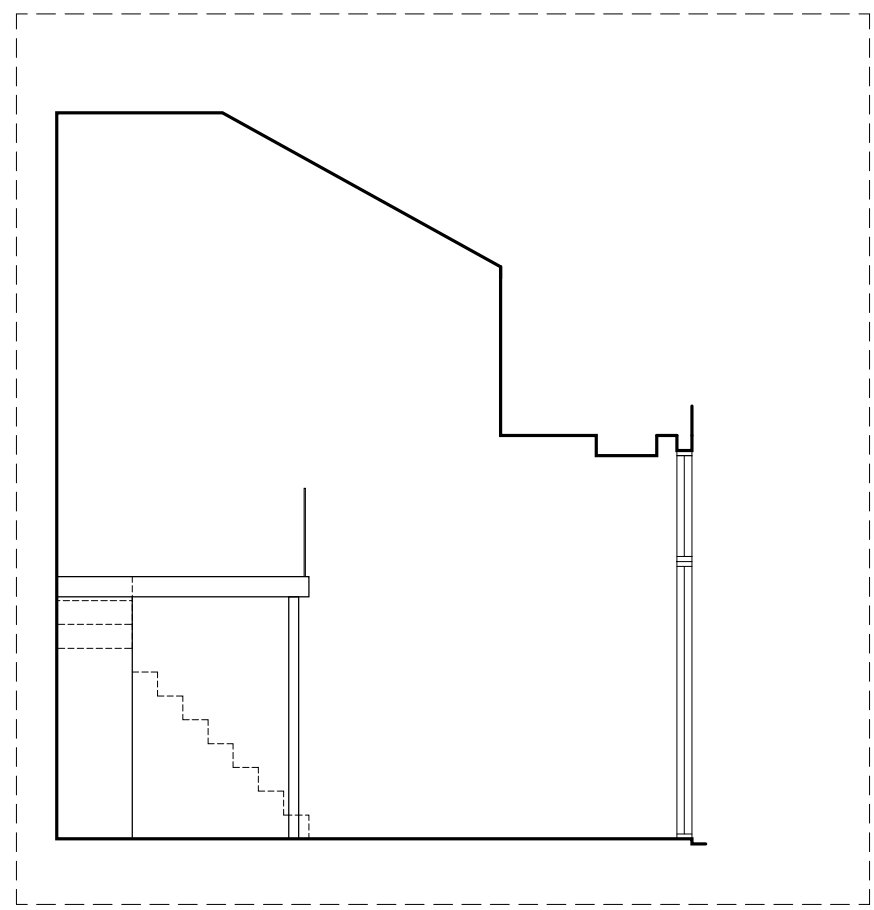
TYPE C2b



**ISOMETRIC VIEW OF FURNITURE DECK**

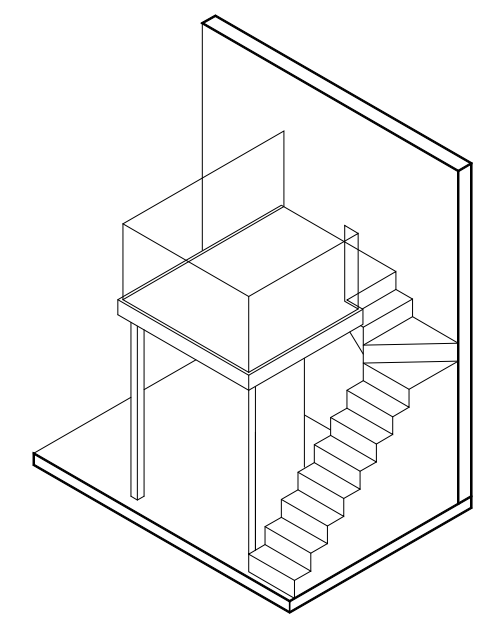


**TYPE C2c  
1 BEDROOM**  
91 sq.m. / 980 sq.ft. (including void area of 21 sq.m./226 sq.ft. above living, dining and kitchen)  
#10-05



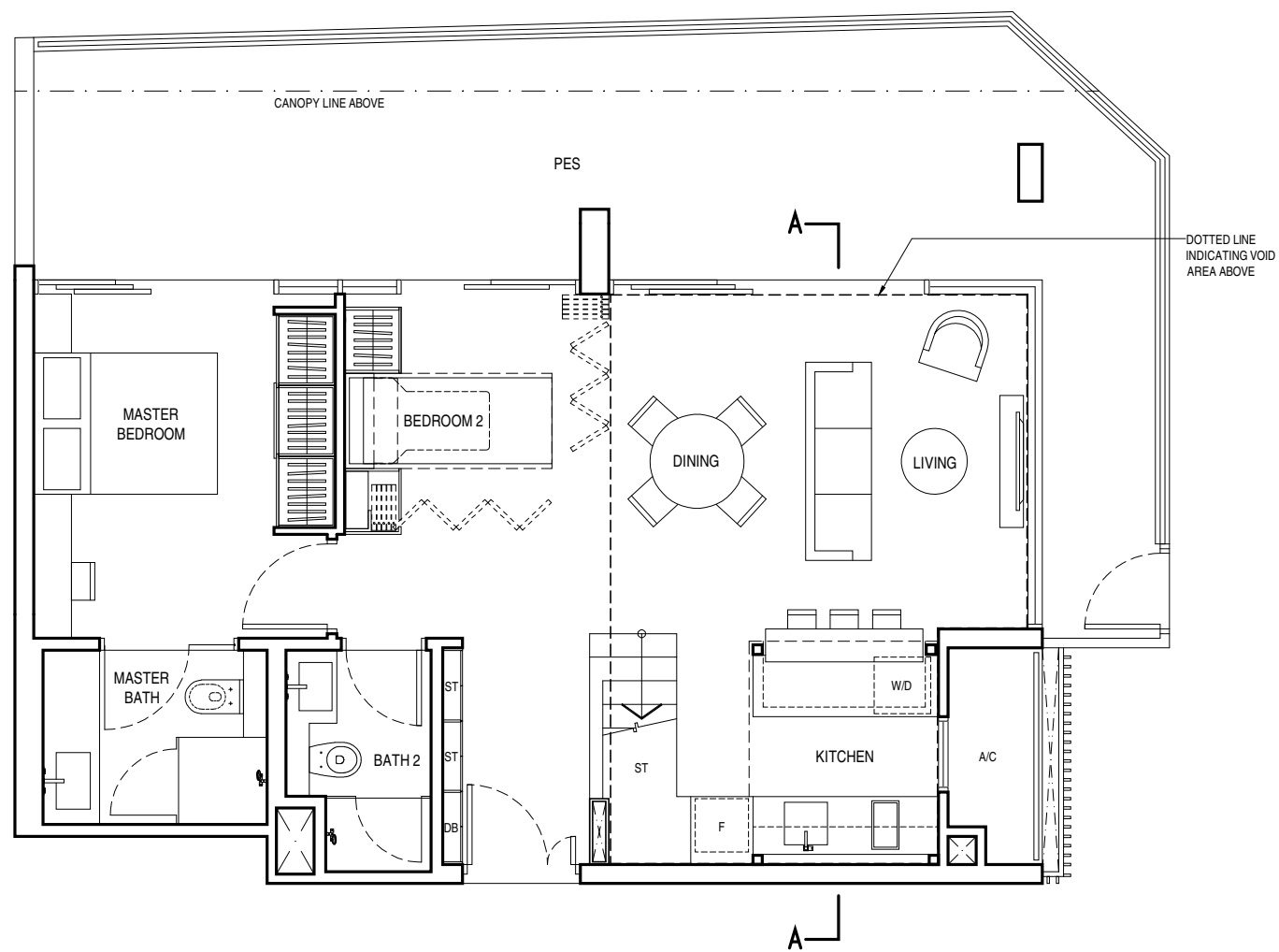
**PART SECTION A-A**  
FLOOR TO ROOF VARIES FROM 4.20m TO 7.20m

TYPE C2c



**ISOMETRIC VIEW OF  
FURNITURE DECK**

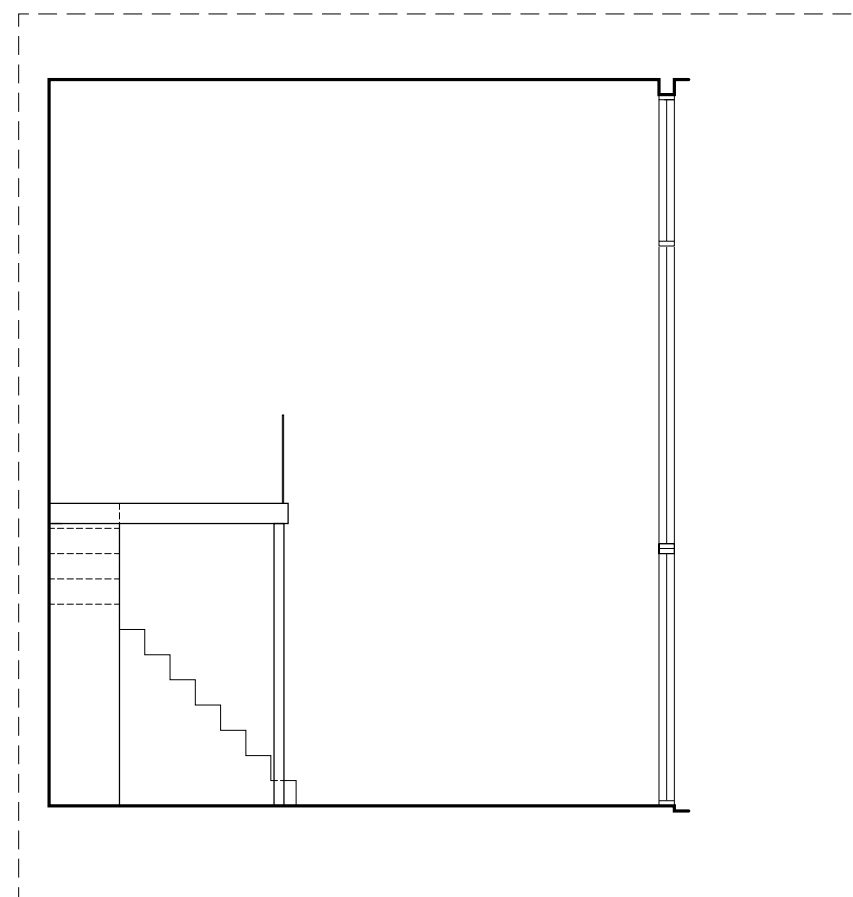




**TYPE C3a1 (PES)  
2 BEDROOM**

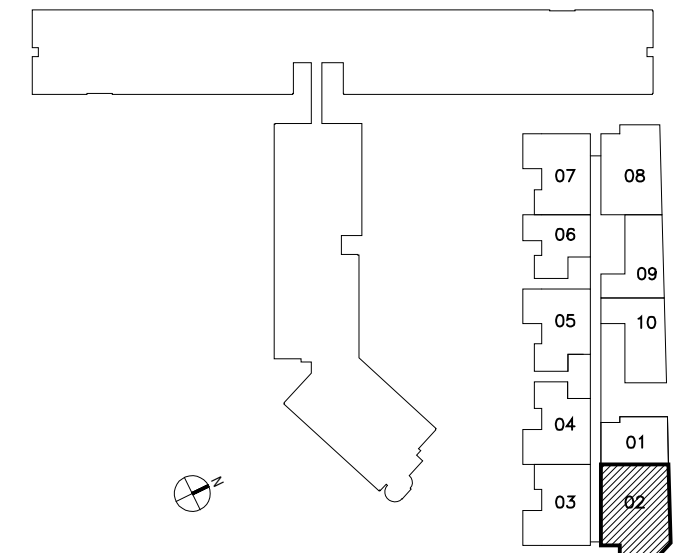
128 sq.m. / 1,378 sq.ft. (including void area of 26 sq.m./280 sq.ft. above living, dining and kitchen)

#04-02

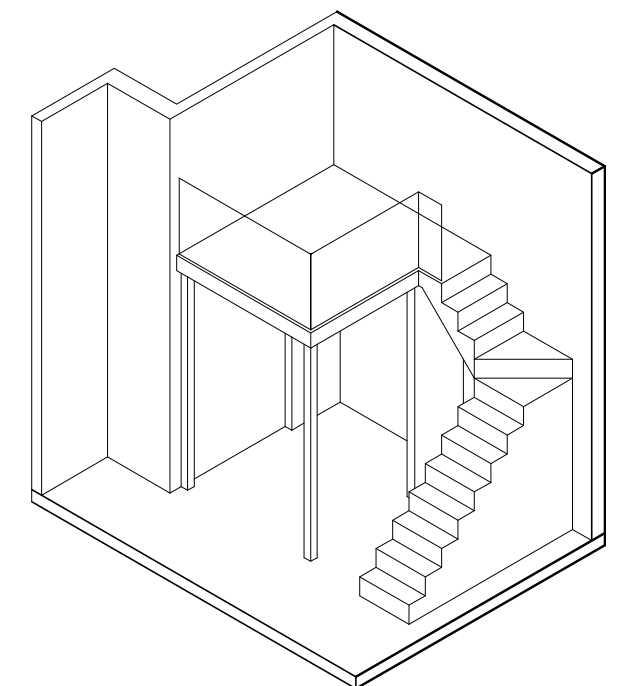


**PART SECTION A-A**  
FLOOR TO FLOOR 7.20 m. ABOVE LIVING/  
DINING AND KITCHEN

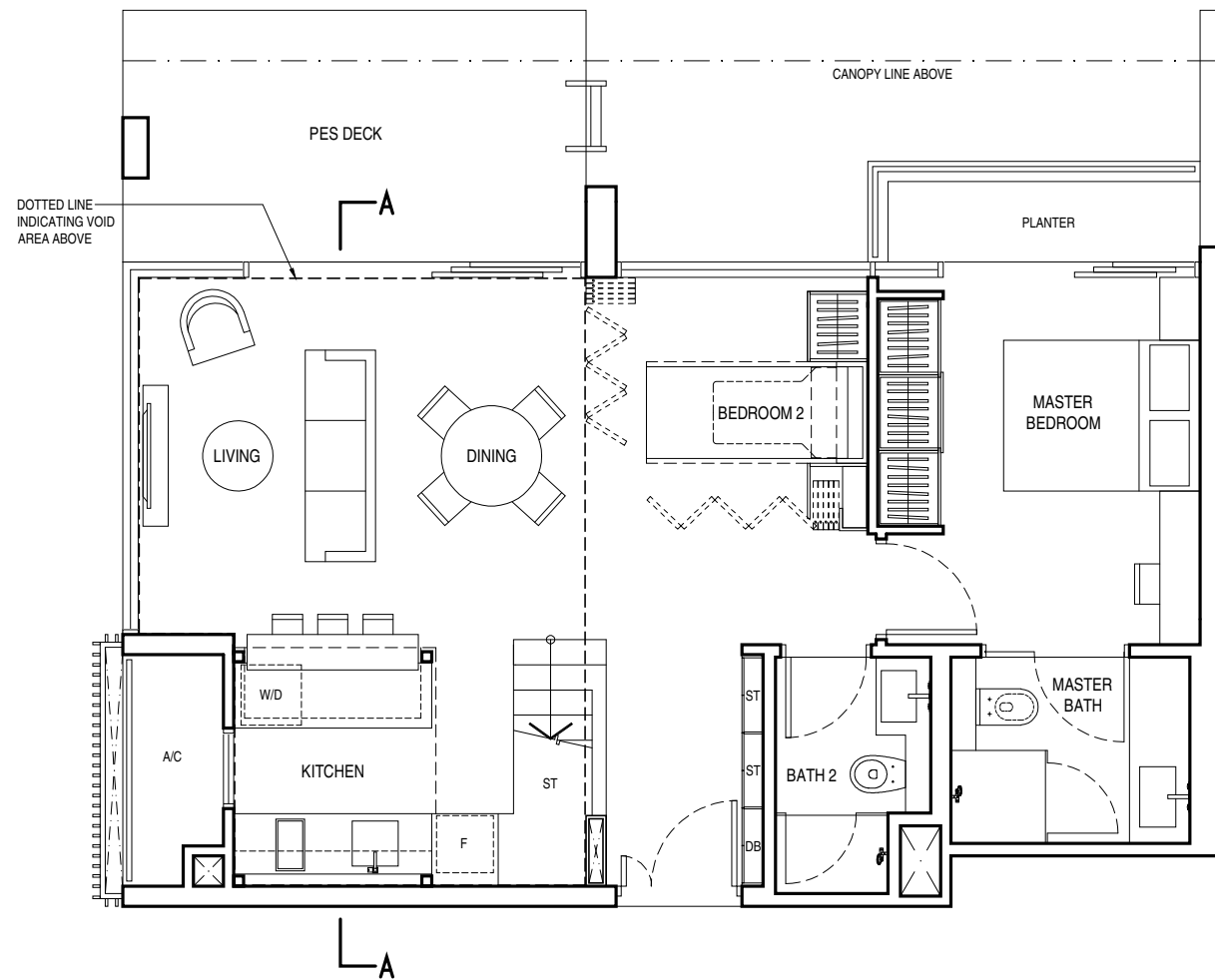
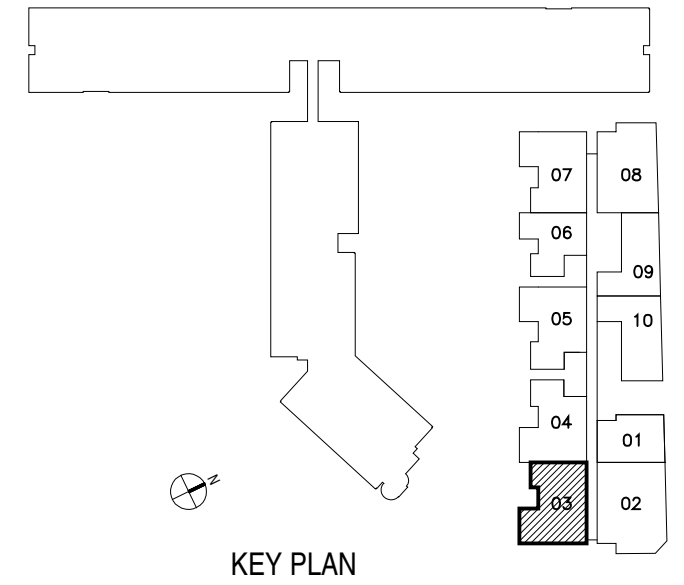
TYPE C3a1(PES)



**KEY PLAN**



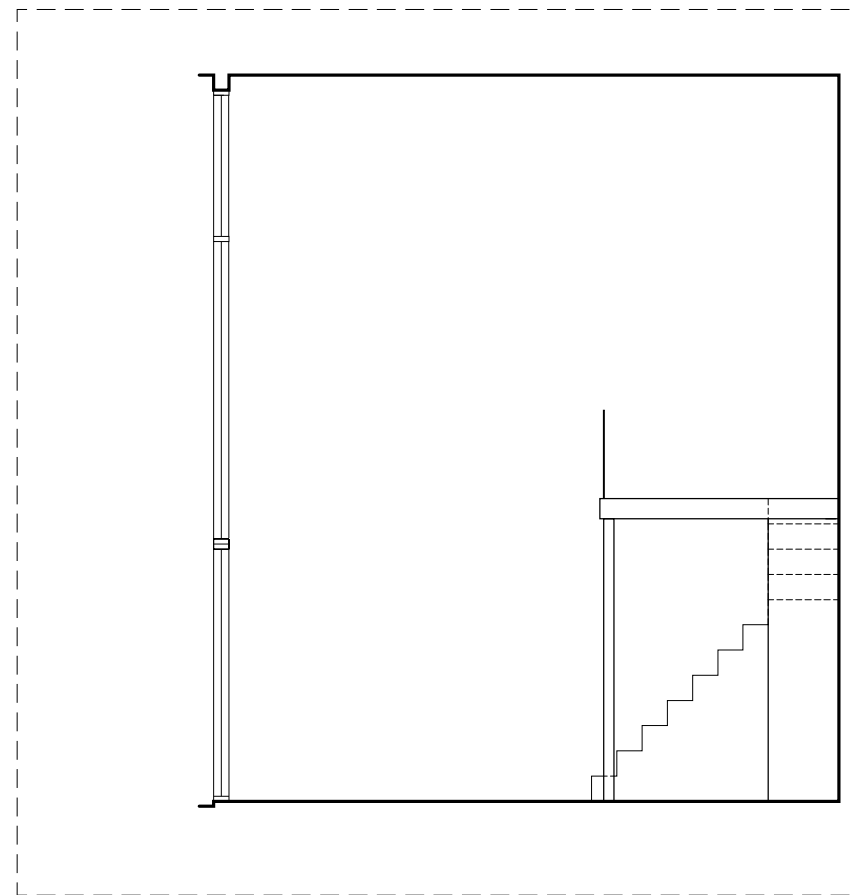
**ISOMETRIC VIEW OF  
FURNITURE DECK**



**TYPE C3a2 (PES)  
2 BEDROOM**

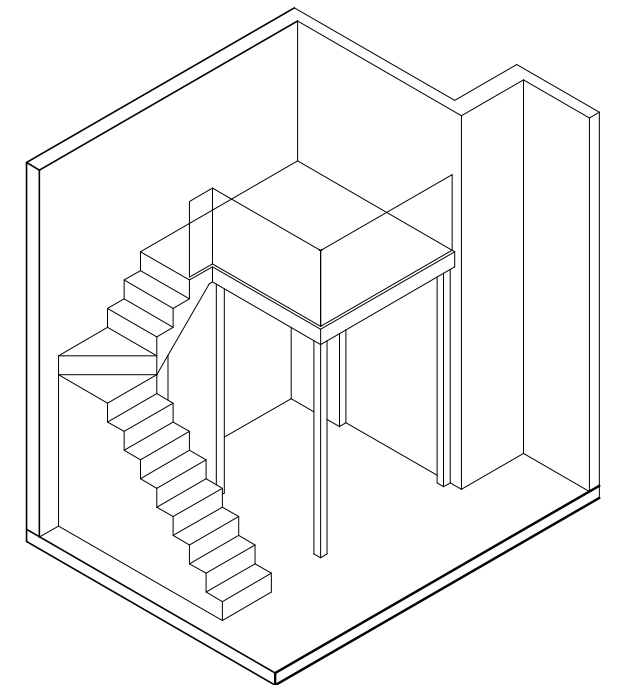
107 sq.m. / 1,152 sq.ft. (including void area of 26 sq.m./280 sq.ft. above living, dining and kitchen)

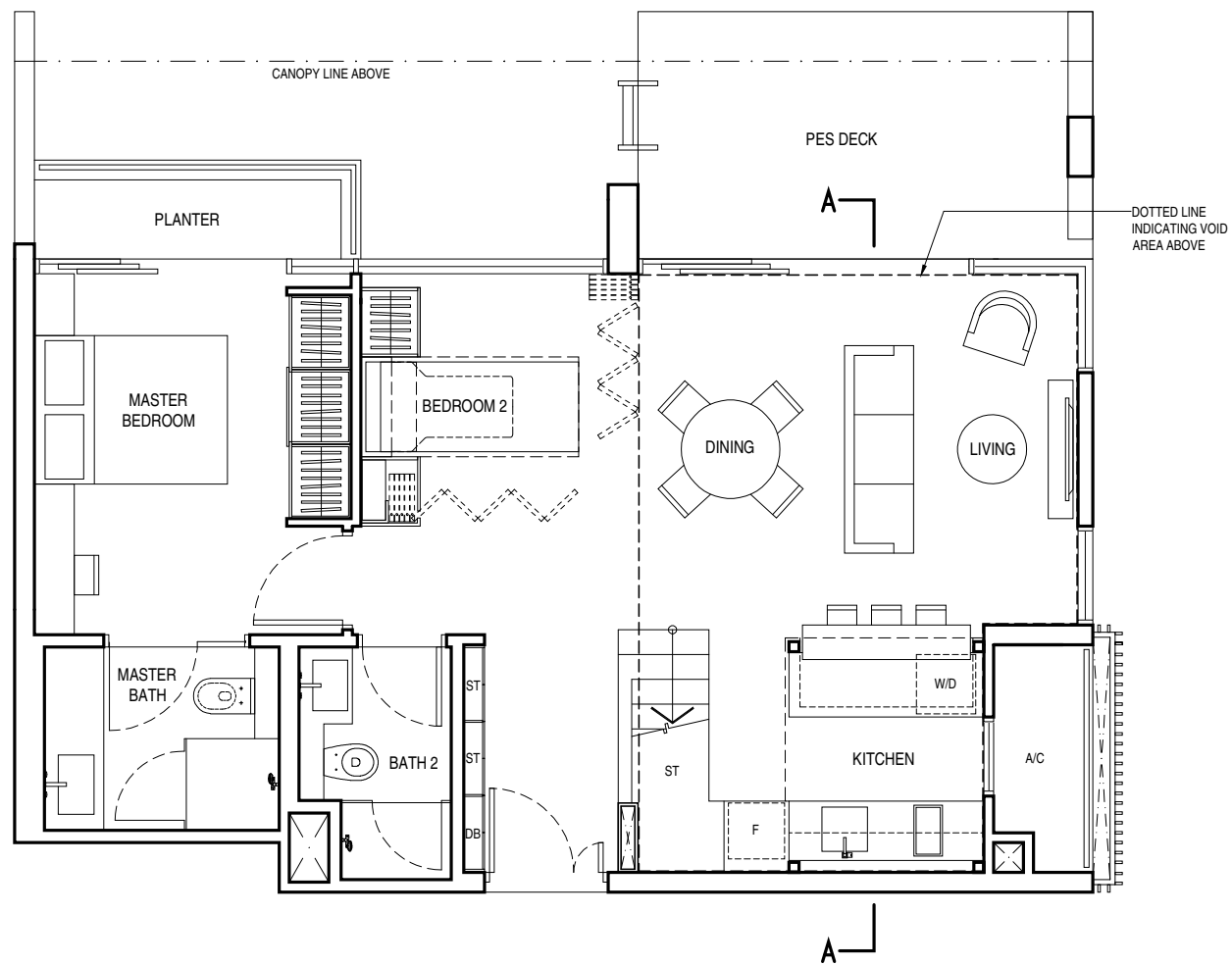
#04-03



**PART SECTION A-A**  
FLOOR TO FLOOR 7.20 m. ABOVE LIVING/  
DINING AND KITCHEN

TYPE C3a2(PES)

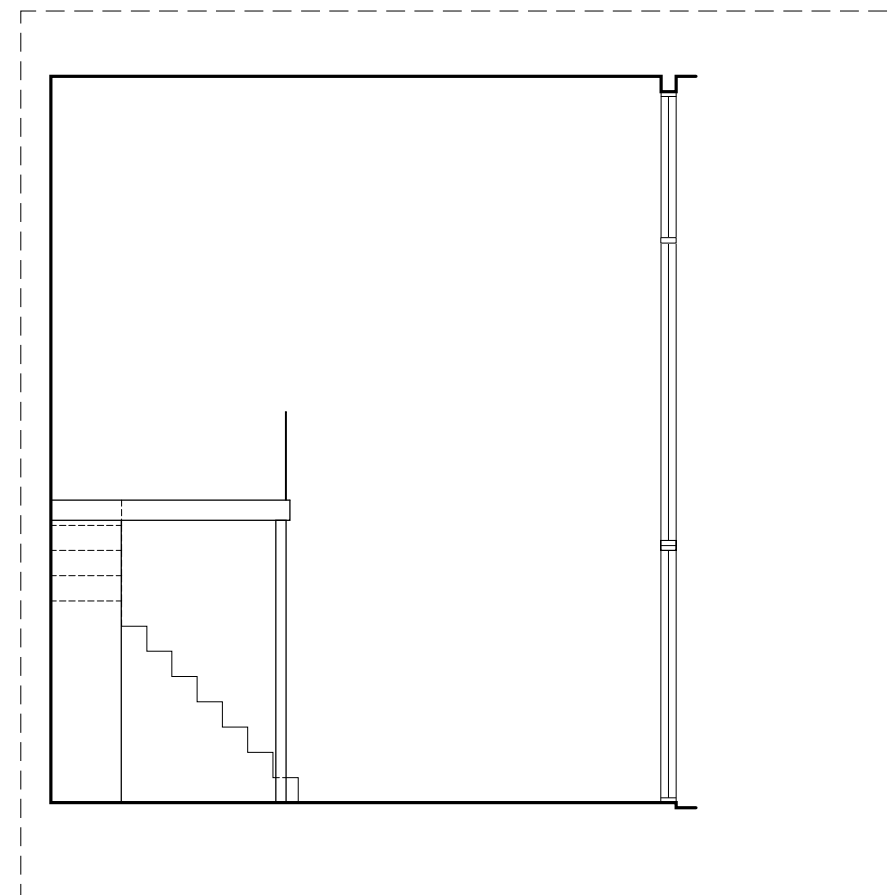




**TYPE C3a3 (PES)  
2 BEDROOM**

107 sq.m. / 1,152 sq.ft. (including void area of 26 sq.m./280 sq.ft. above living, dining and kitchen)

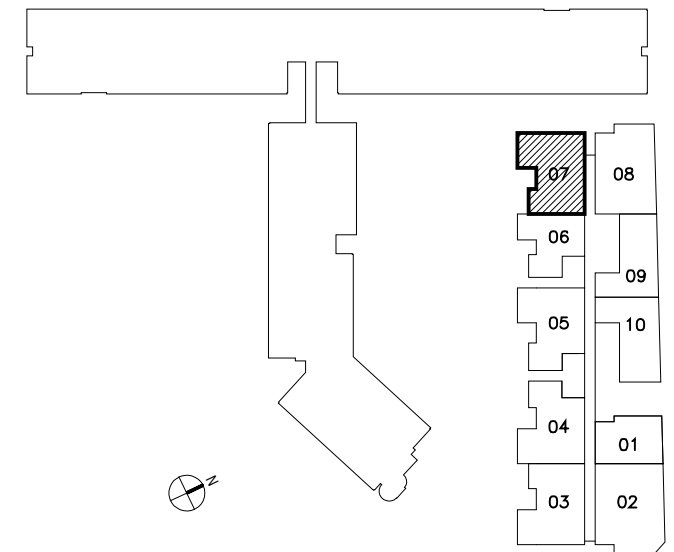
#04-07



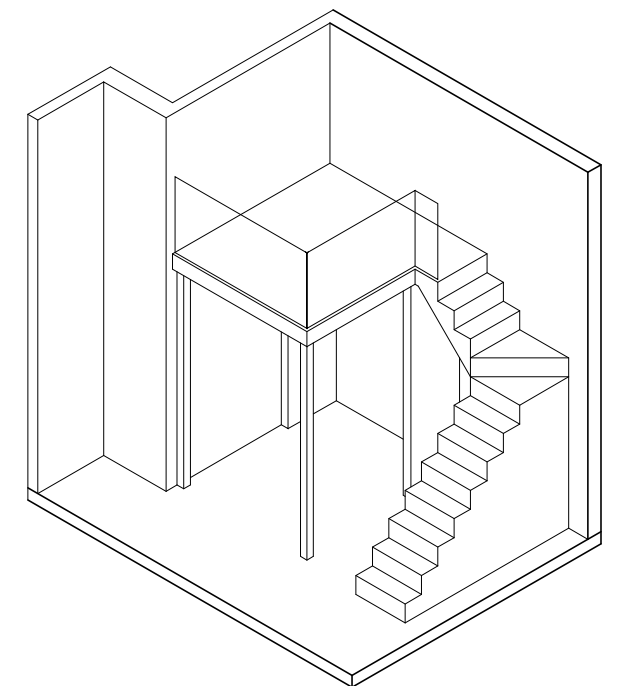
**PART SECTION A-A**

FLOOR TO FLOOR 7.20 m. ABOVE LIVING/  
DINING AND KITCHEN

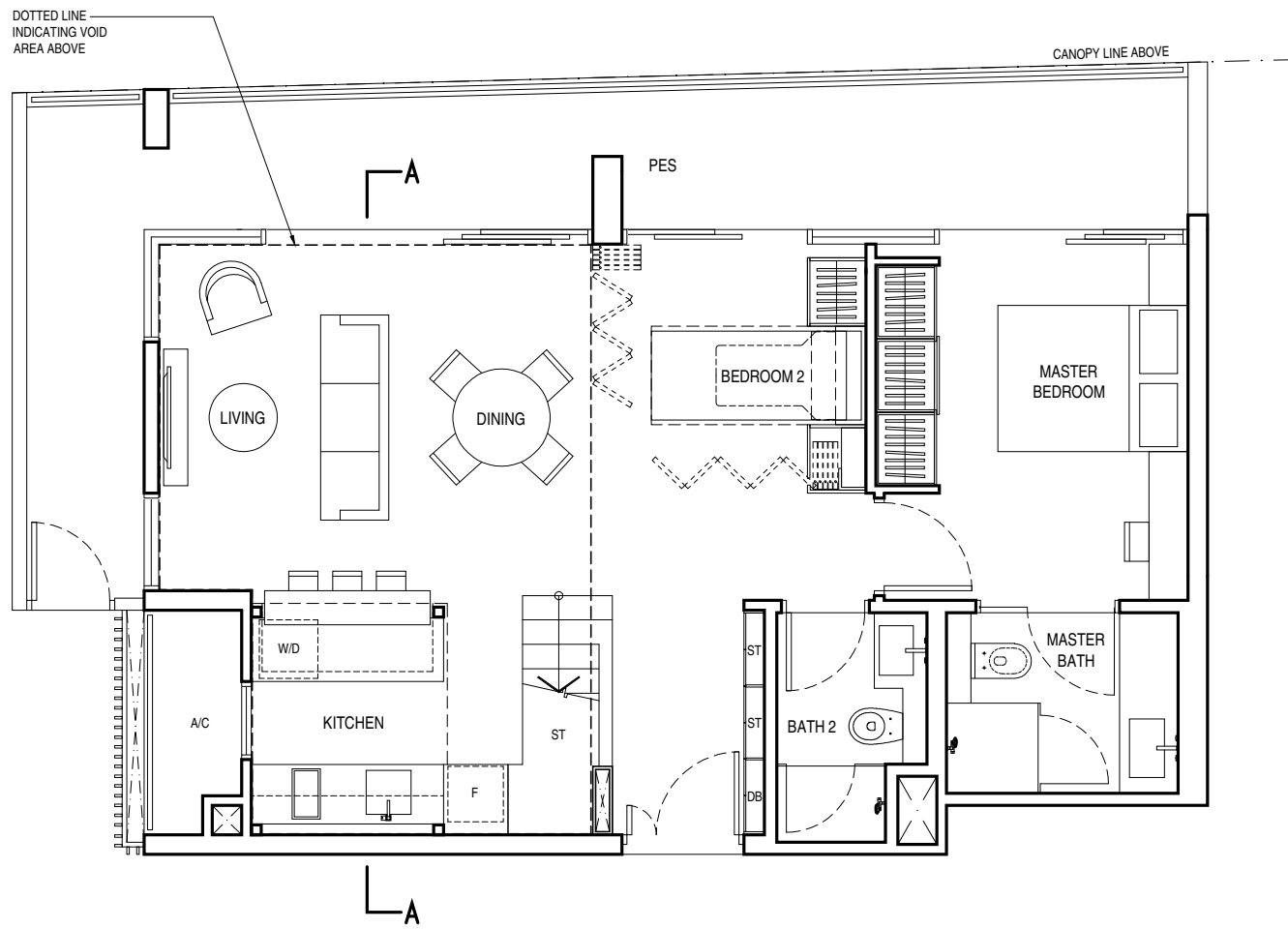
TYPE C3a3(PES)



**KEY PLAN**



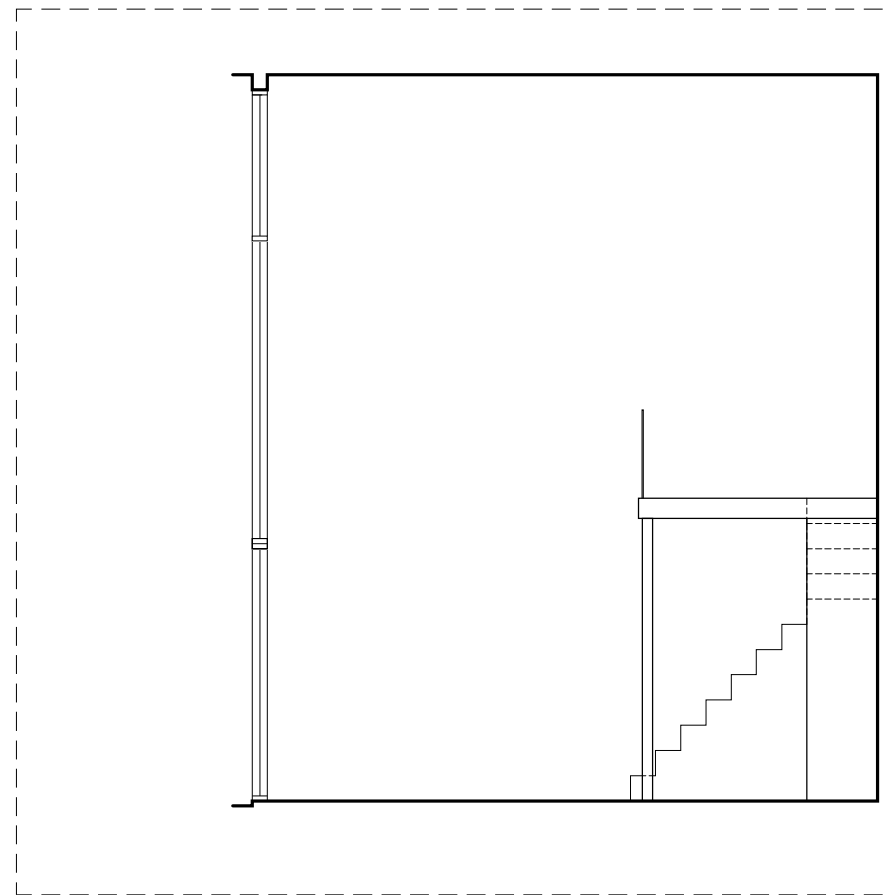
**ISOMETRIC VIEW OF  
FURNITURE DECK**



**TYPE C3a4 (PES)  
2 BEDROOM**

115 sq.m. / 1,238 sq.ft. (including void area of 26 sq.m./280 sq.ft. above living, dining and kitchen)

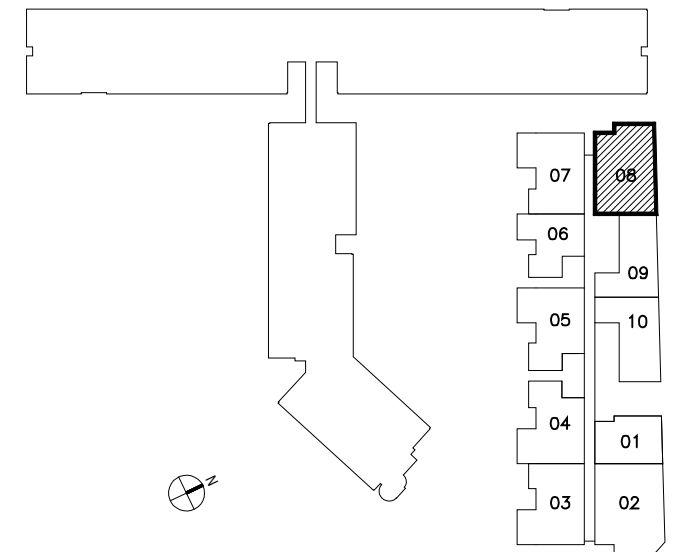
#04-08



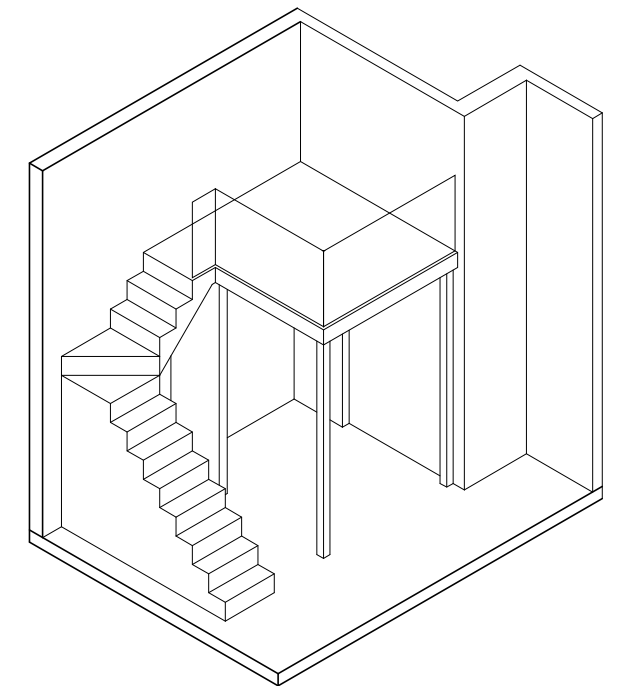
**PART SECTION A-A**

FLOOR TO FLOOR 7.20 m. ABOVE LIVING/  
DINING AND KITCHEN

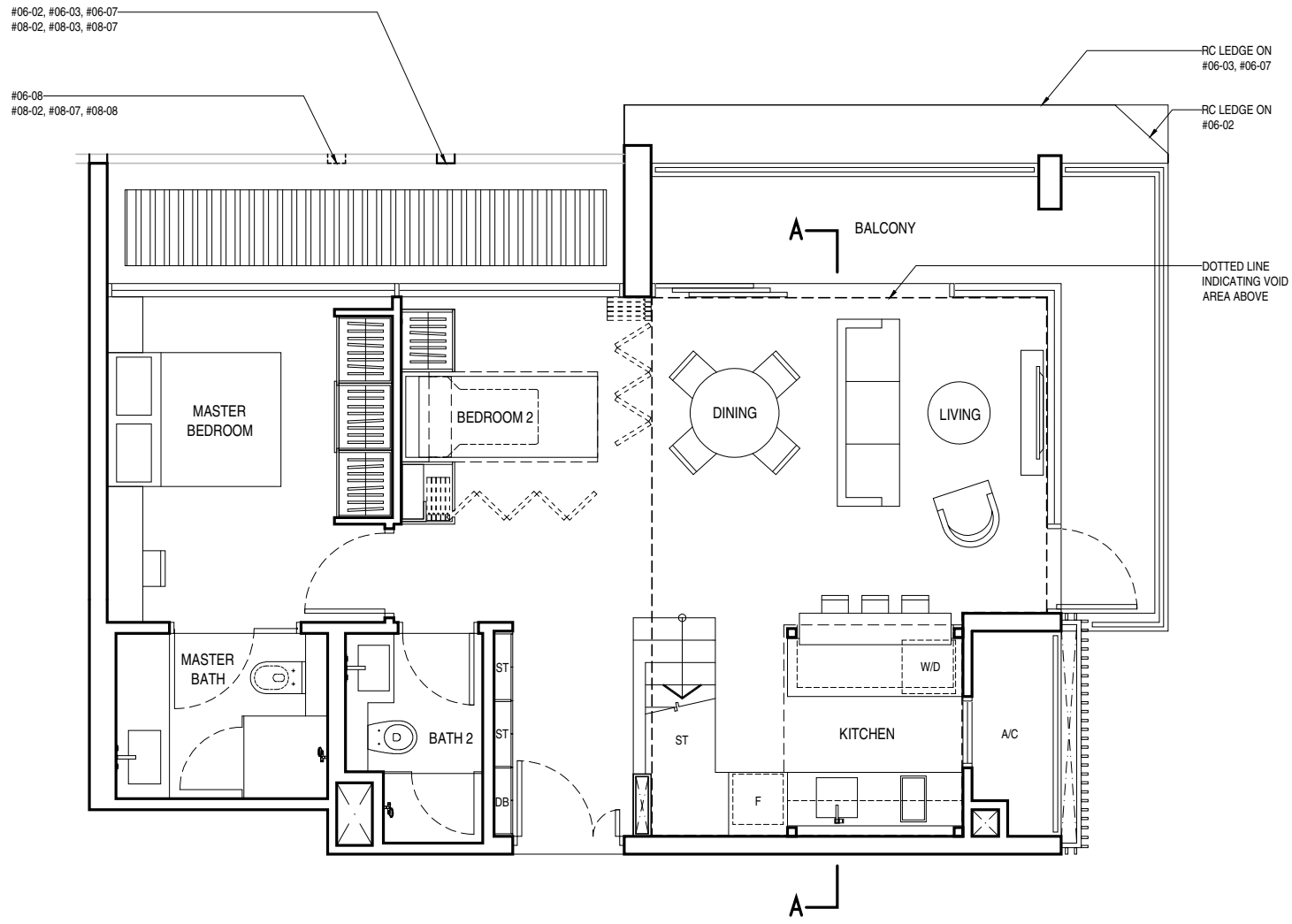
TYPE C3a4(PES)



**KEY PLAN**



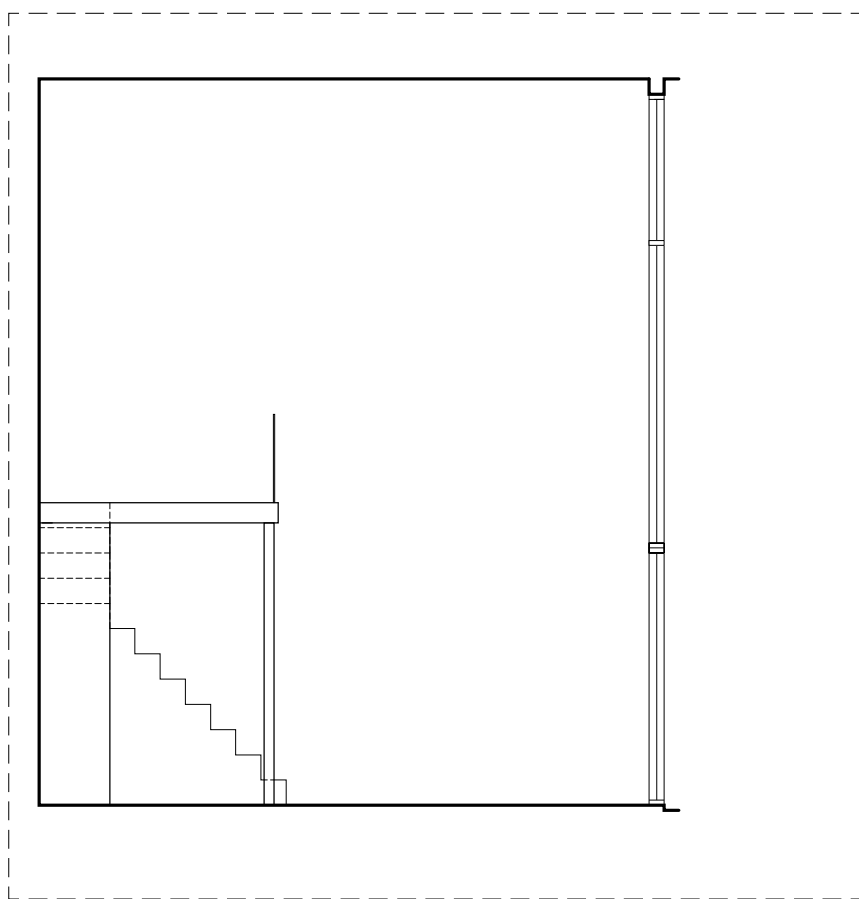
**ISOMETRIC VIEW OF  
FURNITURE DECK**



**TYPE C3a  
2 BEDROOM**

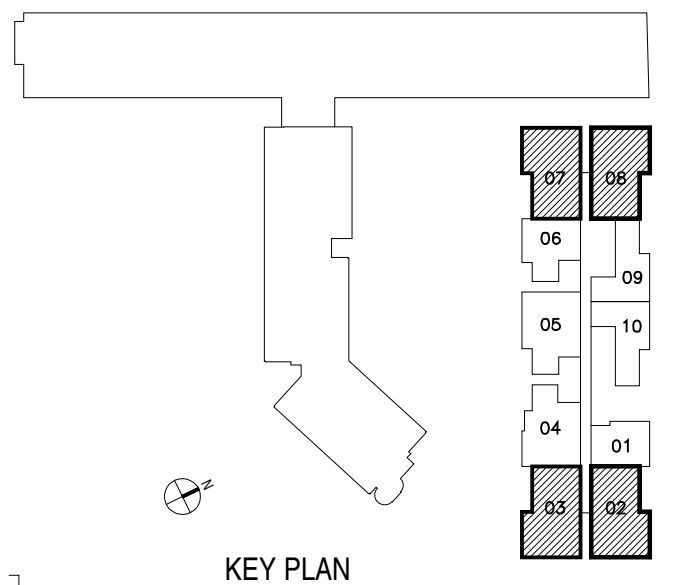
104 sq.m. / 1,119 sq.ft. (including void area of 26 sq.m./280 sq.ft. above living, dining and kitchen)

- #06-02 #06-03 (MIRROR)
- #06-07 #06-08 (MIRROR)
- #08-02 #08-03 (MIRROR)
- #08-07 #08-08 (MIRROR)

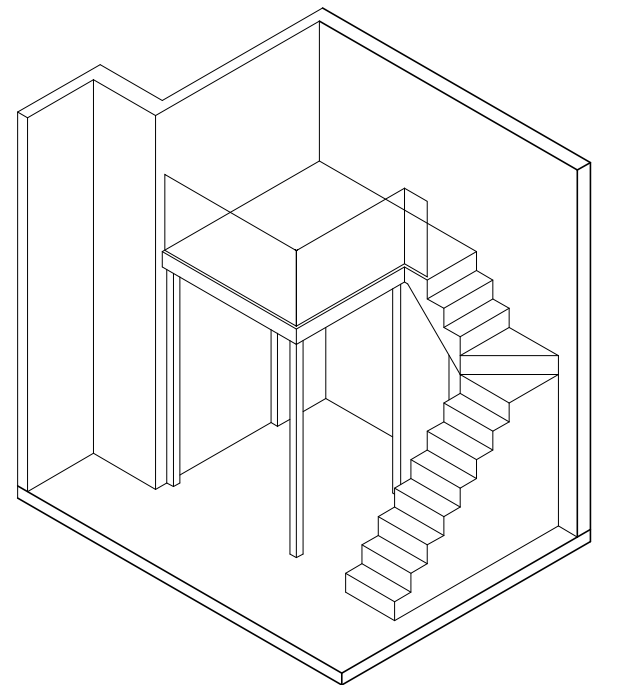


**PART SECTION A-A**  
FLOOR TO FLOOR 7.20 m. ABOVE LIVING/  
DINING AND KITCHEN

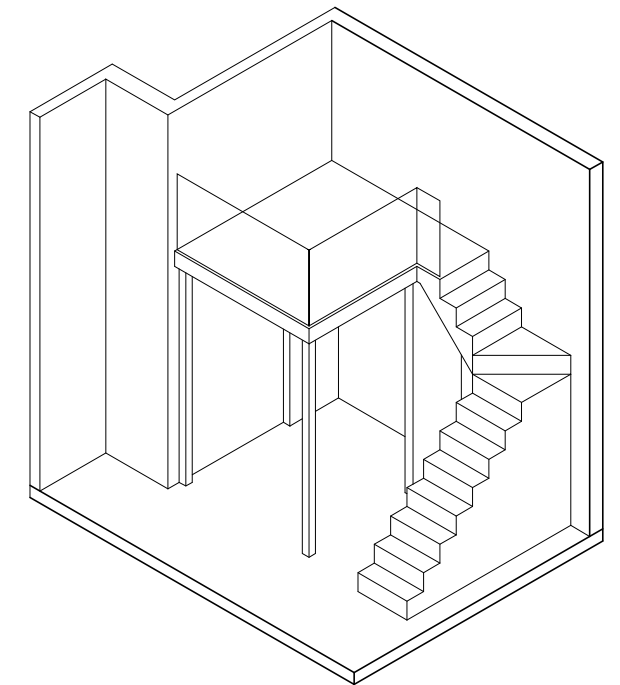
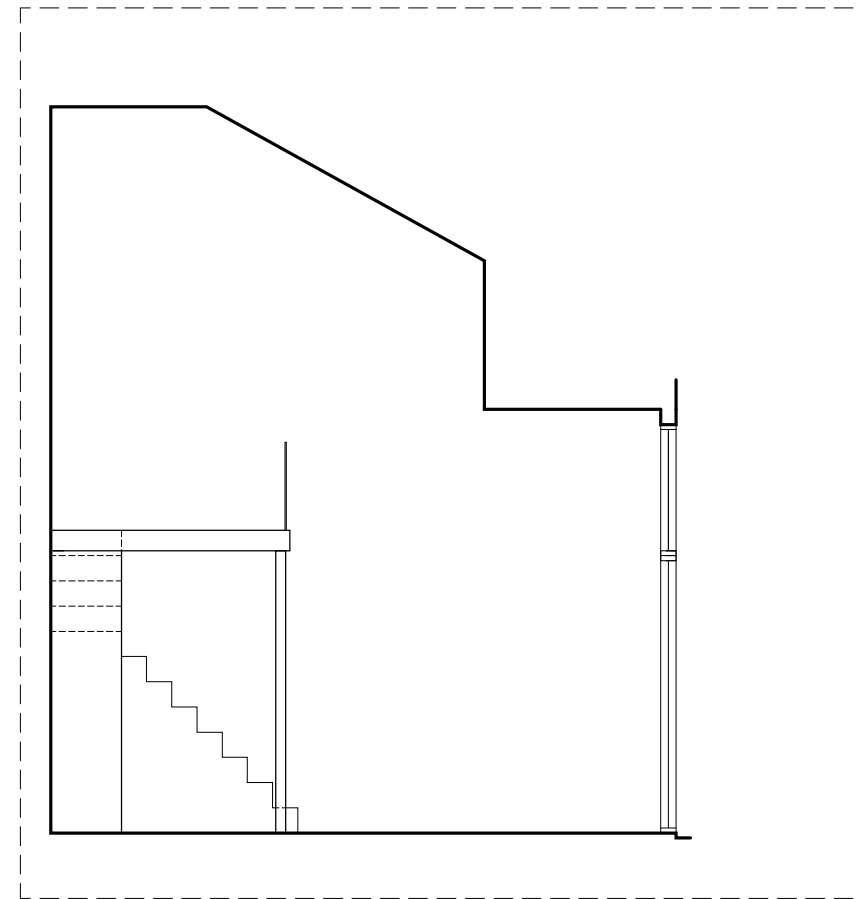
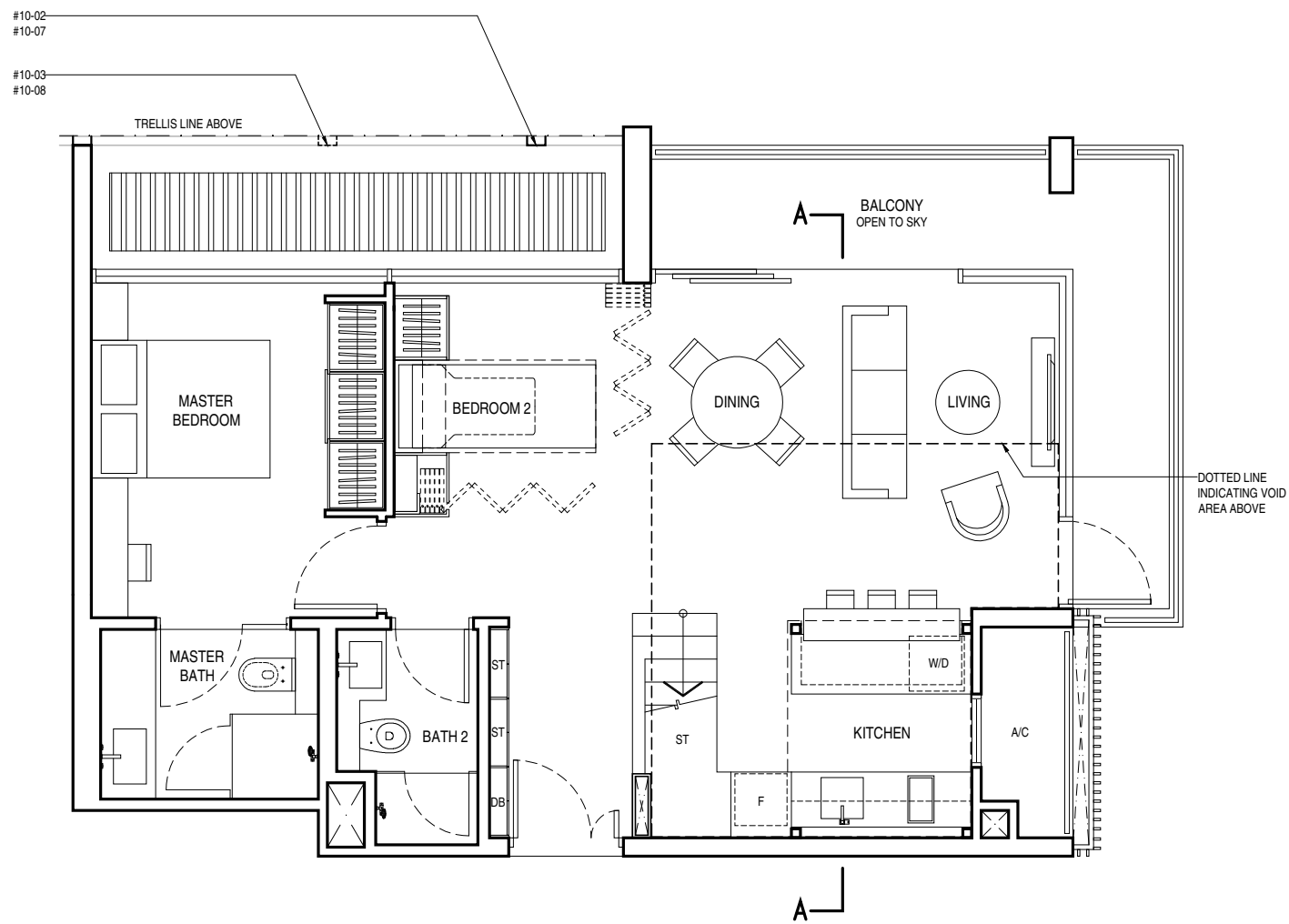
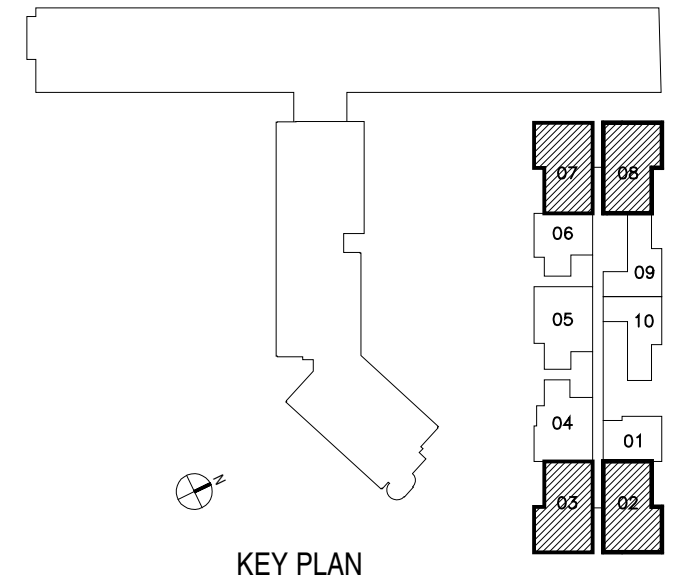
TYPE C3a



**KEY PLAN**



**ISOMETRIC VIEW OF  
FURNITURE DECK**



**TYPE C3c  
2 BEDROOM**

97 sq.m. / 1,044 sq.ft. (including void area of 19 sq.m./205 sq.ft. above living, dining and kitchen)

#10-02 #10-03 (MIRROR)  
#10-07 #10-08 (MIRROR)

**PART SECTION A-A**  
FLOOR TO ROOF VARIES FROM 4.20m TO 7.20m

TYPE C3c

**ISOMETRIC VIEW OF  
FURNITURE DECK**