

KEY PLAN

(Subject to Final Amendments & Authorities' Approvals)

Q BAY RESIDENCES : DIAGRAMMATIC UNIT DISTRIBUTION CHART (Draft & Subject to Final Amendments & Authorities's Approvals)

BLOCK 17 (TRIO)				
UNIT LEVEL	38	39	40	41
16	TR-CT	TR-DT	TR-BST	TR-BST
15	TR-C	TR-D	TR-BS	TR-BS
14	TR-C	TR-D	TR-BS	TR-BS
13	TR-C	TR-D	TR-BS	TR-BS
12	TR-C	TR-D	TR-BS	TR-BS
11	TR-C	TR-D	TR-BS	TR-BS
10	TR-C	TR-D	TR-BS	TR-BS
9	TR-C	TR-D	TR-BS	TR-BS
8	TR-C	TR-D	TR-BS	TR-BS
7	TR-C	TR-D	TR-BS	TR-BS
6	TR-C	TR-D	TR-BS	TR-BS
5	TR-C	TR-D	TR-BS	TR-BS
4	TR-C	TR-D	TR-BS	TR-BS
3	TR-C	TR-D	TR-BS	TR-BS
2	TR-Cp1	TR-Dp	TR-BS	TR-BS
1			TR-BSp	TR-BSp

BLOCK 15 (TRIO)				
UNIT LEVEL	34	35	36	37
16	TR-CT	TR-CT	TR-CT	TR-BST
15	TR-C	TR-C	TR-C	TR-BS
14	TR-C	TR-C	TR-C	TR-BS
13	TR-C	TR-C	TR-C	TR-BS
12	TR-C	TR-C	TR-C	TR-BS
11	TR-C	TR-C	TR-C	TR-BS
10	TR-C	TR-C	TR-C	TR-BS
9	TR-C	TR-C	TR-C	TR-BS
8	TR-C	TR-C	TR-C	TR-BS
7	TR-C	TR-C	TR-C	TR-BS
6	TR-C	TR-C	TR-C	TR-BS
5	TR-C	TR-C	TR-C	TR-BS
4	TR-C	TR-C	TR-C	TR-BS
3	TR-C	TR-C	TR-C	TR-BS
2	TR-Cp1	TR-Cp1	TR-C	TR-BS
1			TR-Cp	TR-BSp

BLOCK 11 (CONDO)				
UNIT LEVEL	30	31	32	33
16	Cc1T	ET	Cc2T	Cc2T
15	Cc1	E	Cc2	Cc2
14	Cc1	E	Cc2	Cc2
13	Cc1	E	Cc2	Cc2
12	Cc1	E	Cc2	Cc2
11	Cc1	E	Cc2	Cc2
10	Cc1	E	Cc2	Cc2
9	Cc1	E	Cc2	Cc2
8	Cc1	E	Cc2	Cc2
7	Cc1	E	Cc2	Cc2
6	Cc1	E	Cc2	Cc2
5	Cc1	E	Cc2	Cc2
4	Cc1	E	Cc2	Cc2
3	Cc1	E	Cc2	Cc2
2	Cc1p	Ep	Cc2	Cc2
1			Cc2p	Cc2p

BLOCK 5 (CONDO)				
UNIT LEVEL	18	19	20	21
16	VH-CaT	VH-CT	VH-CT	VH-CT
15	VH-Ca	VH-C	VH-C	VH-C
14	VH-Ca	VH-C	VH-C	VH-C
13	VH-Ca	VH-C	VH-C	VH-C
12	VH-Ca	VH-C	VH-C	VH-C
11	VH-Ca	VH-C	VH-C	VH-C
10	VH-Ca	VH-C	VH-C	VH-C
9	VH-Ca	VH-C	VH-C	VH-C
8	VH-Ca	VH-C	VH-C	VH-C
7	VH-Ca	VH-C	VH-C	VH-C
6	VH-Ca	VH-C	VH-C	VH-C
5	VH-Ca	VH-C	VH-C	VH-C
4	VH-Ca	VH-C	VH-C	VH-C
3	VH-Ca	VH-C	VH-C	VH-C
2	VH-Cap1	VH-Cp3	VH-C	
1			VH-Cp	

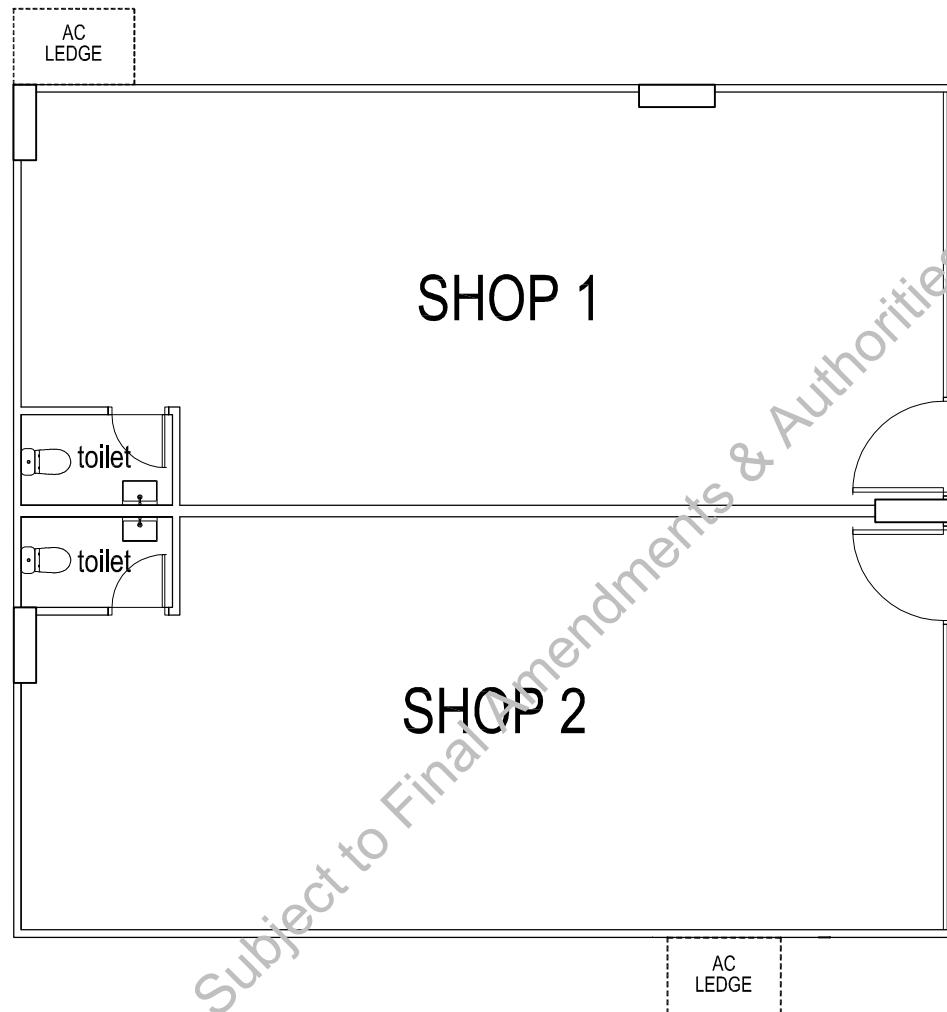
BLOCK 7 (CONDO)				
UNIT LEVEL	22	23	24	25
16	VH-CaT	VH-DT	VH-DT	VH-CT
15	VH-Ca	VH-D	VH-D	VH-C
14	VH-Ca	VH-D	VH-D	VH-C
13	VH-Ca	VH-D	VH-D	VH-C
12	VH-Ca	VH-D	VH-D	VH-C
11	VH-Ca	VH-D	VH-D	VH-C
10	VH-Ca	VH-D	VH-D	VH-C
9	VH-Ca	VH-D	VH-D	VH-C
8	VH-Ca	VH-D	VH-D	VH-C
7	VH-Ca	VH-D	VH-D	VH-C
6	VH-Ca	VH-D	VH-D	VH-C
5	VH-Ca	VH-D	VH-D	VH-C
4	VH-Ca	VH-D	VH-D	VH-C
3	VH-Ca	VH-D	VH-D	VH-C
2	VH-Cap	VH-Dp	VH-Dp1	VH-Cp1
1				

BLOCK 9 (CONDO)				
UNIT LEVEL	26	27	28	29
16	Cc1T	VH-CT	VH-DT	Cc1T
15	Cc1	VH-C	VH-D	Cc1
14	Cc1	VH-C	VH-D	Cc1
13	Cc1	VH-C	VH-D	Cc1
12	Cc1	VH-C	VH-D	Cc1
11	Cc1	VH-C	VH-D	Cc1
10	Cc1	VH-C	VH-D	Cc1
9	Cc1	VH-C	VH-D	Cc1
8	Cc1	VH-C	VH-D	Cc1
7	Cc1	VH-C	VH-D	Cc1
6	Cc1	VH-C	VH-D	Cc1
5	Cc1	VH-C	VH-D	Cc1
4	Cc1	VH-C	VH-D	Cc1
3	Cc1	VH-C	VH-D	Cc1
2	Cc1p	VH-Cp2	VH-Dp	Cc1p
1				

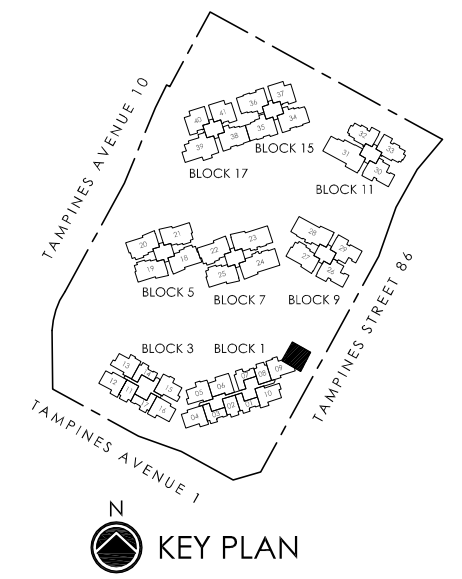
BLOCK 3 (SUITES)							
UNIT LEVEL	11	12	13	14	15	16	17
16	AST	BT	BST	AT	BST1	BT1	AT
15	AS	B	BS	A	BS	B	A
14	AS	B	BS	A	BS	B	A
13	AS	B	BS	A	BS	B	A
12	AS	B	BS	A	BS	B	A
11	AS	B	BS	A	BS	B	A
10	AS	B	BS	A	BS	B	A
9	AS	B	BS	A	BS	B	A
8	AS	B	BS	A	BS	B	A
7	AS	B	BS	A	BS	B	A
6	AS	B	BS	A	BS	B	A
5	AS	B	BS	A	BS	B	A
4	AS	B	BS	A	BS	B	A
3	AS	B	BS	A	BS	B	A
2	AS	B	BSp1	Ap1	BSp	B	A
1	Asp	B-bp1				B-ap	Ap

BLOCK 1 (SUITES)										
UNIT LEVEL	1	2	3	4	5	6	7	8	9	10
16	AT	AST	AT	BT	BST1	B-bT	AT	AST	BST	B-aT
15	A	AS	A	B	BS	B-b	A	AS	BS	B-a
14	A	AS	A	B	BS	B-b	A	AS	BS	B-a
13	A	AS	A	B	BS	B-b	A	AS	BS	B-a
12	A	AS	A	B	BS	B-b	A	AS	BS	B-a
11	A	AS	A	B	BS	B-b	A	AS	BS	B-a
10	A	AS	A	B	BS	B-b	A	AS	BS	B-a
9	A	AS	A	B	BS	B-b	A	AS	BS	B-a
8	A	AS	A	B	BS	B-b	A	AS	BS	B-a
7	A	AS	A	B	BS	B-b	A	AS	BS	B-a
6	A	AS	A	B	BS	B-b	A	AS	BS	B-a
5	A	AS	A	B	BS	B-b	A	AS	BS	B-a
4	A	AS	A	B	BS	B-b	A	AS	BS	B-a
3	A	AS	A	B	BS	B-b	A	AS	BS	B-a
2	A	AS	A	B	BSp2	B-bp	Ap2	ASp1	BSp3	B-a
1	Ap	ASp	Ap	B-ap1						B-ap1

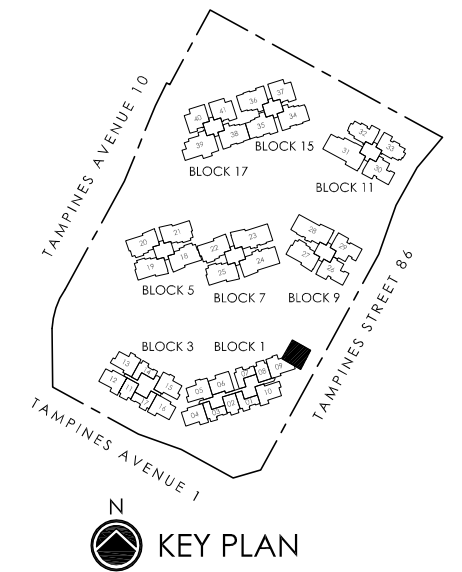
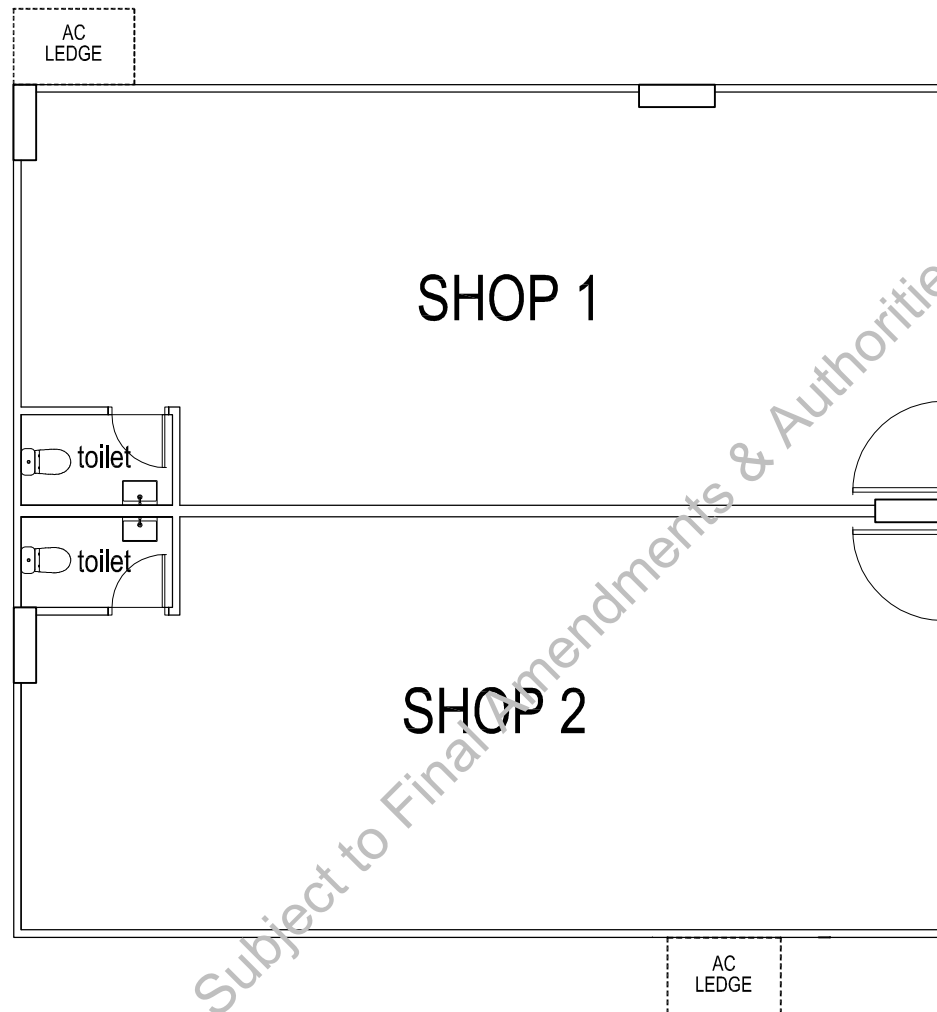
Q Bay - Shop



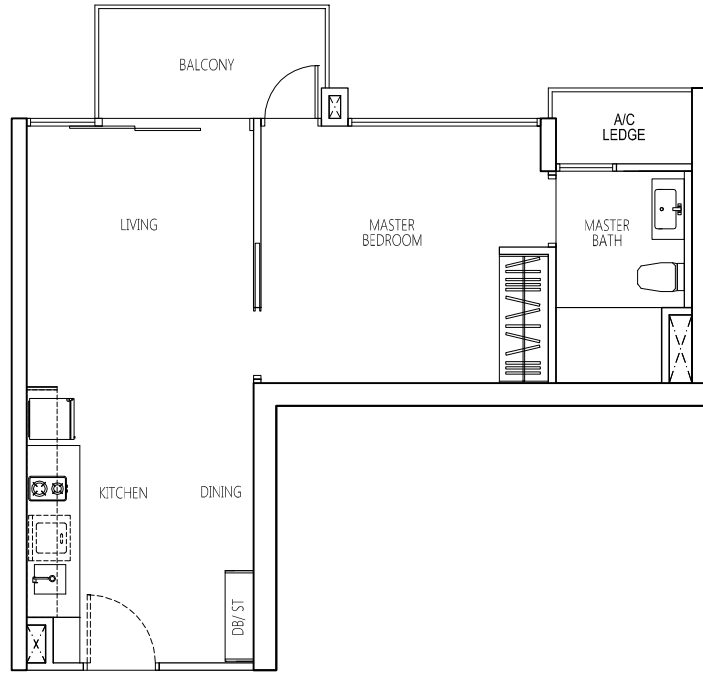
Draft - Subject to Final Amendments & Authorities' Approvals



Q Bay - Shop

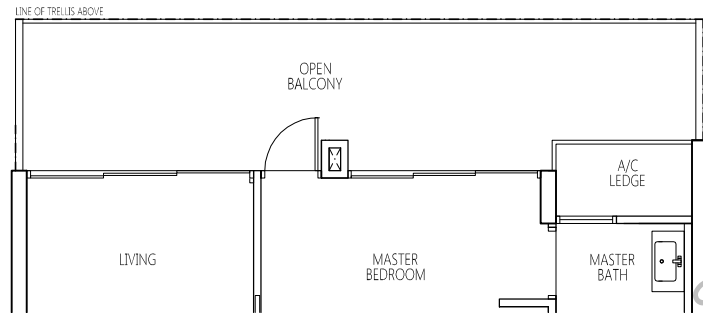


Q Bay - Type A (1-bedroom)



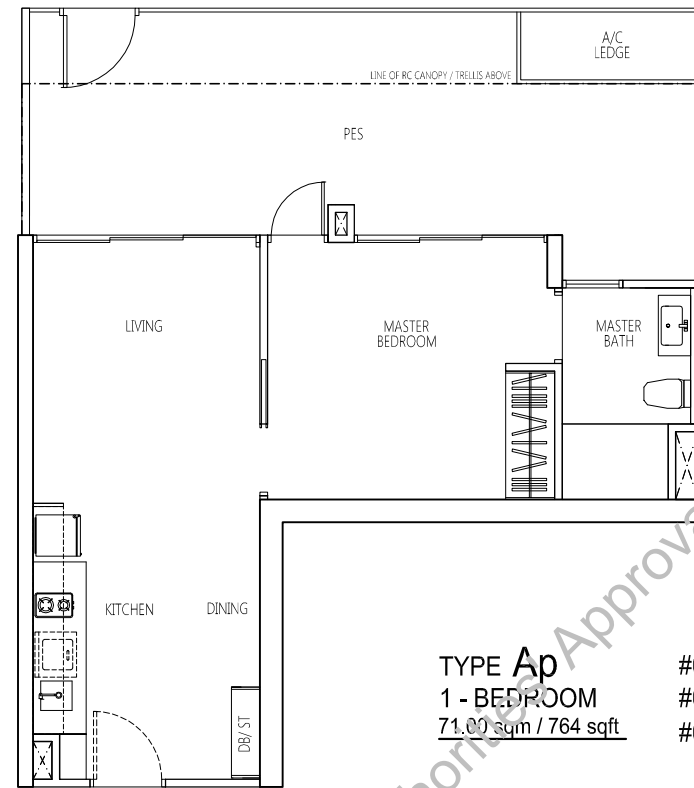
TYPE A
1 - BEDROOM
49.00 sqm / 527 sqft

- #02-01 TO #15-01 (mirror unit)
- #02-03 TO #15-03 (mirror unit)
- #03-07 TO #15-07
- #03-14 TO #15-14
- #02-17 TO #15-17



TYPE AT
1 - BEDROOM
62.00 sqm / 667 sqft

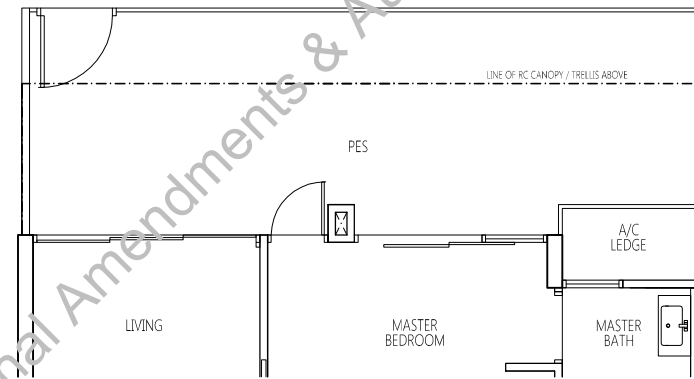
- #16-01 (mirror unit)
- #16-03 (mirror unit)
- #16-07
- #16-14
- #16-17



TYPE Ap
1 - BEDROOM
71.00 sqm / 764 sqft

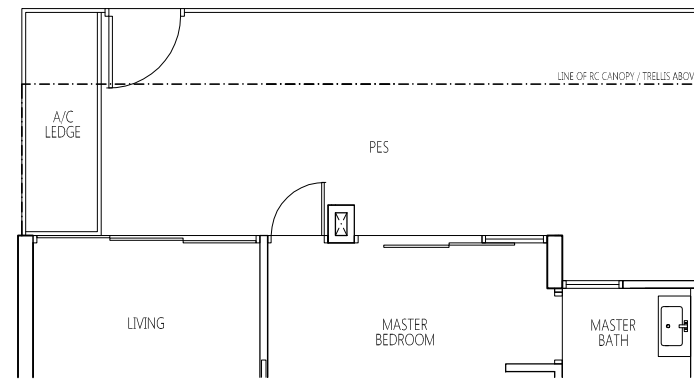
- #01-01 (mirror unit)
- #01-03 (mirror unit)
- #01-17

HIGH CEILING
HIGH CEILING
HIGH CEILING



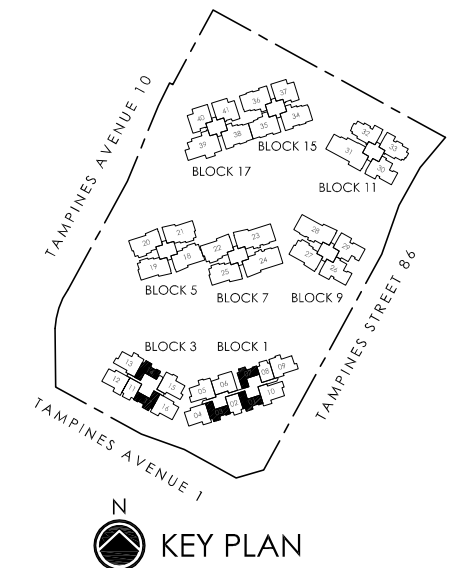
TYPE Ap1
1 - BEDROOM
71.00 sqm / 764 sqft

#02-14



TYPE Ap2
1 - BEDROOM
71.00 sqm / 764 sqft

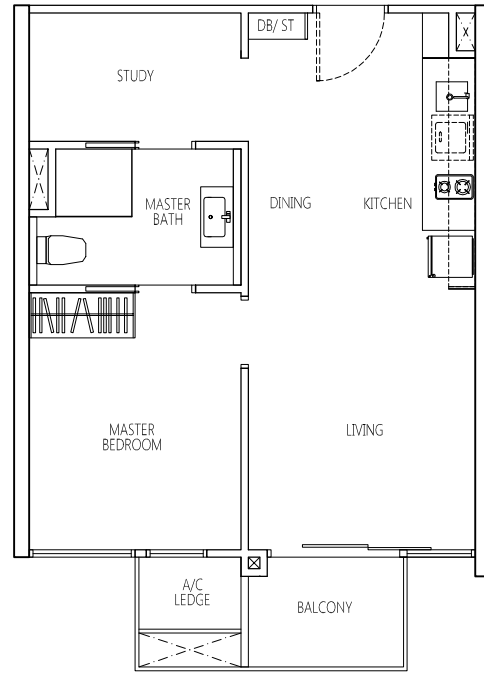
#02-07



KEY PLAN

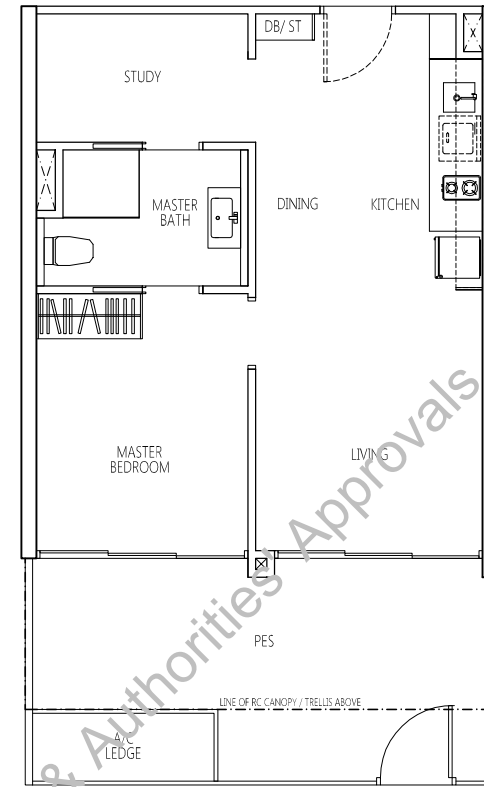


Q Bay - Type AS (1-bedroom with study)



TYPE AS
1 - BEDROOM + STUDY
48.00 sqm / 516 sqft

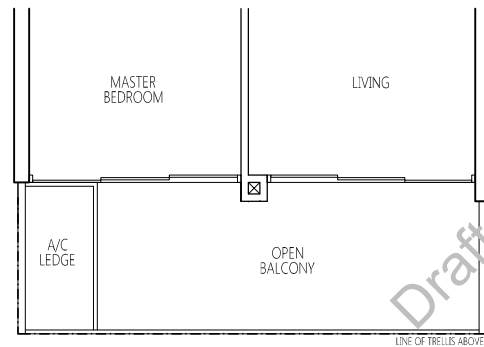
#02-02 TO #15-02
#03-08 TO #15-08 (mirror unit)
#02-11 TO #15-11 (mirror unit)



TYPE ASp
1 - BEDROOM + STUDY
62.00 sqm / 667 sqft

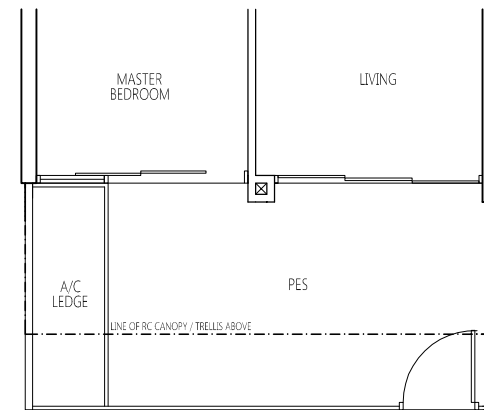
#01-02
#01-11 (mirror unit)

HIGH CEILING
HIGH CEILING



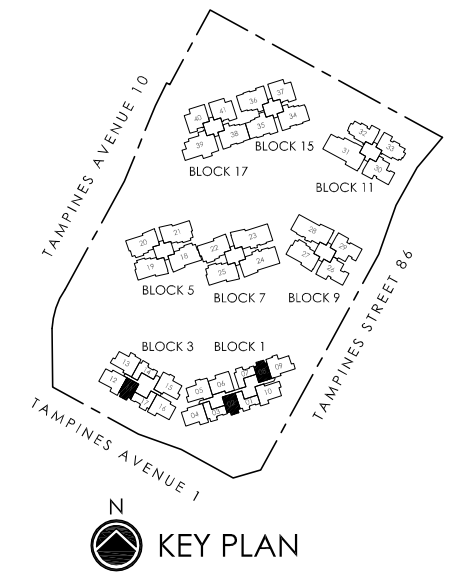
TYPE AST
1 - BEDROOM + STUDY
56.00 sqm / 602 sqft

#16-02
#16-08 (mirror unit)
#16-11 (mirror unit)

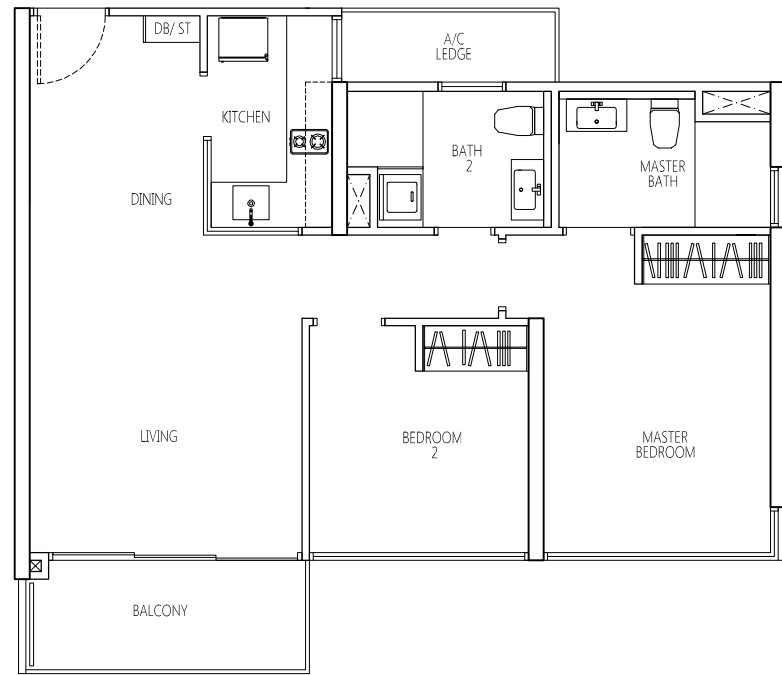


TYPE ASp1
1 - BEDROOM + STUDY
62.00 sqm / 667 sqft

#02-08 (mirror unit)

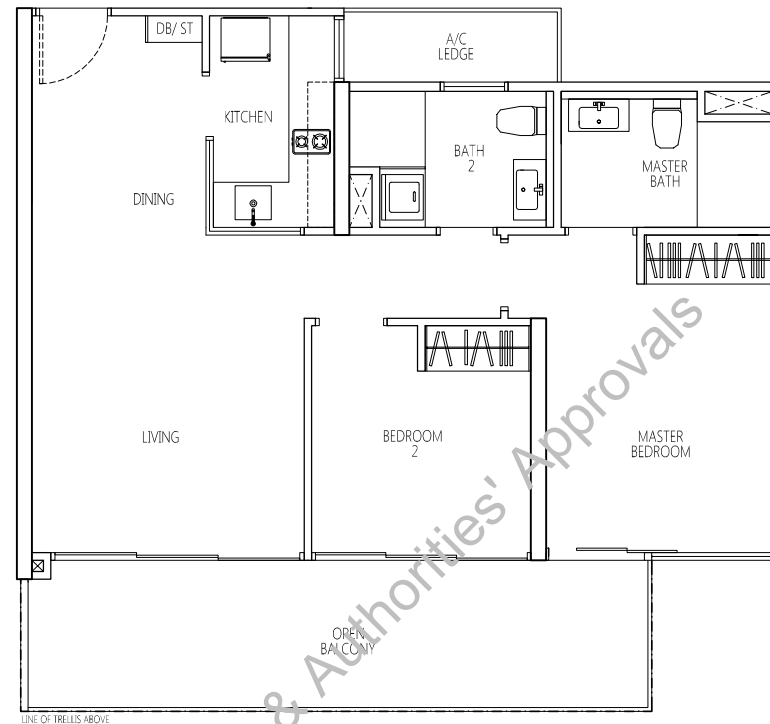


Q Bay - Type B (2-bedroom)



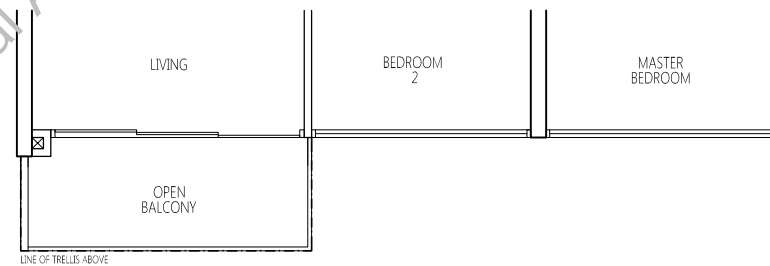
TYPE B
2 - BEDROOM
74.00 sqm / 796 sqft

#02-04 TO #15-04 (mirror unit)
#02-12 TO #15-12 (mirror unit)
#02-16 TO #15-16



TYPE BT
2 - BEDROOM
85.00 sqm / 914 sqft

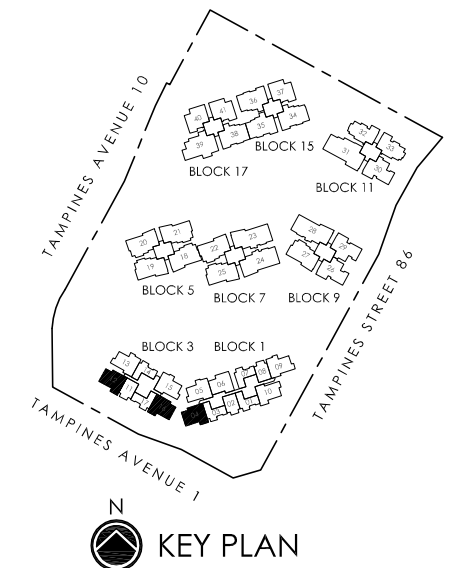
#16-04 (mirror unit)
#16-12 (mirror unit)



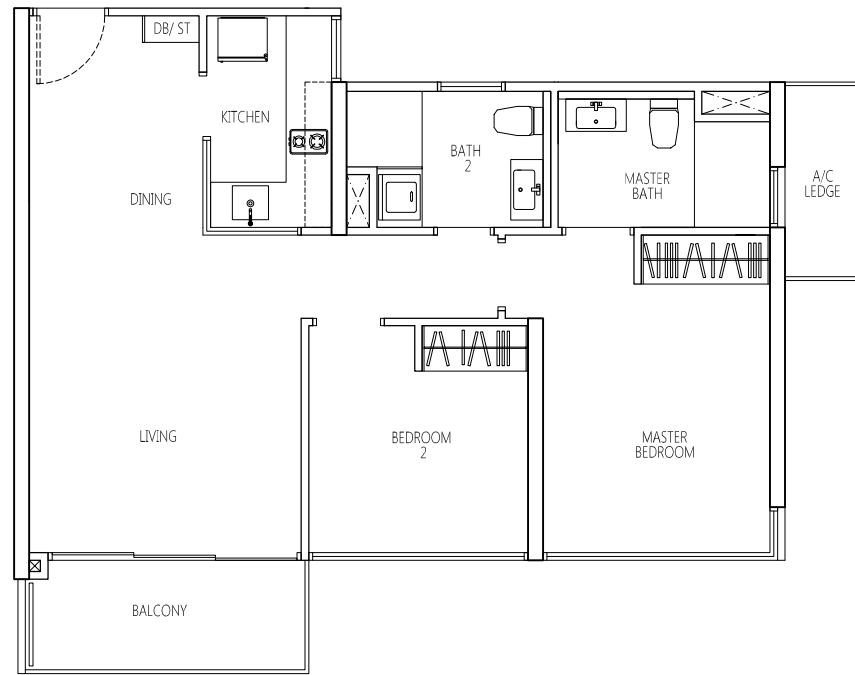
TYPE BT1
2 - BEDROOM
74.00 sqm / 796 sqft

VARIATION AT OPEN BALCONY FOR UNITS
#16-16

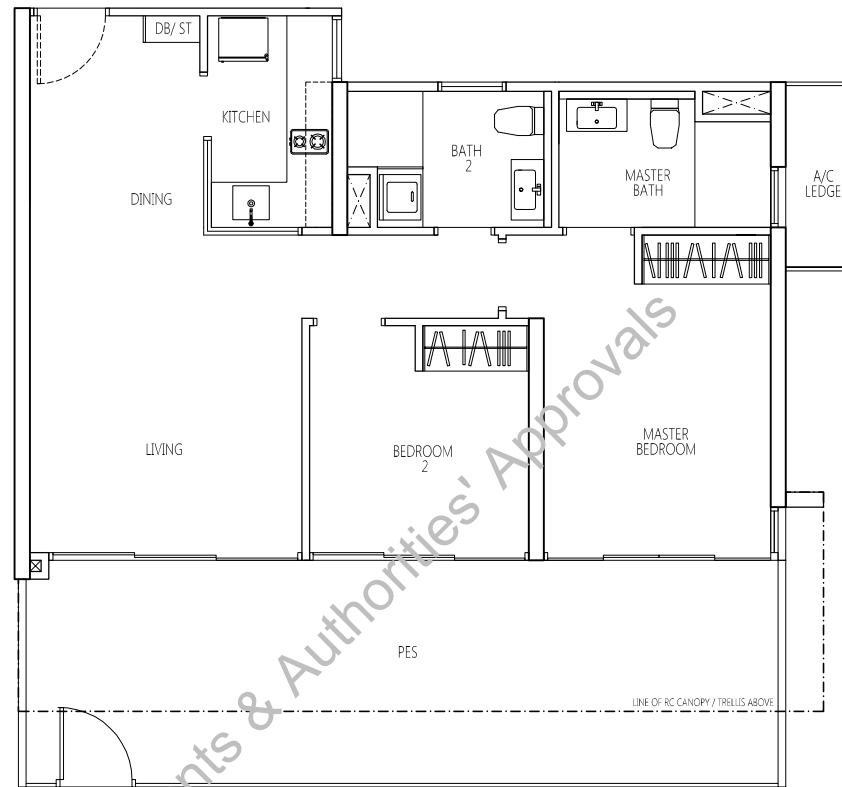
Draft - Subject to Final Amendments & Authorities' Approvals



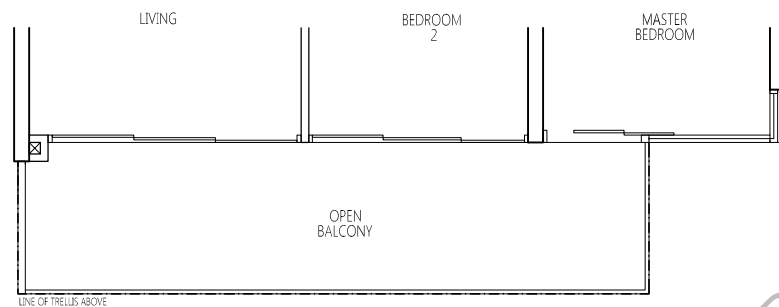
Q Bay - Type B-a (2-bedroom)



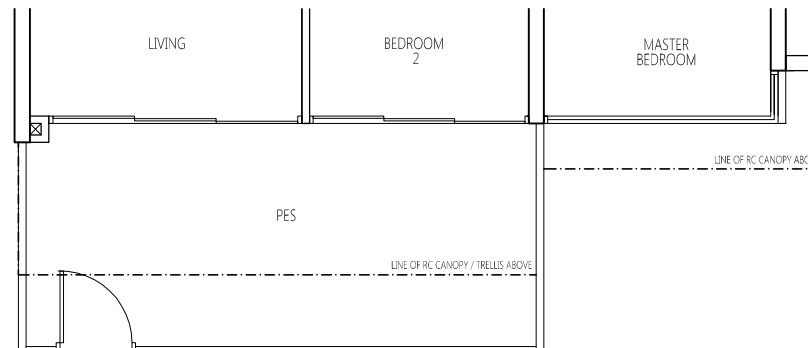
TYPE B-a #02-10 TO #15-10
 2 - BEDROOM
 74.00 sqm / 796 sqft



TYPE B-ap #01-16 **HIGH CEILING**
 2 - BEDROOM
 95.52 sqm / 1028 sqft

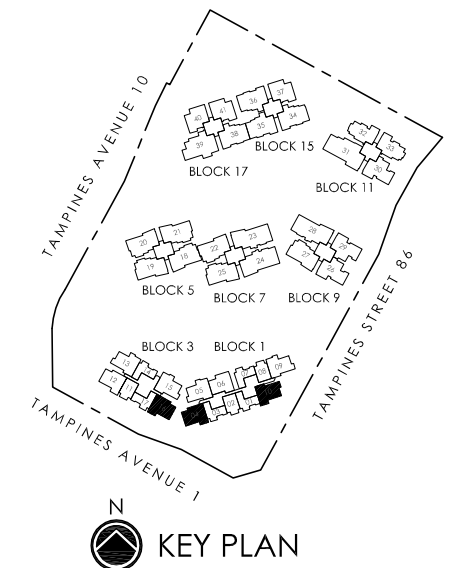


TYPE B-aT #16-10
 2 - BEDROOM
 73.84 sqm / 795 sqft

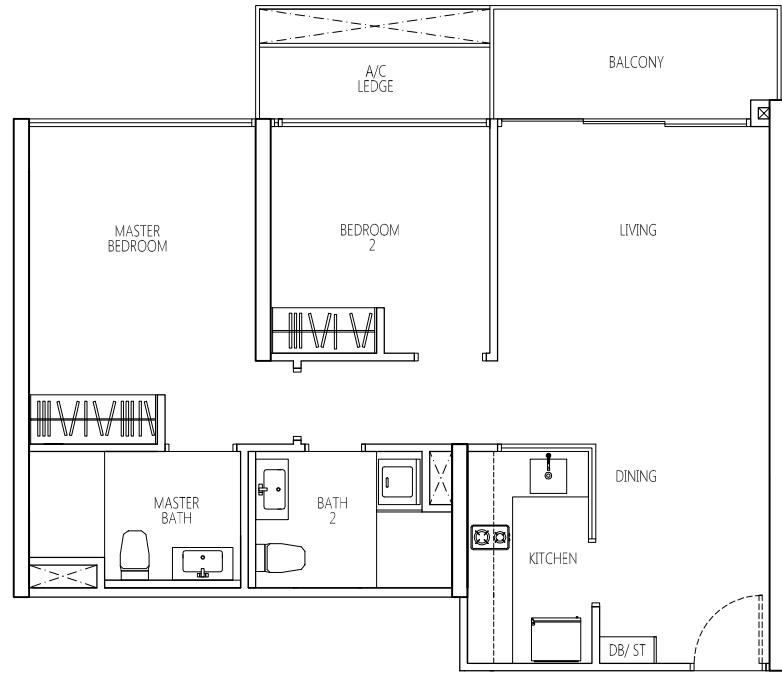


TYPE B-ap1 #01-04 (mirror unit) #01-10 **HIGH CEILING**
 2 - BEDROOM
 85.77 sqm / 923.220 sqft

Draft - Subject to Final Amendments & Authorities' Approvals

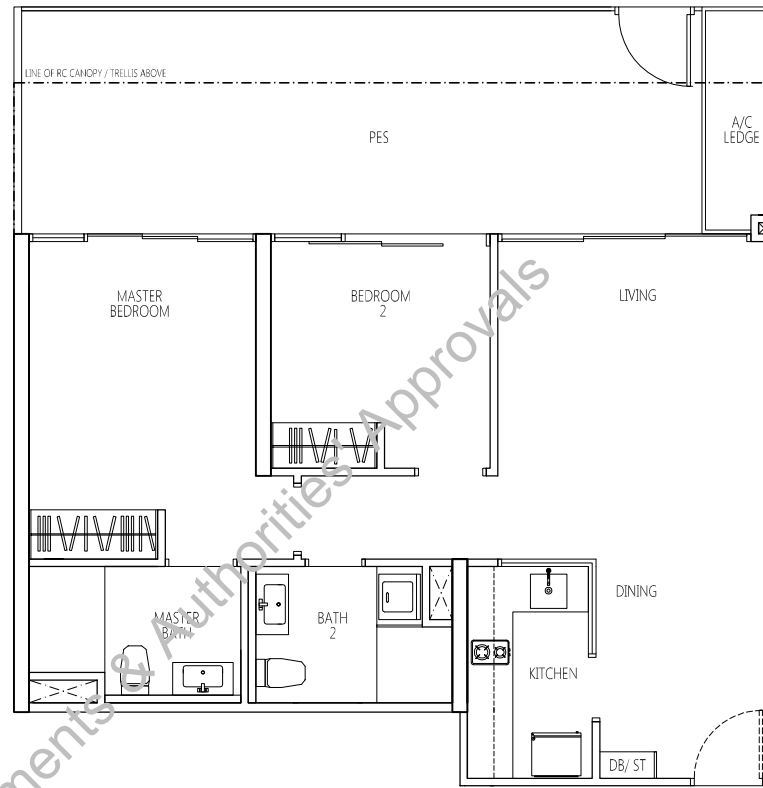


Q Bay - Type B-b (2-bedroom)



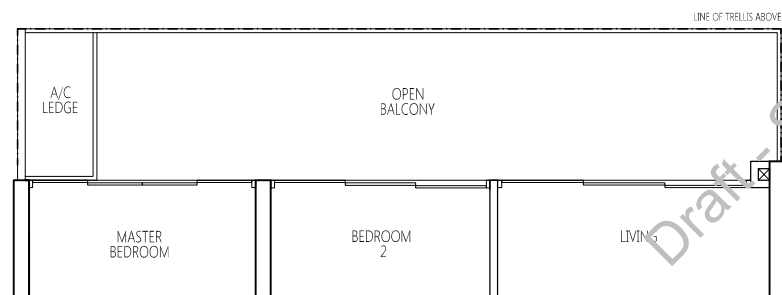
TYPE B-b
2 - BEDROOM
74.00 sqm / 796 sqft

#03-06 TO #15-06



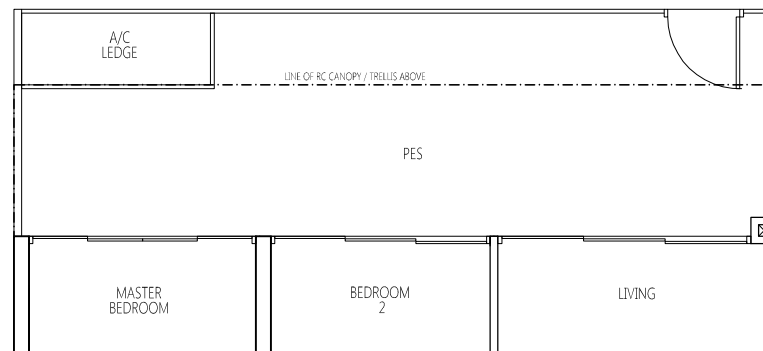
TYPE B-bp
2 - BEDROOM
96.00 sqm / 1033 sqft

#02-06



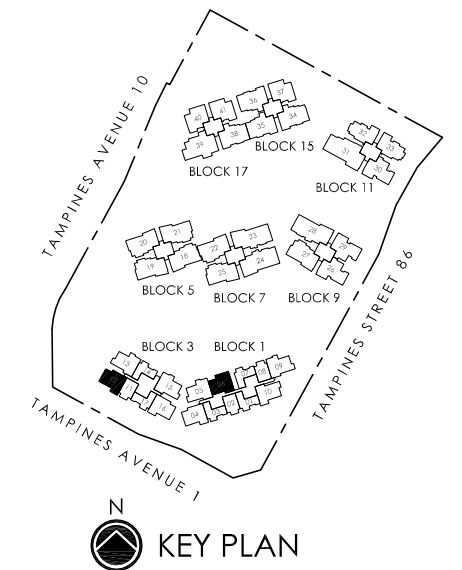
TYPE B-bT
2 - BEDROOM
86.00 sqm / 925 sqft

#16-06



TYPE B-bp1
2 - BEDROOM
96.00 sqm / 1033 sqft

#01-12 (mirror unit) **HIGH CEILING**



KEY PLAN

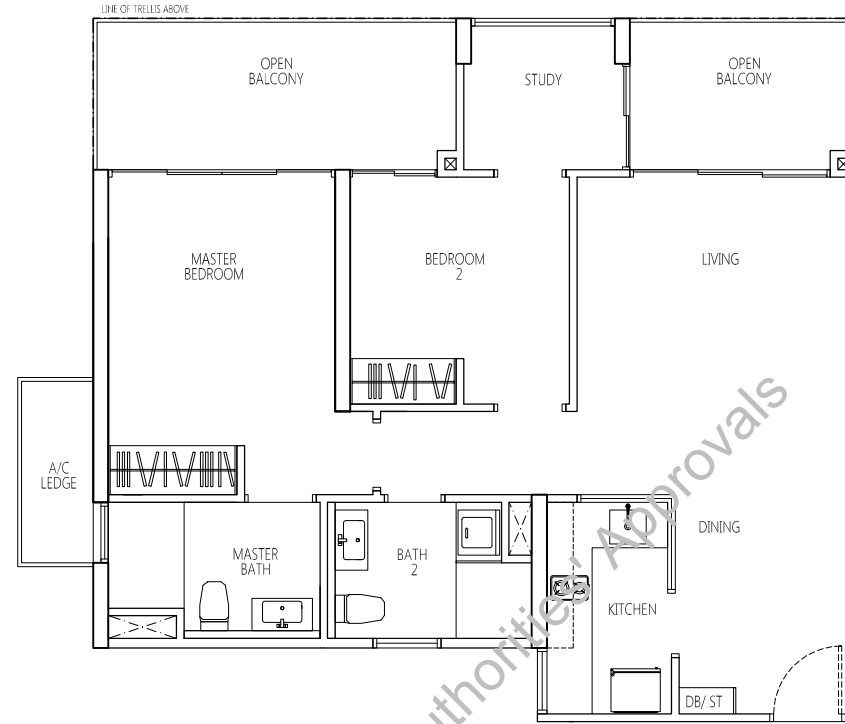


Q Bay - Type BS (2-bedroom + Study)



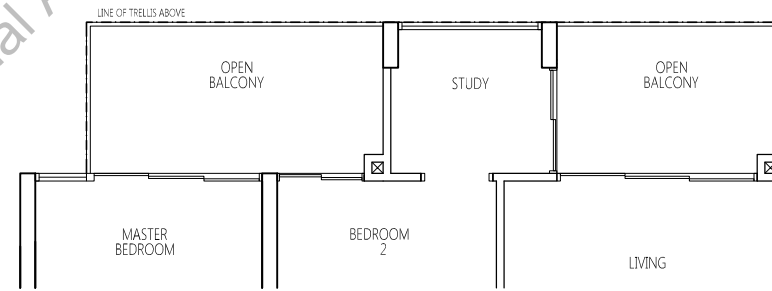
TYPE BS
2 - BEDROOM +STUDY
77.00 sqm / 828 sqft

#03-05 TO #15-05
#03-09 TO #15-09 (mirror unit)
#03-13 TO #15-13
#03-15 TO #15-15 (mirror unit)



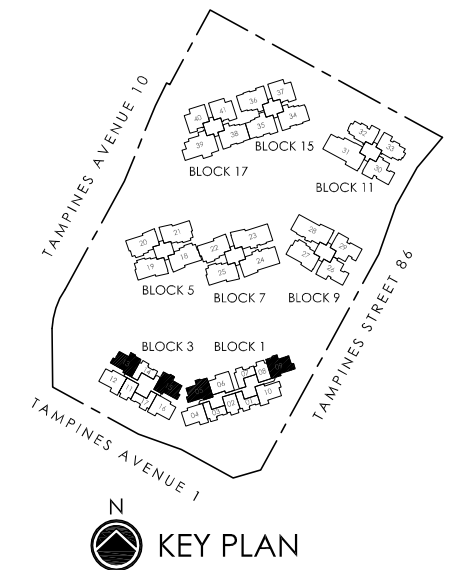
TYPE BST
2 - BEDROOM +STUDY
88.00 sqm / 947 sqft

#16-09 (mirror unit)
#16-13



TYPE BST1
2 - BEDROOM +STUDY
87.00 sqm / 936 sqft

#16-05
#16-15 (mirror unit)

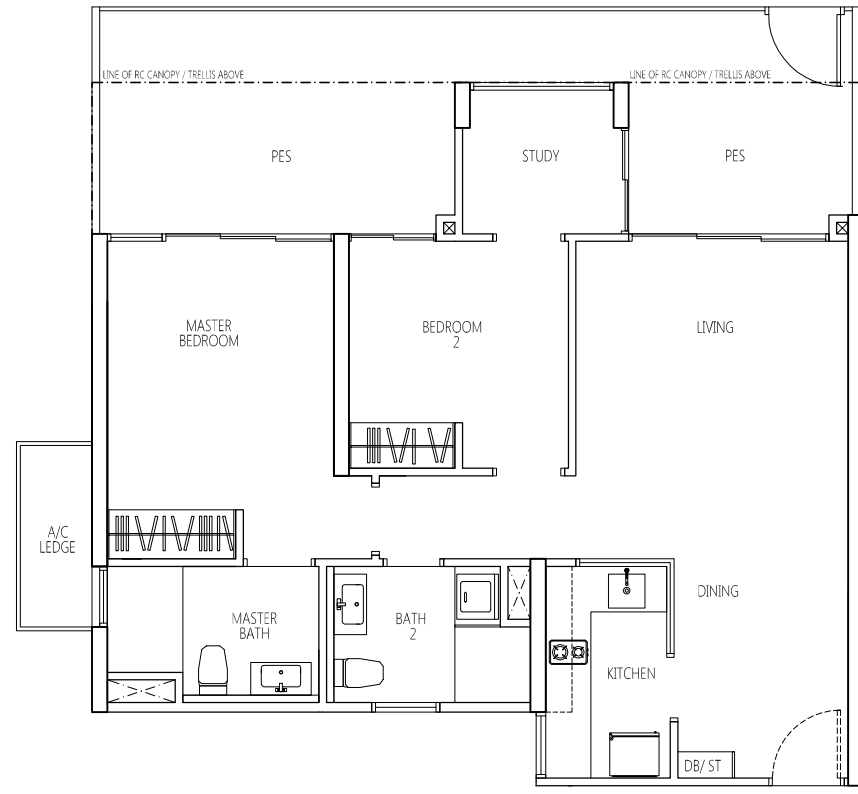


KEY PLAN



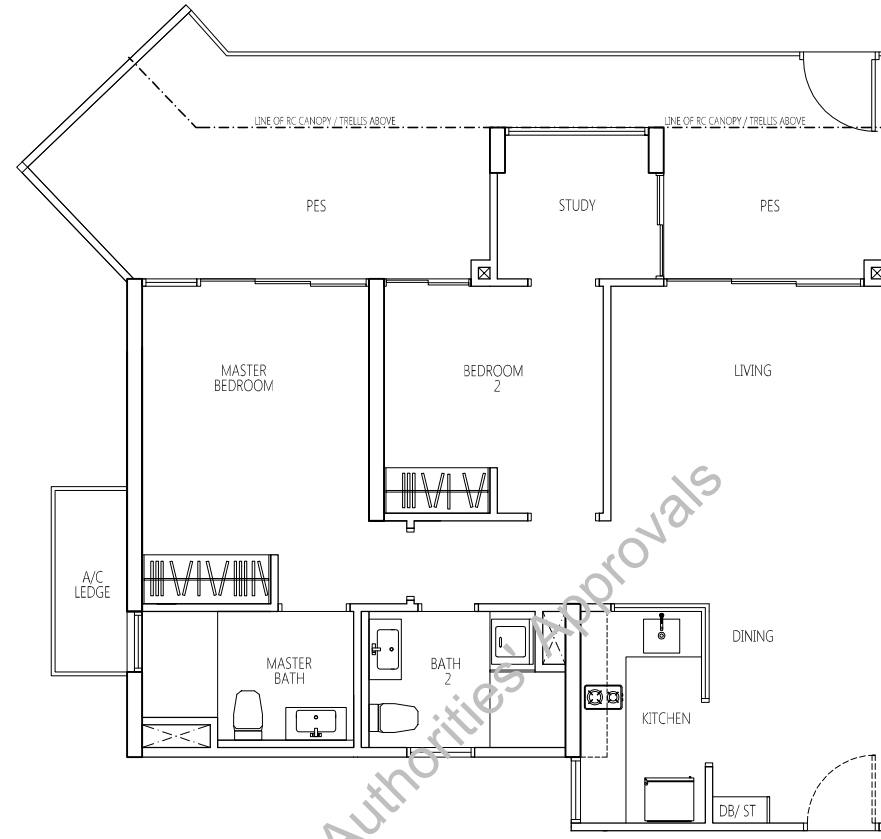
Draft - Subject to Final Amendments & Authorities Approvals

Q Bay - Type BSp (2-bedroom + study + PES)



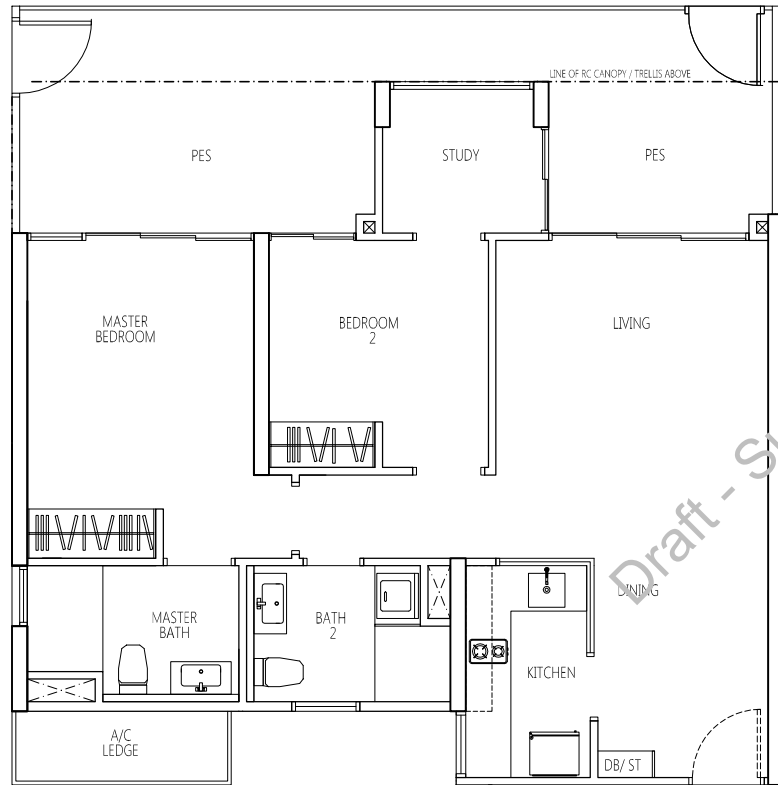
TYPE BSp
2 - BEDROOM +STUDY
98.00 sqm / 1054 sqft

#02-15 (mirror unit)



TYPE BSp2
2 - BEDROOM +STUDY
101.00 sqm / 1087 sqft

#02-05



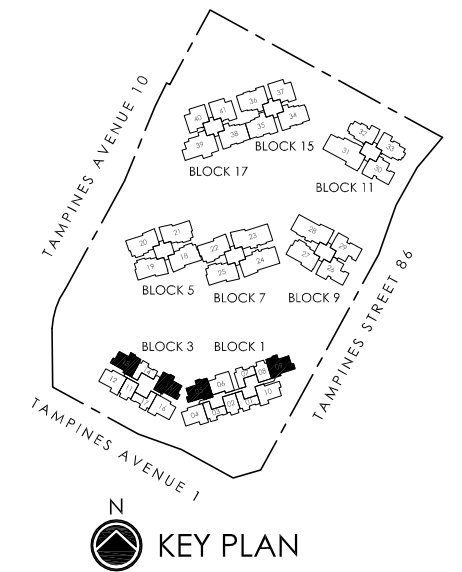
TYPE BSp1
2 - BEDROOM +STUDY
99.00 sqm / 1065 sqft

#02-13

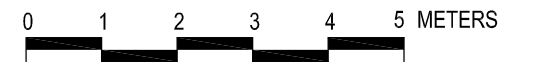


TYPE BSp3
2 - BEDROOM +STUDY
95.66 sqm / 1029 sqft

#02-09 (mirror unit)

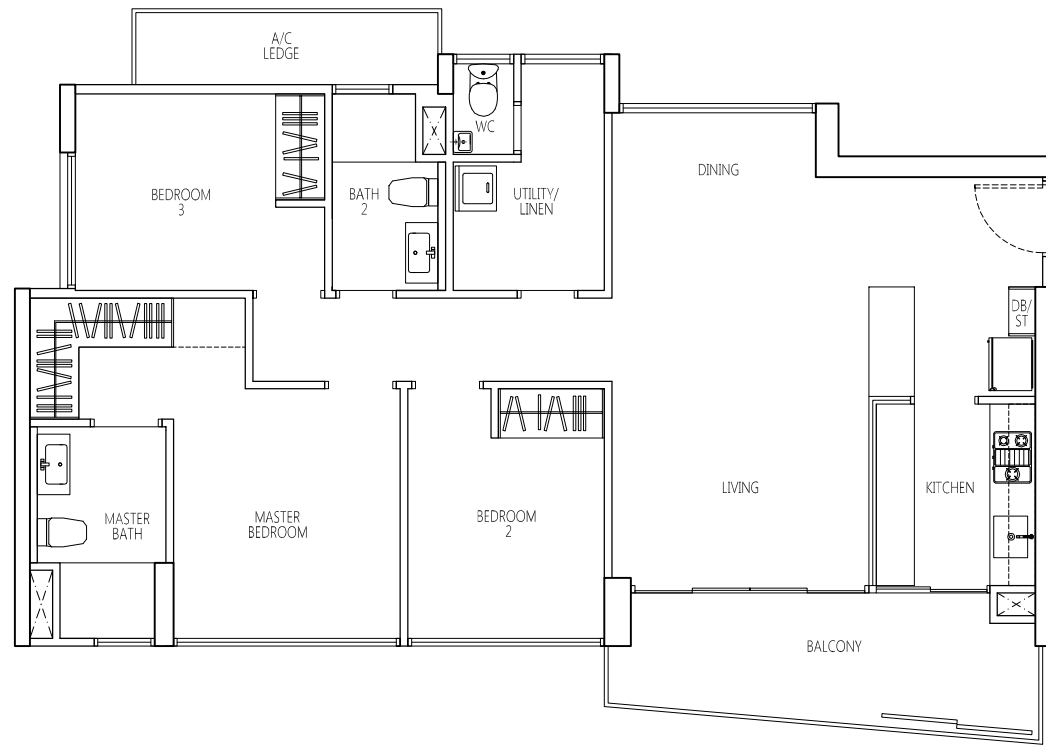


KEY PLAN



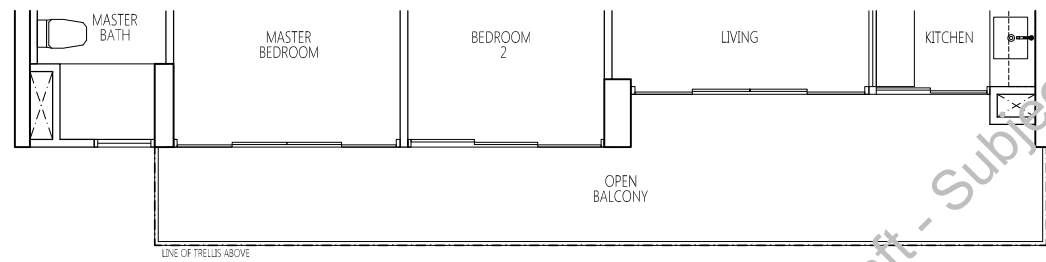
Draft - Subject to Final Amendments & Authorities Approvals

Q Bay - Type C (3-bedroom Verandah Home)



TYPE VH-C
3 - BEDROOM
103.00 sqm / 1108 sqft

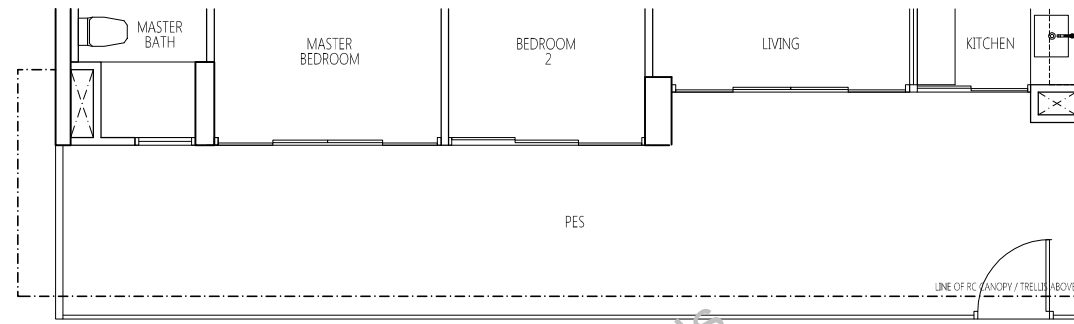
- #03-19 TO #15-19
- #02-20 TO #15-20 (mirror unit)
- #03-21 TO #15-21
- #03-25 TO #15-25
- #03-27 TO #15-27



TYPE VH-CT
3 - BEDROOM
112.00 sqm / 1205 sqft

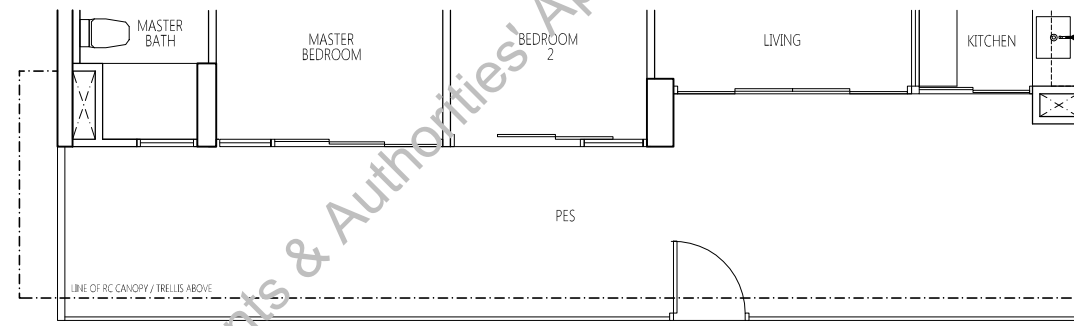
- #16-19
- #16-20 (mirror unit)
- #16-21
- #16-25
- #16-27

VARIATION TO PES IN UNITS



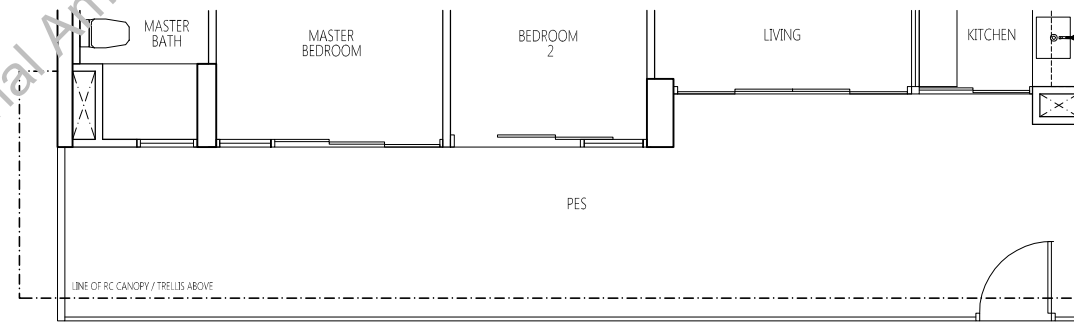
TYPE VH-Cp
3 - BEDROOM
129.00 sqm / 1388 sqft

#01-20 (mirror unit) **HIGH CEILING**



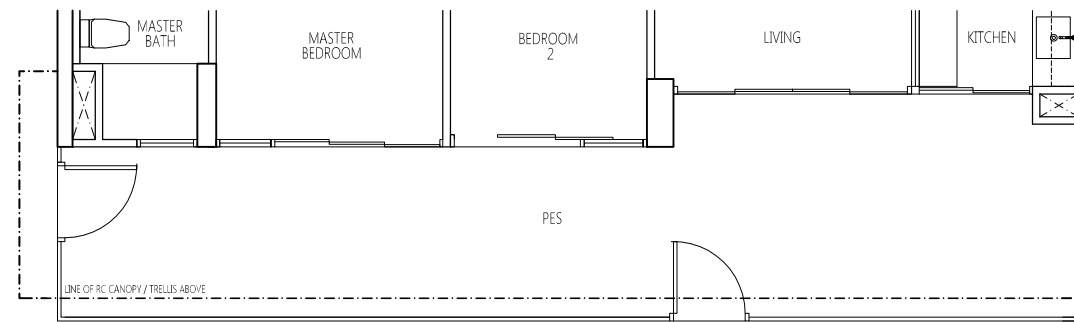
TYPE VH-Cp1
3 - BEDROOM
129.00 sqm / 1388 sqft

#02-25



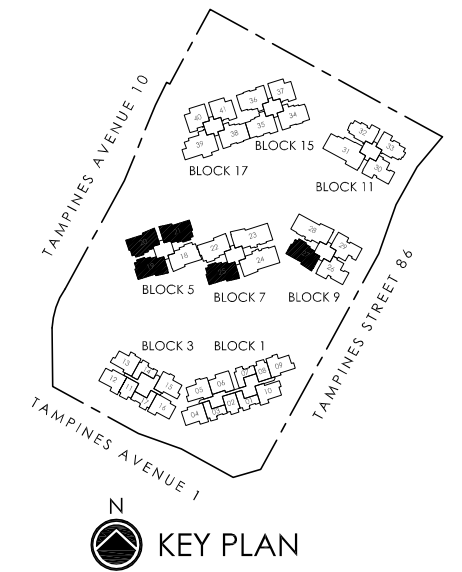
TYPE VH-Cp2
3 - BEDROOM
129.00 sqm / 1388 sqft

#02-27

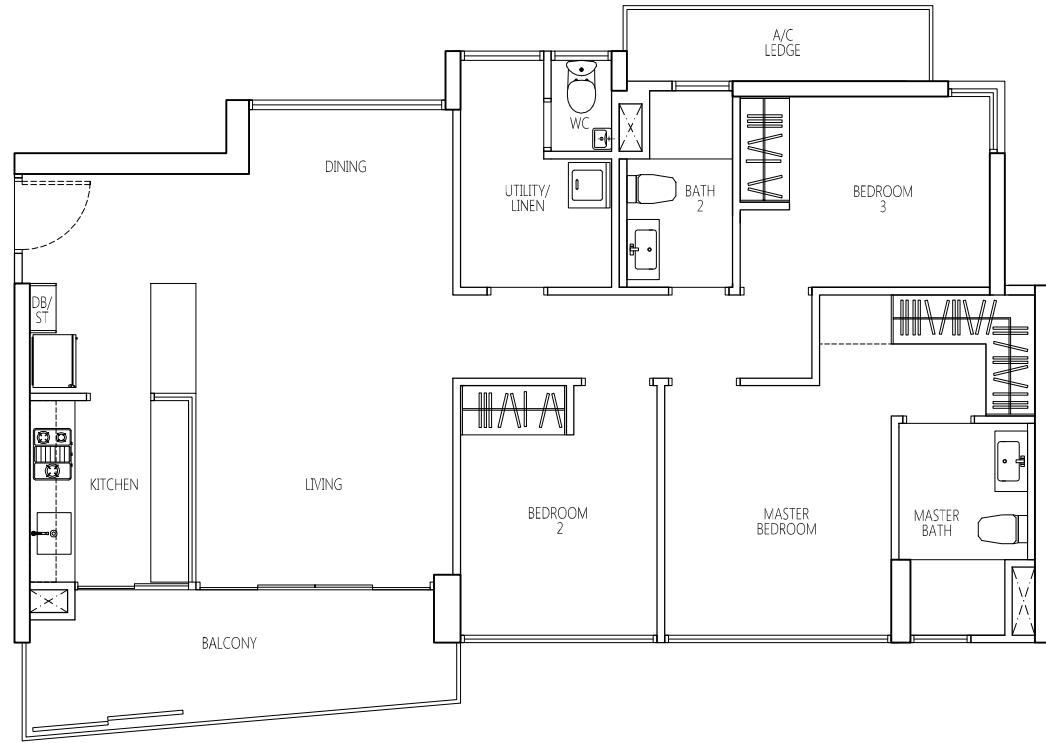


TYPE VH-Cp3
3 - BEDROOM
129.00 sqm / 1388 sqft

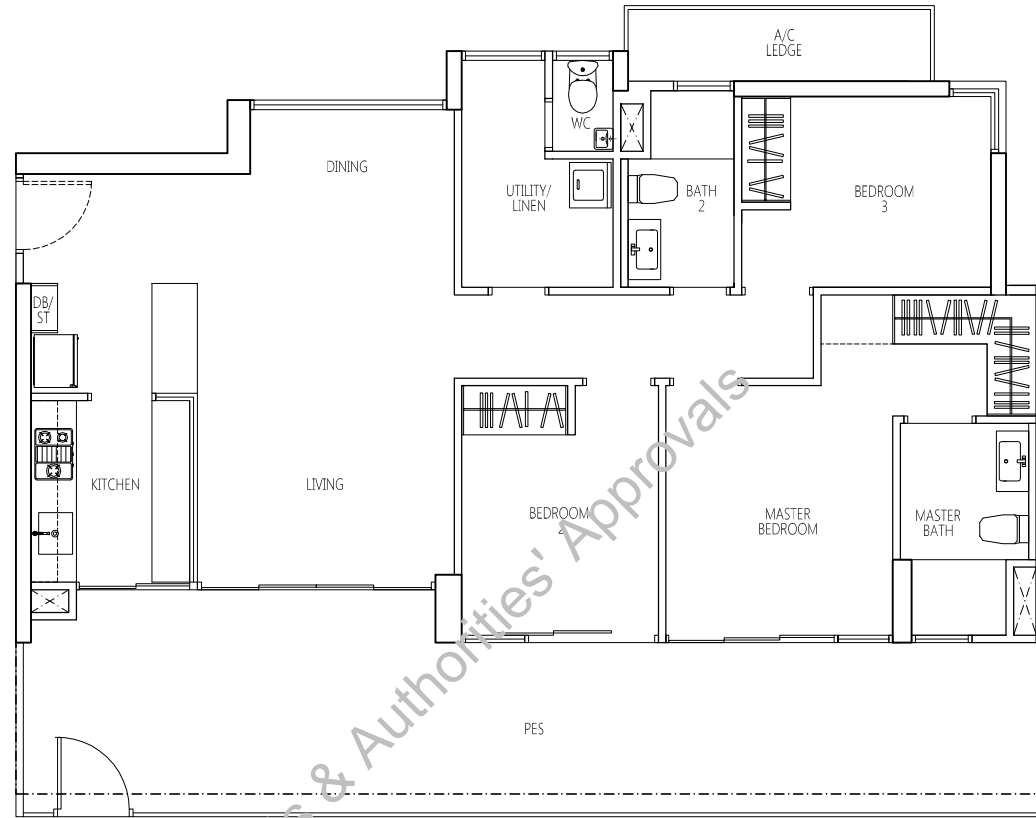
#02-19



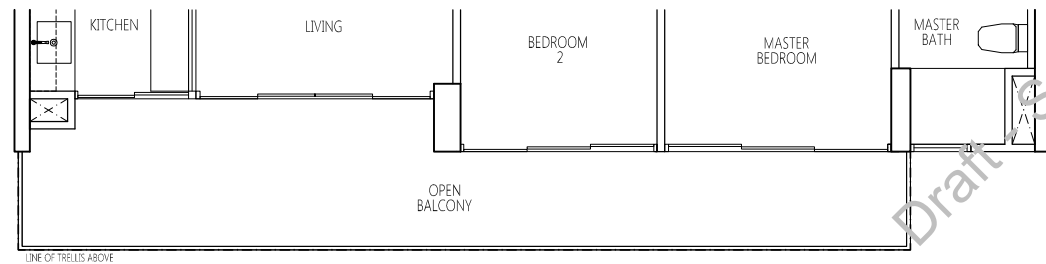
Q Bay - Type Ca (3-bedroom Verandah Home)



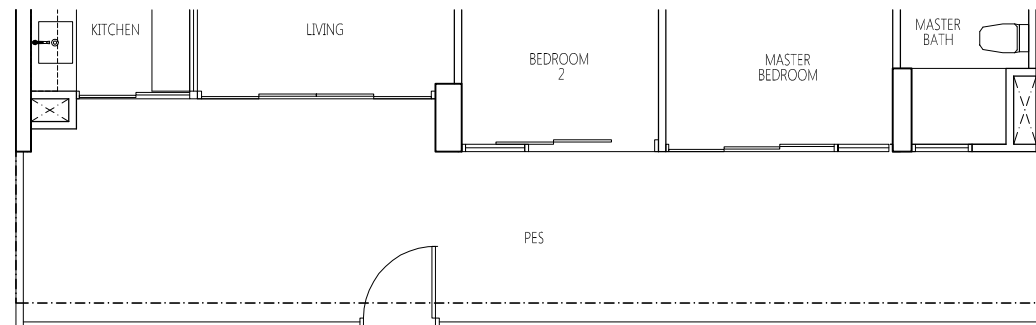
TYPE VH-Ca #03-18 TO #15-18
 3 - BEDROOM #03-22 TO #15-22 (mirror unit)
 103.00 sqm / 1108 sqft



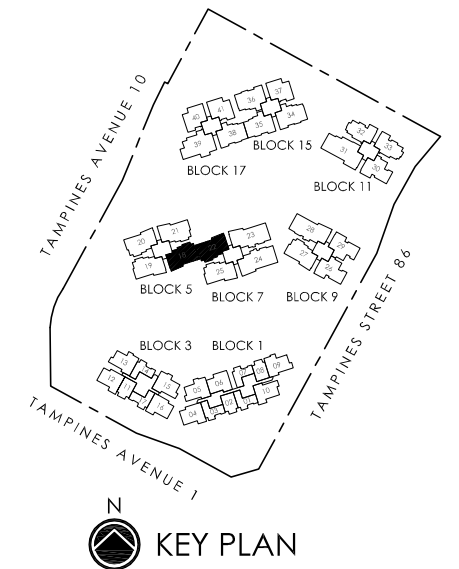
TYPE VH-Cap #02-22 (mirror unit)
 3 - BEDROOM
 129.00 sqm / 1388 sqft



TYPE VH-CaT #16-18
 3 - BEDROOM #16-22 (mirror unit)
 112.00 sqm / 1205 sqft



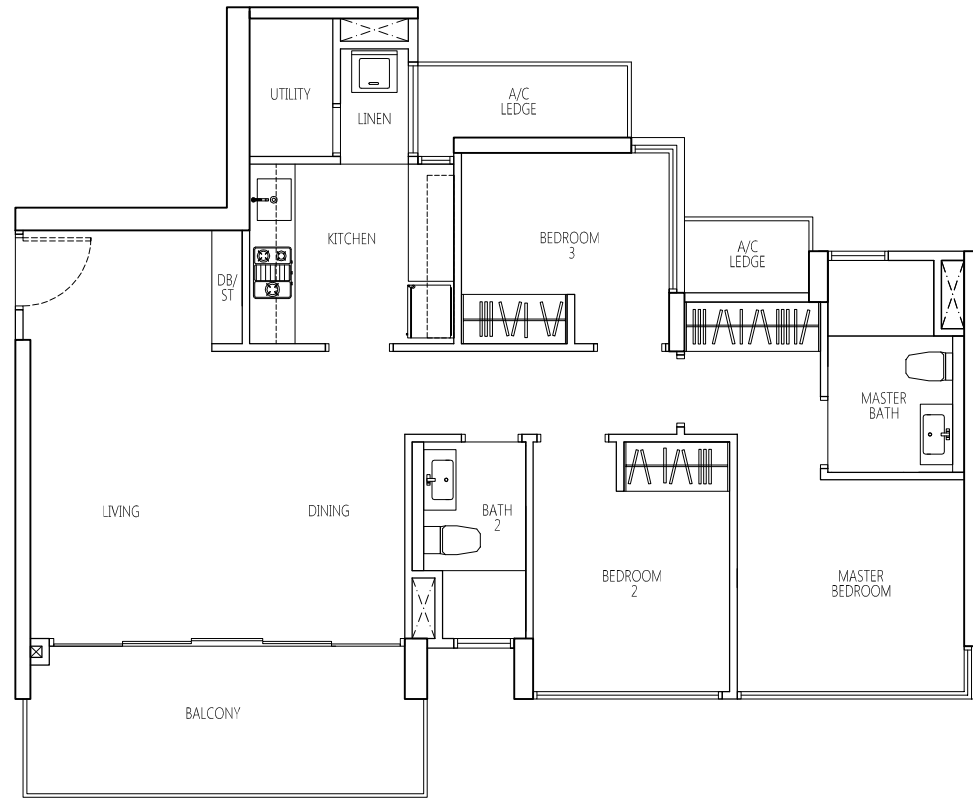
TYPE VH-Cap1 #02-18
 3 - BEDROOM
 129.00 sqm / 1388 sqft



KEY PLAN

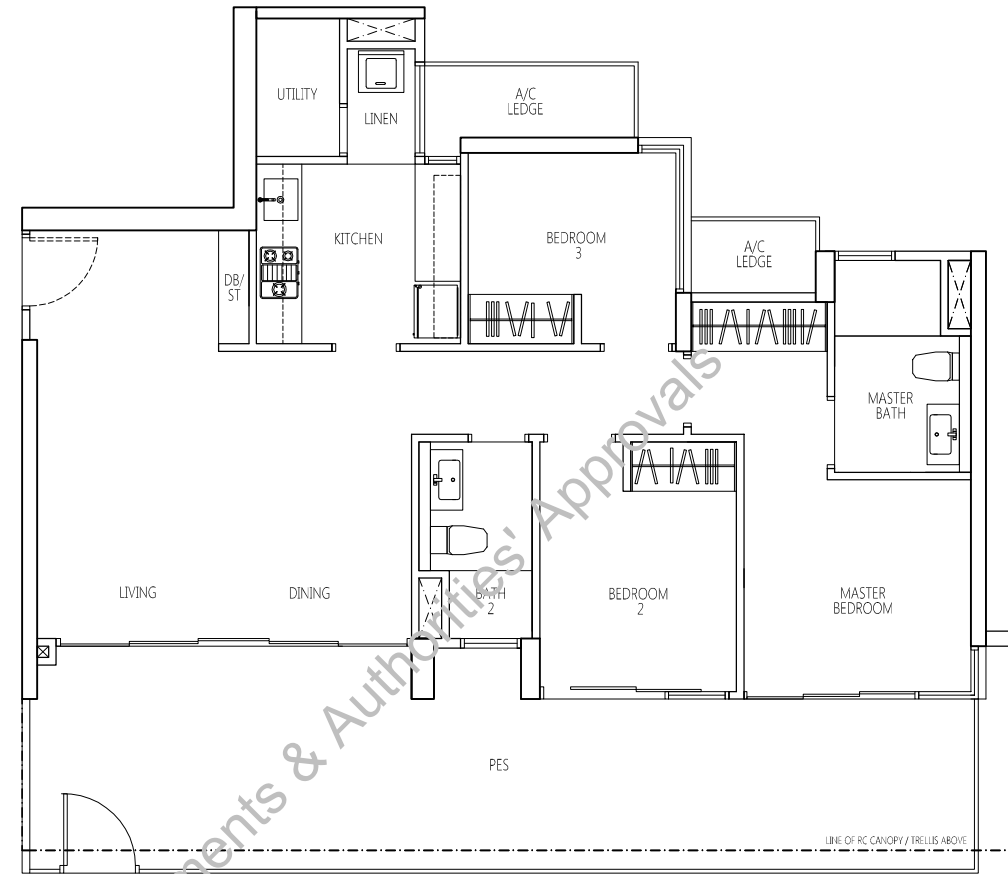


Q Bay - Type Cc1 (3-bedroom with utility)



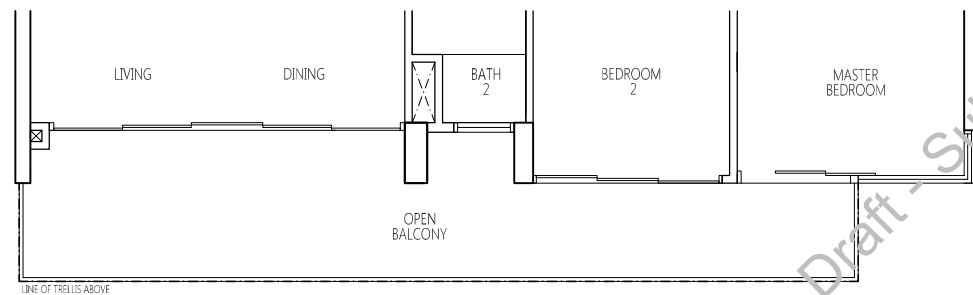
TYPE Cc1
3 - BEDROOM
96.00 sqm / 1033 sqft

#03-26 TO #15-26
#03-29 TO #15-29 (mirror unit)
#03-30 TO #15-30



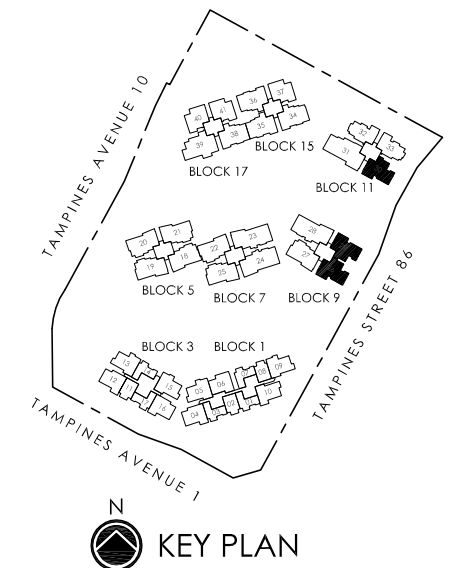
TYPE Cc1p
3 - BEDROOM
119.99 sqm / 1280 sqft

#02-26
#02-29 (mirror unit)
#02-30



TYPE Cc1T
3 - BEDROOM
103.00 sqm / 1108 sqft

#16-26
#16-29 (mirror unit)
#16-30

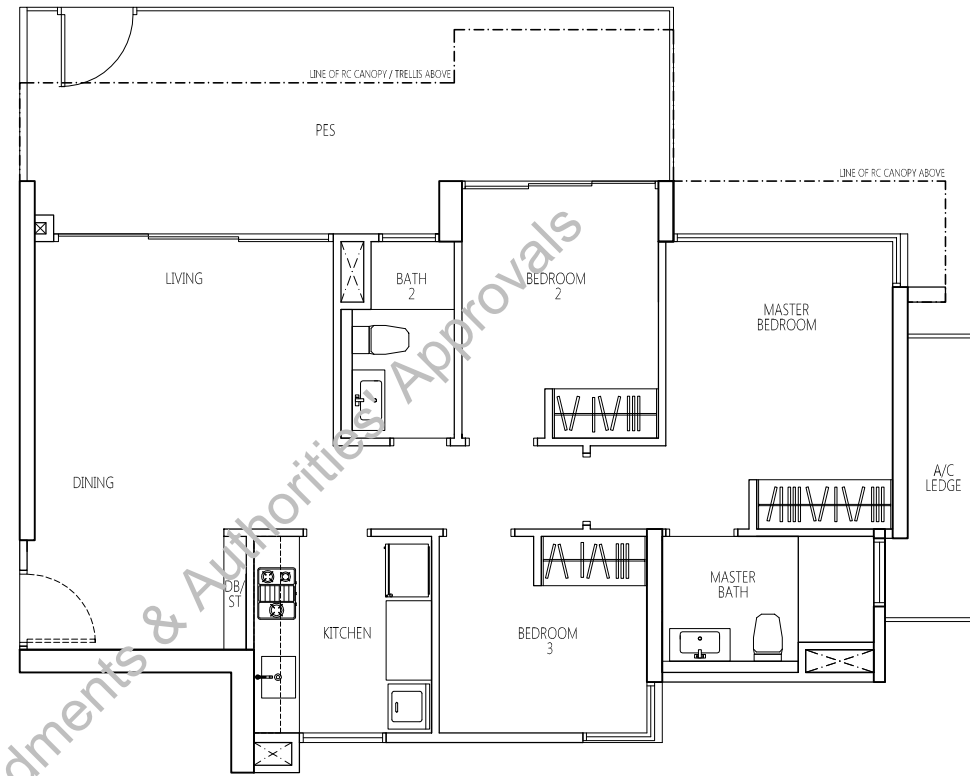


Q Bay - Type Cc2 (3-bedroom)



TYPE Cc2
3 - BEDROOM
84.00 sqm / 904 sqft

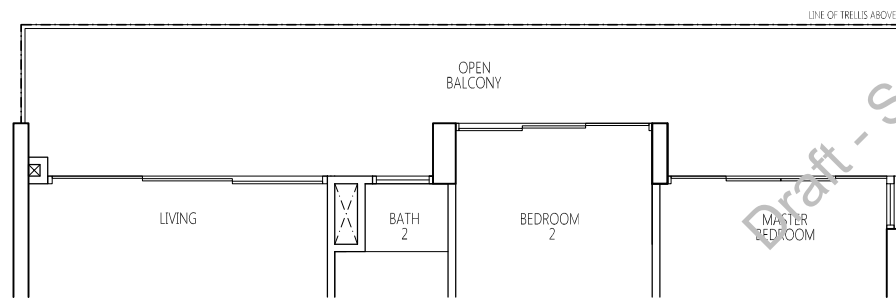
#02-32 TO #15-32 (mirror unit)
#02-33 TO #15-33



TYPE Cc2p
3 - BEDROOM
100.00 sqm / 1076 sqft

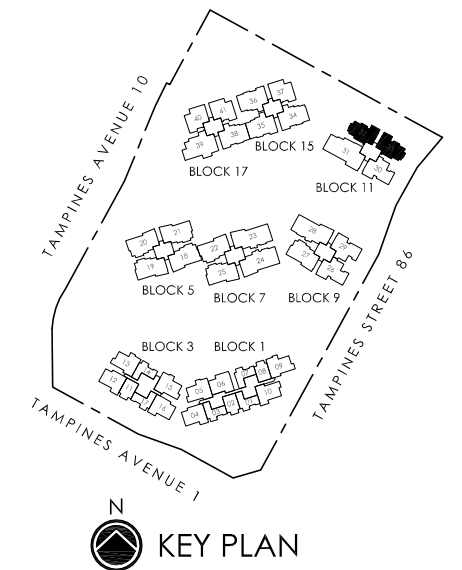
#01-32 (mirror unit)
#01-33

HIGH CEILING
HIGH CEILING



TYPE Cc2T
3 - BEDROOM
97.00 sqm / 1044 sqft

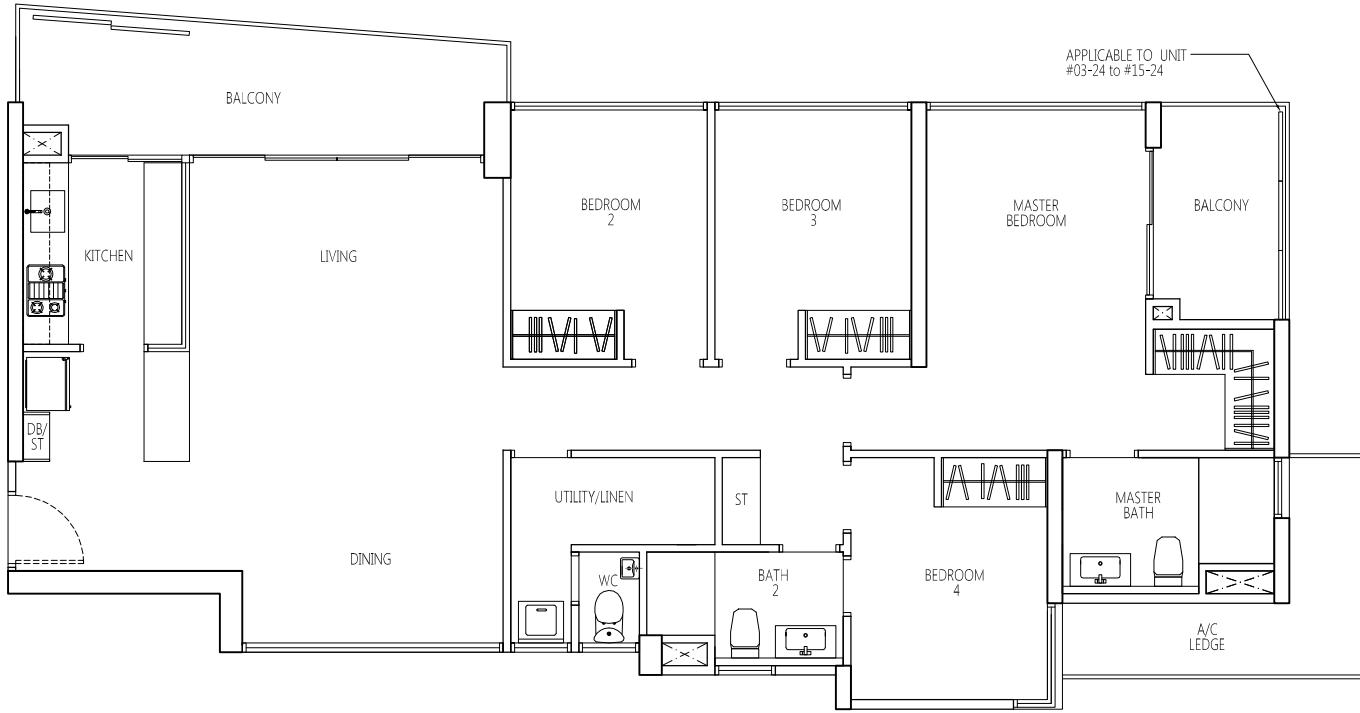
#16-32 (mirror unit)
#16-33



KEY PLAN

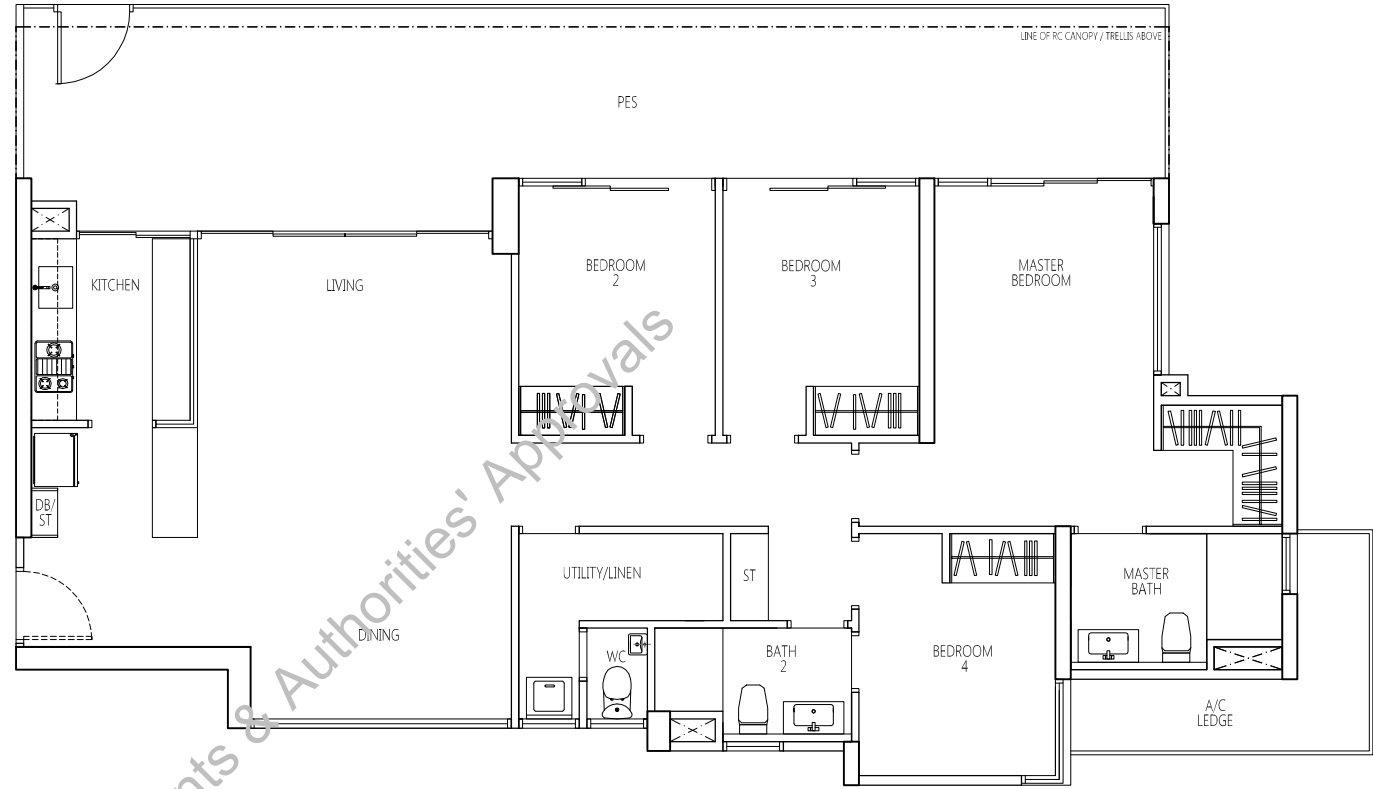


Q Bay - Type D (4-Bedroom Verandah Homes)



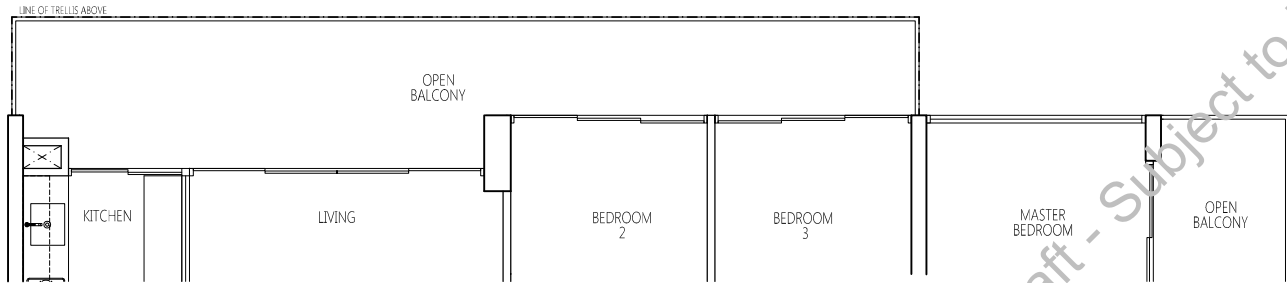
TYPE VH-D
4 - BEDROOM
130.00 sqm / 1399 sqft

#03-23 TO #15-23
#03-24 TO #15-24 (mirror unit)
#03-28 TO #15-28 (mirror unit)



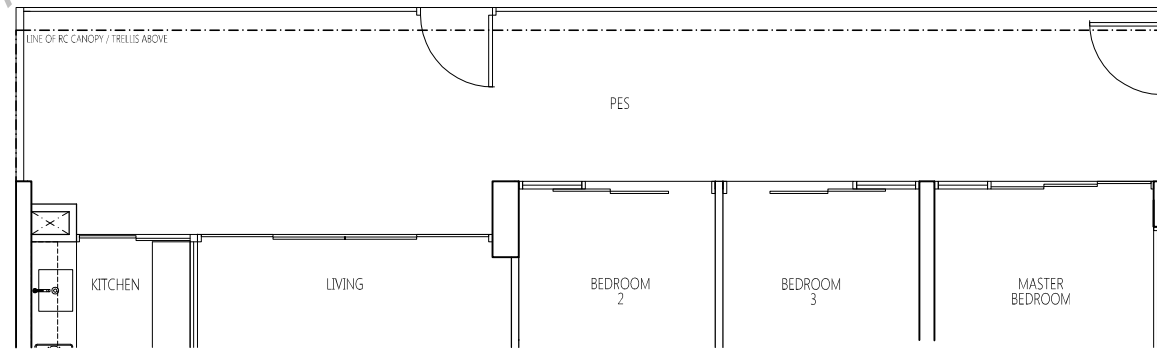
TYPE VH-Dp
4 - BEDROOM
154.00 sqm / 1657 sqft

#02-23
#02-28 (mirror unit)



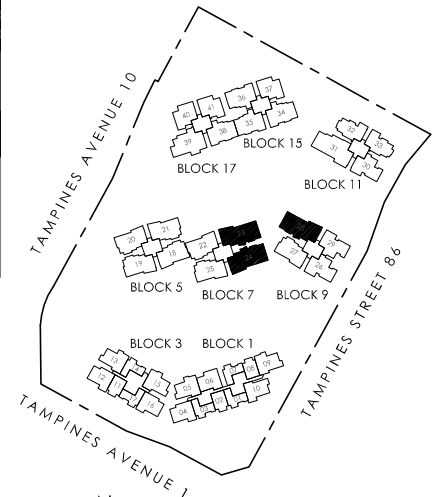
TYPE VH-DT
4 - BEDROOM
139.00 sqm / 1496 sqft

#16-23
#16-24 (mirror unit)
#16-28 (mirror unit)

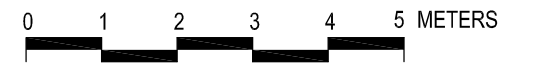


TYPE VH-Dp1
4 - BEDROOM
154.00 sqm / 1657 sqft

#02-24 (mirror unit)



N
KEY PLAN



Draft - Subject to Final Amendments & Authorities' Approvals

Q Bay - Type E (5-bedroom)



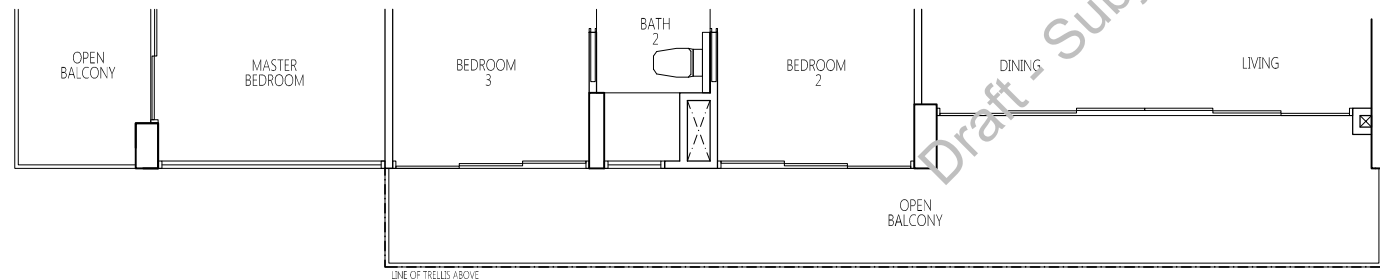
TYPE E
5 - BEDROOM
149.00 sqm / 1603 sqft

#03-31 TO #15-31



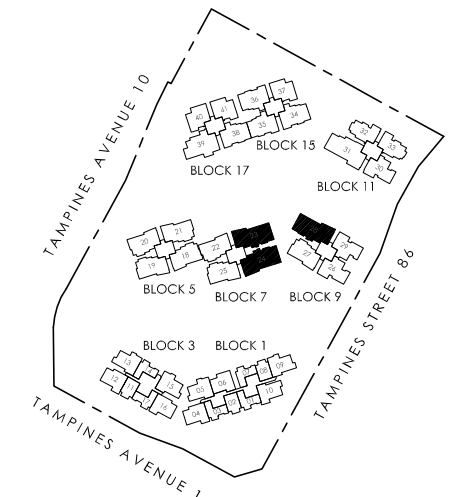
TYPE Ep
5 - BEDROOM
184.00 sqm / 1980 sqft

#02-31



TYPE ET
5 - BEDROOM
158.00 sqm / 1700 sqft

#16-31

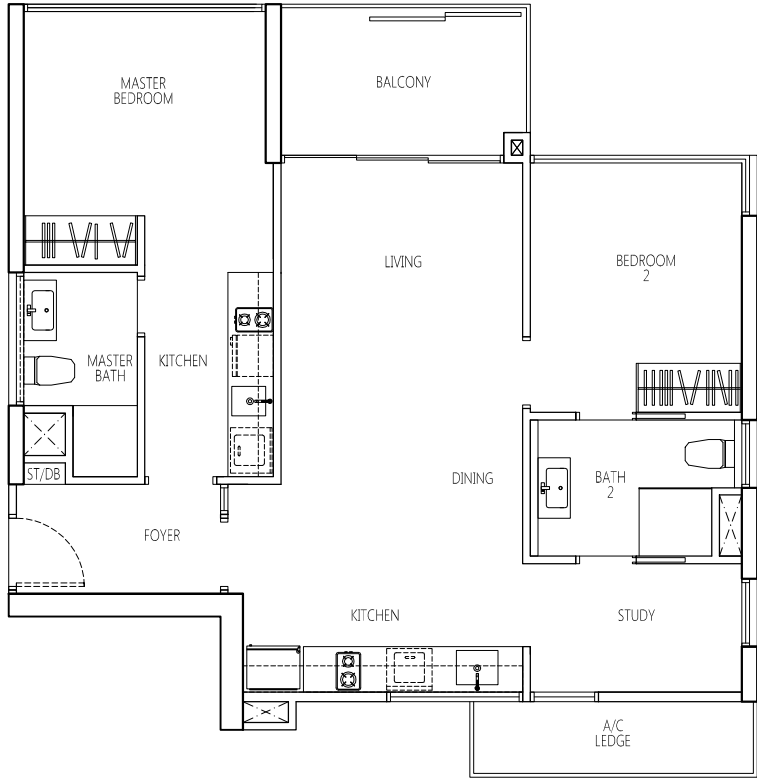


N
KEY PLAN

0 1 2 3 4 5 METERS

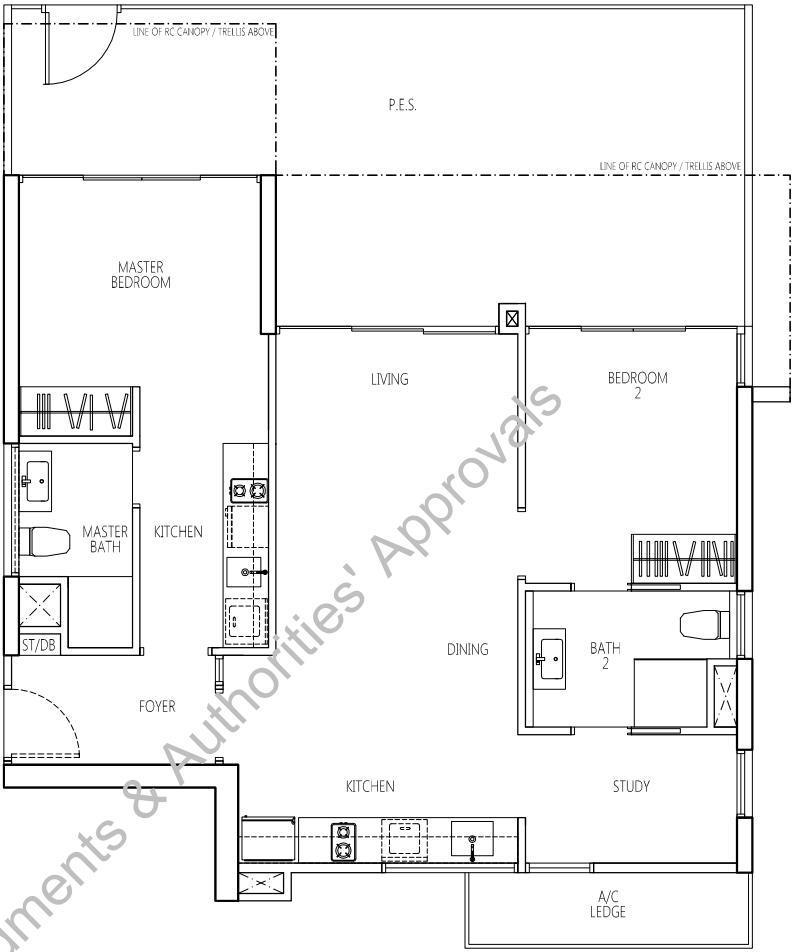
Draft - Subject to Final Amendments & Authorities' Approvals

Q Bay - Type TR-BS (2-bedroom + study TRIO Home*)



TYPE TR-BS
 2 - BEDROOM + STUDY
 82 sqm / 884 sqft

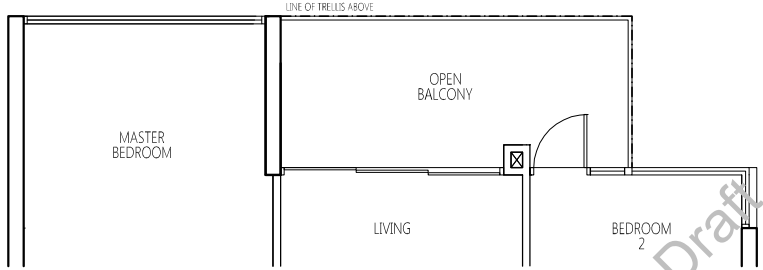
#02-37 TO #15-37
 #02-40 TO #15-40 (mirror unit)
 #02-41 TO #15-41



TYPE TR-BSp
 2 - BEDROOM + STUDY
 110.00 sqm / 1184 sqft

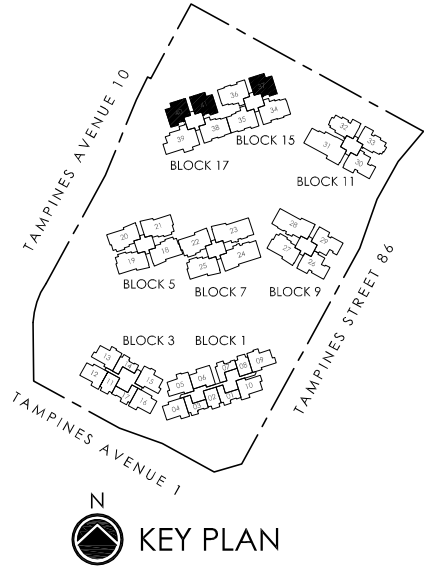
#01-37
 #01-40 (mirror unit)
 #01-41

HIGH CEILING
HIGH CEILING
HIGH CEILING



TYPE TR-BST
 2 - BEDROOM + STUDY
 85.00 sqm / 915 sqft

#16-37
 #16-40 (mirror unit)
 #16-41



KEY PLAN



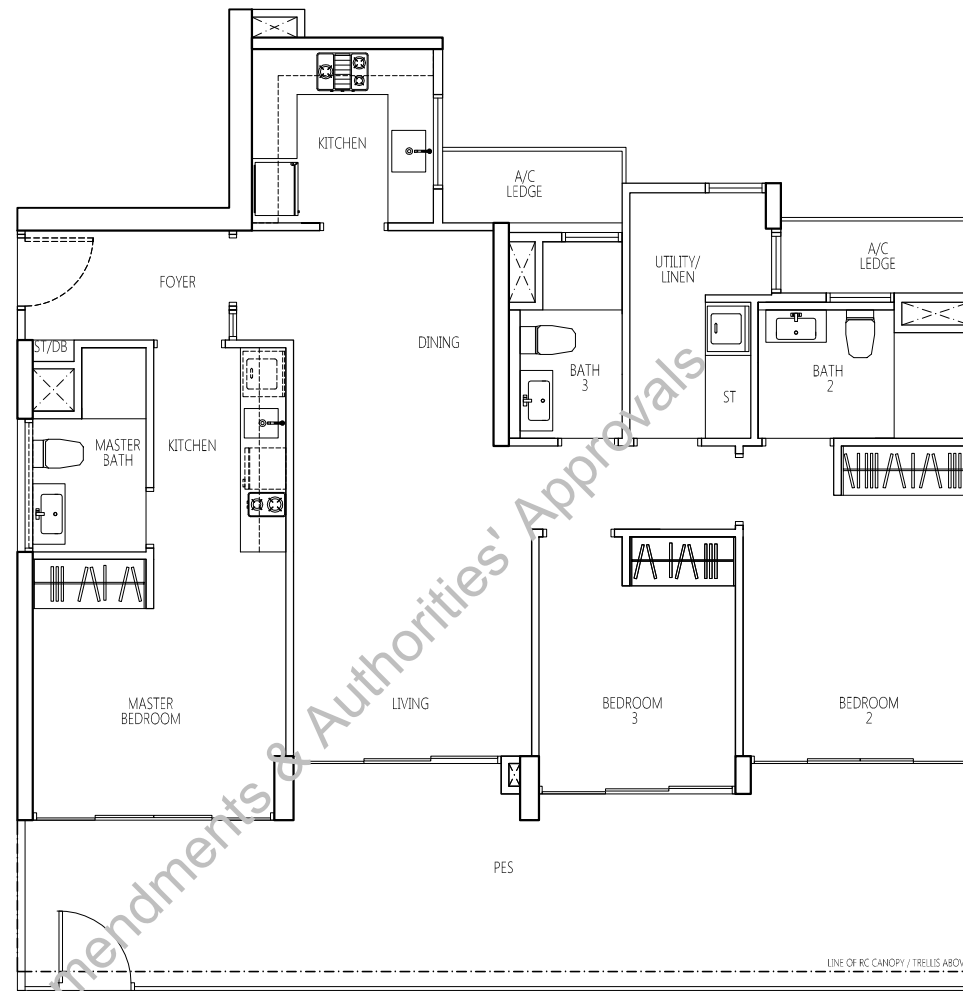
* TRIO Home = Dual Key

Q Bay - Type TR-C (3-bedroom TRIO Home*)



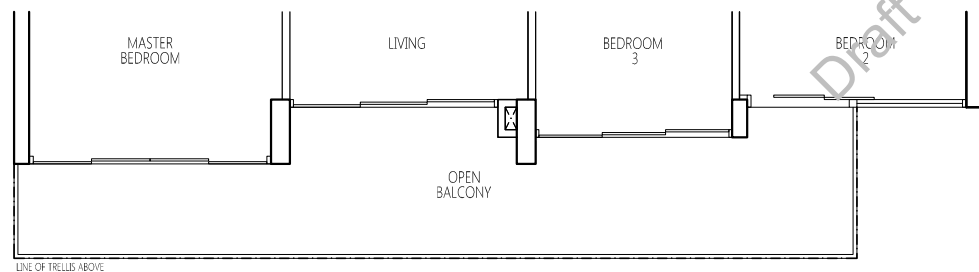
TYPE TR-C
3 - BEDROOM
108.00 sqm / 1162 sqft

#03-34 TO #15-34
#03-35 TO #15-35 (mirror unit)
#02-36 TO #15-36
#03-38 TO #15-38



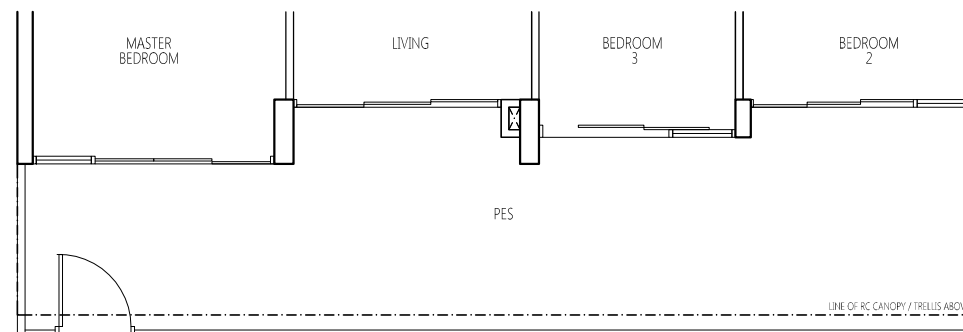
TYPE TR-Cp
3 - BEDROOM
136.00 sqm / 1463 sqft

#01-36 **HIGH CEILING**



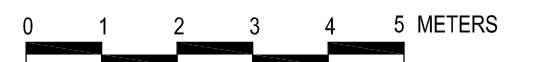
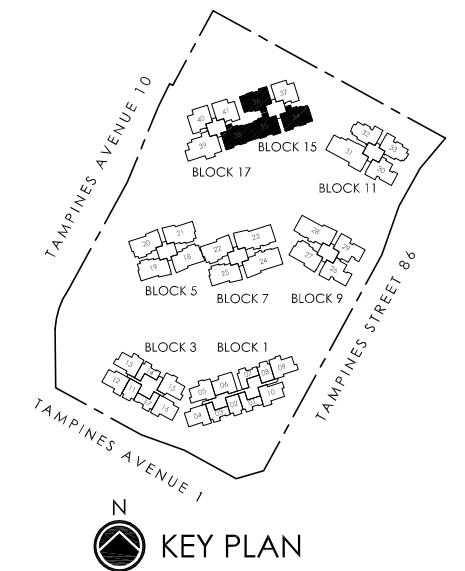
TYPE TR-CT
3 - BEDROOM
120.00 sqm / 1291 sqft

#16-34
#16-35 (mirror unit)
#16-36
#16-38



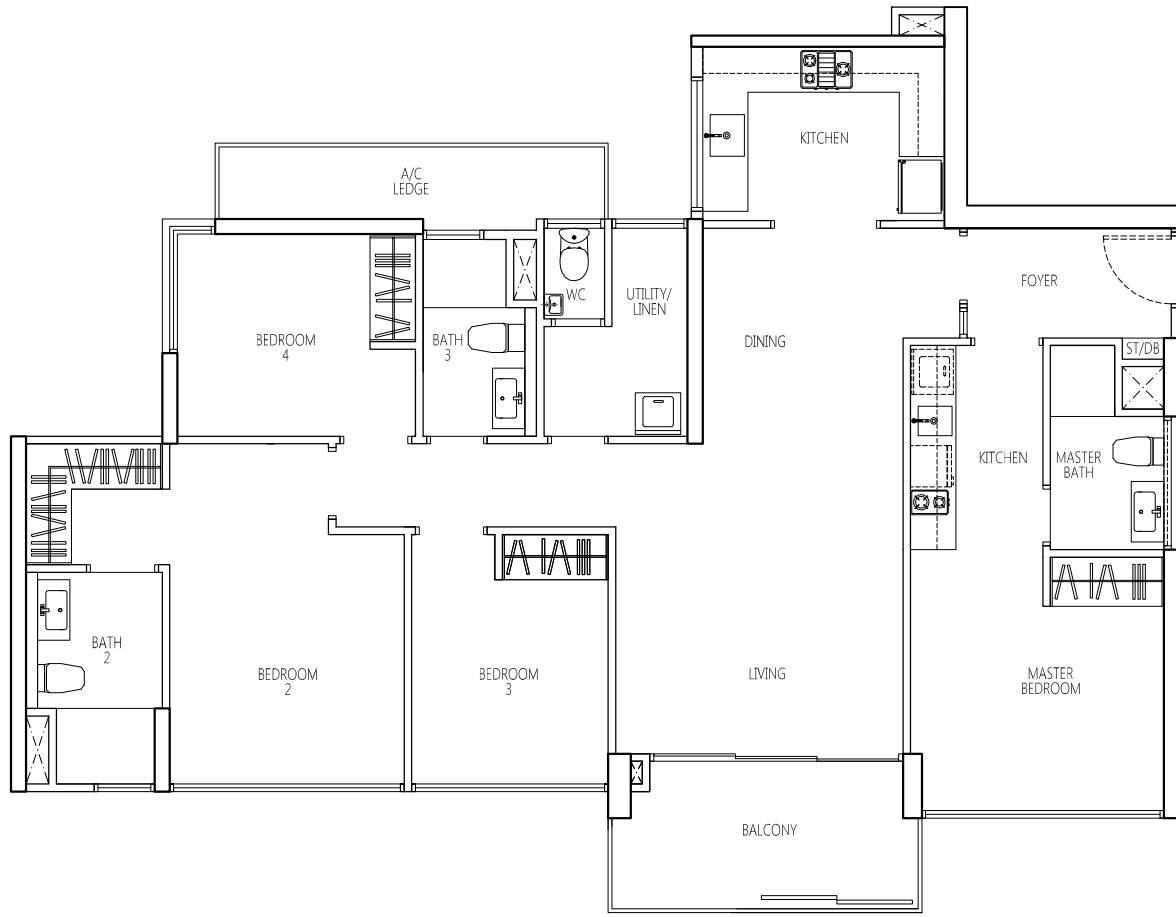
TYPE TR-Cp1
3 - BEDROOM
136.00 sqm / 1463 sqft

#02-34
#02-35 (mirror unit)
#02-38

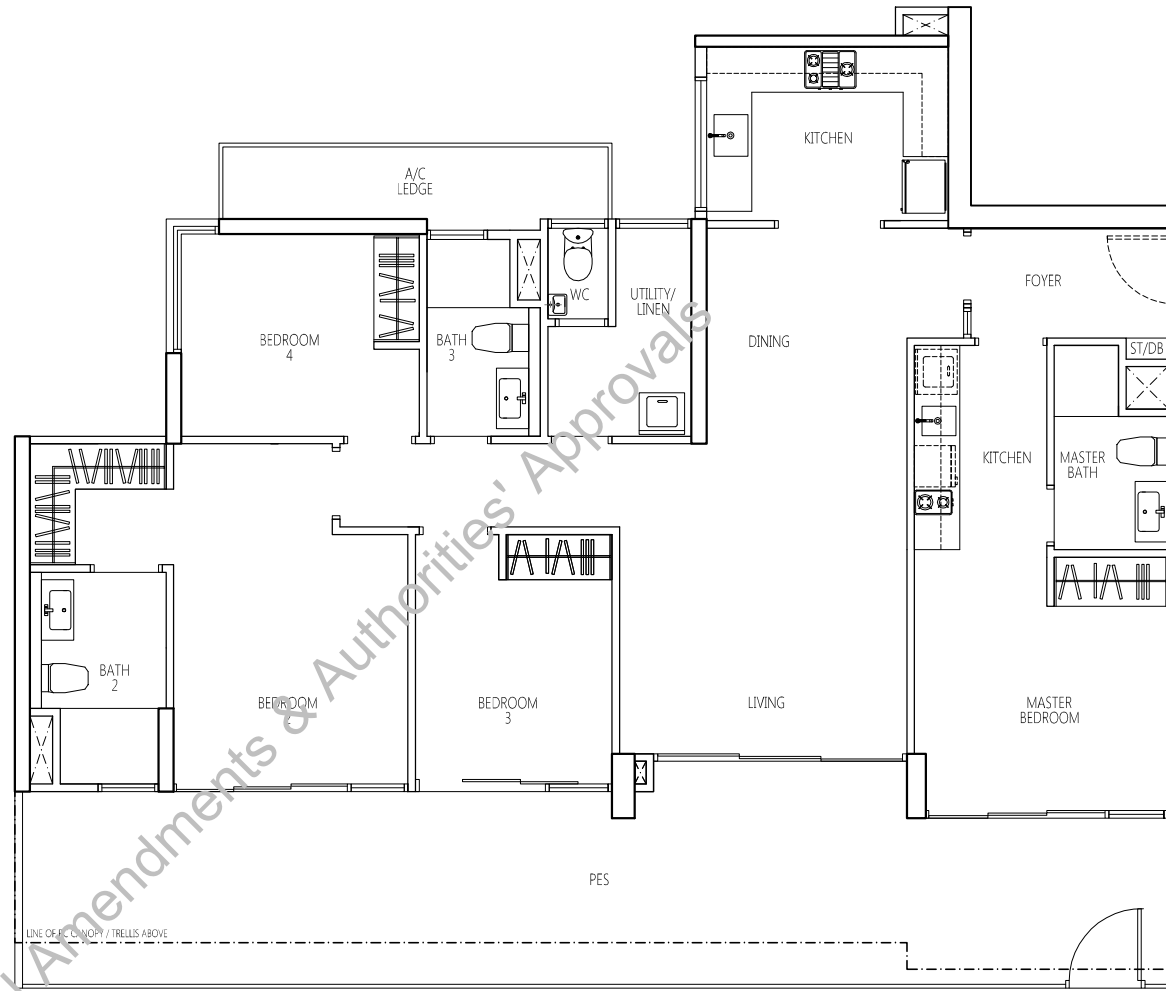


*** TRIO Home = Dual Key**

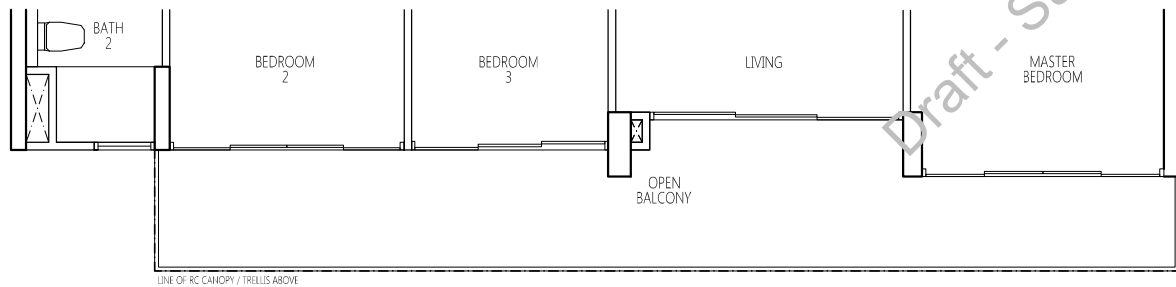
Q Bay - Type TR-D (4-bedroom TRIO Home*)



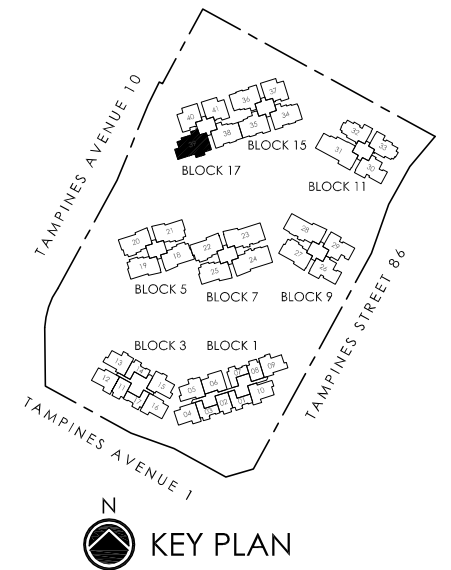
TYPE TR-D #03-39 TO #15-39
 4 - BEDROOM
 128.00 sqm / 1377 sqft



TYPE TR-Dp #02-39
 4 - BEDROOM
 161.00 sqm / 1732 sqft



TYPE TR-DT #16-39
 4 - BEDROOM
 142.00 sqm / 1528 sqft



*** TRIO Home = Dual Key)**