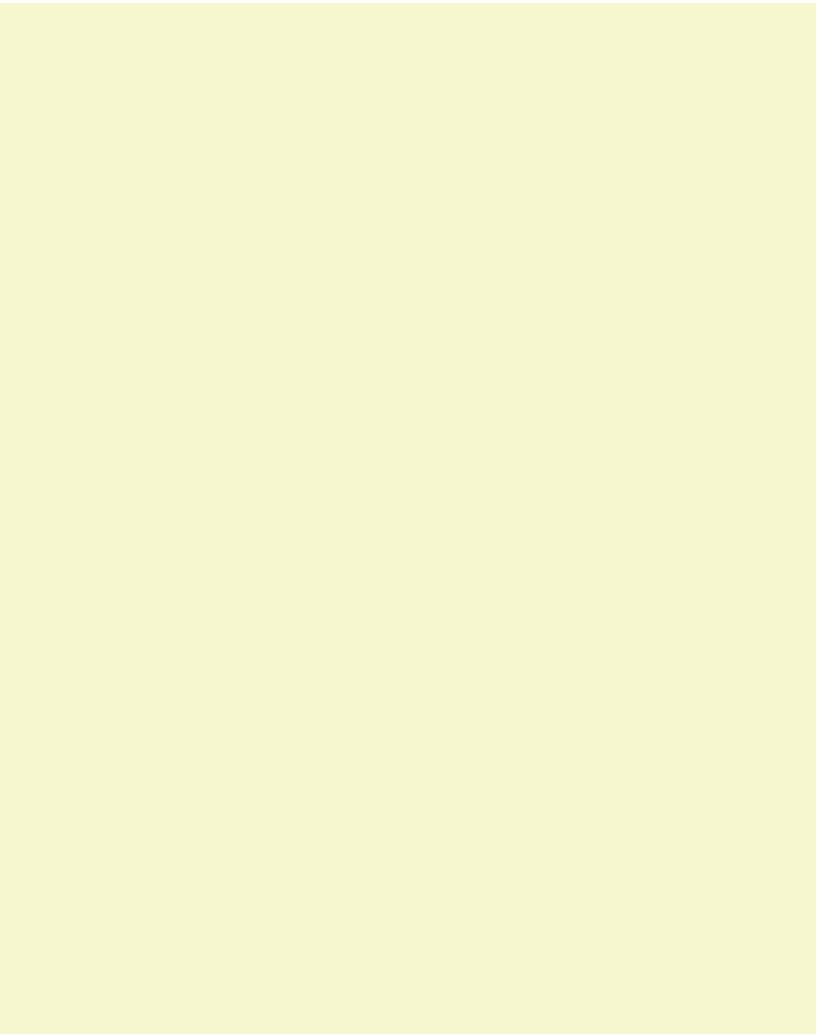


The background is a solid light yellow color. Overlaid on this is a large, faint, light green floral pattern consisting of various branches with leaves and clusters of small flowers, resembling cherry blossoms. The pattern is most dense in the corners and fades towards the center.

GOODWOOD

— G R A N D —

FLOOR PLANS



SIMPLY SURREAL

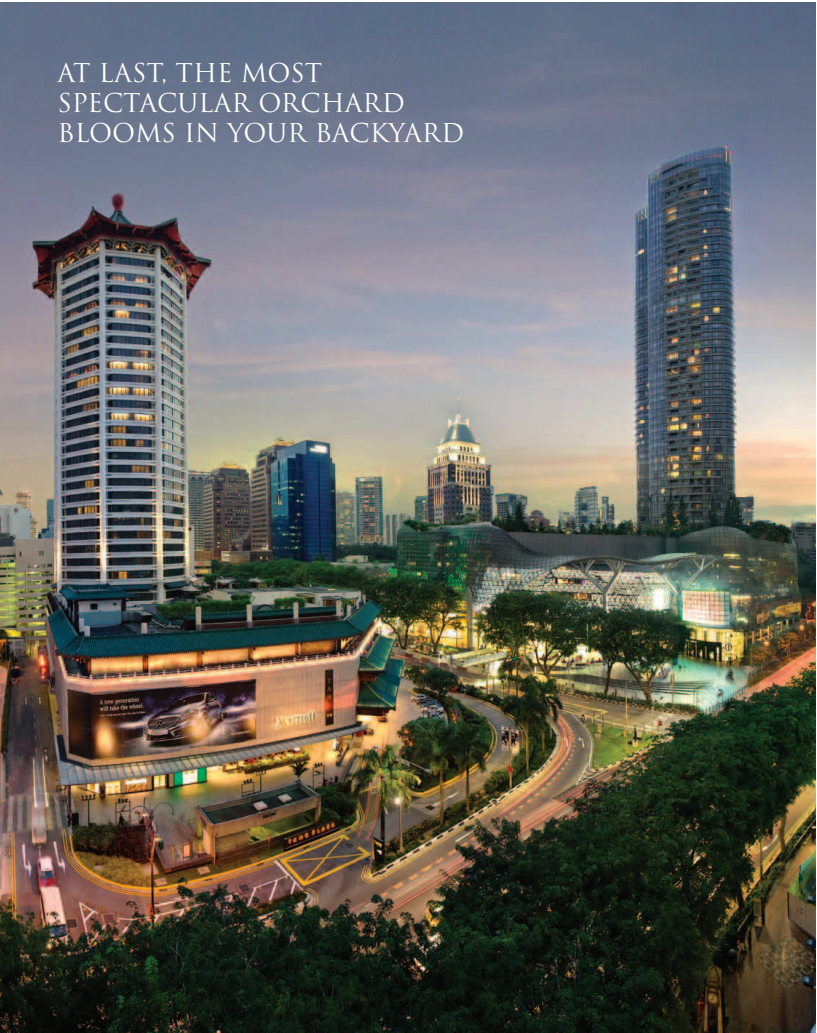
Savour the quiet that echoes throughout the lush landscapes and pristine surroundings. Unwind in privacy within the desirable Tower residences or magnificent Strata Bungalows. Or simply revel in the bright lights of the big city. At **GOODWOOD GRILLE**, you'll discover a verdant yet vibrant enclave in the heart of town; the city's garden residence that's yours to own.



NATURALLY STUNNING

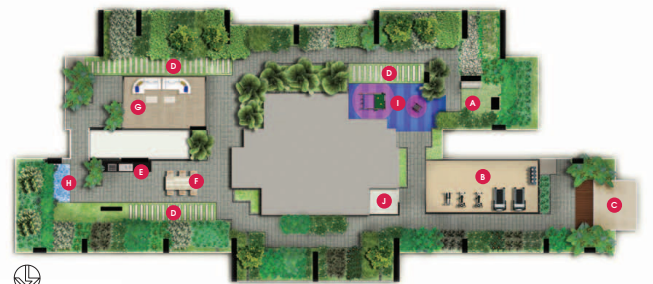
Towering over the surrounding foliage, the Tower features a seamless integration of clean lines and vertical elements, extending from ground to sky. Together with a beautiful lush sky terrace, the Tower showcases architecture inspired by nature and its green habitat. The eight Strata Bungalows lend an extra touch of prestige and splendour to **GOODWOOD GRAB**.

AT LAST, THE MOST
SPECTACULAR ORCHARD
BLOOMS IN YOUR BACKYARD



SITE PLAN

- | | | | |
|----------------------|------------------|---------------------------|------------------------|
| A. Main Entrance | D. Green Trellis | G. Children's Splash Pool | J. Tranquil Garden |
| B. Arrival Courtyard | E. Grand Walkway | H. Sun Deck | K. Reflective Pond |
| C. Guardhouse | F. Play Lawn | I. Infinity Lap Pool | L. Verdant Garden Walk |



SKY TERRACE PLAN (10TH STOREY)

- | | | | |
|------------------------|--------------------|-------------------------|--------------------|
| A. Meditation Corner | D. Stepping Lawn | G. Grand Clubhouse | J. Handicap Toilet |
| B. Indoor Gymnasium | E. BBQ Patio | H. Waterscape | |
| C. Observation Veranda | F. Alfresco Dining | I. Children's Play Zone | |

UNIT DISTRIBUTION

Tower Block
16 Balmoral Road

| Level | Unit | 1 | 2 | 3 | 4 | 5 | 6 | 7 |
|-------|------|------------------|-----|------------------|-------|------------------|--------|-------|
| Roof | | 3PH(R) #12-01 | | 3PH(R) #12-02 | | 4PH(R) #12-03 | | |
| 12 | | 3PH #11-01 | | 3PH #11-02 | | 4PH #11-03 | | |
| 11 | | Sky Terrace | | | | | | |
| 10 | | Sky Terrace | | | | | | |
| 9 | | C1 | BS1 | BS1 | C1 | C2 | BS2 | C2 |
| 8 | | C1 | BS1 | BS1 | C1 | C2 | BS2 | C2 |
| 7 | | C1 | BS1 | BS1 | C1 | C2 | BS2 | C2 |
| 6 | | C1 | BS1 | BS1 | C1 | C2 | BS2 | C2 |
| 5 | | C1 | BS1 | BS1 | C1 | C2 | BS2 | C2 |
| 4 | | C1 | BS1 | BS1 | C1 | C2 | BS2 | C2 |
| 3 | | C1 | BS1 | BS1 | C1 | C2 | BS2 | C2 |
| 2 | | C1 | | | C1 | C2 | BS2 | C2 |
| 1 | | C1(P) | | | C1(P) | C2(P) | BS2(P) | C2(P) |

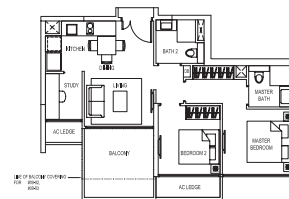
Strata Bungalows
18, 20, 22, 24, 26, 28, 30 & 32 Balmoral Road

| House No. | Type |
|-----------|------|
| 18 | D2 |
| 20 | D1 |
| 22 | D1 |
| 24 | D3 |
| 26 | D4 |
| 28 | D1 |
| 30 | D1 |
| 32 | D5 |

- BS1 2-bedroom + Study
 - BS2 2-bedroom + Study
 - C1 3-bedroom
 - C2 3-bedroom + Utility
 - 3PH 3-bedroom Penthouse
 - 4PH 4-bedroom Penthouse
 - D Strata Bungalows
- (P) - PES | (R) - Roof

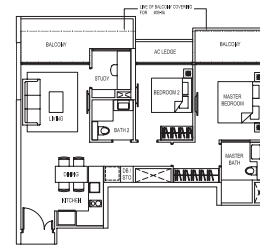
2-BEDROOM+STUDY

TYPE:BS1



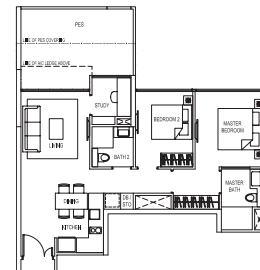
Area: 72 sqm / 775 sqft
Unit:
#03-03, #04-03, #05-03, #06-03,
#07-03, #08-03, #09-03
Minor Image Unit:
#03-02, #04-02, #05-02, #06-02,
#07-02, #08-02, #09-02

TYPE:BS2



Area: 83 sqm / 893 sqft
Unit:
#02-06, #03-06, #04-06, #05-06,
#06-06, #07-06, #08-06, #09-06

TYPE:BS2(P)



Area: 83 sqm / 893 sqft
Unit: #01-06

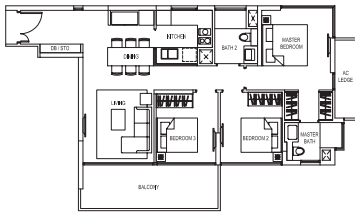
Note: The plans are subject to change as may be required or approved by the relevant authorities. These are not drawn to scale and are for the purpose of visual presentation of the different layouts that are available. Areas are estimates only and are subject to final survey.



3-BEDROOM

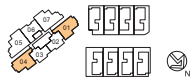
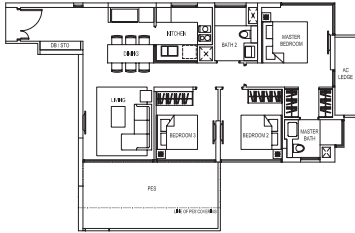
TYPE:C1

Area: 97 sqm / 1044 sqft
 Unit: #02-01, #03-01, #04-01, #05-01, #06-01, #07-01, #08-01, #09-01
 Mirror Image Unit: #02-04, #03-04, #04-04, #05-04, #06-04, #07-04, #08-04, #09-04



TYPE:C1(P)

Area: 103 sqm / 1109 sqft
 Unit: #01-01
 Mirror Image: #01-04

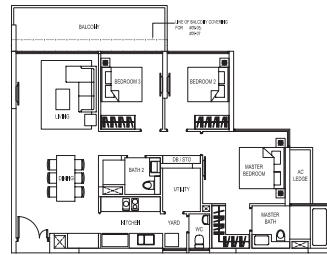


Note: The plans are subject to change as may be required or approved by the relevant authorities. These are not drawn to scale and are for the purpose of visual presentation of the different layouts that are available. Areas are estimates only and are subject to final survey.

3-BEDROOM+UTILITY

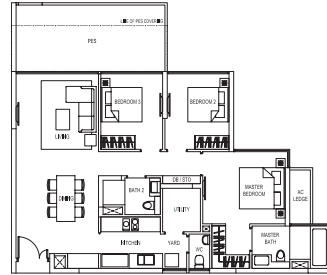
TYPE:C2

Area: 114 sqm / 1227 sqft
 Unit: #02-07, #03-07, #04-07, #05-07, #06-07, #07-07, #08-07, #09-07
 Mirror Image Unit: #02-05, #03-05, #04-05, #05-05, #06-05, #07-05, #08-05, #09-05



TYPE:C2(P)

Area: 121 sqm / 1302 sqft
 Unit: #01-07
 Mirror Image: #01-05

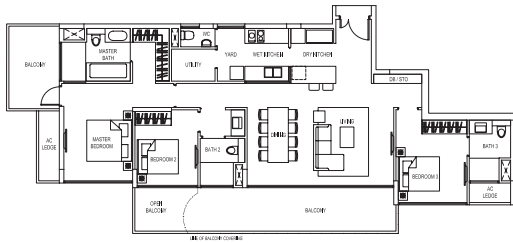


Note: The plans are subject to change as may be required or approved by the relevant authorities. These are not drawn to scale and are for the purpose of visual presentation of the different layouts that are available. Areas are estimates only and are subject to final survey.

3-BEDROOM PH

TYPE:3PH

Area: 156 sqm / 1679 sqft
 Unit: #11-02
 Mirror Image Unit: #11-01

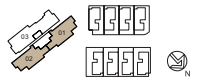
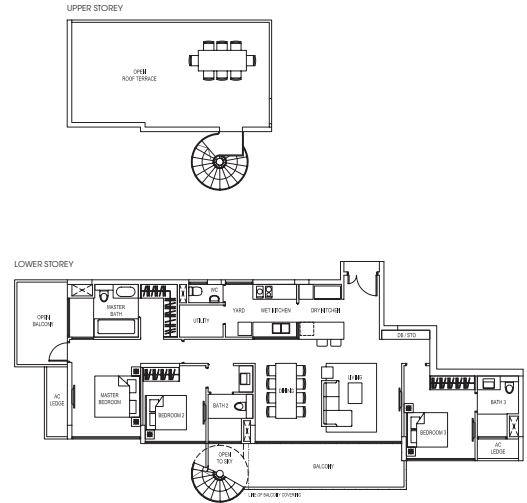


Note: The plans are subject to change as may be required or approved by the relevant authorities. These are not drawn to scale and are for the purpose of visual presentation of the different layouts that are available. Areas are estimates only and are subject to final survey.

3-BEDROOM PH(R)

TYPE:3PH(R)

Area: 199 sqm / 2142 sqft
 Unit: #12-02
 Mirror Image Unit: #12-01

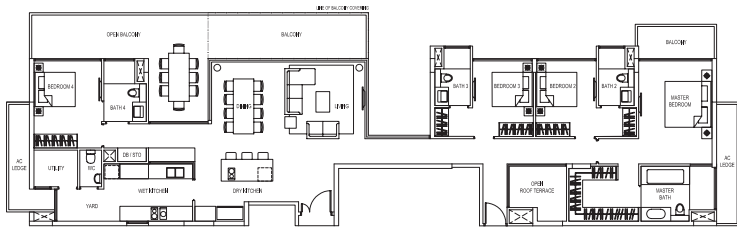


Note: The plans are subject to change as may be required or approved by the relevant authorities. These are not drawn to scale and are for the purpose of visual presentation of the different layouts that are available. Areas are estimates only and are subject to final survey.

4-BEDROOM PH

TYPE:4PH

Area: 231 sqm / 2486 sqft
Unit: #11-03

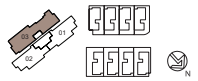
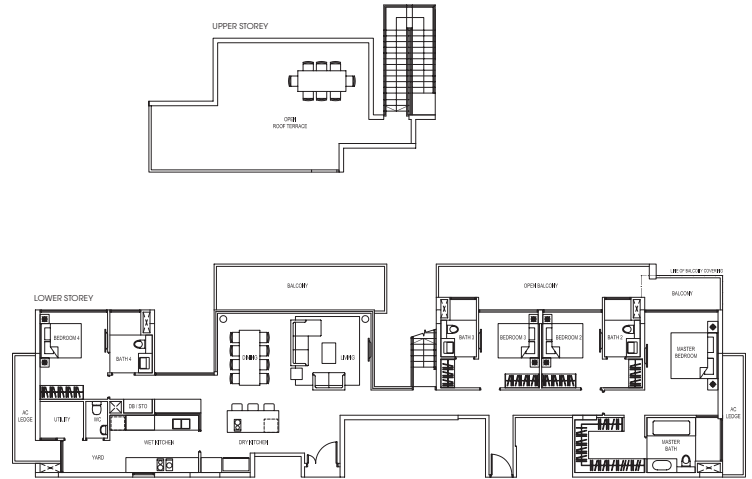


Note: The plans are subject to change as may be required or approved by the relevant authorities. These are not drawn to scale and are for the purpose of visual presentation of the different layouts that are available. Areas are estimates only and are subject to final survey.

4-BEDROOM PH(R)

TYPE:4PH(R)

Area: 289 sqm / 3111 sqft
Unit: #12-03

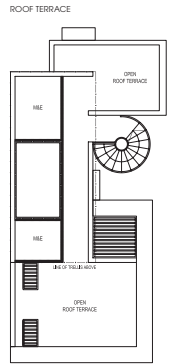
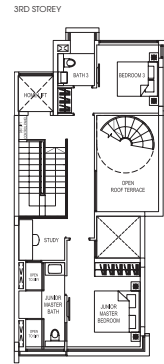
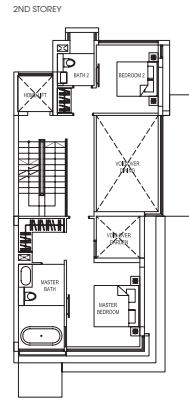
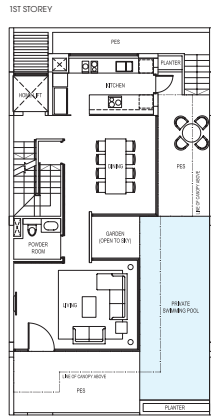
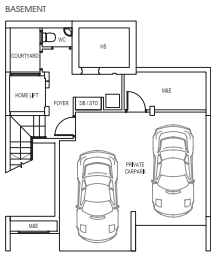


Note: The plans are subject to change as may be required or approved by the relevant authorities. These are not drawn to scale and are for the purpose of visual presentation of the different layouts that are available. Areas are estimates only and are subject to final survey.

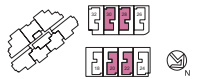
STRATA BUNGALOWS

TYPE:D1

Area: 456 sqm / 5231 sqft
 House No. 28, 30
 Mirror image house no. 20, 22



Note: The plans are subject to change as may be required or approved by the relevant authorities. These are not drawn to scale and are for the purpose of visual presentation of the different layouts that are available. Areas are estimates only and are subject to final survey.

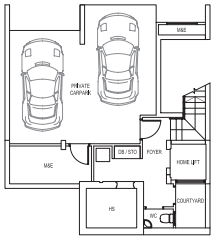


STRATA BUNGALOWS

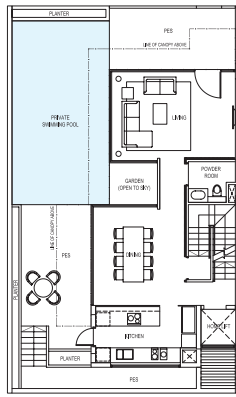
TYPE:D2

Area: 509 sqm / 5479 sqft
House No. 18

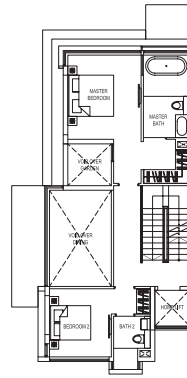
BASEMENT



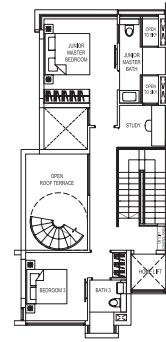
1ST STOREY



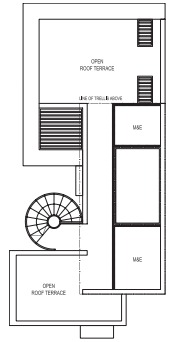
2ND STOREY



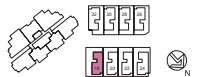
3RD STOREY



ROOF TERRACE



Note: The plans are subject to change as may be required or approved by the relevant authorities. These are not drawn to scale and are for the purpose of visual presentation of the different layouts that are available. Areas are estimates only and are subject to final survey.

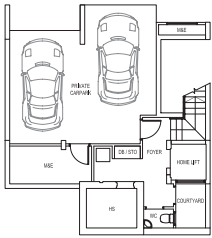


STRATA BUNGALOWS

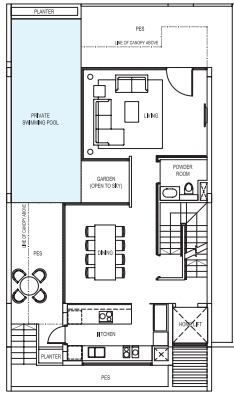
TYPE:D3

Area: 502 sqm / 5404 sqft
House No. 24

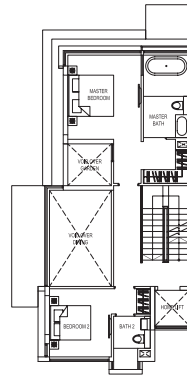
BASEMENT



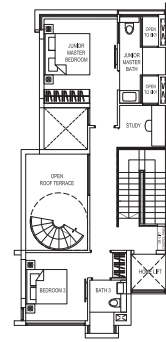
1ST STOREY



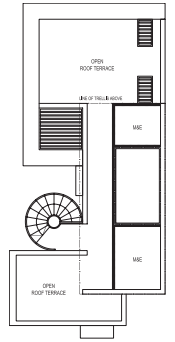
2ND STOREY



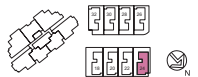
3RD STOREY



ROOF TERRACE



Note: The plans are subject to change as may be required or approved by the relevant authorities. These are not drawn to scale and are for the purpose of visual presentation of the different layouts that are available. Areas are estimates only and are subject to final survey.

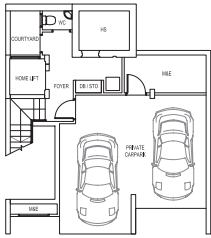


STRATA BUNGALOWS

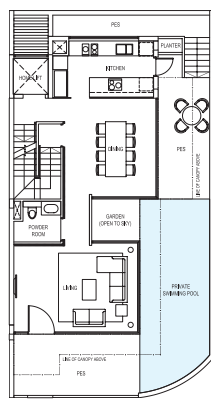
TYPE:D4

Area: 487 sqm / 5242 sqft
House No. 26

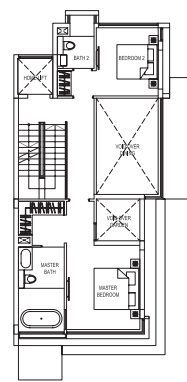
BASEMENT



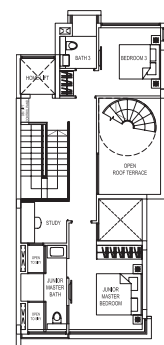
1ST STOREY



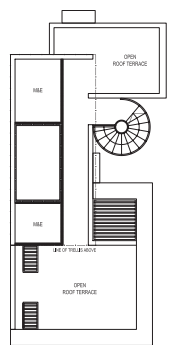
2ND STOREY



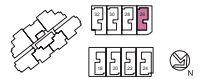
3RD STOREY



ROOF TERRACE



Note: The plans are subject to change as may be required or approved by the relevant authorities. These are not drawn to scale and are for the purpose of visual presentation of the different layouts that are available. Areas are estimates only and are subject to final survey.

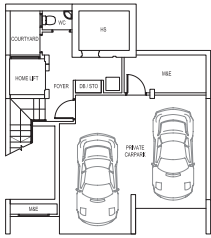


STRATA BUNGALOWS

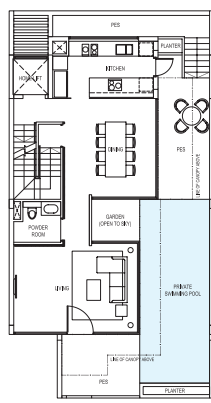
TYPE:D5

Area: 480 sqm / 5167 sqft
House No. 32

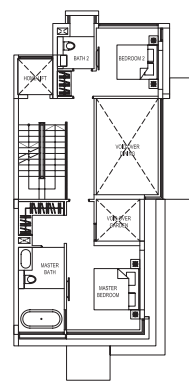
BASEMENT



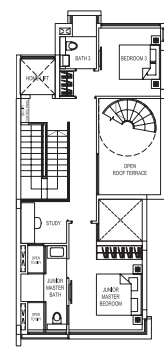
1ST STOREY



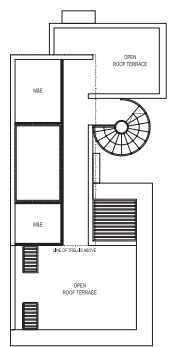
2ND STOREY



3RD STOREY



ROOF TERRACE



Note: The plans are subject to change as may be required or approved by the relevant authorities. These are not drawn to scale and are for the purpose of visual presentation of the different layouts that are available. Areas are estimates only and are subject to final survey.

