



www.nutritionsgroup.com

GOODWOOD
— G R A N D —

www.huttonsgroup.com

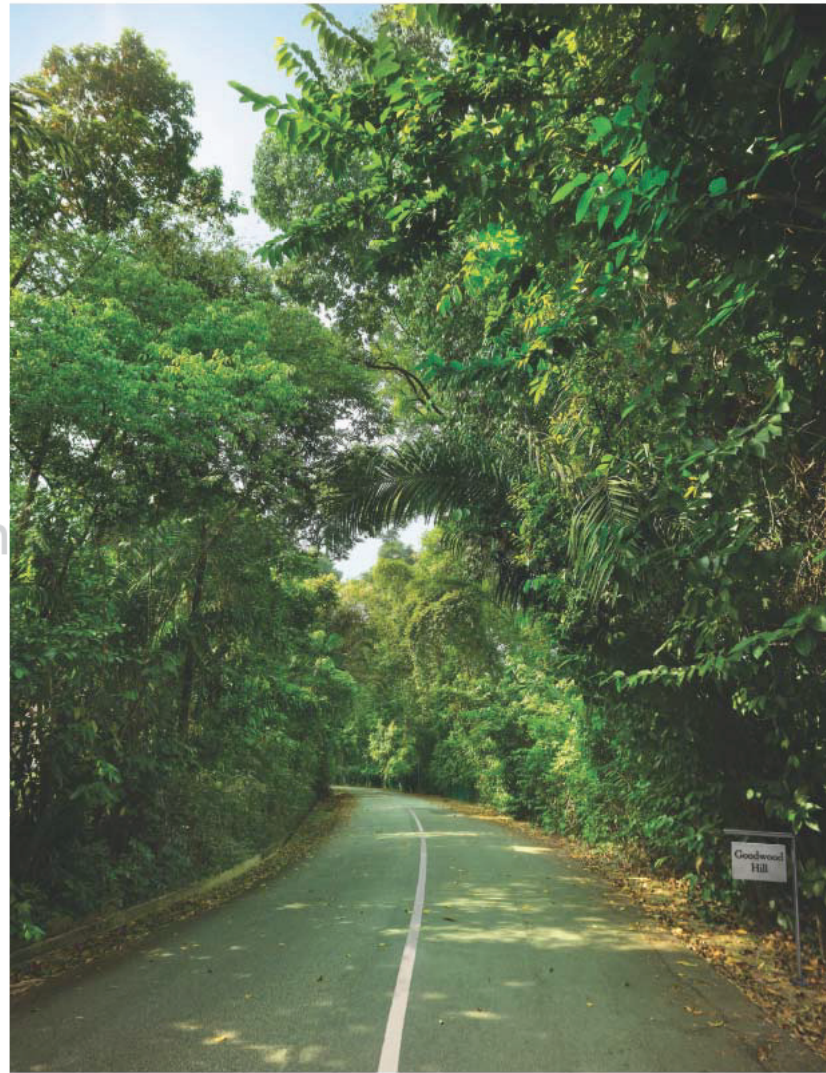


SIMPLY SURREAL

Savour the quiet that echoes throughout the lush landscapes and pristine surroundings. Unwind in privacy within the desirable tower residences or magnificent Strata Bungalows. Or simply revel in the bright lights of the big city. At **GOODWOOD CLAND**, you'll discover a verdant yet vibrant enclave in the heart of town; the city's garden residence that's yours to own.

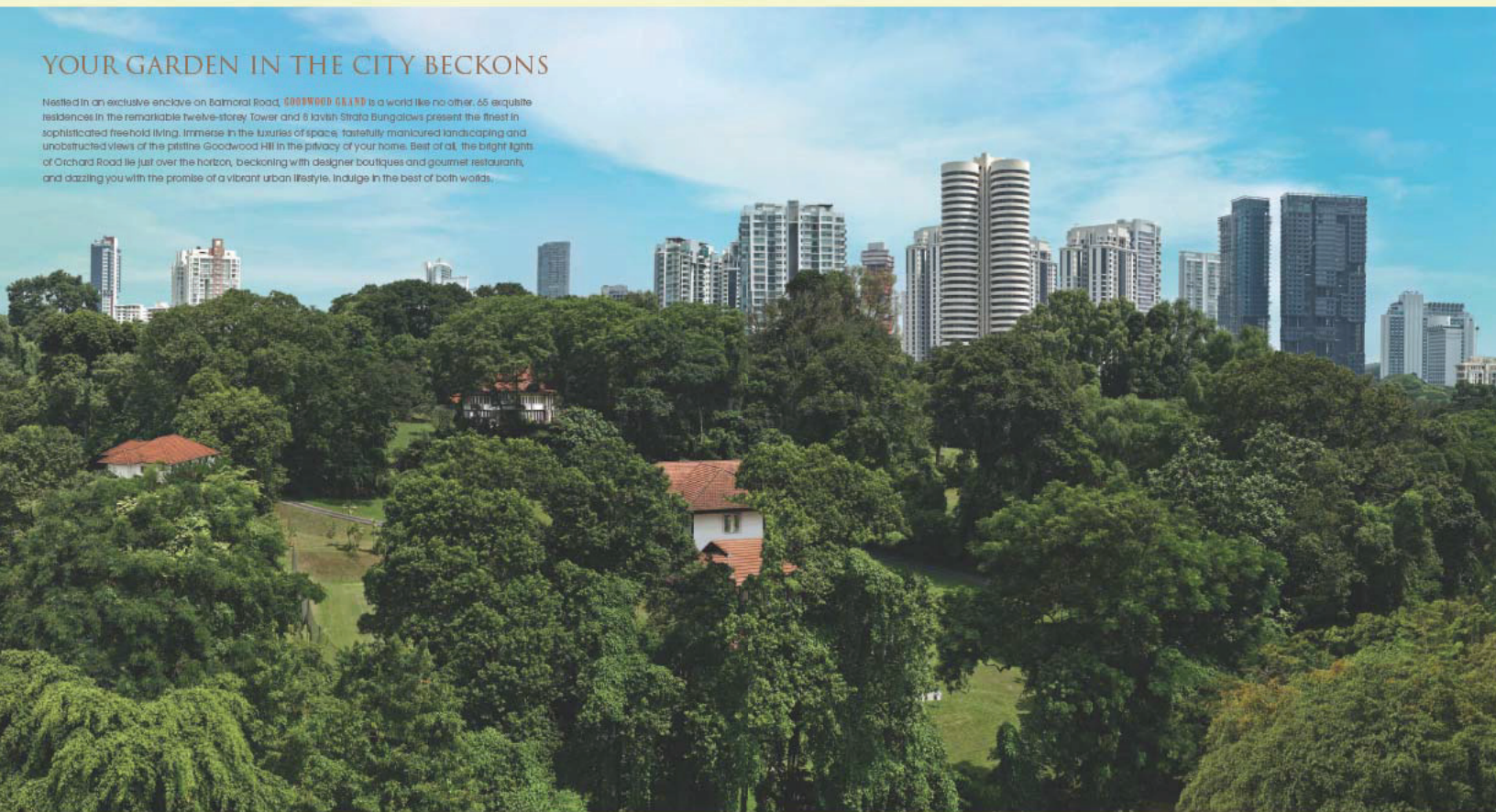
WHERE HISTORY AND TRANQUILITY RESIDE

Goodwood Hill certainly is the garden in the city. Secluded within an enchanting rainforest next to the glittering sidewalks of Orchard Road, Goodwood Hill's lush surroundings are accompanied by black and white colonial bungalows. Built as early as 1910, these historical structures are universally admired for their old world charm and sprawling gardens. Today, this residential estate continues to preserve its heritage and is regarded as the enduring enclave of tranquility for the privileged few.



YOUR GARDEN IN THE CITY BECKONS

Nestled in an exclusive enclave on Balmoral Road, **GOODWOOD GALLERY** is a world like no other. 65 exquisite residences in the remarkable twelve-storey Tower and 8 lavish Strata Bungalows present the finest in sophisticated freehold living. Immerse in the luxuries of space, fastidiously manicured landscaping and unobstructed views of the pristine Goodwood Hill in the privacy of your home. Best of all, the bright lights of Orchard Road lie just over the horizon, beckoning with designer boutiques and gourmet restaurants, and dazzling you with the promise of a vibrant urban lifestyle. Indulge in the best of both worlds.





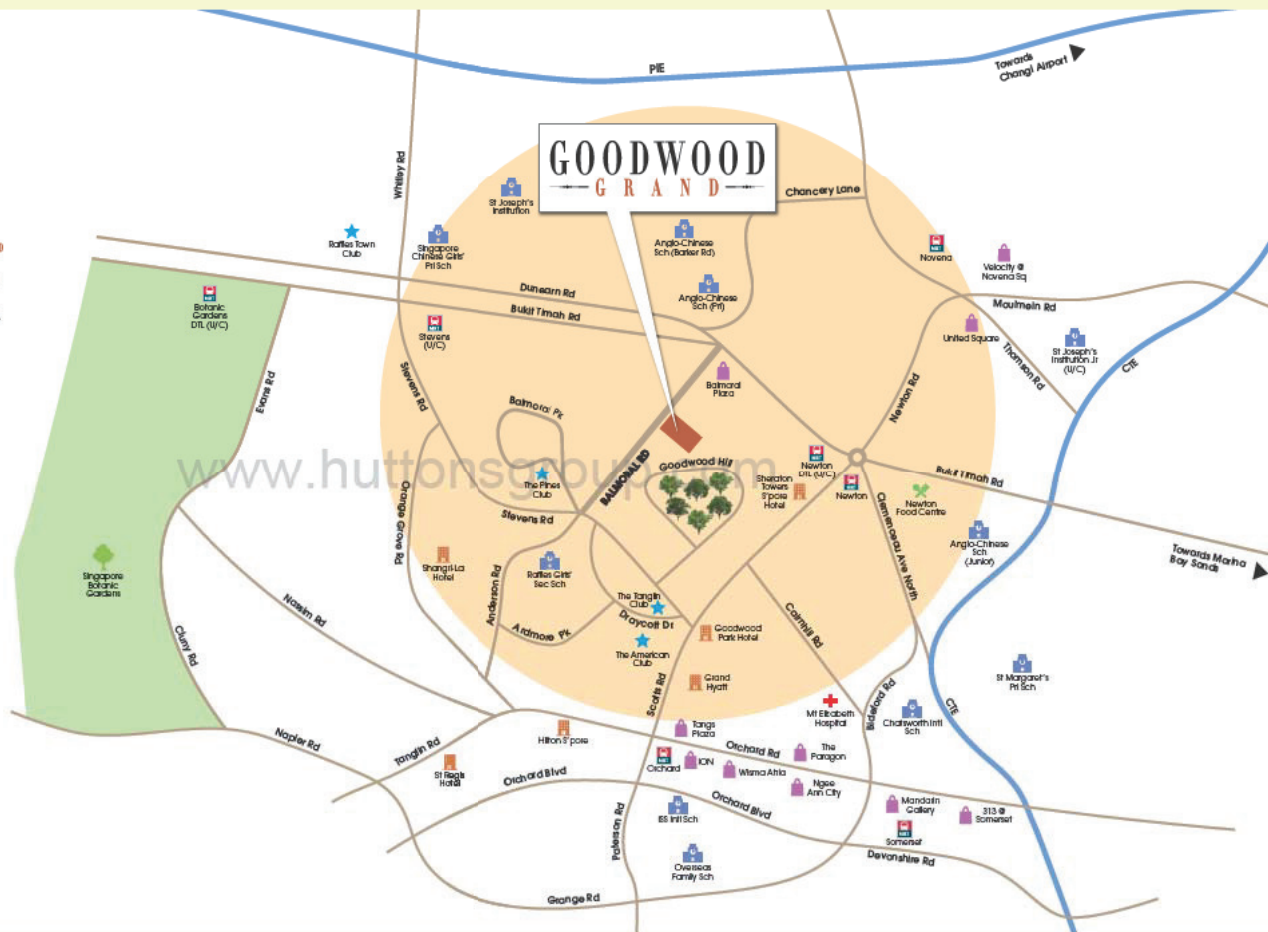
NATURALLY STUNNING

Towering over the surrounding foliage, the Tower features a seamless integration of clean lines and vertical elements, extending from ground to sky. Together with a beautiful lush sky terrace, the Tower showcases architecture inspired by nature and its green habitat. The eight strata bungalows lend an extra touch of prestige and splendour to **GOODWOOD GRASS**.

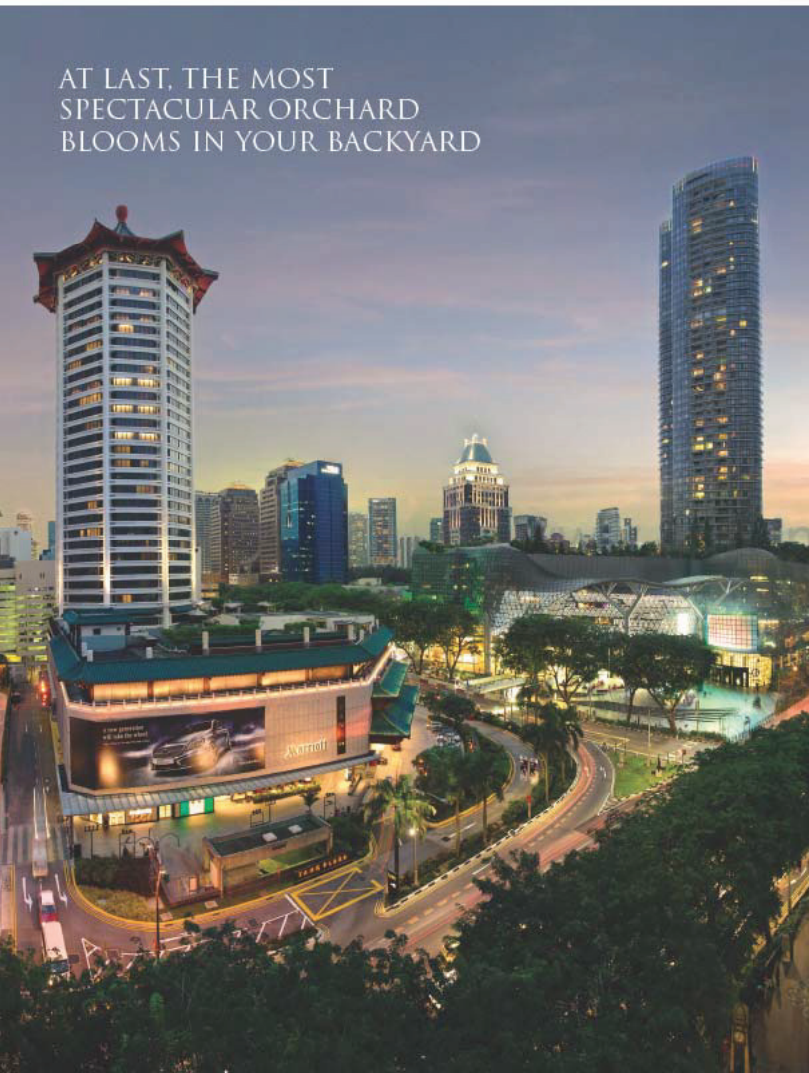
Artistic Impression

The pulsating city, Singapore's most prestigious clubs, hotels and renowned schools are a mere stone's throw away. Located in the heart of District 10, **GOODWOOD GRAND** connects you to brilliance and convenience on the grandest platter. The finest life, from the pizzazz of global fashion labels in the city, to premier events at exclusive clubs, is within reach. Newton MRT Station is also close by. Nothing is too far away. Ever.

The pulsating city, Singapore's most prestigious clubs, hotels and renowned schools are a mere stone's throw away. Located in the heart of District 10, **GOODWOOD GRAND** connects you to brilliance and convenience on the grandest platter. The finest life, from the pizzazz of global fashion labels in the city, to premier events at exclusive clubs, is within reach. Newton MRT Station is also close by. Nothing is too far away. Ever.



AT LAST, THE MOST
SPECTACULAR ORCHARD
BLOOMS IN YOUR BACKYARD



The city that never sleeps invites you to an unforgettable night on the town. Let the wonders of Orchard Road delight you with the latest fashion trends on the runways of ION Orchard, Ngee Ann City and Paragon. What's more, allow culinary brilliance throughout the famed shopping belt to satiate your taste buds. And all it takes is a quick 3-minute drive from **GOODWOOD GRAND** for you to be in the thick of the action.

A BUDDING AND BUZZING
NEIGHBOURHOOD INDEED



Anglo-Chinese School (Barker Road)



Tanglin Club



St. Regis Singapore

Enjoy a leisurely stroll at the Singapore Botanic Gardens on a Sunday afternoon? Or a private lunch with the family at the Tanglin Club, Shangri-La Hotel or The St. Regis Hotel? If it pleases your palate, you can be assured that it's close to home at **GOODWOOD GRAND**. Even your little ones have the best picks with Anglo-Chinese School, Raffles Girls' School and more prestigious educational institutions nearby.

SERENITY SURPRISES
IN YOUR GARDEN

Come home to your exquisite abode of grandeur that is **GOODWOOD GRAND**,
where tranquility, exclusivity and privacy await to surprise you.



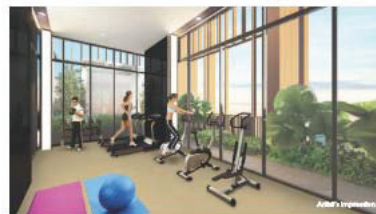
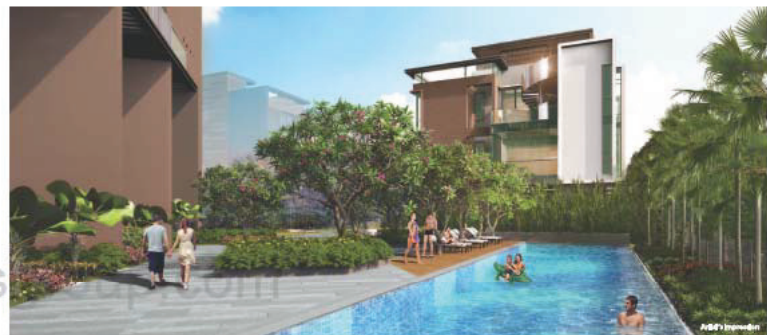
MAKING YOUR ENTRANCE A REFRESHING ONE

From the Green Trellis at the Arrival Courtyard to the Grand Walkway leading you to wonderfully manicured landscapes within the pristine estate, **GOODWOOD GRAND** presents a plethora of breathtaking facilities that's hard to ignore. Step in and discover your refreshing and relaxing new abode of elegance and tranquility.



LUXURIES TO PAMPER YOUR EVERY SENSE

Immerse in the cool Infinity Lap Pool, or simply unwind to the rhythmic splashes and charming lights at the Reflective Pond. Add rejuvenation to your already fabulous lifestyle. Rendezvous by the Verdant Garden Walk or treat yourself to rest and relaxation by the lounges at the Sun Deck. At **GOODWOOD GARDEN**, pampering is certainly a daily affair.





THE HIGHER YOU GO, THE MORE BEAUTIFUL IT IS

With spectacular views of Goodwood Hill and the city, the Sky Terrace on the 10th floor of the Tower features an idyllic setting that will surely awe and inspire. Amidst the greenery in the sky are unique facilities your whole family will love. A relaxing Stepping Lawn, tantalising BBQ Patio, fun Children's Play Zone and even an enchanting Meditation Corner provide beautiful respite from your everyday cares.

Adrian's Interiors

ENCHANTING RECIPES TO ENTICE DISCERNING PALATES

Choose from a tantalizing spread of elegantly designed Suites in the immaculate Tower
and eight magnificent multi-leveled Strata Bungalows, all guaranteed to please.





A VERDANT SANCTUARY AMIDST THE CLOUDS

Inside the Tower, indulge in luxury as your spacious home combines elegance, natural light and comforting hues to provide the perfect balance of nature and contemporary living. Take your pick from 2 and 3-bedroom residences, to grand 3 and 4-bedroom Penthouses complete with private rooftop terraces.

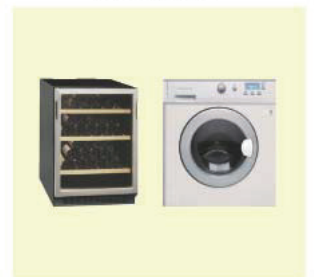
AN INTRICATE COLLECTION OF BEAUTIFUL EMBELLISHMENTS

At **GOODWOOD GRAND**, every aspect of your home is intricately designed and thoughtfully crafted to reflect your discerning taste. From the opulent imported finishes and materials, to the premium selection of kitchen appliances from Miele and De Dietrich, as well as bathroom fittings from Villeroy & Boch and Grohe, you can be assured of the perfect home for your family.

Miele



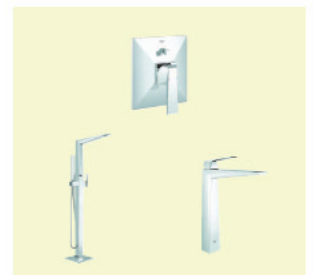
De Dietrich
SETTING NEW VALUES



Villeroy & Boch
1798



GROHE





WHEN THE TIME COMES, RETREAT TO YOUR LUXURIOUS NEST

At day's end, retreat to your very own sanctuary where respite
at its most intimate awaits to greet and pamper you.

SUMPTUOUSNESS ON A COMPLETELY DIFFERENT LEVEL

Designed to redefine luxury living, the Strata Bungalows at **GOODWOOD GRAND** present a unique combination of sophistication and functionality you will definitely appreciate.



REVEL IN AWE INSPIRING
GRANDEUR



Each Strata Bungalow is an exquisite masterpiece featuring five levels of living space including a spacious living room, double volume dining room and gourmet kitchen that link effortlessly to a private pool and outdoor terrace. Every home comes with a private lift, two basement parking lots and a roof terrace overlooking **GOODWOOD GRANDS** tranquil environment and Goodwood Hill.



COME HOME TO YOUR GARDEN IN THE CITY

With nature's beautiful greenery all around, the luxuries and elegance of space at your fingertips, as well as first-class facilities that are second to none, life couldn't possibly get any better than this.

www.hutton

